



RESEARCH

Open Access

# Characterization and quantification of the fungal microbiome in serial samples from individuals with cystic fibrosis

Sven D Willger<sup>1</sup>, Sharon L Grim<sup>2,4</sup>, Emily L Dolben<sup>1</sup>, Anna Shipunova<sup>2</sup>, Thomas H Hampton<sup>1</sup>, Hilary G Morrison<sup>2</sup>, Laura M Filkins<sup>1</sup>, George A O'Toole<sup>1</sup>, Lisa A Moulton<sup>3</sup>, Alix Ashare<sup>3</sup>, Mitchell L Sogin<sup>2</sup> and Deborah A Hogan<sup>1\*</sup>

## Abstract

**Background:** Human-associated microbial communities include fungi, but we understand little about which fungal species are present, their relative and absolute abundances, and how antimicrobial therapy impacts fungal communities. The disease cystic fibrosis (CF) often involves chronic airway colonization by bacteria and fungi, and these infections cause irreversible lung damage. Fungi are detected more frequently in CF sputum samples upon initiation of antimicrobial therapy, and several studies have implicated the detection of fungi in sputum with worse outcomes. Thus, a more complete understanding of fungi in CF is required.

**Results:** We characterized the fungi and bacteria in expectorated sputa from six CF subjects. Samples were collected upon admission for systemic antibacterial therapy and upon the completion of treatment and analyzed using a pyrosequencing-based analysis of fungal internal transcribed spacer 1 (ITS1) and bacterial 16S rDNA sequences. A mixture of *Candida* species and *Malassezia* dominated the mycobiome in all samples (74%–99% of fungal reads). There was not a striking trend correlating fungal and bacterial richness, and richness showed a decline after antibiotic therapy particularly for the bacteria. The fungal communities within a sputum sample resembled other samples from that subject despite the aggressive antibacterial therapy. Quantitative PCR analysis of fungal 18S rDNA sequences to assess fungal burden showed variation in fungal density in sputum before and after antibacterial therapy but no consistent directional trend. Analysis of *Candida* ITS1 sequences amplified from sputum or pure culture-derived genomic DNA from individual *Candida* species found little (<0.5%) or no variation in ITS1 sequences within or between strains, thereby validating this locus for the purpose of *Candida* species identification. We also report the enhancement of the publically available Visualization and Analysis of Microbial Population Structures (VAMPS) tool for the analysis of fungal communities in clinical samples.

**Conclusions:** Fungi are present in CF respiratory sputum. In CF, the use of intravenous antibiotic therapy often does not profoundly impact bacterial community structure, and we observed a similar stability in fungal species composition. Further studies are required to predict the effects of antibacterials on fungal burden in CF and fungal community stability in non-CF populations.

\* Correspondence: dhogan@dartmouth.edu

<sup>1</sup>Geisel School of Medicine at Dartmouth, Hanover, NH, USA

Full list of author information is available at the end of the article

## Background

Subjects with the genetic disease cystic fibrosis (CF) often have complex, chronic mixed bacterial-fungal lung infections that cause severe lung damage that can progress to respiratory failure. Molecular profiling studies strongly support a model in which CF lung infections contain multiple bacteria [1-3], and recent work has revealed that these communities are often surprisingly stable within subjects over time [2,4-7]. Fungal species, such as *Candida albicans* and *Aspergillus fumigatus*, are also commonly detected in sputum cultures. Culture-based studies have detected *C. albicans* in ~40%–75% CF subjects [8-21] and described its association with reduced lung function [16,22]. A large European study found that the presence of fungi by laboratory culture correlated with a 5%–10% lower lung function in CF [20]. Two prospective studies have linked the detection of either *C. albicans* or *A. fumigatus* to lower lung function and increased frequency of disease exacerbations [16,22]. Other fungi have also been detected in the CF lung [19,23-27]. Challenges associated with the culturing of fungi, due to slow growth, specific medium requirements [28], and the lack of quantitative methods due in part to filamentous morphologies [29], have made it difficult to describe fungal species and their relative burdens in the CF lung. Consequently, despite data that suggest that the mycobiome poses a health threat to individuals with CF [16,22], there is not yet a comprehensive standard of care upon the detection of fungi in sputum.

Individuals with CF-associated lung infections usually experience periods of stable lung function interspersed with episodes of disease exacerbation, which is loosely defined as a period of impaired lung function or the worsening of other health metrics that requires hospitalization for the administration of one or more intravenous antibiotics. The effects of antibiotic treatment on bacterial numbers and community structure are not fully understood and variable across subjects. One recent study found that antibiotic therapy does not cause reproducible shifts in bacterial community structure or bacterial density within sputum [30], while another study reported that antibiotic use was associated with decreased diversity and short-term shifts in community structure [4]. The effects of antibiotic therapy on fungal loads or fungal species composition in the lung are not well known. Several studies have indicated that antibiotic usage precedes the increased detection of fungi in sputum [31-36]. Furthermore, antibiotic therapy in other systems correlates with an increased incidence of fungal infections, such as bloodstream infections [37-40], oral candidosis [41], and vaginal candidiasis [42], and increased fungal loads in the gastrointestinal tract [43-45]. A full characterization of the fungal species within sputum and other host-associated microbial communities

will require the community-wide implementation of lysis methods that are effective for all bacterial and fungal species and the use of a combination of molecular methods that provide information on all of the species present. Most molecular analyses of host-associated fungi have relied upon amplification and sequencing of the internal transcribed spacer 1 (ITS1) region within the ribosomal RNA operon [46-49]. Due to a high degree of variation between even closely related species [50-52], this region can serve as a unique taxonomic identifier in both traditional capillary and next generation DNA sequencing studies [46-49].

In this report, we assessed the fungi within the CF lung in subjects hospitalized for treatment with antibacterial antibiotics and advanced the development of tools for the analysis of the fungal component of the microbiome (mycobiome) within clinical samples. Using primers that amplify the ITS1 region, we characterized the mycobiome and bacterial microbiome in expectorated sputum samples from six subjects before and after antibiotic therapy. *Candida* species dominated the mycobiomes, and their relative abundances were stable over time in contrast to less stable bacterial community structures. Using these samples, we also quantified the numbers of fungal genomes within each sample and found variability in how fungal densities in sputum changed over time and after treatment with antibacterial drugs. Lastly, towards facilitating future mycobiome studies, we assess intra-strain variability in *Candida* ITS1 sequences and describe improvement of the fungal ITS1 reference database associated with VAMPS (Visualization and Analysis of Microbial Population Structures) [53] and its use in analyses of fungal ITS1 sequences amplified from host-associated microbial communities.

## Results

### Adapting a publicly available tool for mycobiome analysis

To aid the analysis of fungal ITS1 sequences, particularly those amplified from clinical samples, we improved the ITS reference database for Global Alignment for Sequence Taxonomy (GAST) [54] analyses within VAMPS, a widely used web-based tool [53] that resolves phylogenetic affinity of marker gene sequences from diverse bacterial communities ([2,55-57] as examples). The reference database for assigning the taxonomic affinity of fungal ITS1 amplicon sequences derives from the UNITE database [58]. Our modifications included a number of corrections to the taxonomic information within records for medically relevant fungi, and the removal of some sequences that were exact matches to well-characterized plant sequences that had been incorrectly annotated as being of fungal origin. We also increased representation of the human-associated fungi *Candida* and *Malassezia* in the database by adding all Genbank database entries that contained the keywords “ITS”, “*Candida*”, and “*Malassezia*” and had

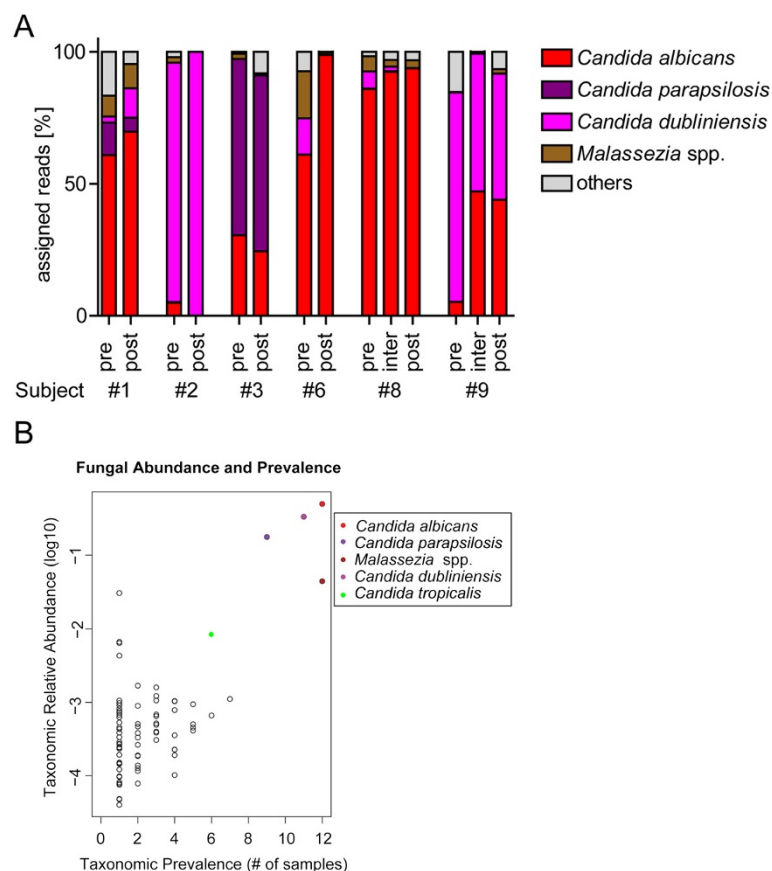
complete annotations. This step increased the number of *Candida* species from 251 to 284 and the number of unique accession IDs containing the keyword “*Candida*” from 930 to 2021. For *Malassezia*, 72 unique accession IDs containing the keyword “*Malassezia*” from Genbank with complete genus and species information were added.

### Overall assessment of the fungi identified in sputum from inpatient subjects

Using VAMPS, we analyzed the fungal community in CF sputum from six hospitalized subjects that received subject-specific antibacterial treatments (Additional file 1: Table S1). Using primers that match conserved flanking sequences, we PCR-amplified the fungal ITS1 sequences from sputum DNA samples for pyrosequencing analyses. We determined the reproducibility of the fungal ITS1 amplification and deep sequencing protocol by analyzing technical replicate libraries created from the same DNA

that had been extracted from a de-identified sputum sample collected for the purposes of the method development. The results from the two technical replicates were very similar in terms of the fraction of reads assigned to each fungus (<1% difference in percent abundance per sample) (Additional file 2: Figure S1).

Datasets from each sputum sample contained an average of 21,434 fungal reads ranging from 1,672 fungal reads (the inter-treatment sample of subject #9) and 37,684 (the post-treatment sample of subject #6) (Additional file 3: Table S3), and a rarefaction analysis indicated that the sequencing depth was sufficient to detect the vast majority of fungi present (Additional file 4: Figure S2A). *Candida* represented the dominant genus with 11 different species. The top three *Candida* species (*C. albicans*, *Candida dubliniensis*, and *Candida parapsilosis*) accounted for 74%–99.9% of all ITS1 reads in all samples (Figure 1A) making these species both the



**Figure 1** Characterization of the fungal communities of sputum samples from CF subjects. **(A)** Fraction of pyrosequencing reads assigned to each of the top four fungal taxa detected in CF subjects immediately after an exacerbation and before starting an antibacterial therapy (pre) and approximately 2 weeks afterwards (post) or while hospitalized (inter). The legend indicates the color assigned to each indicated fungal species or genus (*Malassezia* sp. unknown). **(B)** Relative abundance of all fungal genera, extended to the species level for the clinically important *Candida* species (colored dots), is plotted against the prevalence of each genus and *Candida* species in the six CF subject samples (pre- and post-treatment) and show that fungi that are highly abundant in a single patient are also highly prevalent across patients. The colored dots indicate the *Candida* species and the genus *Malassezia* that are both highly abundant and highly prevalent and the empty dots represent all remaining fungal genera identified in our study.

most abundant species and also the most prevalent. *C. albicans* ranged from 0.1% of reads (the post-treatment sample from subject #2) to 98.8% of reads (the post-treatment sample from subject #6) (Additional file 5: Table S4). In three subjects, the only reported fungi using culture-based detection methods were *C. parapsilosis* in subjects #1 and #3 and *C. dubliniensis* in subject #2 (Additional file 1: Table S1). Another clinically interesting *Candida* species, *Candida tropicalis*, was detected at lower levels, ranging from 2 to 477 reads, and only in half of the samples (Figure 1B). Aside from *C. albicans*, only *Malassezia* spp. (including *Malassezia restricta* and *Malassezia globosa*) occurred in all samples, but at levels 10- to 50-fold lower than the *Candida* spp. reads (Figure 1A,B). We detected low numbers of reads corresponding to three different species of *Aspergillus* (*Aspergillus unguis*, *Aspergillus versicolor*, and *Aspergillus* sp.) in this study, but not *A. fumigatus*, another common CF pathogen, which we have previously detected in other CF sputum samples (data not shown). Across all 14 samples, our VAMPS-based analyses detected 111 different taxa at the genus level, and these resolved to 147 species level assignments (Additional file 5: Table S4). The minor members of the mycobiome are discussed in more detail below.

To validate the results obtained by GAST analyses, we employed BLAST to assign fungal ITS1 sequences to species and genus level categories (Additional file 6: Table S5). For the BLAST searches, we batch blasted examples of all unique reads and assigned a genus or species to each set of sequences. Comparison of GAST and BLAST results initially highlighted the need for database improvement (described above), and once the database had been modified, the two methods yielded a similar number of taxa. Because GAST reports the consensus annotation for all of the sequences that match the query, the developmental state of the ITS1 database may limit the assignment of genus or species level information. In this case, sequences clustered by GAST in VAMPS can be easily retrieved for further analysis.

Because the characterization of fungi within host-associated microbial communities is at an early stage, we sought to determine if there were any ITS1 sequences that have not been previously described. In initial analyses, up to 13.3% of sequences in a sample could not be identified as fungi (BLAST scores of greater than  $e^{-15}$  for the top hit). On average, samples had 3.6% of reads in this category. Further analysis querying Genbank's Nucleotide collection (nr/nt) database revealed that most of these unassigned sequences corresponded to ITS1 sequences in the genomes of food-associated plants such as *Pisum sativum* (peas), *Allium cepa* (onions), *Allium sativum* (garlic), *Solanum tuberosum* (potato), and *Glycine max* (soybean) suggesting contamination of the

sputum sample from subjects' diets. The primers used to amplify fungal ITS1 sequences (Additional file 7: Table S2) displayed high levels of similarity to comparable regions in plants. VAMPS allows one to limit analyses to specific taxonomic levels or to specific groups (for instance, fungi or Ascomycetes) [53], and this eliminated the problem of contaminating sequences. A very small number of unassignable sequences (13 out of 300,072 reads) were also identified, but they were most often single reads that were only found within single samples and were not characterized further.

#### Comparison of intra- and inter-species ITS1 sequence differences in *Candida* spp.

Some fungal genomes may contain up to 600 copies of the ribosomal RNA genes (rDNA) and intraspecific ITS variability can exceed 24.2% [59-62]. In contrast, *C. albicans* typically has 150-200 copies of the ITS1 locus, with one report estimating less than 0.2% ITS variability within a strain [62]. Since *Candida* represented the predominant fungal genus in our CF subjects, we used Illumina MiSeq sequencing to investigate levels of ITS1 sequence variation within and among clinical *C. albicans* isolates. When the ITS1 region was amplified from genomic DNA from pure cultures of *C. albicans* wild type SC5314 and seven clinical isolates, then analyzed using Illumina MiSeq, the predominant sequence (>99% of reads) for each strain was the same (100% identical across all isolates). The second most abundant sequence accounted for only ~0.02% of reads. Similarly, we observed no evidence for intra-strain variation in the ITS1 sequences from the analysis of genomic DNAs isolated from pure cultures of three other *Candida* species (*C. dubliniensis*, *C. parapsilosis*, and *C. kruseii*) (data not shown).

When we compared the most abundant *C. albicans* ITS1 sequence in the sputum-derived datasets to the dominant sequence from the clinical isolates, we found that they were 100% identical (data not shown). Alignments of the three most common ITS1 sequences that resolved to *C. albicans* from each sample, with the ITS1 sequences from the genome information for *C. albicans* strains SC5314 and WO-1, displayed 99% identity. The second most abundant *C. albicans* ITS1 454 sequence amplified from sputum DNA differed from the most abundant ITS1 sequence by one missing "T" at position 60, which most likely reflects a 454 homopolymer sequencing error. By way of comparison, the closely related *Candida* species *C. albicans* and *C. dubliniensis* have ITS1 sequences that have 94.6% identity.

#### Description of the mycobiome and bacterial microbiome across serial sputum samples

In the collection of serial samples, each subject provided a sputum sample at the time of admission for treatment

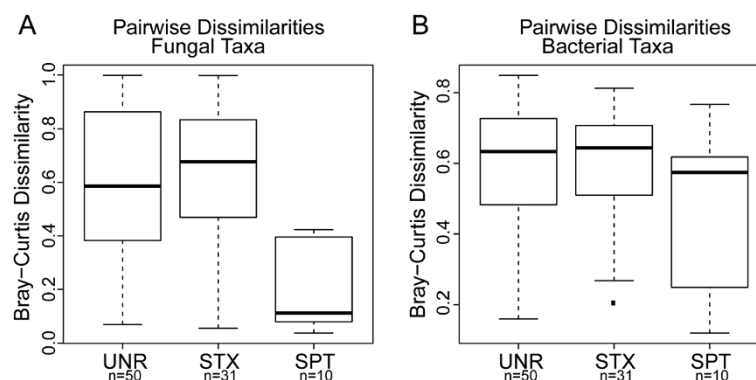
of exacerbated respiratory disease using two or three antibacterials and one sample upon the completion of treatment; some subjects also provided a third sample during treatment. The drugs administered included Tobramycin, Vancomycin, Doripenem, Meropenem, Cefazadime, and Linezolid and information which antibacterial drugs were used in each subject is provided in Additional file 1: Table S1. The fungal communities in all samples, grouped by subject, are shown in Figure 1A. The relative abundance of reads corresponding to the predominant *Candida* spp. appeared to be quite stable over time during treatment, and there was no obvious change upon treatment initiation (Figure 1A). Bray-Curtis dissimilarity and principal coordinate analysis were used to measure and represent taxonomic relatedness between classes of samples in the mycobiome and the microbiome samples. Antibiotic treatment did not establish a specific fungal community. Fungal samples from unrelated people at different points in therapy (unrelated, UNR) were no more different than samples from unrelated people at the same point in treatment (same treatment, STX). However, mycobiome samples from the same subject (same subject, SPT) were significantly more similar to each other ( $P < 0.001$ ) by a Tukey's honest significant test (Figure 2A) than mycobiome samples from the same treatment point, suggesting that subjects' fungal communities remained relatively stable. Furthermore, as shown in the PCA scores plot (Additional file 8: Figure S3), the samples from subjects #1, #6, and #8 clustered together as did those from subjects #2 and #9. Subject #3 was distinct from the other samples (Additional file 8: Figure S3).

To compare the fungal community profiles to those for the bacteria, we amplified and sequenced the V6 region of the bacterial 16S rDNA gene from the same

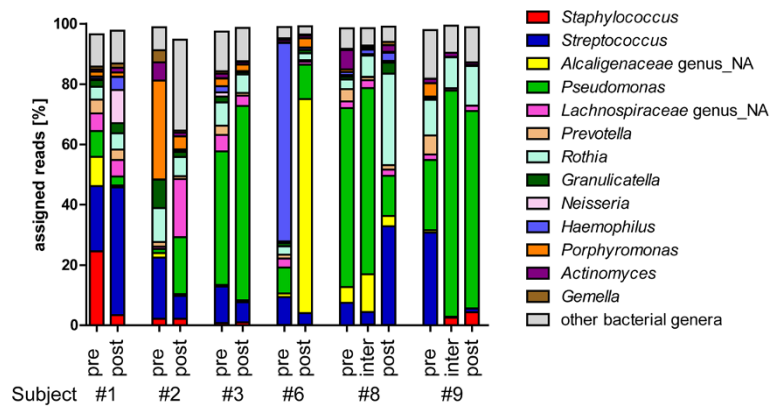
sputum DNA samples. On average, we recovered 726,787 sequences from each sample (Additional file 3: Table S3), and a rarefaction analysis indicated that this deep sequencing effort identified most members of the sampled bacterial microbiomes (Additional file 4: Figure S2B). Ninety-nine percent of all reads from all samples were assigned to 44 genera, though not all 44 genera were detected in every sample (Additional file 9: Table S6). The remaining 1% of reads corresponded to 397 different genera. As reported by other studies, most samples contained high levels of the genera *Pseudomonas*, *Staphylococcus*, *Streptococcus*, *Prevotella*, *Rothia*, *Granulicatella*, *Neisseria*, *Haemophilus*, *Porphyromonas*, *Gemella*, and members of the families *Alcaligenaceae* and *Lachnospiraceae* (Figure 3) [2,4,63,64].

Consistent with published work [4,6,65], the bacterial community also displayed stability in the major community members in many subjects (Figure 3), though some changes in the bacteria with the highest relative abundance were observed in subjects #2 and #6 (Figure 3). The Bray-Curtis dissimilarity of the bacterial communities showed a less clear picture than for the fungi, but it still was apparent that the samples from the same subject showed some degree of relatedness. Bacterial community profiles from the same subject were marginally more similar (SPT) but the difference was not significant by a Tukey's honest significant test (Figure 2B); like for the fungi, the STX samples were not more similar than the UNR samples. There was less of a clear trend in sample clustering in the PCA scores plot, and the larger number of bacterial genera in each sample may have contributed to this complexity (Additional file 8: Figure S3).

To compare bacterial and fungal richness across samples, we first accounted for differences in the number of



**Figure 2 Relatedness of microbial communities.** Box-and-whisker plots of pairwise Bray-Curtis distances of the mycobiome and microbiome of cystic fibrosis (CF) subjects. **(A)** Fungal samples from unrelated subjects on different treatments (UNR) are no more different than samples from unrelated subjects on the same treatments (STX). Mycobiome samples from the same subject (SPT) were significantly more similar to each other ( $P < 0.001$ ) by a Tukey's honest significant test than mycobiome samples from the same treatment group, suggesting that patients' fungal communities are specific to patients and remain relatively stable during treatment. **(B)** Bacterial genera from the same subject (SPT) were marginally more similar than unrelated subjects on different treatments (UNR) or unrelated subjects on the same treatments (STX) but these differences were not significant by a Tukey's honest significant test.



**Figure 3** Characterization of the bacterial communities of sputum samples from CF subjects. Fraction of reads assigned to each of the top 13 bacterial genera detected in CF subjects before treatment (pre), during treatment (inter), or after completion of treatment (post).

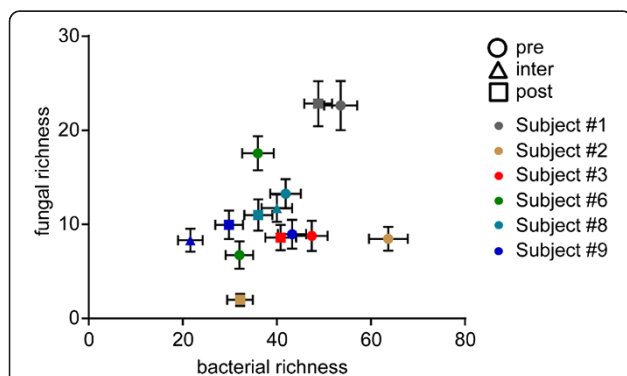
reads by subsampling 1,000 reads for each fungal and bacterial sample and repeatedly subsampling 1,000 times. First, we found that the normalized mean number of fungal genera did not correlate with the number of normalized mean bacterial genera (Figure 4). Using a Wilcoxon matched-pairs signed ranked test, it was found that the post-treatment samples had a lower mean bacterial genus richness ( $P < 0.05$ ) when compared to pre-treatment samples (Additional file 10: Figure S4). While the normalized mean richness for the fungi trended in the same direction, the differences were not statistically significant ( $P > 0.1$ ).

#### Analysis of minor members of the mycobiome

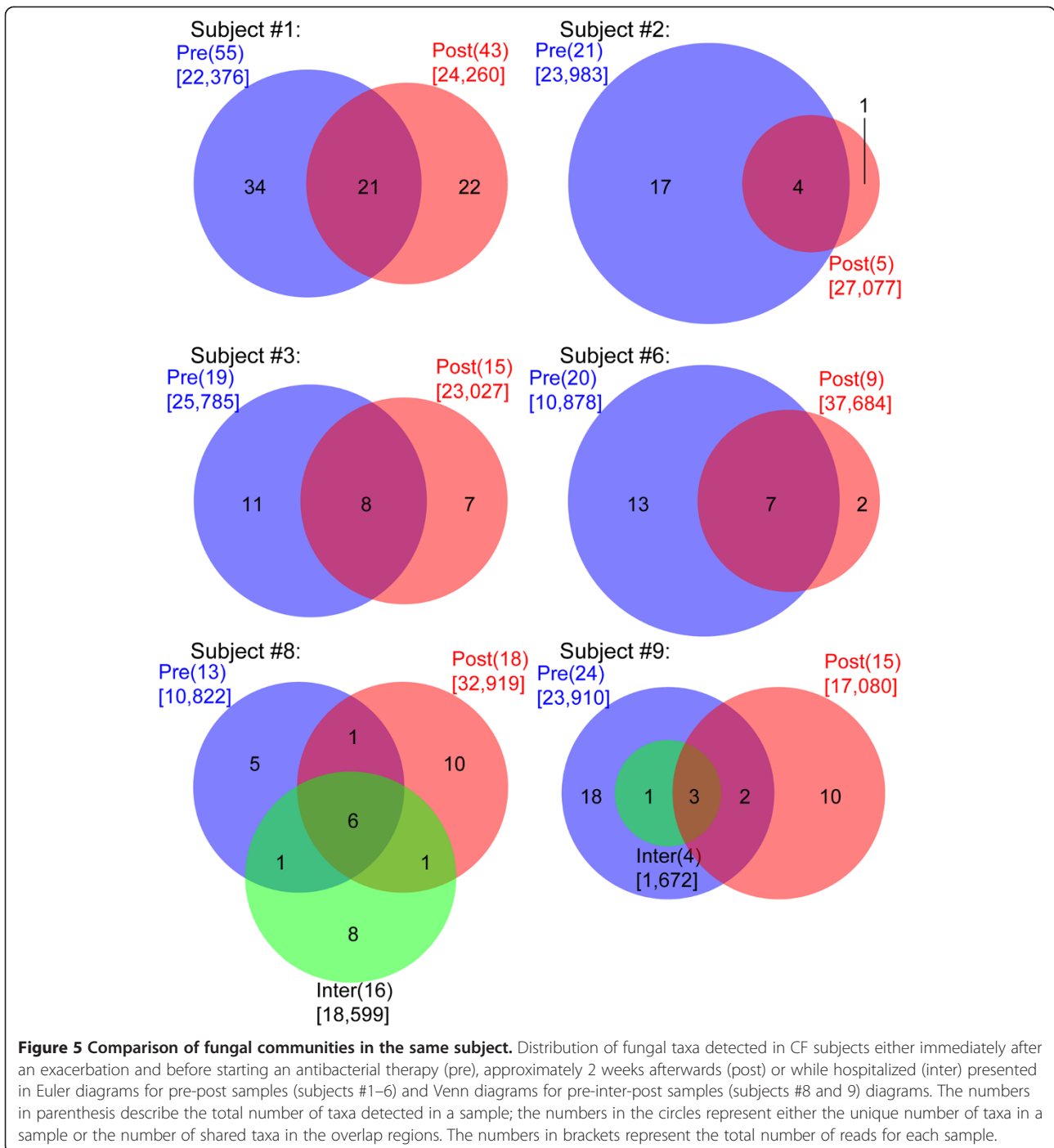
The remaining fungal genera represented relatively low abundance populations that occurred in one or more

samples (Figure 1B and Additional file 5: Table S4 for identities). When using the BLAST-based mycobiome analysis (see Additional file 11), the number of taxa identified within a sample ranged from 5 taxa (resolved to 3 species, 1 genus, and 1 cluster of unidentified sequences in the post-treatment sample from subject #2) to 60 taxa (resolved to 43 species, 16 genera, and 1 cluster of unidentified sequences in the pre-treatment sample of subject #1) (Additional file 12: Table S5). Minor members (<0.05% of annotated ITS1 sequences) of the mycobiome included other *Candida* species, *Trichosporon* (an emerging pathogen in CF subjects [27,66]), and the human pathogens *Rhodotorula*, *Fusarium*, and *Penicillium* (Additional file 5: Table S4).

The deep sequencing in this study and the corresponding rarefaction analyses suggest that we have identified the number of taxa that were common to the two (and in some cases three) samples from a given subject (Additional file 4: Figure S2). The overlap in fungal taxa in samples from the same subject is presented as Euler and Venn diagrams (Figure 5 based on data in Additional file 5: Table S4). When only the pre- and post-treatment samples were compared, an average of  $44\% \pm 19\%$  of the fungal species detected was common in both samples. This highlights the fact that some of the minor fungal taxa were not common across the serial samples and may represent transient species in the airway or oral community. As an example, 21 taxa were detected in both the pre-treatment and post-treatment samples from subject #1; 34 taxa were unique to the pre-treatment sample and 22 taxa were only in the post-treatment sample (Figure 5). As sequencing depth can impact the number taxa per sample and thus the apparent stability of a taxon, we also considered and presented the number of reads obtained for each sample; there were no differences in sequencing depth between the pre- and post-treatment samples from a given subject (Figure 5). The stability of species across



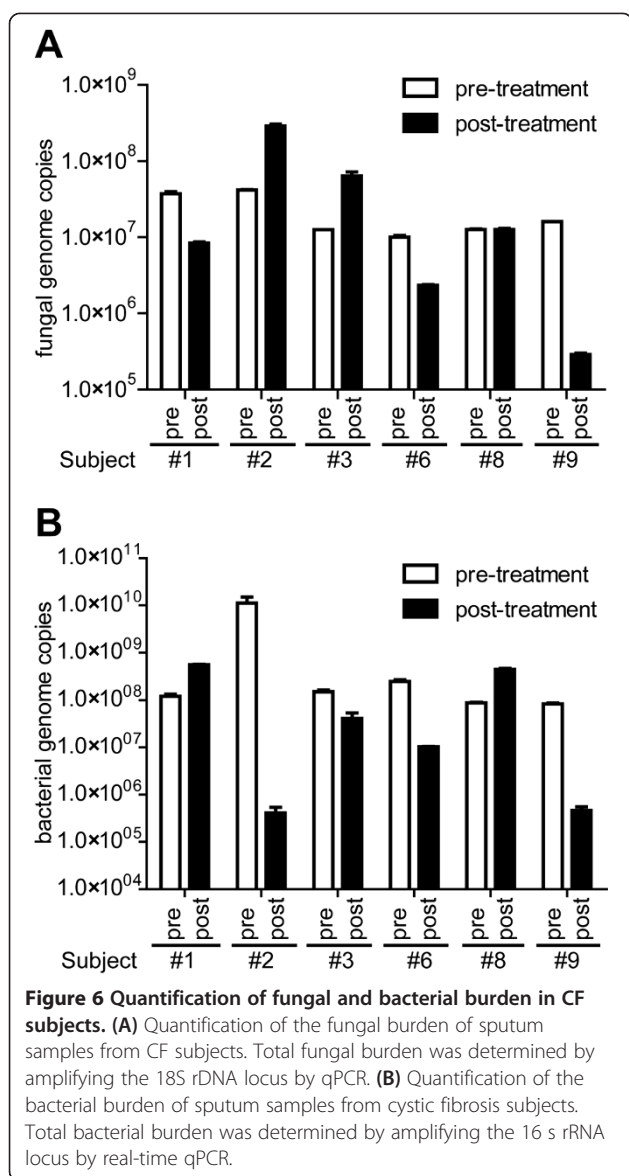
**Figure 4** Comparison of fungal and bacterial richness within samples. Scatter plot of the subsampled mean normalized number of bacterial genera vs. the number of fungal genera found in the sputum of CF subjects. Neither treatment nor high numbers of bacterial or fungal genera have an obvious impact on each other. The pre-treatment samples are depicted as circles, the intermediate (inter) samples collected during treatment shown as triangles, and the post-treatment samples are depicted squares. The colors represent the different subjects.



samples from the same subject was also assessed for bacteria (Additional file 12: Figure S5). Again, comparing the pre- and post-treatment samples, we found that an average of 77% ±7% genera were in common in the two samples (Additional file 12: Figure S5 based on data in Additional file 9: Table S6). Additional file 13: Table S7 highlights those fungal taxa, including low abundance taxa that were detected in more than one sample.

#### Analysis of the changes in community structure and absolute abundance before and after antibacterial therapy

To complement the data on the relative abundances pre- and post-treatment, we also analyzed the density of bacteria and fungi within each sputum sample by qPCR. Results were normalized to sputum dry weight (genome copies per mg dry weight) (Figure 6A). On average, we could detect  $\sim 4.2 \times 10^7$  fungal genome copies/mg dry



weight sputum with a maximum of  $2.8 \times 10^8$  copies in the post-treatment sample of subject #2 and minimum of  $2.9 \times 10^5$  copies in the post-treatment of subject #9 (Figure 6A). Overall, we did not observe a specific trend in fungal burden corresponding to the antibacterial therapy. In three subjects, the fungal burden dropped (subjects #1, #6, and #9); in two subjects, the fungal density increased (subjects #2 and #3); and subject #8 exhibited no difference. We designed primers to quantify levels of the four *Candida* species (Additional file 7: Table S2), and the primers were shown to be species specific with respect to one another in studies performed using genomic DNA from purified cultures (data not shown). When the absolute abundances of fungi, determined using 18S rDNA quantification was compared to the sum of the levels found using the *Candida* species

specific primer sets, they were within the same order of magnitude (Additional file 14: Figure S6) confirming that the *Candida* species were numerically dominant among the fungi within these samples. The qPCR approach also confirmed that relative abundance of *C. tropicalis* levels was much lower than *C. albicans* (data not shown). This finding may parallel observations that *C. tropicalis* is often less abundant than the other *Candida* species in oral samples [67-70].

We determined total bacterial burden without pre-amplification by targeting the 16S rRNA locus [2] (Figure 6B). On average, we detected  $\sim 9.2 \times 10^8$  bacterial genome copies/mg dry weight sputum with a maximum of  $1.1 \times 10^{10}$  copies in the pre-treatment sample of subject #2 and minimum of  $4.0 \times 10^5$  copies in the post-treatment of subject #2. As with the fungal quantification, we did not observe a specific trend in bacterial density in the pre- and post-treatment samples. The bacterial sputum density dropped in four of the patients, most significantly in subject #2 in which the bacterial burden within sputum dropped  $\sim 27,500$ -fold to a level close to the detection limit. In two subjects, the bacterial level went up approximately five-fold. There was no correlation between the changes in bacterial density and changes in fungal density (Figure 6).

## Discussion

Dominant members of fungal communities, which we defined as those that account for more than 80% of all assigned reads per sample (*Candida* and *Malassezia* species) (Figure 1A) persisted throughout treatment without significant change in relative abundance suggesting that there is stability within the mycobiome. Many minor members of the fungal community appeared to be ephemeral or sporadic, and thus did not show changes in prevalence or abundance that could be attributed to antibacterial treatment (Figure 5 and Additional file 13: Table S7). Based on the depth of sequencing and the rarefaction analyses, the apparent instability of minor members is unlikely an artifact of sequencing depth, but rather likely a reflection of their transient nature. The fungal species we detected within CF sputum mirrors results in other recently published work. For example, denaturing high-performance liquid chromatography analysis of the ITS1 region amplified from fungi within CF sputum also found *C. albicans*, *M. restricta* and *M. globosa* [71]. In a study of four stable CF subjects by Delhaes et al. [19], these fungi were also well represented. While *C. albicans* is commonly observed in CF sputum, the presence of *Malassezia* is less well understood in part because *Malassezia* cannot be cultured without the use of specialized medium. Investigation of the fungal communities on the human skin found *M. restricta* and *M. globosa* to



be very common [72], and future work will be required to determine if *Malassezia* are living in the lung or if the signal is coming from dead cells or DNA. Mournier et al. [71] also detected more fungi using molecular methods when compared to culture-based analyses, and *Candida* and *Malassezia* were among them. In addition, they found that *A. fumigatus* was detected by culture in some samples but not by molecular techniques [71]. While *A. fumigatus* was not seen in clinical microbiological analyses of the sputa in this study, we were surprised by its complete absence from our datasets. We have detected *A. fumigatus* in other samples indicating that our methods can amplify its ITS1 region. A recent shotgun metagenomic analysis of CF sputum DNA also found significant levels of *C. albicans* and *A. fumigatus* by culture but found no DNA evidence for *A. fumigatus* and a small number of other *Candida* sequences [73]. In contrast to what was observed in CF sputum, Charlson et al. [74] analyzed the fungi in the lavages of healthy individuals, and they found that healthy volunteers' bronchoalveolar lavage (BAL) yielded scant fungal amplification. Although *Candida* was identified in several healthy subjects' oropharyngeal washes, it was absent in their BAL.

In this study, we explored whether inpatient treatment, which included multiple antibacterials, impacted the fungal community in a consistent way, perhaps indicating changes in biological niches or environmental conditions upon perturbation of the bacterial community. Our data suggest that the use of multiple antibiotics did not necessarily have strong effects on either the bacterial or fungal communities. While the number of bacterial genera (richness) declined slightly but significantly (Additional file 10: Figure S4), there was not a consistently change to the structure of the community with similar relative abundances of dominant species in four out of six subjects (Figure 2 and Additional file 12: Figure S5). In these same samples, we did not observe a consistent increase in the number of fungal genera (Additional file 10: Figure S4) and the fungal species that dominated the samples did not change markedly (Figure 1A). This lack of difference between pre- and post-samples may well be due to the fact that these subjects have been exposed to years of inhaled and intravenous antibacterial therapy, and the bacteria in their lungs have adapted or evolved in this context. Thus, future studies in subjects without routine exposure to antibiotics are needed in order to assess the effects of antibacterials on the resident fungi. We and others have characterized the interactions between *Pseudomonas aeruginosa* and *C. albicans*, including effects on fungal morphology [75,76], viability [77,78], metabolism [76,79], and virulence factor regulation [80,81], and the high relative abundance of *P. aeruginosa* in the bacterial communities and *C. albicans* in the fungal communities supports

the hypothesis that these species have the potential to impact one another in the lung.

The therapy used in the treatment of disease exacerbation also had no consistent impact on fungal density in patient sputum samples. Measurements of fungal and bacterial genomes per milligram of sputum showed an inconsistent trend across serial samples collected before and after antibacterial treatment (Figure 6) suggesting the need for either a larger number of subjects or alternative methods for the measurement of live microbes including bacteria and fungi. Previous reports in other body sites have linked antibiotics to increased fungal burden [82-88]. In a recent study, Dolville et al. [89] investigated the gut microbiome of mice over 76 days of treatment with the antibiotics vancomycin, ampicillin, neomycin, and metronidazole and subsequent recovery. They observed that bacterial numbers dropped in abundance more than 3-fold while fungi increased ~40-fold in abundance upon treatment but found that both numbers went back to pre-treatment levels upon recovery. Interestingly, the bacterial microbiome was detectably different from *Candida*-free controls and *Candida* became more abundant than at the time point prior to treatment [89]. While we observed that fungal density in sputum had the potential to vary (either increase or decrease), we found no common trend. It is important to note that all of these patients have a significant history of prior antibiotic exposure and thus some adaptation may have occurred. The effects of antibiotic therapy in fungal populations may differ from those obtained upon first exposure to a drug.

Fungal load has been associated with lung disease severity [16,20,22] suggesting that it is important to measure fungal density in sputum in addition to the mere presence of specific species. We found a range of fungal loads across samples (Figure 6), and this range is consistent with previous reports. For example, Bauernfeind et al. [15] found between  $10^4$  and  $10^7$  colony forming units per gram of sputum of *Candida* using culture methods. Charlson et al. [74] highlight the importance of measuring bacterial and fungal loads and to compare it to background contamination by upper respiratory tract flora to identify lung-enriched taxa. Here, we applied qPCR quantification of the 16S rDNA locus for total bacteria, the 18S rDNA locus for total fungi, and species-specific primers to quantify three *Candida* species. One limitation of DNA-based quantification protocols is the inability to differentiate between nucleic acids from live and dead species. Methods to inactivate DNA from dead or lysed cells would enhance our understanding of the active microbiota in the lung [90].

Finally, we report the use of VAMPS for analysis of the ITS1 sequencing results. VAMPS, which has provided a user-friendly tool for the analysis of bacterial

communities [2,91], now has an improved database that will expand the ability to analyze fungal ITS1 sequences from clinical samples. The VAMPS database, derived from the UNITE database [58], contains most of the available ITS1 sequences. However, further curation will improve taxonomic information in existing entries, and the inclusion of additional high-quality, taxonomically resolved sequences that further aid in the analysis and taxon assignment in future human mycobiome studies [53].

## Conclusions

The data presented in this report found stable fungal communities in the sputum of six individuals with CF. Though to a lesser extent, stability was also mirrored in the bacterial communities. We hypothesize that the resident bacteria have developed a tolerance or resistance to antimicrobials due to repeated prior exposure, and thus, little perturbation of co-colonizing fungi is observed. In addition to numerically dominant fungal populations that are predominantly members of the genus *Candida*, there are less abundant fungi, many of which were less stable across serial samples from the same subject. To enhance future analyses of the mycobiome, we developed and modified a fungal ITS1 database for use in VAMPS, a publically available tool for the analyses of visualization of data on microbial communities. Future studies will continue to investigate the effects of antibacterial drugs on fungal and bacterial organisms and their densities in sputum.

## Methods

### Study participants and ethics statement

This study was performed in accordance with the guidelines set by the Committee for the Protection of Human Subjects (CPHS) and approved by the Institutional Review Board (IRB) at Dartmouth College. Sputum samples were obtained from six subjects over the age of 18 with a confirmed diagnosis of CF and who had previous cultures positive for *P. aeruginosa* after written, informed consent. Information about the study participants is provided in Additional file 1: Table S1.

### Sample collection

Serial sputum samples were collected from six CF subjects at the time of hospitalization for treatment of a respiratory disease exacerbation and after a complete course of intravenous antibacterial therapy, which often included the use of multiple antibiotics (Additional file 1: Table S1). For some subjects, an intermediate sample during therapy was also collected. Study participants expectorated sputum into a sterile specimen cup, and the sputum sample was stored at  $-80^{\circ}\text{C}$ . In preparation for DNA extraction, the sample was thawed and homogenized by passing the sputum multiple times through needles of

increasing gauges. Sputum (500  $\mu\text{l}$ ) was dispensed into a 2-ml screw cap tube and frozen at  $-80^{\circ}\text{C}$  for at least 1 h prior to lyophilization for at least 12 h. The dry weight of the sputum was determined before DNA extraction.

### DNA extraction

Cells within the dried sputum sample were disrupted using a mixture sterile glass beads (equivalent amounts of 0.1-, 0.5-, and 1-mm diameter beads) in a bead beater (Biospec, Bartlesville, OK, USA); the tubes were agitated four times for 30 s each time with a cooling step in between pulses. The ground samples were resuspended in 300  $\mu\text{l}$  of TE + DTT (TE amended with DTT at a final concentration of 0.08% added from a 2% stock solution) containing lysozyme (3 mg/ml) and lyticase (10 U/ml) and incubated for 30 min at  $37^{\circ}\text{C}$ . Cell lysis buffer (500  $\mu\text{l}$ ) (Qiagen Puregene Core Kit B, QIAGEN Inc., Valencia, CA, USA) was added, and the mixture was incubated for 15 min at  $80^{\circ}\text{C}$ . To remove RNA, RNase (1.5  $\mu\text{l}$ ) (QIAGEN Inc.) was added and the samples were incubated for 30 min at  $37^{\circ}\text{C}$ . Lysates were chilled on ice for 1 min, 200  $\mu\text{l}$  of Protein Precipitation Solution (Qiagen Puregene Core Kit B, QIAGEN Inc.) was added, and the solutions were mixed vigorously for 20 s. Cell debris was sedimented by centrifugation at 13,000 rpm for 3 min, and the supernatant was transferred to a new 1.5-ml tube prior to addition of 600  $\mu\text{l}$  of 100% isopropanol. After mixing by inversion, the DNA was precipitated by centrifugation at 13,000 rpm for 20 min. The DNA pellet was washed with 300  $\mu\text{l}$  of 70% ethanol and air dried before resuspension in 100–200  $\mu\text{l}$  of DNA hydration solution (Qiagen Puregene Core Kit B, QIAGEN Inc.). The DNA concentrations were measured using a Nanodrop.

### Fungal ITS1 amplification and sequencing

The ITS1 region was amplified from sputum template DNA using the primers ITS1F and ITS1R (Additional file 7: Table S2) in two rounds of PCR. The reaction components were 1 $\times$  Qiagen PCR buffer, 0.75 mM  $\text{MgCl}_2$ , 7% ( $v/v$ ) dimethyl sulfoxide (DMSO), 0.2 mM deoxynucleotide triphosphates (dNTPs), 0.4  $\mu\text{M}$  primers, 1.25 units Taq polymerase (QIAGEN Inc.), 100 ng of template DNA, and water in a 25- $\mu\text{l}$  reaction volume. Cycling conditions were  $95^{\circ}\text{C}$  5 min;  $95^{\circ}\text{C}$  30 s,  $50^{\circ}\text{C}$  30 s,  $72^{\circ}\text{C}$  45 s for 10 cycles; and  $72^{\circ}\text{C}$  2 min. PCR products were purified using the MinElute PCR Purification Kit (QIAGEN Inc.) and resuspended in 10  $\mu\text{l}$  of EB buffer. The entire 10  $\mu\text{l}$  volume was used as template for a second round of PCR using primers containing adapter and barcode sequences for Roche GS-FLX amplicon pyrosequencing (Additional file 2: Table S2). Reaction components and cycling conditions were as described above, but with 30 cycles. Amplified DNA was purified

with 0.7 volumes of Agencourt AMPure XP beads (Beckman Coulter, Brea, CA, USA) and quantified on a Bioanalyzer 2100 (Agilent, Palo Alto, CA, USA). Purified amplicon libraries were sequenced using the Titanium amplicon protocol on a GS-FLX (Roche Applied Science, Indianapolis, IN, USA) following the methods outlined in [2]. Sequence data were quality filtered as described in [54,92]. We identified and removed chimeric reads by querying against the curated reference ITS1 database, as well as using the sequences as seeds in UCHIME *de novo* [93]. The raw sequencing results of the ITS1 analysis are deposited in the Sequence Read Archive (NCBI BioProject PRJNA246028; National Center for Biotechnology Information (NCBI), US National Library of Medicine, Bethesda, MD, USA) and are summarized in Additional file 5: Table S4.

For the MiSeq analysis of the ITS1 region amplified from clinical isolates of *Candida* spp., template DNA was isolated using the Epicentre Masterpure Yeast DNA Purification Kit. Primers are listed in Additional file 7: Table S2. The amplification and sequencing methods used are comparable to those reported [94].

#### **Bacterial 16S v6 amplification and sequencing**

The bacterial communities from the pre- and post-antibacterial treated CF subjects were characterized by Illumina HiSeq 16S rRNA V6 amplicon sequencing (Illumina Inc., San Diego, CA, USA) as previously described by Eren et al. [95]. Briefly, we amplified the bacterial V6 region from each sample in triplicate 33  $\mu$ L reactions, pooled the triplicates, and verified successful amplification on a Caliper LabChip GX (Perkin Elmer, Waltham, MA, USA). We cleaned amplicon products with a QIAQuick clean up assay (QIAGEN Inc.), and used fusion V6 primers to barcode each sample in a multiplexing strategy. Final barcoded products were quantitated with a Picogreen assay (Invitrogen/Life Technologies, Grand Island, NY, USA) and pooled in equimolar concentrations with respect to the target size. All PCR reactions contained 1 $\times$  HiFi Buffer, 2 mM MgSO<sub>4</sub>, 0.02 U/ $\mu$ L Platinum Taq polymerase (Invitrogen), 0.2 mM each dNTPs (ThermoFisher Scientific, Milwaukee, WI, USA), and up to 5 ng template. The final pool was size selected (Pippin Prep, SageScience, Beverly, MA, USA), quantitated (Kapa Biosystems, Woburn, MA, USA) and sequenced on a HiSeq 1000 in a 2 $\times$ 100 nt sequencing run. Quality filtering and chimera checks were performed as described above. The raw sequencing results of the bacterial 16S v6 analysis are deposited in the Sequence Read Archive (NCBI BioProject PRJNA256169; National Center for Biotechnology Information (NCBI), US National Library of Medicine, Bethesda, MD, USA) and are summarized in Additional file 9: Table S6.

#### **Microbiome and mycobiome clustering and taxonomic assignment**

The website <http://vamps.mbl.edu> provides access to individual reads, taxon assignments, and descriptions of individual clusters. To create the databases that are accessed through VAMPS researchers at the Marine Biology Laboratories at Woods Hole merged paired-end 100 bp reads into single consensus reads that completely covered the V6 region, and they assigned taxonomy with GAST [54] against a curated SILVA database [96]. To compare operational taxonomic unit (OTU) clustering performance, they employed the default UCLUST method [97] at a 97% similarity threshold with minimum cluster size of 2 using quantitative insights into microbial ecology (QIIME) (v1.5) [98].

#### **Rarefaction analysis**

To verify adequate sequencing depth of the mycobiome and the microbiome, we performed rarefaction analysis of the two datasets. For both rarefaction analyses, we used raw counts of all subject samples generated by VAMPS with the taxonomy depth selector set to “species” to create a read matrix. This table was rarefied using an R-based protocol described on the webpage “Individual Based Rarefaction using R-package” (<http://www.jennajacobs.org/R/rarefaction.html>) [99]. The resulting table was transferred into GraphPad Prism 6 to plot the rarefaction curves.

#### **Euler and Venn diagrams**

To visualize the impact of antibacterial treatment on the prevalence of fungal and bacterial taxa detected in CF subjects either immediately after an exacerbation and before starting an antibacterial therapy (pre), approximately 2 weeks afterwards (post) or while hospitalized (inter), we used the Additional file 5: Tables S4 and Additional file 9: Table S6 to generate the diagrams. First, we copied the data for pre, post and if applicable inter samples into the list-fields of an online Venn diagram generator (<http://www.bioinformatics.lu/venn.php>). Using the R package “RVennDiagram” (<http://cran.r-project.org/web/packages/VennDiagram/index.html>), we generated Euler (“draw.pairwise.venn”) and Venn (“draw.triple.venn”) diagrams following the instructions in the manual (<http://cran.r-project.org/web/packages/VennDiagram/VennDiagram.pdf>).

#### **Quantification of fungi, *Candida* species, and bacteria**

In order to quantify minor members of the mycobiome, we performed analyses using either sputum DNA or pre-amplified DNA derived from ten rounds of PCR starting with 100 ng of sputum DNA using primers specific to a conserved region of the 18S rDNA (FungiQuant primers) [100] or *Candida* species-specific primers (Additional file 7: Table S2). We confirmed that the pre-amplification step

was linear with respect to the initial sample; we performed multiple control experiments using genomic DNA isolated from different fungal species at concentrations ranging from 30 pg/ $\mu$ l to 300 ng/ $\mu$ l. The preamplification allowed for the analysis of minor members of the mycobiota. The reaction components of the first PCR were 1 $\times$  Qiagen PCR buffer, 0.75 mM MgCl<sub>2</sub>, 7% (v/v) DMSO, 0.2 mM dNTPs, 0.4  $\mu$ M primers, 1.25 units Taq polymerase (QIAGEN Inc.), 100 ng sputum DNA, and water in a 25  $\mu$ l reaction volume. Cycling conditions were 95°C 5 min; 95°C 30 s, 50°C 30 s, 72°C 45 sec for 10 cycles; and 72°C 2 min. These PCR products were purified using the MinElute PCR Purification Kit (QIAGEN Inc.), and re-suspended in 10  $\mu$ l of EB buffer. Quantitative PCR (qPCR) was conducted in 20  $\mu$ l reaction volumes with the iQ SYBR Green Supermix (Bio-Rad Laboratories, Hercules, CA, USA). Reactions contained 2  $\mu$ l of the amplicon suspension from the first round PCR and 0.2  $\mu$ M of the appropriate primers. To quantify total fungal burden, we used the primers FungiQuant\_RT\_F and FungiQuant\_RT\_R [99]. The aforementioned species-specific qPCR primers were designed to assess *Candida* burdens based on gene sequences available from the *Candida* Genome Database (<http://www.candidagenome.org/>). Genes used for primer design were CAWG\_05066 (*C. albicans*), CPAR2\_301290 (*C. parapsilosis*), Cd36\_16280 (*C. dubliniensis*) and CTRG\_03824 (*C. tropicalis*) and were selected based on conservation within species and a lack of cross reactivity with bacterial, fungal, and human sequences. qPCR was performed utilizing a CFX96 real-time PCR detection system combined with a C1000 thermal cycler (Bio-Rad Laboratories). All PCRs were done in duplicate, and data were analyzed with the CFX96 System gene expression software. Melt curve analysis was performed after the PCR was complete to confirm the absence of nonspecific amplification products. Standard curves containing a known numbers of genome equivalents were used to calculate genome numbers per mg dry weight.

For total bacterial quantification, 100 ng of sputum DNA was used as the PCR reaction template. To generate a standard curve for quantification purposes we prepared 10-fold dilutions of *P. aeruginosa* genomic DNA isolated from 10<sup>2</sup> to 10<sup>6</sup> cells. The 16S rDNA genes were amplified by qPCR, using the universal bacterial primers “total bacteria\_F” and “total bacteria\_R” at a final concentration of 0.2  $\mu$ M [101,102] (Additional file 7: Table S2). qPCR was conducted in 20  $\mu$ l reaction volumes with the iQ SYBR Green Supermix (Bio-Rad Laboratories). qPCRs for each sputum sample were performed and analyzed on the CFX96 PCR system as described above.

#### Statistical analysis

Bray-Curtis dissimilarity was measured using the ecodist [103] and vegan [104] packages in R statistical software.

Significant differences between groups were established using analysis of variance with Tukey's honest significant difference post-test. Tests producing a *P* value less than 0.05 were deemed significant. The program Prism 6 (GraphPad, San Diego, CA, USA) was used for remaining statistical tests.

#### Additional files

**Additional file 1: Table S1.** Microbiological results from samples collected at the time of admission for treatment of exacerbation and antibacterial drugs administered.

**Additional file 2: Figure S1.** Analysis of amplification and sequencing method reproducibility. DNA from a sputum sample was divided, amplified, sequenced, and analyzed in parallel to evaluate our methods.

**Additional file 3: Table S3.** Total number of reads used in the mycobiome (fungi) and the bacterial microbiome analyses.

**Additional file 4: Figure S2.** Rarefaction analysis of the mycobiome and microbiome. Rarefaction curves to determine the completeness of deep sequencing of the mycobiome (A) and the microbiome (B). Repeated samples of species subsets were used to evaluate whether further sampling would likely yield additional species, as indicated by whether the curve has not yet reached a plateau. The y-axis indicates the number of species detected and the x-axis the number of sequences analyzed per sample.

**Additional file 5: Table S4.** Fungal sequences detected in CF sputum samples using assignments made through VAMPS. The data are presented as the percent of total reads and absolute read number.

**Additional file 6: Table S5.** Fungal species within CF sputum samples using the local BLAST analysis method. The data are normalized to percent of total reads.

**Additional file 7: Table S2.** Primer list.

**Additional file 8: Figure S3.** Principal component analysis based on Bray-Curtis dissimilarity. Bray-Curtis dissimilarity and principal coordinate analysis were used to measure and represent taxonomic relatedness between classes of samples in the mycobiome (fungal taxa) and the microbiome (bacterial taxa) samples. Pre-treatment samples are colored in red and are labeled A, intermediate samples collected during treatment are colored blue and are labeled B, and post-treatment samples are colored green and are labeled C. The numbers indicate the subject number.

**Additional file 9: Table S6.** Bacterial genera identified in CF sputum samples using VAMPS. The data are presented as the percent of total reads and absolute read number. Only the genera that account for 99% of all reads are presented.

**Additional file 10: Figure S4.** Comparison of the normalized richness of the mycobiome and microbiome. Comparison of the normalized mean fungal and bacterial richness of pre-treatment and post-treatment samples. The normalized mean fungal richness shows no significant difference between treatments (*P* > 0.1) but the normalized mean bacterial richness decreases upon antibacterial treatment (*P* < 0.05) (Wilcoxon matched-pairs signed rank test).

**Additional file 11: Mycobiome data analysis.**

**Additional file 12: Figure S5.** Bacterial communities within a subject before, during, and after treatment. Distribution of bacterial taxa detected in CF subjects either immediately after an exacerbation and before starting an antibacterial therapy (pre), approximately 2 weeks afterwards (post) or while hospitalized (inter) presented in Euler diagrams for the pre- and post-samples (subjects #1–6) and Venn diagrams for series with three samples (subjects #8 and 9). The numbers in parenthesis describe the total number of taxa detected in a sample; the numbers in the circles represent either the unique number of taxa in a sample or the number of shared taxa in the overlap regions.

**Additional file 13: Table S7.** Summary of fungal taxa found in more than one sample.

**Additional file 14: Figure S6.** Quantification of total fungi and specific *Candida* species in sputum of CF subjects. Quantification of the fungal burden of sputum samples from CF subjects. Fungal burden was determined by amplifying the 18S rDNA locus by qPCR. For *Candida* species-specific quantification, we used the genes CAWG\_05066 (*C. albicans*), CPAR2\_301290 (*C. parapsilosis*), and Cd36\_16280 (*C. dubliniensis*). Fungal genome copy number was determined by comparison to a standard curve generated using DNA isolated from pure cultures of *Candida albicans* as described in the methods.

#### Abbreviations

CF: cystic fibrosis; GAST: Global Alignment for Sequence Taxonomy; ITS1: internal transcribed spacer 1; MBL: Marine Biology Laboratories at Woods Hole; OTU: operational taxonomic unit; PCR: polymerase chain reaction; QIIME: quantitative insights into microbial ecology; qPCR: quantitative PCR; rDNA: ribosomal RNA genes; VAMPS: visualization and analysis of microbial population structures.

#### Competing interests

The authors declare that they have no competing interests.

#### Authors' contributions

AA, LAM, and EFD collected sputum samples. SDW, with important contributions from EFD, prepared sputum samples for deep sequencing analysis. SDW performed the qPCR analysis of fungi DNA, and SDW and LMF in consultation with GAO performed the qPCR analyses of bacterial DNA. THH performed the statistical analyses. SDW, HGM, SLG, and MLS performed the deep sequencing and its analysis. SDW, AS, and MLS modified and refined the fungal database for usage in VAMPS. DAH and AA contributed to study design. SDW and DAH wrote the manuscript with important contributions from coauthors, especially HLM and MLS. All authors read and gave approval to the final manuscript.

#### Acknowledgements

The authors would like to thank Dr. Jason Stajich and Dr. Greg (Dai) Gu for their support creating the BLAST-based mycobiome analysis tool and for their constructive comments. Furthermore, we would like to thank all other researchers in the Hogan lab as well as the anonymous reviewers for their support and useful suggestions. Research reported in this publication was supported by grants from the National Institutes of Health to DAH (R01GM108492), an award from the Hitchcock Foundation (DAH), and a pilot SYNERGY grant (AA and DAH) and a grant from the Alfred P. Sloan Foundation's Microbiology of the Built Environment (MLS). Support was also provided by 2R37AI83256-06 (G.A.O.). Support from the Cystic Fibrosis Foundation Research Development Program (STANTO07R0) and an Institutional Development Award (IDeA) from the National Institute of General Medical Sciences of the National Institutes of Health under grant number P30GM106394 facilitated these studies through support of the Dartmouth Lung Biology Translational Research Core. The work presented is solely the responsibility of the authors and does not necessarily represent the official views of the National Institutes of Health.

#### Author details

<sup>1</sup>Geisel School of Medicine at Dartmouth, Hanover, NH, USA. <sup>2</sup>Josephine Bay Paul Center for Comparative Molecular Biology and Evolution, Marine Biological Laboratory, Woods Hole, MA, USA. <sup>3</sup>Dartmouth-Hitchcock Medical Center, Section of Pulmonary and Critical Care Medicine, Lebanon, NH, USA. <sup>4</sup>Earth and Environmental Sciences, University of Michigan, Ann Arbor, MI, USA.

Received: 28 April 2014 Accepted: 25 September 2014

Published: 3 November 2014

#### References

1. Tunney MM, Klem ER, Fodor AA, Gilpin DF, Moriarty TF, McGrath SJ, Muhlebach MS, Boucher RC, Cardwell C, Doering G, Elborn JS, Wolfgang MC: **Use of culture and molecular analysis to determine the effect of antibiotic treatment on microbial community diversity and abundance during exacerbation in patients with cystic fibrosis.** *Thorax* 2011, **66**(7):579–584.
2. Filkins LM, Hampton TH, Gifford AH, Gross MJ, Hogan DA, Sogin ML, Morrison HG, Paster BJ, O'Toole GA: **Prevalence of streptococci and increased polymicrobial diversity associated with cystic fibrosis patient stability.** *J Bacteriol* 2012, **194**(17):4709–4717.
3. Spilker T, Vandamme P, Lipuma JJ: **A multilocus sequence typing scheme implies population structure and reveals several putative novel *Achromobacter* species.** *J Clin Microbiol* 2012, **50**(9):3010–3015.
4. Zhao J, Schloss PD, Kalikin LM, Carmody LA, Foster BK, Petrosino JF, Cavalcoli JD, VanDevanter DR, Murray S, Li JZ, Young VB, LiPuma JJ: **Decade-long bacterial community dynamics in cystic fibrosis airways.** *Proc Natl Acad Sci U S A* 2012, **109**(15):5809–5814.
5. Sibley CD, Parkins MD, Rabin HR, Duan K, Norgaard JC, Surette MG: **A polymicrobial perspective of pulmonary infections exposes an enigmatic pathogen in cystic fibrosis patients.** *Proc Natl Acad Sci U S A* 2008, **105**(39):15070–15075.
6. Fodor AA, Klem ER, Gilpin DF, Elborn JS, Boucher RC, Tunney MM, Wolfgang MC: **The adult cystic fibrosis airway microbiota is stable over time and infection type, and highly resilient to antibiotic treatment of exacerbations.** *PLoS One* 2012, **7**(9):e45001.
7. Stressmann FA, Rogers GB, van der Gast CJ, Marsh P, Vermeer LS, Carroll MP, Hoffman L, Daniels TW, Patel N, Forbes B, Bruce KD: **Long-term cultivation-independent microbial diversity analysis demonstrates that bacterial communities infecting the adult cystic fibrosis lung show stability and resilience.** *Thorax* 2012, **67**(10):867–873.
8. Leclair LW, Hogan DA: **Mixed bacterial-fungal infections in the CF respiratory tract.** *Med Mycol* 2010, **48**(01):S125–S132.
9. Morales DK, Hogan DA: ***Candida albicans* interactions with bacteria in the context of human health and disease.** *PLoS Pathog* 2010, **6**(4):e1000886.
10. Peleg AY, Hogan DA, Mylonakis E: **Medically important bacterial-fungal interactions.** *Nat Rev Microbiol* 2010, **8**(5):340–349.
11. Hoppe JE, Theurer-Mainka U, Stern M: **Comparison of three methods for culturing throat swabs from cystic fibrosis patients.** *J Clin Microbiol* 1995, **33**(7):1896–1898.
12. Bakare N, Rickerts V, Bargon J, Just-Nubling G: **Prevalence of *Aspergillus fumigatus* and other fungal species in the sputum of adult patients with cystic fibrosis.** *Mycoses* 2003, **46**(1–2):19–23.
13. Haase G, Skopnik H, Groten T, Kusenbach G, Posselt HG: **Long-term fungal cultures from sputum of patients with cystic fibrosis.** *Mycoses* 1991, **34**(9–10):373–376.
14. Hughes WT, Kim HK: **Mycoflora in cystic fibrosis: some ecologic aspects of *Pseudomonas aeruginosa* and *Candida albicans*.** *Mycopathol Mycol Appl* 1973, **50**(3):261–269.
15. Bauernfeind A, Bertele RM, Harms K, Horl G, Jungwirth R, Petermuller C, Przyklenk B, Weisslein-Pfister C: **Qualitative and quantitative microbiological analysis of sputa of 102 patients with cystic fibrosis.** *Infection* 1987, **15**(4):270–277.
16. Chotirmall SH, O'Donoghue E, Bennett K, Gunaratnam C, O'Neill SJ, McElvaney NG: **Sputum *Candida albicans* presages FEV1 decline and hospitalized exacerbations in cystic fibrosis.** *Chest* 2010, **138**(5):1186–1195.
17. Doern GV, Brogden-Torres B: **Optimum use of selective plated media in primary processing of respiratory tract specimens from patients with cystic fibrosis.** *J Clin Microbiol* 1992, **30**(10):2740–2742.
18. Gungör O, Tamay Z, Güler N, Erturan Z: **Frequency of fungi in respiratory samples from Turkish cystic fibrosis patients.** *Mycoses* 2012, **56**(2):123–129.
19. Delhaes L, Monchy S, Frealle E, Hubans C, Salleron J, Leroy S, Prevotat A, Wallet F, Wallaert B, Dei-Cas E, Sime-Ngando T, Chabe M, Viscogliosi E: **The airway microbiota in cystic fibrosis: a complex fungal and bacterial community—implications for therapeutic management.** *PLoS One* 2012, **7**(4):e36313.
20. Navarro J, Rainisio M, Harms HK, Hodson ME, Koch C, Mastella G, Strandvik B, McKenzie SG: **Factors associated with poor pulmonary function: cross-sectional analysis of data from the ERCF. European Epidemiologic Registry of Cystic Fibrosis.** *Eur Respir J* 2001, **18**(2):298–305.
21. Storey DG, Ujack EE, Rabin HR, Mitchell I: ***Pseudomonas aeruginosa lasR* transcription correlates with the transcription of *lasA*, *lasB*, and *toxA* in chronic lung infections associated with cystic fibrosis.** *Infect Immun* 1998, **66**(6):2521–2528.
22. Amin R, Dupuis A, Aaron SD, Ratjen F: **The effect of chronic infection with *Aspergillus fumigatus* on lung function and hospitalization in patients with cystic fibrosis.** *Chest* 2010, **137**(1):171–176.
23. Masoud-Landgraf L, Badura A, Eber E, Feierl G, Marth E, Buzina W: **Modified culture method detects a high diversity of fungal species in cystic fibrosis patients.** *Med Mycol* 2013, **52**(2):179–186.

24. Parize P, Billaud S, Bienvu AL, Bourdy S, le Pogam MA, Reix P, Picot S, Robert R, Lortholary O, Bouchara JP, Durieu I: **Impact of *Scedosporium apiospermum* complex seroprevalence in patients with cystic fibrosis.** *J Cyst Fibros* 2014. doi:10.1016/j.jcf.2014.01.011.
25. Bernhardt A, Sedlacek L, Wagner S, Schwarz C, Wurstl B, Tintelnot K: **Multilocus sequence typing of *Scedosporium apiospermum* and *Pseudallescheria boydii* isolates from cystic fibrosis patients.** *J Cyst Fibros* 2013, **12**(6):592–598.
26. Packeu A, Lebecque P, Rodriguez-Villalobos H, Boeras A, Hendrickx M, Bouchara JP, Symoens F: **Molecular typing and antifungal susceptibility of *Exophiala* isolates from patients with cystic fibrosis.** *J Med Microbiol* 2012, **61**(Pt 9):1226–1233.
27. Hickey PW, Sutton DA, Fothergill AW, Rinaldi MG, Wickes BL, Schmidt HJ, Walsh TJ: ***Trichosporon mycotoxinivorans*, a novel respiratory pathogen in patients with cystic fibrosis.** *J Clin Microbiol* 2009, **47**(10):3091–3097.
28. Nagano Y, Elborn JS, Millar BC, Walker JM, Goldsmith CE, Rendall J, Moore JE: **Comparison of techniques to examine the diversity of fungi in adult patients with cystic fibrosis.** *Med Mycol* 2010, **48**(1):166–76 e1.
29. In *Respiratory cultures from Cystic Fibrosis patients*, in *Clinical Microbiology Procedures Handbook*. Edited by Garcia L. ASM Press; 2010.
30. Price KE, Hampton TH, Gifford AH, Dolben EL, Hogan DA, Morrison HG, Sogin ML, O'Toole GA: **Unique microbial communities persist in individual cystic fibrosis patients throughout a clinical exacerbation.** *Microbiome* 2013, **1**(1):27.
31. Jubin V, Ranque S, Stremmer L, Le B, Sarles J, Dubus JC: **Risk factors for *Aspergillus* colonization and allergic bronchopulmonary aspergillosis in children with cystic fibrosis.** *Pediatr Pulmonol* 2010, **45**(8):764–771.
32. Burns J, Van Dalen J, Shawar R, Otto K, Garber R, Quan J, Montgomery A, Albers G, Ramsey B, Smith A: **Effect of intermittent administration of inhaled tobramycin on respiratory microbial flora in patients with cystic fibrosis.** *J Infect Dis* 1999, **179**:1190–1196.
33. Cheer SM, Waugh J, Noble S: **Inhaled tobramycin (TOBI): a review of its use in the management of *Pseudomonas aeruginosa* infections in patients with cystic fibrosis.** *Drugs* 2003, **63**(22):2501–2520.
34. Sudfeld CR, Dasenbrook EC, Merz WG, Carroll KC, Boyle MP: **Prevalence and risk factors for recovery of filamentous fungi in individuals with cystic fibrosis.** *J Cyst Fibros* 2010, **9**(2):110–116.
35. Kerr J: **Inhibition of fungal growth by *Pseudomonas aeruginosa* and *Pseudomonas cepacia* isolated from patients with cystic fibrosis.** *J Infect* 1994, **28**:305–310.
36. Mastella G, Rainisio M, Harms HK, Hodson ME, Koch C, Navarro J, Strandvik B, McKenzie SG: **Allergic bronchopulmonary aspergillosis in cystic fibrosis. A European epidemiological study.** *Epidemiologic Registry of Cystic Fibrosis.* *Eur Respir J* 2000, **16**(3):464–471.
37. Krcmery V Jr, Matejicka F, Pichnova E, Jurga L, Sulcova M, Kunova A, West D: **Documented fungal infections after prophylaxis or therapy with wide spectrum antibiotics: relationship between certain fungal pathogens and particular antimicrobials?** *J Chemother* 1999, **11**(5):385–390.
38. Hebert C, Villaran R, Tolentino J, Best L, Boonlayangoor S, Pitrak D, Lin M, Weber SG: **Prior antimicrobial exposure and the risk for bloodstream infection with fluconazole-non-susceptible *Candida* strains.** *Scand J Infect Dis* 2010, **42**(6–7):506–509.
39. Wey SB, Mori M, Pfaller MA, Woolson RF, Wenzel RP: **Risk factors for hospital-acquired candidemia. A matched case-control study.** *Arch Intern Med* 1989, **149**(10):2349–2353.
40. Charles PE, Dalle F, Aube H, Doise JM, Quenot JP, Aho LS, Chavanet P, Blettery B: ***Candida* spp. colonization significance in critically ill medical patients: a prospective study.** *Intensive Care Med* 2005, **31**(3):393–400.
41. Soysa NS, Samaranyake LP, Ellepola AN: **Antimicrobials as a contributory factor in oral candidosis—a brief overview.** *Oral Dis* 2008, **14**(2):138–143.
42. Xu J, Schwartz K, Bartoces M, Monsur J, Severson RK, Sobel JD: **Effect of antibiotics on vulvovaginal candidiasis: a MetroNet study.** *J Am Board Fam Med* 2008, **21**(4):261–268.
43. Samonis G, Anastassiadou H, Dassiou M, Tselentis Y, Bodey GP: **Effects of broad-spectrum antibiotics on colonization of gastrointestinal tracts of mice by *Candida albicans*.** *Antimicrob Agents Chemother* 1994, **38**(3):602–603.
44. Samonis G, Gikas A, Toloudis P, Maraki S, Vrentzos G, Tselentis Y, Tsaparas N, Bodey G: **Prospective study of the impact of broad-spectrum antibiotics on the yeast flora of the human gut.** *Eur J Clin Microbiol Infect Dis* 1994, **13**(8):665–667.
45. Giuliano M, Barza M, Jacobus NV, Gorbach SL: **Effect of broad-spectrum parenteral antibiotics on composition of intestinal microflora of humans.** *Antimicrob Agents Chemother* 1987, **31**(2):202–206.
46. Leaw SN, Chang HC, Sun HF, Barton R, Bouchara JP, Chang TC: **Identification of medically important yeast species by sequence analysis of the internal transcribed spacer regions.** *J Clin Microbiol* 2006, **44**(3):693–699.
47. Pryce TM, Palladino S, Kay ID, Coombs GW: **Rapid identification of fungi by sequencing the ITS1 and ITS2 regions using an automated capillary electrophoresis system.** *Med Mycol* 2003, **41**(5):369–381.
48. Ghannoum MA, Jurevic RJ, Mukherjee PK, Cui F, Sikaroodi M, Naqvi A, Gillevet PM: **Characterization of the oral fungal microbiome (mycobiome) in healthy individuals.** *PLoS Pathog* 2010, **6**(1):e1000713.
49. Ferrer C, Colom F, Frases S, Mulet E, Abad JL, Alío JL: **Detection and identification of fungal pathogens by PCR and by ITS2 and 5.8S ribosomal DNA typing in ocular infections.** *J Clin Microbiol* 2001, **39**(8):2873–2879.
50. Borman AM, Linton CJ, Miles SJ, Johnson EM: **Molecular identification of pathogenic fungi.** *J Antimicrob Chemother* 2008, **61**(Suppl 1):i7–i12.
51. Spiess B, Seifarth W, Hummel M, Frank O, Fabarius A, Zheng C, Morz H, Hehlmann R, Buchheidt D: **DNA microarray-based detection and identification of fungal pathogens in clinical samples from neutropenic patients.** *J Clin Microbiol* 2007, **45**(11):3743–3753.
52. Kittelmann S, Naylor GE, Koolaard JP, Janssen PH: **A proposed taxonomy of anaerobic fungi (class *neocallimastigomycetes*) suitable for large-scale sequence-based community structure analysis.** *PLoS One* 2012, **7**(5):e36866.
53. Huse SM, Mark DB, Welch A, Voorhis A, Shipunova HG, Morrison AM, Eren, Sogin ML: **VAMPS: a website for visualization and analysis of microbial population structures.** *BMC Bioinformatics* 2014, **15**(1):41.
54. Huse SM, Dethlefsen L, Huber JA, Mark D, Welch DA, Relman, Sogin ML: **Exploring microbial diversity and taxonomy using SSU rRNA hypervariable tag sequencing.** *PLoS Genet* 2008, **4**(11):e1000255.
55. Huse SM, Welch DM, Morrison HG, Sogin ML: **Ironing out the wrinkles in the rare biosphere through improved OTU clustering.** *Environ Microbiol* 2010, **12**(7):1889–1898.
56. Huber JA, Mark Welch DB, Morrison HG, Huse SM, Neal PR, Butterfield DA, Sogin ML: **Microbial population structures in the deep marine biosphere.** *Science* 2007, **318**(5847):97–100.
57. Madan JC, Koestler DC, Stanton BA, Davidson L, Moulton LA, Housman ML, Moore JH, Guill MF, Morrison HG, Sogin ML, Hampton TH, Karagas MR, Palumbo PE, Foster JA, Hibberd LA, O'Toole GA: **Serial analysis of the gut and respiratory microbiome in cystic fibrosis in infancy: interaction between intestinal and respiratory tracts and impact of nutritional exposures.** *MBio* 2012, **3**(4):e00251–12.
58. Koljalg U, Nilsson RH, Abarenkov K, Tedersoo L, Taylor AF, Bahram M, Bates ST, Bruns TD, Bengtsson-Palme J, Callaghan TM, Douglas B, Drenkhan T, Eberhardt U, Duenas M, Grebenc T, Griffith GW, Hartmann M, Kirk PM, Kohout P, Larsson E, Lindahl BD, Lücking R, Martin MP, Matheny PB, Nguyen NH, Niskanen T, Oja J, Peay KG, Peintner U, Peterson M, et al: **Towards a unified paradigm for sequence-based identification of fungi.** *Mol Ecol* 2013, **22**(21):5271–5277.
59. Bruns T, White T, Taylor J: **Fungal molecular systematics.** *Annu Rev Ecol Syst* 1991, **22**:525–564.
60. Yao C, Frederiksen RA, Magill CW: **Length heterogeneity in ITS 2 and the methylation status of CCGG and GCGC sites in the rRNA genes of the genus *Peronosclerospora*.** *Curr Genet* 1992, **22**(5):415–420.
61. Longo AV, Rodriguez D, Da Silva D, Leite LF, Toledo C, Mendoza A, Burrows PA, Zamudio KR: **ITS1 copy number varies among *Batrachochytrium dendrobatidis* strains: implications for qPCR estimates of infection intensity from field-collected amphibian skin swabs.** *PLoS One* 2013, **8**(3):e59499.
62. Nilsson RH, Kristiansson E, Ryberg M, Hallenberg N, Larsson KH: **Intraspecific ITS variability in the kingdom fungi as expressed in the international sequence databases and its implications for molecular species identification.** *Evol Bioinform Online* 2008, **4**:193–201.
63. Bittar F, Rolain JM: **Detection and accurate identification of new or emerging bacteria in cystic fibrosis patients.** *Clin Microbiol Infect* 2010, **16**(7):809–820.
64. Sibley CD, Rabin H, Surette MG: **Cystic fibrosis: a polymicrobial infectious disease.** *Future Microbiol* 2006, **1**(1):53–61.

65. Zemanick ET, Harris JK, Wagner BD, Robertson CE, Sagel SD, Stevens MJ, Accurso FJ, Laguna TA: **Inflammation and airway microbiota during cystic fibrosis pulmonary exacerbations.** *PLoS One* 2013, **8**(4):e62917.
66. Hirschi S, Letscher-Bru V, Pottecher J, Lannes B, Jeung MY, Degot T, Santelmo N, Sabou AM, Herbrecht R, Kessler R: **Disseminated *Trichosporon mycotoxinivorans*, *Aspergillus fumigatus*, and *Scedosporium apiospermum* coinfection after lung and liver transplantation in a cystic fibrosis patient.** *J Clin Microbiol* 2012, **50**(12):4168–4170.
67. Kothavade RJ, Kura MM, Valand AG, Panthaki MH: ***Candida tropicalis*: its prevalence, pathogenicity and increasing resistance to fluconazole.** *J Med Microbiol* 2010, **59**(Pt 8):873–880.
68. Davies AN, Brailsford S, Broadley K, Beighton D: **Oral yeast carriage in patients with advanced cancer.** *Oral Microbiol Immunol* 2002, **17**(2):79–84.
69. Xu J, Mitchell TG: **Geographical differences in human oral yeast flora.** *Clin Infect Dis* 2003, **36**(2):221–224.
70. Silva S, Negri M, Henriques M, Oliveira R, Williams DW, Azeredo J: ***Candida glabrata*, *Candida parapsilosis* and *Candida tropicalis*: biology, epidemiology, pathogenicity and antifungal resistance.** *FEMS Microbiol Rev* 2012, **36**(2):288–305.
71. Mounier J, Gouello A, Keravec M, Le Gal S, Pacini G, Debaets S, Nevez G, Rault G, Barbier G, Hery-Arnaud G: **Use of denaturing high-performance liquid chromatography (DHPLC) to characterize the bacterial and fungal airway microbiota of cystic fibrosis patients.** *J Microbiol* 2014, **52**(4):307–314.
72. Findley K, Oh J, Yang J, Conlan S, Deming C, Meyer JA, Schoenfeld D, Nomicos E, Park M, Kong HH, Segre JA: **Topographic diversity of fungal and bacterial communities in human skin.** *Nature* 2013, **498**(7454):367–370.
73. Hauser PM, Bernard T, Greub G, Jaton K, Pagni M, Hafen GM: **Microbiota present in cystic fibrosis lungs as revealed by whole genome sequencing.** *PLoS One* 2014, **9**(3):e90934.
74. Charlson ES, Diamond JM, Bittinger K, Fitzgerald AS, Yadav A, Haas AR, Bushman FD, Collman RG: **Lung-enriched organisms and aberrant bacterial and fungal respiratory microbiota after lung transplant.** *Am J Respir Crit Care Med* 2012, **186**(6):536–545.
75. Hogan DA, Vik A, Kolter R: **A *Pseudomonas aeruginosa* quorum-sensing molecule influences *Candida albicans* morphology.** *Mol Microbiol* 2004, **54**(5):1212–1223.
76. Morales DK, Grahl N, Okegbe C, Dietrich LE, Jacobs NJ, Hogan DA: **Control of *Candida albicans* metabolism and biofilm formation by *Pseudomonas aeruginosa* phenazines.** *MBio* 2013, **4**(1):e00526–12.
77. Hogan DA, Kolter R: ***Pseudomonas-Candida* interactions: an ecological role for virulence factors.** *Science* 2002, **296**(5576):2229–2232.
78. Gibson J, Sood A, Hogan DA: ***Pseudomonas aeruginosa-Candida albicans* interactions: localization and fungal toxicity of a phenazine derivative.** *Appl Environ Microbiol* 2009, **75**(2):504–513.
79. Lindsay AK, Morales DK, Liu Z, Grahl N, Zhang A, Willger SD, Myers LC, Hogan DA: **Analysis of *Candida albicans* mutants defective in the Cdk8 module of mediator reveal links between metabolism and biofilm formation.** *PLoS Genet* 2014, **10**(10):e1004567.
80. Cugini C, Morales DK, Hogan DA: ***Candida albicans*-produced farnesol stimulates *Pseudomonas* quinolone signal production in LasR-defective *Pseudomonas aeruginosa* strains.** *Microbiology* 2010, **156**(Pt 10):3096–3107.
81. McAlester G, O'Gara F, Morrissey JP: **Signal-mediated interactions between *Pseudomonas aeruginosa* and *Candida albicans*.** *J Med Microbiol* 2008, **57**(Pt 5):563–569.
82. Samonis G, Gikas A, Anaissie EJ, Vrenzos G, Maraki S, Tselentis Y, Bodey GP: **Prospective evaluation of effects of broad-spectrum antibiotics on gastrointestinal yeast colonization of humans.** *Antimicrob Agents Chemother* 1993, **37**(1):51–53.
83. Mulligan ME, Citron DM, McNamara BT, Finegold SM: **Impact of cefoperazone therapy on fecal flora.** *Antimicrob Agents Chemother* 1982, **22**(2):226–230.
84. Abbott J: **Clinical and microscopic diagnosis of vaginal yeast infection: a prospective analysis.** *Ann Emerg Med* 1995, **25**(5):587–591.
85. Oksala E: **Factors predisposing to oral yeast infections.** *Acta Odontol Scand* 1990, **48**(1):71–74.
86. Leyden JJ, Marples RR: **Ecologic principles and antibiotic therapy in chronic dermatoses.** *Arch Dermatol* 1973, **107**(2):208–211.
87. Ben-Ami R, Olshtain-Pops K, Krieger M, Oren I, Bishara J, Dan M, Wiener-Well Y, Weinberger M, Zimhony O, Chowers M, Weber G, Potasman I, Chazan B, Kassis I, Shalit I, Block C, Keller N, Kontoyiannis DP, Giladi M: **Antibiotic exposure as a risk factor for fluconazole-resistant *Candida* bloodstream infection.** *Antimicrob Agents Chemother* 2012, **56**(5):2518–2523.
88. Bow EJ, Louie TJ: **Changes in endogenous microflora among febrile granulocytopenic patients receiving empiric antibiotic therapy: implications for fungal superinfection.** *CMAJ* 1987, **137**(5):397–403.
89. Dollive S, Chen YY, Grunberg S, Bittinger K, Hoffmann C, Vandivier L, Cuff C, Lewis JD, Wu GD, Bushman FD: **Fungi of the murine gut: episodic variation and proliferation during antibiotic treatment.** *PLoS One* 2013, **8**(8):e71806.
90. Rogers GB, Cuthbertson L, Hoffman LR, Wing PA, Pope C, Hooftman DA, Lilley AK, Oliver A, Carroll MP, Bruce KD, van der Gast CJ: **Reducing bias in bacterial community analysis of lower respiratory infections.** *ISME J* 2013, **7**(4):697–706.
91. Young VB, Raffals LH, Huse SM, Vital M, Dai D, Schloss PD, Brulc JM, Antonopoulos DA, Arrieta RL, Kwon JH, Reddy KG, Hubert NA, Grim SL, Vineis JH, Dalal S, Morrison HG, Eren AM, Meyer F, Schmidt TM, Tiedje JM, Chang EB, Sogin ML: **Multiphase analysis of the temporal development of the distal gut microbiota in patients following ileal pouch anal anastomosis.** *Microbiome* 2013, **1**(1):9.
92. Huse SM, Huber JA, Morrison HG, Sogin ML, Welch DM: **Accuracy and quality of massively parallel DNA pyrosequencing.** *Genome Biol* 2007, **8**(7):R143.
93. Edgar RC, Haas BJ, Clemente JC, Quince C, Knight R: **UCHIME improves sensitivity and speed of chimera detection.** *Bioinformatics* 2011, **27**(16):2194–2200.
94. Huse SM, Young VB, Morrison HG, Antonopoulos DA, Kwon J, Dalal S, Arrieta R, Hubert NA, Shen L, Vineis JH, Koval JC, Sogin ML, Chang EB, Raffals LE: **Comparison of brush and biopsy sampling methods of the ileal pouch for assessment of mucosa-associated microbiota of human subjects.** *Microbiome* 2014, **2**(1):5.
95. Eren AM, Vineis JH, Morrison HG, Sogin ML: **A filtering method to generate high quality short reads using illumina paired-end technology.** *PLoS One* 2013, **8**(6):e66643.
96. Quast C, Pruesse E, Yilmaz P, Gerken J, Schwier T, Yarza P, Peplies J, Glockner FO: **The SILVA ribosomal RNA gene database project: improved data processing and web-based tools.** *Nucleic Acids Res* 2013, **41**(Database issue):D590–D596.
97. Edgar RC: **Search and clustering orders of magnitude faster than BLAST.** *Bioinformatics* 2010, **26**(19):2460–2461.
98. Caporaso JG, Bittinger K, Bushman FD, DeSantis TZ, Andersen GL, Knight R: **PyNAST: a flexible tool for aligning sequences to a template alignment.** *Bioinformatics* 2010, **26**(2):266–267.
99. Jacobs J: *Individual Based Rarefaction using R-package*; 2011.
100. Liu CM, Kachur S, Dwan MG, Abraham AG, Aziz M, Hsueh PR, Huang YT, Busch JD, Lamit LJ, Gehring CA, Keim P, Price LB: **FungiQuant: a broad-coverage fungal quantitative real-time PCR assay.** *BMC Microbiol* 2012, **12**:255.
101. Horz HP, Vianna ME, Gomes BP, Conrads G: **Evaluation of universal probes and primer sets for assessing total bacterial load in clinical samples: general implications and practical use in endodontic antimicrobial therapy.** *J Clin Microbiol* 2005, **43**(10):5332–5337.
102. Maeda H, Fujimoto C, Haruki Y, Maeda T, Kokeguchi S, Petelin M, Arai H, Tanimoto I, Nishimura F, Takashiba S: **Quantitative real-time PCR using TaqMan and SYBR Green for *Actinobacillus actinomycetemcomitans*, *Porphyromonas gingivalis*, *Prevotella intermedia*, *tetQ* gene and total bacteria.** *FEMS Immunol Med Microbiol* 2003, **39**(1):81–86.
103. Goslee SC, Urban DL: **The ecodist package for dissimilarity-based analysis of ecological data.** *J Stat Softw* 2007, **22**:1–19.
104. Dixon P: **VEGAN, a package of R functions for community ecology.** *J Veg Sci* 2003, **14**(6):927–930.

doi:10.1186/2049-2618-2-40

Cite this article as: Willger et al.: Characterization and quantification of the fungal microbiome in serial samples from individuals with cystic fibrosis. *Microbiome* 2014 **2**:40.