


# Long term assessment of root coverage stability using connective tissue graft with or without an epithelial collar for gingival recession treatment. A 12-year follow-up from a randomized clinical trial

Shayan Barootchi<sup>1</sup>  | Lorenzo Tavelli<sup>1</sup>  | Riccardo Di Gianfilippo<sup>1</sup>  |  
Ho-Young Byun<sup>1,2</sup> | Tae-Ju Oh<sup>1</sup>  | Luigi Barbato<sup>3</sup> | Francesco Cairo<sup>3</sup>  |  
Hom-Lay Wang<sup>1</sup> 

<sup>1</sup>Department of Periodontics & Oral Medicine, University of Michigan School of Dentistry, Ann Arbor, MI, USA

<sup>2</sup>Private Practice, Seoul, Korea

<sup>3</sup>Department of Surgery and Translational Medicine, Research Unit in Periodontology and Periodontal Medicine, University of Florence, Florence, Italy

## Correspondence

Hom-Lay Wang, Department of Periodontics and Oral Medicine, University of Michigan School of Dentistry, 1011 North University Avenue, Ann Arbor, MI 48109-1078, USA.  
Email: homlay@umich.edu

## Funding information

This paper was partially supported by the University of Michigan Periodontal Graduate Student Research Fund.

## Abstract

**Aim:** To evaluate the long term root coverage outcomes of coronally advanced flap plus a connective tissue graft with (CAF + CTG) or without an epithelial collar (CAF + ECTG), and evaluate the adjacent treated sites included in the flap.

**Methods:** Seventeen of the original 20 subjects included in the randomized clinical trial were available at 12 years (43 sites). Mean root coverage (mRC), keratinized tissue width (KTW), gingival thickness (GT) on the grafted and adjacent sites were evaluated and compared with baseline and 6 months.

**Result:** There was a reduction in the mRC at all sites: 16.52% in the CAF + CTG ( $p > .05$ ), 19.42% in the CAF + ECTG ( $p < .05$ ) and 34.12% in the CAF-alone (adjacent treated sites) group ( $p < .05$ ). No significant differences were observed within the groups for changes in KTW, GT and clinical attachment level (CAL) ( $p > .05$ ). Keratinized tissue width at baseline and at 6 months was found to be predictors for the stability of the gingival margin in the long term.

**Conclusions:** CAF + CTG and CAF + ECTG were found equally efficacious in maintaining the levels of the gingival margin with a small amount of relapse over the period of 12 years while CAF-alone sites showed a greater gingival recession (GR) reoccurrence.

## KEYWORDS

follow-up studies, gingival recession, long term care, surgical flaps, tooth root

## 1 | INTRODUCTION

The long term stability of outcomes achieved with periodontal surgery has been of great interest in the scientific community (Cortellini, Buti, Pini Prato, & Tonetti, 2017; Pini Prato, Franceschi, Cortellini, & Chambrone, 2018; Pini Prato, Magnani, & Chambrone, 2018; Rasperini et al., 2018; Tavelli, Barootchi, Di Gianfilippo, et

al., 2019). In addition, whether the obtained surgical outcomes are maintained over time without requiring a secondary procedure is also a concern for many clinicians as well as for patients. Cortellini et al. demonstrated the superiority of regenerative techniques over access flap surgery in a 20-year follow-up study (Cortellini et al., 2017). However, it is interesting to note that most of the differences between regenerative techniques and open flap (in terms of

percentage of lost dentition, and cost of retreatment) were found in the second decade of their observation, which would not have been detected had the study been only up to 10 years (Cortellini et al., 2017). This raised a concern regarding the definition of long term. In a recent systematic review, Chambrone & Tatakis defined "long term" for studies with a duration of  $\geq 24$  months, concluding that untreated GRs have a high probability of worsening over time (Chambrone & Tatakis, 2016). Other studies have reported the outcomes of root coverage at 3 or 5 years, referring to their period of observation as "long term" as well. (Jepsen, Stefanini, Sanz, Zucchelli, & Jepsen, 2017; Kuis et al., 2013; Zucchelli et al., 2014). Despite a recently published definition regarding short- (6–12 months), medium- (13–59 months), long term (5 > years) for periodontal plastic surgery (Chambrone et al., 2018), undoubtedly, most of the studies on the outcomes of root coverage procedures conclude at 6 months or 1 year.

It has been suggested that several factors, including the addition of a connective tissue graft (CTG) and patient maintenance and motivation, have an impact on the long term stability of the gingival margin (McGuire, Scheyer, & Snyder, 2014; Pini Prato et al., 2011; Rasperini et al., 2018; Tavelli, Barootchi, Greenwell, & Wang, 2019). Nickles, Ratka-Kruger, Neukranz, Raetzke, and Eickholz (2010) compared the long term outcomes of treated isolated GRs either with a CTG or guided tissue regeneration. While both groups showed a significant reoccurrence after 10 years, the authors reported that CTG provided greater stability of the outcomes. Similarly, an apical relapse of the gingival margin was also observed after 8 and 14 years following CAF alone (Pini Prato et al., 2011; Pini-Prato et al., 2012). McGuire et al. showed that biologic agents, such as platelet-derived growth factors (PDGFs) and enamel matrix derivatives (EMDs), seemed to maintain the stability of root coverage procedures up to 5 and 10 years (McGuire, Scheyer, & Nunn, 2012; McGuire et al., 2014), respectively, suggesting that the healing with regeneration rather than repair may be also a key factor for the stability of the gingival margin.

Pini-Prato and coworkers recently reported the 20-year outcomes of CAF alone (Pini Prato, Magnani, et al., 2018) and CAF + CTG (Pini Prato, Franceschi, et al., 2018), highlighting the importance of baseline KTW, condition of the interdental tissue and presence of non-carious cervical lesions on the probability of GRs recurrence. Rasperini et al. in a 9-year follow-up study confirmed the superiority of CAF + CTG over CAF alone in the long term maintenance of complete root coverage (CRC). They estimated that sites treated with CAF + CTG had 70% chance either preserving or gaining CRC, while CAF alone was related to GRs reoccurrence in 38.5% of cases (Rasperini et al., 2018).

In this scenario, whether the use of an ECTG provides higher stability of root coverage outcomes than a CTG is unknown, as a recent meta-analysis showed different results between the two approaches in the short-term (Dodge et al., 2018). Therefore, the aim of this study was to investigate the long term root coverage results when envelope CAF was performed with CTG or ECTG.

## Clinical Relevance

*Scientific rationale for study:* To evaluate the long term outcomes of connective tissue graft with or without an epithelial collar for the treatment of multiple adjacent gingival recessions (MAGRs) and compare them with adjacent sites treated without a graft.

*Principal findings:* CAF + CTG versus CAF + ECTG showed similar long term clinical, aesthetic and patient-related outcomes; however, CAF-alone-treated sites showed a greater tendency for recession relapse. Keratinized tissue width at baseline and 6 months was predictors for the stability of the gingival margin over time.

*Practical implications:* Although a certain amount of recession relapse may be expected for all treated areas, sites that received a graft material (CTG or ECTG) exhibited a greater gingival margin stability than non-grafted sites overtime.

## 2 | MATERIALS AND METHODS

The CONSORT statement for improving the quality of reports of parallel RCT (<http://www.consort-statement.org/>) was followed in the preparation of the present manuscript.

### 2.1 | Study design

The present study was designed as a 12-year follow-up investigation from a previous randomized clinical trial (RCT) conducted between September 2006 and June 2008 (Byun et al., 2009). Details of the study protocol, inclusion and exclusion criteria, data collection and surgical intervention have been described in the original article (Byun et al., 2009). Briefly, patients presenting with Miller class I or II GRs  $\geq 2$  mm (RT 1: GRs presenting without clinically detectable loss of interproximal attachment; Cairo, Nieri, Cincinelli, Mervelt, & Pagliaro, 2011) were recruited and randomly assigned to receive either an envelope CAF (eCAF) with subepithelial connective tissue graft (CTG) (control group) or eCAF with subepithelial connective tissue graft with an epithelial collar (ECTG) (test group). Randomization was performed by drawing a card from a bag at the time of each surgical appointment. The CAF was designed as an envelope without vertical releasing incisions and was extended to the adjacent 1–2 teeth mesial and distal to the tooth with the GR defect. For the control group, the CTG was harvested using the single-incision technique, while for the test group, the ECTG was obtained with the double incision approach where the second incision was made 2 mm apical to the first allowing to obtaining a graft with a 2 mm of epithelial collar.

The protocol for the follow-up study was approved by the Western Institutional Review Board (HUM00146261) and was in full accordance with the Helsinki Declaration of 1975, as revised in

2000. Informed consents were obtained from all the subjects who participated in this study.

## 2.2 | Intervention

All surgical procedures were performed at the University of Michigan School of Dentistry by the same operator (H.Y.B.). Each study participant received full mouth supragingival scaling, polishing and oral hygiene instruction 2 months before the scheduled surgery. In addition, patients were instructed to maintain an optimal toothbrushing technique to correct improper habits related to the aetiology of the GRs.

Patients were randomly assigned to the control (eCAF + CTG) or the test group (eCAF + ECTG) by drawing a card from a bag prior to the surgery. In addition, the patients were not aware about which treatment they received. Post-operative instructions were provided for all subjects both verbally and in a written form. After suture removal at 2 weeks, patients were instructed to resume atraumatic brushing technique using a soft-bristle toothbrush, while discontinuing the use of Chlorhexidine. A session of professional oral hygiene procedures, with oral hygiene instructions, was performed at 1, 3 and 6 months. After the recall at 6 months, professional oral hygiene procedures were performed 2–3 times a year.

## 2.3 | Study outcomes

The primary endpoint of the current investigation was to evaluate changes, in terms of mean root coverage (mRC) and complete root coverage (CRC) from 6 month to 12 years in both the eCAF + CTG and eCAF + ECTG groups independently, and to compare both approaches at 12 years.

The secondary outcomes of the study were as follows: (a) to investigate the presence of possible correlations between influential variables and stability of the gingival margin (from 6 months to 12 years); (b) to compare the stability of the outcomes in sites treated with a soft tissue graft (CTG or ECTG) to adjacent sites that presented with GRs and were included in the envelope CAF but had not received a graft; and lastly, (c) to assess the gathered patient-reported responses and test for any correlations with the changes in the gingival margin.

## 2.4 | Clinical measurements

Recession depth (REC), probing depth (PD), clinical attachment level (CAL), KTW and gingival thickness (GT) were collected as described in the original protocol at each treated site using a periodontal probe (PCP UNC 15, Hu-Friedy) by a calibrated examiner (R.D.G.) which was blinded to the treatments performed. The gingival phenotype at each treated site was compared to the contralateral and opposing sites using a colour-coded probe (Colorvue Biotpe probe, Hu-Friedy; Rasperini, Acunzo, Cannalire, & Farronato, 2015). In addition, the aesthetic outcomes were evaluated using the Root coverage Esthetic Score (RES; Cairo, Rotundo, Miller, & Pini Prato, 2009).

Lastly, patients were asked to fill out a questionnaire which included dichotomous questions and a self-evaluation form regarding the stability of their obtained results over time using a visual analogue scale (VAS) of 100 mm (Cortellini et al., 2009; Tonetti et al., 2004).

## 2.5 | Data and statistical analysis

The collected data from the RCT and the recall examination at 12 years, as well as the retrieved baseline and 6-month data of the adjacent treated sites, were gathered and entered into pre-fabricated spread sheets and coded by an author (L.T.). All analyses were performed by a different investigator with expertise in statistical analyses who had not taken part in data collection or measurements at recall appointments and was blinded to the original data (S.B.). Means and standard deviations (SDs) were calculated for continuous outcomes (REC, PD, CAL, KTW). Complete root coverage was calculated as the percentage of sites that achieved a complete coverage at 6 months and those that maintained their complete coverage at the 12-year recall and was expressed as a binary outcome. The Fisher exact test was used for comparison of CRC among different groups, and the McNemar test was used for comparing correlated samples of CRC different times.

Paired-samples *t* tests were used for evaluating the changes from 6 months to 12 years in each of the treatment groups. For comparing the differences among the groups at 12 years, linear mixed-effects and logistic regression models were produced, to explore possible correlations between the variables at baseline and 6 months, and the results at the final (12 years) recall that controlled for the type of graft material (CTG/ECTG), and the fact that each subject had contributed to more than one GR.

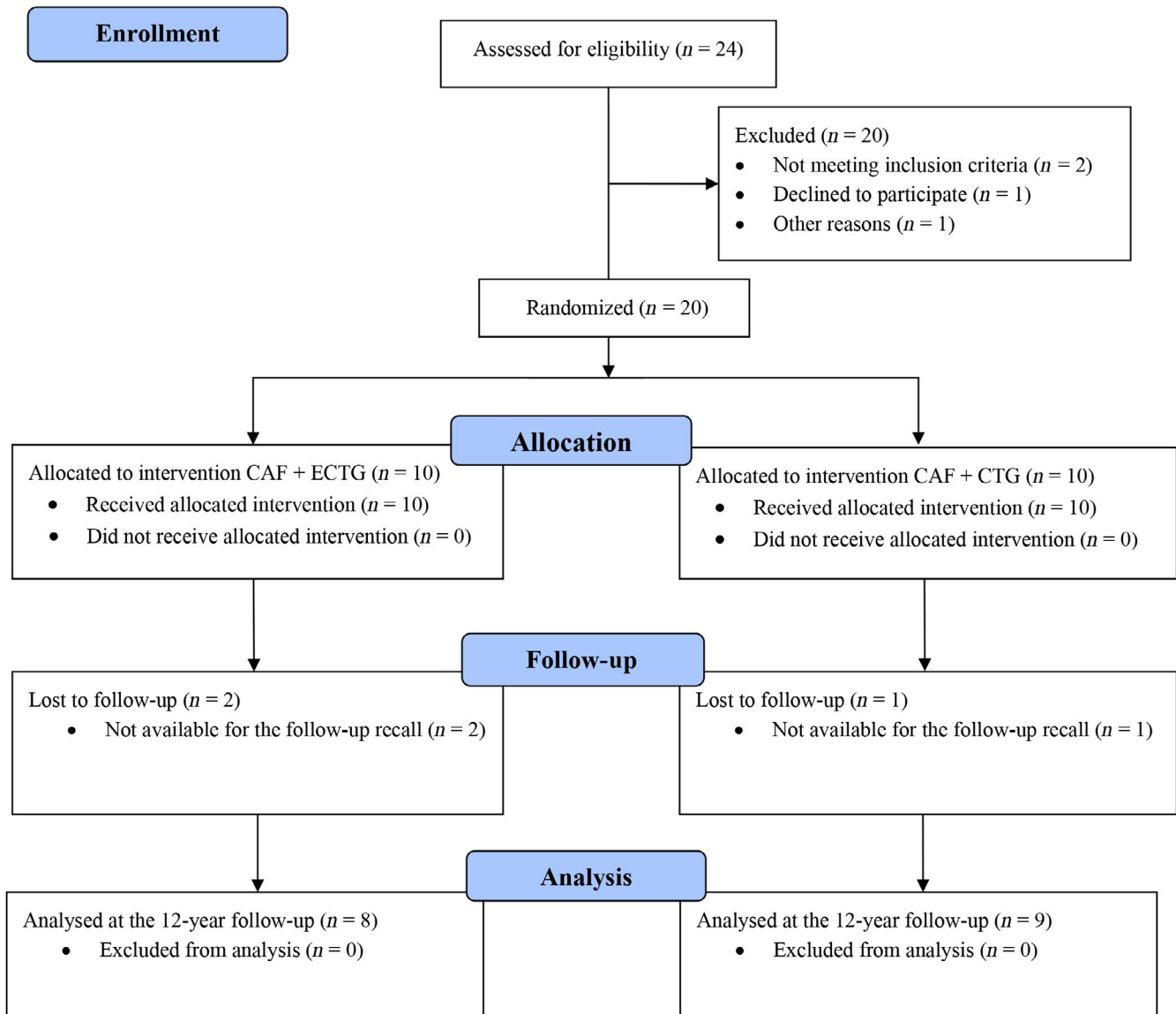
For comparison of the grafted versus adjacent non-grafted treated sites in the flap, linear mixed-effects regression models were conducted that similarly accounted for the same factors. Lastly, regression models were produced to correlate the gathered patient-reported responses to the changes in the level of the gingival margin from the 6-month recall to the current 12-year gathered data.

Confidence intervals (CI) were produced, and a *p* value threshold of .05 was set for statistical significance. Statistical analyses were performed using Rstudio (Rstudio version 1.1.383; Rstudio, Inc.), the lme4 (Bates, Maechler, Bolker, & Walker, 2015) and the dplyr packages (Wickham, Francois, Henry, & Müller, 2017).

## 3 | RESULTS

### 3.1 | Descriptive analysis

From the twenty patients that completed the study at 6 months (twelve females and eight males, with a mean age of 42.6 years), seventeen were available for the 12-year recall examination (response rate of 85%; Figure 1). Fourteen of the patients received periodic professional cleaning or supportive periodontal therapy, according to their need at least twice a year at the University of Michigan School of Dentistry, while 3 were maintained at private practices.



**FIGURE 1** CONSORT flow chart of the study

### 3.2 | Clinical outcomes

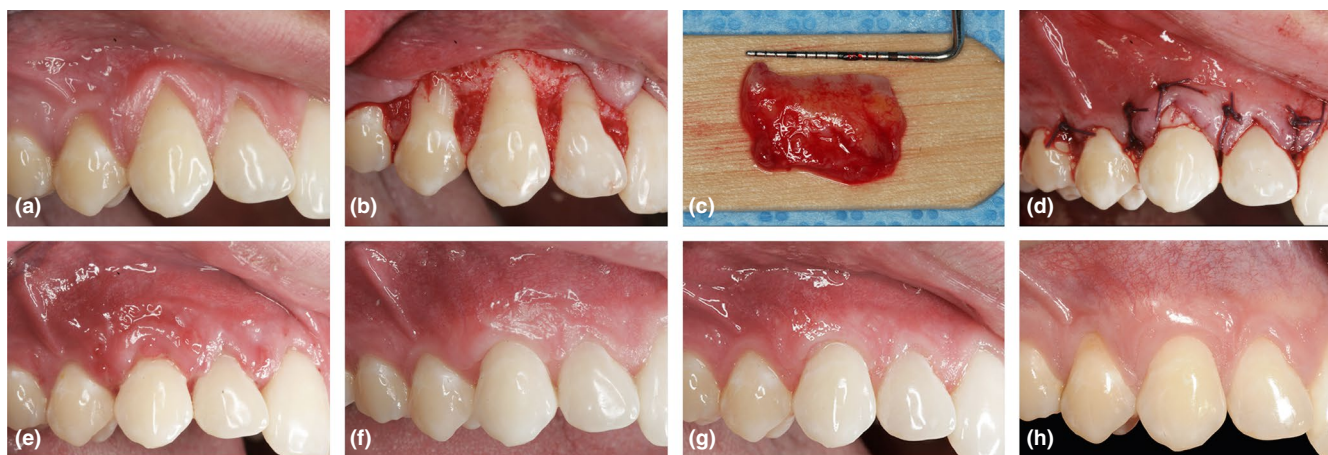
Table 1 depicts the examined clinical parameters with statistical comparisons at baseline, 6 months and 12 years for the CAF + CTG-, CAF + ECTG- and CAF-treated sites. No statistically significant differences were observed among the 3 groups for mRC at 6 months ( $p = .34$ ). At 12 years, despite an overall tendency for gingival relapse in all groups, the mRC was significantly different for the CAF-treated sites which had not received a graft material (55.2% for CAF, vs. 77.7% and 74.5% for the sites that received ECTG and CTG, respectively; Figures 2 and 3). The amount of KTW and GT was also significantly different at 6 months ( $p < .001$ ,  $p < .001$ ) and at 12 years ( $p < .001$ ,  $p < .001$ ). This was in favour of the grafted sites that showed greater KTW at 6 months for the ECTG-treated sites ( $p = .01$ ), while lacking significant differences for KTW at 12 years between the ECTG and CTG groups. Nevertheless, intergroup

comparisons at 6 months and 12 years for GT between ECTG- and CTG-treated sites did not reach statistical significance ( $p = .11$  and  $p = .09$ , respectively). When the gingival phenotypes of the treated sites were compared to their contralateral and opposing teeth, 92.3% of the ECTG-treated sites and 87.5% of the CTG-treated sites demonstrated a thickening of the gingival phenotype at 12 years, significantly more than the CAF-alone-treated areas that only presented with 28.5% thickening ( $p < .01$ ). Regarding the aesthetic assessment, at the 6-month time point, the RES evaluation scores showed averages of  $8.9 \pm 1.32$ ,  $8.4 \pm 1.51$  and  $8.25 \pm 1.73$  for the ECTG, CTG and CAF-alone-treated groups, respectively, without demonstrating statistically significant intergroup differences. ( $p > .05$ ) However, at the 12-year recall, the sites that originally received ECTG exhibited an average  $7.42 \pm 1.22$  RES score, while CTG-treated sites revealed a score of  $7.64 \pm 1.42$ , and the CAF-treated areas presented with an average RES score of  $6.45 \pm 1.36$ , a difference that was statistically

**TABLE 1** Clinical parameters at baseline, 6 months and 12 years

Time point	Parameter	CAF + ECTG (mean ± SD) (n = 13)	CAF + CTG (mean ± SD) (n = 16)	CAF (mean ± SD) (n = 14)	p value
Baseline	REC (mm)	2.54 ± 0.69	2.75 ± 0.85	1.93 ± 1.14	.11
	PD (mm)	1.23 ± 0.56	1.12 ± 0.38	1.14 ± 0.36	.79
	CAL (mm)	3.78 ± 0.88	3.87 ± 0.91	3.07 ± 1.07	.09
	KTW (mm)	2.07 ± 0.67	1.18 ± 0.44	1.68 ± 0.72	.18
	GT (mm)	1.05 ± 0.29	0.9 ± 0.27	1.07 ± 0.37	.37
6 months	REC (mm)	0.11 ± 0.41	0.25 ± 0.36	0.28 ± 0.42	.51
	mRC (%)	97.11 ± 10.4	91.02 ± 14.46	89.33 ± 16.95	.34
	CRC (%)	84.61%	81.25%	71.42%	.15
	PD (mm)	1.53 ± 0.47	1.4 ± 0.49	1.11 ± 0.4	.08
	CAL (mm)	1.65 ± 0.62	1.65 ± 0.51	1.39 ± 0.71	.43
	KTW (mm)	3.84 ± 0.55	2.62 ± 0.78	2.17 ± 0.84	<b>&lt;.001</b>
	GT (mm)	2.07 ± 0.61	1.72 ± 0.29	1.25 ± 0.32	<b>&lt;.001</b>
12 years	REC (mm)	0.57 ± 0.44	0.62 ± 0.46	0.82 ± 0.63	.43
	mRC (%)	77.69 ± 18.27	74.51 ± 25.1	55.22 ± 32.64	.02
	CRC (%)	61.5%	56.25%	42.85%	.54
	PD (mm)	1.5 ± 0.57	1.43 ± 0.51	1.35 ± 0.49	.78
	CAL (mm)	2.07 ± 0.78	2.06 ± 0.79	2.17 ± 0.79	.91
	KTW (mm)	3.94 ± 0.54	3.87 ± 0.69	2.82 ± 0.66	<b>&lt;.001</b>
	GT (mm)	2.11 ± 0.61	1.62 ± 0.67	0.93 ± 0.26	<b>&lt;.001</b>

Note: Bold p values signify statistical significance; n, number of treated sites.



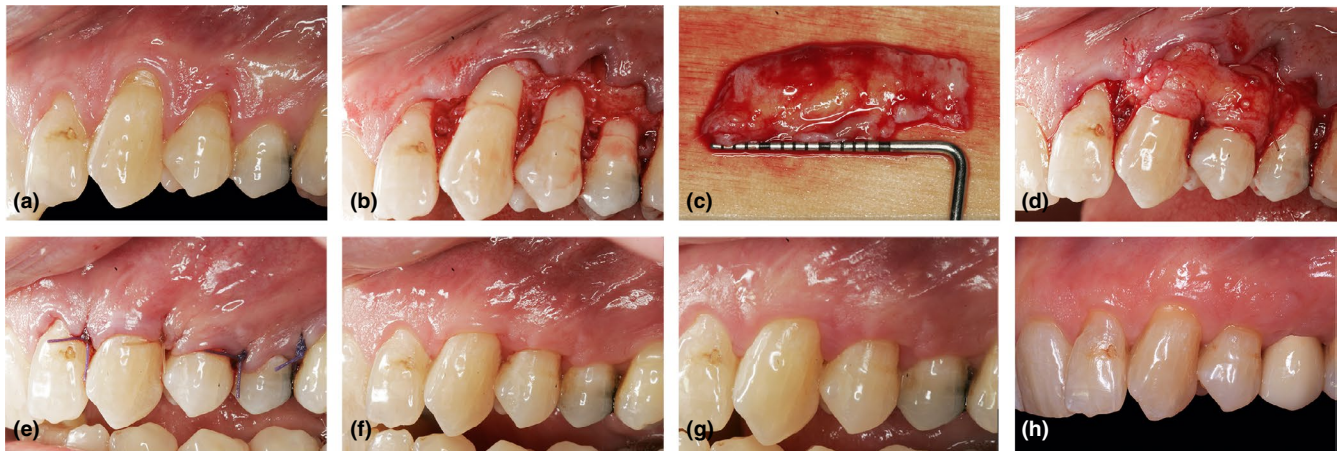
**FIGURE 2** Multiple gingival recession treatment of the maxillary lateral incisor, canine and first premolar with eCAF. An ECTG was sutured over the canine. (a) Baseline; (b) Design of the eCAF; (c) Connective tissue graft with a 2 mm band of epithelium (ECTG) before being trimmed and adapted to the recipient site; (d) Flap coronally advanced and sutured. Note that the coronal part of the ECTG (with the epithelium) was left exposed; (e) Healing at 2 weeks; (f) Healing at 3 months; (g) Healing at 6 months; (h) 12-year results

significant between the grafted (CTG and ECTG) and the non-grafted CAF areas ( $p = .03$ ).

The changes in the clinical parameters in all groups from baseline to 6 months and from 6 months to 12 years are presented in Table 2. From the 6-month evaluation to the 12-year recall, the differences in changes of mRC among the three groups were significant in the CAF-treated sites which had not received a graft (34.12% reduction), while the ECTG-treated (-4.62 (95% CI [-8.61,

-0.64],  $p = .01$ ) and CTG-treated sites (-2.85 (95% CI [-5.16, -0.53],  $p = .01$ ) presented with less changes (19.4% and 16.5% reduction, respectively). The changes in KTW from baseline to 6 months were significantly different in the ECTG-treated (1.37 (95% CI [0.65, 2.02],  $p < .001$ )) and CTG (0.98 (95% CI [0.35, 1.52],  $p = .003$ )-treated sites compared to the sites in the flap that had not received a graft. From 6 months to the 12-year recall, KTW changes in both grafted groups were statistically different from





**FIGURE 3** Multiple gingival recession treatment of the maxillary canine and first premolar with eCAF. A CTG was sutured over the canine and the first premolar. (a) Baseline; (b) Design of the eCAF; (c, d) CTG harvested from the palate (without a band of epithelium) and sutured over the canine and the first premolar; (e) Flap coronally advanced and sutured; (f) Healing at 3 months; (g) Healing at 6 months; (h) 12-year results

**TABLE 2** Changes in the clinical parameters between baseline and 6 months and 6 months and 12 years following CAF + ECTG, CAF + CTG and CAF

Parameter	Baseline – 6 months			6 months – 12 years		
	CAF	CAF + CTG	CAF + ECTG	CAF	CAF + CTG	CAF + ECTG
mRC reduction (%)	-	-	-	34.12 ± 35.13 <sup>ab,*</sup>	16.52 ± 31.8 <sup>a</sup>	19.42 ± 24.11 <sup>b,*</sup>
CRC reduction (%)	-	-	-	28.57 <sup>*</sup>	25.01 <sup>*</sup>	23.11 <sup>*</sup>
PD reduction (mm)	0.03 ± 0.57	-0.28 ± 0.51	-0.31 ± 0.72	-0.25 ± 0.64	-0.03 ± 0.64	0.03 ± 0.51
CAL reduction (mm)	1.67 ± 0.74	2.21 ± 1.06	2.11 ± 0.79	-0.78 ± 0.77 <sup>*</sup>	-0.41 ± 0.91	-0.42 ± 0.78
KTW gain (mm)	0.5 ± 1.01 <sup>ab</sup>	1.43 ± 0.81 <sup>a</sup>	1.76 ± 0.69 <sup>b</sup>	0.64 ± 0.79 <sup>ab,*</sup>	1.25 ± 0.57 <sup>ac,*</sup>	0.1 ± 0.57 <sup>bc</sup>
GT gain (mm)	0.17 ± 0.56 <sup>ab</sup>	0.82 ± 0.41 <sup>a</sup>	1.02 ± 0.63 <sup>b</sup>	-0.32 ± 0.42 <sup>*</sup>	-0.1 ± 0.72	0.03 ± 0.24

Note: Different letters indicate significant intergroup differences.

\*Denotes a significant change when compared to the previous time point in the same group.

the CAF-alone-treated sites, but not from each other ( $-0.63$  (95% CI  $[-1.12, -0.15]$ ,  $p = .01$ ), and  $0.59$  (95% CI  $[0.13, 1.06]$ ,  $p = .01$ ), for the ECTG, and CTG, respectively), and presenting the most increase in gain for the ECTG-treated sites.

For changes in GT, while no significant differences could be observed from baseline to 6 months for sites which were not treated with a graft, both ECTG-treated ( $0.9$  (95% CI  $[0.51, 1.37]$ ,  $p < .001$ ) and CTG ( $0.74$  (95% CI  $[0.51, 1.37]$ ,  $p < .001$ ))-treated sites showed a great gain despite statistical intergroup differences. However, the changes in GT from 6 months to 12 years did not show statistical differences among any of the three groups.

### 3.3 | Regression analyses

Table 3 shows the result of the regression analysis for the mean root coverage outcomes at 12 years. The regression models demonstrated that KTW at baseline and 6 months was significant

predictors affecting the mean root coverage results at 12 years for all the treated sites regardless of the utilized graft material ( $p < .05$ ), whereas, other investigated variables such as GT (at baseline or 6 months) and recession depth (at baseline or 6 months) did not seem to be significantly affecting the results ( $p > .05$ ).

### 3.4 | Patient-reported outcomes at the 12-year recall

The patient-reported outcomes demonstrated a high satisfaction rate for both the ECTG- and CTG-treated group, with VAS scores of  $8.96 \pm 1.33$  and  $9.13 \pm 1.46$ , respectively ( $p = .89$ ). Similar among both groups, 100% of patients showed a willingness for possible retreatment if needed. Additionally, when patients were asked to indicate their own perception of “stability” of their root coverage outcomes using a VAS scale, the ones who has initially inquired about the surgical procedure for aesthetic reasons were the most

Variable	Group	Estimate	St. Error	p value	95% CI
Recession depth at baseline	CAF + CTG	11.28	7.01	0.13	-2.95, 25.07
	CAF + ECTG	-2.41	7.94	0.76	-17.85, 13.02
	CAF	3.48	8.198	0.67	-12.46, 19.44
Recession depth at 6 months	CAF + CTG	19.92	18.01	0.28	-21.12, 57.49
	CAF + ECTG	16.11	12.32	0.21	-7.85, 40.07
	CAF	13.11	8.76	0.99	-4.41, 30.63
Gingival thickness at baseline	CAF + CTG	-26.72	18.34	0.11	-63.4, 9.96
	CAF + ECTG	-0.71	18.97	0.97	-37.6, 36.18
	CAF	7.42	20.52	0.77	-33.62, 48.46
Gingival thickness at 6 months	CAF + CTG	20.30	11.11	0.08	-1.92, 42.52
	CAF + ECTG	17.30	13.61	0.21	-9.92, 44.52
	CAF	5.53	10.32	0.59	-15.11, 26.17
Keratinized tissue width at baseline	CAF + CTG	24.39	10.13	<b>0.02</b>	4.13, 44.65
	CAF + ECTG	21.80	10.15	<b>0.03</b>	1.5, 42.1
	CAF	19.87	9.35	<b>0.03</b>	1.17, 38.57
Keratinized tissue width at 6 months	CAF + CTG	20.15	9.82	<b>0.03</b>	0.51, 39.79
	CAF + ECTG	14.71	7.22	<b>0.02</b>	0.27, 29.15
	CAF	18.57	8.92	<b>0.03</b>	0.73, 36.41

Note: Bold signifies statistical significance.

precise in detecting the relapse of the gingival recession at the 12-year recall, compared to patients which had had the procedure for non-aesthetic purposes (hypersensitivity, non-carious cervical lesions, etc.;  $p = .01$ ).

## 4 | DISCUSSION

### 4.1 | Connective tissue graft with or without an epithelial collar

The possibility of leaving the coronal part of a CTG exposed has been explored by several authors (Cordioli, Mortarino, Chierico, Grusovin, & Majzoub, 2001; Han, John, Blanchard, Kowolik, & Eckert, 2008; Salhi, Lecloux, Seidel, Rompen, & Lambert, 2014; Tavelli, Barootchi, Greenwell, et al., 2019). The suggested advantages of this approach are the better initial graft tissue fluid seal during the healing process, and the faster healing and increased gain in KTW (Byun et al., 2009). However, since it is clinically challenging to have the flap positioned exactly at the interface between the epithelium and connective tissue area of the graft, cyst formation remains a concern (Byun et al., 2009; Romano, Perotto, Cricenti, Gotti, & Aimetti, 2017). In addition, it has been reported that at some sites, the healing occurs with a demarcation line between the flap and the graft which would require an additional gingivoplasty procedure (Byun et al., 2009).

In the previous report, our group found a greater mRC, while lacking significant significance, in favour of the CAF + ECTG-treated sites at 6-months (compared to the CAF + CTG) and a significantly greater KTW, at 3 and 6 months, in the CAF + ECTG group (Byun et al., 2009). This 12-year examination confirmed that retaining the epithelial collar on a CTG does not add long term clinical benefits and is

**TABLE 3** Regression analysis investigating variables affecting the mean root coverage outcomes at 12 years

not related to greater outcome stability, when compared to the CTG. A possible explanation might be that both ECTG and CTG result in a similar increase in KTW and GT, which are crucial factors for the long term stability of the gingival margin. Furthermore, no significant differences were observed between ECTG and CTG in terms of the percentage of sites that showed change in their phenotype, while none of the treated sites with flap alone (without a soft tissue graft [STG]) had an increased phenotype at the 12-year recall. In addition, although it has been suggested that leaving the epithelial collar of a CTG exposed can result in reduced aesthetic outcomes than the bilaminar technique when the CTG is completely covered by the flap (Byun et al., 2009; Dodge et al., 2018), the RES outcomes at 6 months and 12 years did not show significant differences between the ECTG and CTG groups.

Lastly, despite the secondary intention healing of the palatal donor site which has been referred to as a possible drawback of harvesting an ECTG, the patient-centred outcomes showed no differences between either groups at the early follow-up and at the 12-year recall. Our results are also in line with a recent report of a systematic review and meta-analysis that evaluated the impact of partially exposed connective tissue grafts on root coverage results (Dodge et al., 2018).

### 4.2 | Long term stability of the root coverage outcomes with or without a soft tissue graft

The detrimental effect of time on the recurrence of GRs has been documented (Leknes et al., 2005; Moslemi, Mousavi Jazi, Haghghati, Morovati, & Jamali, 2011; Nickles et al., 2010; Pini Prato et al., 2011; Tavelli, Barootchi, Di Gianfilippo, et al., 2019). Despite the lack of a

clear definition of success in the literature for the long term results of root coverage procedures, several clinicians have reported the percentage of sites that maintained their complete root coverage and the amount of drop in the mRC that occurs over time (Pini Prato, Franceschi, et al., 2018; Pini Prato, Magnani, et al., 2018; Rasperini et al., 2018). Within the present study, we also investigated the behaviour of the gingival margin at the adjacent treated sites that were also included in the same flap design (eCAF) however did not receive a graft. In case of multiple adjacent GRs, the central and deeper defect(s) were randomly assigned to receive either an ECTG or a CTG, while the adjacent sites that were also included in the envelope flap did not receive a graft material. To the best of our knowledge, this is the first time that the outcomes of GRs with or without a CTG are investigated in the long term and at adjacent sites within the same flap. In line with the literature, we observed a greater apical relapse of the gingival margin at sites where a graft was not used (mRC reduction of 34.12%), compared to sites that received a graft material (whether a CTG or an ECTG, with mRC reductions of 16.52% and 19.42%, respectively). A similar drop in the mRC was also described by Pini Prato et al. in the long term for GRs that received CAF without a graft (Pini Prato, Magnani, et al., 2018). Nevertheless, in line with the results of other investigations (Francetti, Weinstein, Taschieri, & Corbella, 2018; Pini Prato, Franceschi, et al., 2018; Pini Prato, Magnani, et al., 2018; Pini-Prato et al., 2010; Rasperini et al., 2018), we also observed a lower tendency for GRs reoccurrence in the ECTG and CTG groups. Rasperini et al. reported an estimated coronal shift of 0.009 mm per year for their CAF + CTG group, while the trend for CAF alone was an apical shift of 0.017 mm per year (Rasperini et al., 2018). Similarly, Francetti et al. observed an improvement of the average REC over time following CAF + CTG, from  $0.55 \pm 0.69$  mm at 1 year to  $0.44 \pm 0.62$  at 5 years, while sites treated with CAF alone showed an average residual recession of  $1.10 \pm 0.99$  mm at 1 year which became  $1.15 \pm 1.06$  mm at 5 years (Francetti et al., 2018). The tendency for the stability or coronal migration of the gingival margin observed in some of the treated sites may be due to the maturation of the CTG that results in a modification of the biotype with greater KTW gain and soft tissue thickening (Chambrone & Pini Prato, 2018; Rasperini et al., 2018). These are key factor for the long term stability of the gingival margin (Chambrone & Pini Prato, 2018). Additionally, it can be speculated that a thicker soft tissue and increased KTW can better tolerate traumatic toothbrushing in patients not able to correct their brushing technique over time. A significantly higher gain in KTW and GT was observed in our study for grafted sites versus the non-grafted areas, which may explain the greater gingival margin stability for the CTG and ECTG groups. In line with this speculation, it has been suggested that sites with thin gingival biotype are also more prone to develop GRs (Cortellini & Bissada, 2018; Kim & Neiva, 2015; Maroso, Gaio, Rosing, & Fernandes, 2015; Scheyer et al., 2015).

#### 4.3 | Predictors for stability of the gingival margin

Several prognostic factors affecting the long term stability of root coverage procedures have been identified in the literature. According

to Pini-Prato et al., KTW <2 mm at baseline is related to higher incidence of GRs recurrence (Pini Prato, Franceschi, et al., 2018; Pini Prato, Magnani, et al., 2018). In addition, the presence of non-carious cervical lesions has also been shown to be a negative prognostic factor in maintaining the stability of the achieved outcomes (Pini Prato, Franceschi, et al., 2018; Rasperini et al., 2018). Patient maintenance and motivation over time also play a decisive role on the stability of the results achieved with the surgery (McGuire et al., 2014; Pini Prato et al., 2011; Zucchelli, Felice, et al., 2018), as the resuming of the erratic brushing technique has been shown to highly correlate with GRs recurrence (Moslemi et al., 2011). In line with the literature, our multilevel model analysis exhibited that KTW at baseline and at 6 months was significant predictors affecting the stability of the gingival margin among all of the treated sites.

#### 4.4 | Limitations

The relatively low number of patients and sites among the three groups at the 12-year recall examination may pose challenges in detecting strong statistical differences among the treatment groups. In addition, although masked and calibrated, different examiners were used for the original study and the 12-year follow-up. Moreover, despite the established adverse role of non-carious cervical lesions on the stability of results over time, they were not taken into account in the original study protocol. Additionally, studies have highlighted on the impact of tooth location on the outcomes of root coverage procedures (Chambrone & Tatakis, 2015; Zucchelli et al., 2019; Zucchelli, Tavelli, et al., 2018). Most recently, Zucchelli et al. (2019) found that tooth location played a key role in determining the amount of achievable root coverage, in that treated maxillary recession defects exhibited a significantly greater mRC and CRC than sites in the mandibular arch. While they highlighted upon the presence of certain unfavourable anatomical conditions frequently encountered in the mandibular area (i.e. marginal frenulum, shallow vestibule, a high muscle pull and flap tension) as restricting factors that may lessen the root coverage outcomes (particularly compared with their rare incidence in the maxillary region), in the original RCT, 1 maxillary site was assigned to the ECTG treatment group, whereas 7 were randomly allocated to receive the CTG (and 1 mandibular site for the ECTG group, vs. 6 in the CTG group at this 12-year recall). Therefore, we note the unequal distribution of maxillary and mandibular sites as a restricting factor which may potentially have affected the results.

### 5 | CONCLUSIONS

Within its limitations, the present investigation demonstrated that eCAF with CTG or ECTG showed similar outcomes after 12 years, maintaining the stability of the gingival margin. Adjacent sites that did not receive a graft exhibited a higher trend for an apical shift and a greater drop in the mRC than grafted sites. Keratinized tissue width at baseline and at 6 months seems to be predictors for the stability of the gingival margin.



## ACKNOWLEDGEMENTS

The authors are grateful to Prof. Giovan Paolo Pino Prato for his critical review of the manuscript. We would also like to thank Hu-Friedy (Chicago, IL, USA) for generously providing the biotype probes. None of the authors declare any potential conflict of interest with respect to the authorship and/or publication of this article.

## CONFLICT OF INTEREST

The authors do not have any financial interests, either directly or indirectly, in the products or information listed in the paper.

## ORCID

Shayan Barootchi  <https://orcid.org/0000-0002-5347-6577>

Lorenzo Tavelli  <https://orcid.org/0000-0003-4864-3964>

Riccardo Di Gianfilippo  <https://orcid.org/0000-0003-2579-9464>

Tae-Ju Oh  <https://orcid.org/0000-0003-0575-9502>

Francesco Cairo  <https://orcid.org/0000-0003-3781-1715>

Hom-Lay Wang  <https://orcid.org/0000-0003-4238-1799>

## REFERENCES

- Bates, D., Maechler, M., Bolker, B., & Walker, S. (2015). Fitting linear mixed-effects models using lme4. *Journal of Statistical Software*, 67, 1–48. <https://doi.org/10.18637/jss.v067.i01>
- Byun, H. Y., Oh, T. J., Abuhusseini, H. M., Yamashita, J., Soehren, S. E., & Wang, H. L. (2009). Significance of the epithelial collar on the subepithelial connective tissue graft. *Journal of Periodontology*, 80, 924–932. <https://doi.org/10.1902/jop.2009.080673>
- Cairo, F., Nieri, M., Cincinelli, S., Mervelt, J., & Pagliaro, U. (2011). The interproximal clinical attachment level to classify gingival recessions and predict root coverage outcomes: An explorative and reliability study. *Journal of Clinical Periodontology*, 38, 661–666. <https://doi.org/10.1111/j.1600-051X.2011.01732.x>
- Cairo, F., Rotundo, R., Miller, P. D., & Pini Prato, G. P. (2009). Root coverage esthetic score: A system to evaluate the esthetic outcome of the treatment of gingival recession through evaluation of clinical cases. *Journal of Periodontology*, 80, 705–710. <https://doi.org/10.1902/jop.2009.080565>
- Chambrone, L., & Pini Prato, G. P. (2018). Clinical insights about the evolution of root coverage procedures: The flap, the graft, and the surgery. *Journal of Periodontology*, 90(1), 9–15. <https://doi.org/10.1002/JPER.18-0281>
- Chambrone, L., Salinas Ortega, M. A., Sukekava, F., Rotundo, R., Kalemaj, Z., Buti, J., & Pini Prato, G. P. (2018). Root coverage procedures for treating localised and multiple recession-type defects. *Cochrane Database Systematic Review*, 10, CD007161. <https://doi.org/10.1002/14651858.CD007161.pub3>
- Chambrone, L., & Tatakis, D. N. (2015). Periodontal soft tissue root coverage procedures: A systematic review from the AAP Regeneration Workshop. *Journal of Periodontology*, 86, S8–S1. <https://doi.org/10.1902/jop.2015.130674>
- Chambrone, L., & Tatakis, D. N. (2016). Long-term outcomes of untreated buccal gingival recessions: A systematic review and meta-analysis. *Journal of Periodontology*, 87, 796–808. <https://doi.org/10.1902/jop.2016.150625>
- Cordioli, G., Mortarino, C., Chierico, A., Grusovin, M. G., & Majzoub, Z. (2001). Comparison of 2 techniques of subepithelial connective tissue graft in the treatment of gingival recessions. *Journal of Periodontology*, 72, 1470–1476. <https://doi.org/10.1902/jop.2001.72.11.1470>
- Cortellini, P., & Bissada, N. F. (2018). Mucogingival conditions in the natural dentition: Narrative review, case definitions, and diagnostic considerations. *Journal of Periodontology*, 89(Suppl 1), S204–S213. <https://doi.org/10.1002/JPER.16-0671>
- Cortellini, P., Buti, J., Pini Prato, G., & Tonetti, M. S. (2017). Periodontal regeneration compared with access flap surgery in human intra-bony defects 20-year follow-up of a randomized clinical trial: Tooth retention, periodontitis recurrence and costs. *Journal of Clinical Periodontology*, 44, 58–66. <https://doi.org/10.1111/jcpe.12638>
- Cortellini, P., Tonetti, M., Baldi, C., Francetti, L., Rasperini, G., Rotundo, R., ... Prato, G. P. (2009). Does placement of a connective tissue graft improve the outcomes of coronally advanced flap for coverage of single gingival recessions in upper anterior teeth? A multi-centre, randomized, double-blind, clinical trial. *Journal of Clinical Periodontology*, 36, 68–79. <https://doi.org/10.1111/j.1600-051X.2008.01346.x>
- Dodge, A., Garcia, J., Luepke, P., Lai, Y. L., Kassab, M., & Lin, G. H. (2018). The effect of partially exposed connective tissue graft on root-coverage outcomes: A systematic review and meta-analysis. *European Journal of Oral Sciences*, 126, 84–92. <https://doi.org/10.1111/eos.12401>
- Francetti, L., Weinstein, R., Taschieri, S., & Corbella, S. (2018). Coronally advanced flap with or without subepithelial connective tissue graft for the treatment of single recession: 5-year outcomes from a comparative study. *The International Journal of Periodontics and Restorative Dentistry*, 38, 819–825. <https://doi.org/10.11607/prd.3036>
- Han, J. S., John, V., Blanchard, S. B., Kowolik, M. J., & Eckert, G. J. (2008). Changes in gingival dimensions following connective tissue grafts for root coverage: Comparison of two procedures. *Journal of Periodontology*, 79, 1346–1354. <https://doi.org/10.1902/jop.2008.070472>
- Jepsen, K., Stefanini, M., Sanz, M., Zucchelli, G., & Jepsen, S. (2017). Long-term stability of root coverage by coronally advanced flap procedures. *Journal of Periodontology*, 88, 626–633. <https://doi.org/10.1902/jop.2017.160767>
- Kim, D. M., & Neiva, R. (2015). Periodontal soft tissue non-root coverage procedures: A systematic review from the AAP Regeneration Workshop. *Journal of Periodontology*, 86, S56–S72. <https://doi.org/10.1902/jop.2015.130684>
- Kuis, D., Sciran, I., Lajnert, V., Snjaric, D., Prpic, J., Pezelj-Ribaric, S., & Bosnjak, A. (2013). Coronally advanced flap alone or with connective tissue graft in the treatment of single gingival recession defects: A long-term randomized clinical trial. *Journal of Periodontology*, 84, 1576–1585. <https://doi.org/10.1902/jop.2013.120451>
- Leknes, K. N., Amarante, E. S., Price, D. E., Boe, O. E., Skavland, R. J., & Lie, T. (2005). Coronally positioned flap procedures with or without a biodegradable membrane in the treatment of human gingival recession. A 6-year follow-up study. *Journal of Clinical Periodontology*, 32, 518–529. <https://doi.org/10.1111/j.1600-051X.2005.00706.x>
- Maroso, F. B., Gaio, E. J., Rosing, C. K., & Fernandes, M. I. (2015). Correlation between gingival thickness and gingival recession in humans. *Acta Odontol Latinoam*, 28, 162–166. <https://doi.org/10.1590/S1852-48342015000200011>
- McGuire, M. K., Scheyer, E. T., & Nunn, M. (2012). Evaluation of human recession defects treated with coronally advanced flaps and either enamel matrix derivative or connective tissue: Comparison of clinical parameters at 10 years. *Journal of Periodontology*, 83, 1353–1362. <https://doi.org/10.1902/jop.2012.110373>
- McGuire, M. K., Scheyer, E. T., & Snyder, M. B. (2014). Evaluation of recession defects treated with coronally advanced flaps and either

- recombinant human platelet-derived growth factor-BB plus beta-tricalcium phosphate or connective tissue: Comparison of clinical parameters at 5 years. *Journal of Periodontology*, 85, 1361–1370. <https://doi.org/10.1902/jop.2014.140006>
- Moslemi, N., Mousavi Jazi, M., Haghghati, F., Morovati, S. P., & Jamali, R. (2011). Acellular dermal matrix allograft versus subepithelial connective tissue graft in treatment of gingival recessions: A 5-year randomized clinical study. *Journal of Clinical Periodontology*, 38, 1122–1129. <https://doi.org/10.1111/j.1600-051X.2011.01789.x>
- Nickles, K., Ratka-Kruger, P., Neukranz, E., Raetzke, P., & Eickholz, P. (2010). Ten-year results after connective tissue grafts and guided tissue regeneration for root coverage. *Journal of Periodontology*, 81, 827–836. <https://doi.org/10.1902/jop.2010.090632>
- Pini Prato, G. P., Franceschi, D., Cortellini, P., & Chambrone, L. (2018). Long-term evaluation (20 years) of the outcomes of subepithelial connective tissue graft plus coronally advanced flap in the treatment of maxillary single recession-type defects. *Journal of Periodontology*, 89, 1290–1299. <https://doi.org/10.1002/JPER.17-0619>
- Pini Prato, G. P., Magnani, C., & Chambrone, L. (2018). Long-term evaluation (20 years) of the outcomes of coronally advanced flap in the treatment of single recession-type defects. *Journal of Periodontology*, 89, 265–274. <https://doi.org/10.1002/JPER.17-0379>
- Pini Prato, G., Rotundo, R., Franceschi, D., Cairo, F., Cortellini, P., & Nieri, M. (2011). Fourteen-year outcomes of coronally advanced flap for root coverage: Follow-up from a randomized trial. *Journal of Clinical Periodontology*, 38, 715–720. <https://doi.org/10.1111/j.1600-051X.2011.01744.x>
- Pini-Prato, G. P., Cairo, F., Nieri, M., Franceschi, D., Rotundo, R., & Cortellini, P. (2010). Coronally advanced flap versus connective tissue graft in the treatment of multiple gingival recessions: A split-mouth study with a 5-year follow-up. *Journal of Clinical Periodontology*, 37, 644–650. <https://doi.org/10.1111/j.1600-051X.2010.01559.x>
- Pini-Prato, G., Franceschi, D., Rotundo, R., Cairo, F., Cortellini, P., & Nieri, M. (2012). Long-term 8-year outcomes of coronally advanced flap for root coverage. *Journal of Periodontology*, 83, 590–594. <https://doi.org/10.1902/jop.2011.110410>
- Rasperini, G., Acunzo, R., Cannalire, P., & Farronato, G. (2015). Influence of periodontal biotype on root surface exposure during orthodontic treatment: A preliminary study. *The International Journal of Periodontics and Restorative Dentistry*, 35, 665–675. <https://doi.org/10.11607/prd.2239>
- Rasperini, G., Acunzo, R., Pellegrini, G., Pagni, G., Tonetti, M., Pini Prato, G. P., & Cortellini, P. (2018). Predictor factors for long-term outcomes stability of coronally advanced flap with or without connective tissue graft in the treatment of single maxillary gingival recessions: 9 years results of a randomized controlled clinical trial. *Journal of Clinical Periodontology*, 45, 1107–1117. <https://doi.org/10.1111/jcpe.12932>
- Romano, F., Perotto, S., Cricenti, L., Gotti, S., & Aimetti, M. (2017). Epithelial inclusions following a bilaminar root coverage procedure with a subepithelial connective tissue graft: A histologic and clinical study. *The International Journal of Periodontics and Restorative Dentistry*, 37, e245–e252. <https://doi.org/10.11607/prd.3189>
- Salhi, L., Lecloux, G., Seidel, L., Rompen, E., & Lambert, F. (2014). Coronally advanced flap versus the pouch technique combined with a connective tissue graft to treat Miller's class I gingival recession: A randomized controlled trial. *Journal of Clinical Periodontology*, 41, 387–395. <https://doi.org/10.1111/jcpe.12207>
- Scheyer, E. T., Sanz, M., Dibart, S., Greenwell, H., John, V., Kim, D. M., ... Rasperini, G. (2015). Periodontal soft tissue non-root coverage procedures: A consensus report from the AAP Regeneration Workshop. *Journal of Periodontology*, 86, S73–76. <https://doi.org/10.1902/jop.2015.140377>
- Tavelli, L., Barootchi, S., Di Gianfilippo, R., Modarressi, M., Cairo, F., Rasperini, G., & Wang, H. L. (2019). Acellular dermal matrix and coronally advanced flap or tunnel technique in the treatment of multiple adjacent gingival recessions. A 12-year follow-up from a randomized clinical trial. *Journal of Clinical Periodontology*, <https://doi.org/10.1111/jcpe.13163>
- Tavelli, L., Barootchi, S., Greenwell, H., & Wang, H. L. (2019). Is a soft tissue graft harvested from the maxillary tuberosity-The approach of choice in an isolated site? *Journal of Periodontology*, <https://doi.org/10.1002/JPER.18-0615>
- Tonetti, M. S., Fourmousis, I., Suvan, J., Cortellini, P., Bragger, U., Lang, N. P. & European Research Group on Periodontology (ERGOPERIO) (2004). Healing, post-operative morbidity and patient perception of outcomes following regenerative therapy of deep intrabony defects. *Journal of Clinical Periodontology*, 31, 1092–1098. <https://doi.org/10.1111/j.1600-051X.2004.00615.x>
- Wickham, H., Francois, R., Henry, L., & Müller, K. (2017). *dplyr: A Grammar of Data Manipulation*. R package version 0.7.4.
- Zucchelli, G., Felice, P., Mazzotti, C., Marzadori, M., Mounssif, I., Monaco, C., & Stefanini, M. (2018). 5-year outcomes after coverage of soft tissue dehiscence around single implants: A prospective cohort study. *European Journal of Oral Implantology*, 11, 215–224.
- Zucchelli, G., Mounssif, I., Mazzotti, C., Stefanini, M., Marzadori, M., Petracci, E., & Montebugnoli, L. (2014). Coronally advanced flap with and without connective tissue graft for the treatment of multiple gingival recessions: A comparative short- and long-term controlled randomized clinical trial. *Journal of Clinical Periodontology*, 41, 396–403. <https://doi.org/10.1111/jcpe.12224>
- Zucchelli, G., Tavelli, L., Barootchi, S., Stefanini, M., Rasperini, G., Valles, C., ... Wang, H. L. (2019). The influence of tooth location on the outcomes of multiple adjacent gingival recessions treated with coronally advanced flap: A multicenter Re-Analysis study. *Journal of Periodontology*. <https://doi.org/10.1002/JPER.18-0732>. [Epub ahead of print].
- Zucchelli, G., Tavelli, L., Ravidà, A., Stefanini, M., Suarez-Lopez Del Amo, F., & Wang, H. L. (2018). Influence of tooth location on coronally advanced flap procedures for root coverage. *Journal of Periodontology*, 89, 1428–1441. <https://doi.org/10.1002/JPER.18-0201>

**How to cite this article:** Barootchi S, Tavelli L, Di Gianfilippo R, et al. Long term assessment of root coverage stability using connective tissue graft with or without an epithelial collar for gingival recession treatment. A 12-year follow-up from a randomized clinical trial. *J Clin Periodontol*. 2019;46: 1124–1133. <https://doi.org/10.1111/jcpe.13187>