

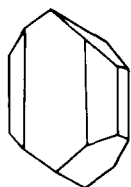
Petrology of a margarite-bearing meta-anorthosite from Seljeneset, Nordfjord, western Norway: Implications for the P - T history of the Western Gneiss Region during Caledonian uplift

SPENCER J. COTKIN¹*, JOHN W. VALLEY¹ and ERIC J. ESSENE²

¹Department of Geology and Geophysics, University of Wisconsin, 1215 West Dayton Street, Madison, WI 53706 (U.S.A.)

²Department of Geological Sciences, University of Michigan, Ann Arbor, MI 48109 (U.S.A.)

LITHOS



Cotkin, S.J., Valley, J.W. and Essene, E.J., 1988. Petrology of a margarite-bearing meta-anorthosite from Seljeneset, Nordfjord, western Norway: Implications for the P - T history of the Western Gneiss Region during Caledonian uplift. *Lithos*, 21: 117–128.

The Western Gneiss Region of Norway contains relics of eclogite and high-pressure granulite that have been extensively overprinted by amphibolite-facies assemblages. A meta-anorthosite from Seljeneset, Nordfjord, contains fine-grained margarite + quartz + plagioclase \pm muscovite clots set in a zoisite + quartz + plagioclase \pm clinozoisite matrix. In some clots relict kyanite is preserved. Equilibria modeled in the CASH system indicate a retrograde P - T path that begins in the kyanite + zoisite field ($P > 8.2$ kbar), passes through reaction (1), kyanite + zoisite + quartz \rightleftharpoons anorthite + H₂O, between 610°C and about 800°C, and finally through reaction (2), kyanite + anorthite + H₂O \rightleftharpoons margarite + quartz. The sodic composition of plagioclase in reaction (1) suggests that pressures in excess of 15–17 kbar (at 750–800°C) may have been experienced during Silurian eclogite-facies metamorphism. The simplified CASH reaction (2) occurs between invariant points at 4.3 kbar, 520°C and 8.2 kbar, 610°C, but polyvariance, due to variable Na solid solution, broadens the reaction into a band about 150°C wide. Cooling through 500°C occurred about 410 Ma ago. This study provides the first well-defined P - T path for Caledonian retrograde metamorphism at amphibolite-facies conditions.

(Received September 25, 1986; revised and accepted July 15, 1987)

Introduction and geologic setting

The Western Gneiss Region (WGR) of Norway is a classic area for the study of high-grade metamorphic rocks (e.g., Eskola, 1921). Relics of garnet-bearing lithologies, including eclogite, garnet peridotite and granulite, occur locally and have received considerable attention (e.g., Bryhni et al., 1977; Krogh, 1977; Lappin and Smith, 1978; Medaris, 1984; Griffin et al., 1985). Most of the WGR, however, has been extensively overprinted by amphibolite-facies assemblages (Lappin, 1966). Although numerous estimates of metamorphic pressures and temperatures have been determined for high-grade assemblages, relatively few estimates

are available for amphibolite-facies assemblages (Griffin et al., 1985). The margarite-bearing meta-anorthosite from Seljeneset, outer Nordfjord, western Norway, the subject of this paper, is one rock type that has allowed an accurate estimate of amphibolite-facies pressures and temperatures.

The Nordfjord area (Fig. 1) is underlain predominantly by quartzofeldspathic gneiss, with lesser amounts of eclogite, peridotite, anorthosite and margarite (Bryhni, 1966). The region was subjected to eclogite-facies metamorphism during the Silurian Caledonian orogeny, when the Baltic plate was overridden by the Greenland plate (Krogh, 1977; Griffin and Brueckner, 1980; Cuthbert et al., 1983). In part, evidence for the Silurian age for the high-grade metamorphic event comes from Sm-Nd dates from garnet-clinopyroxene pairs from eclogites of about 425 Ma (Griffin and Brueckner,

*Present address: Division of Geological and Planetary Sciences, California Institute of Technology, Pasadena, CA 91125, U.S.A.

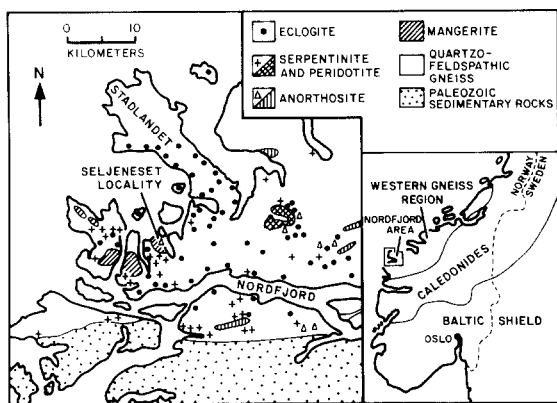


Fig. 1. Generalized geologic map of the Nordfjord area. Simplified after Bryhni (1966).

1980). The age of retrograde metamorphism has been studied by Lux (1985) in the vicinity of Seljeneset and also to the north in the Stadlandet area (Fig. 1) by K-Ar and $^{40}\text{Ar}/^{39}\text{Ar}$ techniques. He concluded that cooling through 500°C (approximately the temperature of concern in this study) occurred about 410 Ma ago, shortly after eclogite formation. A Svecofennian age of 1760 ± 70 Ma was derived for the protolith of the quartzo-feldspathic gneiss in the Stadlandet area by Rb-Sr (whole rock; Lappin et al., 1979). Lappin et al. (1979) also obtained a U-Pb age on zircon of 1520 ± 10 Ma from margarite spatially related to the meta-anorthosite, which they interpreted as a crystallization age of the margarite. The intrusion age of the anorthosite is unknown.

Rocks of the Seljeneset locality were first described by Eskola (1921). Meta-anorthosite consists of pink ellipsoidal margarite-bearing clots set in a white well-foliated zoisite-rich matrix. The long dimension of the clots defines a lineation. Eskola noted lenses and boudins of eclogite intricately associated with meta-anorthosite and assumed a primary relationship between the two lithologies.

In 1981 the senior author collected a sample of the margarite-bearing meta-anorthosite and in 1984 obtained four additional samples from Professor W.L. Griffin of Oslo. During subsequent examination, kyanite was identified within several of the clots, and it became apparent that useful pressure-temperature (P - T) information could be derived from a detailed study. In this paper we report the results of a petrographic and microprobe study of the available samples.

Petrography

Margarite-bearing clots are fine-grained, 1–5 cm in diameter, and contain subequal amounts of margarite, quartz, plagioclase and muscovite. These phases are invariably less than $100\ \mu\text{m}$ in diameter, and are commonly much finer-grained. Fibrous to platy, randomly oriented phyllosilicates are generally 2 – $10\ \mu\text{m}$ in thickness. Quartz and plagioclase are granoblastic. Several of the clots contain large skeletal grains of kyanite (Fig. 2a), equal in dimension to entire clots. Within each clot kyanite grains are optically continuous and show sharp uniform extinction under crossed nicols, indicating that kyanite is not strained. The following assemblages have been defined on the basis of touching grains. In clots the predominant assemblages are margarite + quartz + plagioclase \pm muscovite (Fig. 2b) and margarite + quartz + kyanite \pm muscovite (Fig. 2c). Kyanite and plagioclase were rarely observed coexisting and are generally separated by a thin selvage of margarite (Fig. 2d). In a few places, however, the assemblage margarite + quartz + kyanite + plagioclase \pm muscovite was observed (Fig. 2e). Even less common is the assemblage kyanite + plagioclase + quartz. These textures lead to the important conclusion that kyanite has reacted with plagioclase to produce margarite.

In contrast with the complicated textures in the clots, the matrix displays relatively simple textures, suggesting a close approach to equilibrium during retrogradation. Layering in the matrix, defined by differing proportions of constituent phases, imparts a strong planar fabric to the rocks. Strongly aligned, euhedral to subhedral zoisite, 0.1–0.5 mm in length, is the most abundant phase in the matrix, generally constituting 50–95% by mode (Fig. 2a). Lesser amounts of quartz, plagioclase, and commonly clinzoisite are also present. The modal ratio zoisite/(zoisite + clinzoisite) varies from 0.9 to 1.0. Minor to trace brown biotite, green hornblende, muscovite, chlorite, rutile (rimmed by sphene), or apatite also occur locally in the matrix, but are generally restricted to thin layers. With the exception of the sphene rims on rutile all textures are consistent with a single final re-equilibration in the matrix, presumably during the amphibolite-facies portion of uplift. The most common assemblage in the matrix is zoisite + quartz + plagioclase \pm clinzoisite. Other assemblages in the matrix are

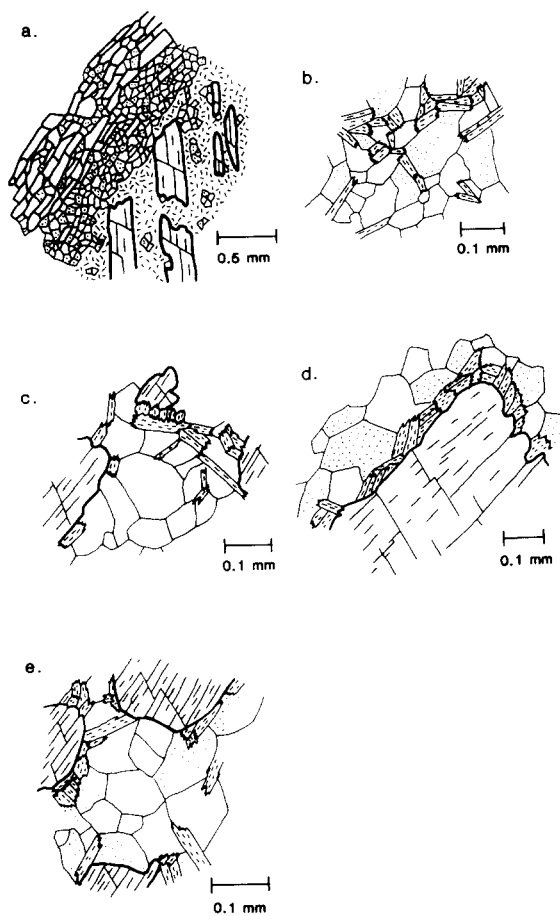


Fig. 2. Sketches of typical textures in margarite-bearing meta-anorthosite.

a. Relationship between clots (lower right) and matrix (upper left), separated by a quartz-plagioclase reaction rim. High-relief minerals are zoisite (no cleavage) and kyanite (with cleavage). Low-relief polygonal grains are plagioclase (stippled) and quartz (no pattern). Randomly oriented dashes represent fine-grained margarite. Within clots, islands of relict optically-continuous kyanite reside in a margarite+quartz+plagioclase matrix. The reaction rim suggests that kyanite and zoisite reacted to form plagioclase [i.e. reaction (1)]. Sample 328.

b. Assemblage margarite + quartz + plagioclase in a clot from sample 328.

c. Assemblage margarite + quartz + kyanite in a clot from sample N-5-3.

d. Margarite selvages separating kyanite and plagioclase in a clot from sample N-5-3. This texture indicates that reaction (2) occurred in a retrograde direction.

e. Assemblage margarite + quartz + plagioclase + kyanite in a clot from sample N-5-3.

Note: the grain size of margarite has been exaggerated for clarity.

quartz + plagioclase \pm hornblende \pm biotite \pm muscovite and quartz + plagioclase + sphene.

A zone, 0.5–1.0 mm in width, consisting primarily of quartz and plagioclase, generally occurs between clots and matrix (Fig. 2a). These zones also contain minor and variable amounts of muscovite, biotite, amphibole and chlorite. Rutile rimmed by ilmenite was observed in one place.

Mineral chemistry

Analytical techniques

Constituent minerals were analyzed by a nine-channel ARL-SEMQ electron microprobe at the University of Wisconsin. An operating voltage of 15 kV, a sample current of about 15 nA, and a counting time of 30 s were used for zoisite, clinozoisite, margarite, plagioclase and amphibole. For muscovite and biotite a sample current of 10 nA and a 5 s counting time was employed. A beam spot of approximately $2 \mu\text{m}$ was used for all phases. Well-analyzed natural silicates were used as standards. Corrections were made by the methods of Bence and Albee (1968) using the α -factors of Albee and Ray (1970). Analyses of zoisite and clinozoisite represent averages of three points. Many of the analyses of margarite, plagioclase and amphibole are single-point analyses due to the extremely fine-grained size of these phases. For muscovite and biotite two to seven points were averaged for each analysis and are thus considered semi-quantitative.

Representative grains of margarite, muscovite, amphibole, zoisite and clinozoisite from sample N-5-3 were analyzed for fluorine. For all grains F was below detectable limits of 0.03 wt.%.

Iron is reported as total Fe, except for zoisite and clinozoisite, where Fe is assumed to be Fe^{3+} , and for amphibole, where $\text{Fe}^{2+}/\text{Fe}^{3+}$ was calculated from charge-balance considerations.

Margarite

Margarite displays a wide degree of solid solution toward paragonite (Table 1), with $\text{Ca}/(\text{Ca}+\text{Na})$ ranging from 0.64 to 0.84 (Fig. 3). Minor solid solution toward muscovite is present, with K_2O varying from below detectable limits to 0.57 wt.%. Minor

TABLE 1

Representative analyses of margarite, muscovite and biotite

Sample	Margarite				Muscovite		Biotite
	328	WLG-1A			328	N-5-3	328
	1AA	2E	3D	2C	3J ^m	3C ^c	3H
SiO ₂	33.06	32.03	33.11	30.61	45.73	45.46	35.34
Al ₂ O ₃	49.58	50.51	51.02	51.39	32.80	34.59	19.85
TiO ₂	b.d.	n.a.	n.a.	n.a.	0.54	0.40	2.06
FeO	1.08	1.03	0.76	0.82	2.53	2.35	12.73
MgO	0.19	0.44	0.26	0.38	2.18	1.46	14.37
MnO	b.d.	n.a.	n.a.	n.a.	b.d.	b.d.	b.d.
CaO	9.06	9.43	9.85	11.60	b.d.	b.d.	b.d.
Na ₂ O	2.61	2.38	1.68	1.22	0.14	0.79	0.07
K ₂ O	0.10	b.d.	0.30	b.d.	12.22	10.94	10.87
Total	95.68	95.82	96.98	96.02	96.14	95.99	95.29
Si	2.173	2.105	2.145	2.017	3.076	3.039	2.628
Al ^{IV}	1.827	1.895	1.855	1.983	0.924	0.961	1.372
Al ^{VI}	2.014	2.029	2.040	2.008	1.676	1.764	0.367
Ti	—	—	—	—	0.027	0.020	0.115
Fe	0.060	0.057	0.041	0.045	0.142	0.131	0.791
Mg	0.018	0.043	0.025	0.037	0.219	0.145	1.593
Mn	—	—	—	—	—	—	—
Ca	0.638	0.664	0.684	0.819	—	—	—
Na	0.333	0.303	0.211	0.153	0.018	0.102	0.010
K	0.008	—	0.025	—	1.049	0.932	1.031
A ₁₇₋₈₆	0.652	0.687	0.743	0.843	—	—	—
A ₈₆	0.340	0.313	0.229	0.157	0.017	0.099	0.010
A _K	0.008	—	0.027	—	0.983	0.901	0.990

b.d. = below detection limit; n.a. = not analyzed; m = matrix; c = clot. Micas arbitrarily normalized to 11 oxygens on an anhydrous basis.

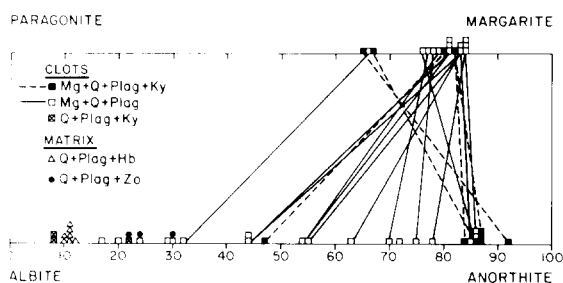


Fig. 3. Plagioclase and margarite compositions. Tie-lines connect coexisting grains. Mg = margarite; Q = quartz; Ky = kyanite; Hb = hornblende; Zo = zoisite.

amounts of FeO and MgO are also present (0.74–1.18 and 0.19–0.62 wt.%, respectively).

Muscovite

Muscovite does not deviate greatly from its ideal formula, although grains from clots and matrix can

be distinguished (Table 1). Muscovite from clots contains 3.00 to 3.20 Si per formula unit and has 6–12 mole% paragonite component. Muscovite from the matrix contains 3.06 to 3.21 Si per formula unit and has 1–3 mole% paragonite component. No solid solution toward margarite was detected.

Biotite

Biotite is peraluminous (Table 1), containing 1.26–1.46 Al^{IV} per formula unit. The Fe/(Fe + Mg) ranges from 0.33 to 0.36, close to the Fe/(Fe + Mg) = 0.333 that is commonly used to separate biotite from phlogopite.

Plagioclase

Plagioclase from clots displays a wide spectrum of compositions (Table 2; Fig. 3). Plagioclase coexisting with quartz + margarite is An_{17–86}, that co-

TABLE 2

Representative analyses of plagioclase

Sample	Clots					Matrix		
	WLG-1A		328			N-5-3		
	ID	1H	1A	3HH	1B	3G	1D	4D
SiO ₂	50.13	53.73	60.70	46.29	67.26	65.22	58.80	62.60
Al ₂ O ₃	32.51	29.17	24.26	34.72	20.13	22.15	26.76	23.99
FeO	0.13	0.14	0.13	0.15	0.11	0.23	0.14	0.15
MgO	b.d.	b.d.	b.d.	b.d.	b.d.	b.d.	b.d.	b.d.
CaO	14.07	11.07	6.49	17.56	1.83	2.44	7.63	4.54
Na ₂ O	3.41	5.27	8.37	1.49	10.93	10.38	7.23	8.86
K ₂ O	b.d.	b.d.	b.d.	b.d.	b.d.	b.d.	b.d.	b.d.
Total	100.25	99.38	99.95	100.21	100.26	100.42	100.56	100.14
Si	2.276	2.440	2.706	2.124	2.944	2.859	2.610	2.763
Al	1.739	1.562	1.274	1.878	1.038	1.144	1.400	1.248
Fe	0.005	0.005	0.005	0.006	0.004	0.008	0.005	0.006
Mg	—	—	—	—	—	—	—	—
Ca	0.684	0.539	0.310	0.863	0.086	0.114	0.360	0.215
Na	0.300	0.464	0.723	0.133	0.928	0.882	0.622	0.758
K	—	—	—	—	—	—	—	—
An	70	55	30	87	8	12	37	22
Coexisting phases	Q+M	Q+M	Q+M	Q+M+K	Q+K	Q+H	Q+Z+S	Q+Z

Q=quartz; M=margarite; K=kyanite; H=hornblende; Z=zoisite; S=sphene; b.d.=below detection limit. Formulae normalized to 8 oxygens.

existing with quartz + margarite + kyanite is mostly An₈₄₋₉₂, and that coexisting with kyanite + quartz is sodic (An₈₋₂₂). In the matrix, plagioclase coexisting with zoisite + quartz is An₂₂₋₃₀, whereas that coexisting with hornblende + quartz is An₁₀₋₁₂.

Zoisite and clinozoisite

Fourteen pairs of coexisting zoisite and clinozoisite are shown in Fig. 4 and representative analyses are given in Table 3. Zoisite varies from Ps_{4.2-4.8} (with one grain of Ps_{6.4}) and clinozoisite from Ps_{13.2-16.9}.

Amphibole

Eleven very fine-grained amphiboles from a 1.0 mm thick layer, composed of amphibole, plagioclase (An₁₀₋₁₂) and quartz, were analyzed. All amphiboles are calcic and have similar Mg/(Mg+Fe) of 0.63–0.76. However, based on the Si content and (Na+K) in the A site, two populations of amphibole were defined. The first group contains 6.2–6.4 Si and 0.54–0.69 (Na+K)_A per formula unit. These

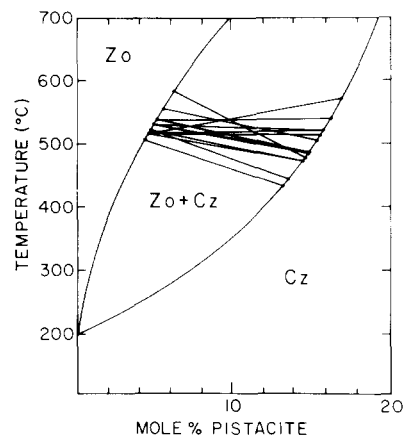


Fig. 4. Composition of coexisting zoisite and clinozoisite. The two-phase zoisite (Zo) + clinozoisite (Cz) field is from Prunier and Hewitt (1985). Pistacite = Fe³⁺/(Fe³⁺ + Al).

are pargasitic hornblende, ferroan pargasitic hornblende, and ferroan pargasite, according to the classification of Leake (1978). The second group contains 6.7–7.0 Si and 0.32–0.46 (Na+K)_A per formula unit, and are magnesio-hornblende accord-

TABLE 3

Representative analyses of coexisting zoisite-clinozoisite pairs

Sample	328		328		N-5-3	
	3B	3A	6F	6E	4A	4C
SiO ₂	39.07	38.30	38.83	38.24	38.48	37.00
Al ₂ O ₃	30.64	25.91	30.53	26.74	32.60	28.49
Fe ₂ O ₃	2.27	7.69	2.22	7.11	2.29	6.94
CaO	25.04	24.89	24.88	24.65	24.56	24.43
Total	97.02	96.77	96.46	96.74	97.93	96.86
Si	3.036	3.090	3.034	3.072	2.956	2.968
Al	2.806	2.464	2.811	2.531	2.952	2.694
Fe ³⁺	0.132	0.466	0.130	0.430	0.132	0.418
Ca	2.084	2.152	2.082	2.121	2.022	2.100
Mole% Ps	4.5	15.9	4.4	14.5	4.4	13.6

Ti, Mg, Mn, Na and K were analyzed but were not detected at the 0.05 wt.% level. Formulae normalized to 12.5 oxygens.

ing to Leake (1978). Representative analyses are given in Table 4.

TABLE 4

Representative analyses of hornblende

Sample	N-5-3	
	3F2	3F1
SiO ₂	42.94	47.31
Al ₂ O ₃	12.57	7.62
TiO ₂	0.64	0.79
FeO	15.30	12.35
MgO	11.09	14.09
MnO	b.d.	b.d.
CaO	12.00	12.39
Na ₂ O	1.53	0.87
K ₂ O	1.14	0.59
Total	97.21	96.01
Si	6.376	6.972
Al ^{IV}	1.624	1.028
Al ^{VI}	0.575	0.295
Ti	0.070	0.086
Fe ³⁺	0.432	0.292
Fe ²⁺	1.468	1.231
Mg	2.455	3.095
Mn	—	—
Ca	1.910	1.956
Na ^{IV}	0.090	0.044
Na ^{VI}	0.350	0.204
K	0.217	0.111

b.d. = below detection limits. Formulae calculated by summing Si + Al + Ti + Fe + Mg to 13 and Fe³⁺ was calculated to maintain charge balance.

Petrogenesis

Interpretation of textures

The textures described above suggest that in the early part of the Caledonian history of these rocks, porphyroblasts of kyanite resided in a zoisite + (minor) quartz matrix. Reaction between kyanite and zoisite produced the plagioclase + quartz rims that surround clots. Subsequently, kyanite and plagioclase reacted in the clots to form margarite. The margarite clots are therefore interpreted as pseudomorphs after porphyroblastic kyanite.

The well-developed foliation and lineation were evidently produced during the early part of the Caledonian history, probably during eclogite-facies metamorphism. The event that produced the clots apparently was not accompanied by significant deformation, as evidenced by strain-free kyanite.

Evaluation of equilibria in the system CASH

Phase equilibria of the meta-anorthosite may be modeled in the system CaO-Al₂O₃-SiO₂-H₂O (CASH). A portion of the petrogenetic grid of Perkins et al. (1980) is shown in Fig. 5. Chatterjee et al. (1984) have also published a petrogenetic grid for the CASH system. However, the placement by Chatterjee et al. of invariant points (IP's) I and II, which are important in the present study, is not consistent with the experimental determinations of

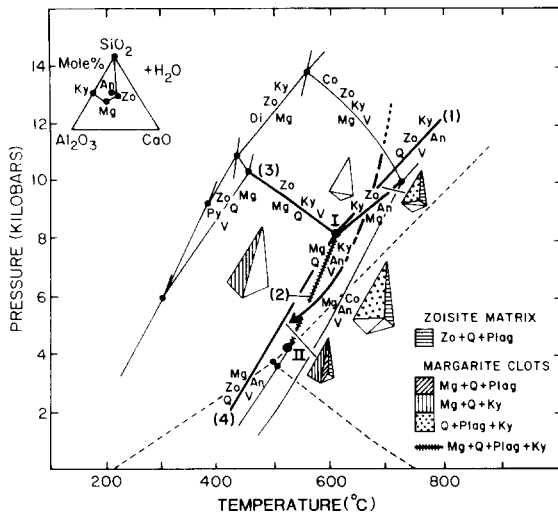
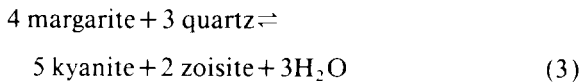
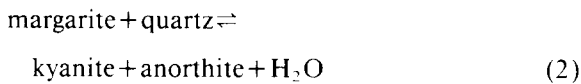
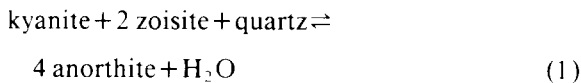


Fig. 5. Petrogenetic grid for a portion of the CASH system, after Perkins et al. (1980). Observed assemblages are indicated in the lower right. The arrow represents the proposed P - T path, and is drawn as a dotted, dashed and solid curve as there is increasing certainty of its placement with decreasing P and T . The light dashed lines are the aluminum silicate phase diagram of Holdaway (1971). An = anorthite; Co = corundum; Di = diasporite; Ky = kyanite; Mg = margarite; Py = pyrophyllite; Q = quartz; V = vapor = H_2O ; Zo = zoisite. I, II = invariant points discussed in text.

the reactions that emanate from the IP's (see below).

Invariant point I is well constrained at 8.2 kbar, 610°C by the experimentally reversed reactions:

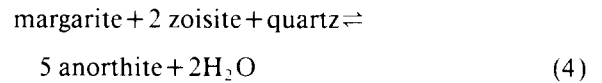


Reaction (1) was reversed by Goldsmith (1981), reaction (2) by Nitsch et al. (1981) and reaction (3) by Jenkins (1985). Invariant point II is also well constrained by the intersection of reaction (2) and kyanite = sillimanite (Newton, 1966). Invariant point II occurs at 4.3 kbar, 520°C.

If kyanite and zoisite were once stable together, pressures in excess of 8.2 kbar are indicated (considering only equilibria in the CASH system and

without temperature information). The presence of plagioclase in the reaction rims between clots and matrix is consistent with a retrograde P - T path passing through reaction (1) between IP I and about 800°C (approximately the highest metamorphic temperature reported from the Nordfjord area; Griffin et al., 1985).

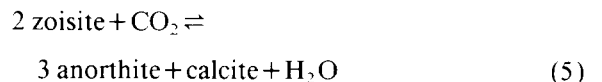
The observed assemblages and their stability fields (Fig. 5) indicate conditions of final equilibrium in the stability field of kyanite, between reaction (2) and the reaction:



The limiting four-phase assemblage, margarite + quartz + kyanite + plagioclase, is stable along reaction (2). The margarite selvages between kyanite and plagioclase strongly suggest a retrograde P - T path that passes through reaction (2), between IP's I and II, above the kyanite = sillimanite transformation. Because margarite does not coexist with zoisite there is no evidence that the P - T path pierced reaction (4), presumably because Na solid solution in plagioclase has shifted reaction (4) to lower temperature (see discussion on margarite-plagioclase equilibria).

Equilibria outside the CASH system

Constraints on fluid composition. In the above equilibria, and in the calculations that follow, it has been assumed that $P_{\text{total}} = P_{H_2O}$, i.e. X_{CO_2} is negligible. The reaction:



restricts the assemblage zoisite + plagioclase to H_2O -rich conditions. The location in T - X_{H_2O} space of reaction (5) is a function of mineral composition and pressure. The effects of solid solution in zoisite and plagioclase on reaction (5) may be evaluated by assuming that the activity of calcite is equal to unity. The equilibrium expression for solid phases is:

$$K_{(5)} = \frac{(\alpha_{An})^3}{(\alpha_{Zo})^2} = \frac{(X_{An})^3(\gamma_{An})^3}{(X_{Zo})^2(\gamma_{Zo})^2}$$

where α = activity; X = mole fraction; and γ = activity coefficient. For zoisite, the assumption $\alpha = X$ is made and Fe^{3+} is considered to reside in the $M3$

site only [cf. data for Fe-poor clinozoisite from Dollase (1971)], giving $X_{Zo}=0.925$ and $X_{Al}^{M3}=0.775$. (See next section for rationale for $X_{Zo}=0.925$.) For plagioclase, activity coefficients from Orville (1972) were used. For $X_{An}=0.25$, $\gamma_{An}=1.276$. The position of reaction (5) has been calculated for various combinations of X_{H_2O} and T at 6 kbar by the program EQUILI (Wall and Essene, 1972; Valley and Essene, 1980), modified to account for non-ideal mixing of fluid species (W.M. Lamb, pers. commun., 1986) by the methods of Kerrick and Jacobs (1981). These calculations show that for $T > 500^\circ\text{C}$, X_{CO_2} was less than 0.01. Thus, the approximation that $P_{fluid} = P_{H_2O}$ is reasonable.

Zoisite-plagioclase equilibria. Reaction (1) occurs at 8–12 kbar in the CASH system. By considering the effects of additional components on reaction (1), a more meaningful approximation of the pressure at which kyanite and zoisite were last in equilibrium may be made. This can be done if the composition of plagioclase and zoisite, in equilibrium with kyanite, quartz and H_2O is known. As no direct information on early mineral composition is available several assumptions need to be made. First, because plagioclase is the only Na-bearing phase in most of the matrix, it is assumed that plagioclase, in equilibrium with zoisite + quartz \pm clinozoisite, has retained its original composition [i.e. the composition that was produced by reaction (1)]. Plagioclase in the matrix varies from An_{22} to An_{30} . An intermediate value of An_{25} was used in the calculation below. Second, for a modal ratio of zoisite/(zoisite + clinozoisite) of 0.8 or greater (a condition that is met in all of the samples studied), only one epidote-group mineral occurs at temperature greater than about 600°C (see Fig. 4). A zoisite composition of $Ps_{7.5}$ (i.e. $X_{Zo}=0.925$) is used in the following calculation.

Assuming that the activities of kyanite, quartz and H_2O are equal to unity, the equilibrium expression for solid phases in reaction (1) is:

$$K_{(1)} = \frac{(\alpha_{An})^4}{(\alpha_{Zo})^2} = \frac{(X_{An})^4 (\gamma_{An})^4}{(X_{Zo})^2 (\gamma_{Zo})^2}$$

For each value of $K_{(1)}$, the reaction is shifted to lower T/P (if $K_{(1)} < 1.0$) or higher T/P ($K_{(1)} > 1.0$). The magnitude of this shift has been calculated from thermochemical data using the program EQUILI and the relation:

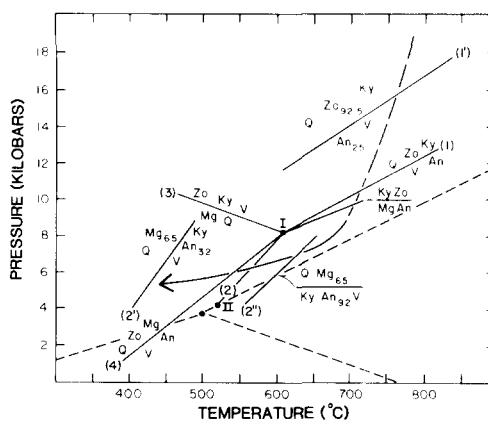


Fig. 6. Positions of reactions (1) and (2) calculated to show the effects of solid solution appropriate for samples of this study.

$$\Delta T \Delta S = RT \ln K$$

For a value of $K_{(1)} = 0.017$ the corresponding shift in the equilibrium position of reaction (1) is approximately +4 kbar or -175°C . As peak metamorphic temperatures for the Seljeneset area were approximately $750\text{--}800^\circ\text{C}$ (Griffin et al., 1985), pressures of 15–17 kbar are indicated (Fig. 6). These pressure estimates are consistent with many reported for the WGR (Griffin et al., 1985).

Margarite-plagioclase equilibria. The partitioning of Ca/Na between margarite and plagioclase (i.e. K_D) is shown in Fig. 3 and Table 5. The crossing tie lines indicate that equilibrium has not been attained or that it has been variably reset on the scale of a thin section. The diagram may also be complicated by low-temperature solvi for plagioclase and by margarite solid solutions. The tie-lines may be separated into three groups: In the first group plagioclase is more calcic than margarite (i.e. $K_D < 1.0$), in the second group K_D is approximately equal to unity, and in the third group plagioclase is more sodic than margarite ($K_D > 1.0$). There is a general correlation between K_D and mineral assemblage. With one exception, margarite and plagioclase from the four-phase assemblage, margarite + quartz + kyanite + plagioclase, have a K_D that varies from < 1.0 to near unity, whereas K_D from the three-phase assemblage, margarite + quartz + plagioclase, varies from near unity to > 1.0 .

To evaluate the effect of additional components, notably Na_2O , on reaction (2) the activity of quartz,

TABLE 5

Data for margarite-plagioclase equilibrium

No.	Sample	Plagioclase			Margarite		$K_{(2)}$
		grain	X_{An}	$\gamma_{An}^{(*)}$	grain	X_{Mg}	
1	WLG1A	1D	0.70	1.112	1E	0.77	1.01
2		1G	0.75	1.109	1F	0.78	1.07
3		1H	0.54	1.251	1I1	0.79	0.86
4		1H	0.54	1.251	1I2	0.81	0.83
5		1H	0.54	1.251	1I3	0.81	0.83
6		1J	0.44	1.276	1I2	0.81	0.69
7		1N	0.55	1.245	1M	0.83	0.82
8		1K	0.63	1.183	1M	0.83	0.90
9		1L	0.44	1.276	1M	0.83	0.68
10		2B	0.86	1.017	2C	0.84	1.04
11		3A	0.85	1.021	3C	0.84	1.03
12		3B	0.86	1.017	3D	0.74	1.18
13		3E	0.78	1.056	3G	0.84	0.98
14	328	1BB	0.32	1.276	1AA	0.65	0.63
15		1EE	0.92	1.000	1DD	0.65	1.41
16		2A	0.47	1.276	2EE	0.80	0.75
17		3CC	0.84	1.025	3BB	0.82	1.05
18		3DD	0.87	1.013	3BB	0.82	1.07
19		4CC	0.86	1.017	4AA	0.62	1.41

Pairs 1–14 are for the assemblage margarite + plagioclase + quartz. Pairs 15–20 are for the assemblage margarite + plagioclase + quartz + kyanite.

*From Orville (1972).

kyanite and H_2O are considered equal to unity, and the equilibrium constant for the solids becomes:

$$K_{(2)} = \frac{\alpha_{An}}{\alpha_{Mg}} = \frac{X_{An} \gamma_{An}}{X_{Mg} \gamma_{Mg}}$$

Equilibrium data for reaction (2) are given in Table 5. For the case that produces the largest shift to the right in Fig. 6, $X_{An}=0.92$, $\gamma_{An}=1.0$ and $X_{Mg} = Ca/(Ca + Na) = 0.65$; γ_{Mg} is assumed equal to unity. A value for $K_{(2)}$ of 1.41 is derived, shifting the equilibrium 25–50°C to higher temperatures. For the case that produces the largest shift to the left, $X_{An}=0.32$, $\gamma_{An}=1.276$, $X_{Mg}=0.65$ and $\gamma_{Mg}=1.0$. For this case $K_{(2)}$ is equal to 0.63. A shift of about 125°C to lower temperatures is indicated in Fig. 6. It should be noted that these are the extreme cases; that is, the remaining seventeen margarite-plagioclase pairs produce shifts of reaction (2) that fall between these limits, closer to the location of reaction (2) in the CASH system. These results are consistent with the study of Bucher-Nurminen et al. (1983), who found that K_D decreases with increasing temperature in margarite + plagioclase-bearing rocks from the Alps.

Zoisite-clinozoisite equilibria. Prunier and Hewitt

(1985) constructed a phase diagram for zoisite and clinozoisite with the aid of field and experimental data. Coexisting zoisite and clinozoisite pairs are plotted on their phase diagram in Fig. 4, and suggest temperatures of the order of 450–550°C, with an average of $510 \pm 35^\circ C$, where 35°C represents one standard deviation.

Amphibole-plagioclase equilibria. Spear (1980) presented an empirical geothermometer based on the $NaSi \rightleftharpoons CaAl$ exchanges in coexisting amphibole and plagioclase. Application of Spear's model to eleven amphibole-plagioclase pairs gives temperatures of 425–455°C, with an average of $440 \pm 10^\circ C$. The $\pm 10^\circ C$ precision represents one standard deviation; it does not account for uncertainties inherent in the empirical calibration.

Discussion of equilibria

As described above, the portion of the CASH system of interest to this study has been well established experimentally and thus allows the best estimate of the P - T path taken by the rocks at Seljeneset. The other equilibria that are discussed are not as well established. However, it is encouraging

that they corroborate the conclusions based on equilibria in the CASH system.

A well-constrained retrograde path for the Seljeneset rocks has been derived by combining textural observations, equilibria in the CASH system, and temperatures and pressures derived from a number of other equilibria. The anorthosite was transformed into a kyanite + zoisite + quartz rock during the Caledonian orogeny at pressures greater than 8.2 kbar, and probably in excess of 15–17 kbar. During retrograde metamorphism, kyanite porphyroblasts reacted with the zoisite + quartz matrix, via reaction (1), producing plagioclase-quartz reaction rims between 610° and 800°C. Subsequently, matrix and clots behaved as independent chemical systems.

There is no evidence that additional phases were produced in the matrix during continued cooling. Rather, a variety of continuous reactions proceeded, with different assemblages recording different temperatures, according to the specific blocking temperature of the phases involved. More specifically, zoisite-clinozoisite and amphibole-plagioclase pairs record average temperatures of $510 \pm 35^\circ$ and $440 \pm 10^\circ$ C, respectively.

In the clots, variable mineral composition, variable K_{1D} , inferred reactions and pseudomorphic textures attest to a complicated history and indicate several generations of equilibria that are interpreted as a record of retrograde metamorphism where domains less than 1.0 mm in size did not equilibrate with their surroundings. The *continuous* reaction (2) proceeded from about 650° to 450°C, as margarite and quartz were produced at the expense of kyanite and plagioclase. Where K_{1D} is approximately equal to unity this reaction resembles the *discontinuous* reaction (2) in the CASH system. Pressure is constrained to have been 4.3–8.2 kbar when the P - T path crossed reaction (2). The rare three-phase assemblage, quartz + plagioclase (An_{8-22}) + kyanite, was preserved apparently due to the sodic composition of plagioclase, which produces a large displacement of reaction (2) to lower temperatures, significantly increasing the field of stability of the assemblage.

Significance of the P - T path

Figure 7 shows the P - T path derived in this study together with a number of previously published P -

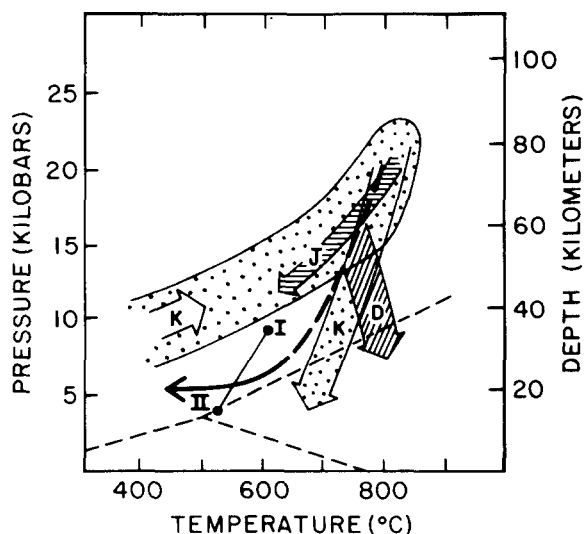


Fig. 7. P - T path derived in this study compared with previously published P - T paths for the WGR, including (K) the prograde trend of Krogh (1977), and the retrograde trends of (J) Jamtveit (1984), (K) Krogh (1977) and (D) Dunn et al. (1984). Invariant points I and II and the aluminum silicate phase diagram shown for reference.

T paths, including the prograde trend of Krogh (1977), and the retrograde trends of Krogh (1977), Dunn et al. (1984) and Jamtveit (1984). Krogh's trends were derived from eclogites from many localities in the WGR, and therefore represent an "average" P - T projectory for the WGR. The P - T trends of both Dunn et al. and of Jamtveit were derived from studies from relatively restricted areas, both on the island of Gurskøy, approximately 30 km north of Seljeneset. Thus, these results should represent P - T paths for one structural unit, and presumably they should yield similar results because they involved localities less than 5 km apart. Jamtveit's trend was derived from ultramafic rocks at Gurskebotn, whereas that of Dunn et al. was derived from mafic rocks (eclogites) at Rødskar. Although the two studies yield similar conditions at 15 kbar (700–800°C), the P - T paths diverge at lower P , with Jamtveit's path crossing into the amphibolite facies, and that of Dunn et al. passing into the granulite facies. The reason(s) for the disparity between the P - T paths is not clear. One possibility is that disequilibrium assemblages have been misinterpreted as equilibrium assemblages in one or both studies.

Medaris and Wang (1986) have recently pre-

sented a theoretically-derived retrograde P - T path for the WGR based on the tectonic model of Cuthbert et al. (1983). Boundary conditions employed by Medaris and Wang were eclogite-facies P - T estimates, Devonian exposure of the WGR, and geochronologic constraints. The path derived by Medaris and Wang passes between IP's I and II, consistent with the results of the present study.

Although complicated textural relations were encountered in this study, it is clear that the retrograde P - T path passed between IP's I and II (Figs. 5–7). As most of the WGR has been extensively retrogressed in the amphibolite facies, amphibolite-facies P - T estimates are important for a complete characterization of the WGR during the Caledonian orogeny. In previous studies that have yielded retrograde P - T information, data are available only at $T > 650^\circ\text{C}$. This study provides a well-defined constraint on the retrograde P - T path that one element of rock passed through during the Caledonian orogeny.

Acknowledgements

Funding from the Department of Geology, University of Wisconsin, allowed the senior author to visit the Seljeneset locality and to conduct the microprobe investigation. W.L. Griffin is thanked for introducing the senior author to the project and for supplying several of the samples used in the study.

References

- Albee, A.L. and Ray, L., 1970. Correction methods for electron probe microanalysis of silicates, oxides, carbonates, phosphates, and sulfates. *Anal. Chem.*, 42: 1408–1414.
- Bence, A.E. and Albee, A.L., 1968. Empirical correction factors for the electron microanalysis of silicates and oxides. *J. Geol.*, 76: 382–408.
- Bryhni, I., 1966. Reconnaissance studies of gneisses, ultrabasites, eclogites and anorthosites in outer Nordfjord, western Norway. *Nor. Geol. Unders.*, No. 241, 68 pp.
- Bryhni, I., Krogh, E.J. and Griffin, W.L., 1977. Crustal derivation of Norwegian eclogites: a review. *Neues Jahrb., Mineral. Abh.*, 130: 49–68.
- Bucher-Nurminen, K., Frank, E. and Frey, M., 1983. A model for the progressive regional metamorphism of margarite-bearing rocks in the central Alps. *Am. J. Sci.*, 283-A: 370–395.
- Chatterjee, N.D., Johannes, W. and Leistner, H., 1984. The system $\text{CaO-Al}_2\text{O}_3\text{-SiO}_2\text{-H}_2\text{O}$: new phase equilibria data, some calculated phase relations, and their petrological applications. *Contrib. Mineral. Petrol.*, 88: 1–13.
- Cuthbert, S.J., Harvey, M.A. and Carswell, D.A., 1983. A tectonic model for the metamorphic evolution of the Basal Gneiss Complex, western south Norway. *J. Metamorph. Geol.*, 1: 63–90.
- Dollase, W.A., 1971. Refinement of the crystal structure of epidote, allanite and hancockite. *Am. Mineral.*, 56: 447–464.
- Dunn, S.R., Medaris, L.G. and Wang, H.F., 1984. A thermal-tectonic model for metamorphism of basic rocks in the Caledonides of western Norway. *Geol. Soc. Am., Abstr. Prog.*, 16: 496.
- Eskola, P., 1921. On the eclogites of Norway. *Skr. Vidensk. Selsk. Christiana, Mat.-Nat. Kl.* 1, No. 8, pp. 1–118.
- Goldsmith, J.R., 1981. The join $\text{CaAl}_2\text{Si}_2\text{O}_8\text{-H}_2\text{O}$ (anorthite-water) at elevated pressures and temperatures. *Am. Mineral.*, 66: 1183–1188.
- Griffin, W.L. and Brueckner, H.K., 1980. Caledonian Sm-Nd ages and a crustal origin for Norwegian eclogites. *Nature (London)*, 285: 319–321.
- Griffin, W.L., Austrheim, H., Bradstad, K., Bryhni, I., Krill, A.G., Krogh, E.J., Mørk, M.B.E., Qvale, H. and Tørudbakken, B., 1985. High-pressure metamorphism in the Scandinavian Caledonides. In: D.J. Gee and B.A. Sturt (Editors). *The Caledonide Orogen – Scandinavia and Related Areas*. Wiley, London, pp. 783–801.
- Holdaway, M.J., 1971. Stability of andalusite and the aluminum silicate phase diagram. *Am. J. Sci.*, 271: 97–131.
- Jamtveit, B., 1984. High- P metamorphism and deformation of the Gurskebotn garnet peridotite, Sunnmøre, western Norway. *Nor. Geol. Tidsskr.*, 64: 97–110.
- Jenkins, D.M., 1985. Upper pressure stability limits on synthetic margarite plus quartz. *Contrib. Mineral. Petrol.*, 88: 332–339.
- Kerrick, D.M. and Jacobs, G.K., 1981. A modified Redlich-Kwong equation for H_2O , CO_2 and $\text{H}_2\text{O-CO}_2$ mixtures at elevated pressures and temperatures. *Am. J. Sci.*, 281: 735–767.
- Krogh, E.J., 1977. Evidence of Precambrian continent-continent collision in western Norway. *Nature (London)*, 267: 17–19.
- Lappin, M.A., 1966. The field relationships of basic and ultrabasic masses in the Basal Gneiss Complex of Stadlandet and Almklovdalen, Nordfjord, southwestern Norway. *Nor. Geol. Tidsskr.*, 46: 439–496.
- Lappin, M.A. and Smith, D.C., 1978. Mantle-equilibrated orthopyroxene eclogite pods from the basal gneisses in the Selje district, western Norway. *J. Petrol.*, 19: 530–584.
- Lappin, M.A., Pidgeon, R.T. and van Breemen, O., 1979. Geochronology of basal gneisses and mangerite syenites of Stadlandet, west Norway. *Nor. Geol. Tidsskr.*, 59: 161–181.
- Leake, B.E., 1978. Nomenclature of amphiboles. *Mineral. Mag.*, 42: 533–563.
- Lux, D.R., 1985. K/Ar ages from the Basal Gneiss Region, Stadlandet area, western Norway. *Nor. Geol. Tidsskr.*, 65: 277–286.
- Medaris, L.G., 1984. A geothermobarometric investigation of garnet peridotites in the Western Gneiss Region of Norway. *Contrib. Mineral. Petrol.*, 87: 72–86.

- Medaris, L.G. and Wang, H.F., 1986. A thermal-tectonic model for high-pressure rocks in the Basal Gneiss Complex of western Norway. In: W.L. Griffin (Editor), Second International Eclogite Conference. *Lithos*, 19: 299–315 (special issue).
- Newton, R.C., 1966. Kyanite-sillimanite equilibria at 750°C. *Science*, 151: 1222–1225.
- Nitsch, K.-H., Storre, B. and Töpfer, U., 1981. Experimentelle Bestimmung der Gleichgewichtsdaten der Reaktion $1 \text{ Margarit} + 1 \text{ Quartz} = 1 \text{ Anorthit} + 1 \text{ Andalusit} / \text{Disthen} + 1 \text{ H}_2\text{O}$. *Fortschr. Mineral.*, 59: 139–140.
- Orville, P.M., 1972. Plagioclase cation exchange equilibria with aqueous chloride solution: results at 700°C and 2000 bars in the presence of quartz. *Am. J. Sci.*, 272: 234–272.
- Perkins, D., Westrum, E.F. and Essene, E.J., 1980. The thermodynamic properties and phase relations of some minerals in the system $\text{CaO-Al}_2\text{O}_3\text{-SiO}_2\text{-H}_2\text{O}$. *Geochim. Cosmochim. Acta*, 44: 61–84.
- Prunier, A.R. and Hewitt, D.A., 1985. Experimental observations on coexisting zoisite-clinozoisite. *Am. Mineral.*, 70: 375–378.
- Spear, F.S., 1980. $\text{NaSi}=\text{CaAl}$ exchange equilibrium between plagioclase and amphibole: an empirical model. *Contrib. Mineral. Petrol.*, 72: 33–41.
- Valley, J.W. and Essene, E.J., 1980. Calc-silicate reactions in Adirondack marbles: The role of fluids and solid solution. *Geol. Soc. Am. Bull.*, 91: 114–117; 720–815.
- Wall, V.J. and Essene, E.J., 1972. Subsolidus equilibria in $\text{CaO-Al}_2\text{O}_3\text{-SiO}_2\text{-H}_2\text{O}$. *Geol. Soc. Am., Abstr. Progr.*, 4: 700.