

Letter to the Editor

The Human Bovine Arch— A Common Misnomer

TO THE EDITOR

Dr. Cho and Mukherjee should be commended on their recent elegant review of the intra- and extracranial vessels as it pertains to the carotid interventionalist [1]. We would like to highlight a common misnomer used in their review, defining the “so called bovine arch” variant in humans as the common origin of the brachiocephalic and left common carotid artery from the aorta (Fig. 1). This common human arch branching pattern is not generally found in cattle [2]. The true bovine arch has a single brachiocephalic trunk originating from the aortic arch that eventually splits into the bilateral subclavian arteries and a common “bicarotid trunk” (Fig. 2) [2,3]. This is rarely seen in humans [2]. We agree with Layton and colleagues that it

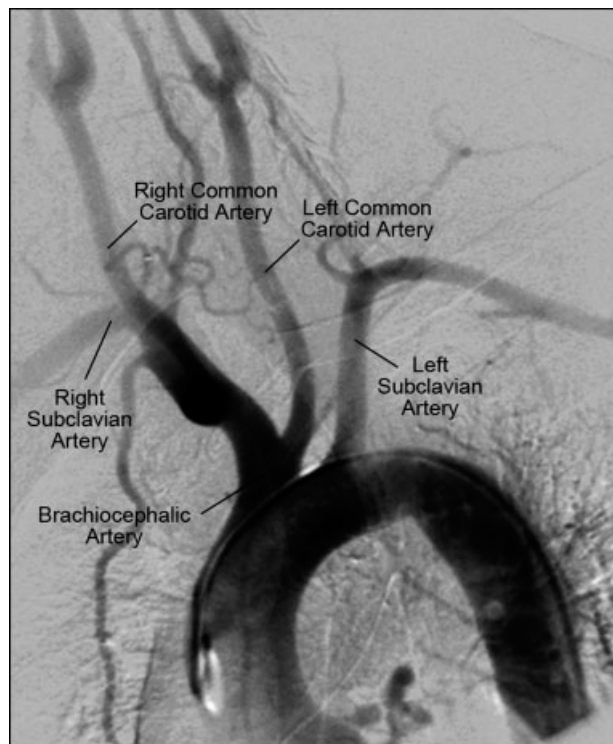


Fig. 1. Human aortic arch variant with a common origin of the brachiocephalic and left common carotid artery from the aorta.

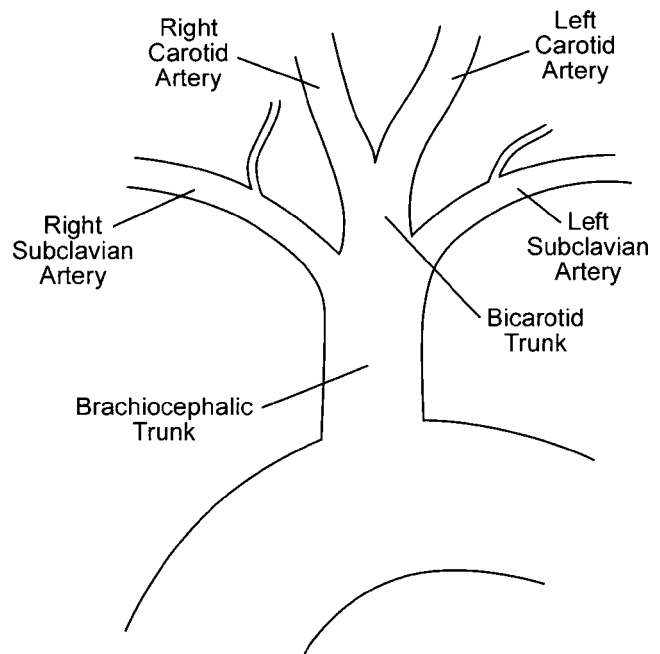


Fig. 2. Bovine aortic arch.

would be preferable to use descriptive anatomic labels and avoid the term bovine arch to avoid the possibility of miscommunication.

*Daniel M. Buerkel, MD
Hitinder S. Gurm, MD
Cardiovascular Center
University of Michigan
Ann Arbor, Michigan*

REFERENCES

1. Cho L, Mukherjee D. Basic cerebral anatomy for the carotid interventionalist: The intracranial and extracranial vessels. *Catheter Cardiovasc Interv* 2006;68:104–111.
2. Layton KF, Kallmes DF, Cloft HJ, Lindell EP, Cox VS. Bovine aortic arch variant in humans: Clarification of a common misnomer. *Am J Neuroradiol* 2006;27:1541–154.
3. Habel RE, Budras KD. Thoracic cavity. In: Budras KD, ed. *Bovine Anatomy: An Illustrated Text*. Hanover, Germany: Schlüter-sche GmbH & Co; 2003. pp 62–65.

Received 7 November 2006; Revision accepted 14 December 2006

DOI 10.1002/ccd.21086

Published online 11 April 2007 in Wiley InterScience (www.interscience.wiley.com).