

Structurally Controlled Bio-hybrid Materials Based on Unidirectional Association of Anisotropic Microparticles with Human Endothelial Cells

By Mutsumi Yoshida, Kyung-Ho Roh, Suparna Mandal, Srijanani Bhaskar, Dongwoo Lim, Himabindu Nandivada, Xiaopei Deng, and Joerg Lahann*

In recent decades, biomedical researchers have increasingly realized the importance of local interactions between synthetic materials and cells for their macroscopic functionality.^[1–3] The groundbreaking progress in the biological sciences has led to a push towards custom-tailored biomaterials with precisely designed physico-chemical properties at the nano- and microscale.^[3–5] To date, a range of different approaches towards custom-tailored biomaterials exist based on different types of materials, such as hydrogels,^[6,7] microfabricated biomaterials,^[8–11] or electrospun fiber scaffolds.^[12–19] In addition, so-called bio-hybrid materials have been proposed,^[20] where cells and synthetic building blocks form structurally and functionally integrated architectures.^[20–24] Bio-hybrid materials may have important advantages over conventional biomaterials including improved cellular integration, potentially more straightforward in vivo applicability, or the ability to effectively remodel their materials structure with time. While bio-hybrid materials have so far been realized mostly as 2D cell sheets,^[20–22] a next generation of integrated biomaterials may be contemplated, where both synthetic building blocks, such as micro- or nanoparticles, and cells become integral structural elements that ultimately form the actual biomaterial through directional self-assembly in all three dimensions.^[23–24] In fact, entirely different biomaterials may be created based on well-ordered assemblies of cells and synthetic building blocks, as long as the synthetic building blocks can be designed to undergo spatially directed association with cells. In this respect, novel nano- and microparticle designs will have to be realized that are structurally anisotropic and, at the same time, show spatially-controlled affinity towards cells. When designing synthetic building blocks for such bio-hybrid materials, not only the chemical make-up of bulk and interfaces have been appreciated as important design criteria for biomaterials but also

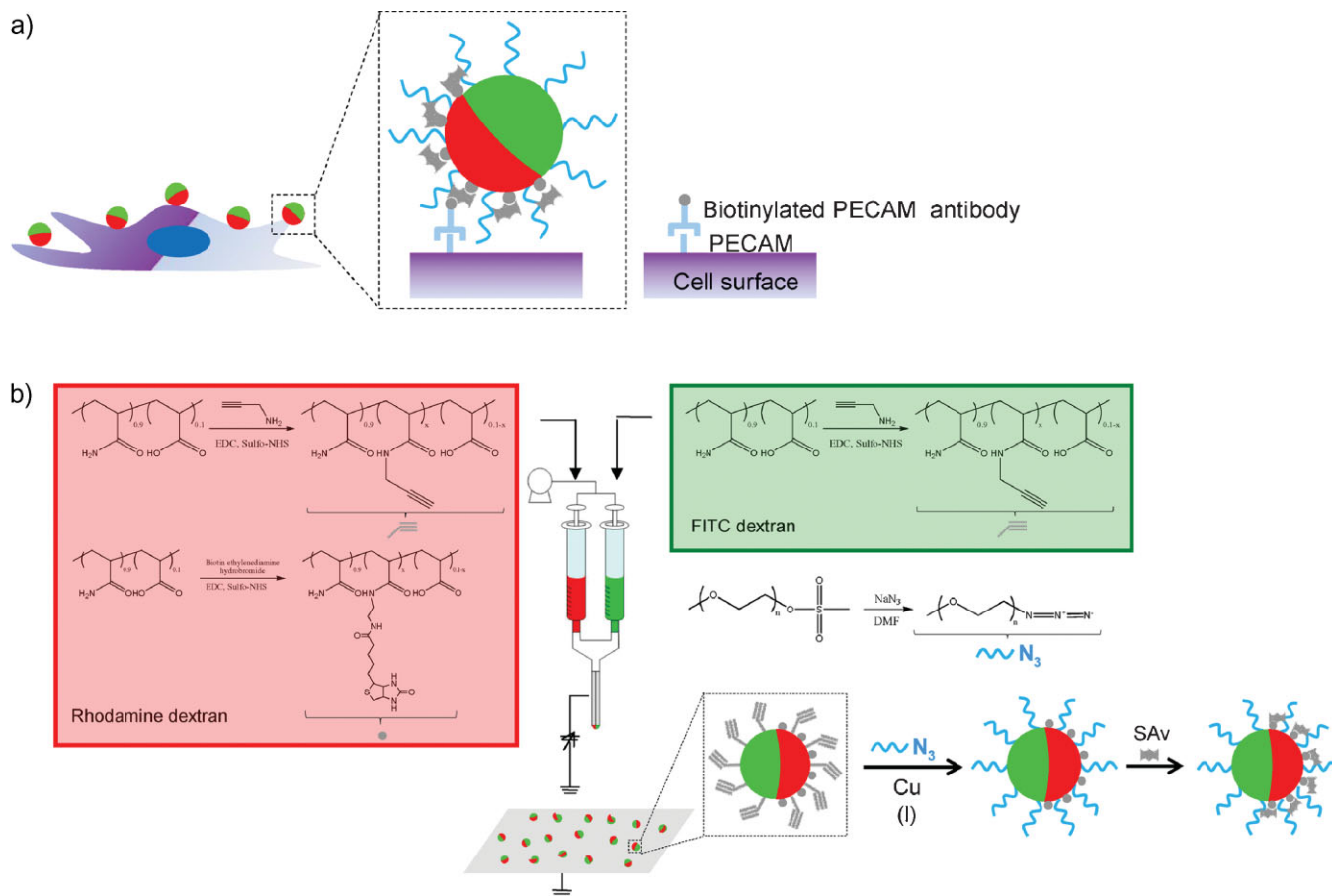
physical properties, such as microstructure, anisotropic particle architecture, or shape.^[3] While the potential of sophisticated bio-hybrid materials may be vast, with applications in areas ranging from novel actuators to tissue engineering and medical imaging, actual implementation has often been impeded by the lack of appropriate synthetic routes towards anisotropic building blocks. Only recently, a range of synthetic concepts has been developed for the fabrication of anisotropic particles,^[25] including microfluidic technologies,^[26–30] microfabrication,^[31] continuous-flow polymerization,^[32] self-assembly,^[33] or electrohydrodynamic co-jetting.^[34–39]

Herein, we report initial work towards a novel type of microstructured bio-hybrid material comprised of anisotropic polymer particles with spatially-controlled affinity towards human endothelial cells (Scheme 1a). These anisotropic particles consist of two distinct compartments that can exhibit vastly different functions. Here, functional bipolarity is realized by selective surface modification to create polymer particles with two biologically distinguishable hemispheres: one exhibiting high binding affinity for human endothelial cells and the other being essentially resistant towards cell binding (Scheme 1).

Bicompartmental particles were synthesized by simultaneous electrohydrodynamic co-jetting of two different solutions of polyacrylamide/poly(acrylic acid) co-polymers (PAAm-co-AA, Scheme 1b). While the base polymers were generally the same for both hemispheres, different functional groups were selectively incorporated into compartments to enable subsequent surface modifications. For instance, PAAm-co-AA polymers modified with biotin were used as components of one of the jetting solutions, when subsequent surface modification with streptavidin (SAv) was intended. The biotin-modified PAAm-co-AA polymer was obtained in a simple one-step synthesis. Carboxylic acid groups of PAAm-co-AA were activated using 1-ethyl-3-(3-dimethylamino-propyl)carbodiimide hydrochloride in combination with *N*-hydroxysulfo-succinimide sodium salt (EDC/sulfo-NHS) as coupling agents. After the reaction, excess reagent and urea were removed by dialysis and the final product was lyophilized and characterized by ¹H-NMR spectroscopy (Supporting Information, Fig. S1). Alternatively, acetylene-modified PAAm-co-AA was added to the jetting solutions, when compartment-specific surface modification via copper(I)-catalyzed Huisgen 1,3-dipolar cycloaddition was intended. For this purpose, acetylene-modified PAAm-co-AA was prepared using a method similar to the one used for biotin modification of PAAm-co-AA. Again, free acid groups were activated in the presence of EDC/sulfo-NHS and were reacted with propargyl amine at room temperature for four

[*] Prof. J. Lahann, Dr. M. Yoshida, Dr. S. Mandal, Dr. D. Lim, H. Nandivada
Department of Chemical Engineering
The University of Michigan
3414 GGBL, 2300 Hayward
Ann Arbor, MI 4809
E-mail: lahann@umich.edu
Prof. J. Lahann, Dr. K.-H. Roh, S. Bhaskar, X. Deng
Macromolecular Science and Engineering
The University of Michigan
Ann Arbor, MI 4809
Prof. J. Lahann
Department of Materials Science and Engineering
The University of Michigan
Ann Arbor, MI 4809

DOI: 10.1002/adma.200901971



Scheme 1. Synthesis and unidirectional self-assembly of bicompartimental particles. a) Scheme for the binding of bicompartimental particles to cells via streptavidin present on the particle surface of one compartment and biotin from cell-specific antibody (in this case PECAM). b) Bicompartimental particles were fabricated via electrohydrodynamic co-jetting of polymer solutions. Reaction schemes for the incorporation of PEG and streptavidin are shown as examples.

hours, as confirmed by $^1\text{H-NMR}$ spectroscopy (Supporting Information, Fig. S1). Moreover, fluorescein isothiocyanate (FITC)- or rhodamine-conjugated dextran were selectively added to the jetting solutions to confirm particle anisotropy or to monitor unidirectional association between particles and cells using fluorescence imaging (Scheme 1a).^[34]

In general, electrohydrodynamic co-jetting of two different PAAm-co-AA solutions yielded particles with well-defined, spherical morphologies. Figure 1a shows a confocal laser scanning microscopy (CLSM) image of a typical batch of bicompartimental particles suspended in aqueous solution. The CLSM image reveals confinement of green and red fluorescence into individual hemispheres, suggesting the presence of two distinct compartments. The presence of distinct compartments was further supported by quantitative analysis of a representative population of bicompartimental particles via flow cytometry (Fig. 1b). In this experiment, bicompartimental particles containing Atto 665 in one compartment and FITC in the other compartment were compared to bicompartimental particles without the fluorochromes or those with either Atto 665 or FITC alone in one of the compartments. For bicompartimental particles loaded with both fluorochromes, more than 95% of the particle population was localized in the upper right quadrant, indicating that the particles were indeed positive for both Atto 665 and FITC (Fig. 1b,c). This result was in distinct difference

to the remaining three particle populations, which were either positive for Atto 665 or FITC only or did not contain any fluorochrome (lower left quadrant). The flow cytometric data are in excellent agreement with the bicompartimental nature of the particles, as observed by CLSM (Fig. 1a), and were in general agreement with previously reported bicompartimental particles.^[34] To stabilize the particles for subsequent surface modification and use in physiological media, bicompartimental particles were cross-linked via thermal imidization,^[36] which resulted in particles that formed a well-dispersed suspension and were stable over several weeks. After surface modification with polyethylene glycol (PEG) and streptavidin, the bicompartimental particle suspensions were examined by CLSM. A typical CLSM image of an aqueous particle suspension (pH = 7.4) is shown in Figure S2 of the Supporting Information. Image analysis revealed an average hydrodynamic radius of 847 nm and a standard deviation of 478 nm for the particles shown in Figure S2. This is higher than comparable bicompartimental particles without surface modification, which had an average radius of 427 ± 234 nm, determined by dynamic light scattering.^[36]

Prior to studying directed interactions of bicompartimental particles with human endothelial cells, the initial biocompatibility of these particles was evaluated. Human umbilical vein endothelial cells (HUVECs) were incubated with non-modified bicompartimental PAAm-co-AA particles or those that were surface-modified

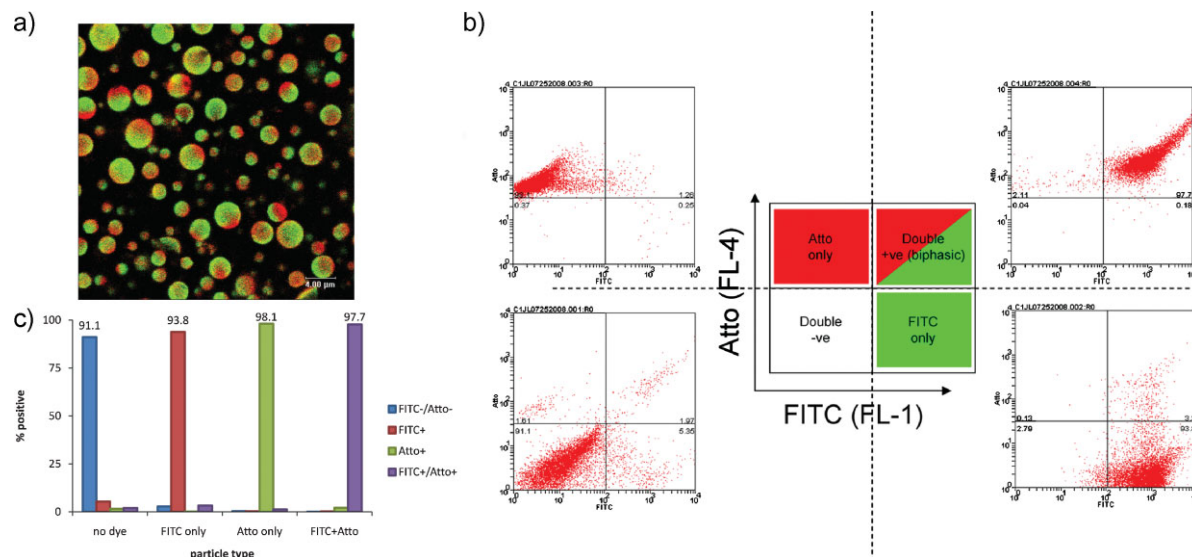


Figure 1. Particle characterization. a) CLSM image of bicompartiment particles presenting PEG on both compartments (red and green) and streptavidin in the compartment including rhodamine dextran (red). b) Flow cytometry analysis of bicompartimental particles. c) Graphical representation of the flow cytometry data shown in (b). Further details are provided in the Supporting Information, Figure S3.

with either PEG or biotin/streptavidin for 24 or 96 hours at various concentrations. The presence of the particles did not significantly affect the proliferation of HUVECs, as determined by a standard MTS assay [3-(4,5-dimethylthiazol-2-yl)-5-(3-carboxymethoxyphenyl)-2-(4-sulfophenyl)-2H-tetrazolium] (Fig. 2a). Similarly, cell viability evaluated using Annexin V and propidium iodide (PI) as markers of cell apoptosis and death, respectively, revealed no statistically significant difference in the total percentage of live cell population after exposure to particles, as compared to cells grown in the absence of particles. These initial biocompatibility experiments suggest that the herein developed bicompartimental microparticles do not appear to exhibit significant cytotoxic effects that would result in a decrease of cell proliferation and viability. In fact, the data obtained for surface-modified PAAm-co-AA particles are in general agreement with a previous analysis of short-term biocompatibility of bicompartimental particles^[37] and confirm that the introduction of bicompartimental particles to HUVECs may be considered safe, at least in vitro, within the particle doses and incubation times pursued herein to form bio-hybrid materials.

To demonstrate compartment-specific association between bicompartimental particles and human cells, particles prepared by electrohydrodynamic co-jetting were selectively modified with streptavidin in one hemisphere only. The selective incorporation of biotin in one compartment was confirmed by self-assembly of biotin with fluorescence-labeled streptavidin and subsequent CLSM analysis (Supporting Information, Fig. S3). These particles were then incubated under serum-free conditions with human endothelial cells that were labeled with either biotinylated antibody against platelet endothelial cell-adhesion molecule (PECAM), which is highly expressed on endothelial cells including HUVECs, or with a biotinylated isotype antibody, which exhibits only low-level, non-specific binding to the cells. This preparation was pursued to ensure introduction of a biotin linker, which binds to streptavidin with exceptionally high affinity, thereby effectively coupling cells and particles (Scheme 1). We further confirmed the controlled binding of particles in the presence of serum, since

serum contains proteins that potentially may interfere with the ability to undergo self-assembly. In a control experiment, monocompartimental PAAm-co-AA particles (i.e., particles with one single compartment) were prepared by electrohydrodynamic jetting, which contained 13% (w/w) of the biotin-modified PAAm-co-AA polymer, and were allowed to contact surfaces that presented the complementary binding molecule streptavidin. To prepare these surfaces, we used chemical vapor deposition (CVD) polymerization, which has been used previously for deposition of reactive coatings onto flat and 3D substrates.^[40–42] In this case, we used CVD polymerization to deposit approximately 50-nm-thick films of poly(4-heptadecafluorononanoil-*p*-xylylene-co-*p*-xylylene), followed by immobilization of biotin-hydrazide and streptavidin.^[43] The streptavidin-presenting substrates were incubated with particles under serum-containing conditions (2% fetal bovine serum, FBS). Particles without biotin ligands were used as a reference. As shown in Figure S5 of the Supporting Information, biotin-containing particles but not biotin-free particles bound to the streptavidin-modified surfaces. The presence of serum did not prevent the ability of the particles to bind to the surface as indicated by the increase in red color for the biotin-containing particles.

Finally, particle binding to cells was assessed by flow cytometry as the increase in cell-associated FITC fluorescence, which is caused by cell/particle association. Initial experiments revealed substantial non-specific binding between bicompartimental particles modified with streptavidin in one compartment and human endothelial cells. This non-specific binding was present also with non-modified bicompartimental particles, regardless of whether the cells were stained with endothelial-cell-specific or with non-specific control antibodies (Fig. 3a). The non-specific binding established a serious challenge to further steps towards the design of well-defined bio-hybrid materials, as the preparation of structurally controlled bio-hybrid materials require high selectivity between binding and non-binding particle compartments. To mitigate the non-specific binding of particles to cells, the entire particle surface, i.e., the surface of both compartments, was coated with PEG via

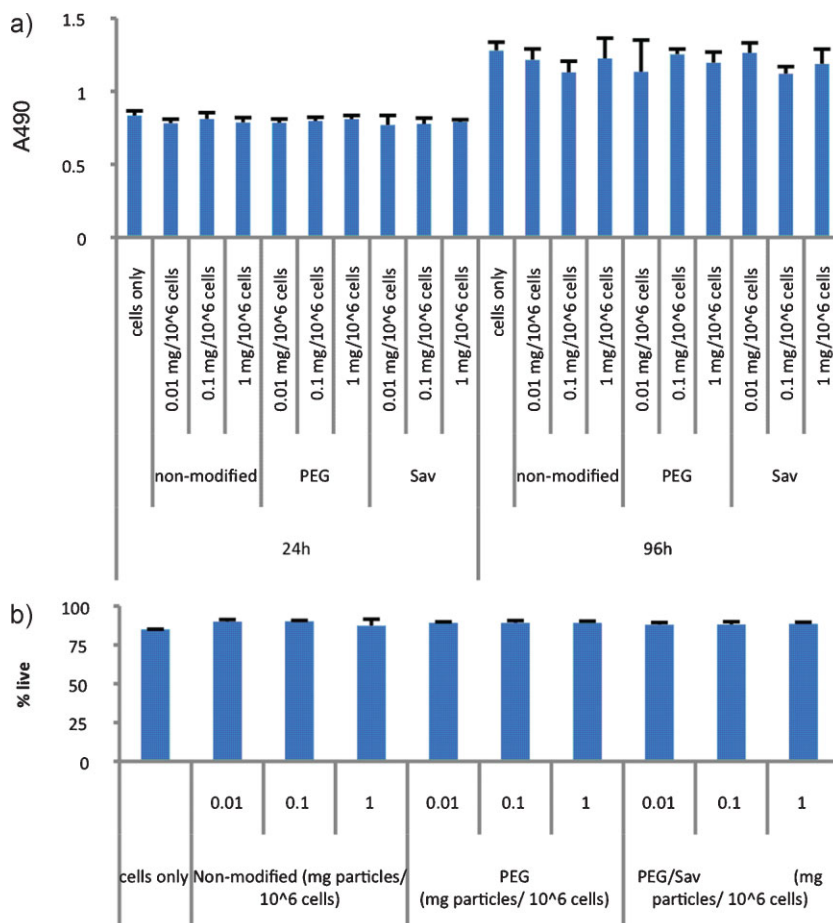


Figure 2. Short-term biocompatibility of bicompartmental particles with various surface modifications. a) Effect of bicompartmental particles on HUVEC proliferation as measured by a colorimetric MTS assay. b) Effect of bicompartmental particles on HUVEC viability as assessed by flow cytometry via Annexin V/PI labeling.

copper(I)-catalyzed Huisgen 1,3-dipolar cycloaddition. The coupling reaction occurred between acetylene groups of acetylene-modified PAAm-co-AA added to both jetting solutions and azide groups introduced to PEG prior to surface coupling.^[9,10] As expected, modification of the particle surface via immobilization of PEG significantly decreased non-specific association between particles and cells (Fig. 3a). Moreover, streptavidin-modified particles bound specifically to HUVECs that were labeled with antibody against PECAM but not to cells labeled with the isotype control antibody. The fluorescence signal for cells incubated with the non-specific isotope antibody was not significantly different from cell autofluorescence observed with cells in the absence of particles. This strongly supports unidirectional association between anisotropic particles and human endothelial cells. The flow cytometric analysis was further supported by CLSM (Fig. 3b). For this purpose, cells bound to particles were separated from free particles by fluorescence activated cell sorting. The overlay of differential interference contrast and fluorescent images corroborate increased cellular binding observed with streptavidin-modified particles as compared to particles that were not modified or presented PEG alone.

When incubated with human endothelial cells, these particles exhibit a bipolar behavior, where one compartment exhibits

binding affinity towards human endothelial cells, while the other compartment was essentially non-binding (Fig. 3). In this design, particles not only bound to the top of the human endothelial cells, but associated all around the perimeter of cells forming a single particle lining (Fig. 4).

With the fundamental feasibility of anisotropic particles for self-association with cells demonstrated, future work will need to diversify on the type of anisotropic building blocks that can be designed for use in bio-hybrid materials. An essential requirement for bio-hybrid materials will be the availability of synthetic building blocks that can provide directionally controlled binding patterns at cellular or subcellular resolution. Specifically, controlling the number of compartments, compartment sizes, the relative positioning of compartments on a particle, or the introduction of differently shaped building blocks, such as bicompartmental rods, will enable the synthesis of many novel bio-hybrid architectures. Such novel type of biomaterials may be of equal importance for medical as well as biotechnological applications including regenerative medicine, medical imaging, and the design of novel actuators or power harvesting and storage devices.

Experimental

Materials: Poly(acrylamide-co-acrylic acid, sodium salts) (PAAm-co-AA) (M_w 200 kD, 10% acrylic acid residues) was purchased from Polysciences (Warrington, PA). Polyethylene glycol monomethyl ether mesylate (methyl-PEG-mesylate, M_w 5 kD, Fluka) and sodium azide (Sigma) were dissolved in dimethylformamide (DMF) and stirred at 60 °C for 24 h. The polymer product was precipitated by addition of excess ethyl ether and recovered by filtration. The filtrate was dissolved in water and dialyzed (membrane molecular weight cut off is 3 kD) overnight and subsequently lyophilized.

Fabrication of Bicompartmental Particles via Electrohydrodynamic co-jetting: Bicompartmental PAAm particles were prepared by electrohydrodynamic co-jetting as previously described [34,36]. All components were dissolved in double distilled (dd) H₂O and reported as weight per volume. Particles presenting acetylene groups or biotin were prepared using the following jetting solutions, respectively, with 0.5% FITC- or rhodamine-conjugated dextran: 4% PAAm-co-AA and 1% acetylene-modified PAAm-co-AA or 3% PAAm-co-AA, 1% acetylene-modified PAAm-co-AA, and 1% biotin-modified PAAm-co-AA. Following the electrohydrodynamic co-jetting, particles were incubated at 175 °C for 3 h to induce thermal imidization between carboxylic acid and amide groups.

Surface Modification of Bicompartmental Particles: Particles were modified with PEG using a copper(I)-catalyzed Huisgen 1,3-dipolar cycloaddition. Briefly, bicompartmental particles were suspended in dd H₂O, to which methyl-PEG-azide was added. 0.3 M sodium ascorbate and 0.03 M CuSO₄ · H₂O were added to the suspension, and the mixture was maintained on a hematology mixer at room temperature for 10 h. Resulting particles were washed 3 times with dd H₂O by centrifugation and finally resuspended in phosphate buffered saline (PBS). Next, PEG-modified particles prepared from jetting solution containing biotin-modified

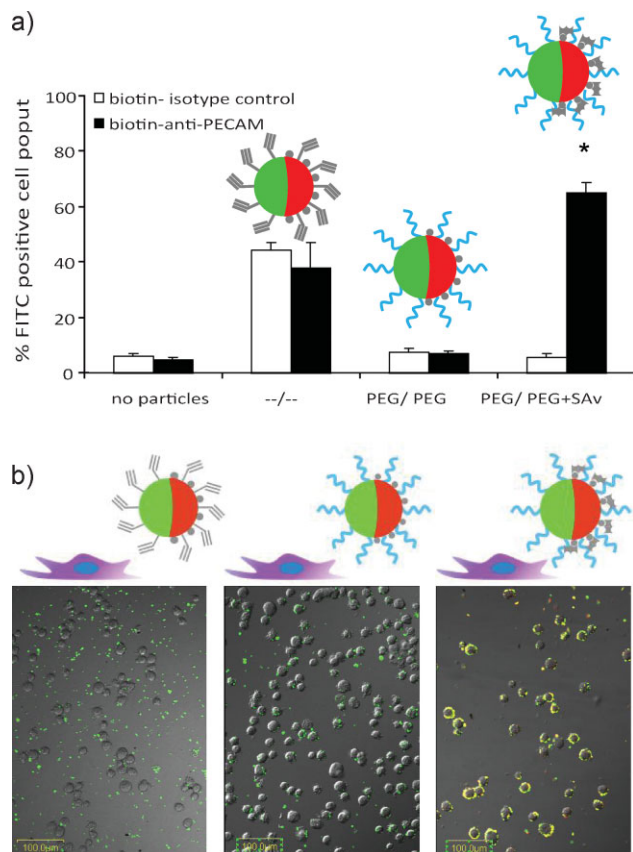


Figure 3. Directional cell binding of bicompartmental particles. a) Quantification of the percent of cell population with bound bicompartmental particles and corresponding CLSM images. --/--: unmodified bicompartmental particles, PEG/PEG: bicompartmental particles with PEG on the surface of both compartments, PEG/PEG + SAv: bicompartmental particles with PEG on surface of both compartments with streptavidin (SAv) only on the surface of one compartment. b) Overlays of CLSM images with differential interference contrast images corresponding to the samples studied by flow cytometry. All scale bars are 100 μm .

PAAm-co-PAA were suspended in PBS and incubated with streptavidin (Pierce, Rockford, IL) for 6 h at room temperature on a hematology mixer. The final suspension was washed with fresh PBS 3 times and isolated by centrifugation.

Characterization of Bicompartmental Particles: For imaging of the particles by CLSM (SP2 CLSM, Leica, USA), a suspension of bicompartmental particles in water was placed between two cover slips. FITC and rhodamine were excited with Ar/ArKr or GreNe laser at 488 nm or 543 nm, respectively. Typical images of bicompartmental particle suspensions were analyzed by Image J [44] to obtain size-distribution measurements (Supporting Information, Figure S2). The errors in particle recognition by Image J were corrected for individual particles by visual comparison with the original image and the surface area of individual particle was converted to the diameter assuming a perfectly spherical envelope.

Bicompartmental character of the particles was analyzed by flow cytometry as previously described [36]. To minimize any bleed-over of fluorescent dyes, FITC- and Atto 655-conjugated dextrans were used. Particles without any fluorochrome, those loaded with either FITC- or Atto 655-dextran alone, or those with both fluorochrome in each compartment were resuspended in PBS and analyzed using fluorescence-activated cell sorting (FACSCalibur, Becton Dickinson Biosciences, San Jose, CA) at the University of Michigan Flow Cytometry Core Facility. For each sample, 20000 events were collected and fluorescence signals from FITC-

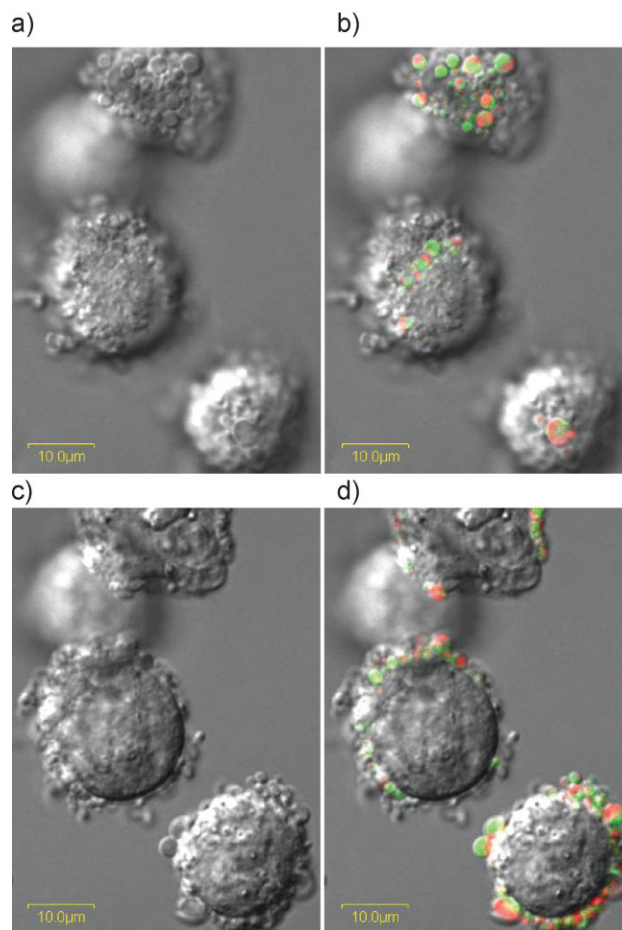


Figure 4. Self-assembly of bicompartmental particles and human endothelial cells. a,c) CLSM images and b,d) overlays of CLSM images with differential interference contrast images of human endothelial cells self-assembled with PEG/PEG + SAv particles. Images were taken within the same field of view at two different focal planes towards the top of the cells (a,b) and at half cell height (c,d). All scale bars are 10 μm .

and Atto 655-conjugated dextrans were resolved in FL1 (excitation with a 488 nm laser with 530/30 bandpass filter) and FL4 (excitation with a 635 nm laser with 661/16 bandpass filter) channels, respectively. Data acquisition was performed using CellQuest Pro (BD Biosciences) and analysis was performed using WinMDI (Scripps Research Institute, La Jolla, CA, USA). Population within the first decade is considered to be negative for the fluorescence and the double positive population in the upper right corner is considered to be bicompartmental.

Short-Term Biocompatibility of Bicompartmental Particles: The effect of bicompartmental particles on HUVEC proliferation was evaluated using a commercially available colorimetric cell proliferation assay (CellTiter 96 Aqueous One Solution Cell Proliferation Assay, Promega, Madison, WI, USA) as previously reported [37]. Briefly, particles were added to cells cultured in Endothelial cell Growth Media containing 2% FBS (Lonza, Basel, Switzerland) at a dose of 0.01, 0.1, or 1 mg per 10^6 initial number of cells seeded. At 4, 24, 48, 72, and 96 h after incubation with the bicompartmental particles, colorimetric reagent was added for 4 h and absorbance was measured at 490 nm using a spectrophotometric plate reader (Molecular Dynamics).

The degree of cytotoxicity of bicompartmental particles was assessed by viability staining using flow cytometry as previously described [37]. In brief, HUVECs cultured in Endothelial cell Growth Media containing 2% FBS incubated with or without 0.01, 0.1, or 1 mg bicompartmental nanocolloids

(FITC only) per 10^6 initially seeded cells for 24 h were stained with Alexa fluor 647-conjugated Annexin V and PI (Invitrogen) for 30 min. Samples were analyzed by FACSCalibur. Cell population with increased fluorescence resolved in FL1 channel (excitation by 488 nm laser, 530/30 filter) was gated as cells with associated bicompartamental particles. Cell population that were double negative or positive for both Annexin V (resolved in FL4, excitation by a 635 nm laser with 661/16 filter) and PI (resolved in FL2, excitation by a 488 nm laser with 585/42 filter) were considered to be dead or alive, respectively.

Directional Binding of Bicompartamental Particles to Cells: Binding of bicompartamental particles to cells was first evaluated using flow cytometry. Human umbilical vein endothelial cells (HUVECs; p5) suspended in 0.5% bovine serum albumin (BSA) in PBS were stained with biotin-conjugated anti-human IgG isotype control or anti-human CD31 antibody (Southern Biotech, Birmingham, AL) for 30 min at 4 °C. Upon washing in ice-cold buffer (PBS + 0.5% BSA) 3 times by centrifugation, these cells were subsequently incubated with indicated particles (0.5 mg per 10^6 cells) for 30 min at 4 °C on hematology mixer, washed, and assessed by flow cytometry using a BD FACSCalibur (Becton Dickinson, Franklin Lakes, NJ) and reported as percent of cell population with bound particles.

In some cases, cells bound to particles were sorted to separate non-bound, free particles by fluorescence activated cell sorting using BD FACSDiVa (Becton Dickinson) equipped with 3 lasers (488 nm, 350 nm, and 633 nm). Cell population before and after sorting were viewed using an Olympus FluoView 500 laser scanning confocal microscope (Olympus America, Center Valley, PA) equipped with a diode laser with UV excitation (405 nm), a multi-line argon laser (458 nm, 488 nm, and 515 nm), and two solid-state Helium Neon lasers (543 nm and 633 nm).

Orientation of particle binding to cells was further visualized using CLSM. HUVECs grown on poly-L-lysine coated cover slips were rinsed 3 times with D-PBS, then fixed with 4% paraformaldehyde (Sigma) and permeabilized with 0.1% Triton X-100 (Sigma). Upon rinsing with PBS with 0.1% Tween20 (PBS-T), cells were blocked with 5% normal goat serum (NGS) (Zymed, Carlsbad, CA) for 1 h. Cells were then stained with mouse anti-human PECAM (Chemicon, Billerica, MA) for 1 h, followed by biotin-conjugated goat anti-mouse IgG1 (Caltag Laboratories, Carlsbad, CA) and in some cases also with Alexa 633-conjugated phalloidin for 30 min. Cells were washed and subsequently incubated with indicated particle suspensions on a rotator for 30 min under serum-free conditions. Loosely or non-bound particles were washed with PBS-T. Cover slips were mounted with ProLong Gold and stained with 4',6-diamidino-2-phenylindolylhydrochloride (DAPI, Invitrogen, Carlsbad, CA) and stored overnight at 4 °C and imaged using an Olympus FluoView 500 laser scanning confocal microscope (Olympus America).

Statistical Analysis: Statistical analysis was performed using a general linear model ANOVA with Minitab software (Version 15, Minitab, State College, PA, USA). Unless otherwise indicated, *p*-values of 0.05 were considered significant. Experiments were repeated as indicated.

Acknowledgements

M. Y. and K. H. R. contributed equally to this work. Supporting Information is available online from Wiley InterScience or from the author.

Received: June 12, 2009

Published online: September 18, 2009

[1] N. A. Peppas, R. Langer, *Science* **1994**, 263, 1715.

[2] R. Langer, D. A. Tirrell, *Nature* **2004**, 428, 487.

[3] S. Mitragotri, J. Lahann, *Nat. Mater.* **2009**, 8, 15.

- [4] M. Yoshida, R. Langer, A. Lendlein, J. Lahann, *Polym. Rev.* **2006**, 46, 347.
- [5] W. F. Liu, C. S. Chen, *Adv. Drug Delivery Rev.* **2007**, 59, 1319.
- [6] N. A. Peppas, J. Z. Hilt, A. Khademhosseini, R. Langer, *Adv. Mater.* **2006**, 18, 1345.
- [7] M. C. Cushing, K. S. Anseth, *Science* **2007**, 316, 1133.
- [8] V. L. Tsang, S. N. Bhatia, *Adv. Drug Delivery Rev.* **2004**, 56, 1635.
- [9] D. W. Huttmacher, *J. Biomater. Sci. Polym. Ed.* **2001**, 12, 107.
- [10] D. S. Kohane, R. Langer, *Pediatr. Res.* **2008**, 63, 487.
- [11] A. Khademhosseini, R. Langer, J. Borenstein, J. P. Vacanti, *Proc. Natl. Acad. Sci. USA* **2006**, 103, 2480.
- [12] M. Goldberg, R. Langer, X. Q. Jia, J. *Biomater. Sci. Polym. Ed.* **2007**, 18, 241.
- [13] J. Venugopal, S. Low, A. T. Choon, S. Ramakrishna, *J. Biomed. Mater. Res. B* **2008**, 84B, 34.
- [14] I. K. Kwon, S. Kidoaki, T. Matsuda, *Biomaterials* **2005**, 26, 3929.
- [15] F. Yang, R. Murugan, S. Wang, S. Ramakrishna, *Biomaterials* **2005**, 26, 2603.
- [16] S. Bhaskar, J. Lahann, *J. Am. Chem. Soc.* **2009**, 131, 6650.
- [17] S. Y. Chew, Y. Wen, Y. Dzenis, K. W. Leong, *Curr. Pharm. Des.* **2006**, 12, 4751.
- [18] J. Xie, X. Li, Y. Xia, *Macromol. Rapid Commun.* **2008**, 29, 1775.
- [19] T. J. Sill, H. A. von Recum, *Biomaterials* **2008**, 29, 1989.
- [20] A. W. Feinberg, A. Feigel, S. S. Shevkoplyas, S. Sheeky, G. M. Whiteside, K. K. Parker, *Science* **2007**, 317, 1366.
- [21] M. Ebara, M. Yamato, T. Aoyagi, A. Kikuchi, K. Sakai, T. Okano, *Biomacromolecules* **2004**, 5, 505.
- [22] S. Okajima, Y. Sakai, T. Yamaguchi, *Langmuir* **2005**, 21, 4043.
- [23] O. Kriha, M. Becker, M. Lehmann, D. Kriha, J. Kriegelstein, M. Yosef, S. Schlecht, R. B. Wehrspohn, J. H. Wendorff, A. Greiner, *Adv. Mater.* **2007**, 18, 2483.
- [24] A. J. Swiston, C. Cheng, S. H. Um, D. J. Irvine, R. E. Cohen, M. F. Rubner, *Nano Lett.* **2008**, 8, 4446.
- [25] M. Yoshida, J. Lahann, *ACS Nano* **2008**, 6, 1101.
- [26] A. S. Utada, E. Lorenceau, D. R. Link, P. D. Kaplan, H. A. Stone, D. A. Weitz, *Science* **2005**, 308, 537.
- [27] S. Q. Xu, Z. H. Nie, M. Seo, P. Lewis, E. Kumacheva, H. A. Stone, P. Garstecki, D. B. Weibel, I. Gitlin, G. M. Whitesides, *Angew. Chem. Int. Ed.* **2005**, 44, 724.
- [28] T. Nisisako, T. Torii, T. Takahashi, Y. Takizawa, *Adv. Mater.* **2006**, 18, 1152.
- [29] Z. H. Nie, W. Li, M. Seo, S. Q. Xu, E. Kumacheva, *J. Am. Chem. Soc.* **2006**, 128, 9408.
- [30] T. Nisikado, T. Torii, *Lab on a chip* **2008**, 8, 287.
- [31] J. P. Rolland, B. W. Maynor, L. E. Euliss, A. E. Exner, G. M. Denison, J. M. DeSimone, *J. Am. Chem. Soc.* **2005**, 127, 10096.
- [32] D. Dendukuri, D. C. Pregibon, J. Collins, T. A. Hatton, P. S. Doyle, *Nat Mater.* **2006**, 5, 365.
- [33] A. Walther, K. Matussek, A. H. E. Mueller, *Nano* **2008**, 2, 1167.
- [34] K.-H. Roh, D. C. Martin, J. Lahann, *Nat. Mater.* **2005**, 4, 759.
- [35] K.-H. Roh, D. C. Martin, J. Lahann, *J. Am. Chem. Soc.* **2006**, 128, 6796.
- [36] K.-H. Roh, M. Yoshida, J. Lahann, *Langmuir* **2007**, 23, 5683.
- [37] M. Yoshida, K.-H. Roh, J. Lahann, *Biomaterials* **2007**, 28, 2446.
- [38] S. Bhaskar, J. Hitt, S. W. L. Chang, J. Lahann, *Angew. Chem. Int. Ed.* **2009**, 25, 4589.
- [39] S. Bhaskar, K.-H. Roh, X. Jiang, G. A. L. Baker, J. Lahann, *Macromol. Rapid Commun.* **2008**, 29, 1655.
- [40] J. Lahann, *Polym. Int.* **2006**, 55, 1361.
- [41] H.-Y. Chen, Y. Elkasabi, J. Lahann, *J. Am. Chem. Soc.* **2006**, 128, 374.
- [42] H. Y. Chen, J. Lahann, *Anal. Chem.* **2005**, 77, 6909.
- [43] H. Nandivada, H. Y. Chen, J. Lahann, *Macromol. Rapid Commun.* **2005**, 26, 1794.
- [44] M. D. Abramoff, P. J. Magelhaes, S. J. Ram, *Biophotonics Int.* **2004**, 11(7), 36.