

Initiation of Cracks in Dental Amalgam

OSAMA YOUNIS,* KAMAL ASGAR, and JOHN M. POWERS

School of Dentistry, University of Michigan, Ann Arbor, Michigan 48104, USA

The force required to initiate cracks in dental amalgam beams was measured and related to the microstructure. The force measured was dependent on age and on the distribution of phases on the tension side of the beam. The Ag-Cu phase is most resistant to failure in Dispersalloy and an experimental alloy.

During the past 12 years, several amalgam alloys have been developed and are commercially available. Spherical alloys and Dispersalloy^a are two examples of the new alloys that have been developed.

In 1965, Asgar and Sutfin¹ developed a technique for studying the relationship of crack initiation to the microstructure of dental amalgam. According to their results, the path of cracks induced by bending stresses goes through voids and the γ_2 phase, then

through the grain boundaries of the γ_1 phase, then around the γ phase, and then through the γ phase. However, they did not study the magnitude of force needed to initiate and propagate a crack.

The study reported here was undertaken not only to determine the force needed to initiate and propagate a crack in dental amalgam but also to study the initiation and propagation of cracks in Dispersalloy and spherical amalgam alloys.

Materials and Methods

Three commercial dental amalgam alloys and one experimental alloy were triturated in mechanical amalgamators. Alloy-mercury ratios and trituration times used are shown in Table 1.

The triturated amalgam was packed with a 1-mm diameter plugger in a three-piece steel die with the dimensions of $0.06 \times 0.06 \times 1.06$ inches.¹ The amalgam beam was allowed to set for 15 minutes before being removed. A total of ten beams were prepared from each alloy. Five beams were tested after two days and the remainder after four months. All the specimens were kept in an incubator at 37°C for the aforementioned periods. After the assigned period, amalgam beams were embedded in a cold-

TABLE I
ALLOY-MERCURY RATIO AND TRITURATION TIME

Alloy	No. of Specimens	Hg/Alloy Ratio (%)	Trituration Time (sec)	Amalgamator Used
Optaloy	10	54	12	Capmaster*
Spher-A-Cap	10	48	15	Capmaster
Dispersalloy	10	50	10	Capmaster
Experimental alloy†	10	50	15	Mc Shirley‡

* S. S. White Dental Manufacturing Co., Philadelphia, Pa.

† All spherical alloys were composed of the following: Ag-Cu spherical particle: Ag, 72%, Cu, 28%; Ag₃Sn spherical particle: Ag, 70% Sn, 27.5%; and Cu 2.5% proportioned at one third Ag-Cu to two thirds Ag-Sn.

‡ Kerr Manufacturing Co., Romulus, Mich.

curing plastic.^b The amalgam beams embedded in the plastic, hereafter called the composite beams, were polished for microstructural studies, following the procedure described by Allen, Asgar, and Peyton.²

The strain gauges^c were cemented on the indenter of the Flinn Strain Viewer^d (Fig 1). The strain gauges were connected to a strain gauge amplifier. The strain gauges were then calibrated using a testing machine.^e Detailed specimen preparation and testing procedure are given elsewhere.³

Specimens were then studied microscopically. The force needed to initiate the crack was determined. Specimens were etched with iodide etch.² The force data were treated statistically using the one- and two-way analysis of variance.⁴ The Scheffe test was used

^b Fibre Glass-Evercoat Co., Inc., Cincinnati, Ohio.

^c $120.0 \pm 0.4\%$ resistance in ohms, Micro-Measurements Co., Romulus, Mich.

^d Dietert, Detroit, Mich.

^e Universal Testing Instruments, Model TT-B, Instron Corp., Canton, Mass.

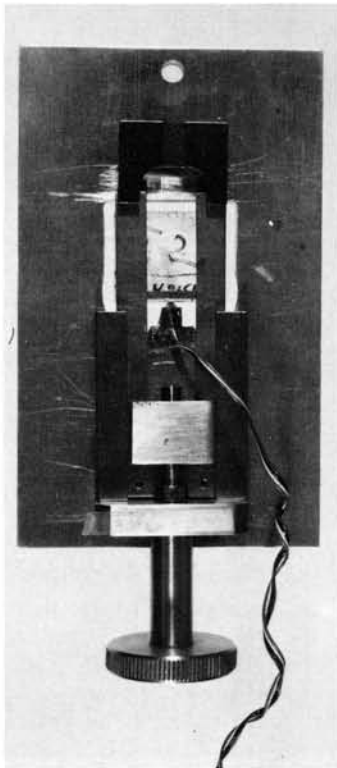


FIG 1.—Flinn Strain-Viewer with strain gauges cemented to indenter.

TABLE 2
FORCE DATA OBTAINED FOR TWO-DAY- AND
FOUR-MONTH-OLD SPECIMENS

Alloy Used	Force (kg)	
	2 Days	4 Mo
Optaloy 2.2 cm*	8.8† (1.2)	36.8† (1.2)
Spher-A-Cap 2.2 cm*	14.1† (0.7)	34.2† (3.3)
Dispersalloy 2.1-1.7 in*	11.1‡ (1.8)	17.9 (1.4)
Experimental alloy 2.1-1.8 cm*	15.5‡ (2.5)	18.2 (1.3)

* Width of composite beam

† Statistically significant at the 95% confidence level using the two-way analysis of variance.

‡ Statistically significant at the 95% confidence level using the one-way analysis of variance. SD in parentheses; N=5 in all cases.

for making comparisons among the means.⁴ Photomicrographs were taken with the scanning electron microscope.^f

Results

The force data obtained for two-day and four-month specimens are summarized in Table 2. Values for Optaloy^g and Spher-A-Cap^h both for two-day- and four-month-old specimens were different statistically as determined by two-way analysis of variance. A difference between means of 2.0 kg as calculated by the Scheffe method was needed to show a statistically significant effect. Values for Dispersalloy and the experimental alloy (two-day-old specimens) were statistically different as determined by one-way analysis of variance at the 95% confidence level. The values for Dispersalloy and the experimental alloy (four-month-old specimens) were not compared because of the differences in beam widths.

The phases through which the crack was initiated and propagated together with the possible choices among the phases on the tension side of the beam are summarized and presented as frequency data in Table 3.

Discussion

Theoretical beam width is influenced in part by the strength and modulus of elasticity

^f Model TSM-U3, Japan Electron Optics Laboratory Co., LTD, Japan.

^g Lot no. 1264-601602, L. D. Caulk Co., Milford, Del.

^h Lot no. 1028, Kerr Manufacturing Co., Romulus, Mich.

TABLE 3
FREQUENCY OF CRACK INITIATION IN TWO-DAY- AND
FOUR-MONTH-OLD SPECIMENS

Alloy Used	Frequency	Possible Phases for Crack Initiation			Phases Picked by the Crack	
		γ	γ_1	γ_2	γ_1	γ_2
Optaloy, 2 days	2	γ	γ_1		γ_1	
	3	γ	γ_1	γ_2	γ_1 (1) ;	γ_2 (2)
	1	v	γ_1	γ_2	v	
Optaloy, 4 mo	2	γ	γ_1		γ_1	
	3	γ	γ_1	γ_2	γ_1 (1) ;	γ_2 (2)
	1		γ_1	γ_2		γ_2
Spher-A-Cap, 2 days	3	γ	γ_1	γ_2	γ_1 (1) ;	γ_2 (2)
	1	γ	γ_1		γ_1	
	1	γ		γ_2		γ_2
	1		γ_1	γ_2		γ_2
Spher-A-Cap, 4 mo	2	γ	γ_1	γ_2		γ_2
	2	γ	γ_1		γ_1	
	1	γ		γ_2		γ_2
Commercial dispersed alloy, 2 days	2	γ	γ_1	E	γ_1	
	1		γ_1	E	γ_1	
	1	γ	γ_1		γ_1	
	1		γ_1		γ_1	
Commercial dispersed alloy, 4 mo	2	γ	γ_1	E	γ_1	
	1		γ_1	E	γ_1	
	2	γ	γ_1		γ_1	
All-Spherical dispersed alloy, 2 days	3	γ	γ_1	E	γ_1	
	1		γ_1	E	γ_1	
	1	γ		E	γ	
All-Spherical dispersed alloy, 4 mo	3		γ_1	E	γ_1	
	1	γ	γ_1		γ_1	
	1	γ	γ_1	E	γ_1	

Note: γ represents the unreacted Ag-Sn phase; γ_1 , Ag-Hg phase; γ_2 , Sn-Hg phase; v, void; and E, Ag-Cu eutectic phase.

of the amalgam. Since the strength and modulus of elasticity of Dispersalloy and the experimental alloy change with time, the width of the beam required to initiate a stable crack is also time dependent. The increase in mechanical properties of these two alloys is because of elimination of the γ_2 phase.⁵⁻⁷

The force data show that the Optaloy and Spher-A-Cap beams need more force to initiate a crack as the beam ages and suggest that either the strength of the amalgam is improved with time or the elastic modulus of the amalgam changes with time, either of which may have been caused by some changes in the microstructure of the amalgam. Differences in the microstructure between the two-day- and four-month-old specimens were

not obvious from the photomicrographs. These microstructural changes might be manifested as a decrease in the weaker phase.

Crack initiation in Optaloy and Spher-A-Cap differed greatly depending on the phases present on the tension side of the amalgam beam. From Table 3, it was observed that in every instance where the three phases (γ , γ_1 and γ_2) were represented, the crack initiated in the γ_2 phase. The distribution of the various phases in the set dental amalgam varies greatly. The largest percentage of set amalgam mass consists of γ_1 and γ phases, whereas the contribution of γ_2 phase is rather small.^{8,9} The probability of having γ_1 phase in the tension side of the amalgam beam is higher than obtaining γ_2 phase. The initiation of the crack in Optaloy and

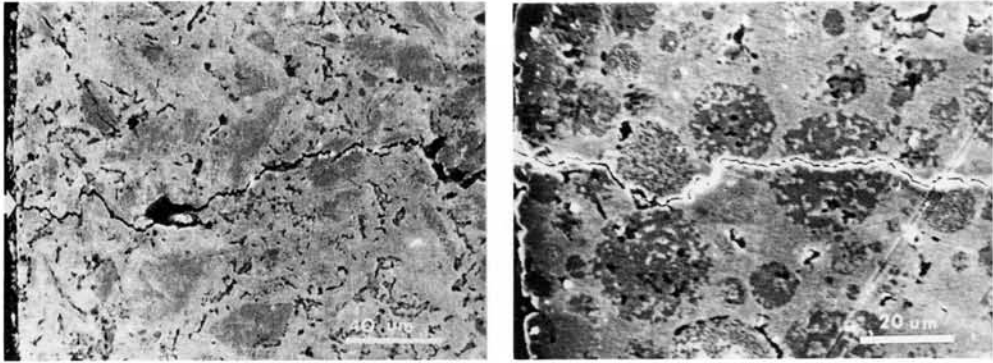


FIG 2.—Photomicrographs of Optaloy (left) and Spher-A-Cap (right). Arrows indicate initiation of cracks. Note 90° change in direction of crack near initiation of crack (Optaloy). On Spher-A-Cap also crack bypassed γ particle near initiation of crack but later went through it.

Spher-A-Cap is shown in Figure 2. In some samples, two cracks initiated, one in the γ_1 phase and the other in the γ_2 phase. The crack that was initiated in the γ_2 phase was stopped from further propagation when it encountered a γ particle. This suggests that γ particle is a strong phase and that although the γ_2 phase is weaker than the γ_1 phase, this difference in strength between them may not be great.

In Dispersalloy and the experimental alloy there are two unreacted particles, Ag-Sn particles and Ag-Cu particles. A Sn-Cu phase (also known as the reaction ring) formed around the Ag-Cu particle. The matrix consisted of the Ag-Hg phase (γ_1) and some microporosities. The same phases were observed in the experimental alloy. The main difference between their microstructures

was that Ag-Sn particles in the experimental alloy were spherical in shape (Fig 3).

In Dispersalloy and the experimental alloy, the crack initiated in the Ag-Hg phase in all of the samples except one where the crack initiated through the Ag-Sn phase because this was the only choice. This suggests that the Ag-Cu phase is more resistant to failure than the Ag-Sn phase. As the crack mostly initiated in the Ag-Hg phase regardless of the phases represented on the tension side of the amalgam beam, this may indicate that the difference in strength between the γ , Ag-Cu, Sn-Cu, and Ag-Hg phases are great, with the Ag-Hg phase being the weakest.

Conclusions

The phases through which a crack initiates is dependent on the distribution of the

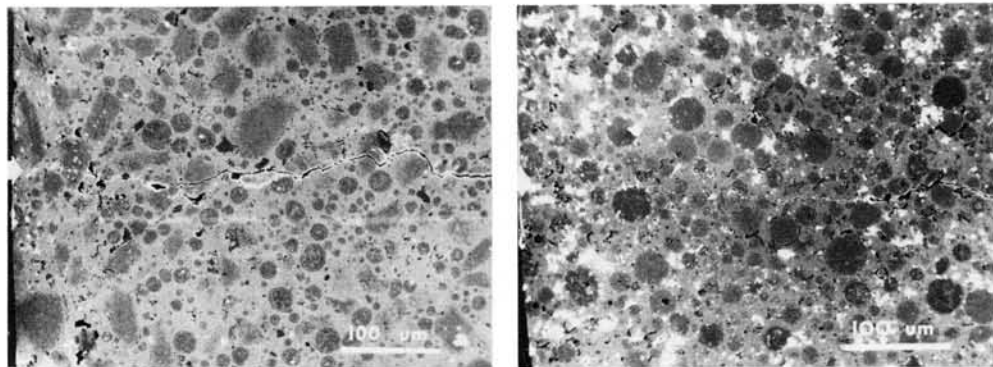


FIG 3.—Photomicrograph of Dispersalloy (left) and experimental alloy (right). Arrows indicate initiation of cracks.

phases on the tension side of the amalgam beam.

The unreacted Ag-Sn phase is the most resistant to failure in Optaloy and Spher-A-Cap.

The Ag-Cu phase is the most resistant to failure in Dispersalloy and the experimental alloy.

The amount of force necessary to initiate a crack in all the dental amalgam alloys studied was dependent on the age of the amalgam.

References

1. ASGAR, K., and SUTFIN, L.V.: Brittle Fracture of Dental Amalgam, *J Dent Res* 44: 977, 1965.
2. ALLEN, F.C.; ASGAR, K.; and PEYTON, F.A.: Microstructure of Dental Amalgam, *J Dent Res* 44: 1002-1012, 1965.
3. YOUNIS, O.: Forces Needed to Initiate a Crack in Dental Amalgams, MS thesis, University of Michigan, School of Dentistry, 1974.
4. GUENTHER, W.C.: *Analysis of Variance*, Englewood Cliffs, NJ: Prentice-Hall, Inc., 1964.
5. ASGAR, K.: Behavior of Copper in Dispersed Amalgam Alloy, abstracted, *IADR Program and Abstracts of Papers*, No. 15, 1971.
6. MAHLER, D.B.: Microprobe Analysis of a Dispersant Amalgam, abstracted, *IADR Program and Abstracts of Papers*, No. 14, 1971.
7. ASGAR, K.: Amalgam Alloy with a Single Composition with Behavior Similar to Dispersalloy, *J Dent Res* 53 (Special Issue): Abstract No. 23, 1974.
8. FAIRHURST, C.W.: Crystallography of Dental Amalgam, PhD dissertation, Northwestern University, 1966.
9. WING, G., and RYGE, G.: Setting Reactions of Spherical-Particle Amalgams, *J Dent Res* 44: 1325-1333, 1965.