

AIAA'88

AIAA-88-2926

**Mars Missions with the MICF Fusion
Propulsion System**

T. Kammash and D.L. Galbraith, The
University of Michigan, Ann Arbor,
MI

**AIAA/ASME/SAE/ASEE 24th JOINT
PROPULSION CONFERENCE**

July 11-13, 1988/Boston, Massachusetts

MARS MISSIONS WITH THE MICF FUSION
PROPULSION SYSTEM

T. Kammash and D. L. Galbraith
The University of Michigan
Ann Arbor, MI 48109

Abstract

The potential of the Magnetically Insulated Inertial Confinement Fusion (MICF) reactor as a propulsion scheme is assessed using a quasi one-dimensional, time-dependent set of equations to describe the plasma dynamics in the system. The target in this system consists of a spherical pellet whose inner wall is coated with deuterium-tritium (DT) fusion fuel, and the plasma is formed as a result of wall ablation by an incident laser beam that enters the pellet through a hole. In contrast to implosion-type inertial fusion, the plasma lifetime in MICF is much longer due to the fact that it is dictated by the shock speed in the metal shell that surrounds the fuel wall, rather than by the sound speed in the plasma itself. By allowing the plasma at the end of the fusion burn to adiabatically expand into an expansion chamber then exhausting it through a magnetic nozzle we determine the propulsion capabilities of such a system. For a reasonable pellet and chamber design, and an input laser energy of 3 MJ we find that the system produces an energy gain factor of 302, a specific impulse of 1.25×10^4 seconds, a jet power of 264 MW and a thrust of 336 kilonewtons when a repetition rate of 100 per second is used. We apply these results to a vehicle with dry mass of 738 MT for a round trip to Mars and find that such a journey can be made in about 10 days.

I. Introduction

In a previous paper¹ we introduced a fusion concept called the "Magnetically Insulated Inertial Confinement Fusion" (MICF) reactor as a potentially attractive propulsion device for deep space missions and interplanetary travel. This system brings together the favorable aspects of both magnetic and inertial fusions in that physical containment of the burning plasma is provided by a metallic shell, while insulation of its thermal energy from material walls is provided by a strong, self-generated magnetic field as illustrated in Fig. 1. In contrast to conventional, implosion-type inertial confinement systems, MICF

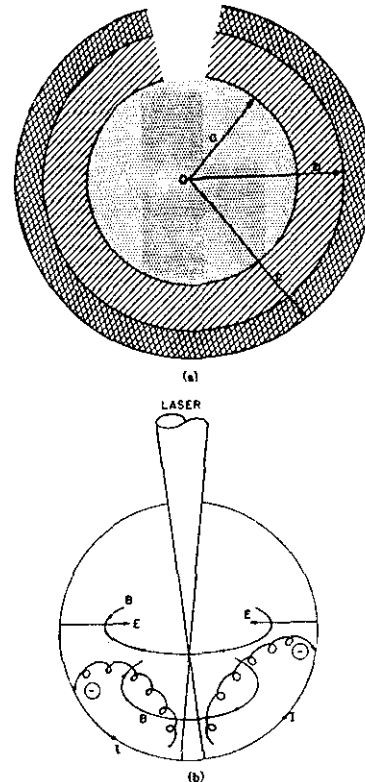


FIG. 1. Schematic diagram of (a) the reactor chamber and (b) process of magnetic field generation.

utilizes a plasma that is formed inside the target pellet as a result of ablation of the fuel-coated inner wall by a laser beam that enters the target through a hole. Since the confinement time in this system is dictated by the sound speed in the shell (as opposed to the sound speed in the plasma) a significant enhancement ($\sim 10^2$) of the lifetime of plasma energy in MICF is achieved over implosion-type systems due in part to the large atomic mass of the metal shell and in part due to the reduction of the shell temperature arising from the thermal insulation provided by the magnetic field. Moreover, the coupling of laser energy to the plasma is more efficient in MICF since the energy is put directly into the plasma rather than in the imploding pusher as it is in implosion-type inertial fusion. The so-called Rayleigh-Taylor instability which has

hampered conventional inertial fusion approaches does not arise in MICF due to the fact that in the magnetically insulated inertial fusion scheme the light fluid (the plasma) is supported by the heavier fluid (the shell) against the gravitational force associated with the plasma acceleration; a situation known to be stable. Finally, a major benefit of this scheme lies in the fact that the expansion speed of the hot core is further reduced by the continuously ablated plasma from the solid fuel toward the central region. Since the ignition condition is dictated by the expansion speed of the hot core it is evident that a significant reduction in this speed can allow for ignition at smaller input energies, perhaps on the order of few megajoules. Clearly, the most important figure of merit of any energy producing system is the energy multiplication or gain factor (Q) which denotes the ratio of the energy produced by the fusion reactions to the energy put into the plasma to heat it to thermonuclear temperatures. A Q-value of unity represents a breakeven condition, and large Q-values are needed especially in systems where a measurable amount of the power produced is required to operate the system itself. In the next section we present a brief analysis of the dynamics of MICF and its performance as a propulsion device.

II. Plasma Dynamics in MICF

In order to fully assess MICF's propulsive capability we utilize a quasi one-dimensional, time-dependent set of particle and energy balance equations for the various species that constitute the plasma in this device. We use a deuterium-tritium (DT) fuel cycle and allow for two populations of the alpha particle generated by this fusion reaction, a fast alpha population born at 3.5 MeV energy, and a thermal alpha population characterized by a Maxwellian distribution at an appropriate temperature. The details of the analysis can be found elsewhere,^{2,3} but for the purposes of this paper it is sufficient to note that the model we employ consists of a laser-ablated central region that is separated by a magnetic field from a "halo" region which is adjacent to the solid fuel wall. A more realistic, but significantly more complex, model would consider the halo region to be surrounded by an ionized metal region which itself is adjacent to a non-ionized metal shell. We defer the adoption of such a model to a future calculation, but for the present we choose the DT plasma to consist of three thermal species, namely the fuel ions, electrons and thermal alphas in addition to an arbitrary number of fast alpha groups. We consider each species to be an ideal gas for which we draw upon thermo dynamics to write the energy

balance equation. The particle balance equation for the fuel ions (which we select to be one with a mass equal to the average masses of the deuterium and tritium) is given by

$$\frac{d}{dt} \left\{ \frac{4}{3} \pi r^3 n_f \right\} = - \frac{4}{3} \pi r^3 \left\{ \frac{1}{2} n_f^2 \langle \sigma v \rangle_f \right\} + 4 \pi r^2 \{ \Gamma_r - \Gamma_f \} \quad (1)$$

where n_f denotes the ion density, $\langle \sigma v \rangle_f$ the velocity averaged fusion reaction cross section which is temperature dependent, Γ_r the particle flux for the refueling fuel ions which cross the magnetic field from the halo region to the core plasma and Γ_f represents the flux in the opposite direction. In the above equation, the first term on the right hand side reflects the loss of ions due to the fusion reaction while the last term represents the source term arising from the net particle flux entering the core. The energy balance equations for the fuel ions can be expressed by

$$\begin{aligned} \frac{d}{dt} \left\{ \frac{4}{3} \pi r^3 n_f T_f \right\} + 4 \pi r^2 n_f T_f \frac{dr}{dt} = \frac{4}{3} \pi r^3 \\ \left\{ \frac{3}{2} \frac{n_f n_e}{(n\tau)_{ef}} (T_e - T_f) + \frac{3}{2} \frac{n_f n_\alpha}{(n\tau)_{\alpha f}} (T_\alpha - T_f) + n_f \sum_{k=1}^K n_k \left(\frac{dE_k}{dt} \right) \right. \\ \left. - \frac{3}{4} n_f^2 \langle \sigma v \rangle_f \right\} + 4 \pi r^2 \{ W_r - W_f \} \quad (2) \end{aligned}$$

The left hand side Eq. (2) represents the change in the plasma thermal energy including the spherical expansion term. The first term on the right-hand side denotes the energy exchange between the electrons and fuel ions and is characterized by the energy exchange constant $(n\tau)_{ef}$,⁴ the second term represents the exchange with the thermal alpha particles, while the third term reflects the rate at which the k'th fast alpha group loses energy to the fuel ions. The fourth term denotes the energy removed from the ions due to their participation in the fusion reaction, while the last term represents the net energy flux between the refueling ions and ions escaping from the core. Similar equations are given for the other species in both regions but will not be reproduced here in the interest of space.

As we noted earlier, the plasma in the core of MICF is kept away from the solid wall of the pellet by a strong magnetic field. Particle and energy transport take place in both directions across this field as we have observed in Eqs. (1) and (2). In the absence of turbulence such diffusion takes place classically, i.e. as a result of Coulomb collisions between the species. We ignore this effect for the fast alpha particles since they tend to slow down more rapidly than they

diffuse across the field. Moreover, we postulate for the purposes of this calculation that the bremsstrahlung emitted by the hot core electrons get absorbed primarily in the solid fuel wall, cause it to ablate, and contribute to the formation of the halo region. It is likely, however, that measurable photoionization can take place in the metal wall resulting in significant contribution to the back pressure exerted on the core plasma but, once again, these details will be left to future studies. For the problem at hand we contend that the radiation emitted by the hot electrons is the sole cause of the refueling mechanism, and that for each photon absorbed a single electron escapes from the wall without giving up an appreciable portion of its energy. Electrostatic effects then cause an equal number of positive ions to be emitted by the wall and join the halo region. This fueling scheme may be viewed as somewhat optimistic since in a target with reasonably thin DT wall a considerable fraction of the bremsstrahlung photons may indeed reach the metal shell and cause it to vaporize and ionize. But since, for the purposes of this paper, we are also ignoring other ablation mechanisms such as those due to ion heat wave we proceed on the assumption that the above-described fueling mechanism is adequate. The number of fast alpha groups is chosen to be ten and the results were not significantly altered when a larger number of groups was utilized.

The stability of the plasma in the various regions of MICF plays an important role in the performance of the system as a reactor. The most likely instabilities are the drift modes associated with the density and temperature gradients in the system⁵, but because the pressure is nearly constant across the transition region⁶ the only instability of concern is the density-driven electrostatic mode. The associated turbulence was incorporated in the analysis by adding a Bohm-like diffusion coefficient to represent the enhanced diffusion across the magnetic field in both directions. In many instances this turbulence results in a more efficient fueling of the hot plasma which in turn manifests itself in a higher gain factor, Q.

As an illustration of MICF's performance as a reactor we have chosen as a target a pellet with an outer radius of 0.75 cm and an inner metal shell radius of 0.375 cm. The inner radius of the solid DT fuel is 0.25 cm and thus has a thickness of 0.125 cm. For an incident laser energy of 3 MJ a hot plasma core with a density of $2.5 \times 10^{21} \text{cm}^{-3}$, and a temperature of about 32 keV is formed. Such a plasma was found to ignite resulting in a Q-value of 302, and was allowed at the end of the fusion burn to expand in a chamber of radius 10 cm with

an exhaust hole of 2.50 cm. The escape time for both the fuel ions and the metal ions is computed and it is shown that a maximum firing rate of about 2700 can be accommodated. We denote the rep rate by " ω " and choose it to be 100 for the examples we present. It has been suggested⁷ that the mass of a laser driver with 2 MJ of output energy is 262 metric tons (mT). By linear extrapolation we suggest that the mass of a 3.0 MJ laser system would be 393 mT and for a Q of 302 the specific power of the system would be about 230 watts per gram--a very attractive value indeed.

III. MICF as a Propulsion Device

We proceed to examine the capabilities of MICF as a propulsion system. For that purpose we consider the case of the pellet design given in Table 1.

Table 1.
Pellet Design for Propulsion

Inner radius of solid fuel	0.25 cm
Outer radius of solid fuel	0.375 cm
Outer radius of metal shell	0.750 cm
Hot plasma core density	$2.5 \times 10^{21} \text{cm}^{-3}$
Hot plasma core temperature	32 keV
Input energy	3 MJ
Gain factor	302
Total energy output	906 MJ
Charged Particle Energy	181 MJ
Total mass of pellet	23.63 gm

If such a pellet is housed in a combustion chamber with a radius of 10 cm and an opening of 2.50 cm which may be viewed as part of a magnetic nozzle with near perfect efficiency, then by allowing the plasma (i.e. the charged particles) to adiabatically expand at the end of the fusion burn and then escape through the nozzle we can compute, as noted earlier, the exhaust time which in turn dictates the maximum repetition rate allowed. We have seen that $\omega = 100$ is well within that limit. The propulsion capability of MICF can be estimated from the usual propulsion parameters that are determined from the standard rocket equations². These are specific impulse, I_{sp} , the thrust, F, and/or the jet power which for the case at hand are summarized in Table 2.

Table 2.
Propulsion Parameters for an MICF System

Ion exhaust velocity	122 km/sec
Specific impulse, I_{sp}	$1.25 \times 10^4 \text{sec}$
Repetition rate, ω	$\leq 2705 \text{sec}^{-1}$
Thrust, F	$0.34 \omega \text{ K.Newtons}$
Jet power, P_{jet}	$2.64 \omega \text{ MW}$

IV. Mars Missions

As an interesting application to MICF as a propulsion device we consider a round trip from earth to Mars using the vehicle alluded to earlier. Without payload, the vehicle including the driver (lasers, radiators, optics, etc), the thrust chamber, and the overhead which includes the payload shield, and other components has a mass of 617 mT⁷. If we consider a piloted mission that includes a science payload and other relevant cargo of 252 mT, then the total vehicle mass would be 869 mT. Such a payload mission starting from LEO and using chemical propulsion and aerodynamic braking, and utilizing a split option trajectory profile⁸ will take about a year including a one month stay on that planet.

For our case we will consider a round trip, continuous burn, acceleration/ deceleration trajectory profile which assumes constant I_{sp} , F , and P_{jet} operation, and take for the dry mass of the vehicle 869 mT that includes a payload of 252 mT. The equations that describe the transit times for the outbound and return legs of the journey, τ_{RT} , from earth (E) to Mars (M), along with the distances traveled, D_{EM} and D_{ME} are given by⁹

$$\tau_{RT} = \tau_{EM} + \tau_{ME} = \frac{I_{sp}}{F/W_f} \left(\frac{1}{\alpha\beta} - 1 \right) \quad (3)$$

$$D_{EM} = \frac{g I_{sp}^2}{F/W_f} \left(\frac{1}{\beta} \right) \left(\frac{1}{\sqrt{\alpha}} - 1 \right)^2 \quad (4)$$

$$D_{ME} = \frac{g I_{sp}^2}{F/W_f} \left(\frac{1}{\sqrt{\beta}} - 1 \right)^2 \quad (5)$$

$$\frac{1}{\alpha} = \frac{M_i}{M_b}, \frac{1}{\beta} = \frac{M_b}{M_f}, M_b = M_f + M_p^{B \rightarrow A} \quad (6)$$

where $W_f = gM_f$ is the dry weight of the vehicle, M_i , the initial mass and M_p is the propellant mass. Using the linear distance from earth to Mars as 0.52 AU (1 Astronomical Unit $\cong 1.5 \times 10^{11}$ m) we calculate α and β from Eqs. (4) and (5) which upon substitution in Eq. (3) yields the round trip time. Alternatively, the trip time can be computed from M_p/\dot{M}_p where \dot{M}_p represents the rate of flow of the propellant obtained by multiplying the pellet mass shown in Table 1 by the rep rate, ω , which we take to be 100. For purposes of comparison we repeat the calculation for a round trip to Jupiter using the same vehicle and payloads. The results are shown in Table 3.

V. Conclusions

We have demonstrated in this study the unique capabilities of the Magnetically Insulated Inertial Confinement Fusion reactor as a propulsion system. A detailed investigation of the physics issues has revealed that fusion ignition can occur in MICF at moderate input energies, and very large gain factors can be obtained which translate into large exhaust velocities and very high specific impulses. In addition, large thrusts and jet powers can be generated due to the presence of the metallic shell that surrounds the fusion fuel in the target pellets, and no serious confinement issues arise from such an arrangement. Although no effort was made to optimize the system, it is shown that with MICF propulsion round trip journeys to Mars and Jupiter can be made in 11 and 49 days respectively with substantial payloads on board.

Table 3. MICF Rocket Performance

=====					
$I_{sp} = 1.25 \times 10^4$ sec, $\dot{M}_p = 2.363$ Kg/sec, $M_f = 869$ mT					
Mission	D_{AB} (AU)	$R_M = 1/\alpha\beta$	M_i (mT)	M_p (mT)	τ_{RT} (days)
Mars	0.52	3.58	3111	2242	11
Jupiter	4.20	12.44	10,810	9941	49
=====					

References

1. T. Kammash and D. L. Galbraith, "A Novel Fusion Scheme for Space Propulsion," AIAA Paper 87-2154, June (1987).
2. T. Kammash, D. L. Galbraith, "A Fusion Reactor for Space Applications," Fusion Technology 12, 11 (1987).
3. T. Kammash and D. L. Galbraith, "Reactor Potential of the Magnetically Insulated Inertial Confinement Fusion System," Proc. Int. Conf. Fusion Energy and Plasma Physics, Rio de Janeiro, August (1987).
4. T. Kammash, Fusion Reactor Physics, Principles and Technology, Ch. 4, Ann Arbor Science Publishers, Ann Arbor, MI (1975).
5. A. Y. Aydemir, et al., "Linear and Nonlinear Description of Drift Instabilities in a High Beta Plasma," Phys. Fluids 30, 3038 (1987).
6. A. Hasegawa, et al., "Magnetically Insulated Inertial Fusion: A New Approach to Controlled Thermonuclear Fusion," Phys. Rev. Letters 56, 139 (1986).
7. R. A. Hyde, "A Laser Fusion Rocket for Interplanetary Propulsion," Lawrence Livermore National Laboratory Report UCRL-88857 (1983).
8. B. Palaszewski, "Advanced Propulsion for Manned Lunar and Mars Missions," Jet Propulsion Laboratory, Nov. (1987).
9. S. K. Borowski, "A Comparison of Fusion/Anti-proton Propulsion Systems for Interplanetary Travel," AIAA paper 87-1814, June (1987).