

TECHNOLOGY REPORT

Efficient, Specific, Developmentally Appropriate cre-Mediated Recombination in Anterior Pituitary Gonadotropes and Thyrotropes

María Inés Pérez-Millán, Michael G. Zeidler, Thomas L. Saunders, Sally A. Camper,* and Shannon W. Davis

Department of Human Genetics, University of Michigan, Ann Arbor, Michigan

Received 1 October 2012; Revised 30 July 2013; Accepted 5 August 2013

Summary: Tissue-specific expression of *cre* recombinase is a well-established genetic tool to analyze gene function, and it is limited only by the efficiency and specificity of available *cre* mouse strains. Here, we report the generation of a transgenic line containing a *cre* cassette with codon usage optimized for mammalian cells (*iCre*) under the control of a mouse glycoprotein hormone α -subunit (α GSU) regulatory sequences in a bacterial artificial chromosome genomic clone. Initial analysis of this transgenic line, *Tg(α GSU-*iCre*)*, with *cre* reporter strains reveals onset of *cre* activity in the differentiating cells of the developing anterior pituitary gland at embryonic day 12.5, with a pattern characteristic of endogenous α GSU. In adult mice, *α GSU-*iCre** was active in the anterior lobe of the pituitary gland and in the cells that produce α GSU (gonadotropes and thyrotropes) with high penetrance. Little or no activity was observed in other tissues, including skeletal and cardiac muscle, brain, kidney, lungs, testis, ovary, and liver. This *α GSU-*iCre** line is suitable for efficient, specific, and developmentally regulated deletion of floxed alleles in anterior pituitary gonadotropes and thyrotropes. *genesis* 51:785–792. © 2013 Wiley Periodicals, Inc.

Key words: transgenic mouse; chorionic gonadotropin alpha subunit; *Cga*; alpha-GSU; site specific recombination; BAC

INTRODUCTION

During the development of the mammalian anterior pituitary gland, the distinct hormone-producing cell types emerge and organize into networks (Budry *et al.*, 2011; Davis *et al.*, 2011). Initially, precursor cells proliferate and differentiate into five different endocrine cell

types that are typified by the hormones that they produce: corticotropes produce adrenocorticotropin (ACTH), thyrotropes produce thyroid stimulating hormone (TSH), somatotropes produce growth hormone (GH), lactotropes produce prolactin (PRL), and gonadotropes produce luteinizing hormone (LH) and follicle-stimulating hormone (FSH). In mouse embryonic development, hormone producing cell types become detectable over a period spanning embryonic days 12.5 (e12.5) to e17.5 (Japon *et al.*, 1994). Genetic and biochemical studies have identified several of the transcription factors that are crucial for cell lineage determination and differentiation and cell-specific hormonal gene expression (Marcil A *et al.*, 2003) [rev in (Zhu and Rosenfeld, 2004)]. Both gonadotropes and thyrotropes express a common α -glycoprotein subunit (α GSU), which heterodimerizes with separate β -subunits of the glycoprotein hormones, LH, FSH, and TSH, to give the biologically active hormones. α GSU is the first pituitary hormone component detected during development. The earliest detectable signal is present

Current Address for Shannon W. Davis: Department of Biological Sciences, University of South Carolina, 503 Coker Life Sciences, 715 Sumter St, Columbia, SC 29208.

* Correspondence to: Sally A. Camper, Department of Human Genetics, University of Michigan, Ann Arbor, MI 48109-5618.
E-mail: scamper@umich.edu

Contract grant sponsor: NICHD, Contract grant numbers: R01-30428 and R01-34283; Contract grant sponsor: International Endocrine Scholar Program (MIPM); Contract grant sponsor: Transgenic Animal Model Core, Contract grant number: NIH grant numbers: CA46592, AR20557, and DK34933

Published online 2 September 2013 in
Wiley Online Library (wileyonlinelibrary.com).
DOI: 10.1002/dvg.22425

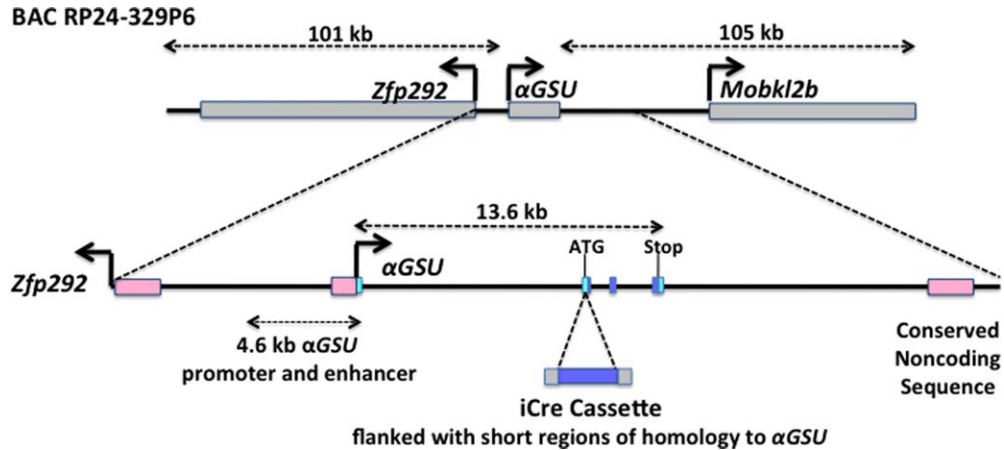


FIG. 1. Structure of the BAC Tg(α GSU-*iCre*) transgene. The position of the α GSU gene within the RP24–329P6 BAC is indicated, together with *Zfp292* (80 kb) and a portion of the *Mobkl2b* gene (60 kb/from 208 kb). The exon-intron structure of the α GSU gene is shown. The first exon is noncoding (light blue) and four exons are coding (blue rectangles). The recombination targeted the second α GSU exon, inserting the *iCre* coding sequence at the ATG of the α GSU gene and using the α GSU gene polyadenylation sequence. The 4.6 kb promoter used for the previous α GSU-*Cre* transgenic mouse is indicated.

at e11.5 in the rostral and ventral most region of Rathke's pouch (Burrows *et al.*, 1996). Deletion of this gene, officially known as chorionic gonadotropin alpha or *Cga*, revealed that it is necessary after birth for stimulation of thyroid and gonadal growth and function (Kendall *et al.*, 1991).

The *cre-loxP* system has become a powerful tool to study the effects of gene deletion in a particular cell type or tissue, especially when conventional gene targeting by homologous recombination in embryonic stem cells results in an early lethal phenotype. To study the pituitary specific effects of gene deletion, we previously generated transgenic mice that express the *cre* recombinase under the transcriptional control of the mouse α GSU gene (*Cga*). A sequence of 4.6 kb of the mouse α GSU gene promoter and enhancer (*B6;SJL-Tg(Cga-cre)^{3Sac/J}*) targets the gonadotropes and thyrotropes, as well as the other hormone-producing cells of the adult anterior pituitary gland (Cushman *et al.*, 2000). These sequences are sufficient to confer developmentally regulated and hormone-responsive gene expression in the pituitary gland, and they have been used successfully to create pituitary-specific deletions of several genes (Bliss *et al.*, 2009; Charles *et al.*, 2006; Cushman *et al.*, 2000; Kendall *et al.*, 1994). Ectopic *cre* activity, however, is observed in the ovary and in the skeletal and cardiac muscle of 4.6 kb α GSU transgenic mice, limiting the usefulness of this transgene for some purposes (Uhlenhaut *et al.*, 2009).

To generate α GSU-*Cre* transgenic mice that more accurately recapitulate endogenous α GSU gene expression, we used homologous recombination in *E. coli* to introduce improved *cre* recombinase (*iCre*) coding sequences into a bacterial artificial chromosome (BAC) containing the mouse α GSU gene. A transgenic line car-

rying this construct conferred highly penetrant *cre* mediated excision of floxed reporter genes and had minimal ectopic expression. This suggests that regulatory DNA sequences present in the BAC confer more accurate α GSU gene expression than promoter-proximal sequences alone.

RESULTS AND DISCUSSION

Cga, a single gene in the mouse genome, encodes α GSU, and is flanked by *Zfp292* and *Mobkl2b* on mouse chromosome 4. Using recombineering in *E. coli*, we inserted an improved *cre* expression cassette (*iCre*) into a 228 kb mouse α GSU genomic BAC clone in exon 1 at the translation start site (Fig. 1). The *iCre* has reduced CpG content relative to the prokaryotic coding sequence, thereby reducing the chances of epigenetic silencing in mammals (Shimshek *et al.*, 2002). The engineered BAC was injected into the pronucleus of fertilized eggs from a C57BL/6J cross with B6D2F1 mice to generate α GSU-*iCre* BAC transgenic mice. We identified a founder transgenic mouse containing the complete BAC using polymerase chain reaction (PCR) genotyping with primers for the *iCre* insertion and the BAC vector backbone. This line Tg(*Cga-iCre*)^{Sac961} is referred to here as α GSU-*iCre* for simplicity.

We determined that the transgene does not affect the expression levels of endogenous α GSU using quantitative PCR (data not shown). To assess the specificity, efficiency, and in vivo activity of the α GSU-*iCre* BAC transgene, transgenic mice were crossed with two different *cre*-reporter transgenic mice that express a reporter gene only after excision of a floxed stop sequence: Rosa26-LacZ and Rosa26-EYFP (officially B6;129S4-*Gt(ROSA)26Sor^{tm1Sor}/J* and B6.Cg-*Gt(ROSA)26Sor^{tm2(CAG-EYFP)Hze}/J*)

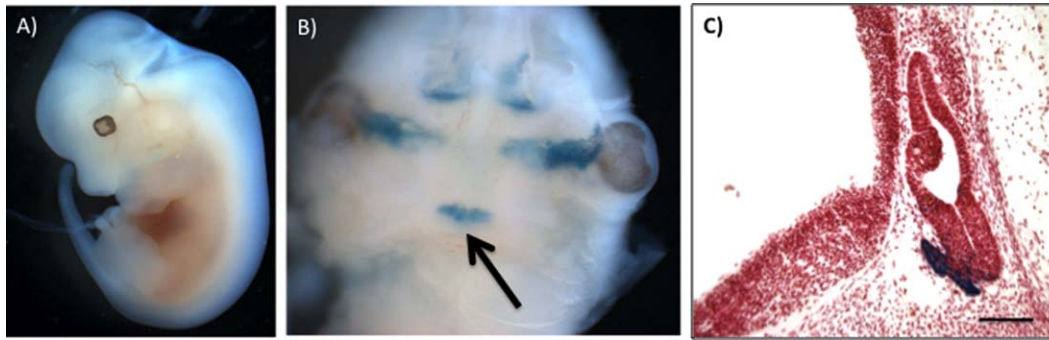


FIG. 2. Expression of the BAC Tg(α GSU-*iCre*) transgene in the developing pituitary gland at e12.5. X-Gal stained α GSU-*iCre*; *Rosa26LacZ* double transgenic embryos reveal activity of the α GSU-*iCre* transgene during development. Panel A: Whole X-gal stained double transgenic embryo (e12.5). Panel B: The mandible was removed from the embryo in panel A to visualize the pituitary (arrow). Panel C: Sagittal cryosection of X-gal stained double transgenic embryo showing expression in the forming anterior lobe of the pituitary. Section is counterstained with neutral red. Magnification bar represents 100 μ m.

respectively). Both α GSU-*iCre* female and male mice were fertile.

The DNA recombination pattern in the developing pituitary and adult tissues was analyzed by crossing α GSU-*iCre* mice with the *Rosa26-LacZ cre* reporter line (Friedrich and Soriano, 1991; Soriano, 1999; Zambrowicz *et al.*, 1997). In transgenic animals carrying both *Rosa26-LacZ* and α GSU-*iCre* transgenes, the Cre recombinase catalyzed the removal of the stop sequence, leading to β -galactosidase production. X-Gal stained α GSU-*iCre*; *Rosa26LacZ* double transgenic embryos showed that recombination occurred in the developing pituitary gland at embryonic day 11.5 (e11.5), in a few cells (data not shown). This is consistent with the developmental timing of endogenous α GSU expression (Kendall *et al.*, 1991). By e12.5 essentially all of the cells at the ventral aspect of the pouch are stained, with a pattern of expression characteristic of endogenous α GSU expression (Fig. 2). Little or no staining was detected in the bodies of whole mount stained embryos, while the 4.6 kb α GSU-*cre* transgene was active in the somites at e12.5 and other ectopic sites (Cushman *et al.*, 2000). After removing the mandible, transgene activity is obvious in the developing pituitary gland and in other areas that express endogenous α GSU: the mesenchyme adjacent to the eye and the olfactory epithelium (Kendall *et al.*, 1991). Sagittal sections revealed X-gal staining confined to the expected rostral, ventral area of Rathke's pouch where differentiated cells expressing α GSU are appearing. At e11.5 limited β -galactosidase activity was detected (data not shown) (Cushman *et al.*, 2000). This is consistent with the developmental timing of endogenous α GSU expression (Kendall *et al.*, 1991). These results show that the new α GSU-*iCre* BAC transgenic mouse line mediates recombination much more specifically than the previous line using only 4.6 kb of regulatory sequences.

The tissue specificity of the α GSU-*iCre* transgene was analyzed by X-Gal staining of cryosections from adult tissues (2 mo old) from α GSU-*iCre*; *Rosa26LacZ* double transgenic mice. *Cre* transgene activity was detected in the pituitary of 2 mo old adult mice, with no activity in inappropriate tissues such as muscle, kidney, lung, testis, and liver (Fig. 3). A few rare, positive cells were detected in the brain, and low levels of activity were noted in some follicles of the ovary (Fig. 3). Because of the potential for multiple organs in the hypothalamic-pituitary-gonadal axis to be affected in gene deletion studies using the α GSU-*cre*, we characterized *Cre* expression in the ovary using a different reporter mouse, *Gt(ROSA)26Sor^{tm4(ACTB-tdTomato,-EGFP)LoxP/J}*, which switches from red fluorescent tdTomato to green fluorescent eGFP upon recombination. Only a few scattered cells in some, but not all ovaries, were detected using either reporter mouse. Although this may affect the results of gene deletion, if the gene of interest is expressed in the ovary, the α GSU-*iCre* BAC transgenic line greatly improves pituitary specificity over previously available reagents and more accurately reflects the expression of the endogenous α GSU gene.

To study the pituitary cell specificity, the α GSU-*iCre* transgenic mice were crossed with *Rosa26-EYFP cre* reporter line. In this reporter mouse line, cre excision of the *loxP*-flanked STOP fragment permits EYFP gene expression (Madisen *et al.*, 2010) that can be detected by antibody staining against EGFP. Cell specificity was assessed by following EGFP immunohistochemistry (IHC) with staining for individual antibodies specific to each of the pituitary hormones (α GSU, TSH β , LH β , FSH β , GH, PRL, and ACTH). IHC on pituitary cryosections from α GSU-*iCre*; *Rosa26EYFP* double transgenic mice reveals high levels of α GSU-*iCre* activity in the anterior lobe of the pituitary, with no expression in the intermediate and posterior lobe (Fig. 4A). Double IHC

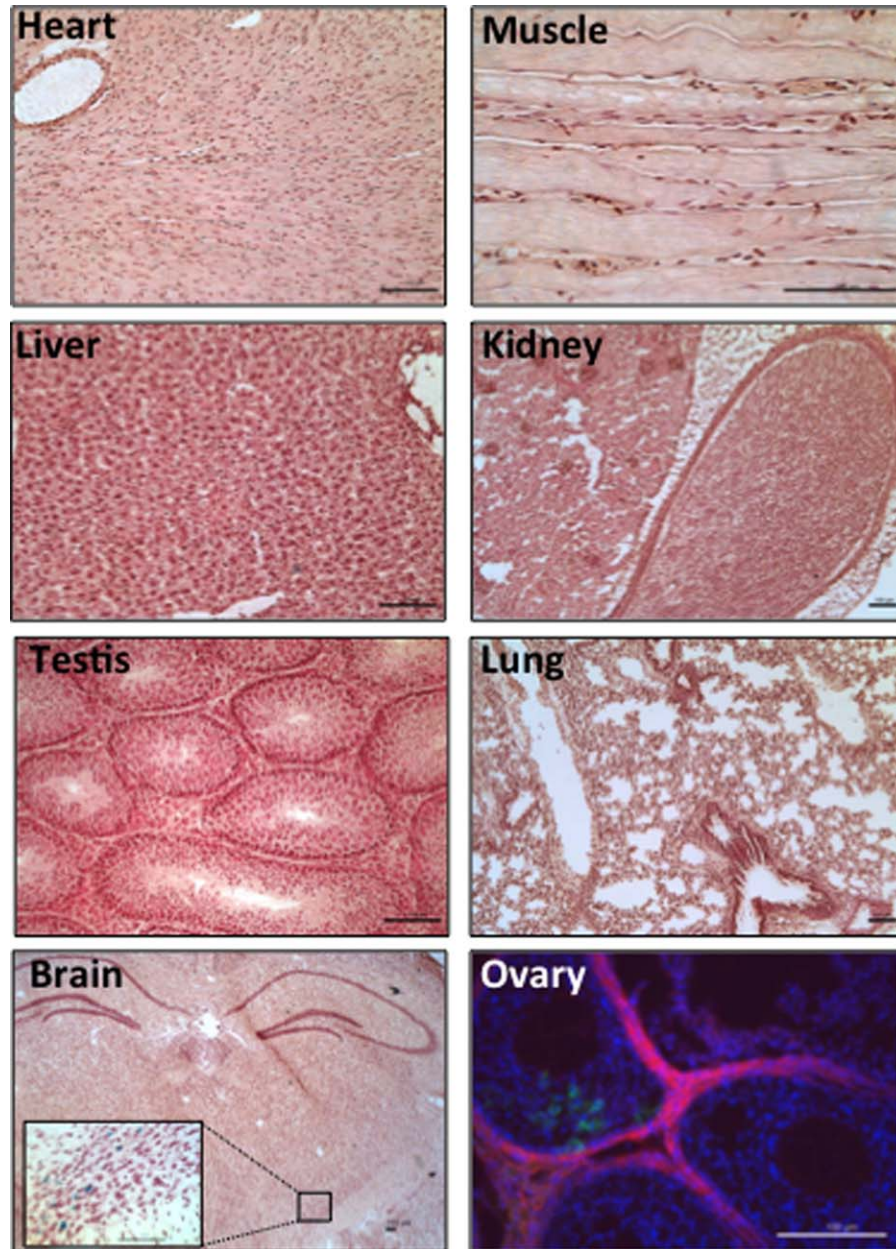


FIG. 3. *Tg(αGSU-iCre)* transgene is active primarily in the pituitary gland. Analysis of *cre* activity in adult tissues was examined by X-Gal staining of *αGSU-iCre;Rosa26LacZ* double transgenic mice. Cryo sections were counterstained with neutral red. For the ovary, *Tg(αGSU-iCre)* mice were crossed with the double-fluorescent *cre* reporter *mTmG* line, that expresses membrane targeted tandem dimer tomato (mT) prior to *cre* mediated excision and membrane targeted green fluorescent protein (mG) after excision (Muzumdar *et al.*, 2007). Ovary sections were counterstained with DAPI (blue). All magnification bars represent 100 μ m.

for eGFP and α GSU reveals that most α GSU positive cells undergo *cre* recombination (Fig. 4B). Quantitation of hormone positive cells for EGFP expression revealed a high level of penetrance in gonadotropes and thyrotropes with a low level of expression in other pituitary cell types (Fig. 5, Table 1). About 79% of α GSU producing cells are marked and most thyrotropes and gonadotropes were marked. EYFP IHC was detected in cells positive for TSH β (96%), LH β (67%) and FSH β (91%).

Less than 10% of cells positive for other hormones express EYFP: ACTH (8%), GH (6%) or PRL (7%). This may not represent ectopic expression because α GSU is detectable in a variety of pituitary cell types (Childs, 1991; Saeger *et al.*, 2007; Seuntjens *et al.*, 2002).

In summary, we have generated an improved *αGSU-iCre* transgenic mouse using BAC recombineering. Compared to the original *αGSU-cre* transgenic mouse, the new line mediates recombination in the pituitary

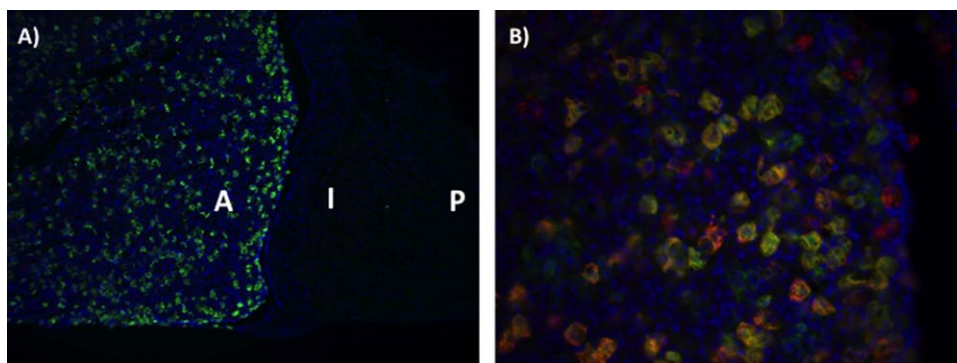


FIG. 4. Expression of the BAC Tg(α GSU-*iCre*) transgene in the adult pituitary gland. α GSU-*iCre*; *Rosa26-EYFP* double transgenic mouse reveals a high level of the α GSU-*iCre* activity in the anterior lobe of the pituitary, with no expression in the intermediate and posterior lobe. Panel A: Pituitary cryo section of a α GSU-*iCre*; *Rosa26-EYFP* double transgenic mouse stained with EGFP antibody. Panel B: Double immunohistochemistry analysis with antibody against EGFP (green) and α GSU (red) in pituitary cryosections from α GSU-*iCre*; *Rosa26-EYFP* mice. Cell nuclei were stained with DAPI (blue). A, anterior lobe; I, intermediate lobe; P, posterior lobe.

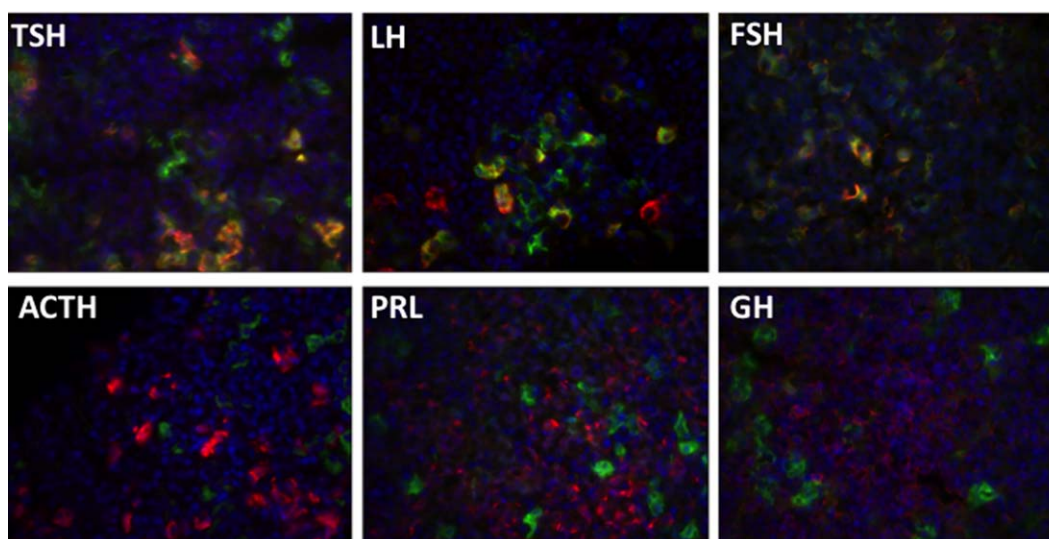


FIG. 5. Tg(α GSU-*iCre*) is specific for thyrotropes and gonadotropes. Adult pituitary cryo sections from mice doubly transgenic for Tg(α GSU-*iCre*) and *Rosa26EYFP* reporter strain were stained by double immunohistochemistry with antibodies against EYFP (green) and each pituitary hormone (red). EYFP expression colocalizes with LH β , FSH β , and TSH β in pituitaries from α GSU-*iCre*; *Rosa26-EYFP* double transgenic mice; and not with ACTH, PRL, and GH. Cell nuclei were stained with DAPI (blue).

thyrotropes and gonadotropes, without broad expression in other pituitary cell types and without ectopic recombination in the heart, skeletal muscle, and other ectopic sites characteristic of the original line. It is tempting to speculate that the evolutionarily conserved noncoding sequence located 3' of the α GSU gene could have a role in generating appropriate tissue specific, developmentally regulated and cell specific expression, similar to 3' regulatory elements that have been identified for many genes (Antoniou *et al.*, 1988). BAC recombinered transgenes can be an effective and efficient approach to developing *cre* strains because identification of all the regulatory elements for accurate gene expression can be tedious, and because knock-in alleles

can create haploinsufficiency for the endogenous gene and influence the phenotype.

METHODS

BAC Transgene Construction

BAC clone RP24-329P6 containing mouse *Cga* was obtained from the BACPAC Resource Center (Oakland, California). The *iCre* clone was a kind gift of R. Sprengel (Shimshek *et al.*, 2002). To place *iCre* under the control of *Cga*, the loxP recombinase site in the pTARBAC1 BAC cloning vector (Zeng *et al.*, 2001) was replaced with an amp resistance cassette from the pTAMP plasmid as

Table 1
Anterior Pituitary Cell Specificity of Tg: α GSU-*iCre* Activity

Hormone ^a	Hormone producing cells that express EYFP (%) ^b
α GSU	79 \pm 5 ^c
TSH β	96 \pm 3 ^c
LH β	67 \pm 6 ^c
FSH β	91 \pm 4 ^c
ACTH	8 \pm 0.2 [#]
PRL	6 \pm 0.9 [#]
GH	5 \pm 0.5 [#]

^aImmunohistochemistry performed with antibodies specific to the indicated hormone.

^bThe data shown represent the mean + SEM of three mice per hormone, counting approximately 500 cells for each pituitary hormone tested.

^cDifferent from #, $P < 0.05$.

described (Lee *et al.*, 2001). A plasmid with an R6K origin of replication containing *iCre* (nucleotides 1–1056) and an *FRT-gb2-kan-FRT* cassette was assembled in Pir1 bacteria. To introduce *iCre*, a 100 bp oligonucleotide was synthesized with 20 bp of homology to the *iCre* cassette and 80 bp homology immediately downstream of *Cga* exon 2 (ENSMUSE00000177972) nucleotide 97. This primer replaced the *Cga* initiator methionine with the initiator methionine of *iCre*. A second 100 bp oligo was synthesized that contained 80 bp homology that began with intron 2 nucleotide 10 and 20 bp of homology with the *iCre* cassette. The oligos were used to PCR amplify the *iCre-FRT-gb2-kan-FRT* cassette from the donor plasmid. The PCR product was used to introduce the *iCre-FRT-gb2-kan-FRT* cassette into *Cga* exon 2 of the BAC as described above. FLPe was used to excise the FRT flanked drug selection cassette from the BAC (Lee *et al.*, 2001). Recombineered BACs were identified by pulsed field restriction enzyme mapping as described (Van Keuren *et al.*, 2009). The critical region of the BAC was completely sequenced after PCR amplifying the *Cga* exon 2 *iCre* knock-in region. Primers used to amplify the *iCre-FRT-gb2-kan-FRT* cassette were: Primer 1, which aligns to vector backbone and *Cga*: 5' TGAAAGACGGTAA GAAAGGAACTAA TCATTATTGATG TGCATCTAGAAA CTTGTTTCCCTT TTCATGGCAAGC CTGAGCTTATAT ACGAAGTTATAA GCTT 3' and Primer 2, which aligns to *iCre* and *Cga*: 5' ACAGCTGGCTTG GGTTATGACTGG TAAGCTAAGATT AACTGTTATTA TTTTTTTTTTCA TGTGCAGCTTGC AGAAGAGCTATG GTGCCAAGAAG AAGA 3', with a product size of 2330 bp.

Generation and Genotyping of Transgenic Mice

All experiments using mice were approved by the University of Michigan Committee on Use and Care of Animals. The engineered BAC (α GSU-*iCre*) was injected into the pronuclei of fertilized eggs from a C57BL/6J cross with B6D2F1 mice and the fertilized eggs were transferred into pseudopregnant foster mothers. Trans-

gene positive progeny were genotyped using PCR amplification of genomic DNA with primers that flank the junction of the α GSU promoter and the inserted *iCre* coding sequence: 5'-TGAAGCCATCTCTCTGAGCAA-3' and 5'-CACAGTCAGCAGGTTGGAGA-3', under the following conditions: 92°C for 2 min, followed by 30 cycles of 92°C for 10 s, 57°C for 30 s and 72°C for 30 s, and a final 10 min extension at 72°C. Transgene positive progeny were also genotyped using primers specific for the chloramphenicol resistance gene located in the BAC backbone to identify mice that harbor the complete BAC: 5'-TCACTACCGGGCGTATTTT-3' and 5'-GCCGATAAAACTTGTGCTT-3' and the same PCR cycling conditions.

B6;129S4-*Gt(ROSA)26Sor^{tm1Sor}*/J, B6.Cg-*Gt(ROSA)26Sor^{tm2(CAG-EYFP)Hze}*/J, and *Gt(ROSA)26Sor^{tm4(ACTB-tdTomato,-EGFP)Luo}*/J reporter mice are all available from The Jackson Laboratory, and were maintained as homozygotes.

In all the experiments, animals carried one allele of the *cre* transgene and one allele of the reporter gene, whereas controls were negative for the *cre* transgene but positive for a reporter gene.

Histology and Immunohistochemistry

Adult tissues and embryos were collected and fixed for 1 h in 4% formaldehyde in PBS. For embryos, noon of the day of the vaginal plug is designated as embryonic day 0.5. X-gal staining was performed as previously described (Brinkmeier *et al.*, 1998). After staining, embryos and adult organs were embedded in OCT (Sakura Finetek Co., Torrance, CA), and cryosectioned at 16 μ m thickness. Cryosections were counterstained for 2 min with 1% neutral red stain plus 4% sodium acetate: glacial acetic acid. Sections were mounted with xylene:permount 1:2 (Fisher) mounting media.

Immunohistochemistry for GFP and hormones was performed on 16 μ m pituitary cryosections. Frozen pituitary sections were fixed for 5 min in 4% formaldehyde and rinsed in 1 \times PBS. Immunostaining was performed using a goat polyclonal anti-GFP (Abcam) antibody overnight at 4°C, diluted 1:1000 in a blocking solution comprised of 3% normal donkey serum, 1% BSA, and 0.5% Triton-X100 in 1 \times PBS. Slides were washed three times for 5 min in 1 \times PBS, followed by 1 h incubation with biotinylated anti-goat secondary antibody (Jackson Immunoresearch). Streptavidin-Alexa 488 (Invitrogen) was added for 1 h at 1:100 dilution in 1 \times PBS. Immunostaining for the different hormones was carried out with antibodies against each of the pituitary hormones: rabbit anti- α GSU (1:50), guinea pig anti-LH β (1:100), rabbit anti-FSH β (1:50), rabbit anti-TSH β (1:200), rabbit anti recombinant PRL (1:200), monkey anti-GH (1:500), and rabbit anti-ACTH (1:150) (National Hormone and Pituitary Program, NIDDK).

Secondary detection was performed as described above using biotinylated anti-rabbit or anti-guinea antibody (Vector Laboratories) and streptavidin-Cy3 (Jackson ImmunoResearch), then washed in PBS and mounted with fluorescent mounting media and images were captured using a Retiga 2000R camera mounted on a Leica DMRB fluorescent microscope.

The α GSU-*iCre* mice will be available upon request. We recommend using them as hemizygotes since we evaluated a total of 45 mice borne from a cross of two hemizygous carriers, and none of them were homozygous; suggesting that homozygosity for the transgene is lethal.

ACKNOWLEDGMENTS

The authors acknowledge Wanda Filipiak and the late Maggie Van Keuren of the University of Michigan Transgenic Animal Model Core for preparation of the transgenic mice. They also acknowledge the many contributions that Dr. Van Keuren made to our lives and research.

LITERATURE CITED

- Antoniou M, deBoer E, Habets G, Grosveld F. 1988. The human beta-globin gene contains multiple regulatory regions: Identification of one promoter and two downstream enhancers. *EMBO J* 7:377-384.
- Bliss SP, Miller A, Navratil AM, Xie J, McDonough SP, Fisher PJ, Landreth GE, Roberson MS. 2009. ERK signaling in the pituitary is required for female but not male fertility. *Mol Endocrinol* 23:1092-1101.
- Brinkmeier ML, Gordon DF, Dowding JM, Saunders TL, Kendall SK, Sarapura VD, Wood WM, Ridgway EC, Camper SA. 1998. Cell-specific expression of the mouse glycoprotein hormone alpha-subunit gene requires multiple interacting DNA elements in transgenic mice and cultured cells. *Mol Endocrinol* 12:622-633.
- Budry L, Lafont C, El Yandouzi T, Chauvet N, Conejero G, Drouin J, Mollard P. 2011. Related pituitary cell lineages develop into interdigitated 3D cell networks. *Proc Natl Acad Sci USA* 108:12515-12520.
- Burrows HL, Birkmeier TS, Seasholtz AF, Camper SA. 1996. Targeted ablation of cells in the pituitary primordia of transgenic mice. *Mol Endocrinol* 10:1467-1677.
- Charles MA, Saunders TL, Wood WM, Owens K, Parlow AF, Camper SA, Ridgway EC, Gordon DF. 2006. Pituitary-specific *Gata2* knockout: Effects on gonadotrope and thyrotrope function. *Mol Endocrinol* 20:1366-1377.
- Childs GV. 1991. Multipotential pituitary cells that contain ACTH and other pituitary hormones. *Trends Endocrinol Metab* 2:112-117.
- Cushman LJ, Burrows HL, Seasholtz AF, Lewandoski M, Muzyczka N, Camper SA. 2000. Cre-mediated recombination in the pituitary gland. *Genesis* 28:167-174.
- Davis SW, Mortensen AH, Camper SA. 2011. Birthdating studies reshape models for pituitary gland cell specification. *Dev Biol* 352:215-227.
- Friedrich G, Soriano P. 1991. Promoter traps in embryonic stem cells: A genetic screen to identify and mutate developmental genes in mice. *Genes Dev* 5:1513-1523.
- Japon MA, Rubinstein M, Low MJ. 1994. In situ hybridization analysis of anterior pituitary hormone gene expression during fetal mouse development. *J Histochem Cytochem* 42:1117-1125.
- Kendall SK, Gordon DF, Birkmeier TS, Petrey D, Sarapura VD, O'Shea KS, Wood WM, Lloyd RV, Ridgway EC, Camper SA. 1994. Enhancer-mediated high level expression of mouse pituitary glycoprotein hormone alpha-subunit transgene in thyrotropes, gonadotropes, and developing pituitary gland. *Mol Endocrinol* 8:1420-1433.
- Kendall SK, Saunders TL, Jin L, Lloyd RV, Glode LM, Nett TM, Keri RA, Nilson JH, Camper SA. 1991. Targeted ablation of pituitary gonadotropes in transgenic mice. *Mol Endocrinol* 5:2025-2036.
- Lee EC, Yu D, Martinez de Velasco J, Tessarollo L, Swing DA, Court DL, Jenkins NA, Copeland NG. 2001. A highly efficient *Escherichia coli*-based chromosome engineering system adapted for recombinogenic targeting and subcloning of BAC DNA. *Genomics* 73:56-65.
- Madisen L, Zwingman TA, Sunkin SM, Oh SW, Zariwala HA, Gu H, Ng LL, Palmiter RD, Hawrylycz MJ, Jones AR, Lein ES, Zeng H. 2010. A robust and high-throughput Cre reporting and characterization system for the whole mouse brain. *Nat Neurosci* 13:133-140.
- Marcil A, Dumontier E, Chamberland M, Camper SA, Drouin J. 2003. *Pitx1* and *Pitx2* are required for development of hindlimb buds. *Development* 130:45-55.
- Muzumdar MD, Tasic B, Miyamichi K, Li L, Luo L. 2007. A global double-fluorescent Cre reporter mouse. *Genesis* 45:593-605.
- Saeger W, Ludecke DK, Buchfelder M, Fahlbusch R, Quabbe HJ, Petersenn S. 2007. Pathohistological classification of pituitary tumors: 10 years of experience with the German Pituitary Tumor Registry. *Eur J Endocrinol* 156:203-216.
- Seuntjens E, Hauspie A, Vankelecom H, Denef C. 2002. Ontogeny of plurihormonal cells in the anterior pituitary of the mouse, as studied by means of hormone mRNA detection in single cells. *J Neuroendocrinol* 14:611-619.
- Shimshek DR, Kim J, Hubner MR, Spengel DJ, Buchholz F, Casanova E, Stewart AF, Seeburg PH, Sprengel R.

2002. Codon-improved Cre recombinase (iCre) expression in the mouse. *Genesis* 32:19–26.
- Soriano P. 1999. Generalized lacZ expression with the ROSA26 Cre reporter strain. *Nat Genet* 21:70–71.
- Uhlenhaut NH, Jakob S, Anlag K, Eisenberger T, Sekido R, Kress J, Treier AC, Klugmann C, Klasen C, Holter NI, Riethmacher D, Schutz G, Cooney AJ, Lovell-Badge R, Treier M. 2009. Somatic sex reprogramming of adult ovaries to testes by FOXL2 ablation. *Cell* 139:1130–1142.
- Van Keuren ML, Gavrilina GB, Filipiak WE, Zeidler MG, Saunders TL. 2009. Generating transgenic mice from bacterial artificial chromosomes: Transgenesis efficiency, integration and expression outcomes. *Transgenic Res* 18:769–785.
- Zambrowicz BP, Imamoto A, Fiering S, Herzenberg LA, Kerr WG, Soriano P. 1997. Disruption of overlapping transcripts in the ROSA beta geo 26 gene trap strain leads to widespread expression of beta-galactosidase in mouse embryos and hematopoietic cells. *Proc Natl Acad Sci USA* 94:3789–3794.
- Zeng C, Kouprina N, Zhu B, Cairo A, Hoek M, Cross G, Osoegawa K, Larionov V, de Jong P. 2001. Large-insert BAC/YAC libraries for selective re-isolation of genomic regions by homologous recombination in yeast. *Genomics* 77:27–34.
- Zhu X, Rosenfeld MG. 2004. Transcriptional control of precursor proliferation in the early phases of pituitary development. *Curr Opin Genet Dev* 14:567–574.