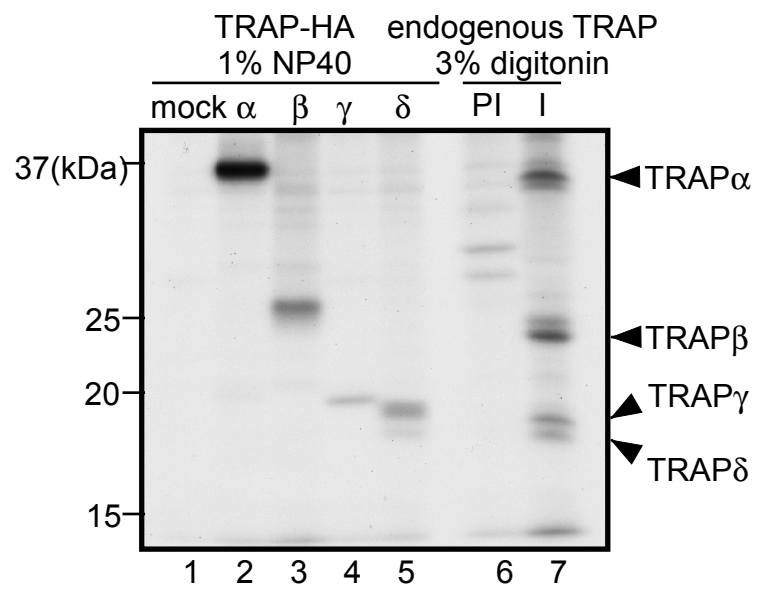


supplementary Fig 5



**supplementary Fig 5. Detection of endogenous TRAP complex by immunoprecipitation.**

C-terminally HA-tagged TRAP subunits were used as controls for identification of the endogenous TRAP subunits. Cells were labeled with [<sup>35</sup>S]-Met/Cys for 4 h, then extracted in 1% NP40 lysis buffer and immunoprecipitated with anti-HA antibody (lanes 1-5). For detection of the endogenous TRAP complex, cells were radiolabeled with [<sup>35</sup>S]-Met/Cys for 4 h and extracted with buffer containing 3% digitonin, then immunoprecipitated with preimmune rabbit serum (PI: lane 6) or anti-TRAP $\alpha$  antibody (I: lane 7).