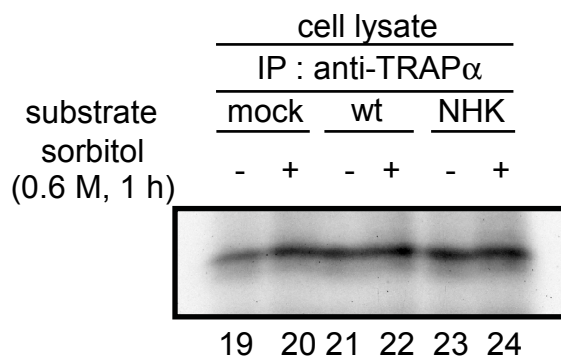
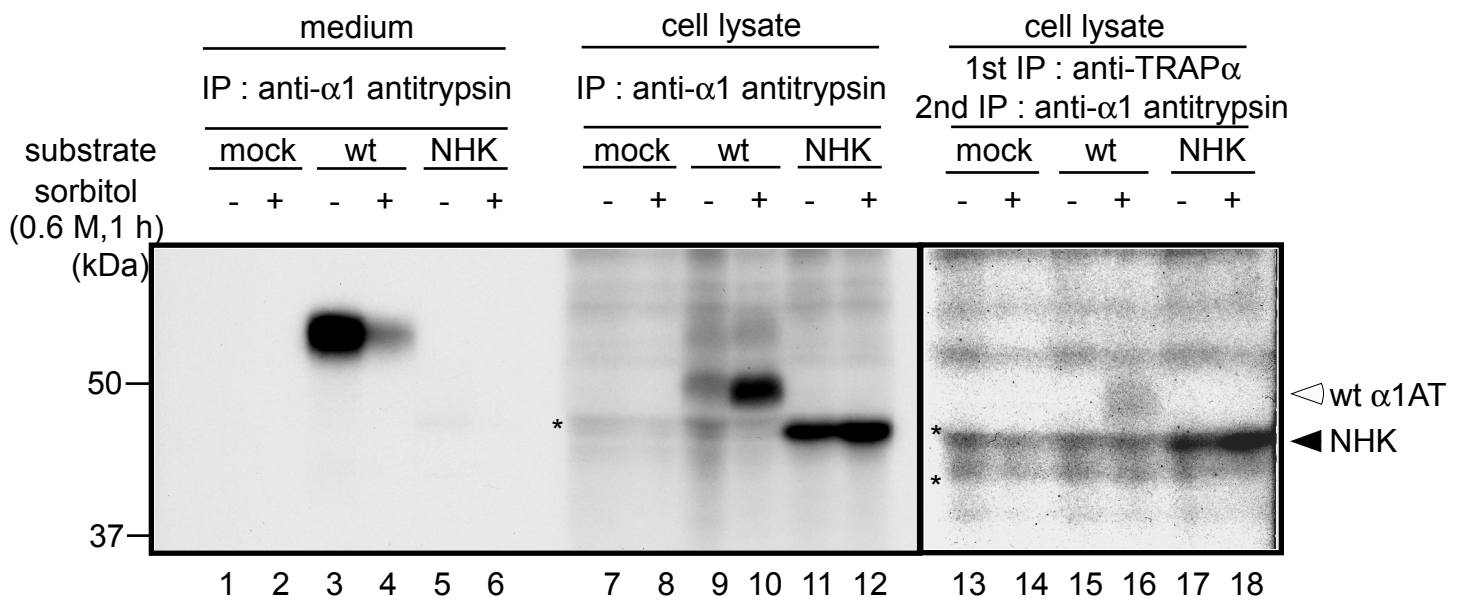


supplementary Fig 7



supplementary Fig 7. The TRAP complex has a greater affinity for NHK than for wild-type α 1-antitrypsin, even when substrates are retained in the ER. HEK293 cells were transfected with mock vector, or vector expressing NHK or wt α 1AT (wt). After 48 h of transfection, cells were radiolabeled for 2 h with [35 S]-Met/Cys and chased with normal growth medium with (+) or without (-) 0.6 M sorbitol for 1 h. As secretion of wt α 1AT was inhibited by sorbitol (lanes 3, 4), it was retained in the ER (lanes 9, 10). Sequential IPs were performed as described in Fig 4 (lanes 13-18), with control IPs using anti- α 1AT (lanes 1-6, chase medium; lanes 7-12, cell lysate) or anti-TRAP α (lanes 19-24) antibodies. Asterisks indicated non-specific signals.