



## Supporting Information

for *Small.*, DOI: 10.1002/sml.201400719

**A Radial Flow Microfluidic Device for Ultra-High-Throughput Affinity-Based Isolation of Circulating Tumor Cells**

*Vasudha Murlidhar, Mina Zeinali, Svetlana Grabauskiene, Mostafa Ghannad-Rezaie, Max S. Wicha, Diane M. Simeone, Nithya Ramnath, Rishindra M. Reddy, and Sunitha Negrath\**

## Supporting Information

### A Radial Flow Microfluidic Device for Ultra-high-throughput Affinity-based Isolation of Circulating Tumor Cells

*Vasudha Murlidhar, Mina Zeinali, Svetlana Grabauskiene, Mostafa Ghannad-Rezaie, Max S.*

*Wicha, Diane M. Simeone, Nithya Ramnath, Rishindra M. Reddy, Sunitha Nagrath\**

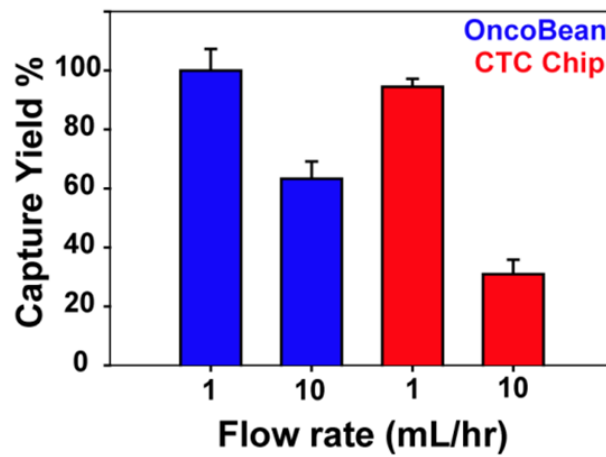


Figure S1. Comparison of H1650 cell line capture in serum free medium between OncoBean and CTC Chip at 1 and 10 mL hr<sup>-1</sup> normalized to OncoBean Chip at 1 mL hr<sup>-1</sup>

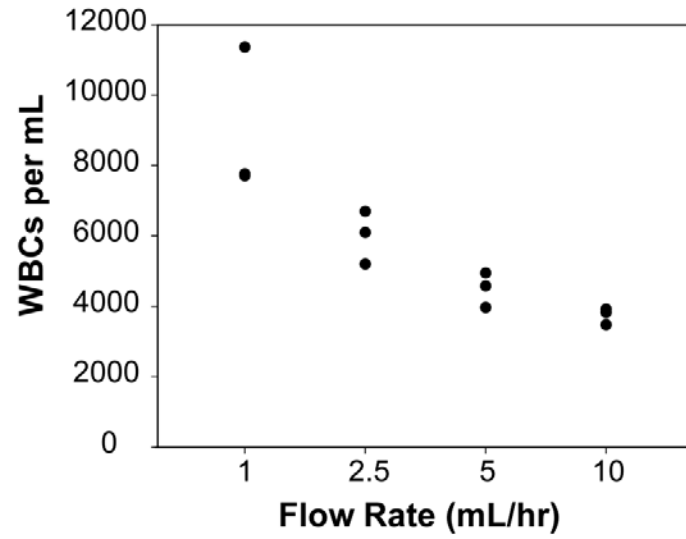


Figure S2. Effect of flow rates on non-specific white blood cells capture on the OncoBean Chip shows a 2-fold drop in WBCs at 10 mL hr<sup>-1</sup> compared to 1 mL hr<sup>-1</sup>

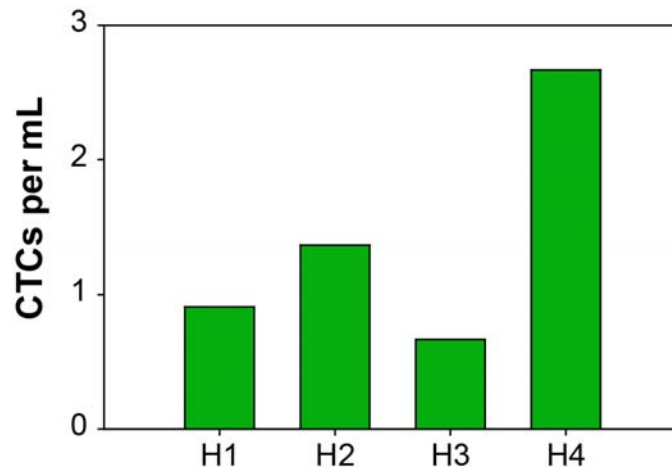


Figure S3. Healthy controls processed through the OncoBean Chip at 10 mL hr<sup>-1</sup> against anti-EpCAM showing number of CK<sup>+</sup>, CD45<sup>-</sup>, DAPI<sup>+</sup> cells.

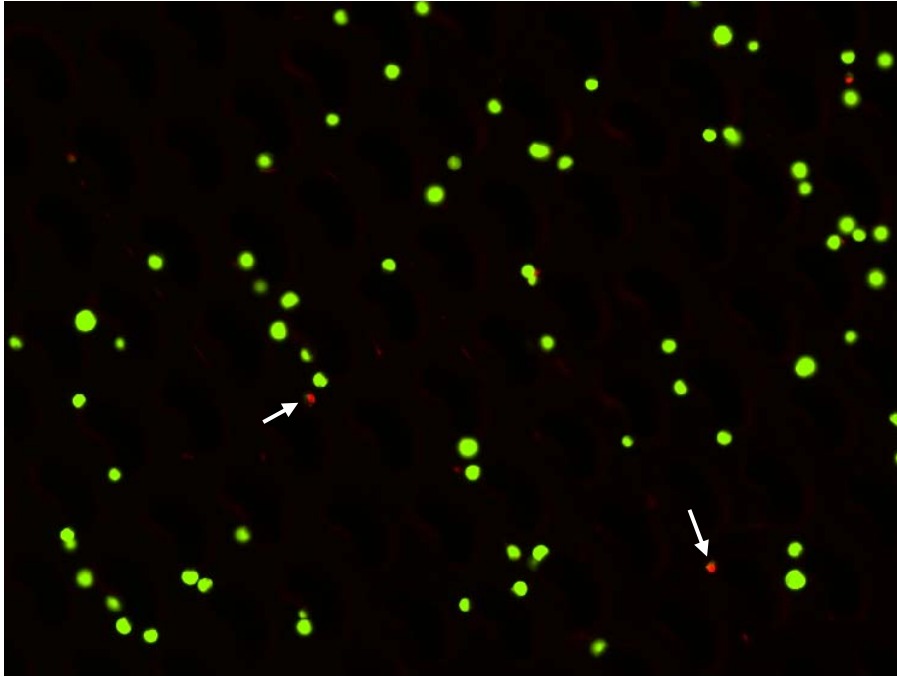


Figure S4. Invitrogen Live/Dead viability assay shows live H1650 cells (green) and dead H1650 cells (red) in one section of the device after capture at  $10 \text{ mL hr}^{-1}$  on the OncoBean Chip.