

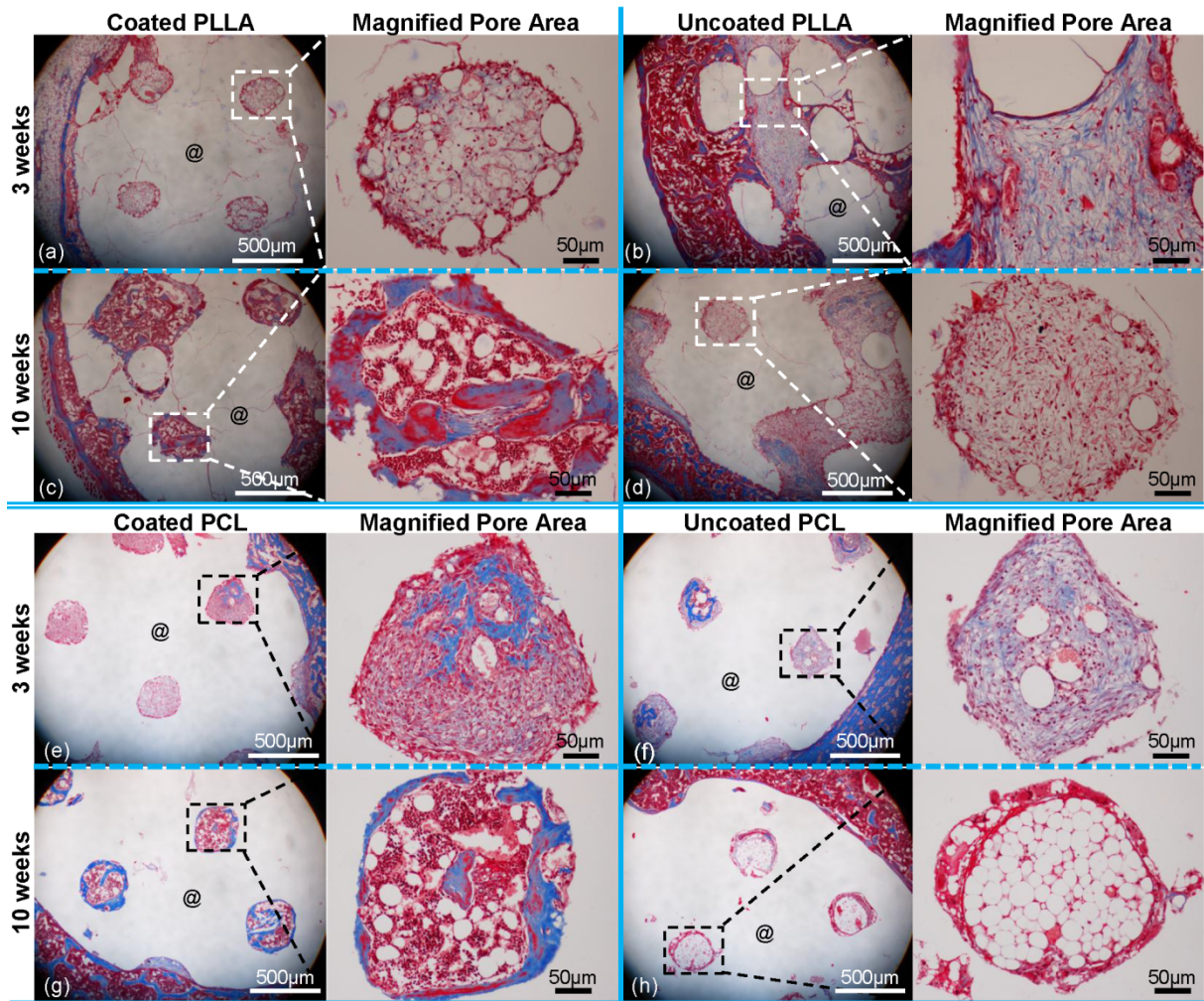
**ADVANCED
HEALTHCARE
MATERIALS**

Supporting Information

for *Adv. Healthcare Mater.*, DOI: 10.1002/adhm.201400424

Biomaterial Coating Increases Bone Formation by Ex Vivo
BMP-7 Gene Therapy in Rapid Prototyped Poly(L-lactic acid)
(PLLA) and Poly(ϵ -caprolactone) (PCL) Porous Scaffolds

*Eiji Saito, Darilis Suarez-Gonzalez, William L. Murphy, and
Scott J. Hollister**



Supplementary Figure 1. Masson's Trichrome staining of implanted PLLA and PCL scaffolds. PLLA and PCL materials were removed and became transparent in the images (indicated by @). Similar to H&E staining, little bone ingrowth was observed in implanted PLLA (a, b) and PCL (e, f) scaffolds at 3 weeks. At 10 weeks, there is well developed bone ingrowth with osteoid deposition in the coated PLLA (g) and PCL scaffolds (h) compared to the uncoated PLLA (d) and PCL (h) scaffolds.