

## **New *Phytologist* Supporting Information Figs S1–S4**

Article title: Lineage-specific gene radiations underlie the evolution of novel betalain pigmentation In Caryophyllales

Authors: Samuel F. Brockington, Ya Yang, Fernando Gandia-Herrero, Sarah Covshoff, Julian M. Hibberd, Rowan Sage, Gane K. S. Wong, Michael J. Moore and Stephen A. Smith

Article acceptance date: 03 April 2015

The following Supporting Information is available for this article:

**Fig. S1** Taxon-labeled phylogeny of the CYP76AD1 lineages (and CYP76AD1- $\gamma$ ).

**Fig. S2** Taxon-labeled phylogeny of the CYP76AD1 lineages (CYP76AD1- $\alpha$ , CYP76AD1- $\beta$ )

**Fig. S3** Taxon-labeled phylogeny of the 4,5-dioxygenase (DODA) lineages (DODA- $\beta$ ).

**Fig. S4** Taxon-labeled phylogeny of the 4,5-dioxygenase (DODA) lineage (DODA- $\alpha$ ).

**Table S1** Sources of the transcriptome data (separate Excel file)

**Table S2** Information for 14 newly sequenced transcriptomes: provenance, herbarium vouchers, type of material (separate Excel file)

**Table S3** List of 4,5-dioxygenase (DODA) gene accessions and corresponding taxa (separate Excel file)

**Table S4** List of CYP76AD1 gene accessions and corresponding taxa (separate Excel file)

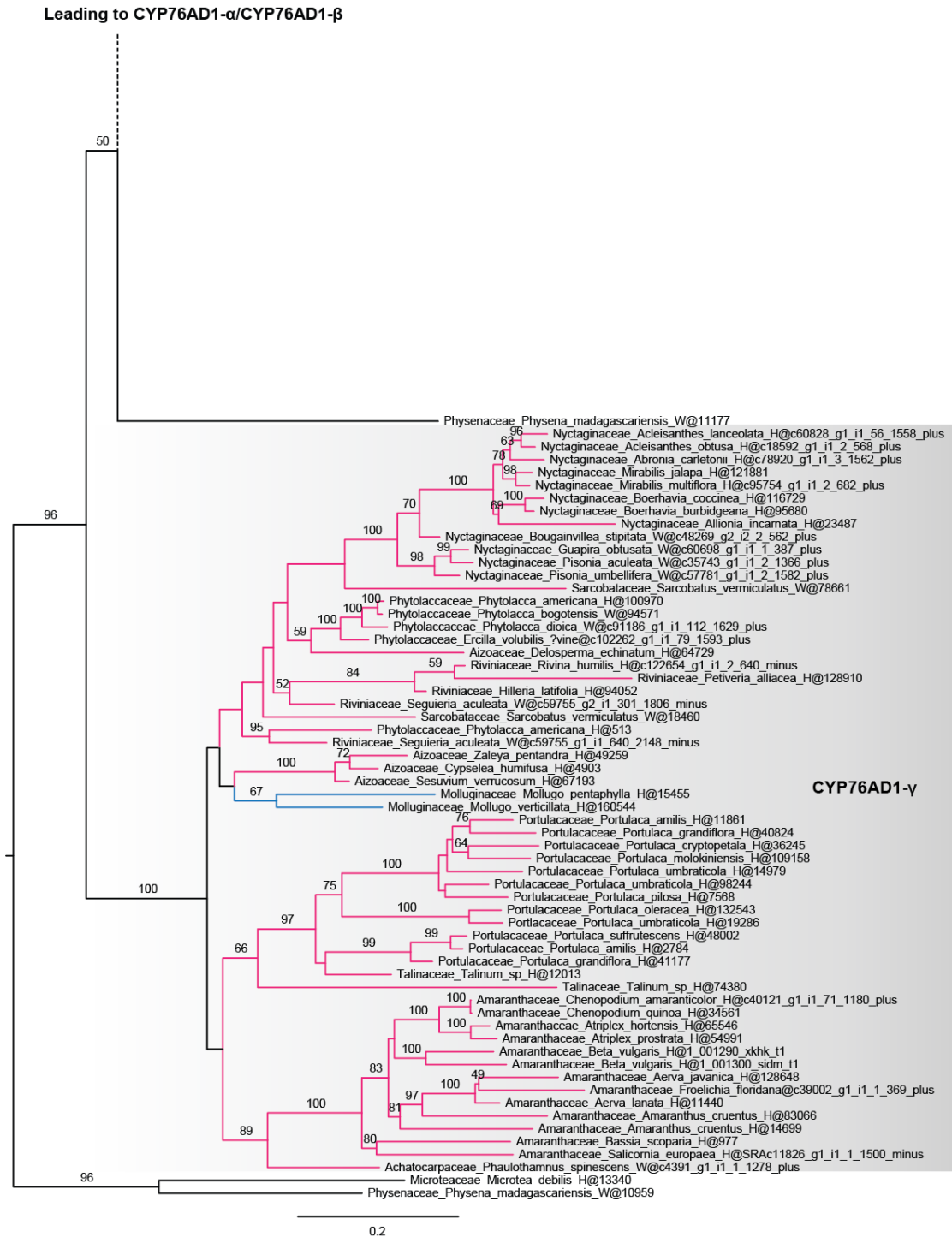


Fig. S1 Taxon-labeled phylogeny of the CYP76AD1 lineages (CYP76AD1- $\gamma$ ).

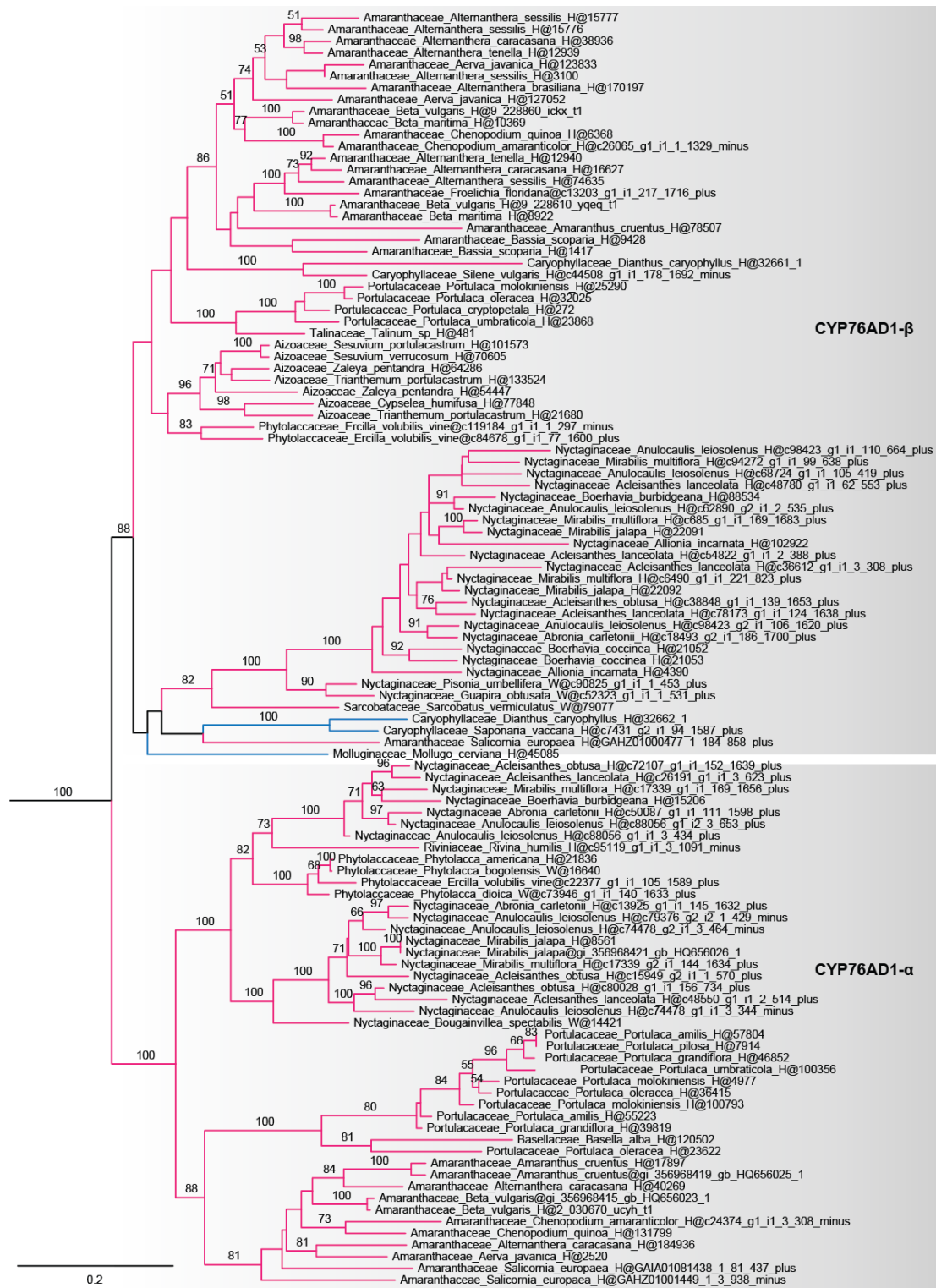


Fig. S2 Taxon-labeled phylogeny of the CYP76AD1 lineages (CYP76AD1- $\alpha$ , CYP76AD1- $\beta$ ).



Fig. S3 Taxon-labeled phylogeny of the 4,5-dioxygenase (DODA) lineages (DODA-β).

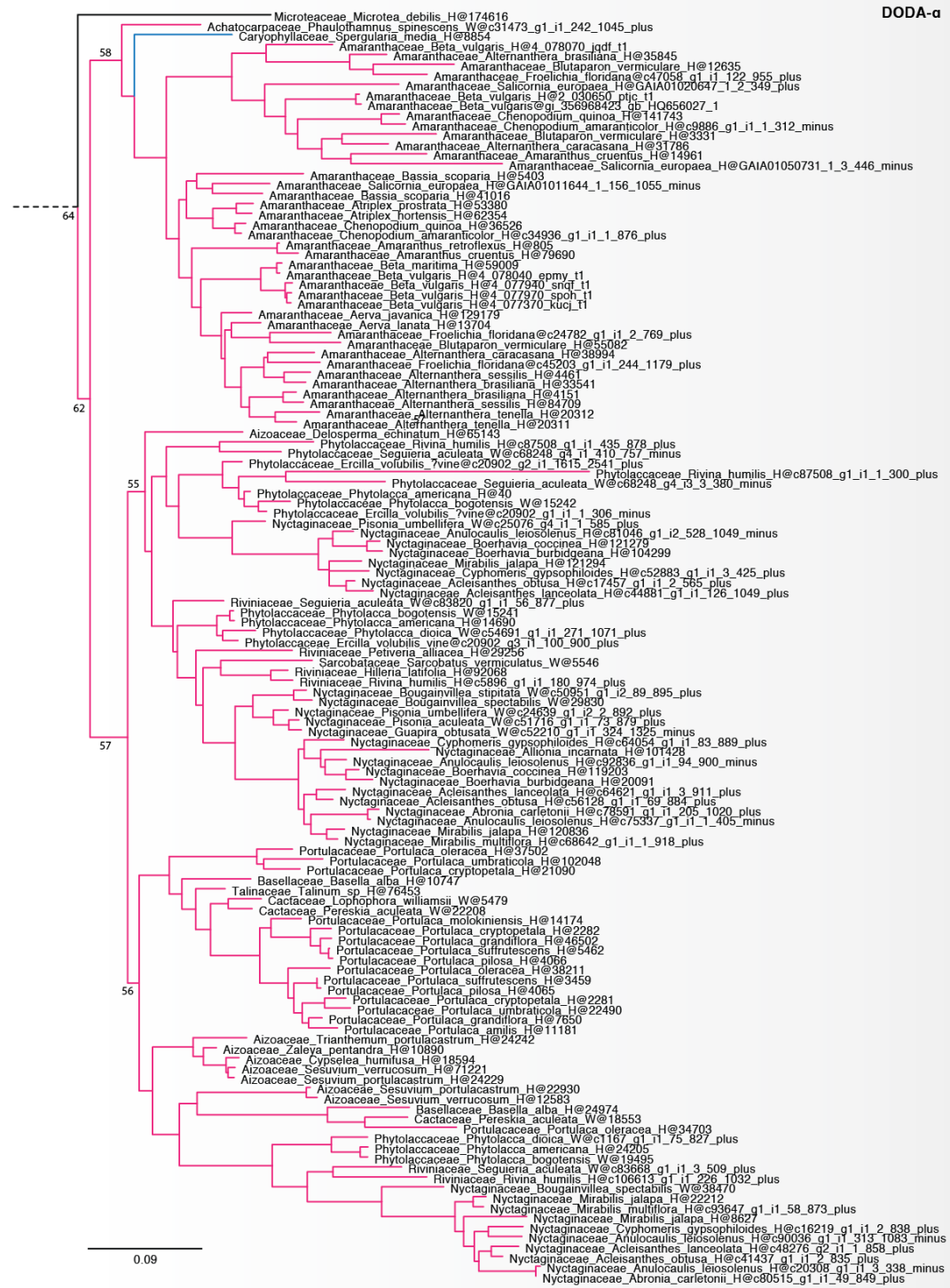


Fig. S4 Taxon-labeled phylogeny of the 4,5-dioxygenase (DODA) lineage (DODA- $\alpha$ ).