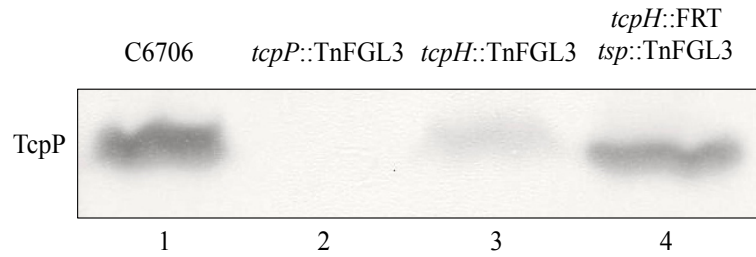
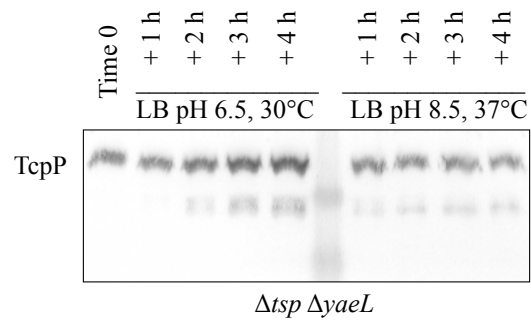


## SUPPLEMENTARY INFORMATION



**Supplemental Fig. 1.** Effect of *tsp* mutation on TcpP stability in the El Tor biotype. The transposon-inserted *tsp* allele (*tsp::TnFGL3*) was transduced into a C6706 *tcpH* mutant that had its kanamycin resistance cassette removed by FLP recombinase-mediated excision (*tcpH::FRT*). Overnight cultures were subcultured 1:50 and grown to mid-logarithmic phase in pH 6.5 LB at 30°C. Samples were harvested, separated by SDS/PAGE and analyzed by immunoblotting with antibodies against TcpP.



**Supplementary Fig. 2.** TcpP proteolysis in *Δtsp ΔyaeL* cells. Overnight cultures of O395 *Δtsp ΔyaeL V. cholerae* were subcultured 1:50 and grown to mid-logarithmic phase in pH 6.5 LB at 30°C. Cell culture was split into two equal portions for harvest by centrifugation and resuspended either in pH 6.5 LB and grown at 30°C or in pH 8.5 LB and grown at 37°C for an additional 4 h. Samples were harvested for Western blot analysis before resuspension in new media (time 0), and at each hour after resuspension for both conditions. Samples were separated by SDS/PAGE and analyzed by immunoblotting with antibodies against TcpP. Detection of smaller TcpP-antibody reactive bands indicates possible nonspecific degradation of TcpP.