

**ADVANCED  
HEALTHCARE  
MATERIALS**

Supporting Information

for *Adv. Healthcare Mater.*, DOI: 10.1002/adhm.201601173

Autoclaving-Derived Surface Coating with In Vitro and In Vivo Antimicrobial and Antibiofilm Efficacies

*Yajuan Su, Zelun Zhi, Qiang Gao, Meihua Xie, Meng Yu, Bo Lei, Peng Li,\* and Peter X. Ma*

## Supporting Information

### **Autoclaving-derived Surface Coating with *in vitro* and *in vivo* Antimicrobial and Antibiofilm Efficacies**

*Yajuan Su, Zelun Zhi, Qiang Gao, Meihua Xie, Meng Yu, Bo Lei, Peng Li\*, Peter X. Ma*

Y. Su, M. Yu, M. Xie, Q. Gao, Prof. B. Lei and Prof. P. Li  
Center for Biomedical Engineering and Regenerative Medicine, Frontier Institute of Science and Technology, Xi'an Jiaotong University, Xi'an 710054, China

Z. Zhi and Prof. P. Li

Key Laboratory of Flexible Electronics (KLOFE) and Institute of Advanced Materials (IAM), Jiangsu National Synergetic Innovation Center for Advanced Materials (SICAM), Nanjing Tech University (NanjingTech), Nanjing 211816, China

\* E-mail: [iamppli@njtech.edu.cn](mailto:iamppli@njtech.edu.cn) Tel/Fax: (86) 25-83587982.

Prof. P. X. Ma

Department of Biomedical Engineering, University of Michigan, Ann Arbor, MI 48109, USA

Prof. P. X. Ma

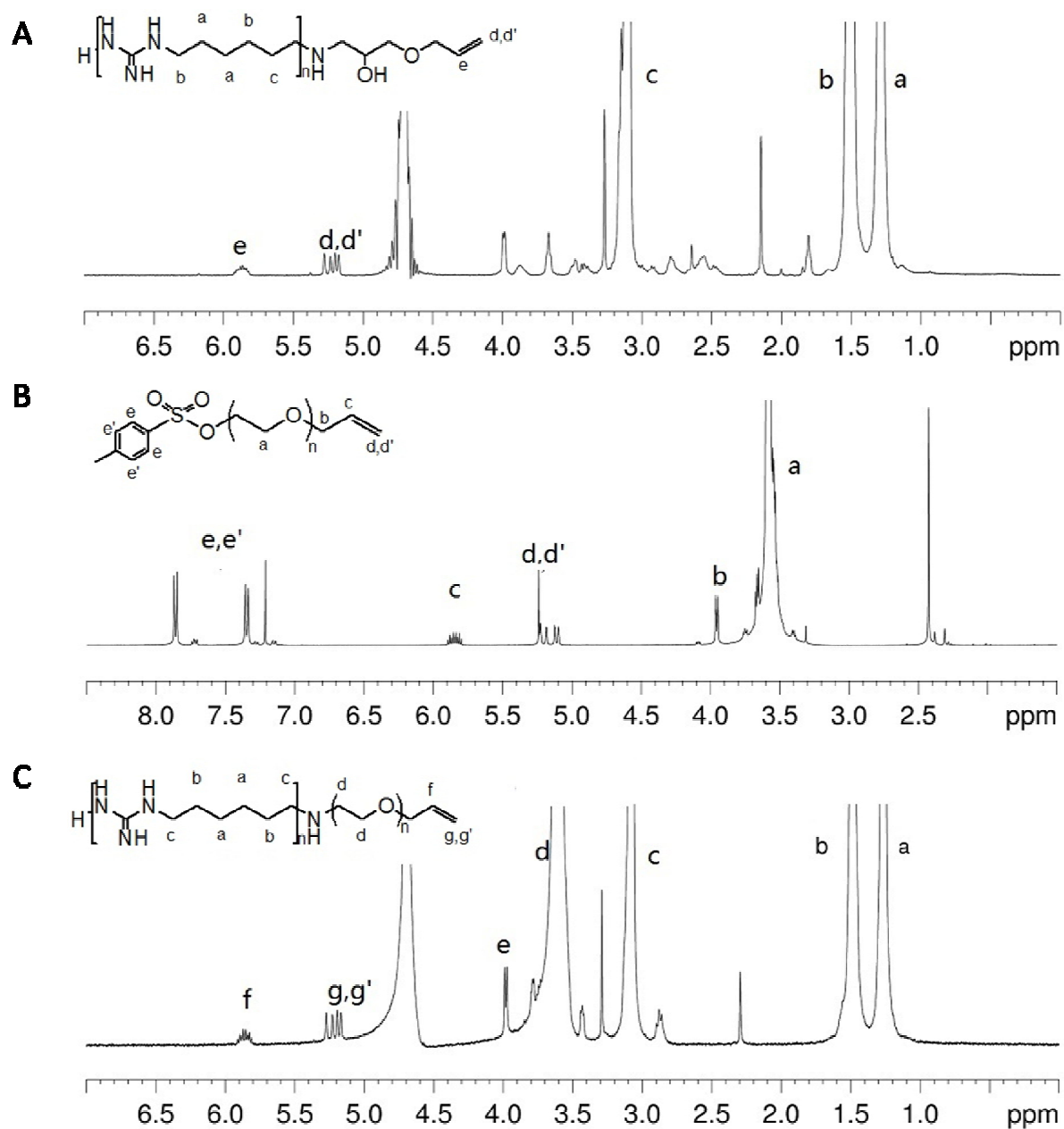
Department of Biologic and Materials Sciences, University of Michigan, Ann Arbor, MI 48109, USA

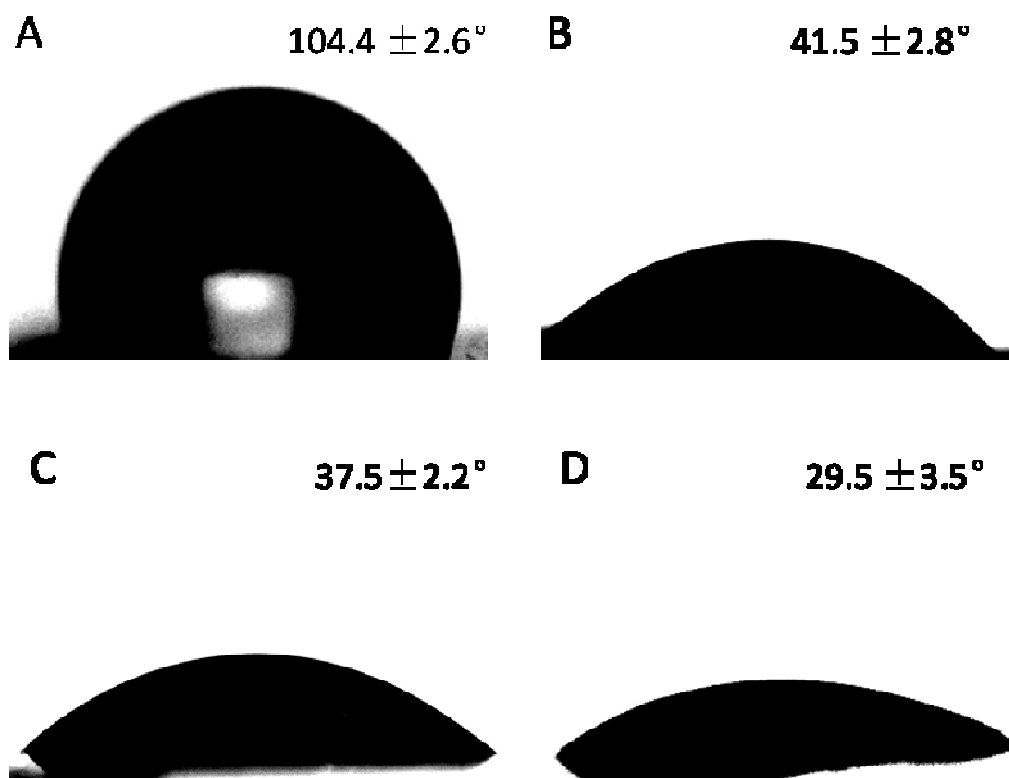
Prof. P. X. Ma

Macromolecular Science and Engineering Center, University of Michigan, Ann Arbor, MI 48109, USA

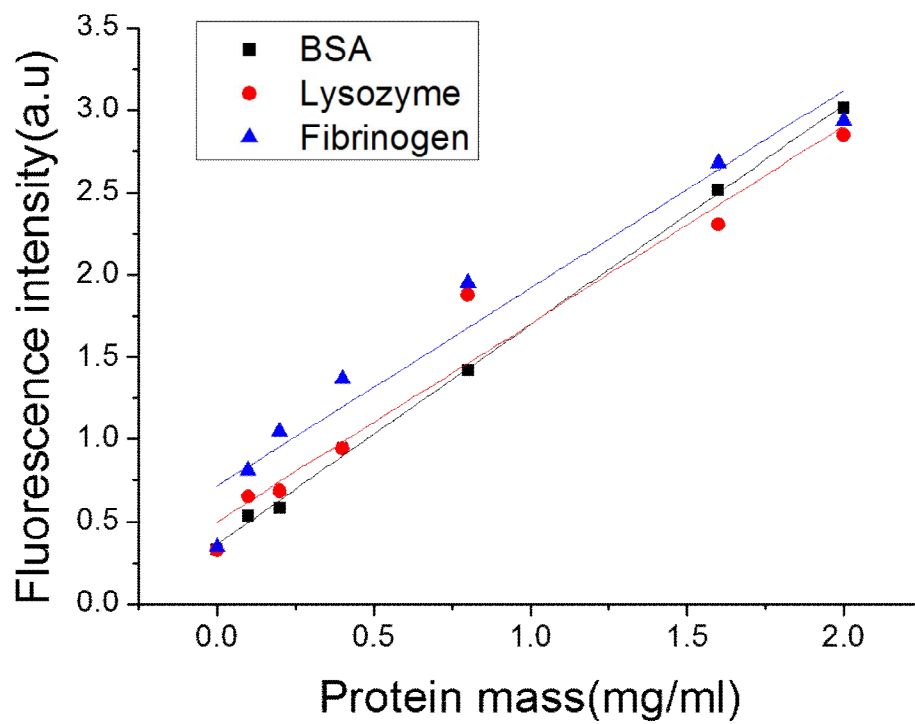
Prof. P. X. Ma

Department of Materials Science and Engineering, University of Michigan, Ann Arbor, MI 48109, USA

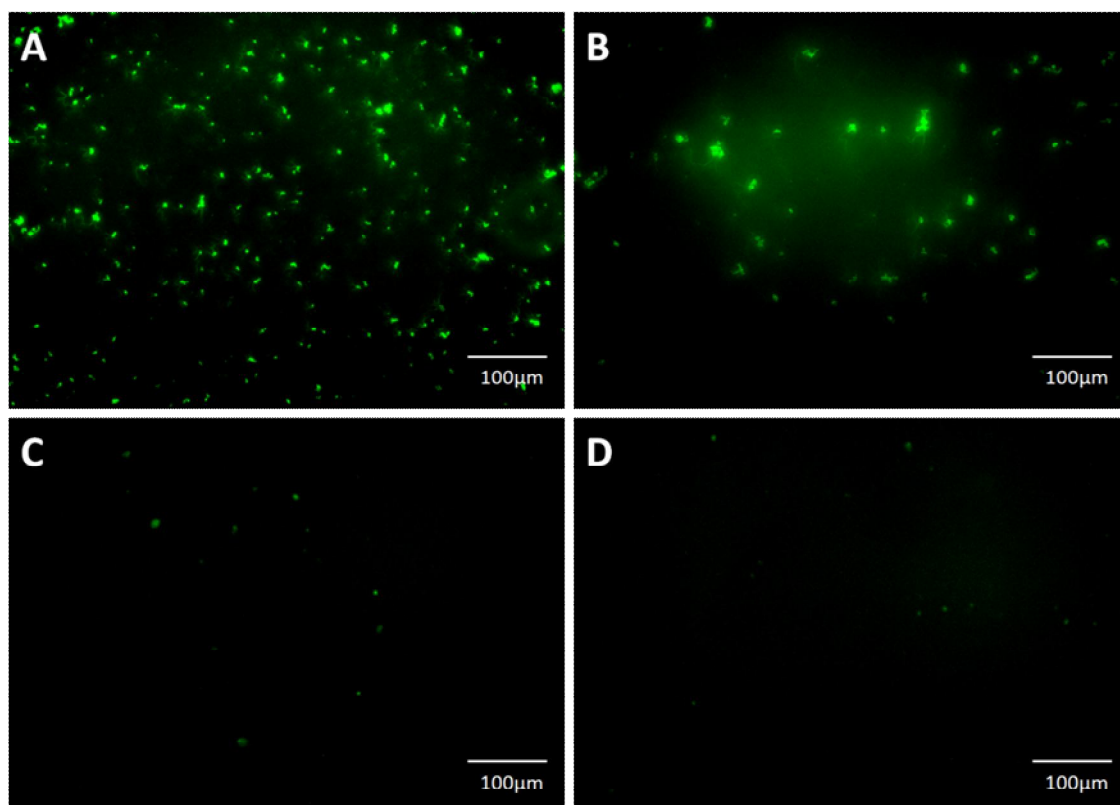




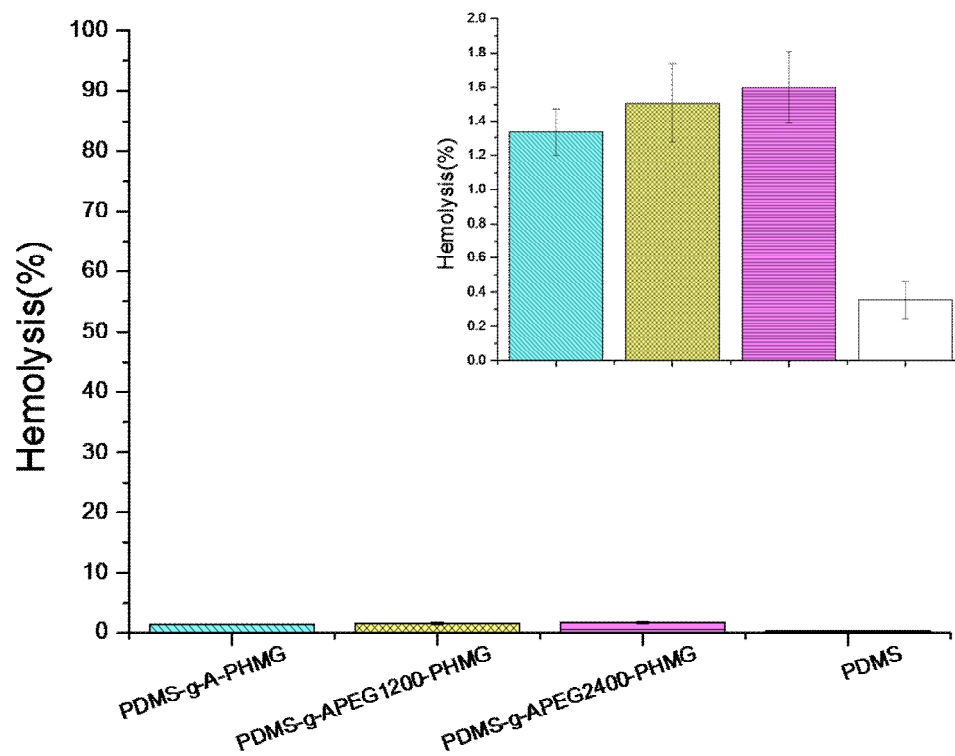
**Figure S2.** Contact angle measurement of deionized water on (A) pristine PDMS; (B) PDMS-*g*-A-PHMG; (C) PDMS-*g*-APEG<sub>1200</sub>-PHMG; (D) PDMS-*g*-APEG<sub>2400</sub>-PHMG.



**Figure S3.** Standard calibration curve of protein adsorption determined by BCA assay.



**Figure S4.** BSA-FTIC adsorbed on pristine PDMS (A), PDMS-g-A-PHMG (B), PDMS-g-APEG<sub>1200</sub>-PHMG (C) and PDMS-g-APEG<sub>2400</sub>-PHMG (D) imaged with confocal laser scanning microscopy.



**Figure S5.** Hemolytic assay of pristine PDMS and PHMG-based coatings on PDMS.