

# PEDIATRIC AND CONGENITAL HEART DISEASE

## Original Studies

### Twenty Years of Experience With Intraoperative Pulmonary Artery Stenting

Jeffrey D. Zampi,<sup>1\*</sup> MD , Emefah Loccoh,<sup>2</sup> Aimee K. Armstrong,<sup>3</sup> MD, Sunkyung Yu,<sup>1</sup> MS, Ray Lowery,<sup>1</sup> Albert P. Rocchini,<sup>1</sup> MD, and Jennifer C. Hirsch-Romano,<sup>4</sup> MD, MS

**Objectives:** To describe our 20-year experience with intraoperative pulmonary artery (PA) stent placement and evaluate long-term patient outcomes, specifically the need and risk factors for reintervention. **Background:** Intraoperative PA stent placement is an alternative to surgical patch arterioplasty and percutaneous angioplasty or stent placement to treat branch PA stenosis. **Methods:** We performed a retrospective review of all intraoperative PA stents placed at our institution from 1994–2013. Patient and stent characteristics and outcome data were collected. Risk factors associated with reintervention were identified using univariate cox regression analysis. **Results:** Eighty-one PA stents were placed in 68 patients. The procedural complication rate was 4.4%. During a median follow-up period of 6 years (interquartile range [IQR] 0.9–12.7), 30 patients (44%) underwent reintervention on the stented PA with a median time to first reintervention of 2.6 years (IQR 0.7–4.4 years). The first reintervention was surgical in 30% and catheter-based in 70%. Risk factors for reintervention included age < 18 months (Hazard ratio [HR] 2.97,  $P = 0.005$ ) and body surface area < 0.47 m<sup>2</sup> (HR 3.20,  $P = 0.003$ ) at the time of stent implantation, and the presence of multiple aortopulmonary collaterals in patients with tetralogy of Fallot (HR 4.61,  $P = 0.003$ ). **Conclusions:** Intraoperative PA stent implantation is a safe and effective alternative to percutaneous stent implantation and offers several advantages, including the ability to implant adult-size stents in small patients while avoiding injury to peripheral vessels, to position stents to facilitate future percutaneous stent redilation, and to access the PAs directly, which eliminates radiation exposure. © 2017 Wiley Periodicals, Inc.

**Key words:** congenital heart disease; stenting technique; hybrid revascularization (peripheral)

## INTRODUCTION

Branch pulmonary artery (PA) stenosis is a relatively common problem in congenital heart disease. Percutaneous

techniques have reduced the need for surgical pulmonary arterioplasty and are as effective as surgical arterioplasty while avoiding cardiopulmonary bypass (CPB) [1–3].

<sup>1</sup>Division of Pediatric Cardiology, University of Michigan Congenital Heart Center, C.S. Mott Children's Hospital, Ann Arbor, Michigan

<sup>2</sup>Ohio State University, College of Medicine, Columbus, Ohio

<sup>3</sup>Division of Pediatric Cardiology, Nationwide Children's Hospital, Columbus, Ohio, 43205

<sup>4</sup>Department of Cardiac Surgery, University of Michigan Congenital Heart Center, C.S. Mott Children's Hospital, Ann Arbor, Michigan

\*Correspondence to: Jeffrey Zampi, Pediatric Cardiology, University of Michigan Congenital Heart Center, C.S. Mott Children's Hospital Floor 11, Room 715Z, 540 E. Hospital Drive, Ann Arbor, MI 48109-4204. E-mail: jzampi@med.umich.edu

Received 30 September 2016; Revision accepted 25 March 2017

DOI: 10.1002/ccd.27094

Published online 4 May 2017 in Wiley Online Library (wileyonlinelibrary.com)

Conflict of interest: Nothing to report.

However, many patients still require operative repair either due to the morphology of the stenosis, inadequate response to percutaneous techniques, small patient size prohibiting safe or effective percutaneous intervention, or the need for concomitant repair of other surgical defects [1]. Reintervention for recurrent stenosis after surgical pulmonary arterioplasty is required in 48–64% of patients and has not changed significantly over the last 40 years [2–5]. Because of early restenosis, these patients can require multiple surgical or catheterization procedures early in childhood, exposing them to the risks of repeated sternotomy, CPB, and/or radiation, to name a few.

Intraoperative PA stent placement is an alternative approach. This procedure has been shown to be safe with excellent short-term efficacy [6–14]. It can allow for implantation of stents that can be dilated to adult size that would be difficult to place percutaneously in small children, while avoiding ionizing radiation exposure from cardiac catheterization procedures. However, longer-term data on the outcomes of intraoperative PA stenting are limited [15].

We sought to describe our experience with intraoperative PA stent placement over the last 20 years and to examine long-term patient outcomes, specifically focusing on the incidence of and risk factors for reintervention, due to recurrent PA stenosis.

## MATERIALS AND METHODS

After receiving Institutional Review Board approval with waiver of informed consent, we performed a retrospective review of all intraoperative PA stents placed at our institution between January 1, 1994 and December 31, 2013. Patients were identified through review of the electronic medical record, cardiac catheterization reporting systems, and surgical records. Any patient who underwent placement of an intraoperative PA stent was included. Patients were excluded if stent implantation was not attempted or if there was not sufficient documentation to know if stent implantation occurred intraoperatively. Patient data, procedural information (stent type, procedural success and complications), and follow-up data were collected. Procedural success was defined as placement of a stent without the need for removal during the operation.

### Stent Implantation Technique

All intraoperative PA stents were placed in the operating room on CPB. Minimal dissection of the vessels was performed for isolated stent implantation with retrograde flow within the vessel being managed with pump suckers as needed without obtaining distal vessel control. In the case of pulmonary arterioplasty followed by stent

implantation, the PA was fully mobilized with distal control achieved when feasible. Stent diameter, length and position were determined based on presurgical angiograms obtained by cardiac catheterization. Stent diameter was determined by the size of the normal adjacent vessel (~1 mm larger than adjacent or distal PA diameter) and no more than 3 times the diameter of the narrowest stenotic PA segment. Whenever possible, stent length was chosen to avoid jailing side branches of distal vessels. Other than direct visual inspection, no other modality, including fluoroscopy, angiography or other visualization techniques (e.g., endoscopy) were utilized. Stent position was defined as ostial/proximal for stents placed prior to the first PA bifurcation and distal for stents placed after the first PA bifurcation. For stents placed in proximal or ostial locations, the proximal end of the stent was manually widened or “flared” into the main PA, helping to secure the stent in place and facilitating future access into the stent lumen during cardiac catheterization. Only balloon-expandable, bare metal stents were used, and whenever possible, medium and large diameter stents were selected [16].

### Statistical Analysis

Patient and stent characteristics and short- and long-term patient outcomes are described as frequency with percentage for categorical variables and median with interquartile range (IQR) for continuous variables. Freedom from reintervention in overall and selected subgroups and overall survival were evaluated by Kaplan-Meier curves. Univariate and multivariable Cox regression analyses were performed to identify factors associated with reintervention. Variables associated with reintervention in the univariate analysis ( $P < 0.1$ ) were incorporated into the multivariable analysis. Due to collinearity between age and body surface area at the time of initial stent implantation, only body surface area was included in the multivariable analysis. Hazard ratio (HR) and 95% confidence interval from the Cox regression were reported. A  $P$ -value  $< 0.05$  was considered statistically significant. Analyses were performed using SAS Version 9.4 (SAS Institute Inc, Cary, North Carolina).

## RESULTS

### Patient Characteristics

Eighty-one PA stents were placed in 68 patients (Table I). In the majority of patients (84%), stent implantation was performed as part of a procedure to repair or palliate another cardiac defect (e.g., conduit replacement). Tetralogy of Fallot (TOF) was the most common diagnosis (38%) and 11 patients (16%) had major

**TABLE I. Patient and Clinical Characteristics (n = 68)**

Male sex	48 (70.6)
Caucasian race	50 (73.5)
Age, <sup>a</sup> years	2.6 (1.2–7.6)
< 18 months	22 (32.4)
≥ 18 months	46 (67.6)
Weight, <sup>a</sup> kg	12.4 (8.7–20.4)
Height, <sup>a</sup> cm	85.5 (74.5–123)
Body surface area, <sup>a</sup> m <sup>2</sup>	0.54 (0.42–0.84)
< 0.47 m <sup>2</sup>	25 (36.8)
≥ 0.47 m <sup>2</sup>	43 (63.2)
Cardiac diagnosis	
TOF	26 (38.2)
With pulmonary stenosis	8 (11.8)
With pulmonary atresia	18 (26.5)
{With MAPCAs	11 (16.2)}
HLHS	13 (19.1)
Truncus Arteriosus	7 (10.3)
Other single ventricle defects	4 (5.9)
Double outlet right ventricle	3 (4.4)
l-TGA	3 (4.4)
d-TGA	2 (2.9)
AVSD	1 (1.5)
Other	9 (13.2)
Indication for surgery	
Repair or palliation of another cardiac defect	57 (83.8)
Isolated branch pulmonary stenosis	11 (16.2)
Etiology of pulmonary stenosis	
Acquired (including postsurgical)	57 (83.8)
Congenital	11 (16.2)
Affected PA	
Left	40 (58.8)
Right	15 (22.1)
Bilateral	13 (19.1)
Location	
Ostial/Proximal	58 (85.3)
Distal	8 (11.8)
Unknown	2 (2.9)
Total number(s) of prior surgery	
1	23 (33.8)
2	29 (42.6)
3	13 (19.1)
4	3 (4.4)
Prior PA interventions	24 (35.3)
Surgical	15 (22.1)
Transcatheter	12 (17.6)

<sup>a</sup>At time of surgery when intraoperative stent placed.

Data are presented as *N* (%) for categorical variables and Median (25th percentile – 75th percentile) for continuous variables.

Abbreviations: TOF, tetralogy of Fallot; MAPCAs, multiple aortopulmonary collateral arteries; HLHS, hypoplastic left heart syndrome; TGA, transposition of the great arteries; AVSD, atrioventricular septal defect.

aortopulmonary collateral arteries (MAPCA), representing 42% of the patients with TOF.

Intraoperative PA stents were most commonly placed in the left PA (59%) and to treat proximal stenoses (85%). Medium and large diameter bare metal stents were implanted in 97% of patients. PALMAZ XL Transhepatic Biliary Stent (58%, Cordis Endovascular Corporation, Santa Clara, CA) and ev3 IntraStent<sup>®</sup> Mega<sup>™</sup>

Catheterization and Cardiovascular Interventions DOI 10.1002/ccd.

Published on behalf of The Society for Cardiovascular Angiography and Interventions (SCAI).

**TABLE II. Intraoperative and Hospital Outcomes**

Length of intubation, days	1 (0–3)
Hospital length of stay, days	8 (6–14)
30-day hospital mortality <sup>a</sup>	6 (8.8)
Residual stenosis on discharge echocardiogram (if successful implant)	
None	47 (69.1)
Mild	7 (10.3)
Moderate	3 (4.5)
Severe	1 (1.5)
Unknown	9 (13.4)

<sup>a</sup>30-day mortality refers to death within 30 days of surgery or prior to hospital discharge, whichever is greater.

Data are presented as *N* (%) for categorical variables and Median (25th percentile – 75th percentile) for continuous variables.

LD Biliary Stent (29%, ev3 Endovascular, Plymouth, MN) were utilized most frequently.

All patients had previously undergone at least one prior cardiac operation and all patients had undergone at least one prior cardiac catheterization. Twenty-four patients (35%) had undergone a prior PA intervention, either surgical or catheter-based, on the same PA that received an intraoperative PA stent. Of these, 15 patients (22%) had undergone at least one prior surgical patch arterioplasty, and 3 patients (4.4%) had undergone more than 1 arterioplasty. In addition, 12 (18%) had previous transcatheter interventions, 3 of whom (4.4%) required multiple prior catheter interventions. In these 12 patients, the median time from catheterization to intraoperative stent placement was 91.5 days (IQR 21 days to 2.5 years), whereas the median time from cardiac catheterization (including diagnostic and interventional procedures) to intraoperative stent placement was 22 days (IQR 1–65 days) for the entire of cohort of patients.

### Intraoperative and Hospital Outcomes

Stent implantation was acutely successful in all patients but one (99%). This patient developed a distal PA laceration requiring immediate stent removal. The procedural complication rate was 4.4% (*n* = 3) and all involved a PA injury requiring repair or patch augmentation.

At hospital discharge, 92% (54/59) of patients had either no or mild residual stenosis by echocardiogram when excluding patients with an unknown degree of residual stenosis (PAs not visualized or echocardiographic images unavailable) (Table II). Of the 9 patients without a sufficient echocardiogram, 6 underwent a cardiac catheterization between 3 days and 20 months after initial stent placement. In these patients, 4 had no stent stenosis and 2 had mild stent stenosis.

### Follow-up Patient Outcomes

During a median follow-up period of 6 years (IQR 0.9–12.7), 30 patients (44%) underwent reintervention

**TABLE III. Long-Term Patient Outcomes**

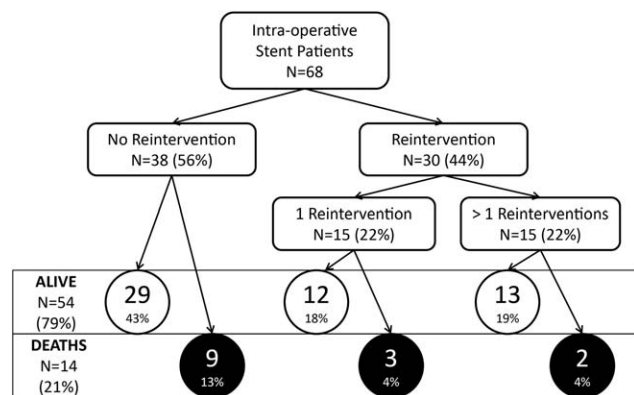
Duration of follow-up, years	6.0 (0.9–12.7) ALL	(maximum 17.9 years)	
		Left	Right
Reintervention(s)	<b>30 (44.1)</b>	21/53 (39.6)	14/28 (50.0)
Time to first reintervention, years	<b>2.6 (0.7–4.4)</b>	2.5 (0.9–5.3)	2.6 (0.3–3.0)
Reason for (first) reintervention			
In-stent stenosis	<b>16 (53.3)</b>	11 (52.4)	7 (50.0)
Somatic growth	<b>9 (30.0)</b>	5 (23.8)	5 (35.7)
Stent Occlusion	<b>1 (3.3)</b>	1 (4.8)	0 (0.0)
Distal PA stenosis	<b>1 (3.3)</b>	1 (4.8)	0 (0.0)
Stent fracture	<b>0 (0.0)</b>	0 (0.0)	0 (0.0)
Unknown	<b>3 (10.0)</b>	3 (14.3)	2 (14.3)
Type of (first) reintervention			
Surgical	<b>9 (30.0)</b>	7 (33.3)	2 (14.3)
Transcatheter	<b>21 (70.0)</b>	14 (66.7)	12 (85.7)
Subsequent reintervention (s)	<b>15 (22.1)</b>	11 (20.8)	6 (21.4)
Surgical	<b>12 (17.6)</b>	10 (18.9)	2 (7.1)
Transcatheter	<b>24 (35.3)</b>	17 (32.1)	12 (39.3)

Data are presented as *N* (%) for categorical variables and Median (25th percentile – 75% percentile) for continuous variables. Bold is used to differentiate the overall cohort (in bold) from the left and right pulmonary artery cohorts.

on their intraoperatively placed PA stent(s) (Table III) (Fig. 1). The median time to first reintervention was 2.6 years (IQR 0.7–4.4 years). The first reintervention was a surgical procedure in 9 (30%) patients, with all undergoing intraoperative dilation of the existing stent, along with a concomitant surgery. No patient required subsequent surgical pulmonary arterioplasty of the stented PA. Only 1 patient underwent a surgical procedure for the sole purpose of treating PA stenosis. This patient had single ventricle physiology and because of persistent unilateral lung collapse in the early postoperative period, a lung ventilation perfusion scan was performed which showed no perfusion to unilateral and ipsilateral lung supplied by the stented PA. Therefore, the patient was taken back to the operation room 7 days after the primary surgery with intraoperative stent implantation and underwent surgical thrombectomy and stent dilation with good long term result. Percutaneous intervention was not attempted. The other 8 patients underwent surgery for other indications (conduit revision [*n* = 4], Fontan completion [*n* = 2], Fontan takedown [*n* = 1] and shunt revision [*n* = 1]). All 8 patients were able to have the existing stent redilated.

The first reintervention was a percutaneous procedure in 21 (70%) patients, which included balloon angioplasty of the existing stent in 14 and placement of a new stent(s) in 7. For the 7 patients who had new stents placed, the indication was in-stent stenosis (*n* = 2), somatic growth (*n* = 3), stenosis distal to the intraoperative placed stent (*n* = 2), and unknown (*n* = 1).

In the overall cohort, the majority of patients required reintervention for in-stent stenosis (53%) and for somatic growth (30%). Of note, no patient required reintervention for either surgical complication or stent fracture at the time of the first reintervention.

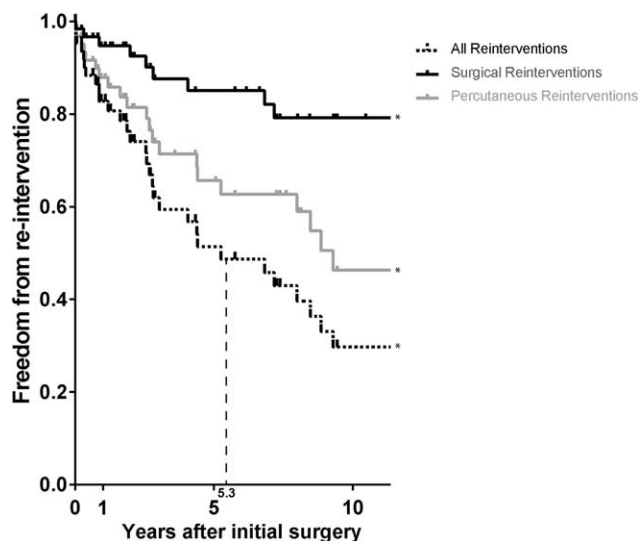


**Fig. 1. Patient outcomes flow chart.**

The overall freedom from reintervention was 83%, 74%, 51%, and 30% at 1, 2, 5, and 10 years, respectively (Fig. 2). The freedom from surgical reintervention was 95%, 93%, 85%, and 79% at 1, 2, 5, and 10 years, respectively.

In univariate cox regression analysis, several factors were associated with an increased risk of reintervention (Table IV). These included age less than 18 months (HR 2.97, *P* = 0.005; Fig. 3A) and body surface area less than 0.47 m<sup>2</sup> (HR 3.20, *P* = 0.003; Fig. 3B) at the time of the initial stent implantation, a cardiac diagnosis of TOF (compared to non-TOF patients, HR 2.36, *P* = 0.02; Fig. 3C) and the presence MAPCA (HR 3.56, *P* = 0.01). On further examination, the increased hazard seen in the TOF group was driven by the presence of MAPCA, as only TOF patients with MAPCA had a significantly higher risk of reintervention compared to non-TOF patients (HR 4.61, *P* = 0.003; Fig. 3D). There were no differences in the etiology, sidedness, or location of the





**Fig. 2.** Freedom from first re-intervention in the overall cohort stratified by the type of re-intervention (surgical versus percutaneous). The median time to re-intervention is 5.3 years for the overall cohort, as illustrated by the dotted line. The (\*) indicates that no patient in any cohort was at risk after 10 years, and therefore, the figure was truncated to only include the first 10 years of follow-up.

pulmonary stenosis in terms of risk for re-intervention. Additionally, prior intervention to treat pulmonary stenosis was not associated with re-intervention. Multivariable analysis showed that cardiac diagnosis was independently associated with re-intervention, controlling for body surface area at the time of initial stent implantation and etiology of PA stenosis (Table V).

There were no deaths or long-term complications related to intraoperative stent placement. However, 6 patients died within 30 days of surgery or prior to hospital discharge (whichever was greater) and 8 additional patients died on long-term follow-up (median time between surgery and death of 6.0 years [IQR 2.1–13.6 years]). Thus, the actuarial survival was 89%, 83%, 80%, and 69% at 1, 5, 10, and 15 years (Fig. 4). On univariate analysis, there were no factors associated with a higher mortality risk in our patient cohort.

## DISCUSSION

Intraoperative PA stent implantation is an alternative to percutaneous PA stent implantation and surgical pulmonary arterioplasty in many patients. There are several important advantages of intraoperative compared to transcatheter stent implantation, including the ability to implant stents that can be dilated ultimately to adult-size in small patients, while avoiding injury to peripheral vessels and hemodynamic compromise. In addition, because there is direct access and visualization of the branch

pulmonary arteries, the stents can be positioned with flaring of the proximal ends of the stent to facilitate future percutaneous redilation or subsequent stent reimplantation. The flaring increases the chance that a wire and catheter enter the stent lumen, rather than through a side-strut. Furthermore, intraoperative PA stenting eliminates radiation exposure associated with transcatheter PA stenting. The disadvantages of intraoperative PA stent implantation include the need for a median sternotomy, a high likelihood of patients requiring future stent dilation either due to somatic growth or in-stent stenosis, exposure to CPB, and the possibility of jailing side branches of the distal PA. Importantly, these last two disadvantages may be overcome using a hybrid approach with intraoperative fluoroscopy.

Intraoperative stent placement can be performed successfully in most patients. Of patients who underwent attempted stent placement, a stent was implanted in 99% of patients. Ninety-two percent of patients had  $\leq$  mild residual pulmonary stenosis by echocardiography at hospital discharge and for those patients without an echocardiogram but subsequent PA angiography, 91% of patients had  $\leq$  mild residual stenosis. Unfortunately, not all patients underwent subsequent angiography or additional imaging, like ventilation perfusions scans or cardiac MRI, to better quantitate procedural success. Given the retrospective nature of our study, this data is lacking but will be an important indication in any future prospective studies examining intraoperative PA stenting outcomes.

Additionally, intraoperative PA stent placement can be performed safely. The rates of vascular injury and stent embolization are lower than that reported for percutaneous stent implantation [17]. In our series, the total stent related complication rate was 4.4%, whereas the stent-related complication rate was 10% for percutaneous PA stent placement from a multi-center registry study [17] and 0–40% reported in a review article summarizing various reports of percutaneous PA stent implantation between 1991 and 2010 [18]. Importantly, no patient died during a procedure in which intraoperative stent placement was performed, and there were no deaths as a result of a complication from intraoperative stent placement. Although the 30-day mortality rate was high at 8.8%, this was related to the high-risk nature of the patients in whom intraoperative stent placement was performed. Three patients underwent intraoperative PA stent placement while already on ECMO support. All underwent successful stent implantation but all were unable to wean from ECMO support and died. Two other patients had care withdrawn for severe global hypoxic-ischemic brain injuries after right ventricle to PA conduit replacement operations with concomitant intraoperative PA stent implantation. Lastly, one patient underwent a neonatal repair for TOF and absent pulmonary valve,

**TABLE IV. Factors Associated with Reintervention**

Characteristics	Reintervention		HR 95% CI	P-value <sup>a</sup>	
	Yes (N = 30)	No (N = 38)			
Age at surgery, years					
< 18 months	13 (43.3)	9 (23.7)	2.97	1.40, 6.30	<b>0.005</b>
≥ 18 months	17 (56.7)	29 (76.3)	Ref		
Body surface area, m <sup>2</sup>					
< 0.47 m <sup>2</sup>	14 (46.7)	11 (28.9)	3.20	1.48, 6.89	<b>0.003</b>
≥ 0.47 m <sup>2</sup>	16 (53.3)	27 (71.1)	Ref		
Cardiac diagnosis					<b>0.01</b>
TOF with MAPCA	6 (20.0)	4 (10.5)	4.61	1.71, 12.5	<b>0.003</b>
TOF without MAPCA	8 (26.7)	8 (21.1)	1.76	0.75, 4.15	0.19
Non-TOF	16 (53.3)	26 (68.4)	Ref		
TOF vs. Non-TOF	14 (46.7)	12 (31.6)	2.36	1.14, 4.89	<b>0.02</b>
MAPCA vs. Non-MAPCA	6 (20.0)	5 (13.2)	3.56	1.37, 9.21	<b>0.01</b>
Indication for surgery					0.84
Isolated branch PS	6 (20.0)	5 (13.2)	1.10	0.44, 2.74	
Repair of other defect	24 (80.0)	33 (86.8)	Ref		
Etiology of PA stenosis					0.09
Acquired	24 (80.0)	33 (86.8)	Ref		
Congenital	6 (20.0)	5 (13.2)	2.23	0.88, 5.65	
Affected PA					0.10
Left	15 (50.0)	25 (65.8)	Ref		
Right	9 (30.0)	6 (15.8)	2.05	0.89, 4.72	0.09
Bilateral	6 (20.0)	7 (18.4)	2.47	0.93, 6.60	0.07
Location of stenosis/stent placement					0.23
Ostial or Proximal	25 (83.3)	33 (86.8)	Ref		
Distal	5 (16.7)	3 (7.9)	1.80	0.69, 4.75	
Unknown	0 (0.0)	2 (5.3)			
Prior intervention	9 (30.0)	15 (39.5)	0.84	0.38, 1.84	0.66

<sup>a</sup>P-value from univariate Cox regression.

Data are presented as N (%).

Bold value is used to emphasize statistically significant variables.

Abbreviations: HR, hazard ratio; CI, confidence interval; Ref, reference category; TOF, tetralogy of Fallot; MAPCA, multiple aortopulmonary collateral arteries; PS, pulmonary stenosis.

and later underwent intraoperative stent implantation at 3 months of life. The patient died at 1 year of age, 9 months after stent implantation due to complication from ventilator dependence related to severe bronchomalacia.

Eight patients died during long-term follow-up. Seven patients had single ventricle physiology and one had TOF with pulmonary atresia and MAPCA.

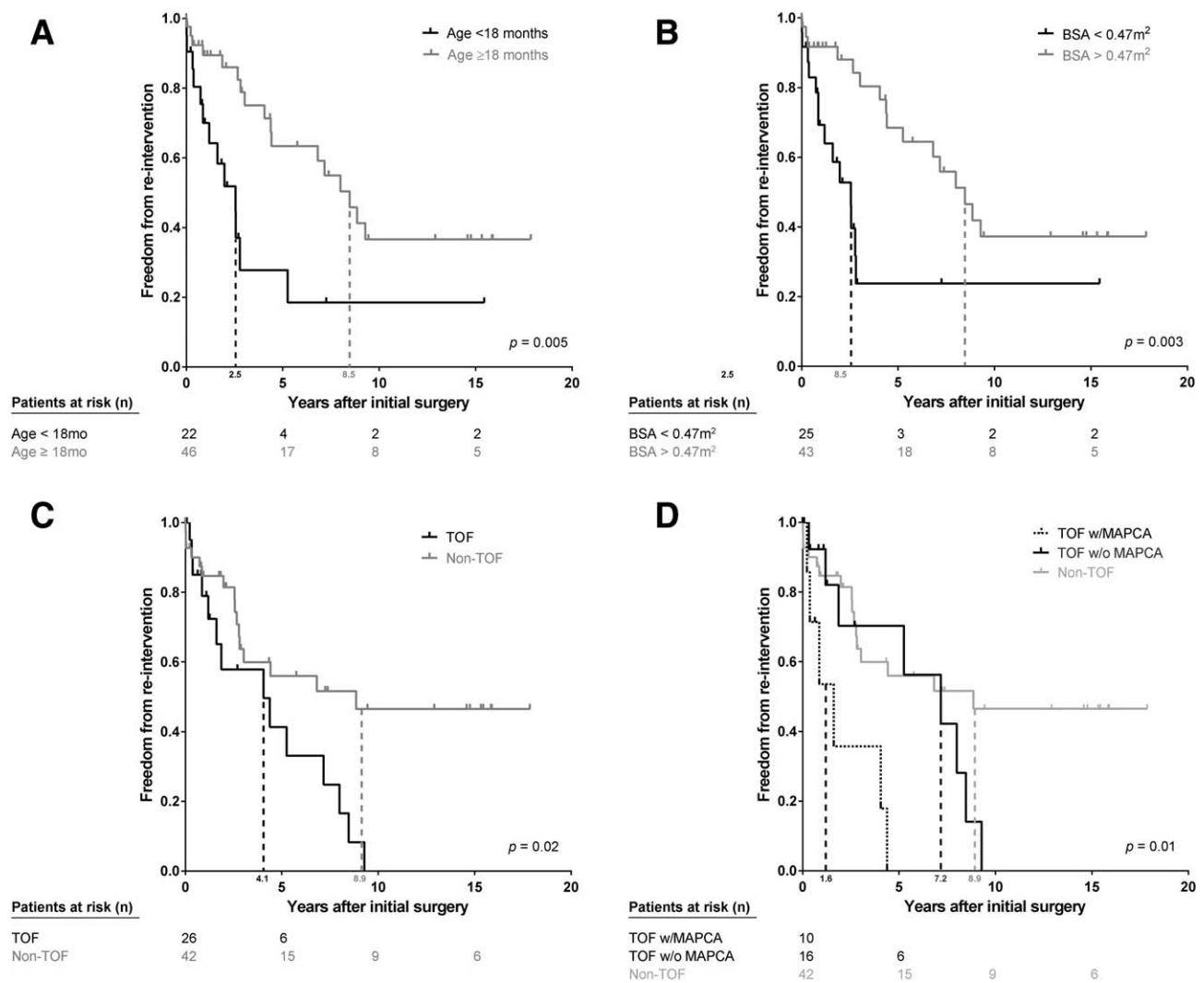
In our experience, nearly 44% of patients require reintervention of the PA stent during follow-up, and ~ 22% of patients require more than one reintervention. Our 2- and 5-year freedom from reintervention rates of 74% and 51% were nearly identical to those found in the one other study examining the long-term outcomes following intraoperative PA stent placement, in which the 2 and 5 year rates were 68% and 49%, respectively [15]. This is in close approximation with reports of percutaneous PA stent placement, where reintervention rates for stent dilation range from 26 to 66% during follow-up periods ranging from 0.9 to 7.2 years [18].

Reinterventions are expected whenever stents are placed in children given anticipated somatic growth. In

our study, 30% of reinterventions were performed for somatic growth. To support this further, two of the main risk factors for reintervention were age less than 18 months and body surface area less than 0.47 m<sup>2</sup> at initial implant.

A cardiac diagnosis of TOF with MAPCA is the other main risk factor for reintervention. This is not an unexpected finding, as the PAs in patients with MAPCA are often hypoplastic and require multiple interventions, especially during the first several years of life, compared to TOF patients without MAPCA [19,20]. Furthermore, patients with MAPCA are at a higher risk of developing in-stent stenosis secondary to neointimal proliferation [21]. These patients need close monitoring, and frequent reintervention should be expected.

Fortunately, the majority of patients who require reintervention after placement of an intraoperative PA stent can undergo reintervention via percutaneous techniques. We believe that this is facilitated by placing stents that can be serially balloon dilated to adult sizes and to flaring the proximal edge of the stent.



**Fig. 3. Freedom from first reintervention stratified by various clinical characteristics, including age (A), body surface area (B), cardiac diagnosis (C), and cardiac diagnosis with presence of MAPCAs (D). Median freedom from reintervention is represented for each group by the dotted lines. Abbreviations: BSA, body surface area; MAPCA, multiple aortopulmonary collateral arteries; non-TOF, diagnosis other than tetralogy of Fallot; TOF, tetralogy of Fallot.**

In this study, stents were placed on CPB by direct visualization alone, using presurgical angiography to determine stent sizes. The disadvantages to this approach include exposure to CPB and the inability to visualize, avoid, and/or treat side vessel jailing or vessel wall injury during stent implantation. In our cohort, the median CPB duration was 50 min (IQR 38–90 min) for patients undergoing isolated intraoperative PA stenting. Although difficult to determine CPB duration related to stent implantation when performed during additional cardiac procedures requiring CPB, anecdotally, most stents can be prepared and implanted in less than 15 min. There are alternative methods for placing intraoperative PA stents, such as hybrid implantation, using intraoperative angiography and fluoroscopy. This is particularly useful

for placing stents distally or at PA bifurcations. This helps to avoid jailing side branches and facilitates opening the side struts into side branches, if needed. Additionally, hybrid stent implantation can be done without using CPB, thereby eliminating the deleterious effects of bypass in patients not undergoing concomitant procedures. This does, however, expose patients to ionizing radiation. Thus, the risks and benefits of each modality should be considered on an individual basis.

Our current practice is to utilize intraoperative PA stent placement in patients with significant PA stenosis that is not amenable to balloon angioplasty or surgical patch arterioplasty (because of the nature of the lesion and/or poor response to prior angioplasty or arterioplasty) and who are undergoing a concomitant surgical

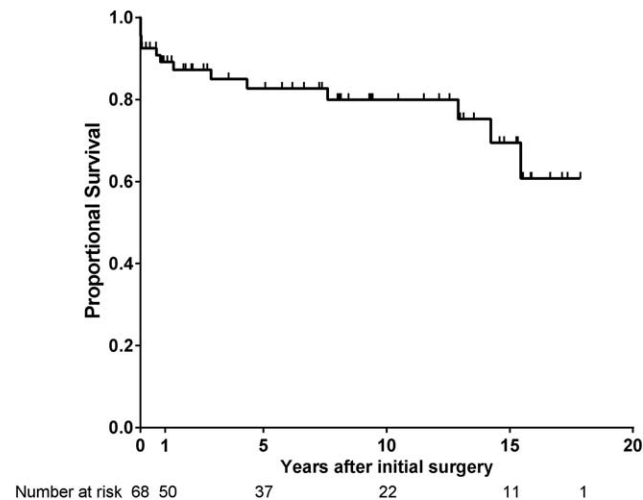
**TABLE V. Multivariable Analysis of Factors Associated with Reintervention**

Characteristics	AHR	95% CI	P-value <sup>a</sup>
Body surface area, m <sup>2</sup>			
< 0.47 m <sup>2</sup>	0.25	0.06, 1.08	0.06
≥ 0.47 m <sup>2</sup>	Ref		
Cardiac diagnosis			<b>0.01</b>
TOF with MAPCA	6.12	1.77, 2.12	<b>0.004</b>
TOF without MAPCA	3.10	1.10, 8.77	<b>0.03</b>
Non-TOF	Ref		
Etiology of PA stenosis			0.45
Acquired	Ref		
Congenital	0.64	0.20, 2.07	

<sup>a</sup>P-value from multivariable Cox regression.

Bold value is used to emphasize statistically significant variables.

Abbreviations: AHR, adjusted hazard ratio; CI, confidence interval; Ref, reference category; TOF, tetralogy of Fallot; MAPCA, multiple aortopulmonary collateral arteries.



**Fig. 4. Overall survival of the entire cohort (n = 68).**

procedure. Additionally, intraoperative PA stent placement is performed in patients in whom a transcatheter approach is not feasible, either due to the size of the peripheral vasculature or due to hemodynamic instability during attempted stent implantation. Importantly, there have been many advances in premounted stent technology in the last 5 years, allowing implantation using much smaller sheath sizes than are needed for unmounted large bare metal stents. Therefore the ultimate desired size of the stent needs to be taken into account when deciding on the appropriate therapy for a patient.

**Limitations**

Due to the retrospective nature of this study, it was not possible to recreate the decision-making that went into performing surgical arterioplasty versus surgical or

percutaneous stent implantation. We can make some inferences, however the exact indication for intraoperative stent implantation was sometimes unknown, and, thus, selection bias could impact our results. Likewise, stent choice and size, as well as the indications for reintervention are difficult to delineate retrospectively.

**CONCLUSION**

Intraoperative PA stent implantation is technically feasible with low procedural, stent-related complications. The rates of central vascular injury and stent embolization are lower than that reported for percutaneous stent implantation [17] and radiation exposure is eliminated. Similar to what is reported with percutaneous stent implantation, reintervention is common. When utilized in younger patients and patients with MAPCA, reintervention for either development of in-stent stenosis and/or somatic growth should be expected. This study expands the knowledge of intraoperative PA stent placement and the impact of stents placed largely during childhood on late outcomes.

**ACKNOWLEDGMENT**

None

**REFERENCES**

1. Bacha EA, Kreutzer J. Comprehensive management of branch pulmonary artery stenosis. *J Interv Cardiol* 2001;14:367–375.
2. Patel ND, Kenny D, Gonzalez I, Amin Z, Ilbawi MN, Hijazi ZM. Single-center outcome analysis comparing reintervention rates of surgical arterioplasty with stenting for branch pulmonary artery stenosis in a pediatric population. *Pediatr Cardiol* 2014;35:419–422.
3. Trant CA Jr., O’Laughlin MP, Ungerleider RM, Garson A. Jr. Cost-effectiveness analysis of stents, balloon angioplasty, and surgery for the treatment of branch pulmonary artery stenosis. *Pediatr Cardiol* 1997;18:339–344.
4. McGoon DC, Kincaid OW. Stenosis of branches of the pulmonary artery: Surgical repair. *Med Clin North Am* 1964;48:1083–1088.
5. Vida VL, Rito ML, Zucchetta F, Biffanti R, Padalino MA, Milanesi O, Stellin G. Pulmonary artery branch stenosis in patients with congenital heart disease. *J Cardiac Surg* 2013;28:439–445.
6. Bokenkamp R, Blom NA, De Wolf D, Francois K, Ottenkamp J, Hazekamp MG. Intraoperative stenting of pulmonary arteries. *Eur J Cardio-Thorac Surg* 2005;27:544–547.
7. Coles JG, Yemets I, Najm HK, Lukanich JM, Perron J, Wilson GJ, Rabinovitch M, Nykanen DG, Benson LN, Rebeyka IM, Trusler GA, Freedom RM, Williams WG. Experience with repair of congenital heart defects using adjunctive endovascular devices. *J Thorac Cardiovasc Surg* 1995;110:1513–1519; discussion 1519–1520.
8. Holzer RJ, Chisolm JL, Hill SL, Olshove V, Phillips A, Cheatham JP, Galantowicz M. Hybrid” stent delivery in the pulmonary circulation. *J Invasive Cardiol* 2008;20:592–598.
9. Menon SC, Cetta F, Dearani JA, Burkhart HA, Cabalka AK, Hagler DJ. Hybrid intraoperative pulmonary artery stent



- placement for congenital heart disease. *Am J Cardiol* 2008;102:1737–1741.
10. Mitropoulos FA, Laks H, Kapadia N, Gurvitz M, Levi D, Williams R, Plunkett M. Intraoperative pulmonary artery stenting: An alternative technique for the management of pulmonary artery stenosis. *Ann Thorac Surg* 2007;84:1338–1341; discussion 1342.
  11. Ungerleider RM, Johnston TA, O’Laughlin MP, Jagers JJ, Gaskin PR. Intraoperative stents to rehabilitate severely stenotic pulmonary vessels. *Ann Thorac Surg* 2001;71:476–481.
  12. Mendelsohn AM, Bove EL, Lupinetti FM, Crowley DC, Lloyd TR, Fedderly RT, Beekman RH. Intraoperative and percutaneous stenting of congenital pulmonary artery and vein stenosis. *Circulation* 1993;88:II210–II217.
  13. Lynch W, Boekholdt SM, Hazekamp MG, de Winter RJ, Koolbergen DR. Hybrid branch pulmonary artery stent placement in adults with congenital heart disease. *Interact Cardiovasc Thorac Surg* 2015;20:499–503.
  14. Sridhar A, Subramanian R, Premsekar R, Chidambaram S, Agarwal R, Manohar SRK, Cherian KM. Hybrid intraoperative pulmonary artery stenting in redo congenital cardiac surgeries. *Indian Heart J* 2014;66:45–51.
  15. Angtuaco MJ, Sachdeva R, Jaquiss RD, Morrow WR, Gossett JM, Fontenot E, Seib PM. Long-term outcomes of intraoperative pulmonary artery stent placement for congenital heart disease. *Catheter Cardiovasc Interv* 2011;77:395–399.
  16. Peters B, Ewert P, Berger F. The role of stents in the treatment of congenital heart disease: Current status and future perspectives. *Ann Pediatr Cardiol* 2009;2:3–23.
  17. Holzer RJ, Gauvreau K, Kreutzer J, Leahy R, Murphy J, Lock JE, Cheatham JP, Bergersen L. Balloon angioplasty and stenting of branch pulmonary arteries: Adverse events and procedural characteristics: Results of a multi-institutional registry. *Circ Cardiovasc Interv* 2011;4:287–296.
  18. Krisnanda C, Menahem S, Lane GK. Intravascular stent implantation for the management of pulmonary artery stenosis. *Heart Lung Circ* 2013;22:56–70.
  19. Carotti A, Albanese SB, Flipelli S, Rava L, Guccione P, Pongiglione G, Di Donato RM. Determinants of outcome after surgical treatment of pulmonary atresia with ventricular septal defect and major aortipulmonary collateral arteries. *J Thorac Cardiovasc Surg* 2010;140:1092–1103.
  20. Amark KM, Karamlou T, O’Carroll A, MacDonald C, Freedom RM, Yoo SH, Williams WG, Van Arsdell GS, Caldaerone CA, McCrindle BW. Independent factors associated with mortality, reintervention, and achievement of complete repair in children with pulmonary atresia with ventricular septal defect. *J Am Coll Cardiol* 2006;47:1149–1156.
  21. Hallbergson A, Lock JE, Marshall AC. Frequency and risk of in-stent stenosis following pulmonary artery stenting. *Am J Cardiol* 2014;113:541–545.