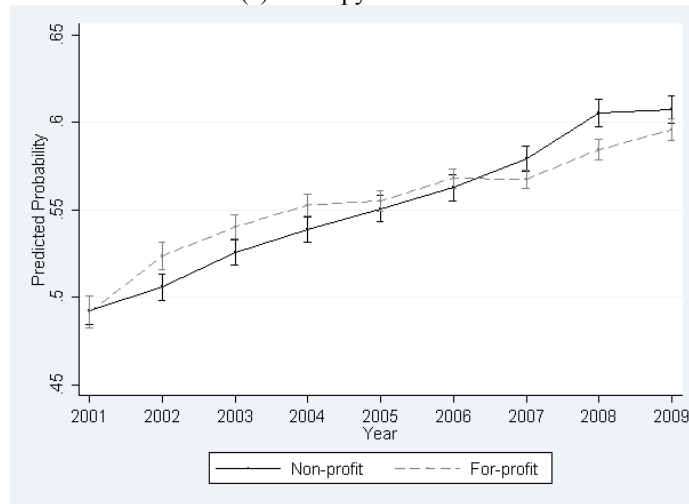


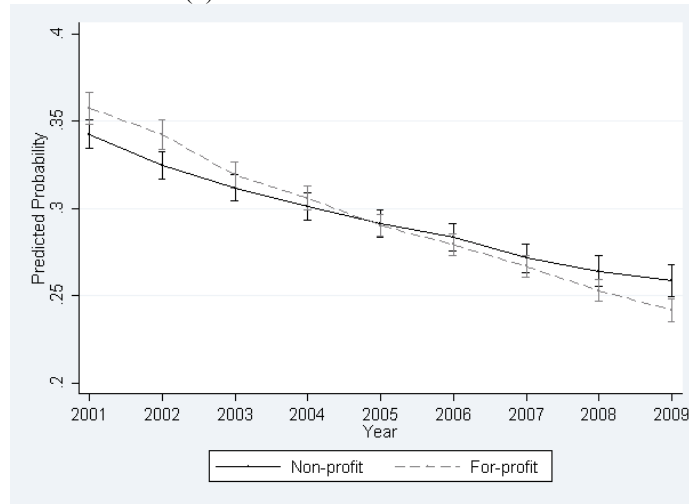
# Appendix

Figure A1: Types of Visits under the PPS

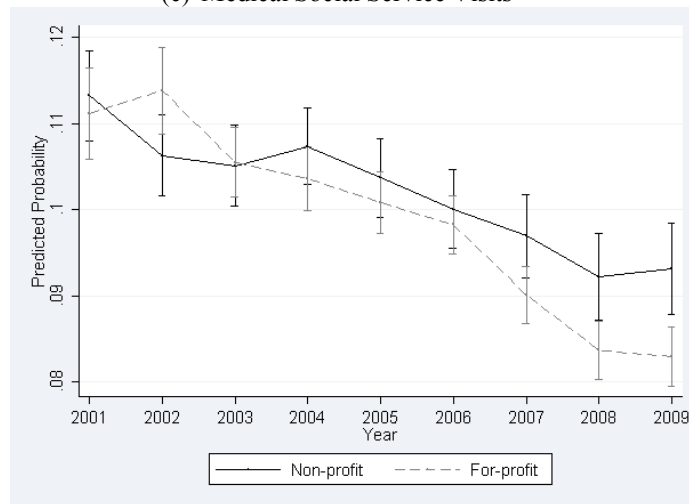
(a) Therapy Visits



(b) Home Health Aide Visits

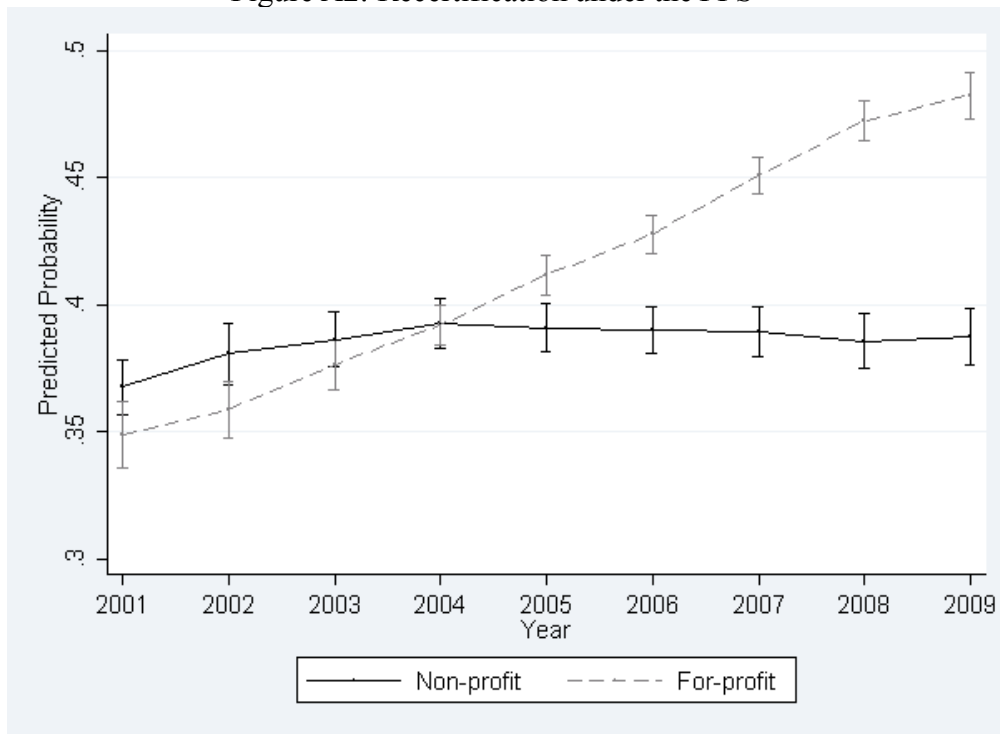


(c) Medical Social Service Visits



Note: Each graph displays the predicted probabilities that a patient would receive that type of visit at least once per episode.

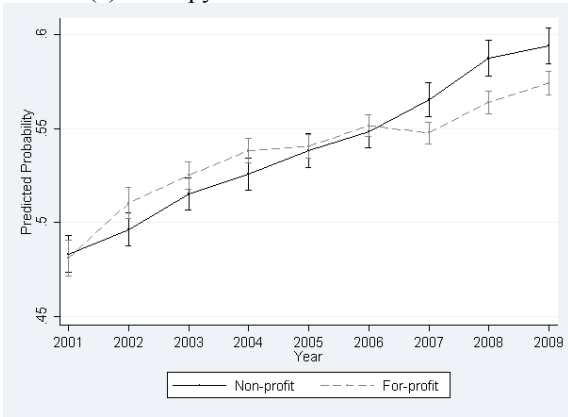
Figure A2: Recertification under the PPS



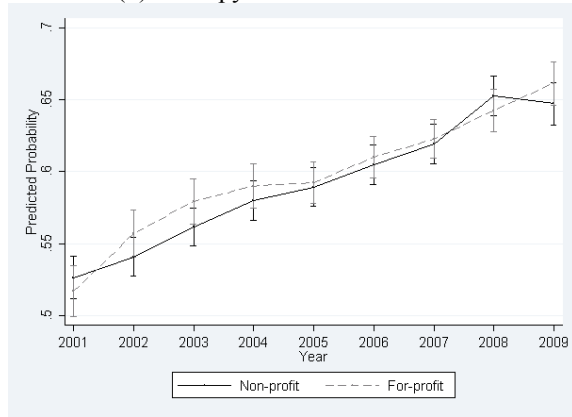
Note: This graph displays the predicted probabilities that each patient would get recertified for another episode of care.

Figure A3: Types of Visits across CON and Non-CON States

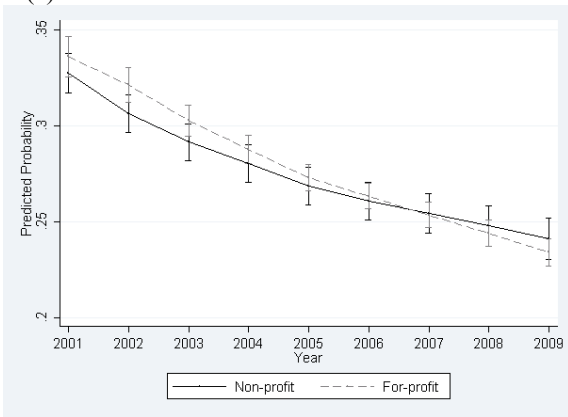
(a) Therapy Visits in Non-CON States



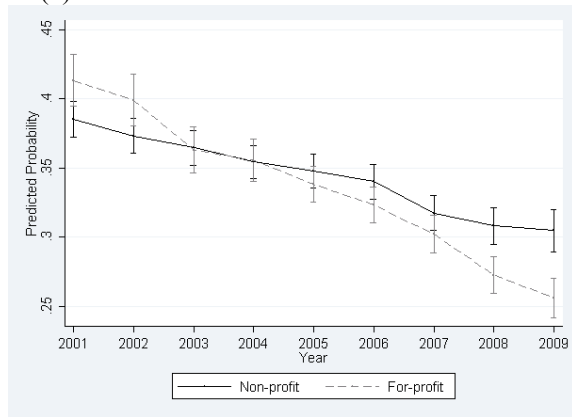
(b) Therapy Visits in CON States



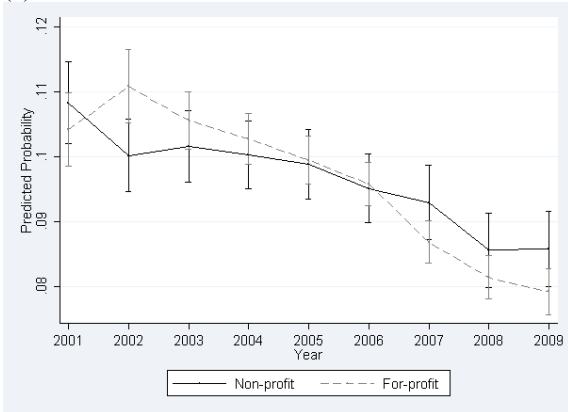
(c) Home Health Aide Visits in Non-CON States



(d) Home Health Aide Visits in CON States



(e) Medical Social Service Visits in Non-CON States



(f) Medical Social Service Visits in CON States

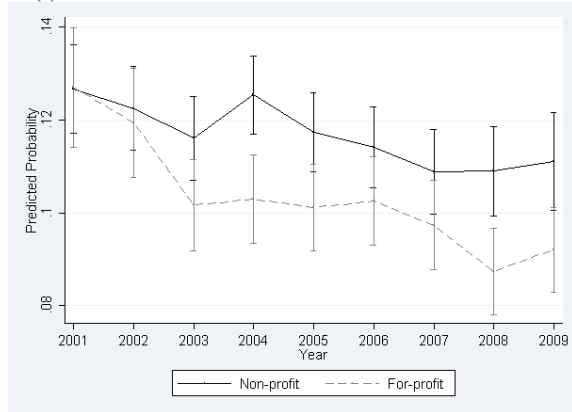
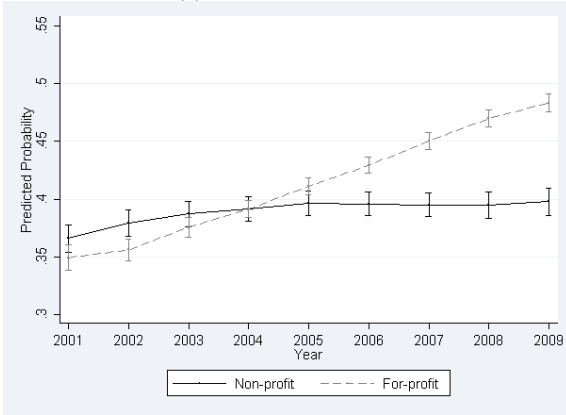


Figure A4: Recertification across CON and Non-CON States

(a) Non-CON States



(b) CON States

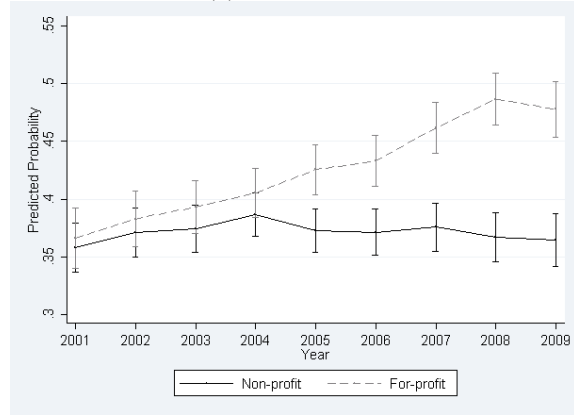


Table A1: Changes in Types of Visits under the PPS

Covariate	Therapy Visits	Home Health Aide Visits	Medical Social Service Visits
For-Profit	-0.0347*** (0.0071)	0.0308*** (0.0080)	-0.0230*** (0.0046)
Year Fixed Effects (2001)			
2002	0.0117*** (0.0032)	-0.0173*** (0.0032)	-0.0059*** (0.0021)
2003	0.0307*** (0.0038)	-0.0282*** (0.0037)	-0.0070*** (0.0024)
2004	0.0419*** (0.0044)	-0.0371*** (0.0044)	-0.0068*** (0.0025)
2005	0.0527*** (0.0048)	-0.0462*** (0.0046)	-0.0098*** (0.0028)
2006	0.0673*** (0.0049)	-0.0536*** (0.0047)	-0.0144*** (0.0028)
2007	0.0843*** (0.0052)	-0.0642*** (0.0048)	-0.0181*** (0.0030)
2008	0.1201*** (0.0055)	-0.0776*** (0.0049)	-0.0222*** (0.0031)
2009	0.1252*** (0.0053)	-0.0848*** (0.0054)	-0.0211*** (0.0033)
For-Profit × Year Fixed Effects (2001)			
2002	0.0219*** (0.0053)	-0.0006 (0.0055)	0.0076** (0.0034)
2003	0.0149** (0.0060)	-0.0166*** (0.0064)	-0.0013 (0.0036)
2004	0.0135** (0.0066)	-0.0205*** (0.0072)	-0.0053 (0.0039)
2005	0.0068 (0.0070)	-0.0320*** (0.0075)	-0.0073* (0.0041)
2006	0.0092 (0.0072)	-0.0422*** (0.0076)	-0.0063 (0.0041)
2007	-0.0064 (0.0075)	-0.0473*** (0.0077)	-0.0130*** (0.0042)
2008	-0.0188** (0.0079)	-0.0552*** (0.0077)	-0.0156*** (0.0043)
2009	-0.0061 (0.0076)	-0.0641*** (0.0080)	-0.0183*** (0.0045)

Continued on next page

Continued from previous page

Covariate	Therapy Visits	Home Health Aide Visits	Medical Social Service Visits
<b>Patient Characteristics</b>			
Age (65–69)			
70–79	0.0212*** (0.0021)	0.0520*** (0.0025)	0.0038*** (0.0010)
80–89	0.0339*** (0.0025)	0.0884*** (0.0029)	0.0119*** (0.0012)
90+	-0.0017 (0.0035)	0.1147*** (0.0048)	0.0042*** (0.0016)
Race (White)			
Black	-0.0500*** (0.0043)	0.0359*** (0.0052)	0.0252*** (0.0023)
Others	-0.0350*** (0.0052)	-0.0631*** (0.0083)	0.0170*** (0.0032)
Female	0.0194*** (0.0016)	0.0427*** (0.0020)	0.0023*** (0.0007)
Medicare Buy-In	-0.1184*** (0.0027)	-0.0386*** (0.0039)	-0.0033** (0.0016)
Referral Source (Others)			
Acute care	0.1963*** (0.0056)	-0.0642*** (0.0064)	0.0273*** (0.0029)
No acute care	-0.0339*** (0.0056)	-0.0201*** (0.0061)	-0.0015 (0.0023)
Health Condition			
Diabetes	-0.0834*** (0.0026)	-0.0367*** (0.0029)	-0.0039*** (0.0011)
Hypertension	-0.0547*** (0.0019)	-0.0059*** (0.0021)	0.0017* (0.0010)
Heart failure	-0.0976*** (0.0026)	-0.0061* (0.0031)	-0.0062*** (0.0012)
Ulcer	-0.1531*** (0.0032)	0.0264*** (0.0040)	-0.0043*** (0.0014)
Osteoporosis	0.0800*** (0.0037)	-0.0024 (0.0030)	-0.0187*** (0.0011)
Cardiac dysrhythmia	-0.0640*** (0.0023)	-0.0068*** (0.0026)	-0.0004 (0.0011)
Arthritis	-0.0848*** (0.0051)	0.0611*** (0.0058)	-0.0276*** (0.0019)

Continued on next page

Continued from previous page

Covariate	Therapy Visits	Home Health Aide Visits	Medical Social Service Visits
Cancer	-0.1679*** (0.0029)	-0.0146*** (0.0031)	0.0144*** (0.0017)
Mental disorder	-0.0592*** (0.0025)	0.0431*** (0.0031)	0.0438*** (0.0016)
Pneumonia	0.0055* (0.0031)	-0.0031 (0.0029)	0.0142*** (0.0019)
Stroke	0.0001 (0.0047)	-0.0040 (0.0047)	0.0151*** (0.0027)
Dementia	-0.0446*** (0.0048)	0.0338*** (0.0061)	0.0378*** (0.0028)
Chronic ischaemic heart disease	-0.0653*** (0.0026)	-0.0124*** (0.0028)	-0.0018 (0.0011)
Charlson Comorbidity	0.0127*** (0.0019)	0.0506*** (0.0022)	0.0111*** (0.0008)
<b>Agency Characteristics</b>			
Institution-Affiliated	-0.0090 (0.0057)	0.0028 (0.0061)	0.0039 (0.0045)
Number of Patients	-0.0000** (0.0000)	0.0001*** (0.0000)	0.0000*** (0.0000)
<b>Quarter (1<sup>st</sup> Quarter)</b>			
2 <sup>nd</sup> Quarter	0.0145*** (0.0011)	-0.0078*** (0.0010)	0.0000 (0.0007)
3 <sup>rd</sup> Quarter	0.0074*** (0.0011)	-0.0050*** (0.0010)	-0.0005 (0.0007)
4 <sup>th</sup> Quarter	0.0158*** (0.0012)	-0.0105*** (0.0011)	-0.0011 (0.0007)
Constant	0.5581*** (0.0079)	0.2512*** (0.0085)	0.0988*** (0.0042)
No. of Observations	1,424,839	1,424,839	1,424,839

Robust standard errors in parentheses.

\*\*\* p<0.01, \*\* p<0.05, \* p<0.1

Table A2: Changes in Recertification under the PPS

Covariate	Recertification
For-Profit	0.0201** (0.0082)
Year Fixed Effects (2001)	
2002	0.0182*** (0.0034)
2003	0.0289*** (0.0040)
2004	0.0432*** (0.0044)
2005	0.0451*** (0.0046)
2006	0.0405*** (0.0053)
2007	0.0388*** (0.0055)
2008	0.0256*** (0.0059)
2009	0.0255*** (0.0061)
For-Profit × Year Fixed Effects (2001)	
2002	-0.0058 (0.0058)
2003	0.0070 (0.0069)
2004	0.0225*** (0.0074)
2005	0.0468*** (0.0078)
2006	0.0682*** (0.0083)
2007	0.0927*** (0.0085)
2008	0.1227*** (0.0090)
2009	0.1301*** (0.0091)

Continued on next page



Continued from previous page

Covariate	Recertification
Visit Splines (0–5)	
5–10	0.0254*** (0.0009)
10–15	–0.0182*** (0.0009)
15–20	0.0267*** (0.0007)
20–25	0.0160*** (0.0007)
25–30	0.0057*** (0.0008)
30–35	0.0107*** (0.0009)
35–40	0.0002 (0.0010)
40–45	0.0092*** (0.0011)
45–50	0.0084*** (0.0013)
50–55	0.0015 (0.0016)
55–60	0.0069*** (0.0017)
61+	0.0017** (0.0008)
<b>Patient Characteristics</b>	
Age (65–69)	
70–79	0.0101*** (0.0022)
80–89	0.0228*** (0.0025)
90+	0.0444*** (0.0035)
Race (White)	
Black	0.0621*** (0.0047)
Others	–0.0426*** (0.0074)

Continued on next page

Continued from previous page

Covariate	Recertification
Female	-0.0005 (0.0016)
Medicare Buy-In	0.0994*** (0.0035)
Referral Source (Others)	
Acute care	-0.2106*** (0.0062)
No acute care	0.0107* (0.0060)
Health Condition	
Diabetes	0.0189*** (0.0025)
Hypertension	0.0148*** (0.0022)
Heart failure	0.0431*** (0.0027)
Ulcer	0.1048*** (0.0031)
Osteoporosis	-0.0077** (0.0035)
Cardiac dysrhythmia	0.0332*** (0.0026)
Arthritis	0.1621*** (0.0052)
Cancer	0.0119*** (0.0028)
Mental disorder	0.0659*** (0.0028)
Pneumonia	-0.0398*** (0.0027)
Stroke	-0.0339*** (0.0042)
Dementia	0.0458*** (0.0053)
Chronic ischaemic heart disease	0.0027 (0.0031)
Charlson Comorbidity	0.0449*** (0.0019)

Continued on next page

Continued from previous page

---

<b>Agency Characteristics</b>	
Institution-Affiliated	-0.0350*** (0.0071)
Number of Patients	0.0000 (0.0000)
<b>Quarter (1<sup>st</sup> Quarter)</b>	
2 <sup>nd</sup> Quarter	-0.0084*** (0.0010)
3 <sup>rd</sup> Quarter	0.0075*** (0.0010)
4 <sup>th</sup> Quarter	0.0042*** (0.0011)
Constant	-0.0134 (0.0118)
No. of Observations	1,424,839

---

Robust standard errors in parentheses.

\*\*\* p<0.01, \*\* p<0.05, \* p<0.1