

SUPPLEMENTARY FIGURES

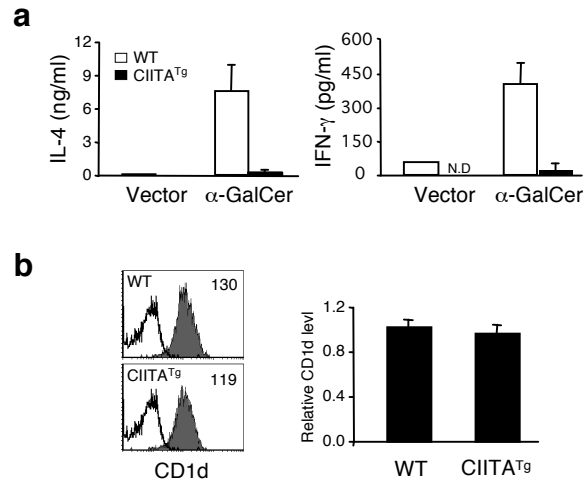


Figure S1 Cytokine production and CD1d expression in CIITA^{Tg} mice. (a) Systemic administration of α -GalCer does not induce the cytokine production in CIITA^{Tg} mice. Serum IL-4 and IFN- γ levels from two pairs of WT and CIITA^{Tg} mice were determined by ELISA. (b) Surface expression of CD1d on CIITA^{Tg} DP thymocytes. The negative control is indicated as unfilled lines and the numbers represent the mean fluorescent intensity of CD1d staining. The bar graphs represent the mean values \pm SD from 7-8 mice per group.

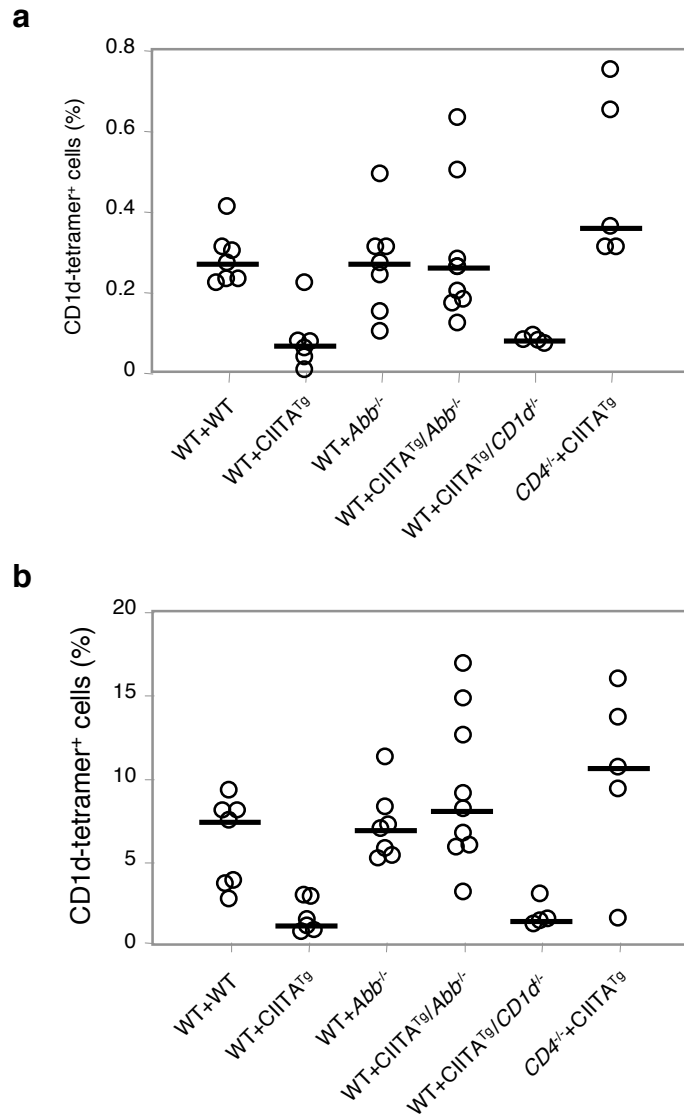


Figure S2 Percentage of thymic (a) and liver (b) iNKT cells in the indicated mixed BM chimeric mice. Data are shown as mean \pm SD from 7 mice from the WT+WT \rightarrow B6.SJL group; 6 from WT+CIITA^{Tg} \rightarrow B6.SJL; 7 from WT+Abb^{-/-} \rightarrow B6.SJL; 9 from WT+CIITA^{Tg}/Abb^{-/-} \rightarrow B6.SJL, 4 from WT+ CIITA^{Tg}/CD1d^{-/-} \rightarrow B6.SJL, and 5 from the CD4^{-/-}+CIITA^{Tg} \rightarrow B6.SJL transfers. Chimeras were analyzed 2-3 months post BM transplantation. Each symbol represents an individual mouse and the bars mark the median percentages of iNKT cells for each group of chimeric mice.