

Supplementary Table of Liver Disease Diagnosis: ICD 9 codes used to define Liver Disease Cohort

<b>ICD9Code</b>	<b>First_ICD9Description</b>
<b>006.3</b>	AMEBIC LIVER ABSCESS
<b>070.0</b>	VIRAL HEPATITIS A WITH HEPATIC COMA
<b>070.2</b>	VIRAL HEPATITIS B WITH HEPATIC COMA
<b>070.20</b>	VIRAL HEPATITIS B WITH HEPATIC COMA, ACUTE OR UNSPECIFIED, W/O MENTION OF HEPATITIS DELTA
<b>070.21</b>	VIRAL HEPATITIS B WITH HEPATIC COMA, ACUTE OR UNSPECIFIED, WITH HEPATITIS DELTA
<b>070.22</b>	CHRONIC VIRAL HEPATITIS B W/ HEPATIC COMA W/O MENTION OF HEPATITIS DELTA
<b>070.23</b>	CHRONIC VIRAL HEPATITIS B W/ HEPATIC COMA W/ HEPATITIS DELTA
<b>070.3</b>	VIRAL HEPATITIS B WITHOUT MENTION OF HEPATIC COMA
<b>070.30</b>	VIRAL HEPATITIS B W/O MENTION OF HEPATIC COMA, ACUTE OR UNSPECIFIED, W/O MENTION OF HEPATITIS DELTA
<b>070.32</b>	CHRONIC VIRAL HEPATITIS B W/O MENTION OF HEPATIC COMA W/O MENTION OF HEPATITIS DELTA
<b>070.33</b>	CHRONIC VIRAL HEPATITIS B W/O MENTION OF HEPATIC COMA W/ HEPATITIS DELTA
<b>070.4</b>	OTHER SPECIFIED VIRAL HEPATITIS WITH HEPATIC COMA
<b>070.41</b>	ACUTE HEPATITIS C WITH HEPATIC COMA
<b>070.42</b>	HEPATITIS DELTA W/O MENTION OF ACTIVE HEPATITIS B DISEASE WITH HEPATIC COMA
<b>070.43</b>	HEPATITIS E WITH HEPATIC COMA
<b>070.44</b>	CHRONIC HEPATITIS C W/ HEPATIC COMA
<b>070.49</b>	OTHER SPECIFIED VIRAL HEPATITIS WITH HEPATIC COMA

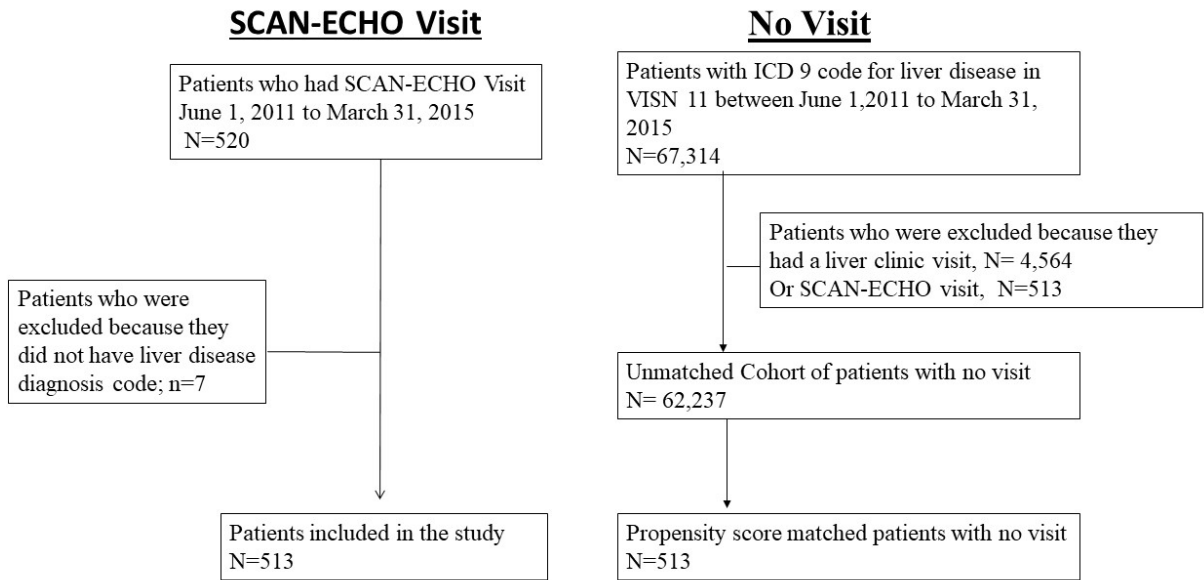
<b>070.5</b>	OTHER SPECIFIED VIRAL HEPATITIS WITHOUT MENTION OF HEPATIC COMA
<b>070.51</b>	ACUTE HEPATITIS C WITHOUT MENTION OF HEPATIC COMA
<b>070.52</b>	HEPATITIS DELTA W/O MENTION OF ACTIVE HEPATITIS B DISEASE OR HEPATIC COMA
<b>070.53</b>	HEPATITIS E W/O MENTION OF HEPATIC COMA
<b>070.54</b>	CHRONIC HEPATITIS C W/O MENTION OF HEPATIC COMA
<b>070.59</b>	OTHER SPECIFIED VIRAL HEPATITIS W/O MENTION OF HEPATIC COMA
<b>070.6</b>	UNSPECIFIED VIRAL HEPATITIS WITH HEPATIC COMA
<b>070.70</b>	UNSPECIFIED VIRAL HEPATITIS C WITHOUT HEPATIC COMA
<b>070.71</b>	UNSPECIFIED VIRAL HEPATITIS C WITH HEPATIC COMA
<b>070.9</b>	UNSPECIFIED VIRAL HEPATITIS WITHOUT MENTION OF HEPATIC COMA
<b>072.71</b>	MUMPS HEPATITIS
<b>091.62</b>	SECONDARY SYPHILITIC HEPATITIS
<b>121.1</b>	CLONORCHIASIS
<b>130.5</b>	HEPATITIS DUE TO TOXOPLASMOSIS
<b>155.0</b>	MALIGNANT NEOPLASM OF LIVER, PRIMARY
<b>155.1</b>	MALIGNANT NEOPLASM OF INTRAHEPATIC BILE DUCTS
<b>155.2</b>	MALIGNANT NEOPLASM OF LIVER, NOT SPECIFIED AS PRIMARY OR SECONDARY
<b>202.80</b>	OTHER MALIGNANT LYMPHOMAS, UNSPECIFIED SITE, EXTRANODAL AND SOLID ORGAN SITES
<b>211.5</b>	BENIGN NEOPLASM OF LIVER AND BILIARY PASSAGES
<b>228.09</b>	HEMANGIOMA OF OTHER SITES
<b>230.8</b>	CARCINOMA IN SITU OF LIVER AND BILIARY SYSTEM
<b>273.4</b>	ALPHA-1-ANTITRYPSIN DEFICIENCY
<b>275.0</b>	DISORDERS OF IRON METABOLISM

<b>275.01</b>	HEREDITARY HEMOCHROMATOSIS
<b>275.02</b>	HEMOCHROMATOSIS DUE TO REPEATED RED BLOOD CELL TRANSFUSIONS
<b>275.03</b>	OTHER HEMOCHROMATOSIS
<b>275.09</b>	OTHER DISORDERS OF IRON METABOLISM
<b>275.1</b>	DISORDERS OF COPPER METABOLISM
<b>277.3</b>	AMYLOIDOSIS
<b>277.30</b>	AMYLOIDOSIS, UNSPECIFIED
<b>277.4</b>	DISORDERS OF BILIRUBIN EXCRETION
<b>305.00</b>	ALCOHOL ABUSE, UNSPECIFIED DRINKING BEHAVIOR
<b>452.</b>	PORTAL VEIN THROMBOSIS
<b>453.0</b>	BUDD-CHIARI SYNDROME
<b>456.0</b>	ESOPHAGEAL VARICES WITH BLEEDING
<b>456.1</b>	ESOPHAGEAL VARICES WITHOUT MENTION OF BLEEDING
<b>456.20</b>	ESOPHAGEAL VARICES IN DISEASES CLASSIFIED ELSEWHERE, WITH BLEEDING
<b>456.21</b>	ESOPHAGEAL VARICES IN DISEASES CLASSIFIED ELSEWHERE, WITHOUT MENTION OF BLEEDING
<b>456.8</b>	VARICES OF OTHER SITES
<b>567.23</b>	SPONTANEOUS BACTERIAL PERITONITIS
<b>570.</b>	ACUTE AND SUBACUTE NECROSIS OF LIVER
<b>571.0</b>	ALCOHOLIC FATTY LIVER
<b>571.2</b>	ALCOHOLIC CIRRHOSIS OF LIVER
<b>571.3</b>	ALCOHOLIC LIVER DAMAGE, UNSPECIFIED
<b>571.40</b>	CHRONIC HEPATITIS, UNSPECIFIED
<b>571.5</b>	CIRRHOSIS OF LIVER WITHOUT MENTION OF ALCOHOL
<b>571.6</b>	BILIARY CIRRHOSIS
<b>571.8</b>	OTHER CHRONIC NONALCOHOLIC LIVER DISEASE

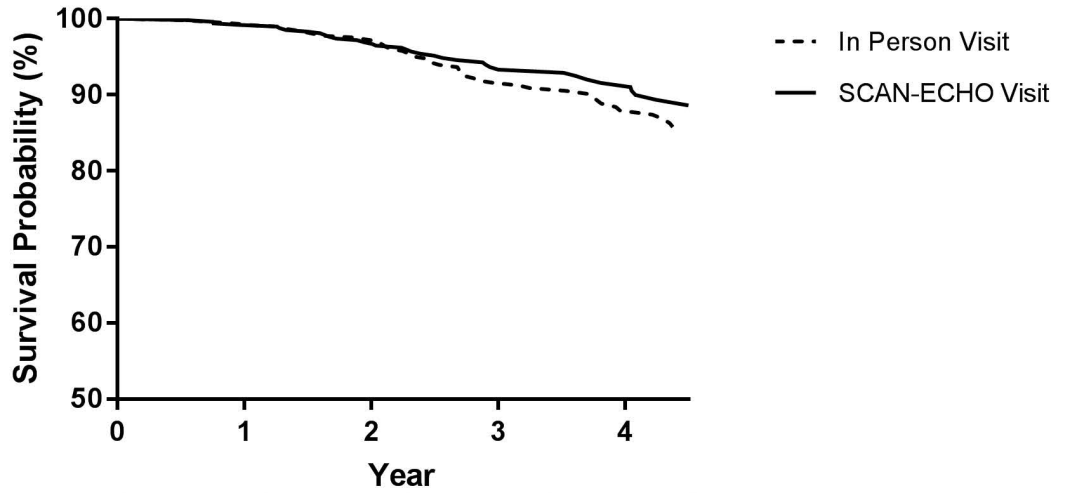
<b>571.9</b>	UNSPECIFIED CHRONIC LIVER DISEASE WITHOUT MENTION OF ALCOHOL
<b>572.0</b>	ABSCESS OF LIVER
<b>572.2</b>	HEPATIC COMA
<b>572.3</b>	PORTAL HYPERTENSION
<b>572.4</b>	HEPATORENAL SYNDROME
<b>573.0</b>	CHRONIC PASSIVE CONGESTION OF LIVER
<b>573.3</b>	HEPATITIS, UNSPECIFIED
<b>573.8</b>	OTHER SPECIFIED DISORDERS OF LIVER
<b>573.9</b>	UNSPECIFIED DISORDER OF LIVER
<b>574.20</b>	CALCULUS OF GALLBLADDER WITHOUT MENTION OF CHOLECYSTITIS, WITHOUT MENTION OF OBSTRUCTION
<b>576.0</b>	POSTCHOLECYSTECTOMY SYNDROME
<b>576.8</b>	OTHER SPECIFIED DISORDERS OF BILIARY TRACT
<b>576.9</b>	UNSPECIFIED DISORDER OF BILIARY TRACT
<b>646.70</b>	LIVER DISORDERS IN PREGNANCY, UNSPECIFIED AS TO EPISODE OF CARE
<b>647.60</b>	OTHER VIRAL DISEASES OF MOTHER, COMPLICATING PREGNANCY, CHILDBIRTH, OR THE PUERPERIUM, UNSPECIFIED AS TO EPISODE OF
<b>751.61</b>	BILIARY ATRESIA, CONGENITAL
<b>782.4</b>	JAUNDICE, UNSPECIFIED, NOT OF NEWBORN
<b>789.1</b>	HEPATOMEGALY
<b>789.5</b>	ASCITES
<b>789.59</b>	OTHER ASCITES
<b>789.9</b>	OTHER SYMPTOMS INVOLVING ABDOMEN AND PELVIS
<b>790.5</b>	OTHER NONSPECIFIC ABNORMAL SERUM ENZYME LEVELS
<b>793.3</b>	NONSPECIFIC ABNORMAL FINDINGS ON RADIOLOGICAL AND OTHER EXAMINATION OF BILIARY TRACT

<b>793.4</b>	NONSPECIFIC ABNORMAL FINDINGS ON RADIOLOGICAL AND OTHER EXAMINATION OF GASTROINTESTINAL TRACT
<b>794.8</b>	NONSPECIFIC ABNORMAL RESULTS OF FUNCTION STUDY OF LIVER
<b>996.82</b>	COMPLICATIONS OF TRANSPLANTED LIVER
<b>V10.07</b>	PERSONAL HISTORY OF MALIGNANT NEOPLASM OF LIVER
<b>V42.7</b>	LIVER REPLACED BY TRANSPLANT
<b>V82.9</b>	SCREENING FOR UNSPECIFIED CONDITION

Supplementary Figure 1: Enrollment and exclusions



Supplementary Figure 2a: Absolute standardized mean difference of the baseline covariates between patients with a SCAN-ECHO visit vs in person visit



<b>Number at risk</b>					
In Person Visit	511	460	393	290	192
SCAN-ECHO	511	474	407	294	182
Year	0	1	2	3	4

Supplementary Figure 2b: Kaplan-Meier Survival. Survival curve between those with a SCAN-ECHO vs propensity matched cohort of patients with in person visit

