



Are B cells altered in the decidua of women with preterm or term labor?

Yaozhu Leng^{1,2} | Roberto Romero^{1,3,4,5}  | Yi Xu^{1,2} | Jose Galaz^{1,6} | Rebecca Slutsky¹ | Marcia Arenas-Hernandez^{1,2} | Valeria Garcia-Flores^{1,2} | Kenichiro Motomura^{1,2} | Sonia S. Hassan^{1,2,7} | Andrea Reboldi⁸ | Nardhy Gomez-Lopez^{1,2,9,10} 

¹Perinatology Research Branch, Division of Obstetrics and Maternal-Fetal Medicine, Division of Intramural Research, Eunice Kennedy Shriver National Institute of Child Health and Human Development, National Institutes of Health, U.S. Department of Health and Human Services, Bethesda, Maryland, and Detroit, Michigan

²Department of Obstetrics and Gynecology, Wayne State University School of Medicine, Detroit, Michigan

³Department of Obstetrics and Gynecology, University of Michigan, Ann Arbor, Michigan

⁴Department of Epidemiology and Biostatistics, Michigan State University, East Lansing, Michigan

⁵Center for Molecular Medicine and Genetics, Wayne State University, Detroit, Michigan

⁶Department of Obstetrics and Gynecology, Faculty of Medicine, Pontificia Universidad Católica de Chile, Santiago, Chile

⁷Department of Physiology, Wayne State University School of Medicine, Detroit, Michigan

⁸Department of Pathology, University of Massachusetts Medical School, Worcester, Massachusetts

⁹C.S. Mott Center for Human Growth and Development, Wayne State University, Detroit, Michigan

¹⁰Department of Immunology, Microbiology and Biochemistry, Wayne State University School of Medicine, Detroit, Michigan

Correspondence

Nardhy Gomez-Lopez, Department of Obstetrics and Gynecology, Wayne State University School of Medicine, Perinatology Research Branch, NICHD/NIH/DHHS, Detroit, MI.
Email: nardhy.gomez-lopez@wayne.edu

Funding information

Eunice Kennedy Shriver National Institute of Child Health and Human Development, National Institutes of Health, U.S. Department of Health and Human Services (NICHD/NIH/DHHS), Grant/Award Number: HHSN275201300006C; Wayne State University Perinatal Initiative in Maternal, Perinatal and Child Health

Problem: The immunophenotype of B cells at the maternal-fetal interface (decidua) in labor at term and preterm labor is poorly understood.

Method of study: Decidual tissues were obtained from women with preterm or term labor and from non-labor gestational age-matched controls. Immunophenotyping of decidual B cells was performed using multicolor flow cytometry.

Results: (a) In the absence of acute or chronic chorioamnionitis, total B cells were more abundant in the decidua parietalis of women who delivered preterm than in those who delivered at term, regardless of the presence of labor; (b) decidual transitional and naïve B cells were the most abundant B-cell subsets; (c) decidual B1 B cells were increased in women with either labor at term or preterm labor and chronic chorioamnionitis compared to those without this placental lesion; (d) decidual transitional B cells were reduced in women with preterm labor compared to those without labor; (e) naïve, class-switched, and non-class-switched B cells in the decidual tissues underwent mild alterations with the process of preterm labor; (f) decidual plasmablasts seemed to increase in women with either labor at term or preterm labor with chronic chorioamnionitis; and (g) decidual B cells expressed high levels of interleukin (IL)-12, IL-6, and/or IL-35.

Conclusion: Total B cells are not increased with the presence of preterm or term labor; yet, specific subsets (B1 and plasmablasts) undergo alterations in women with

chronic chorioamnionitis. Therefore, B cells are solely implicated in the pathological process of preterm labor in a subset of women with chronic inflammation of the placenta. These findings provide insight into the immunology of the maternal-fetal interface in preterm and term labor.

KEYWORDS

B1 B cells, chronic chorioamnionitis, funisitis, memory B cells, naïve B cells, placental inflammation, plasmablasts, pregnancy, transitional B cells

1 | INTRODUCTION

Preterm labor, which commonly precedes preterm birth,^{1,2} is a syndrome involving multiple pathological processes.^{3,4} Among the known mechanisms, pathological inflammation is the best-characterized causal link to preterm labor and birth.⁵⁻¹⁴ To date, the most studied causes of pathological inflammation leading to preterm labor have been (a) intra-amniotic infection/inflammation resulting from microbial invasion of the amniotic cavity^{5,7,8,15-33} and (b) intra-amniotic inflammation without detectable microorganisms (ie, sterile intra-amniotic inflammation) identified by using both molecular and conventional microbiological techniques,^{32,34-38} proposed to be due to endogenous danger signals, or alarmins.³⁹⁻⁴⁹ Most research concerning inflammation-induced preterm labor has therefore focused on the innate limb of immunity.⁵⁰⁻⁷³ Yet, several studies reported strong evidence that T cells, the primary cellular component of the adaptive immune system, are present at the maternal-fetal interface.⁷⁴⁻⁸⁹ More recently, we provided evidence indicating that T cells are also implicated in the mechanisms that lead to labor at term^{84,85} and spontaneous preterm labor.⁹⁰⁻⁹⁷ However, the main humoral component of adaptive immunity, B cells, has been less investigated in the context of labor at term or preterm labor.

B cells were first observed in the placental bed of women early in gestation,⁹⁸ which was confirmed by later studies.^{99,100} During early pregnancy, B cells are implicated in the mechanisms of maternal-fetal tolerance.¹⁰¹⁻¹¹⁵ Decidual B cells modestly increase between 27 and 33 weeks of gestation followed by a slight decline at term.¹⁰⁰ Multiple studies reported that B cells are present at the human maternal-fetal interface (ie, decidua basalis and decidua parietalis) in the absence of labor at term.^{76,77,99,116,117} Moreover, B cells seem to be increased in the decidua basalis,⁷⁷ but not in the decidua parietalis,^{77,116} during the physiological process of labor at term. A recent study provided evidence indicating a role for B cells in the pathogenesis of preterm labor: The results showed an increased proportion of B cells in the decidua parietalis of women who underwent spontaneous preterm labor compared to those with labor at term.¹¹⁸ However, the above mentioned study did not include gestational age-matched controls, allowing for further investigation of the B-cell compartment at the human maternal-fetal interface in both labor at term and preterm labor.

In the current study, we performed immunophenotyping of the decidua basalis and decidua parietalis of women who underwent the

physiological process of labor at term or the syndrome of preterm labor leading to preterm birth. Decidual tissues from gestational age-matched controls were also included. In addition, the B-cell subsets in acute and chronic maternal inflammatory lesions of the placenta were compared. Lastly, the production of cytokines by decidual B cells was determined.

2 | MATERIALS AND METHODS

2.1 | Human subjects, clinical specimens, and definitions

Samples of the human placental basal plate (maternal side of the placenta, decidua basalis) and chorioamnionic membranes (amnion, chorion, and decidua parietalis) were collected from patients within 30 minutes after delivery at Hutzel Women's Hospital in the Detroit Medical Center, Detroit, MI, USA, in partnership with Wayne State University School of Medicine and the Perinatology Research Branch, an intramural program of the Eunice Kennedy Shriver National Institute of Child Health and Human Development, National Institutes of Health, U.S. Department of Health and Human Services (NICHD/NIH/DHHS), Detroit, MI, USA. Case-matched maternal and cord blood samples were also collected in some cases. The collection and utilization of biological materials for research purposes were approved by the Institutional Review Boards of Wayne State University and NICHD. All participating women provided written informed consent prior to the collection of samples.

The study groups included women who delivered at term with labor (TIL) or without labor (TNL) and women who delivered preterm with labor (PTL) or without labor (PTNL). Preterm birth was defined as delivery before 37 weeks of gestation. Labor was defined by the presence of regular uterine contractions at a frequency of at least two contractions every 10 minutes with cervical changes resulting in delivery. The TIL and PTL study groups were subdivided based on the presence of acute histologic chorioamnionitis (ACA) and chronic histologic chorioamnionitis (CCA) (see "Section 2.2" for diagnostic criteria). Patients with neonates having congenital or chromosomal abnormalities were excluded from this study. The clinical and demographic characteristics of the study population are shown in Tables 1 and 2. Both the decidua basalis and decidua parietalis were collected from most patients; however, the decidua basalis was not available

TABLE 1 Clinical and demographic characteristics of the patient population used to perform immunophenotyping of the decidua basalis

	Term without labor (n = 15)	Term labor (n = 14)	Term labor with ACA (n = 10)	Term labor with CCA (n = 13)	Preterm without labor (n = 4)	Preterm labor (n = 8)	Preterm labor with ACA (n = 4)	Preterm labor with CCA (n = 14)	P-value
Maternal age (y; median [IQR]) ^a	24 (21-29)	25 (21.3-30.3)	23.5 (22-25.8)	24 (22-29)	30.5 (28-31)	26 (20.5-29)	34 (29.5-37)	24.5 (21-29.8)	0.5
Body mass index (kg/m ² , median [IQR]) ^a	31.8 (29.5-34.8)	30.2 (25.3-36.8)	29 (26.6-33.2)	31.3 (26.6-37.3)	34.2 (31.8-37.1)	30.2 (21.7-41.1) ^c	28.3 (25.2-34.7)	24.3 (21.6-38.2)	0.7
Primiparity ^b	13.3% (2/15)	28.6% (4/14)	40% (4/10)	23.1% (3/13)	0% (0/4)	12.5% (1/8)	0% (0/4)	14.3% (2/14)	0.6
Race ^b									0.6
African-American	73.3% (11/15)	78.6% (11/14)	90% (9/10)	92.3% (12/13)	75% (3/4)	62.5% (5/8)	75% (3/4)	78.6% (11/14)	
Caucasian	13.3% (2/15)	21.4% (3/14)	0% (0/10)	7.7% (1/13)	25% (1/4)	25% (2/8)	25% (1/4)	14.3% (2/14)	
Asian	0% (0/15)	0% (0/14)	10% (1/10)	0% (0/13)	0% (0/4)	0% (0/8)	0% (0/4)	0% (0/14)	
Other	13.3% (2/15)	0% (0/14)	0% (0/10)	0% (0/13)	0% (0/4)	12.5% (1/8)	0% (0/4)	7.1% (1/14)	
Cesarean section	100% (15/15)	14.3% (2/14)	20% (2/10)	7.7% (1/13)	100% (4/4)	37.5% (3/8)	25% (1/4)	21.4% (3/14)	<0.001
Gestational age at delivery (wk; median [IQR]) ^a	39.1 (39-39.4)	39 (38.2-40.2)	39.4 (38.4-39.8)	39.6 (38.9-40.1)	34.7 (33.1-36.1)	34.4 (31-35.5)	34 (32.8-34.7)	34.9 (33.3-36.3)	<0.001
Birthweight (g) ^a	3225 (2930-3482.5)	3515 (3121.3-3645)	3392.5 (3348.8-3628.8)	3460 (3155-3665)	2025.5 (1392-2798.8)	1932.5 (1401.5-3233.8)	2130 (1487.5-2776.3)	2240 (1887.5-2322.5)	<0.001

ACA, acute histologic chorioamnionitis; CCA, chronic histologic chorioamnionitis (please see Methods for definitions).

Data are given as median (interquartile range, IQR) and percentage (n/N).

^aKruskal-Wallis test.

^bFisher's exact test.

^cOne missing data.

TABLE 2 Clinical and demographic characteristics of the patient population used to perform immunophenotyping of the decidua parietalis

	Term without labor (n = 16)	Term labor (n = 14)	Term labor with ACA (n = 10)	Term labor with CCA (n = 14)	Preterm without labor (n = 4)	Preterm labor (n = 9)	Preterm labor with ACA (n = 4)	Preterm labor with CCA (n = 14)	P-value
Maternal age (y; median [IQR]) ^a	24 (21-28.8)	25 (21.3-30.3)	23.5 (22-25.8)	24 (22-29)	30.5 (28-31)	28 (21-32)	34 (29.5-37)	24.5 (21-29.8)	0.5
Body mass index (kg/m ² ; median [IQR]) ^a	31.5 (29.5-34.4) ^c	30.2 (25.3-36.8)	29 (26.6-33.2)	32.8 (26.7-37.1)	34.2 (31.8-37.1)	32.9 (21.9-40) ^c	28.3 (25.2-34.7)	24.3 (21.6-38.2)	0.7
Primiparity ^b	12.5% (2/16)	28.6% (4/14)	40% (4/10)	21.4% (3/14)	0% (0/4)	11.1% (1/9)	0% (0/4)	14.3% (2/14)	0.6
Race ^b									0.5
African-American	75% (12/16)	78.6% (11/14)	90% (9/10)	92.9% (13/14)	75% (3/4)	55.6% (5/9)	75% (3/4)	78.6% (11/14)	
Caucasian	18.8% (3/16)	21.4% (3/14)	0% (0/10)	7.1% (1/14)	25% (1/4)	33.3% (3/9)	25% (1/4)	14.3% (2/14)	
Asian	0% (0/16)	0% (0/14)	10% (1/10)	0% (0/14)	0% (0/4)	0% (0/9)	0% (0/4)	0% (0/14)	
Other	6.2% (1/16)	0% (0/14)	0% (0/10)	0% (0/14)	0% (0/4)	11.1% (1/9)	0% (0/4)	7.1% (1/14)	
Cesarean section	100% (16/16)	14.3% (2/14)	20% (2/10)	7.1% (1/14)	100% (4/4)	33.3% (3/9)	25% (1/4)	21.4% (3/14)	<0.001
Gestational age at delivery (wk; median [IQR]) ^a	39.1 (39-39.2)	39 (38.2-40.2)	39.4 (38.4-39.8)	39.7 (38.9-40.1)	34.7 (33.1-36.1)	34.7 (31.3-35.9)	34 (32.8-34.7)	34.9 (33.3-36.3)	<0.001
Birthweight (g) ^a	3222.5 (2940-3456.3)	3515 (3121.3-3645)	3392.5 (3348.8-3628.8)	3510 (3206.3-3706.3)	2025.5 (1392-2798.8)	2160 (1435-3155)	2130 (1487.5-2776.3)	2240 (1887.5-2322.5)	<0.001

ACA, acute histologic chorioamnionitis; CCA, chronic histologic chorioamnionitis (please see Methods for definitions).

Data are given as median (interquartile range, IQR) and percentage (n/N).

^aKruskal-Wallis test.

^bFisher's exact test.

^cOne missing data.

in a few cases. Therefore, Table 1 describes patients from which the decidua basalis was available, and Table 2 describes patients from which the decidua parietalis was used for experiments.

2.2 | Placental histopathological examination

Placentas were examined histologically by a perinatal pathologist blinded to clinical diagnoses and obstetrical outcomes according to standardized Perinatology Research Branch protocols. Briefly, three to nine sections of the placenta were examined, and at least one full-thickness section was taken from the center of the placenta; other sections were taken randomly from the placental disc. Acute and chronic inflammatory lesions of the placenta (maternal inflammatory response and fetal inflammatory response) were diagnosed according to established criteria, including staging and grading.^{94,119-122} Maternal acute placental inflammation was defined by the infiltration of neutrophils into the chorion and amnion, termed acute histologic chorioamnionitis (ACA).^{119,121} Maternal chronic histologic chorioamnionitis (CCA) was defined as lymphocytic infiltration into the chorionic trophoblast layer or chorioamniotic connective tissue.^{90,94}

2.3 | Decidual leukocyte isolation

Decidual leukocytes were isolated from the decidual tissue of patients from each study group as previously described.¹²³ Briefly, the decidua basalis was collected from the basal plate of the placenta, and the decidua parietalis was separated from the chorioamniotic membranes (Figure 1A). The decidual tissues were homogenized in StemPro Accutase Cell Dissociation Reagent (Life Technologies, Grand Island, NY, USA) using a gentleMACS Dissociator (Miltenyi Biotec, San Diego, CA, USA). Homogenized tissues were incubated in Accutase for 45 minutes at 37°C with gentle agitation. After incubation, tissues were washed in 1× phosphate-buffered saline (PBS; Life Technologies) and filtered through a 100- μ m cell strainer (Fisher Scientific, Durham, NC, USA). The resulting cell suspensions were centrifuged at 300 \times g for 10 minutes at 4°C. The decidual mononuclear cells were then separated using a density gradient (Ficoll-Paque Plus; GE Healthcare Biosciences, Piscataway, NJ, USA) in accordance with the manufacturer's instructions. The cells collected from the mononuclear layer of the density gradient were washed with 1× PBS and immediately used for immunophenotyping.

2.4 | Immunophenotyping of decidual B cells

Mononuclear cell suspensions from decidual tissues were stained with the LIVE/DEAD Fixable Yellow Dead Cell Stain kit (ThermoFisher Scientific/Molecular Probes, Eugene, OR, USA) prior to immunophenotyping. Mononuclear cell suspensions were then washed with stain buffer (CAT#554656; BD Biosciences, San Jose, CA, USA) and incubated with 20 μ L of human FcR Blocking Reagent (CAT#130-059-901; Miltenyi Biotec) in 80 μ L of stain buffer for 10 minutes at 4°C. The cells were incubated with extracellular

fluorochrome-conjugated anti-human monoclonal antibodies for 30 minutes at 4°C in the dark (Table S1). Stained cells were washed and resuspended in 0.5 mL of FACS staining buffer and acquired using an LSRII flow cytometer and FACSDiva 6.0 software (BD Biosciences). The absolute number of cells was determined using CountBright absolute counting beads (Life Technologies, Molecular Probes). The analysis and figures were acquired using FlowJo software version 10 (FlowJo, LLC, Ashland, OR, USA). Lymphocytes were gated using forward scatter (FSC) vs side scatter (SSC). B cells were gated as CD19⁺CD3⁻ cells within the lymphocytic and viability gates (Figure 1B). The cell surface markers (Table S1) used to identify the different B-cell subsets were determined by an extensive literature search (Table 3). Cytokine expression by decidual B cells was also performed using specific monoclonal antibodies directly after isolation from the tissue without stimulation (Table S1).

2.5 | Statistics

Statistical analyses were conducted using SPSS software version 19.0 (IBM Corporation, Armonk, NY, USA). The Mann-Whitney *U* test was used for comparisons between the two study groups. Two-tailed (*P*-values without an asterisk) or one-tailed (*P*-values with an asterisk) *P*-values were reported. The Friedman test was used for comparisons between decidual tissues and blood samples collected from the same patients. For patient demographics, the Kruskal-Wallis test was performed for continuous variables and Fisher's exact test for nominal variables. A *P*-value <0.05 was considered statistically significant.

3 | RESULTS

3.1 | In the absence of acute or chronic chorioamnionitis, total B cells are more abundant in the decidua parietalis of women who delivered preterm than in those who delivered at term, regardless of the process of labor

Figure 1A shows the spatial localization of the decidua basalis and decidua parietalis. The gating strategy used to identify total B cells is shown in Figure 1B. First, we compared the proportion of total B cells in the decidual tissues to those in the maternal blood and cord blood. The frequency of B cells in the decidua basalis and decidua parietalis was lower than that observed in maternal blood and cord blood (Figure 1C). Most of the B cells present in the decidua basalis and decidua parietalis co-expressed CD20, as did the B cells in maternal blood and cord blood (Figure 1D). Yet, a CD19⁺CD20⁻ subset present in decidual tissues was rarely found in maternal blood and cord blood (Figure 1D). The number of B cells in the decidua basalis and decidua parietalis ranged from 2 \times 10² to 2 \times 10⁵ cells (Figure S1), considerably lower than previously reported.¹¹⁸ Our finding is consistent with previous studies indicating that the B-cell population is a small fraction among decidual leukocytes.^{85,123} Preterm placentas are significantly smaller

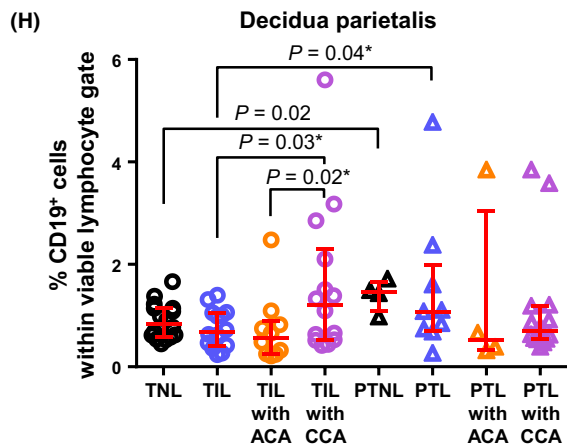
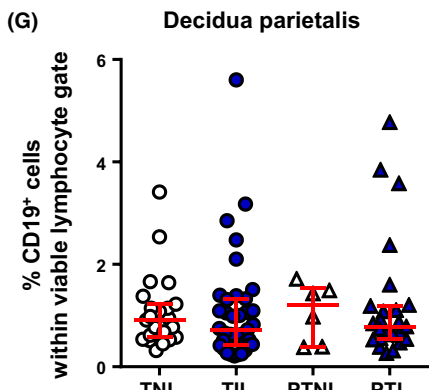
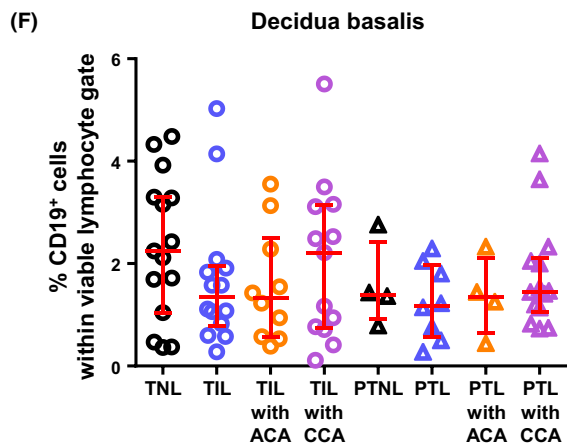
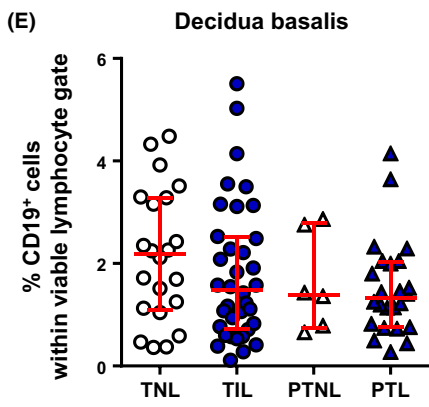
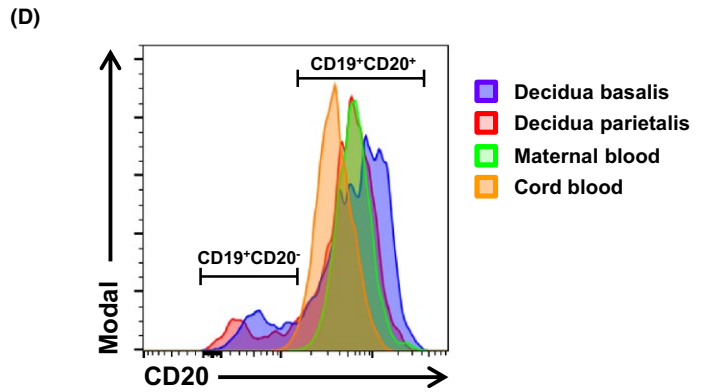
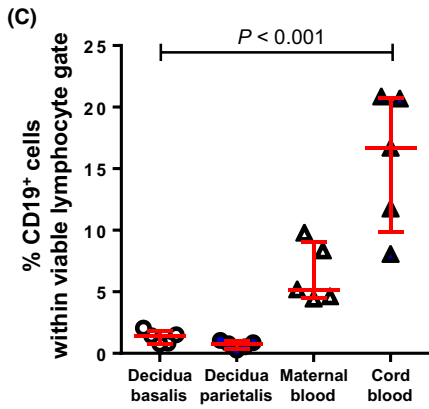
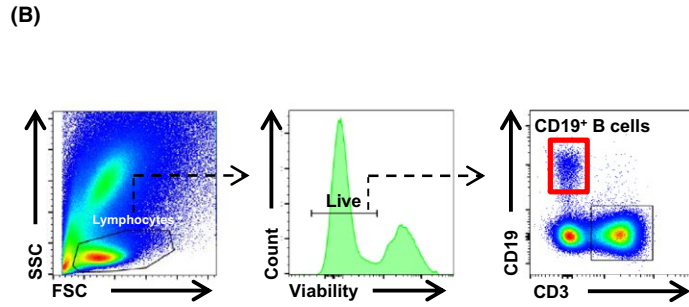
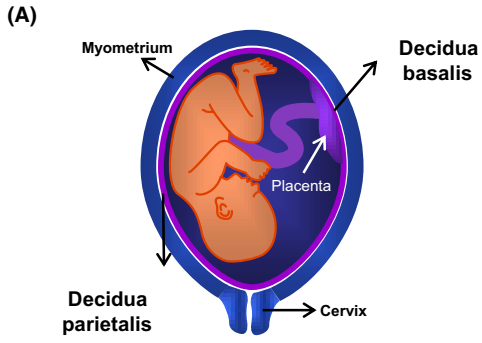


FIGURE 1 Immunophenotyping of B cells in the decidua basalis and decidua parietalis. (A) Representation of the spatial localization of the decidua basalis and decidua parietalis. (B) Flow cytometry gating strategy used to identify B cells in the decidual tissues. Lymphocytes were gated using forward scatter (FSC) vs side scatter (SSC). B cells were gated as CD19⁺CD3⁻ cells within the viability and lymphocytic gates. (C) The proportion of CD19⁺ B cells in samples of case-matched decidua basalis, decidua parietalis, maternal blood, and cord blood (n = 5). (D) Co-expression of CD20 by CD19⁺ B cells in the decidua basalis, decidua parietalis, maternal blood, and cord blood. The proportions of CD19⁺ B cells in the decidua basalis (E) or decidua parietalis (G) from women who delivered at term with labor (TIL) or without labor (TNL) and women who delivered preterm with labor (PTL) or without labor (PTNL). N = 6-37 per group. The TIL and PTL patients were subdivided into those with acute histologic chorioamnionitis (ACA) or chronic histologic chorioamnionitis (CCA), and those without these lesions. Non-labor controls without ACA or CCA were included as well. The proportions of CD19⁺ B cells in the decidua basalis (F) or decidua parietalis (H) in these patient subgroups. N = 4-16 per group. Red midlines and whiskers indicate medians and interquartile ranges, respectively

than term placentas, and the amount of decidual tissue available varies among patients; therefore, flow cytometry quantification may not allow calculation of the absolute number of decidual B cells. For this reason, we used frequencies, also referred to as proportions, throughout the study.

In the decidua basalis, the total number of B cells did not vary among the term and preterm groups (TNL vs TIL vs PTNL vs PTL, Figure 1E). Further, no differences were observed among those groups when samples were allocated into subgroups comparing acute and chronic inflammatory lesions of the placenta (Figure 1F). In the decidua parietalis, the total number of B cells did not vary among term and preterm groups when placental inflammation was not considered (TNL vs TIL vs PTNL vs PTL, Figure 1G). In the absence of acute or chronic chorioamnionitis, the decidua parietalis of women who delivered preterm had higher proportions of B cells than those who delivered at term, regardless of the presence of labor (PTNL or PTL vs TNL or TIL, Figure 1H). These data indicate that B cells are more abundant in preterm gestation than at term, consistent with findings previously reported.¹⁰⁰ Yet, contrary to what has been reported,^{77,118} the processes of preterm and term labor did not alter the frequency of total B cells. In the decidua parietalis, B cells were more abundant in women with chronic chorioamnionitis who underwent labor at term compared to

those without this placental lesion (TIL with CCA vs TIL or TIL with ACA, Figure 1H). However, no differences were observed in B-cell frequencies between the PTL and PTL with CCA groups.

3.2 | Identification of different B-cell subsets in the decidual tissues

Next, we performed an extensive literature review of the markers used to identify the main B-cell subsets (Table 3). Two main B-cell subsets have been described: B1 and B2 B cells (Figure 2A).¹²⁴ Both B1 and B2 B cells can become transitional B cells, naïve B cells, class-switched memory B cells, non-class-switched memory B cells, and plasmablasts (Figure 2B).¹²⁴ CD19⁺ B cells were subdivided into the above-mentioned B-cell subsets. The gating strategy used to identify these B-cell subsets is shown in Figure 2C. We found that B2 B cells were more abundant in the decidual tissues than B1 B cells, which made up a distinct but very small population (data not shown). Therefore, the B1 B cells were considered by themselves. A t-SNE plot showing the different B-cell subsets identified in the decidual tissues is shown in Figure 2D. Transitional and naïve B cells were the most abundant subsets in the decidual tissues (Figure 2D).

TABLE 3 Markers to identify B-cell subsets

B cell subsets	Immunophenotype	References
B1 B cells	CD19 ⁺ CD27 ⁺ CD43 ⁺	Griffin et al, ^{133,154} Torring et al, ¹⁵⁵ Inui et al ¹⁵⁶
B2 B cells	CD19 ⁺ CD23 ⁺ CD27 ⁻ CD43 ⁻	Griffin et al, ¹³³ Deng et al ¹⁵⁷
Transitional B cells	CD19 ⁺ CD38 ^{hi} CD24 ^{hi}	Marie-Cardine et al, ¹⁵⁸ Ha et al, ¹⁵⁹ Seifert et al, ¹⁶⁰ de Masson et al, ¹⁶¹ Cherukuri et al, ¹⁶² Heidt et al, ¹⁶³ Latorre et al, ¹⁶⁴ Tebbe et al, ¹⁶⁵ Luk et al, ¹⁶⁶ Demoersman et al, ¹⁶⁷ Li et al ¹⁶⁸
Naïve B cells	CD19 ⁺ CD27 ⁺ IgD ⁺	Guerreiro-Cacais et al, ¹⁶⁹ So et al, ¹⁷⁰ Heath et al, ¹⁷¹ Cantaert et al, ¹⁷² Toapanta et al, ¹⁷³ Jansen et al, ¹⁷⁴ Castaneda et al, ¹⁷⁵ Wu et al, ¹⁷⁶ Nakayama et al ¹⁷⁷
Class-switched memory B cells	CD19 ⁺ CD27 ⁺ IgD ⁻	Anolik et al, ¹⁷⁸ Tian et al, ¹⁷⁹ Ghannam et al, ¹⁸⁰ Palanichamy et al, ¹²⁶ Berkowska et al, ¹⁸¹ Morbach et al, ¹⁸² Wu et al, ¹⁸³ So et al, ¹⁷⁰ Heath et al, ¹⁷¹ Topanta et al, ¹⁷³ Labuda et al, ¹⁸⁴ Degauque et al, ¹⁸⁵ Zhang et al, ¹⁸⁶ Bagnara et al, ¹⁸⁷ Czarnowicki et al, ¹⁸⁸ Hayashi et al, ¹⁸⁹ Mensah et al, ¹⁹⁰ Woda et al, ¹⁹¹ Castaneda et al, ¹⁷⁵ Martins et al ¹⁹²
Non-class-switched memory B cells	CD19 ⁺ CD27 ⁺ IgD ⁺	Anolik et al, ¹⁷⁸ Tian et al, ¹⁷⁹ Palanichamy et al, ¹²⁶ Colonna-Romano et al, ¹⁹³ Jacobi et al, ¹⁹⁴ Wu et al, ¹⁸³ So et al, ¹⁷⁰ Heath et al, ¹⁷¹ Topanta et al, ¹⁷³ Weller et al, ¹⁹⁵ Labuda et al, ¹⁸⁴ Clemente et al, ¹⁹⁶ Czarnowicki et al, ¹⁸⁸ Mensah et al, ¹⁹⁰ Castaneda et al, ¹⁷⁵ Martins et al, ¹⁹² Corneth et al, ¹⁹⁷ Torigoe et al, ¹⁹⁸ Hu et al ¹⁹⁹
Plasmablasts	CD19 ⁺ CD20 ⁻ CD38 ⁺ CD24 ⁻	Morbach et al, ²⁰⁰ Lin et al, ²⁰¹ Benett et al ²⁰²

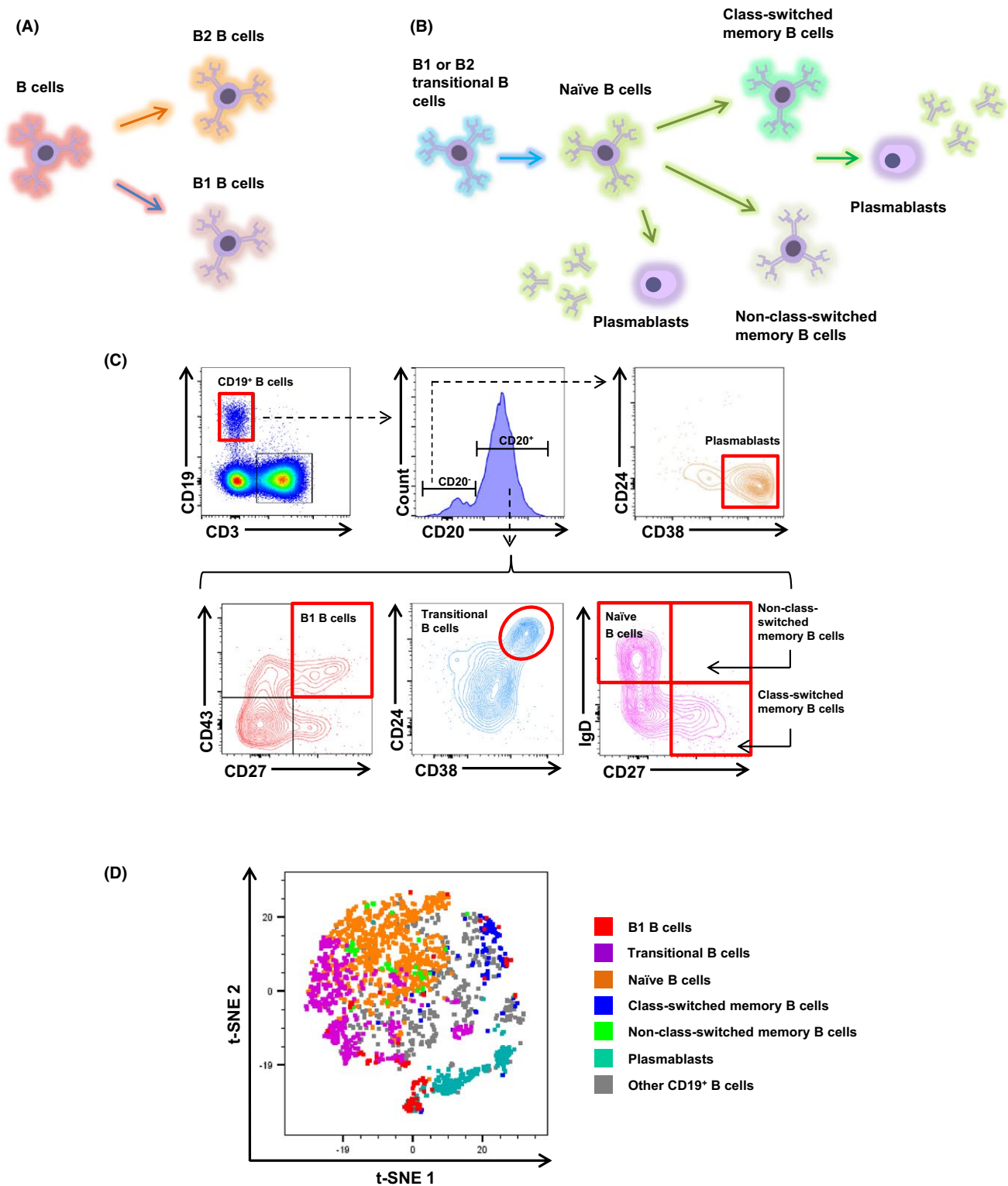


FIGURE 2 B-cell subsets in the decidua basalis and decidua parietalis. (A) Schematic representation of B1 and B2 B cells. (B) Schematic representation of the B-cell subsets identified in the decidual tissues. (C) Flow cytometry gating strategy used to identify the following B-cell subsets: B1 B cells (CD3⁻CD19⁺CD20⁺CD27⁺CD43⁺ cells); transitional B cells (CD3⁻CD19⁺CD20⁺CD38^{hi}CD24^{hi} cells); naïve B cells (CD3⁻CD19⁺CD20⁺CD27⁺IgD⁺ cells); class-switched memory B cells (CD3⁻CD19⁺CD20⁺CD27⁺IgD⁻ cells); non-class-switched memory B cells (CD3⁻CD19⁺CD20⁺CD27⁺IgD⁺ cells); and plasmablasts (CD3⁻CD19⁺CD20⁺CD38⁺CD24⁻ cells). (D) A representative t-distributed stochastic neighbor embedding (t-SNE) dot plot visualizing B-cell subsets in the decidual tissues. Red = B1 B cells, purple = transitional B cells, orange = naïve B cells, blue = class-switched memory B cells, green = non-class-switched memory B cells, turquoise = plasmablasts, and gray = other CD19⁺ B cells

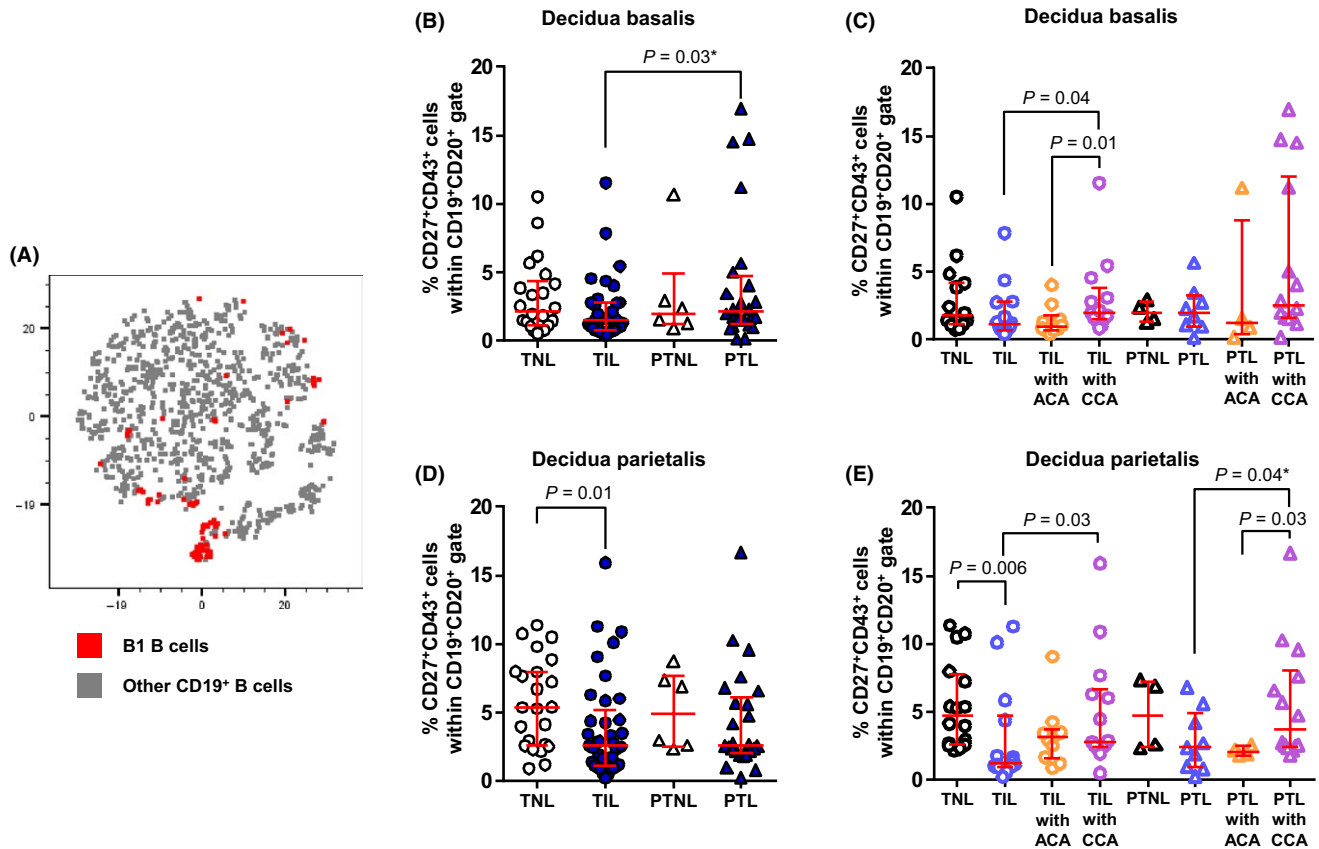


FIGURE 3 B1 B cells in the decidua basalis and decidua parietalis. (A) A representative t-distributed stochastic neighbor embedding (t-SNE) dot plot visualizing B1 B cells in the decidual tissues. Red = B1 B cells and gray = other CD19⁺ B cells. The proportions of B1 B cells in the decidua basalis (B) or decidua parietalis (D) from women who delivered at term with labor (TIL) or without labor (TNL) and women who delivered preterm with labor (PTL) or without labor (PTNL). N = 6–37 per group. The TIL and PTL patients were subdivided into those with acute histologic chorioamnionitis (ACA) or chronic histologic chorioamnionitis (CCA) and those without these lesions. Non-labor controls without ACA or CCA were included as well. The proportions of B1 B cells in the decidua basalis (C) or decidua parietalis (E) in these patient subgroups. N = 4–16 per group. Red midlines and whiskers indicate medians and interquartile ranges, respectively

3.3 | B1 B cells are increased in the decidual tissues of women with chronic chorioamnionitis who underwent labor at term or preterm labor

B1 B cells were rarely found in the decidual tissues, as shown in the t-SNE plot (Figure 3A). In the decidua basalis, the frequency of B1 B cells did not change between the labor and no labor groups (TNL vs TIL and PTNL vs PTL, Figure 3B). A higher proportion of B1 B cells was observed in women who underwent preterm labor compared to those who underwent labor at term (PTL vs TIL, Figure 3B). This difference was most likely driven by the presence of chronic chorioamnionitis in the preterm labor group (PTL with CCA, Figure 3C). The presence of chronic chorioamnionitis also increased the proportion of B1 B cells in labor at term (TIL with CCA vs TIL or TIL with ACA, Figure 3C). In the decidua parietalis, B1 B cells were less abundant in women who underwent labor at term compared to those who delivered at term without labor (TIL vs TNL, Figure 3D). However, women who underwent labor at term with chronic chorioamnionitis had higher proportions of

B1 B cells than those without this placental lesion (TIL with CCA vs TIL, Figure 3E). Women who underwent preterm labor with chronic chorioamnionitis also had higher proportions of B1 B cells compared to those without this placental lesion (PTL with CCA vs PTL or PTL with ACA, Figure 3B). These results show that B1 B cells are increased in the decidual tissues of women who underwent labor at term or preterm labor in the presence of chronic chorioamnionitis, but not in those with acute chorioamnionitis or without placental lesions.

3.4 | Transitional B cells were reduced in the decidual tissues of women with preterm labor compared to gestational age-matched controls

Transitional B cells are the critical link between bone marrow immature B cells and mature B cells present in the peripheral repertoire.^{125,126} The transitional B-cell subset is thought to represent a key negative selection checkpoint for autoreactive B cells.^{127,128} Transitional B cells were one of the most abundant

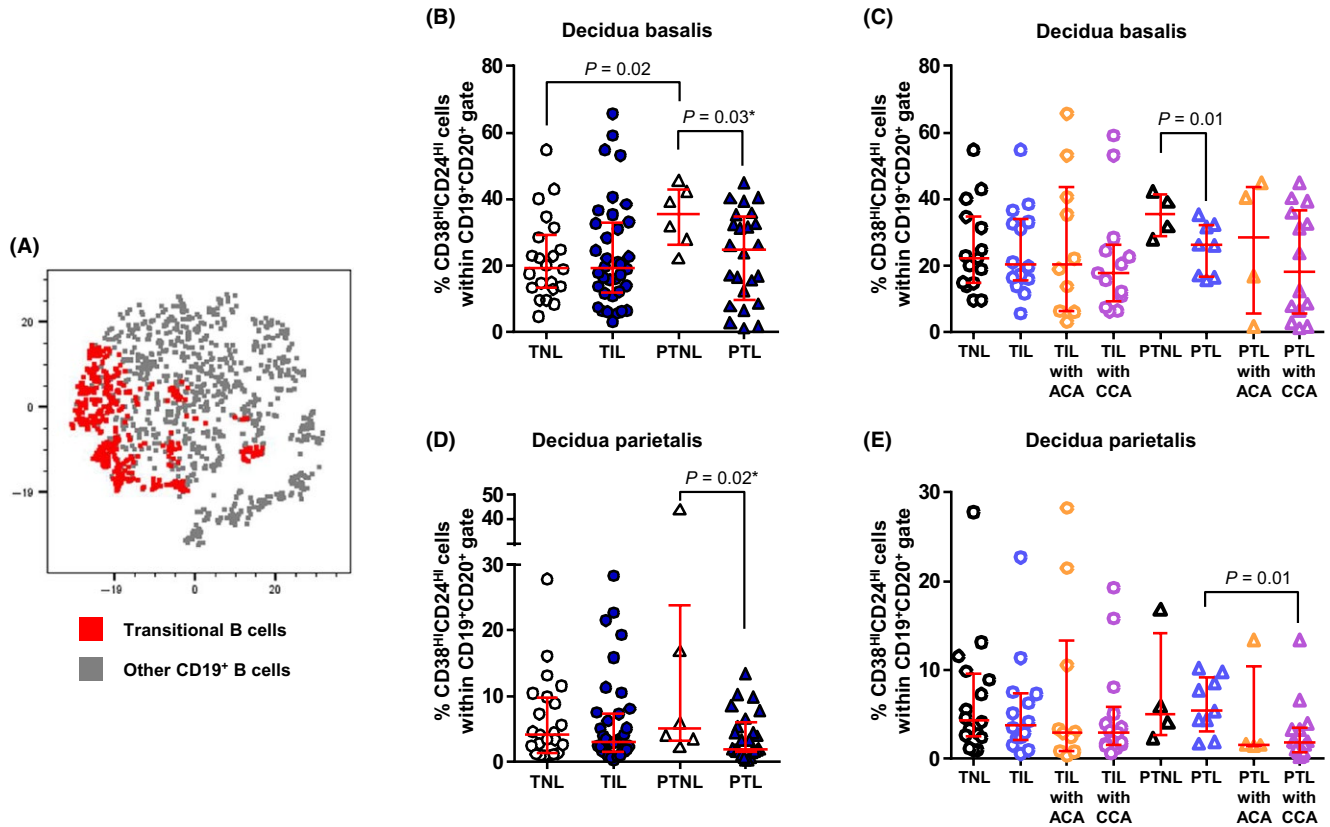


FIGURE 4 Transitional B cells in the decidua basalis and decidua parietalis. (A) A representative t-distributed stochastic neighbor embedding (t-SNE) dot plot visualizing transitional B cells in the decidual tissues. Red = transitional B cells and gray = other CD19⁺ B cells. The proportions of transitional B cells in the decidua basalis (B) or decidua parietalis (D) from women who delivered at term with labor (TIL) or without labor (TNL) and women who delivered preterm with labor (PTL) or without labor (PTNL). N = 6-37 per group. The TIL and PTL patients were subdivided into those with acute histologic chorioamnionitis (ACA) or chronic histologic chorioamnionitis (CCA) and those without these lesions. Non-labor controls without ACA or CCA were included as well. The proportions of transitional B cells in the decidua basalis (C) or decidua parietalis (E) in these patient subgroups. N = 4-16 per group. Red midlines and whiskers indicate medians and interquartile ranges, respectively

B-cell subsets present in the decidual tissues, as shown in the t-SNE plot (Figure 4A). In the decidua basalis, the proportion of transitional B cells was lower in women who underwent preterm labor compared to those who delivered preterm in the absence of labor (PTL vs PTNL, Figure 4B). Additionally, transitional B cells were less abundant in women who underwent preterm labor with or without placental lesions compared to those who delivered preterm without labor (PTL with CCA, PTL with ACA, and PTL vs PTNL, Figure 4C). However, transitional B cells were more abundant in women who delivered preterm without labor than in those who delivered at term in the absence of labor (PTNL vs TNL, Figure 4B). In the decidua parietalis, transitional B cells were less abundant in women who underwent preterm labor than in those who delivered preterm without labor (PTL vs PTNL, Figure 4D). Transitional B cells were even fewer in women who underwent preterm labor with chronic chorioamnionitis than in those without this placental lesion (PTL with CCA vs PTL, Figure 4E). Taken together, these data show that transitional B cells are reduced in women with preterm labor compared to gestational age-matched controls.

3.5 | Naïve B cells undergo mild alterations in the decidual tissues

Naïve B cells were another abundant B-cell subset found in the decidual tissues, as shown in the t-SNE plot (Figure 5A). In the decidua basalis, naïve B cells did not vary among the study groups (TNL vs TIL vs PTNL vs PTL, Figure 5B). In the absence of placental lesions, naïve B cells were modestly higher in women who delivered preterm without labor than in those who delivered at term without labor (PTNL vs TNL, Figure 5C). In the decidua parietalis, naïve B cells were reduced in women who underwent preterm labor compared to those who delivered preterm without labor (PTL vs PTNL, Figure 5D). This reduction was driven by the presence of chronic chorioamnionitis given that women who underwent preterm labor with this placental lesion tended to have fewer naïve B cells in the decidua parietalis (Figure 5E). Women with preterm labor and chronic chorioamnionitis also had fewer naïve B cells than those with labor at term (PTL with CCA vs TIL with CCA, Figure 5E). In summary, naïve B cells undergo mild alterations in the decidua basalis of women with preterm labor and chronic chorioamnionitis.

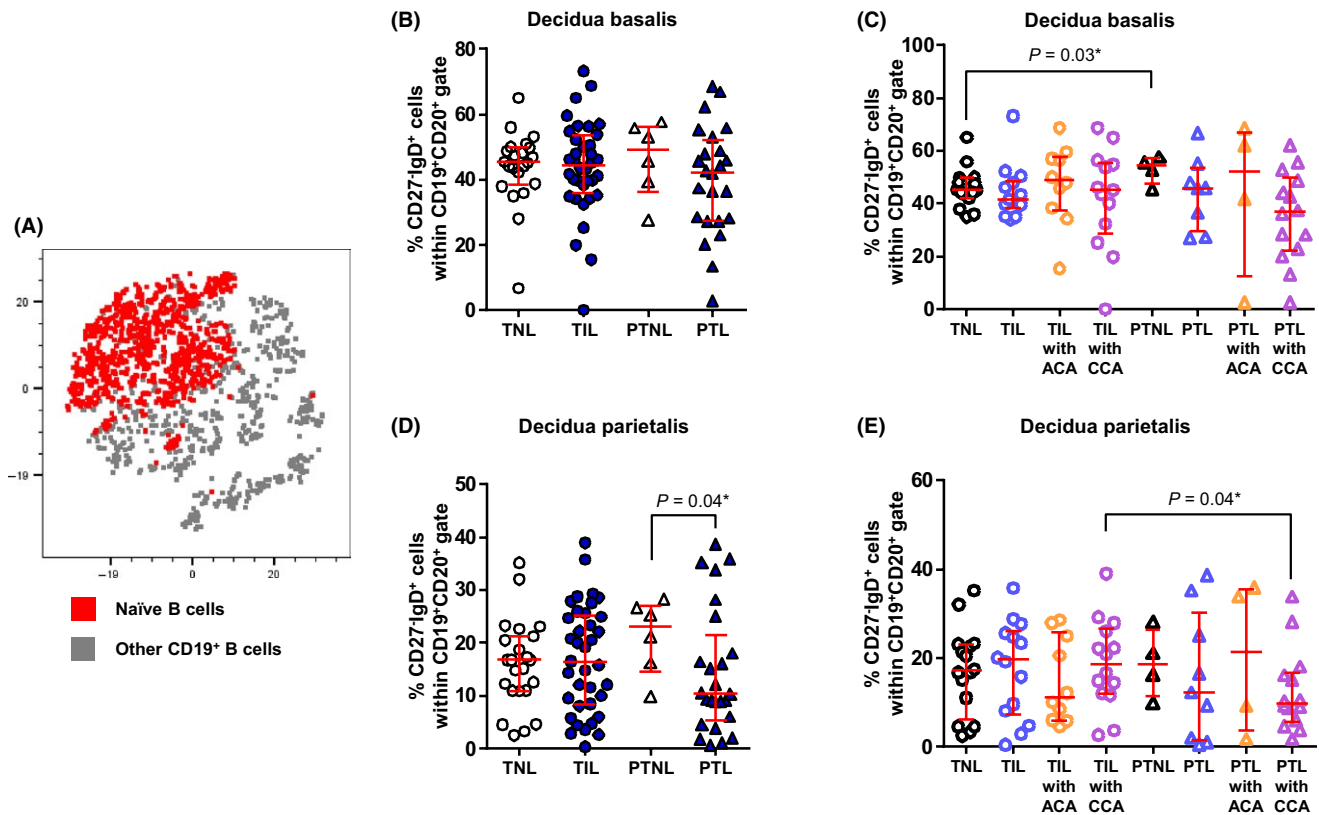


FIGURE 5 Naïve B cells in the decidua basalis and decidua parietalis. (A) A representative t-distributed stochastic neighbor embedding (t-SNE) dot plot visualizing naïve B cells in the decidual tissues. Red = naïve B cells and gray = other CD19⁺ B cells. The proportions of naïve B cells in the decidua basalis (B) or decidua parietalis (D) from women who delivered at term with labor (TIL) or without labor (TNL) and women who delivered preterm with labor (PTL) or without labor (PTNL). N = 6-37 per group. The TIL and PTL patients were subdivided into those with acute histologic chorioamnionitis (ACA) or chronic histologic chorioamnionitis (CCA), and those without these lesions. Non-labor controls without ACA or CCA were included as well. The proportions of naïve B cells in the decidua basalis (C) or decidua parietalis (E) in these patient subgroups. N = 4-16 per group. Red midlines and whiskers indicate medians and interquartile ranges, respectively

3.6 | Class-switched and non-class-switched memory B cells are rare and undergo mild alterations in the decidual tissues

Naïve B cells can undergo class-switch recombination generating class-switched or non-class-switched memory B cells.¹²⁹ Next, we examined whether these B-cell subsets were present in the decidual tissues. Class-switched and non-class-switched memory B cells were rarely present in the decidual tissues (Figures 6A and 7A). In the decidua basalis, class-switched memory B cells were more abundant in women who underwent preterm labor than in those with labor at term (PTL vs TIL, Figure 6B). This increase was most likely due to the presence of chronic chorioamnionitis since women who underwent preterm labor with this placental lesion tended to have higher proportions of class-switched memory B cells than those without the lesion (PTL with CCA vs PTNL, PTL, or PTL with ACA, Figure 6C). In the absence of placental lesions, class-switched memory B cells were less abundant in women who underwent labor at term (TIL vs TNL, Figure 6C). However, class-switched memory B cells were more abundant in women who underwent labor at term with chronic chorioamnionitis than in those with acute chorioamnionitis (TIL with

CCA vs TIL with ACA, Figure 6C). In the decidua parietalis, class-switched memory B cells were less abundant in women with labor at term than in those who delivered at term without labor (TIL vs TNL, Figure 6D), which was consistently observed in the absence of placental lesions (Figure 6E). No differences were observed between women who delivered preterm with and without labor (PTNL vs PTL, Figure 6D).

Non-class-switched memory B cells were even less abundant than class-switched memory B cells in the decidual tissues (Figure 7A). In the decidua basalis, non-class-switched memory B cells did not vary among the study groups (TNL vs TIL vs PTNL vs PTL, Figure 7B). When the patients were divided into subgroups according to the presence of placental lesions, a slight increase in the proportion of non-class-switched memory B cells was observed in women who underwent labor at term with chronic chorioamnionitis compared to those with acute chorioamnionitis (TIL with CCA vs TIL with ACA, Figure 7C). In the decidua parietalis, non-class-switched memory B cells were less abundant in women who underwent preterm labor than those who delivered preterm without labor (PTL vs PTNL, Figure 7D). This was most likely driven by the presence of chronic chorioamnionitis since women with this placental

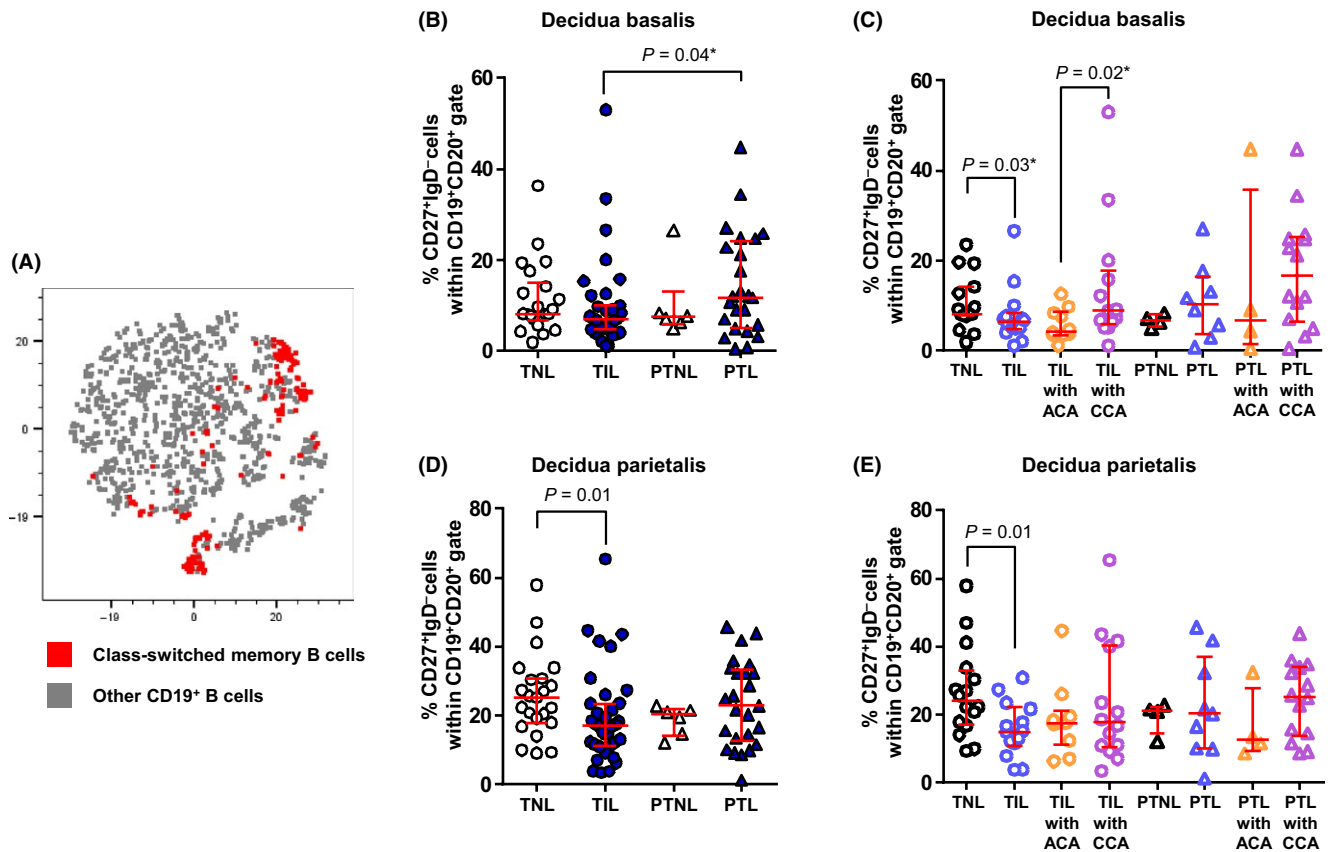


FIGURE 6 Class-switched memory B cells in the decidua basalis and decidua parietalis. (A) A representative t-distributed stochastic neighbor embedding (t-SNE) dot plot visualizing class-switched memory B cells in the decidual tissues. Red = class-switched memory B cells and gray = other CD19⁺ B cells. The proportions of class-switched memory B cells in the decidua basalis (B) or decidua parietalis (D) from women who delivered at term with labor (TIL) or without labor (TNL) and women who delivered preterm with labor (PTL) or without labor (PTNL). N = 6–37 per group. The TIL and PTL patients were subdivided into those with acute histologic chorioamnionitis (ACA) or chronic histologic chorioamnionitis (CCA) and those without these lesions. Non-labor controls without ACA or CCA were included as well. The proportions of class-switched memory B cells in the decidua basalis (C) or decidua parietalis (E) in these patient subgroups. N = 4–16 per group. Red midlines and whiskers indicate medians and interquartile ranges, respectively

lesion had lower proportions of this B-cell subset than those without the lesion (PTL with CCA vs PTL and PTNL, Figure 7E). In the absence of placental lesions, a small reduction in the proportion of non-class-switched memory B cells was also observed in women with labor at term compared to those without labor (TIL vs TNL, Figure 7E). However, women who underwent labor at term with chronic chorioamnionitis had greater proportions of non-class-switched memory B cells than those without this placental lesion (TIL with CCA vs TIL, Figure 7E).

Therefore, class-switched and non-class-switched memory B cells are rare in the decidual tissues and undergo mild alterations with the presence of labor and/or chronic placental inflammation.

3.7 | Plasmablasts seemed to increase in the decidual tissues of women with chronic chorioamnionitis who underwent labor at term or preterm labor

Naïve B cells and memory B cells can differentiate into plasmablasts.^{129,130} We then investigated the presence of plasmablasts in the

decidual tissues. Plasmablasts were a relatively abundant population in the decidual tissues (Figure 8A). In the decidua basalis and decidua parietalis, plasmablasts did not vary among the study groups (TNL vs TIL vs PTNL vs PTL, Figure 8B,D). When the samples were divided into subgroups according to the presence of placental lesions, we consistently found that women who underwent labor at term with chronic chorioamnionitis had higher proportions of plasmablasts than those without this placental lesion in both the decidua basalis and decidua parietalis (TIL with CCA vs TIL or TIL with ACA, Figure 8C,E). Plasmablasts also seemed to be more abundant in women who underwent preterm labor with chronic chorioamnionitis than in those without this placental lesion (Figure 8C,E). These data show that plasmablasts are abundant in the decidual tissues of women who underwent labor at term or preterm labor with chronic chorioamnionitis.

3.8 | B cells in the decidual tissues expressed high levels of IL-12, IL-6, and/or IL-35

Recent studies indicated that, besides production of antibodies, B cells participate in immune responses by producing inflammatory

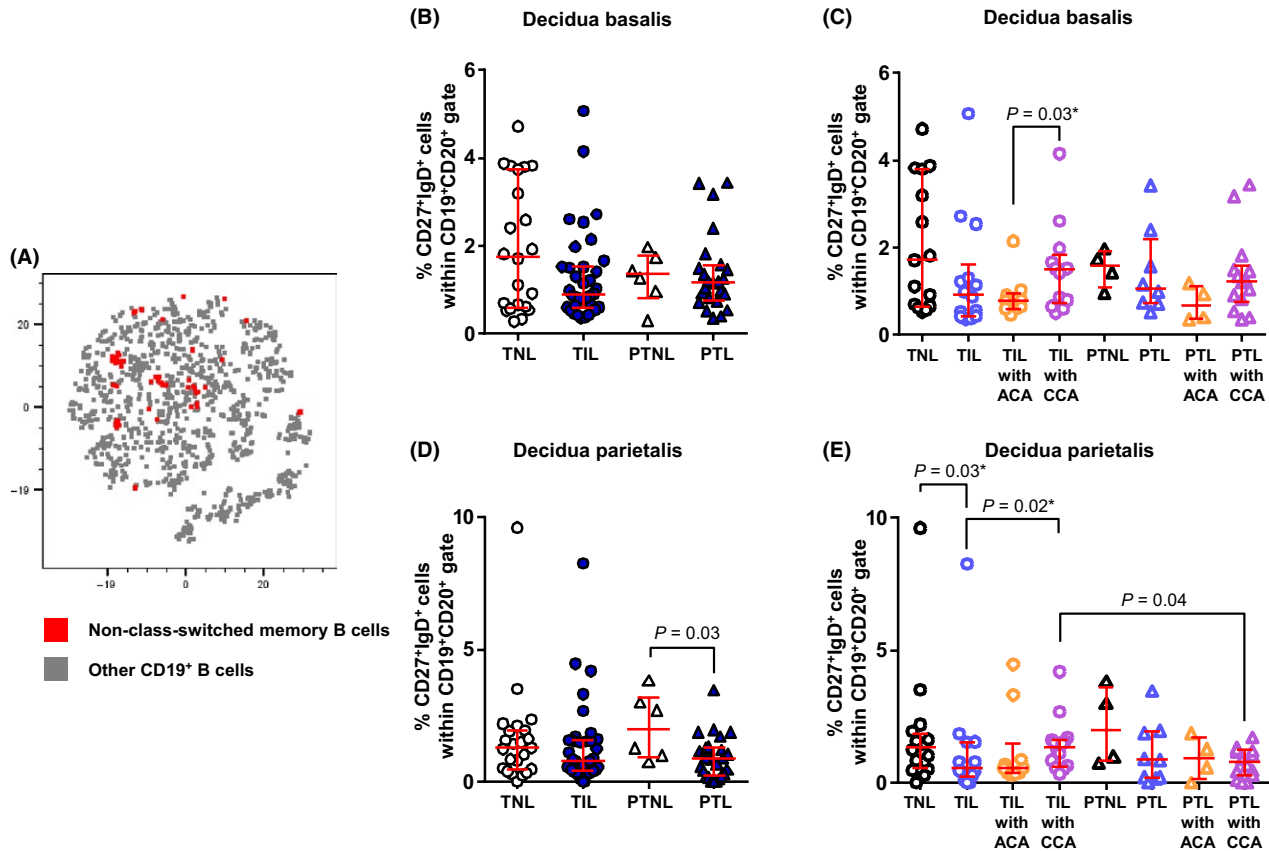


FIGURE 7 Non-class-switched memory B cells in the decidua basalis and decidua parietalis. (A) A representative t-distributed stochastic neighbor embedding (t-SNE) dot plot visualizing non-class-switched memory B cells in the decidual tissues. Red = non-class-switched memory B cells and gray = other CD19⁺ B cells. The proportions of non-class-switched memory B cells in the decidua basalis (B) or decidua parietalis (D) from women who delivered at term with labor (TIL) or without labor (TNL) and women who delivered preterm with labor (PTL) or without labor (PTNL). N = 6-37 per group. The TIL and PTL patients were subdivided into those with acute histologic chorioamnionitis (ACA) or chronic histologic chorioamnionitis (CCA), and those without these lesions. Non-labor controls without ACA or CCA were included as well. The proportions of non-class-switched memory B cells in the decidua basalis (C) or decidua parietalis (E) in these patient subgroups. N = 4-16 per group. Red midlines and whiskers indicate medians and interquartile ranges, respectively

cytokines.^{131,132} We investigated whether decidual B cells produce pro- and anti-inflammatory cytokines associated with the process of labor. In the decidua basalis and decidua parietalis, a small proportion of B cells expressed cytokines (Figure 9A,C). In the decidua basalis, B cells expressed higher levels of interleukin (IL)-12 and IL-35 than IFN- γ , IL-2, IL-4, IL-6, IL-10, and TNF- α (Figure 9B). In the decidua parietalis, B cells expressed higher levels of IL-12 and IL-6 than other cytokines (Figure 9D). These results show that B cells participate in the inflammatory milieu at the maternal-fetal interface.

4 | DISCUSSION

4.1 | Principal findings

The principal findings of this study are as follows: (a) In the absence of acute or chronic chorioamnionitis, total B cells were

more abundant in the decidua parietalis of women who delivered preterm than in those who delivered at term, regardless of the presence of labor; (b) decidual transitional and naïve B cells were the most abundant B-cell subsets; (c) decidual B1 B cells were increased in women with either labor at term or preterm labor with chronic chorioamnionitis compared to those without this placental lesion; (d) decidual transitional B cells were reduced in women with preterm labor compared to those without labor; (e) decidual naïve B cells, class-switched and non-class-switched memory B cells were rare and underwent mild alterations with the process of preterm labor; (f) decidual plasmablasts seemed to increase in women with labor at term or preterm with chronic chorioamnionitis; and (g) decidual B cells expressed high levels of IL-12, IL-6, and/or IL-35. These findings indicate that specific B-cell populations at the maternal-fetal interface undergo alterations in a subset of women with either labor at term or preterm labor and chronic chorioamnionitis.

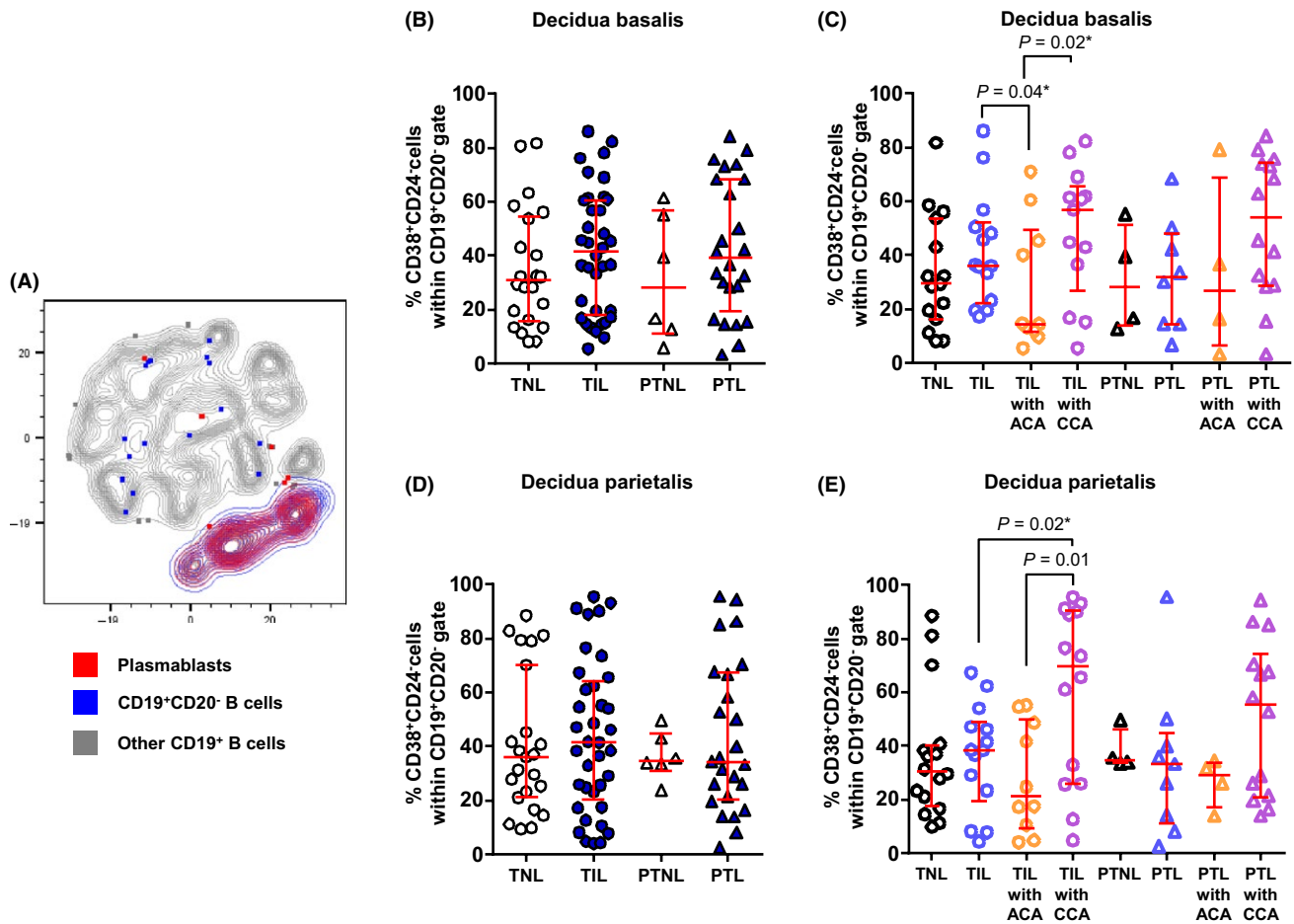


FIGURE 8 Plasmablasts in the decidua basalis and decidua parietalis. (A) A representative t-distributed stochastic neighbor embedding (t-SNE) contour plot visualizing plasmablasts in the decidua tissues. Red = plasmablasts, blue = CD19⁺CD20⁻ B cells and gray = other CD19⁺ B cells. The proportions of plasmablasts in the decidua basalis (B) or decidua parietalis (D) from women who delivered at term with labor (TIL) or without labor (TNL) and women who delivered preterm with labor (PTL) or without labor (PTNL). N = 6-37 per group. The TIL and PTL patients were subdivided into those with acute histologic chorioamnionitis (ACA) or chronic histologic chorioamnionitis (CCA) and those without these lesions. Non-labor controls without ACA or CCA were included as well. The proportions of plasmablasts in the decidua basalis (C) or decidua parietalis (E) in these patient subgroups. N = 4-16 per group. Red midlines and whiskers indicate medians and interquartile ranges, respectively

4.2 | In the absence of acute or chronic chorioamnionitis, total B cells were more abundant in the decidua parietalis of women who delivered preterm than in those who delivered at term, regardless of the presence of labor

Herein, we found that total B cells were not increased in the decidua basalis and decidua parietalis of women who underwent labor at term compared to those who delivered at term without labor. This finding is consistent, in part, with what has previously been published. We and other investigators have reported that there are no differences in the proportion of B cells in the decidua parietalis of women who delivered at term with and without labor.^{77,85} However, previous studies have shown that the decidua basalis of women who underwent spontaneous labor at term had greater proportions of total B cells than those who delivered at term without labor.⁷⁷ The discrepancy between the above-mentioned study

and our findings could be explained by the fact that we considered only viable B cells. These findings show that the frequency of total viable B cells is not altered with the physiological process of labor at term.

We also found that total B cells were not increased in the decidua basalis and decidua parietalis of women who underwent preterm labor compared to those who delivered preterm in the absence of labor. To our knowledge, it is the first time that this comparison between preterm labor cases and gestational age-matched controls has been made. A previous study reported that the abundance of B cells in the decidua parietalis was significantly increased in women who underwent spontaneous preterm labor compared to those who underwent spontaneous labor at term.¹¹⁸ However, this comparison warrants caution given that gestational age influences the proportion of B cells found in the decidua tissues.¹⁰⁰ Without considering acute and chronic chorioamnionitis, no differences in the frequency of total B cells in the decidua parietalis were

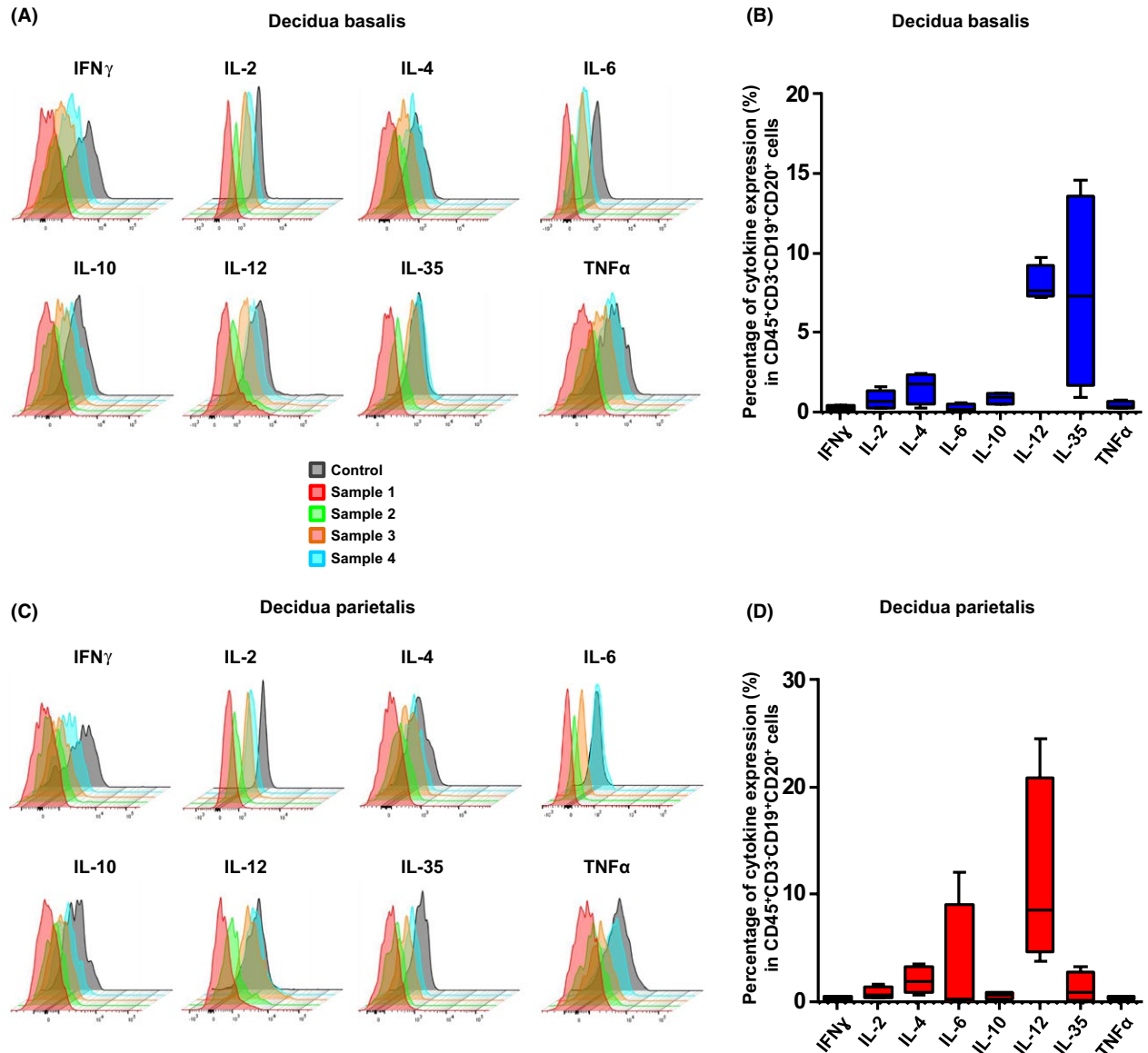


FIGURE 9 Cytokine expression by decidual B cells. (A and C) Staggered offset overlay histograms of cytokines expressed by B cells ($CD45^+CD3^+CD19^+CD20^+$ cells) in the decidua basalis and parietalis. Four representative samples of decidual B cells isolated from women who delivered preterm or term. Control histograms represent signals derived from isotypes or autofluorescence controls. (B and D) Proportions of B cells expressing $IFN-\gamma$, IL-2, IL-4, IL-6, IL-10, IL-12, IL-35, and $TNF-\alpha$ in the decidua basalis and parietalis

observed between women who underwent preterm labor and those with term labor. Women with preterm labor, but without acute or chronic chorioamnionitis, had higher frequencies of decidual B cells compared to those with labor at term. Nonetheless, this increase in the proportion of total B cells was also observed by comparing women who delivered preterm in the absence of labor to those who delivered at term without labor. Therefore, these data indicate that the process of preterm labor does not increase the proportion of total B cells in the decidua parietalis; rather, it is an effect of gestational age.

After the two study groups were subdivided based on the presence of acute or chronic chorioamnionitis, we found that the frequency of total B cells in the decidua basalis did not significantly

vary. Yet, differences in B-cell proportions in the decidua parietalis were observed among the study groups. This result is explained by the fact that acute and chronic chorioamnionitis are diagnosed in the chorioamniotic membranes, located next to the decidua parietalis.^{94,121} Of interest, the presence of chronic chorioamnionitis increased the frequency of total B cells in the decidua parietalis of women with labor at term but not in those with preterm labor (Figure 1H). These findings suggest that the process of chronic chorioamnionitis in labor at term is distinct from that observed in women with preterm labor.

Different B-cell subsets were present in the decidual tissues; yet, we focused our discussion on the main differences observed in women with labor at term and those with preterm labor.

4.3 | Decidual B1 B cells are increased in women with chronic chorioamnionitis who underwent labor at term or preterm labor

B1 B cells show a skewed antigen receptor repertoire toward self-antigens, as well as tonic B-cell receptor intracellular signaling, spontaneous secretion of IgM, and efficient T-cell stimulation.¹³³ Herein, we found that B1 B cells are increased in the decidua basalis and decidua parietalis of women with either labor at term or preterm labor with chronic chorioamnionitis. These data suggest, for the first time, a role for decidual B1 B cells in the pathological process of chronic chorioamnionitis associated with either labor at term or preterm labor. Potentially, B1 B cells could be participating in the stimulation of CD8⁺ cytotoxic T cells, which can induce apoptosis of trophoblasts leading to maternal anti-fetal rejection.⁹⁴ More recently, we found that both decidual CD4⁺ and CD8⁺ T cells from women who underwent spontaneous preterm labor displayed an effector memory phenotype and expressed high levels of granzyme B and perforin,⁹⁷ molecules capable of cytotoxicity.¹³⁴⁻¹⁴⁰ B1 B cells constitutively secrete IL-10,¹⁴¹ suggesting that these cells are implicated in the regulation of such a chronic inflammatory process associated with labor at term and preterm labor. Given that B1 B cells are either pro-inflammatory (through cytotoxic CD8⁺ T-cell stimulation) or anti-inflammatory (through IL-10 secretion), their role may vary in chronic chorioamnionitis and requires further research.

4.4 | Decidual naïve B cells undergo mild alterations with the process of preterm labor and/or placental inflammation

During a primary response, transitional B cells differentiate to naïve B cells that upon a secondary response can generate memory B cells.¹⁴² Naïve B cells and memory B cells display differential expression of IgD or CD27 and in vitro function following BCR stimulation.¹⁴³⁻¹⁴⁵ Overall, naïve B cells present antigen-inexperienced responses compared to memory B cells.¹⁴⁵ Naïve B cells can also proliferate into short-lived plasmablasts or plasma cells that produce low-affinity antibodies.¹⁴⁶ In the current study, we found that naïve B cells were reduced in patients with preterm labor and chronic chorioamnionitis, but no differences were observed in memory B cells. Yet, decidual tissues from women who underwent preterm labor with chronic chorioamnionitis tended to have greater proportions of plasmablasts. These data suggest that, in women with preterm labor and chronic chorioamnionitis, naïve B cells might proliferate to plasmablasts in the decidual tissues. However, additional investigation of decidual B cells is required to strengthen this proposed concept.

4.5 | Decidual plasmablasts increase in women who underwent either labor at term or preterm labor with chronic chorioamnionitis

Plasmablasts are newly differentiated B cells that can leave the lymphoid organs and home in either tissue or bone marrow.^{147,148}

Additionally, they are capable of differentiating into fully mature plasma cells.¹⁴⁹ Plasmablasts are usually short-lived and can be generated inside and outside of the germinal centers.¹⁵⁰ In general, plasmablasts represent an accessible source of mature antibodies characterized by the regulation of several transcription factors, such as BLIMP1 (B-lymphocyte-induced maturation protein 1) and IRF4 (interferon-regulatory factor 4).¹⁵¹ Our results showed that plasmablasts seemed to increase in women who underwent either labor at term or preterm labor with chronic chorioamnionitis. These data suggest that, in addition to T cells, the hallmark of chronic chorioamnionitis,⁹⁴ B-cell antibody-mediated responses are implicated in the chronic inflammatory process associated with preterm labor and birth.

4.6 | B cells can express cytokines in the decidual tissues

Cytokine production by B cells is implicated in multiple aspects of immunity.¹³² Thus, B cells can express pro- and anti-inflammatory cytokines to mediate immune responses.^{131,132} Herein, we found that, in both the decidua basalis and decidua parietalis, B cells expressed high levels of IL-12, a cytokine that increased in the amniotic fluid of women with preterm labor and preterm birth.⁴⁶ In the decidua parietalis, B cells also expressed high levels of IL-6, a cytokine released by gestational tissues and highly relevant in the pathological process of preterm labor.^{26,152} Therefore, these data provide evidence that, by releasing cytokines, B cells at the maternal-fetal interface contribute to the pro-inflammatory microenvironment associated with labor. B cells, however, could also be participating in the regulation of such a hostile microenvironment, given that these cells also expressed a high level of IL-35, an immunosuppressive cytokine previously reported to be expressed by the placental tissues.¹⁵³ Further studies are needed to investigate whether decidual B cells display different cytokine profiles than those derived from gestational age-matched controls.

5 | CONCLUSION

The current study provides the characterization of B-cell subsets at the human maternal-fetal interface during labor at term and preterm labor. In the absence of acute or chronic chorioamnionitis, total B cells are more abundant in the decidua parietalis of women who delivered preterm than in those who delivered at term, regardless of the process of labor. Yet, an increase in the proportions of B1 B cells and plasmablasts was observed in women who underwent labor at term or preterm labor with chronic chorioamnionitis compared to those without this placental lesion. Decidual B cells are capable of producing pro- and anti-inflammatory cytokines. In conclusion, the B-cell compartment at the maternal-fetal interface undergoes alterations in women with either labor at term or preterm labor and chronic chorioamnionitis, suggesting that these adaptive immune cells are implicated in the process of labor associated with chronic inflammation of

the placenta. Additional experimentation is required to investigate the functionality of chronic chorioamnionitis-derived B cells.

ACKNOWLEDGMENTS

This research was supported, in part, by the Perinatology Research Branch (PRB), Division of Intramural Research, Eunice Kennedy Shriver National Institute of Child Health and Human Development, National Institutes of Health, U.S. Department of Health and Human Services (NICHD/NIH/DHHS), and, in part, with federal funds from the NICHD/NIH/DHHS under Contract No. HHSN275201300006C. This research was also supported by the Wayne State University Perinatal Initiative in Maternal, Perinatal and Child Health. We thank the physicians and nurses from the Center for Advanced Obstetrical Care and Research and the Intrapartum Unit, as well as the research assistants from the PRB Clinical Laboratory, for their help in collecting samples. We also thank staff members of the PRB Histology/Pathology Unit for the processing and examination of the pathological sections.

CONFLICT OF INTEREST

The authors declare no potential conflict of interests.

ORCID

Roberto Romero  <https://orcid.org/0000-0002-4448-5121>

Nardhy Gomez-Lopez  <https://orcid.org/0000-0002-3406-5262>

REFERENCES

1. Goldenberg RL, Culhane JF, Iams JD, Romero R. Epidemiology and causes of preterm birth. *Lancet*. 2008;371:75-84.
2. Muglia LJ, Katz M. The enigma of spontaneous preterm birth. *N Engl J Med*. 2010;362:529-535.
3. Romero R, Mazor M, Munoz H, Gomez R, Galasso M, Sherer DM. The preterm labor syndrome. *Ann N Y Acad Sci*. 1994;734:414-429.
4. Romero R, Dey SK, Fisher SJ. Preterm labor: one syndrome, many causes. *Science*. 2014;345:760-765.
5. Romero R, Mazor M, Wu YK, et al. Infection in the pathogenesis of preterm labor. *Semin Perinatol*. 1988;12:262-279.
6. Gravett MG, Witkin SS, Haluska GJ, Edwards JL, Cook MJ, Novy MJ. An experimental model for intraamniotic infection and preterm labor in rhesus monkeys. *Am J Obstet Gynecol*. 1994;171:1660-1667.
7. Gomez R, Romero R, Edwin SS, David C. Pathogenesis of preterm labor and preterm premature rupture of membranes associated with intraamniotic infection. *Infect Dis Clin North Am*. 1997;11:135-176.
8. Romero R, Gotsch F, Pineles B, Kusanovic JP. Inflammation in pregnancy: its roles in reproductive physiology, obstetrical complications, and fetal injury. *Nutr Rev*. 2007;65:S194-202.
9. Vornhagen J, Quach P, Boldenow E, et al. Bacterial hyaluronidase promotes ascending GBS infection and preterm birth. *MBio*; 2016;7:e00781-16.
10. Boldenow E, Gendrin C, Ngo L, et al. Group B *Streptococcus circumventis* neutrophils and neutrophil extracellular traps during amniotic cavity invasion and preterm labor. *Sci Immunol*. 2016;1:eaah4576.
11. Strauss JF 3rd, Romero R, Gomez-Lopez N, et al. Spontaneous preterm birth: advances toward the discovery of genetic predisposition. *Am J Obstet Gynecol*. 2018;218:294-314.
12. Garcia-Flores V, Romero R, Miller D, et al. Inflammation-induced adverse pregnancy and neonatal outcomes can be improved by the immunomodulatory peptide exendin-4. *Front Immunol*. 2018;9:1291.
13. Presicce P, Park CW, Senthamaikannan P, et al. IL-1 signaling mediates intrauterine inflammation and chorio-decidua neutrophil recruitment and activation. *JCI Insight*. 2018;3:e98306.
14. Keelan JA. Intrauterine inflammatory activation, functional progesterone withdrawal, and the timing of term and preterm birth. *J Reprod Immunol*. 2018;125:89-99.
15. Bobitt JR, Ledger WJ. Unrecognized amnionitis and prematurity: a preliminary report. *J Reprod Med*. 1977;19:8-12.
16. Bobitt JR, Ledger WJ. Amniotic fluid analysis. Its role in maternal neonatal infection. *Obstet Gynecol*. 1978;51:56-62.
17. Miller JM Jr, Pupkin MJ, Hill GB. Bacterial colonization of amniotic fluid from intact fetal membranes. *Am J Obstet Gynecol*. 1980;136:796-804.
18. Wallace RL, Herrick CN. Amniocentesis in the evaluation of premature labor. *Obstet Gynecol*. 1981;57:483-486.
19. Bobitt JR, Hayslip CC, Damato JD. Amniotic fluid infection as determined by transabdominal amniocentesis in patients with intact membranes in premature labor. *Am J Obstet Gynecol*. 1981;140:947-952.
20. Wahbeh CJ, Hill GB, Eden RD, Gall SA. Intra-amniotic bacterial colonization in premature labor. *Am J Obstet Gynecol*. 1984;148:739-743.
21. Romero R, Mazor M. Infection and preterm labor. *Clin Obstet Gynecol*. 1988;31:553-584.
22. Romero R, Sirtori M, Oyarzun E, et al. and clinical significance of intraamniotic infection in women with preterm labor and intact membranes. *Am J Obstet Gynecol*. 1989;161:817-824.
23. Romero R, Avila C, Brekus CA, Morotti R. The role of systemic and intrauterine infection in preterm parturition. *Ann N Y Acad Sci*. 1991;622:355-375.
24. Watts DH, Krohn MA, Hillier SL, Eschenbach DA. The association of occult amniotic fluid infection with gestational age and neonatal outcome among women in preterm labor. *Obstet Gynecol*. 1992;79:351-357.
25. Yoon BH, Romero R, Moon JB, et al. The frequency and clinical significance of intra-amniotic inflammation in patients with a positive cervical fetal fibronectin. *Am J Obstet Gynecol*. 2001;185:1137-1142.
26. Yoon BH, Romero R, Moon JB, et al. Clinical significance of intra-amniotic inflammation in patients with preterm labor and intact membranes. *Am J Obstet Gynecol*. 2001;185:1130-1136.
27. Romero R, Espinoza J, Chaiworapongsa T, Kalache K. Infection and prematurity and the role of preventive strategies. *Semin Neonatol*. 2002;7:259-274.
28. Shim SS, Romero R, Hong JS, et al. Clinical significance of intra-amniotic inflammation in patients with preterm premature rupture of membranes. *Am J Obstet Gynecol*. 2004;191:1339-1345.
29. Lee SE, Romero R, Park CW, Jun JK, Yoon BH. The frequency and significance of intraamniotic inflammation in patients with cervical insufficiency. *Am J Obstet Gynecol*. 2008;198(633):e631-638.
30. Lee SE, Romero R, Lee SM, Yoon BH. Amniotic fluid volume in intra-amniotic inflammation with and without culture-proven amniotic fluid infection in preterm premature rupture of membranes. *J Perinat Med*. 2010;38:39-44.
31. Kim SM, Romero R, Lee J, et al. The frequency and clinical significance of intra-amniotic inflammation in women with preterm uterine contractility but without cervical change: do the diagnostic criteria for preterm labor need to be changed? *J Matern Fetal Neonatal Med*. 2012;25:1212-1221.

32. Romero R, Miranda J, Chaiworapongsa T, et al. A novel molecular microbiologic technique for the rapid diagnosis of microbial invasion of the amniotic cavity and intra-amniotic infection in preterm labor with intact membranes. *Am J Reprod Immunol.* 2014;71:330-358.
33. Pacora P, Romero R, Erez O, et al. The diagnostic performance of the beta-glucan assay in the detection of intra-amniotic infection with *Candida* species. *J Matern Fetal Neonatal Med.* 2017;32:1703-1720.
34. Romero R, Miranda J, Chaiworapongsa T, et al. Sterile intra-amniotic inflammation in asymptomatic patients with a sonographic short cervix: prevalence and clinical significance. *J Matern Fetal Neonatal Med.* 2014;28:1343-1359.
35. Romero R, Miranda J, Chaiworapongsa T, et al. Prevalence and clinical significance of sterile intra-amniotic inflammation in patients with preterm labor and intact membranes. *Am J Reprod Immunol.* 2014;72:458-474.
36. Romero R, Miranda J, Chaemsathong P, et al. Sterile and microbial-associated intra-amniotic inflammation in preterm prelabor rupture of membranes. *J Matern Fetal Neonatal Med.* 2015;28:1394-1409.
37. Oh KJ, Kim SM, Hong JS, et al. Twenty-four percent of patients with clinical chorioamnionitis in preterm gestations have no evidence of either culture-proven intraamniotic infection or intraamniotic inflammation. *Am J Obstet Gynecol.* 2017;216:604.e11.
38. Gomez-Lopez N, Romero R, Panaitescu B, et al. Inflammasome activation during spontaneous preterm labor with intra-amniotic infection or sterile intra-amniotic inflammation. *Am J Reprod Immunol.* 2018;80:e13049.
39. Romero R, Mazor M, Tartakovsky B. Systemic administration of interleukin-1 induces preterm parturition in mice. *Am J Obstet Gynecol.* 1991;165:969-971.
40. Romero R, Tartakovsky B. The natural interleukin-1 receptor antagonist prevents interleukin-1-induced preterm delivery in mice. *Am J Obstet Gynecol.* 1992;167:1041-1045.
41. Friel LA, Romero R, Edwin S, et al. The calcium binding protein, S100B, is increased in the amniotic fluid of women with intra-amniotic infection/inflammation and preterm labor with intact or ruptured membranes. *J Perinat Med.* 2007;35:385-393.
42. Romero R, Espinoza J, Hassan S, et al. Soluble receptor for advanced glycation end products (sRAGE) and endogenous secretory RAGE (esRAGE) in amniotic fluid: modulation by infection and inflammation. *J Perinat Med.* 2008;36:388-398.
43. Chaiworapongsa T, Erez O, Kusanovic JP, et al. Amniotic fluid heat shock protein 70 concentration in histologic chorioamnionitis, term and preterm parturition. *J Matern Fetal Neonatal Med.* 2008;21:449-461.
44. Romero R, Chaiworapongsa T, Alpay Savasan Z, et al. Damage-associated molecular patterns (DAMPs) in preterm labor with intact membranes and preterm PROM: a study of the alarmin HMGB1. *J Matern Fetal Neonatal Med.* 2011;24:1444-1455.
45. Romero R, Chaiworapongsa T, Savasan ZA, et al. Clinical chorioamnionitis is characterized by changes in the expression of the alarmin HMGB1 and one of its receptors, sRAGE. *J Matern Fetal Neonatal Med.* 2012;25:558-567.
46. Romero R, Grivel JC, Tarca AL, et al. Evidence of perturbations of the cytokine network in preterm labor. *Am J Obstet Gynecol.* 2015;213:836.e1-836.e18.
47. Gomez-Lopez N, Romero R, Plazyo O, et al. Intra-amniotic administration of HMGB1 induces spontaneous preterm labor and birth. *Am J Reprod Immunol.* 2016;75:3-7.
48. Plazyo O, Romero R, Unkel R, et al. HMGB1 induces an inflammatory response in the chorioamniotic membranes that is partially mediated by the inflammasome. *Biol Reprod.* 2016;95:130.
49. Gomez-Lopez N, Romero R, Plazyo O, et al. Preterm labor in the absence of acute histologic chorioamnionitis is characterized by cellular senescence of the chorioamniotic membranes. *Am J Obstet Gynecol.* 2017;217:592.e1-592.e17.
50. Kim YM, Romero R, Chaiworapongsa T, et al. Toll-like receptor-2 and -4 in the chorioamniotic membranes in spontaneous labor at term and in preterm parturition that are associated with chorioamnionitis. *Am J Obstet Gynecol.* 2004;191:1346-1355.
51. Mittal P, Romero R, Kusanovic JP, et al. CXCL6 (granulocyte chemotactic protein-2): a novel chemokine involved in the innate immune response of the amniotic cavity. *Am J Reprod Immunol.* 2008;60:246-257.
52. Gotsch F, Romero R, Chaiworapongsa T, et al. Evidence of the involvement of caspase-1 under physiologic and pathologic cellular stress during human pregnancy: a link between the inflammasome and parturition. *J Matern Fetal Neonatal Med.* 2008;21:605-616.
53. Cardenas I, Means RE, Aldo P, et al. Viral infection of the placenta leads to fetal inflammation and sensitization to bacterial products predisposing to preterm labor. *J Immunol.* 2010;185:1248-1257.
54. Iliovski V, Hirsch E. Synergy between viral and bacterial toll-like receptors leads to amplification of inflammatory responses and preterm labor in the mouse. *Biol Reprod.* 2010;83:767-773.
55. Abrahams VM. The role of the Nod-like receptor family in trophoblast innate immune responses. *J Reprod Immunol.* 2011;88:112-117.
56. Lappas M. NOD1 and NOD2 regulate proinflammatory and pro-labor mediators in human fetal membranes and myometrium via nuclear factor-kappa B. *Biol Reprod.* 2013;89:14.
57. Jaiswal MK, Agrawal V, Mallers T, Gilman-Sachs A, Hirsch E, Beaman KD. Regulation of apoptosis and innate immune stimuli in inflammation-induced preterm labor. *J Immunol.* 2013;191:5702-5713.
58. Koga K, Izumi G, Mor G, Fujii T, Osuga Y. Toll-like receptors at the maternal-fetal interface in normal pregnancy and pregnancy complications. *Am J Reprod Immunol.* 2014;72:192-205.
59. Agrawal V, Jaiswal MK, Iliovski V, Beaman KD, Jilling T, Hirsch E. Platelet-activating factor: a role in preterm delivery and an essential interaction with Toll-like receptor signaling in mice. *Biol Reprod.* 2014;91:119.
60. St Louis D, Romero R, Plazyo O, et al. Invariant NKT cell activation induces late preterm birth that is attenuated by rosiglitazone. *J Immunol.* 2016;196:1044-1059.
61. Xu Y, Romero R, Miller D, et al. An M1-like macrophage polarization in decidual tissue during spontaneous preterm labor that is attenuated by rosiglitazone treatment. *J Immunol.* 2016;196:2476-2491.
62. Arenas-Hernandez M, Romero R, St Louis D, Hassan SS, Kaye EB, Gomez-Lopez N. An imbalance between innate and adaptive immune cells at the maternal-fetal interface occurs prior to endotoxin-induced preterm birth. *Cell Mol Immunol.* 2016;13:462-473.
63. Gomez-Lopez N, Romero R, Leng Y, et al. Neutrophil extracellular traps in acute chorioamnionitis: a mechanism of host defense. *Am J Reprod Immunol.* 2017;77:e12617.
64. Negishi Y, Shima Y, Takeshita T, Takahashi H. Distribution of invariant natural killer T cells and dendritic cells in late pre-term birth without acute chorioamnionitis. *Am J Reprod Immunol.* 2017;77:e12658.
65. Gomez-Lopez N, Romero R, Xu Y, et al. Neutrophil extracellular traps in the amniotic cavity of women with intra-amniotic infection: a new mechanism of host defense. *Reprod Sci.* 2017;24:1139-1153.
66. Gomez-Lopez N, Romero R, Xu Y, et al. A role for the inflammasome in spontaneous preterm labor with acute histologic chorioamnionitis. *Reprod Sci.* 2017;24:1382-1401.
67. Gomez-Lopez N, Romero R, Garcia-Flores V, et al. Amniotic fluid neutrophils can phagocytize bacteria: a mechanism for microbial killing in the amniotic cavity. *Am J Reprod Immunol.* 2017;78:e12723.
68. Musilova I, Andrys C, Krejssek J, et al. Amniotic fluid pentraxins: potential early markers for identifying intra-amniotic inflammatory

- complications in preterm pre-labor rupture of membranes. *Am J Reprod Immunol.* 2017;79:e12789.
69. Gomez-Lopez N, Romero R, Xu Y, et al. Are amniotic fluid neutrophils in women with intraamniotic infection and/or inflammation of fetal or maternal origin? *Am J Obstet Gynecol.* 2017;217:693.
 70. Xu Y, Romero R, Miller D, et al. Innate lymphoid cells at the human maternal-fetal interface in spontaneous preterm labor. *Am J Reprod Immunol.* 2018;79:e12820.
 71. Varrey A, Romero R, Panaitescu B, et al. Human beta-defensin-1: a natural antimicrobial peptide present in amniotic fluid that is increased in spontaneous preterm labor with intra-amniotic infection. *Am J Reprod Immunol.* 2018;80:e13031.
 72. Paquette AG, Shynlova O, Kibschull M, Price ND, Lye SJ. Global alliance to prevent P, stillbirth systems biology of preterm birth T: comparative analysis of gene expression in maternal peripheral blood and monocytes during spontaneous preterm labor. *Am J Obstet Gynecol.* 2018;218:345.
 73. Miller D, Motomura K, Garcia-Flores V, Romero R, Gomez-Lopez N. Innate lymphoid cells in the maternal and fetal compartments. *Front Immunol.* 2018;9:2396.
 74. Vargas ML, Santos JL, Ruiz C, et al. Comparison of the proportions of leukocytes in early and term human decidua. *Am J Reprod Immunol.* 1993;29:135-140.
 75. Bonney EA, Pudney J, Anderson DJ, Hill JA. Gamma-delta T cells in midgestation human placental villi. *Gynecol Obstet Invest.* 2000;50:153-157.
 76. Sindram-Trujillo A, Scherjon S, Kanhai H, Roelen D, Claas F. Increased T-cell activation in decidua parietalis compared to decidua basalis in uncomplicated human term pregnancy. *Am J Reprod Immunol.* 2003;49:261-268.
 77. Sindram-Trujillo AP, Scherjon SA, van Hulst-van Miert PP, Kanhai HH, Roelen DL, Claas FH. Comparison of decidual leukocytes following spontaneous vaginal delivery and elective cesarean section in uncomplicated human term pregnancy. *J Reprod Immunol.* 2004;62:125-137.
 78. Tilburgs T, Roelen DL, van der Mast BJ. Differential distribution of CD4(+)CD25(bright) and CD8(+)CD28(-) T-cells in decidua and maternal blood during human pregnancy. *Placenta.* 2006;27(Suppl A):S47-53.
 79. Constantin CM, Masopust D, Gourley T, et al. Normal establishment of virus-specific memory CD8 T cell pool following primary infection during pregnancy. *J Immunol.* 2007;179:4383-4389.
 80. Tilburgs T, Scherjon SA, Roelen DL, Claas FH. Decidual CD8+CD28- T cells express CD103 but not perforin. *Hum Immunol.* 2009;70:96-100.
 81. Tilburgs T, van der Mast BJ, Nagtzaam NM, Roelen DL, Scherjon SA, Claas FH. Expression of NK cell receptors on decidual T cells in human pregnancy. *J Reprod Immunol.* 2009;80:22-32.
 82. Norton MT, Fortner KA, Oppenheimer KH, Bonney EA. Evidence that CD8 T-cell homeostasis and function remain intact during murine pregnancy. *Immunology.* 2010;131:426-437.
 83. Tilburgs T, Schonkeren D, Eikmans M, et al. Human decidual tissue contains differentiated CD8+ effector-memory T cells with unique properties. *J Immunol.* 2010;185:4470-4477.
 84. Gomez-Lopez N, Vadillo-Perez L, Hernandez-Carbajal A, Godines-Enriquez M, Olson DM, Vadillo-Ortega F. Specific inflammatory microenvironments in the zones of the fetal membranes at term delivery. *Am J Obstet Gynecol.* 2011;205:235.e15-24.
 85. Gomez-Lopez N, Vega-Sanchez R, Castillo-Castrejon M, Romero R, Cubeiro-Arreola K, Vadillo-Ortega F. Evidence for a role for the adaptive immune response in human term parturition. *Am J Reprod Immunol.* 2013;69:212-230.
 86. Shepard MT, Bonney EA. PD-1 regulates T cell proliferation in a tissue and subset-specific manner during normal mouse pregnancy. *Immunol Invest.* 2013;42:385-408.
 87. Bonney EA. Alternative theories: pregnancy and immune tolerance. *J Reprod Immunol.* 2017;123:65-71.
 88. Powell RM, Lissauer D, Tamblay J, et al. Decidual T cells exhibit a highly differentiated phenotype and demonstrate potential fetal specificity and a strong transcriptional response to IFN. *J Immunol.* 2017;199:3406-3417.
 89. van der Zwan A, Bi K, Norwitz ER, et al. Mixed signature of activation and dysfunction allows human decidual CD8(+) T cells to provide both tolerance and immunity. *Proc Natl Acad Sci USA.* 2018;115:385-390.
 90. Kim CJ, Romero R, Kusanovic JP, et al. The frequency, clinical significance, and pathological features of chronic chorioamnionitis: a lesion associated with spontaneous preterm birth. *Mod Pathol.* 2010;23:1000-1011.
 91. Lee J, Romero R, Xu Y, et al. A signature of maternal anti-fetal rejection in spontaneous preterm birth: chronic chorioamnionitis, anti-human leukocyte antigen antibodies, and C4d. *PLoS ONE.* 2011;6:e16806.
 92. Xu Y, Tarquini F, Romero R, et al. Peripheral CD300a+CD8+ T lymphocytes with a distinct cytotoxic molecular signature increase in pregnant women with chronic chorioamnionitis. *Am J Reprod Immunol.* 2012;67:184-197.
 93. Lee J, Kim JS, Park JW, et al. Chronic chorioamnionitis is the most common placental lesion in late preterm birth. *Placenta.* 2013;34:681-689.
 94. Kim CJ, Romero R, Chaemsaitong P, Kim JS. Chronic inflammation of the placenta: definition, classification, pathogenesis, and clinical significance. *Am J Obstet Gynecol.* 2015;213:S53-69.
 95. Gomez-Lopez N, Romero R, Arenas-Hernandez M, et al. In vivo T-cell activation by a monoclonal alphaCD3epsilon antibody induces preterm labor and birth. *Am J Reprod Immunol.* 2016;76:386-390.
 96. Frascoli M, Coniglio L, Witt R, et al. Alloreactive fetal T cells promote uterine contractility in preterm labor via IFN-gamma and TNF-alpha. *Sci Transl Med.* 2018;10:eaan2263.
 97. Arenas-Hernandez M, Romero R, Xu Y, et al. Effector and activated T cells induce preterm labor and birth that is prevented by treatment with progesterone. *J Immunol.* 2018. Accepted.
 98. Bulmer JN, Sunderland CA. Immunohistological characterization of lymphoid cell populations in the early human placental bed. *Immunology.* 1984;52:349-357.
 99. Haller H, Radillo O, Rukavina D, et al. An immunohistochemical study of leucocytes in human endometrium, first and third trimester basal decidua. *J Reprod Immunol.* 1993;23:41-49.
 100. Bartmann C, Segerer SE, Rieger L, Kapp M, Sutterlin M, Kammerer U. Quantification of the predominant immune cell populations in decidua throughout human pregnancy. *Am J Reprod Immunol.* 2014;71:109-119.
 101. Redline RW, Lu CY. Localization of fetal major histocompatibility complex antigens and maternal leukocytes in murine placenta. Implications for maternal-fetal immunological relationship. *Lab Invest.* 1989;61:27-36.
 102. Jensen F, Muzzio D, Soldati R, Fest S, Zenclussen AC. Regulatory B10 cells restore pregnancy tolerance in a mouse model. *Biol Reprod.* 2013;89:90.
 103. Muzzio D, Zenclussen AC, Jensen F. The role of B cells in pregnancy: the good and the bad. *Am J Reprod Immunol.* 2013;69:408-412.
 104. Rolle L, Memarzadeh Tehran M, Morell-Garcia A, et al. Cutting edge: IL-10-producing regulatory B cells in early human pregnancy. *Am J Reprod Immunol.* 2013;70:448-453.
 105. Zenclussen AC. Adaptive immune responses during pregnancy. *Am J Reprod Immunol.* 2013;69:291-303.
 106. Fettke F, Schumacher A, Costa SD, Zenclussen AC. B cells: the old new players in reproductive immunology. *Front Immunol.* 2014;5:285.

107. Muzzio D, Zygmunt M, Jensen F. The role of pregnancy-associated hormones in the development and function of regulatory B cells. *Front Endocrinol (Lausanne)*. 2014;5:39.
108. Muzzio DO, Soldati R, Ehrhardt J, et al. B cell development undergoes profound modifications and adaptations during pregnancy in mice. *Biol Reprod*. 2014;91:115.
109. Muzzio DO, Soldati R, Rolle L, Zygmunt M, Zenclussen AC, Jensen F. B-1a B cells regulate T cell differentiation associated with pregnancy disturbances. *Front Immunol*. 2014;5:6.
110. Bommer I, Muzzio DO, Zygmunt M, Jensen F. Progesterone and estradiol exert an inhibitory effect on the production of anti-inflammatory cytokine IL-10 by activated MZ B cells. *J Reprod Immunol*. 2016;116:113-116.
111. Fettke F, Schumacher A, Canellada A, et al. Maternal and fetal mechanisms of B cell regulation during pregnancy: human chorionic gonadotropin stimulates B cells to produce IL-10 while alpha-fetoprotein drives them into apoptosis. *Front Immunol*. 2016;7:495.
112. Muzzio DO, Ziegler KB, Ehrhardt J, Zygmunt M, Jensen F. Marginal zone B cells emerge as a critical component of pregnancy well-being. *Reproduction*. 2016;151:29-37.
113. Wolfson ML, Muzzio DO, Ehrhardt J, Franchi AM, Zygmunt M, Jensen F. Expression analysis of cannabinoid receptors 1 and 2 in B cells during pregnancy and their role on cytokine production. *J Reprod Immunol*. 2016;116:23-27.
114. Schumacher A, Ehrentraut S, Scharm M, et al. Plasma cell alloantigen 1 and IL-10 secretion define two distinct peritoneal B1a B cell subsets with opposite functions, PC1(high) cells being protective and PC1(low) cells harmful for the growing fetus. *Front Immunol*. 2018;9:1045.
115. Ziegler KB, Muzzio DO, Matzner F, et al. Human pregnancy is accompanied by modifications in B cell development and immunoglobulin profile. *J Reprod Immunol*. 2018;129:40-47.
116. Rinaldi SF, Makieva S, Saunders PT, Rossi AG, Norman JE. Immune cell and transcriptomic analysis of the human decidua in term and preterm parturition. *Mol Hum Reprod*. 2017;23:708-724.
117. Solders M, Gorchs L, Gidlof S, Tiblad E, Lundell AC, Kaipe H. Maternal adaptive immune cells in decidua parietalis display a more activated and coinhibitory phenotype compared to decidua basalis. *Stem Cells Int*. 2017;2017:8010961.
118. Huang B, Faucette AN, Pawlitz MD, et al. Interleukin-33-induced expression of PIBF1 by decidual B cells protects against preterm labor. *Nat Med*. 2017;23:128-135.
119. Redline RW, Faye-Petersen O, Heller D, Qureshi F, Savell V, Vogler C. Society for Pediatric Pathology PSAFINC: amniotic infection syndrome: nosology and reproducibility of placental reaction patterns. *Pediatr Dev Pathol*. 2003;6:435-448.
120. Redline RW. Inflammatory responses in the placenta and umbilical cord. *Semin Fetal Neonatal Med*. 2006;11:296-301.
121. Kim CJ, Romero R, Chaemsaitong P, Chaiyasit N, Yoon BH, Kim YM. Acute chorioamnionitis and funisitis: definition, pathologic features, and clinical significance. *Am J Obstet Gynecol*. 2015;213:S29-52.
122. Redline RW. Classification of placental lesions. *Am J Obstet Gynecol*. 2015;213:S21-28.
123. Xu Y, Plazyo O, Romero R, Hassan SS, Gomez-Lopez N. Isolation of leukocytes from the human maternal-fetal interface. *J Vis Exp*. 2015;(99):e52863.
124. Montecino-Rodriguez E, Dorshkind K. B-1 B cell development in the fetus and adult. *Immunity*. 2012;36:13-21.
125. Chung JB, Silverman M, Monroe JG. Transitional B cells: step by step towards immune competence. *Trends Immunol*. 2003;24:343-349.
126. Palanichamy A, Barnard J, Zheng B, et al. Novel human transitional B cell populations revealed by B cell depletion therapy. *J Immunol*. 2009;182:5982-5993.
127. Carsetti R, Kohler G, Lamers MC. Transitional B cells are the target of negative selection in the B cell compartment. *J Exp Med*. 1995;181:2129-2140.
128. Loder F, Mutschler B, Ray RJ, et al. B cell development in the spleen takes place in discrete steps and is determined by the quality of B cell receptor-derived signals. *J Exp Med*. 1999;190:75-89.
129. Weisel F, Shlomchik M. Memory B cells of mice and humans. *Annu Rev Immunol*. 2017;35:255-284.
130. Seifert M, Kuppers R. Human memory B cells. *Leukemia*. 2016;30:2283-2292.
131. Lund FE. Cytokine-producing B lymphocytes-key regulators of immunity. *Curr Opin Immunol*. 2008;20:332-338.
132. Shen P, Fillatreau S. Antibody-independent functions of B cells: a focus on cytokines. *Nat Rev Immunol*. 2015;15:441-451.
133. Griffin DO, Holodick NE, Rothstein TL. Human B1 cells in umbilical cord and adult peripheral blood express the novel phenotype CD20+ CD27+ CD43+ CD70. *J Exp Med*. 2011;208:67-80.
134. Shresta S, Pham CT, Thomas DA, Graubert TA, Ley TJ. How do cytotoxic lymphocytes kill their targets? *Curr Opin Immunol*. 1998;10:581-587.
135. Trapani JA, Smyth MJ. Functional significance of the perforin/granzyme cell death pathway. *Nat Rev Immunol*. 2002;2:735-747.
136. Trambas CM, Griffiths GM. Delivering the kiss of death. *Nat Immunol*. 2003;4:399-403.
137. Grossman WJ, Verbsky JW, Tollefsen BL, Kemper C, Atkinson JP, Ley TJ. Differential expression of granzymes A and B in human cytotoxic lymphocyte subsets and T regulatory cells. *Blood*. 2004;104:2840-2848.
138. Rock MT, Yoder SM, Wright PF, Talbot TR, Edwards KM, Crowe JE Jr. Differential regulation of granzyme and perforin in effector and memory T cells following smallpox immunization. *J Immunol*. 2005;174:3757-3764.
139. Takata H, Takiguchi M. Three memory subsets of human CD8+ T cells differently expressing three cytolytic effector molecules. *J Immunol*. 2006;177:4330-4340.
140. Lin L, Couturier J, Yu X, Medina MA, Kozinetz CA, Lewis DE. Granzyme B secretion by human memory CD4 T cells is less strictly regulated compared to memory CD8 T cells. *BMC Immunol*. 2014;15:36.
141. Alhakeem SS, Sindhava VJ, McKenna MK, et al. Role of B cell receptor signaling in IL-10 production by normal and malignant B-1 cells. *Ann N Y Acad Sci*. 2015;1362:239-249.
142. Moens L, Kane A, Tangye SG. Naive and memory B cells exhibit distinct biochemical responses following BCR engagement. *Immunol Cell Biol*. 2016;94:774-786.
143. Jelinek DF, Splawski JB, Lipsky PE. Human peripheral blood B lymphocyte subpopulations: functional and phenotypic analysis of surface IgD positive and negative subsets. *J Immunol*. 1986;136:83-92.
144. Liu YJ, Barthelemy C, de Bouteiller O, Arpin C, Durand I, Banchereau J. Memory B cells from human tonsils colonize mucosal epithelium and directly present antigen to T cells by rapid up-regulation of B7-1 and B7-2. *Immunity*. 1995;2:239-248.
145. Tangye SG, Tarlinton DM. Memory B cells: effectors of long-lived immune responses. *Eur J Immunol*. 2009;39:2065-2075.
146. Claes N, Fraussen J, Stinissen P, Hupperts R, Somers V. B cells are multifunctional players in multiple sclerosis pathogenesis: insights from therapeutic interventions. *Front Immunol*. 2015;6:642.
147. Halliley JL, Tipton CM, Liesveld J, et al. Long-lived plasma cells are contained within the CD19(-)CD38(hi)CD138(+) subset in human bone marrow. *Immunity*. 2015;43:132-145.
148. Landsverk OJ, Snir O, Casado RB, et al. Antibody-secreting plasma cells persist for decades in human intestine. *J Exp Med*. 2017;214:309-317.

149. Leandro MJ. B-cell subpopulations in humans and their differential susceptibility to depletion with anti-CD20 monoclonal antibodies. *Arthritis Res Ther.* 2013;15(Suppl 1):S3.
150. De Silva NS, Klein U. Dynamics of B cells in germinal centres. *Nat Rev Immunol.* 2015;15:137-148.
151. Klein U, Dalla-Favera R. Germinal centres: role in B-cell physiology and malignancy. *Nat Rev Immunol.* 2008;8:22-33.
152. Prins JR, Gomez-Lopez N, Robertson SA. Interleukin-6 in pregnancy and gestational disorders. *J Reprod Immunol.* 2012;95:1-14.
153. Mao H, Gao W, Ma C, et al. Human placental trophoblasts express the immunosuppressive cytokine IL-35. *Hum Immunol.* 2013;74:872-877.
154. Griffin DO, Rothstein TL. A small CD11b(+) human B1 cell subpopulation stimulates T cells and is expanded in lupus. *J Exp Med.* 2011;208(13):2591-2598.
155. Topping C, Petersen CC, Bjerg L, Kofod-Olsen E, Petersen T, Höllsberg P. The B1-cell subpopulation is diminished in patients with relapsing-remitting multiple sclerosis. *J Neuroimmunol.* 2013;262(1-2):92-99.
156. Inui M, Hirota S, Hirano K, et al. Human CD43+ B cells are closely related not only to memory B cells phenotypically but also to plasmablasts developmentally in healthy individuals. *Int Immunol.* 2015;27(7):345-355.
157. Deng C, Xiang Y, Tan T et al. The imbalance of B-lymphocyte subsets in subjects with different glucose tolerance: relationship with metabolic parameter and disease status. *J Diabetes Res.* 2017;2017:5052812.
158. Marie-Cardine A, Divay F, Dutot I, et al. Transitional B cells in humans: characterization and insight from B lymphocyte reconstitution after hematopoietic stem cell transplantation. *Clin Immunol.* 2008;127(1):14-25.
159. Ha YJ, Mun Y-C, Seong C-M, Lee JR. Characterization of phenotypically distinct B-cell subsets and receptor-stimulated mitogen-activated protein kinase activation in human cord blood B cells. *J Leukoc Biol.* 2008;84(6):1557-1564.
160. Seifert M, Sellmann L, Bloehdorn J, et al. Cellular origin and pathophysiology of chronic lymphocytic leukemia. *J Exp Med.* 2012;209(12):2183-2198.
161. de Masson A, Le Buanec H, Bouaziz JD. Purification and immunophenotypic characterization of human B cells with regulatory functions. *Methods Mol Biol.* 2014;1190:45-52.
162. Cherukuri A, Rothstein DM, Clark B, et al. Immunologic human renal allograft injury associates with an altered IL-10/TNF-alpha expression ratio in regulatory B cells. *J Am Soc Nephrol.* 2014;25(7):1575-1585.
163. Heidt S, Vergunst M, Anholts J, et al. B cell markers of operational tolerance can discriminate acute kidney allograft rejection from stable graft function. *Transplantation.* 2015;99(5):1058-1064.
164. Latorre I, Esteve-Sole A, Redondo D, et al. Calcineurin and mTOR inhibitors have opposing effects on regulatory T cells while reducing regulatory B cell populations in kidney transplant recipients. *Transpl Immunol.* 2016;35:1-6.
165. Tebbe B, Wilde B, Ye Z, et al. Renal transplant recipients treated with calcineurin-inhibitors lack circulating immature transitional CD19+CD24hiCD38hi regulatory B-lymphocytes. *PLoS ONE.* 2016;11(4):e0153170.
166. Luk F, Carreras-Planella L, Korevaar SS, et al. Inflammatory conditions dictate the effect of mesenchymal stem or stromal cells on B cell function. *Front Immunol.* 2017;8:1042.
167. Demoersman J, Pochard P, Framery C, et al. B cell subset distribution is altered in patients with severe periodontitis. *PLoS ONE.* 2018;13(2):e0192986.
168. Li S, Ma F, Hao Hu, et al. Marked elevation of circulating CD19(+) CD38(hi)CD24(hi) transitional B cells give protection against neonatal sepsis. *Pediatr Neonatol.* 2018;59(3):296-304.
169. Guerreiro-Cacais AO, Levitskaya J, Levitsky V. B cell receptor triggering sensitizes human B cells to TRAIL-induced apoptosis. *J Leukoc Biol.* 2010;88(5):937-945.
170. So NS, Ostrowski MA, Gray-Owen SD. Vigorous response of human innate functioning IgM memory B cells upon infection by *Neisseria gonorrhoeae*. *J Immunol.* 2012;188(8):4008-4022.
171. Heath E, Begue-Pasor N, Chaganti S, et al. Epstein-Barr virus infection of naive B cells in vitro frequently selects clones with mutated immunoglobulin genotypes: implications for virus biology. *PLoS Pathog.* 2012;8(5):e1002697.
172. Cantaert T, Doorenspleet ME, FrancoSalinas G, et al. Increased numbers of CD5+ B lymphocytes with a regulatory phenotype in spondylarthritis. *Arthritis Rheum.* 2012;64(6):1859-1868.
173. Toapanta FR, Bernal PJ, Sztejn MB. Diverse phosphorylation patterns of B cell receptor-associated signaling in naive and memory human B cells revealed by phosphoflow, a powerful technique to study signaling at the single cell level. *Front Cell Infect Microbiol.* 2012;2:128.
174. Jansen MA, van denHeuvel D, vanZelm MC, et al. Decreased memory B cells and increased CD8 memory T cells in blood of breastfed children: the generation R study. *PLoS ONE.* 2015;10(5):e0126019.
175. Castaneda DM, Salgado DM, Narvaez CF. B cells naturally induced during dengue virus infection release soluble CD27, the plasma level of which is associated with severe forms of pediatric dengue. *Virology.* 2016;497:136-145.
176. Wu X, Wang G, Chen X, et al. Impaired T cell-dependent humoral immune response associated with juvenile-onset recurrent respiratory papillomatosis progression. *Sci Rep.* 2016;6:36378.
177. Nakayama Y, Kosek J, Capone L, Hur EM, Schafer PH, Ringheim GE. Aiols overexpression in systemic lupus erythematosus B cell subtypes and BAFF-induced memory B cell differentiation are reduced by CC-220 modulation of cereblon activity. *J Immunol.* 2017;199(7):2388-2407.
178. Anolik Jh, Ravikumar R, Barnard J, et al. Cutting edge: anti-tumor necrosis factor therapy in rheumatoid arthritis inhibits memory B lymphocytes via effects on lymphoid germinal centers and follicular dendritic cell networks. *J Immunol.* 2008;180(2):688-692.
179. Tian C, Luskink GK, Dischert KM, Higginbotham JN, Shepherd BE, Crowe JE. Immunodominance of the VH1-46 antibody gene segment in the primary repertoire of human rotavirus-specific B cells is reduced in the memory compartment through somatic mutation of nondominant clones. *J Immunol.* 2008;180(5):3279-3288.
180. Ghannam A, Pernollet M, Fauquert J-I, et al. Human C3 deficiency associated with impairments in dendritic cell differentiation, memory B cells, and regulatory T cells. *J Immunol.* 2008;181(7):5158-5166.
181. Berkowska Ma, Driessen G, Bikos V, et al. Human memory B cells originate from three distinct germinal center-dependent and -independent maturation pathways. *Blood.* 2011;118(8):2150-2158.
182. Morbach H, Wiegering V, Richl P, et al. Activated memory B cells may function as antigen-presenting cells in the joints of children with juvenile idiopathic arthritis. *Arthritis Rheum.* 2011;63(11):3458-3466.
183. Wu YC, Kipling D, Dunn-Walters DK. The relationship between CD27 negative and positive B cell populations in human peripheral blood. *Front Immunol.* 2011;2:81.
184. Labuda LA, Ateba-Ngoa U, Feugang EN, et al. Alterations in peripheral blood B cell subsets and dynamics of B cell responses during human schistosomiasis. *PLoS Negl Trop Dis.* 2013;7(3):e2094.
185. Degauque N, Elong Ngono A, Akl A, et al. Characterization of antigen-specific B cells using nominal antigen-coated flow-beads. *PLoS ONE.* 2013;8(12):e84273.
186. Zhang L, Luo Z, Sieg Sf, et al. Plasmacytoid dendritic cells mediate synergistic effects of HIV and lipopolysaccharide on CD27+ IgD-memory B cell apoptosis. *J Virol.* 2014;88(19):11430-11441.

187. Bagnara D, Squillario M, Kipling D, et al. A reassessment of IgM memory subsets in humans. *J Immunol.* 2015;195(8):3716-3724.
188. Czarnowicki T, Gonzalez J, Bonifacio KM, et al. Diverse activation and differentiation of multiple B-cell subsets in patients with atopic dermatitis but not in patients with psoriasis. *J Allergy Clin Immunol.* 2016;137(1):118-129.e5.
189. Hayashi M, Yanaba K, Umezawa Y, et al. IL-10-producing regulatory B cells are decreased in patients with psoriasis. *J Dermatol Sci.* 2016;81(2):93-100.
190. Mensah F, Bansal A, Berkovitz S, et al. Extended B cell phenotype in patients with myalgic encephalomyelitis/chronic fatigue syndrome: a cross-sectional study. *Clin Exp Immunol.* 2016;184(2):237-247.
191. Woda M, Friberg H, Currier JR, et al. Dynamics of dengue virus (DENV)-specific B cells in the response to DENV serotype 1 infections, using flow cytometry with labeled virions. *J Infect Dis.* 2016;214(7):1001-1009.
192. Martins C, Lima J, Nunes G, Borrego LM. Pregnancy alters the circulating B cell compartment in atopic asthmatic women, and transitional B cells are positively associated with the development of allergy manifestations in their progeny. *Am J Reprod Immunol.* 2016;76(6):465-474.
193. Colonna-Romano G, Bulati M, Aquino A, et al. A double-negative (IgD-CD27-) B cell population is increased in the peripheral blood of elderly people. *Mech Ageing Dev.* 2009;130(10):681-690.
194. Jacobi AM, Huang W, Wang T, et al. Effect of long-term belimumab treatment on B cells in systemic lupus erythematosus: extension of a phase II, double-blind, placebo-controlled, dose-ranging study. *Arthritis Rheum.* 2010;62(1):201-210.
195. Weller S, Bonnet M, Delagreverie H, et al. IgM+IgD+CD27+ B cells are markedly reduced in IRAK-4-, MyD88-, and TIRAP- but not UNC-93B-deficient patients. *Blood.* 2012;120(25):4992-5001.
196. Clemente A, Pons J, Lanio N, et al. Increased STAT3 phosphorylation on CD27(+) B-cells from common variable immunodeficiency disease patients. *Clin Immunol.* 2015;161(2):77-88.
197. Corneth O, Verstappen G, Paulissen S, et al. Enhanced Bruton's tyrosine kinase activity in peripheral blood B lymphocytes from patients with autoimmune disease. *Arthritis Rheumatol.* 2017;69(6):1313-1324.
198. Torigoe M, Iwata S, Nakayama S, et al. Metabolic reprogramming commits differentiation of human CD27(+)IgD(+) B cells to plasmablasts or CD27(-)IgD(-) cells. *J Immunol.* 2017;199(2):425-434.
199. Hu F, Zhang W, Shi L, et al. Impaired CD27(+)IgD(+) B cells with altered gene signature in rheumatoid arthritis. *Front Immunol.* 2018;9:626.
200. Morbach H, Eichhorn EM, Liese JG, Girschick HJ. Reference values for B cell subpopulations from infancy to adulthood. *Clin Exp Immunol.* 2010;162(2):271-279.
201. Lin W, Zhang P, Chen H, et al. Circulating plasmablasts/plasma cells: a potential biomarker for IgG4-related disease. *Arthritis Res Ther.* 2017;19(1):25.
202. Bennett MS, Trivedi S, Iyer AS, Hale JS, Leung DT. Human mucosal-associated invariant T (MAIT) cells possess capacity for B cell help. *J Leukoc Biol.* 2017;102(5):1261-1269.

SUPPORTING INFORMATION

Additional supporting information may be found online in the Supporting Information section at the end of the article.

How to cite this article: Leng Y, Romero R, Xu Y, et al. Are B cells altered in the decidua of women with preterm or term labor? *Am J Reprod Immunol.* 2019;81:e13102. <https://doi.org/10.1111/aji.13102>