

Lillias Maguire ORCID iD: 0000-0002-6041-2416

Karin Hardiman ORCID iD: 0000-0001-5172-2116

**Title:** Surgical Management of Primary Colonic Lymphoma: Big Data for a Rare Problem

**Running Head:** Surgery for Primary Colonic Lymphoma

Lillias H. Maguire MD<sup>1</sup>, Timothy M. Geiger MD<sup>2</sup>, Karin M. Hardiman MD<sup>1</sup>, Scott E. Regenbogen MD MPH<sup>1</sup>, M. Benjamin Hopkins MD<sup>2</sup>, Roberta L. Muldoon MD<sup>2</sup>, and Alexander T. Hawkins MD, MPH<sup>2</sup>

<sup>1</sup> University of Michigan, Division of General Surgery, Section of Colon & Rectal Surgery, Ann Arbor, MI.

<sup>2</sup> Vanderbilt University Medical Center, Division of General Surgery, Section of Colon & Rectal Surgery, Nashville, TN.

Address for correspondence:

Alexander T. Hawkins, MD, MPH

Section of Colon & Rectal Surgery

Vanderbilt University

1161 21<sup>st</sup> Ave South

Room D5248 MCN

Nashville, TN 37232

Office: 615.343.4612

Fax: 615.343.4615

Email: alex.hawkins@vanderbilt.edu

Conflicts of Interest: None

Support: None

This is the author manuscript accepted for publication and undergone full peer review but has not been through the copyediting, typesetting, pagination and proofreading process, which may lead to differences between this version and the [Version of Record](#). Please cite this article as [doi: 10.1002/jso.25582](https://doi.org/10.1002/jso.25582).

This article is protected by copyright. All rights reserved.

Presented as a poster presentation at the American Society of Colon and Rectal Surgeons, Annual Meeting, May 19-23, 2018, Nashville, TN.

Author contribution:

Study conception and design: Maguire, Hawkins

Acquisition of data: Hawkins

Analysis and interpretation of data: Maguire, Hawkins

Drafting of Manuscript: Maguire, Hawkins

Critical revision: Maguire, Geiger, Hardiman, Regenbogen, Ford, Muldoon, Hopkins, Hawkins

### **Abstract**

*Background and Objectives:* Primary colonic lymphoma (PCL) is rare, heterogeneous, and presents a therapeutic challenge for surgeons. Optimal treatment strategies are difficult to standardize, leading to variation in therapy. Our objective was to describe the patient characteristics, short term outcomes, and five-year survival of patients undergoing non-palliative surgery for PCL.

*Methods:* We performed a retrospective cohort analysis in the National Cancer Data Base. Included patients underwent surgery for PCL between 2004-2014. Patients with metastases and palliative operations were excluded. Univariate predictors of overall survival we analyzed using multivariable Cox proportional-hazard analysis.

*Results* We identified 2,153 patients. Median patient age was 68. Diffuse large B-cell lymphoma accounted for 57% of tumors. 30- and 90-Day mortality were high (5.6% and 11.1%, respectively). 39% of patients received adjuvant chemotherapy. For patients surviving 90 days, 5-year survival was 71.8%.

Chemotherapy improved survival (Surgery+Chemo 75.4% vs. Surgery 68.6%;  $p=0.01$ ). Adjuvant chemotherapy was associated with overall survival after controlling for age, comorbidity, and lymphoma subtype (HR 1.27, 95% CI 1.07-1.51;  $p=0.01$ ).

*Conclusions* Patients undergoing surgery for PCL have high rates of margin positivity and high short-term mortality. Chemotherapy improves survival, but <50% receive it. These data suggest opportunity for improvement of care in patients with PCL.

**Synopsis:** Surgical patients with primary colonic lymphoma have high short term mortality and low rates of R0 resection. Survival is improved with adjuvant chemotherapy, but <50% receive this treatment.

**Data Availability Statement:** Data from this manuscript will not be shared, but are available on reasonable request to the NCDB by investigators associated with Commission on Cancer (CoC) cancer programs. Data used in this analysis was obtained from the National Cancer Database (NCDB) Participant Use File (PUF). The PUF contains de-identified patient level data that do not identify hospitals, health care providers, or patients as agreed to in the Business Associate Agreement that each CoC-accredited program has signed with the American College of Surgeons. The PUFs are designed to provide investigators associated with CoC-accredited cancer programs with a data resource they can use to review and advance the quality of care delivered to cancer patients through analyses of cases reported to the NCDB. NCDB PUFs are only available

through an application process to investigators associated with CoC-accredited cancer programs. Per agreement with the NCDB, the authors are not allowed to make this data publicly available. (<https://www.facs.org/quality-programs/cancer/ncdb/puf>)

**KeyWords:** Extra-nodal lymphoma, primary gastrointestinal lymphoma, colorectal surgery

## Introduction

Primary gastrointestinal (GI) lymphoma is a rare heterogeneous malignancy arising in the GI tract as a primary extra-nodal tumor. The colorectum accounts for 6-12% of GI lymphoma, but among colonic neoplasms primary colonic lymphoma (PCL) is a rare entity: representing <1% of all colorectal tumors.<sup>1</sup> The vast majority of PCL arises from the B-cell lineage, but as they may arise at any stage of maturation of T-cells, B-cells, or Natural Killer (NK) cells, there exists a large number of potential histologic sub-types.<sup>2</sup> Treatment of lymphoma of the colon or rectum may include chemotherapy, radiation, and surgery.

The outcomes of, and indications for, surgical resection in colorectal lymphoma remain unclear. Multi-institutional studies indicate 48-61% of patients with PCL have surgery.<sup>3-5</sup> Surgery provides definitive diagnosis, palliates symptoms, may prevent tumor perforation on chemotherapy, provides local control for aggressive disease, and may be definitive treatment for chemotherapy-resistant indolent histologic sub-types. However, surgery is

morbid, does not treat systemic disease, and does not definitively improve survival.<sup>6,7</sup> Due to the rarity of PCL, the bulk of the available surgical data is retrospective and combines multiple gastrointestinal sites, pathologic stages, and histologic subtypes.<sup>3,4</sup> Therefore, when a surgical approach, elective or urgent, is chosen for a PCL patient, there is a knowledge gap in the expected short and long term outcome of the patient

The National Cancer Database (NCDB) captures approximately 70% of newly diagnosed cancers in the United States and demonstrates concordance with most population-based registries.<sup>8</sup> Therefore, the NCDB is a platform for interrogating “real world” outcomes of surgical patients with PCL. The purpose of this study is to provide a thorough, modern, multi-institutional description of the short and long terms outcomes of patients undergoing non-palliative surgical treatment of primary colonic lymphoma in order to inform treatment decisions and patient counselling. We hypothesize that the addition of adjuvant chemotherapy will be associated with increased survival.

## **Methods**

### *Data Source*

Data for this study was extracted from the Participant User File of the National Cancer Database (NCDB). The NCDB is a joint project between the American College of Surgeons’ Commission on Cancer (CoC) and the American Cancer Society.<sup>9, 10</sup> The NCDB gathers data from more than 1700 CoC-accredited centers across the United States and Puerto Rico. The NCDB is

estimated to capture approximately 70% of new cancer diagnoses and now contains more than 30 million patient files.

### *Study Design*

This project was reviewed and deemed exempt by the Vanderbilt University Medical Center Institutional Review Board (Protocol 161707). We conducted a retrospective, cohort analysis of a prospectively maintained database. We included all adult patients in the NCBD from 2004-2014 with a diagnosis of primary colonic lymphoma (*International Classification of Diseases for Oncology, 3rd Edition* SEER Topography Codes C180-2, C184, C186-9, C199 with Histology Code in Appendix 1). Exclusion criteria included Stage IV disease, patients operated on for palliative indications (as defined in the NCDB), and surgery performed outside the reporting facility. The primary exposure was the addition of adjuvant chemotherapy to surgical resection, as defined by the NCDB.

### *Outcomes*

The primary outcome of this study was overall survival. Due to the high rate of 90-day mortality, comparisons were made only for patients that survived 90 days. Secondary outcomes included R0 resection, 30 & 90-day mortality. The NCDB does not capture disease-free survival.

### *Covariates*

Patient level variables included age, gender, race, and education and income as markers of socio-economic status. Comorbidities are captured by the NCDB's modification of the Charlson score, which excludes the primary cancer diagnosis condition and then reports the Charlson score as 0 (no comorbidities), 1 (Total Charlson score of 1) or 2 (Total Charlson Score of 2 or more). Hospital level data collected included the cancer designation of the hospital where the surgery was performed (community cancer program, comprehensive community cancer program, academic/research program). Type of PCL was also determined using *International Classification of Diseases for Oncology, 3rd Edition SEER* Histology code. (Appendix 1). For the survival analysis, marginal and follicular lymphoma were combined to form a single category.

### *Statistical Analysis*

Continuous and categorical data are expressed as mean with standard deviation and proportions, with the exception of continuous variables with grossly skewed distributions that are reported as the median with the interquartile range. Continuous and categorical variables were compared with the Student's T-test and Chi-square test respectively. For the survival analysis, the log-rank test was used for bivariate comparison. All factors found to be significant for overall survival in a bivariate analysis were compared using a multivariable Cox proportional hazard model. All variables were initially considered using a backwards Wald stepwise procedure with a p value of 0.20 to enter and 0.05 to

eliminate variables. SAS statistical software (version 9.3; SAS Institutes Inc., Cary NC, USA) was used for all analyses. All tests were two sided with an alpha level of 0.05.

## Results

### *Exposure and Demographics*

After applying exclusion criteria, a total of 2,153 patients with PCL who underwent surgery were identified in the NCDB from 2004-2014. (Figure 1 & Table 1) The median age was 68 (inter-quartile range 56-78) and 769 (35.7%) were female. 867 patients (40.2%) underwent both surgery and adjuvant chemotherapy. The majority of patients had a DLBCL subtype (57.0%) with marginal (10.3%) and follicular (7.2%) comprising the top three subtypes. (Figure 2) Factors associated with the use of adjuvant chemotherapy included younger age, male gender, private insurance, treatment at a community cancer program, and DLBCL subtype.

### *Perioperative Outcomes*

Preoperative chemo- and radio-therapy were rarely administered in this cohort, suggesting that the identified group of patients represent a “surgery first” approach rather than treatment failures. (Table 2). Overall, rates of R0 resection were relatively low (54.2%) and were modestly higher in the surgery-only cohort (Surgery+Chemo 50.7% vs. Surgery 56.5%;  $p=0.008$ ). Postoperative radiation was rarely administered (1.8% total). Rates of both 30 (5.6%) and 90-day



(11.1%) mortality were high. To further investigate the role of surgery in long term outcomes of PCL patients, peri-operative deaths were excluded.

### *Overall Survival*

1915 (88.9%) patients survived 90 days and were included in the analysis of overall survival. Over a mean follow up of 53 months, the 5-year overall survival for the cohort was 71.8%. 39% of patients received adjuvant chemotherapy. The administration of adjuvant chemotherapy was associated with improved 5-year overall survival (Surgery+Chemo 75.4%% vs. Surgery 68.6%;  $p=0.01$ ). (Figure 3) This relationship remained in a multivariate Cox Proportional Hazard analysis that included age, Charlson comorbidity score and lymphoma subtype (HR 1.22; 95% CI 1.02-1.45;  $p=0.02$ ) (Table 3). R0 resection was not associated with overall survival. An analysis of overall survival by lymphoma subtype showed follicular/marginal lymphoma to be associated with the best survival and T-Cell lymphoma to be associated with the worst. (Figure 4).

### **Discussion**

We present a modern cohort of 2,153 non-metastatic surgical PCL patients undergoing non-palliative resection. Our analyses reveal that PCL patients suffer high short term mortality, have high rates of margin positivity, and have an overall survival which is associated with age, comorbid conditions, histologic sub-type, and receipt of adjuvant chemotherapy.

The older age and male predominance observed in our cohort is similar to that reported in multiple studies across diverse patient populations.<sup>5,11,12</sup> Similarly, the preponderance of B-cell lineage tumors, in particular DLBCL, is comparable to other reported series of GI and colorectal lymphoma<sup>4</sup>.

In comparison to other large published series, our study reflects modern care patterns and focuses on non-metastatic surgical patients. The largest study of PCL to date included 3,342 patients collected from the Surveillance, Epidemiology, and End Results (SEER) database, and demonstrated improved survival among patients who underwent surgery.<sup>5</sup> However, further survival analyses demonstrated a benefit from surgery only among early-stage patients, patients with right-sided tumors, and patients with DLBCL. Patients with indolent lymphoma, left-sided lesions, and advanced disease did not experience a survival benefit of surgery. Notably, however, more than 30% of patients in the study were treated prior to the year 2000, 21% had stage IV disease, and only 60% underwent surgery.

Unlike this and other reported series of PCL, our study focused only on likely oncologically “good risk” patients, in that they received non-palliative surgery and that Stage IV patients were excluded. However, despite the exclusion criteria, analysis revealed a high rate of margin positivity and a high 30- and 90-day mortality. Only 54% of patients achieved R0 resection. The de-identified nature of the database makes it impossible to determine the reason for R1 resection, but these data have implications for surgical planning and could

provide a rationale for consideration of neoadjuvant therapy. R0 resection was not predictive of overall survival but may have other implications for patients.

Both 30 and 90- day mortality were unexpectedly high in this analysis, comparing unfavorably to published short term mortality rates for surgical patients with other gastrointestinal cancers<sup>13</sup>. Potential contributory factors include the advanced age of the patients and comorbid conditions, although surgical and tumor-specific factors may also contribute. Although the nature of the database prohibits complete understanding of the high mortality rate, it should be considered in operative planning and patient counselling.

Multivariable analysis identified age, Charlson score, lymphoma histologic sub-type, and receipt of adjuvant chemotherapy as independent predictors of overall survival. Among these, administration of chemotherapy is the sole modifiable risk factor. Adjuvant chemotherapy has previously been shown to be favorably associated with overall survival<sup>14</sup>. However only 39% of patients in this study received it. The low rate of adjuvant chemotherapy usage may be due to patient fitness, surgical complications, patient refusal, or failure to offer chemotherapy after resection.

The low rates of neoadjuvant therapy in our study indicate that the majority of surgical patients underwent a “surgery first” approach, whether by selected treatment strategy or surgical urgency. Not included in this study is the outcome of the heterogeneous population of patients who undergo non-operative therapy alone. When considering surgery versus chemotherapy for a PCL

patient, intestinal perforation and hemorrhage on chemotherapy is often a major concern. Recognition that this complication is less frequently observed than previously expected<sup>15</sup> has led to a paradigm shift in the treatment of gastric lymphoma. Successful employment of neoadjuvant chemo-radiation has diminished the role of surgery<sup>16</sup>, allowing for organ preservation with equivalent survival outcome<sup>17</sup>. Given the high rate of margin positivity, high operative mortality, and the low rate of adjuvant chemotherapy, consideration of up-front chemotherapy/radiation is warranted in PCL as well.

Our study has several limitations based on the number of variables available for the analysis. We were reliant on the NCDB coding of staging and metastatic disease. In addition, we lacked data on the type of chemotherapy administered and some lymphoma-specific variables such as the International Prognostic Index. As we do not have reliable data on decision-making around chemotherapy administration, the potential for selection bias exists in the overall survival analysis. It is unclear whether the benefit we observe in adjuvant therapy is related to the chemotherapy or merely the fitness to receive chemotherapy. We attempted to address this by only including patients who survived for 90 days in our survival analysis. Furthermore, the lack of coding of urgent versus elective surgeries makes it impossible to determine the role of acute lymphoma presentations.

## Conclusions

In summary, surgical patients with PCL suffer high rates of short term mortality, are likely to have R1 or R2 resections, and are relatively unlikely to receive adjuvant therapy, although adjuvant chemotherapy provides a clear survival benefit. Prognostication of surgical patient outcome may be improved by these results: overall survival is associated with age, comorbidity score, lymphoma subtype, and administration of adjuvant chemotherapy. Despite the limitations of the analysis, these data may assist physicians in surgical planning, patient counselling, and designing further studies for this rare and morbid malignancy.

## Disclosures

The American College of Surgeons and the Commission on Cancer have not verified and are not responsible for the analytic or statistical methodology employed, or the conclusions drawn from these data by the investigators.

## References:

1. Fan CW., Changchien CR, Wang JY et al. Primary colorectal lymphoma. *Diseases of the Colon & Rectum*. 2000; 43(9): 1277-1282.
2. Swerdlow SH, Campo E, Pileri SA, et al. The 2016 revision of the World Health Organization classification of lymphoid neoplasms. *Blood*. 2016; 127: 2375-2390.
3. Kim SJ, et al. "Multicenter retrospective analysis of 581 patients with primary intestinal non-hodgkin lymphoma from the Consortium for Improving Survival of Lymphoma (CISL)." *BMC Cancer*. (2011): 11(1): 321.
4. Cheung MC, Housri N, Ogilvie MP, Sola JE, Koniaris LG. Surgery does not adversely affect survival in primary gastrointestinal lymphoma. *Journal of Surgical Oncology*. 2009; 100(1): 59-64.

5. Cai YB, Chen H, He JJ, et al. The role of surgical intervention in primary colorectal lymphoma: A SEER population-based analysis. *Oncotarget*. 2016; 7(44): 72263.
6. Lai YL, Lin, JK, Liang WY, Huang Y, Chang SC. (2011). Surgical resection combined with chemotherapy can help achieve better outcomes in patients with primary colonic lymphoma. *Journal of Surgical Oncology*. 2011; 104(3), 265-268.
7. Freedman AS, Friedberg JW. Initial treatment of limited stage diffuse large B cell lymphoma. In A. R. Rosmarin (Ed.) *UpToDate* (2018). Retrieved August 9, 2018 from:  
  
<https://www.uptodate.com/contents/initial-treatment-of-limited-stage-diffuse-large-b-cell-lymphoma>
8. Lerro CC, Robbins AS, Phillips JL, Stewart AK. Comparison of cases captured in the national cancer data base with those in population-based central cancer registries. *Ann Surg Oncol*. 2013; 20(6):1759-65.
9. Winchester DP, Stewart AK, Phillips JL, Ward EE. The National Cancer Data Base: Past, Present, and Future. *Ann Surg Oncol*. 2010;17(1):4-7.
10. Bilimoria KY, Stewart AK, Winchester DP, Ko CY. The National Cancer Data Base: a powerful initiative to improve cancer care in the United States. *Ann Surg Oncol*. 2008;15(3):683-90.
11. Ge Z, Liu Z, Hu X. Anatomic distribution, clinical features, and survival data of 87 cases primary gastrointestinal lymphoma. *World J Surg Oncol*. 2016; 14: 85.
12. Kim YH, Lee JH, Yang SK, et al. Primary colon lymphoma in Korea: a KASID (Korean Association for the Study of Intestinal Diseases) Study. *Digestive Diseases and Sciences*. 2005; 50: 2243-2247.
13. Damhuis RA, Wijnhoven BP, Plaisier PW, Kirkels WJ, Kranse R, van Lanschot JJ. Comparison of 30-day, 90-day and in-hospital postoperative mortality for eight different cancer types. *Br J Surg*. 2012; 99(8):1149-54.
14. Chen Y, Chen Y, Chen S, et al. Primary Gastrointestinal Lymphoma: A Retrospective Multicenter Clinical Study of 415 Cases in Chinese Province of Guangdong and a Systematic Review Containing 5075 Chinese Patients. *Medicine*. 2015; 94(47): e2119.
15. Brincker H, D'Amore F. A retrospective analysis of treatment outcome in 106 cases of localized gastric non-Hodgkin lymphomas. Danish Lymphoma Study Group, LYFO. *Leuk Lymphoma*. 1995; 18: 281-288.

16. Yoon SS, Coit DG, Portlock CS, Karpeh MS. The diminishing role of surgery in the treatment of gastric lymphoma. *Ann Surg.* 2004; 240(1): 28-37.
17. Willich NA, Reinartz G, Horst EJ, et al. Operative and conservative management of primary gastric lymphoma: interim results of a German multicenter study. *Int J Radiat Oncol Biol Phys.* 2000; 46: 895–901.
18. [dataset] <https://www.facs.org/quality-programs/cancer/ncdb/puf>

**Figures:**

Figure 1: Flowchart of inclusion and exclusion criteria from National Cancer Database (NCDB).

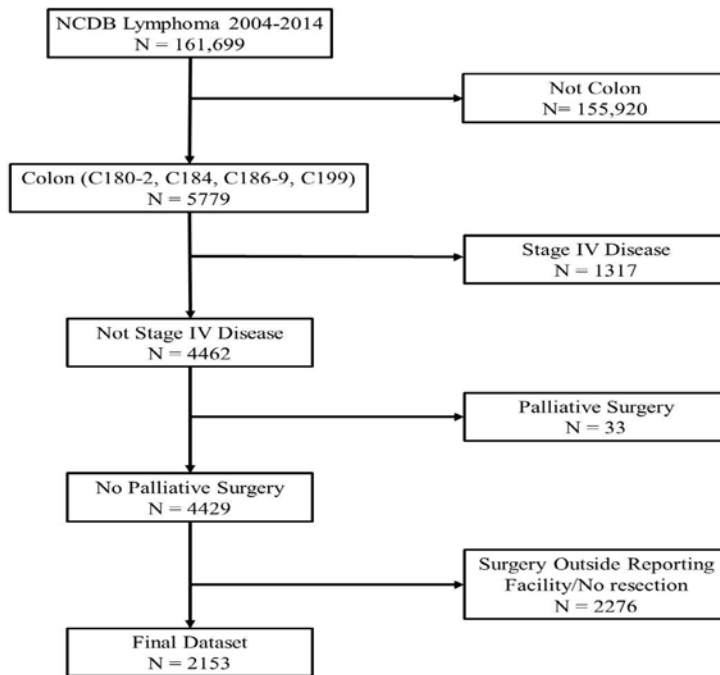


Figure 2: Distribution of primary colonic lymphoma histologic sub-type. Abbreviations: DLBCL – diffuse large B-cell lymphoma, NHL – non-Hodgkin’s Lymphoma, NOS – not otherwise specified

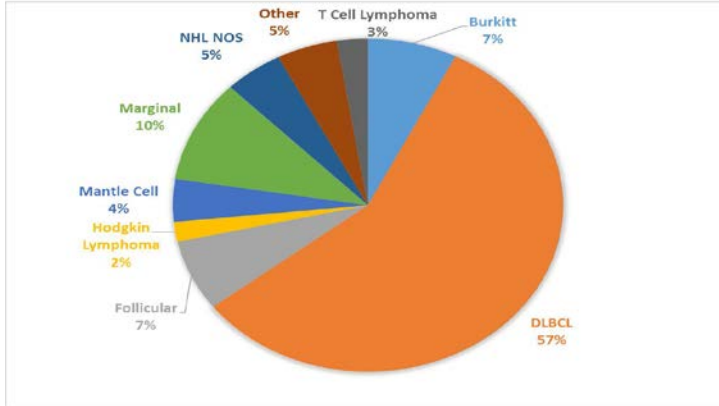


Figure 3: Kaplan Meier Curve for Overall Survival Stratified by Adjuvant Chemotherapy

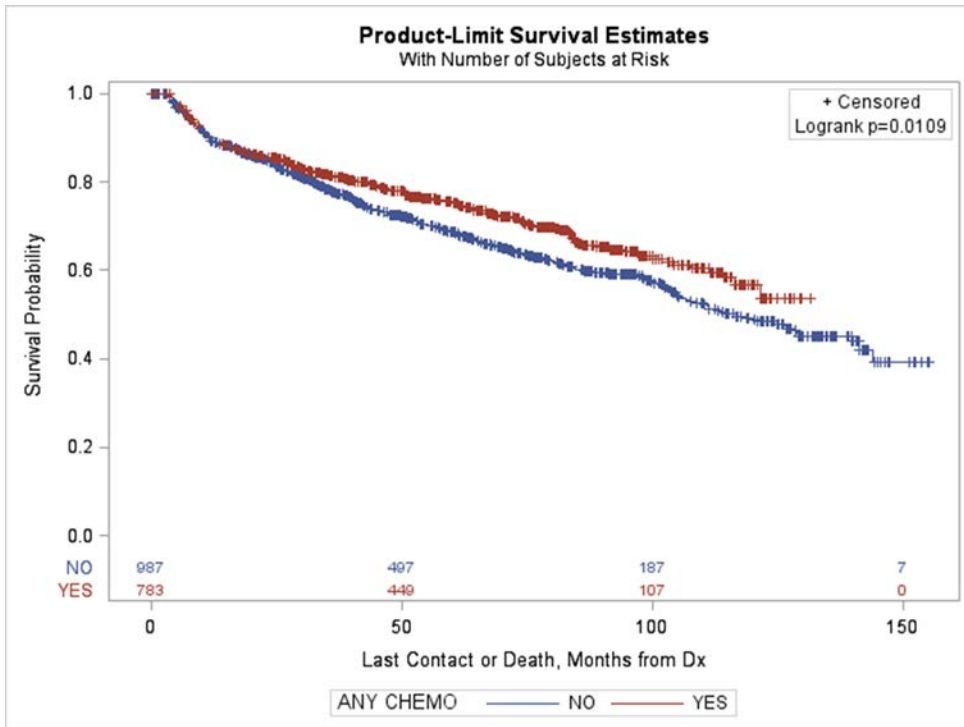




Figure 4: Kaplan Meier Curve for Overall Survival Stratified by Lymphoma Subtype.  
 Abbreviations: DLBCL – diffuse large B-cell lymphoma, NHL – non-Hodgkin’s Lymphoma,  
 NOS – not otherwise specified.

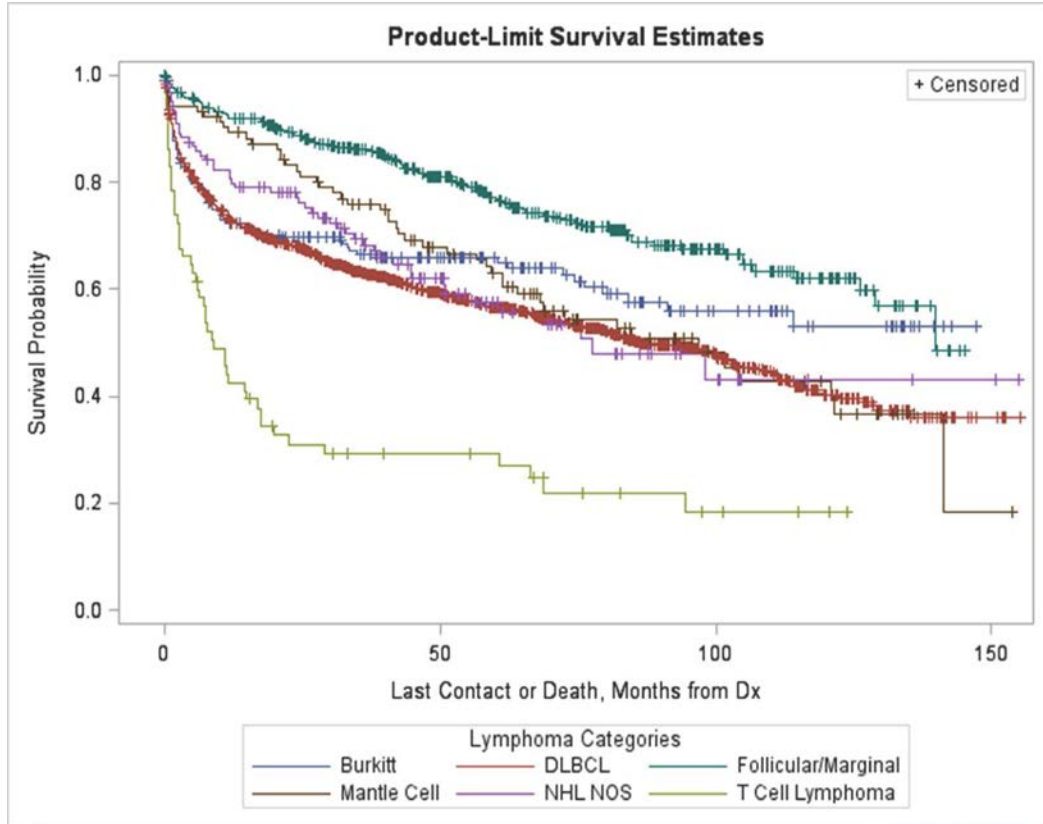


Table 1: Patient characteristics grouped by treatment with surgery alone (n=1286) versus surgery with neoadjuvant or adjuvant chemotherapy (n = 867).

	All (n=2153)	Surgery Alone (n=1286)	Surgery + Chemo (n= 867)	p-value
Age, median, y (IQR)	68 (56-78)	71 (59-81)	64 (52-74)	<0.001
Female gender	769 (35.7%)	494 (38.4%)	275 (31.7%)	0.001
Race				0.70
White	1895 (88.0%)	1130 (87.9%)	765 (88.2%)	
Black	137 (6.4%)	86 (6.7%)	51 (5.8%)	
Asian/Other	121 (5.6%)	70 (5.4%)	51 (5.9%)	
Insurance Type				<0.001

Private	784 (36.4%)	416 (32.3%)	368 (42.4%)	
Medicare	1155 (53.6%)	751 (58.4%)	404 (46.6%)	
Medicaid	91 (4.2%)	49 (3.8%)	42 (4.8%)	
Other	56 (2.6%)	37 (2.9%)	19 (2.2%)	
Uninsured	67 (3.1%)	33 (2.6%)	34 (3.9%)	
Median Household Income by ZipCode				0.39
< \$38,000	254 (12.2%)	215 (16.9%)	132 (15.5%)	
\$38,000-\$47,999	397 (19.1%)	308 (24.3%)	212 (24.8%)	
\$48,000-62,999	565 (27.3%)	351 (27.7%)	219 (25.6%)	
> \$63,000	857 (41.3%)	394 (31.1%)	291 (34.1%)	
Low Education (> 21% of adults not graduating from high school)	331 (15.4%)	203 (15.8%)	128 (14.7%)	0.51
Urban-Rural Continuum				0.79
Metro	1699 (78.9%)	1015 (78.9%)	684 (78.9%)	
Urban	412 (19.1%)	23 (1.8%)	19 (2.2%)	
Rural	42 (1.9%)	248 (19.3%)	164 (18.9%)	
Distance Traveled, median, miles (IQR)	8 (3.6-19.9)	7.5 (3.4-19.1)	8.6 (4.0-20.7)	0.06
Charlson Score				0.11
0	1591 (73.9%)	932 (72.5%)	659 (76.0%)	
1	394 (18.3%)	243 (18.9%)	151 (17.4%)	
>1	168 (7.8%)	111 (8.6%)	57 (6.6%)	
Facility				0.02
Community Cancer Program	635 (29.5%)	354 (27.5%)	281 (32.4%)	
Comprehensive Community Cancer Program	975 (45.3%)	609 (47.4%)	366 (42.2%)	
Academic/Research Program	543 (25.2%)	323 (25.1%)	220 (25.4%)	

Lymphoma Subtype				<0.001
DLBCL	1228 (57.0%)	655 (50.9%)	573 (66.1%)	
Burkitt	143 (6.6%)	56 (4.3%)	87 (10.0%)	
Follicular	155 (7.2%)	107 (8.3%)	48 (5.5%)	
Hodgkin	45 (2.1%)	34 (2.6%)	11 (1.3%)	
Mantle Cell	76 (3.5%)	48 (3.7%)	28 (3.2%)	
Marginal	243 (11.3%)	216 (16.8%)	27 (3.1%)	
NHL NOS	110 (4.7%)	62 (4.8%)	48 (5.5%)	
T-Cell	51 (2.4%)	32 (2.5%)	26 (3.0%)	
Other	102 (4.7%)	76 (5.9%)	19 (2.2%)	

DLBCL: diffuse large B-cell lymphoma, NHL: non-Hodgkin lymphoma, NOS: not otherwise specified. IQR: inter-quartile range.

Table 2: Treatment characteristics, short term outcomes, and overall survival of patients treated with surgery alone (n = 1286) versus with surgery and chemotherapy (n = 867).

	All (n=2153)	Surgery Alone (n=1286)	Surgery + Chemo (n=867)	p-value
Preoperative Chemotherapy	33 (1.5%)	N/A	33 (3.8%)	
Preoperative Radiation	5 (0.2%)	1 (0.1%)	4 (0.4%)	0.07
R0 resection	1167 (54.2%)	727 (56.5%)	440 (50.7%)	0.008
Length of Stay, d median (IQR)	6 (4-9)	6 (4-9)	6 (4-8)	0.01
Post Operative Chemotherapy	840 (39.0%)	N/A	840 (96.9%)	
Post Operative Radiation	38 (1.8%)	18 (1.4%)	20 (2.3%)	0.11

30-day Readmission	143 (6.6%)	90 (7.0%)	53 (6.1%)	0.41
30-day Mortality	121 (5.6%)	108 (9.1%)	13 (1.6%)	<0.001
90-Day Mortality	238 (11.1%)	197 (16.6%)	41 (5.0%)	<0.001
5 Year Overall Survival (Patients surviving 90 days)	71.8%	68.6%	75.4%	0.01

IQR = inter-quartile range.

Table 3: Results of bivariate and multivariable Cox proportional hazards model analysis of patient, treatment, and tumor factors associated with overall survival among 2,153 primary colonic lymphoma patients.

<i>Overall Survival</i>	<b>Bivariate</b>		<b>Multivariable</b>	
<i>Variable</i>	<i>HR (95% CI)</i>	<i>P</i>	<i>HR (95% CI)</i>	<i>P</i>
Surgery + Chemo	1.24 (1.05-1.47)	0.01	1.22 (1.02-1.45)	0.02
Age				
<40	REF		REF	
41-51	0.50 (0.27-0.92)	0.0281	0.40 (0.21-0.77)	0.005
51-60	0.51 (0.29-0.90)	0.0205	0.40 (0.22-0.73)	0.003
61-70	0.33 (0.19-0.57)	<.0001	0.27 (0.15-0.48)	<0.0001
70+	0.13 (0.08-0.23)	<.0001	0.12 (0.06-0.21)	<0.0001
R0 resection	0.95 (0.81-1.12)	0.60		
Female Gender	1.05 (0.89-1.25)	0.51		
Caucasian	0.78 (0.59-1.02)	0.07		
Charlson Score				
0	REF		REF	
1	0.63 (0.52-0.77)	<0.0001	0.72 (0.59-0.89)	0.002
2+	0.47 (0.36-0.61)	<0.0001	0.62 (0.47-0.81)	<0.0001

Facility				
Community	REF			
Comprehensive	1.34 (1.10-1.63)	0.002		
Academic	0.93 (0.74-1.18)	0.58		
Lymphoma Subtype				
Follicular/Marginal	REF		REF	
DLBCL	0.58 (0.45-0.74)	<0.0001	0.48 (0.37-0.61)	<0.0001
Burkitt	0.83 (0.55-1.26)	0.38	0.44 (0.29-0.68)	0.0002
Mantle Cell	0.55 (0.35-0.83)	0.005	0.45 (0.29-0.69)	0.0003
NHL NOS	0.51 (0.34-0.78)	0.001	0.47 (0.30-0.71)	0.0003
T-Cell	0.28 (0.17-0.47)	<0.0001	0.27 (0.16-0.44)	<0.0001
Other	0.45 (0.32-0.64)	<0.0001	0.45 (0.32-0.64)	<0.0001

HR: hazard ratio, DLBCL: diffuse large B-cell lymphoma, NHL: non-Hodgkin lymphoma, NOS: not otherwise specified.