

DR. ABHIJIT NAIK (Orcid ID : 0000-0003-1602-9425)

MR. ZIDONG ZHANG (Orcid ID : 0000-0002-1084-9732)

DR. DAVID AXELROD (Orcid ID : 0000-0001-5684-0613)

DR. KRISTA L LENTINE (Orcid ID : 0000-0002-9423-4849)

Article type : Brief Communication

**Title:** Impacts of Center and Clinical Factors in Antihypertensive Medication Use after Kidney Transplantation

**Running title:** Variation in Antihypertensive Medication Use after Kidney Transplant

**Authors:** Farrukh M Koraishy,<sup>1\*</sup> Hala Yamout,<sup>2\*</sup> Abhijit S Naik,<sup>3</sup> Zidong Zhang,<sup>4</sup> Mark A Schnitzler,<sup>4</sup> Rosemary Ouseph,<sup>4</sup> Ngan N Lam,<sup>5</sup> Vikas R. Dharnidharka,<sup>6</sup> David Axelrod,<sup>7</sup> Gregory P Hess,<sup>8</sup> Dorry L Segev,<sup>9</sup> Bertram L Kasiske,<sup>10</sup> Krista L Lentine,<sup>2,4</sup>

1 Division of Nephrology, Department of Medicine, Stony Brook University, Stony Brook, NY

2 Division of Nephrology, Department of Medicine, Saint Louis University, St. Louis, MO

3 Division of Nephrology, Department of Medicine, University of Michigan, Ann Arbor, MI, USA

4 Center for Abdominal Transplantation, Saint Louis University School of Medicine, St. Louis, MO, USA

5 Division of Nephrology, Department of Medicine, University of Calgary, Calgary, AB, Canada

6 Department of Pediatrics, Washington University, St. Louis, MO, USA

7 University of Iowa Transplant Institute, University of Iowa School of Medicine, Iowa City, IA, USA

8 College of Medicine, Drexel University, Philadelphia, PA, USA

This is the author manuscript accepted for publication and has undergone full peer review but has not been through the copyediting, typesetting, pagination and proofreading process, which may lead to differences between this version and the [Version of Record](#). Please cite this article as [doi: 10.1111/CTR.13803](https://doi.org/10.1111/CTR.13803)

This article is protected by copyright. All rights reserved

9 Center for Transplantation, Johns Hopkins School of Medicine, Baltimore, MD, USA

10 Department of Medicine, Hennepin County Medical Center, Minneapolis, MN, USA

\*Co-first authors, contributed equally

**Institution at which work was performed:** Saint Louis University, St. Louis, MO, USA

**Correspondence:** Krista L. Lentine, MD, PhD

Address: Saint Louis University Center for Abdominal Transplantation, 1402 S. Grand Blvd., St. Louis, MO, 63104. Phone: (314) 577-8765; Email: krista.lentine@health.slu.edu

**Author Roles:**

- KLL and MAS participated in study design, acquisition of data and regulatory approvals, data analysis, and writing of the paper.
- FMK, HY, ASN, MAS, RO, NNL, VRD, DA, GPH, DLS, and BLK participated in study design, interpretation, and writing of the paper as part of our outcomes consortium.
- ZZ Participated in data analysis and manuscript preparation.

**Article Category:** Brief Communication

**Disclosures:** The authors declare no conflicts of interest.

**Acknowledgments:** This work was conducted under the auspices of the Minneapolis Medical Research Foundation (MMRF), contractor for the Scientific Registry of Transplant Recipients (SRTR), as a deliverable under contract no. HSH250201000018C (U.S. Department of Health and Human Services, Health Resources and Services Administration, Healthcare Systems Bureau, Division of Transplantation). As a U.S. Government-sponsored work, there are no restrictions on its use. The interpretation and reporting of these data are the responsibility of the author(s) and in no way should be seen as an official policy of or interpretation by the SRTR or the U.S. Government. Supported in part by a grant from the National Institute of Diabetes and Digestive and Kidney Diseases (NIDDK), R01DK102981.

The authors thank SRTR colleague Nan Booth, MSW, MPH, ELS, for manuscript editing. An abstract describing portions of this work was presented at the American Transplant Congress 2018, Seattle, WA.

**Abbreviations:** ACEi, angiotensin-converting enzyme inhibitor; AHM, antihypertensive medication; ARB, angiotensin II receptor blocker; aOR, adjusted odds ratio; BB, beta blocker; CCB, calcium channel

This article is protected by copyright. All rights reserved

blocker; DHP CCB, dihydropyridine calcium channel blocker; EBE, empirical Bayes estimates; eGFR, estimated glomerular filtration rate; ESRD, end-stage renal disease; HRSA, Health Resources and Services Administration; KTx, kidney transplant; LCL, lower confidence limit; MOR, median odds ratio; NDHP CCB, non-dihydropyridine calcium channel blocker; OPTN, Organ Procurement and Transplantation Network; PCD, pharmaceutical claims data; SRTR, Scientific Registry of Transplant Recipients; UCL, upper confidence limit.

## **ABSTRACT**

Hypertension guidelines recommend calcium channel blockers (CCBs), thiazide diuretics, and angiotensin-converting enzyme inhibitors/angiotensin receptor blockers (ACEi/ARBs) as first-line agents to treat hypertension. Hypertension is common among kidney transplant (KTx) recipients, but data are limited regarding patterns of antihypertensive medication (AHM) use in this population. We examined a novel database that links national registry data for adult KTx recipients (age >18 years) with AHM fill records from a pharmaceutical claims warehouse (2007–2016) to describe use and correlates of AHM use during months 7-12 posttransplant. For patients filling AHMs, individual agents used included: dihydropyridine (DHP) CCBs, 55.6 %; beta blockers (BBs), 52.8%; diuretics, 30.0%; ACEi/ARBs, 21.1%; non-DHP CCBs, 3.0%; and others, 20.1%. Both BB and ACEi/ARB use was significantly lower in the time period following the 2014 Eighth Joint National Committee (JNC-8) guidelines (2014-2016), compared with an earlier period (2007-2013). The median odds ratios generated from case-factor-adjusted models supported variation in use of ACEi/ARBs (1.51) and BBs (1.55) across transplant centers. Contrary to hypertension guidelines for the general population, KTx recipients are prescribed relatively more BBs and fewer ACEi/ARBs. The clinical impact of this AHM prescribing pattern warrants further study.

**KEY WORDS:** Antihypertensive Medications, Kidney Transplant, Pharmacoepidemiology, Practice Patterns,

## INTRODUCTION

Hypertension is a highly prevalent (50%-80%) comorbid condition among kidney transplant (KTx) recipients.<sup>1,2</sup> Complications of uncontrolled hypertension after KTx include injury to the renal allograft, cardiovascular disease, and mortality.<sup>3</sup> Effective antihypertensive medications (AHMs) can control blood pressure and improve patient and graft survival.<sup>4</sup> Several studies have been conducted to determine the ideal blood pressure management strategy for KTx patients, primarily focused on use of angiotensin-converting enzyme inhibitors/angiotensin II receptor blockers (ACEi/ARBs) and calcium channel blockers (CCBs).<sup>5</sup> However, the optimal medical regimen in this population remains undefined. Factors to be considered in prescribing AHMs include comorbid conditions that are indications for particular agents,<sup>6</sup> or drug interactions with immunosuppressive therapy.<sup>7</sup>

In a cohort of 16,157 KTx recipients, we previously examined AHM use at the first transplant anniversary and found beta-blockers (BBs) to be the most commonly used, followed closely by CCBs.<sup>8</sup> This study was limited by an observation period (2005–2010) that preceded the 2014 Eighth Joint National Committee (JNC-8) hypertension guidelines,<sup>6</sup> and it did not consider the impact of transplant center variation practices. We recently identified center effect as a strong correlate of immunosuppressive regimen choice after transplant,<sup>9-11</sup> and hypothesized that such center-driven variations may also affect AHM regimens.

To advance understanding of AHM use in a large, national sample of KTx recipients, we integrated U.S. transplant registry data with national pharmacy fill records from a large pharmaceutical claims warehouse. Our primary goal was to describe current AHM prescription patterns in months 7-12 posttransplant. This observation period was chosen because kidney function has typically stabilized, as have immunosuppressive regimens. We examined the impact of patient characteristics and center effects on AHM choices after kidney transplant. In particular, we hypothesized that ACEi/ARB use may have increased, and BB use declined, after publication of JNC-8 hypertension guidelines, based on prioritization of agent use in these guidelines for the general population.

## METHODS

### Data sources and sample selection

Transplant registry data were obtained from the Scientific Registry of Transplant Recipients (SRTR), which includes data on all transplant recipients in the U.S., submitted by members of the Organ Procurement and Transplantation Network (OPTN). The Health Resources and Services Administration (HRSA) provides oversight of the activities of the OPTN and SRTR contractors. Pharmacy fill data were obtained from billing claims for KTx recipients from a large U.S. pharmaceutical claims data (PCD) warehouse that collects prescription drug fill records, including self-paid fills and fills reimbursed by private and public payers. The PCD comprised National Council for Prescription Drug Program 5.1-format prescription claims aggregated from multiple sources including data clearinghouses, retail pharmacies, and prescription benefit managers for approximately 60% of U.S. retail pharmacy transactions. Individual claim records included the dates of given pharmacy fills with National Drug Code identifying agents and dosage. After Institutional Review Board and HRSA approvals, PCD records were linked with SRTR records for kidney recipients.<sup>8</sup> Eligible patients had PCD data for months 7-12 posttransplant. We studied overall prescribing patterns for all eligible transplant recipients, and examined variation in use of specific agents among recipients receiving AHMs.

### AHM regimen and covariate ascertainment

AHM regimens were classified based on components in the medications filled: (1) ACEi/ARB; (2) DHP CCB; (3) non-DHP (NDHP) CCB; (4) BB; (5) diuretic; and (6) other AHM. Recipient characteristics (**Table 1**) and transplant centers were identified from the SRTR registry.

### Statistical Analyses

In the initial description of prescribing patterns, distributions of recipient, donor, and transplant characteristics according to regimen (not mutually exclusive) were described as percentages. To visually assess unadjusted variation in AHM use at the transplant center level across the U.S., observed proportions of patients receiving each regimen were determined and displayed as stacked bar plots.

Among patients receiving AHMs, we examined variation in use of BBs and ACEi/ARBs as two regimens of key interest given particular focus in JNC-8,<sup>6</sup> considering clinical factors and center. Bi-level hierarchical models were constructed to adjust for clustering effects, similar to previous methods.<sup>9,12-15</sup> Level 1 comprised patient/donor and transplant (case) factors and level 2 represented centers, wherein use of

each regimen (BB and ACEi/ARB) was compared with absence of use. Empirical Bayes estimates (EBEs) provided an adjusted proportion of use of a regimen of interest compared with the reference regimen, incorporating case-mix adjustment from the hierarchical model, where case-level associations were quantified as adjusted odds ratios ( $_{95\%LCL}$  aOR  $_{95\%UCL}$ ). A 95% confidence interval (CI) for a center's EBE of use of a regimen of interest not including the median national rate of use indicated a prescribing pattern statistically significantly different from the expected rate of use for that regimen.

Heterogeneity in AHM prescribing across centers was quantified using median odds ratios (MOR). The MOR gives the median of the odds that patients with identical characteristics will receive the AHM regimen of interest when two centers are drawn at random (performed for all possible pairs of centers). For example, a MOR of 2.0 means that if centers are selected at random across all centers, a patient with a given set of characteristics has, on an average, twice the odds of receiving the AHM regimen of interest (BB or ACEi/ARB) at one of the randomly selected centers than at the other.<sup>16</sup> The aORs of receiving an AHM regimen other than the reference was determined for patient and donor factors, after accounting for center effect using the hierarchical model. Data were analyzed using Stata/IC 12.0, StataCorp LP, College Station, TX.

## RESULTS

A total of 147,304 patients underwent kidney-alone transplant between July 2006 and December 2015 (age >18 years). Of these, 104,082 had pharmacy fill records for months 7-12 posttransplant; 57,185 (54.9%) used AHMs. Patients with and without captured AHM fills in the study period are compared in **Supplementary Table 1**. Those with AHM fills were more commonly older, male, and African American; more commonly had hypertension or diabetes as the cause of ESRD; more commonly had comorbid coronary artery, cerebral vascular and peripheral vascular diseases; and more commonly received deceased donor (vs living donor) transplants, had acute rejection in the first 6 months, had 6-month eGFR <60 ml/min per 1.73 m<sup>2</sup>, and received mTOR inhibitor-based maintenance immunosuppression. CCBs were the most commonly prescribed AHM (58.6%) among recipients who used AHMs; most received DHP CCBs (55.6%, vs. only 3.0% using NDHP CCBs) (**Table 1**), followed by BBs (52.8%), diuretics (30.0%), ACEi/ARBs (21.1%), and other agents (20.1%). Diuretic use was more common among recipients who were older, female, or obese, with lower estimated glomerular filtration rate (eGFR) and comorbid conditions such as diabetes mellitus, coronary artery disease, or peripheral vascular disease. CCB and ACEi/ARB use declined, while diuretic use increased, with lower 6-month eGFR.

We observed a modest variation in use of AHM class across various transplant centers, but overall CCBs and BBs remained the most commonly used (**Figure 1**). Controlling for demographic and clinical factors, ACEi/ARB use was less likely in recipients with lower eGFR (aOR  $_{0.58}0.64_{0.71}$ ), or of younger (<30 years) or older (age  $\geq 60$  years) age (aOR  $_{0.82}0.89_{0.98}$  and  $_{0.84}0.90_{0.96}$ ) or black race (aOR  $_{0.84}0.89_{0.94}$ ). ACEi/ARB use was more likely in recipients with end-stage renal disease (ESRD) caused by diabetes (aOR  $_{1.08}1.14_{1.21}$ ) or polycystic kidney disease (aOR  $_{1.04}1.13_{1.22}$ ), or with a history of coronary artery disease (aOR  $_{1.05}1.15_{1.25}$ ) at transplant registration. ACEi/ARB use was also lower in previous transplant recipients (aOR  $_{0.72}0.77_{0.82}$ ) but higher among those using mTOR inhibitor-based immunosuppression (aOR  $_{1.13}1.27_{1.42}$ ). Similarly, BB use was less likely in recipients aged younger than 30 or older than 60 years (aOR  $_{0.85}0.92_{0.99}$  and  $_{0.89}0.94_{0.99}$ ). Regimens containing both ACEi/ARBs (aOR  $_{0.50}0.53_{0.56}$ ) and BBs (aOR  $_{0.79}0.82_{0.86}$ ) were filled less commonly in the more recent study period of 2014-2016, compared with 2007-2013 (**Table 2**).

In the unadjusted model addressing center effects alone, the MOR for BB fills was 1.55; adding case factors made no difference (**Table 3**), suggesting that differences in case factors did not explain variation in BB fills among transplant centers. Similarly, variation in ACEi/ARB use was not explained by differences in case factors, as the MOR (1.50) did not change when case factors were added. Twenty-five percent of transplant centers were above and 19% were below the reference range for BB use; 18% were above and 13% below the reference range for ACEi/ARB use (**Table 3, Figure 2**).

## DISCUSSION

In this study of linked national U.S. transplant registry and pharmacy claims data, we examined practice patterns in AHM prescription across transplant centers. We observed that in KTx recipients 7-12 months posttransplant, CCBs were the most commonly used AHM, followed by BBs, while ACEi/ARB use remained relatively low. In addition, we observed that the odds of BB and ACEi/ARB use declined in 2014-2016 (post JNC-8) compared with 2007-2013. Finally, while we observed some clinical associations, most variation in AHM use patterns was driven by transplant center.

Despite increased cardiovascular risk after KTx compared with the general population, the optimal AHM regimen is not well defined.<sup>7,17</sup> Based on the JNC-8 guidelines, ACEi/ARBs, thiazide diuretics, and CCBs are the first-line agents for management of primary hypertension in the general population, but specific indications for use of each of these medications are based on comorbid illnesses. For example, ACEi/ARBs are recommendation as first line AHM for all patients with chronic kidney disease, and BBs for those with a history of coronary artery disease. In this analysis, we specifically focused on ACEi/ARB and BB use in KTx recipients. The rationale for this interest was low use of ACEi/ARBs despite the 2014

JNC-8 guidelines recommendation for use as first-line agents, and high frequency of BB use (secondly only to CCBs) despite their being accorded a lower tier (second- or third-line) status.<sup>6</sup>

We observed a 48% reduction in ACEi/ARB use in the post-JNC-8 era compared with the earlier time period. This pattern contrasts with JNC-8 recommendations for the general population and with the observation that ACEi/ARB use has increased in the general population.<sup>18</sup> The difference may relate to specific considerations or concerns in KTx recipients. In a systemic review of 21 trials (1549 KTx recipients), ACEi/ARB treatment was noted to significantly reduce proteinuria and GFR posttransplant, but data were insufficient to determine effects on hard outcomes such as patient or graft survival.<sup>19</sup> In a recent multi-center clinical trial of 213 KTx recipients with proteinuria, ACEi therapy was not associated with improved renal outcomes or patient survival, suggesting that findings from the non-transplant population may not extrapolate to the transplant population.<sup>20</sup> Another randomized control trial by Ibrahim *et al* comparing losartan versus placebo found no difference in their primary outcome (composite of doubling of the fraction of renal cortical volume occupied by interstitium and ESRD from interstitial fibrosis [IF]/tubular atrophy [TA]).<sup>21</sup> Notably, in a recent study by Cockfield *et al*, renin-angiotensin-aldosterone system (RAAS) blockade was associated with lower risk of T-cell-mediated rejection even when combined with low-dose tacrolimus. In addition, the combination led to lower 24-month IF/TA compared with other regimens.<sup>22</sup> Further, this study did not identify reduced GFR to be a problem despite very early RAAS blockade initiation. Interestingly, we observed lower ACEi/ARB use in African Americans, a group shown to have lower rates of GFR decline with ACEi/ARBs compared with other AHMs in hypertension-associated mild-to-moderate CKD.<sup>23</sup> In addition to inconclusive data supporting benefits in the KTx population, the relatively lower use of ACEi/ARB in KTx recipients compared to the general population may also reflect concern for side effects and drug interactions that might be more problematic after a recent KTx, such as a decline in GFR or hyperkalemia that can be exacerbated in patients receiving calcineurin inhibitors.

We also noted an 18% reduction in BB use among KTx recipients after JNC-8. This is consistent with overall trends and data, and resonates with clinical trial meta-analysis in the non-transplant population, showing BBs to be inferior to CCBs, ACEi/ARBs and diuretics regarding cardiovascular and survival outcomes.<sup>24,25</sup> Despite BBs being recommended for patients with coronary artery disease, we did not note increased use among these patients.

As in the general population, CCB use appears to have increased in recent years.<sup>18</sup> A study directly comparing ACEi to CCB use in KTx recipients showed similar safety and efficacy; however, CCBs were associated with improved GFR 2 years posttransplant. Whether this represents an actual improvement



versus the vasodilatory properties of CCBs remains to be determined.<sup>26</sup> Common use of CCB in the KTx population may also reflect efficacy in reducing blood pressure without side effects such as serum creatinine elevation or hyperkalemia, concerns that may pose barriers to ACEi/ARB use after KTx, as discussed above. For this analysis, we categorized both classes of CCBs together, partly because NDHP CCB use was very low. Low NDHP CCB use in this population is likely related to the known interactions with calcineurin inhibitors. Lastly, we noted that while some case-level factors were associated with AHM use, the variation in use was almost entirely driven by prescribing practices of transplant centers. This finding is consistent with our previous studies highlighting and quantifying center-level variation in immunosuppressive agents.<sup>9-11</sup> Future studies are needed to specifically assess whether centers with the best short- and long-term graft and patient outcomes employ certain practices and treatment patterns that drive those outcomes.

Our study has strengths. We identified a large, national sample of KTx recipients across U.S. transplant centers to describe current trends and associations of AHM use, considering center and clinical factors. We compared differences in prescribing patterns before and after a major JNC guideline revision. Our study also has limitations, such as lack of indication for a given prescription and lack of data on some granular clinical factors such as blood pressure control or the presence of proteinuria. As with any observational study, we can describe associations but cannot prove causation. Notably, our capture of AHM use among 55% of the study sample is lower than some prior studies,<sup>23</sup> which may reflect use of different pharmacies by kidney transplant patients (e.g. immunosuppression fills at a captured specialty pharmacy but AHM fill at a pharmacy not captured in the PCD), or dispersal of inexpensive generic AHM without cost or record in the pharmacy claims warehouse. However, the pattern of characteristics of patients with versus without captured AHM fills are consistent with clinical expectations. While our data allow identification of a large national cohort, not all KTx recipients are represented, and prescribing may differ for recipients using other pharmacies.

In conclusion, we found that CCBs and BBs were the most commonly used AHMs in months 7-12 after KTx. ACEi/ARB use was noted to be lower, and BB use higher, in KTx recipients than is recommended for the general population. While there were some case-level correlates of BB and ACEi/ARB use, prescribing varied across transplant centers after adjusting for case factors. Continued study is needed to provide evidence to inform AHM choice to optimize outcomes for KTx recipients.<sup>27</sup>

## REFERENCES

1. Saran R, Li Y, Robinson B, et al. US Renal Data System 2015 Annual Data Report: Epidemiology of Kidney Disease in the United States. *American journal of kidney diseases : the official journal of the National Kidney Foundation* 2016;67:Suppl 1, S1-305.
2. Weir MR, Burgess ED, Cooper JE, et al. Assessment and management of hypertension in transplant patients. *J Am Soc Nephrol* 2015;26:1248-60.
3. Mange KC, Cizman B, Joffe M, Feldman HI. Arterial hypertension and renal allograft survival. *Jama* 2000;283:633-8.
4. Opelz G, Dohler B, Collaborative Transplant S. Improved long-term outcomes after renal transplantation associated with blood pressure control. *American journal of transplantation : official journal of the American Society of Transplantation and the American Society of Transplant Surgeons* 2005;5:2725-31.
5. Cross NB, Webster AC, Masson P, O'Connell PJ, Craig JC. Antihypertensive treatment for kidney transplant recipients. *The Cochrane database of systematic reviews* 2009:CD003598.
6. James PA, Oparil S, Carter BL, et al. 2014 evidence-based guideline for the management of high blood pressure in adults: report from the panel members appointed to the Eighth Joint National Committee (JNC 8). *Jama* 2014;311:507-20.
7. Dunn BL, Teusink AC, Taber DJ, Hemstreet BA, Uber LA, Weimert NA. Management of hypertension in renal transplant patients: a comprehensive review of nonpharmacologic and pharmacologic treatment strategies. *The Annals of pharmacotherapy* 2010;44:1259-70.
8. Lentine KL, Anyaegbu E, Gleisner A, et al. Understanding medical care of transplant recipients through integrated registry and pharmacy claims data. *American journal of nephrology* 2013;38:420-9.
9. Axelrod DA, Naik AS, Schnitzler MA, et al. National Variation in Use of Immunosuppression for Kidney Transplantation: A Call for Evidence-Based Regimen Selection. *American journal of transplantation : official journal of the American Society of Transplantation and the American Society of Transplant Surgeons* 2016;16:2453-62.
10. Dharnidharka VR, Naik AS, Axelrod DA, et al. Center practice drives variation in choice of US kidney transplant induction therapy: a retrospective analysis of contemporary practice. *Transpl Int* 2018;31:198-211.
11. Nazzari M, Lentine KL, Naik AS, et al. Center-driven and Clinically Driven Variation in US Liver Transplant Maintenance Immunosuppression Therapy: A National Practice Patterns Analysis. *Transplant Direct* 2018;4:e364.

12. King EA, Kucirka LM, McAdams-DeMarco MA, et al. Early Hospital Readmission After Simultaneous Pancreas-Kidney Transplantation: Patient and Center-Level Factors. *American journal of transplantation : official journal of the American Society of Transplantation and the American Society of Transplant Surgeons* 2016;16:541-9.
13. Orandi BJ, James NT, Hall EC, et al. Center-level variation in the development of delayed graft function after deceased donor kidney transplantation. *Transplantation* 2015;99:997-1002.
14. Henderson ML, Thomas AG, Shaffer A, et al. The National Landscape of Living Kidney Donor Follow-Up in the United States. *American journal of transplantation : official journal of the American Society of Transplantation and the American Society of Transplant Surgeons* 2017.
15. Lentine KL, Naik AS, Schnitzler MA, et al. Variation in Use of Procurement Biopsies and Its Implications for Discard of Deceased Donor Kidneys Recovered for Transplant. *American journal of transplantation : official journal of the American Society of Transplantation and the American Society of Transplant Surgeons* 2019.
16. Merlo J, Chaix B, Ohlsson H, et al. A brief conceptual tutorial of multilevel analysis in social epidemiology: using measures of clustering in multilevel logistic regression to investigate contextual phenomena. *Journal of epidemiology and community health* 2006;60:290-7.
17. Chatzikyrkou C, Menne J, Gwinner W, et al. Pathogenesis and management of hypertension after kidney transplantation. *Journal of hypertension* 2011;29:2283-94.
18. Jarari N, Rao N, Peela JR, et al. A review on prescribing patterns of antihypertensive drugs. *Clinical hypertension* 2015;22:7.
19. Hiremath S, Fergusson D, Doucette S, Mulay AV, Knoll GA. Renin angiotensin system blockade in kidney transplantation: a systematic review of the evidence. *American journal of transplantation : official journal of the American Society of Transplantation and the American Society of Transplant Surgeons* 2007;7:2350-60.
20. Knoll GA, Fergusson D, Chasse M, et al. Ramipril versus placebo in kidney transplant patients with proteinuria: a multicentre, double-blind, randomised controlled trial. *Lancet Diabetes Endocrinol* 2016;4:318-26.
21. Ibrahim HN, Jackson S, Connaire J, et al. Angiotensin II blockade in kidney transplant recipients. *J Am Soc Nephrol* 2013;24:320-7.
22. Cockfield SM, Wilson S, Campbell PM, et al. Comparison of the effects of standard vs low-dose prolonged-release tacrolimus with or without ACEi/ARB on the histology and function of renal allografts.

American journal of transplantation : official journal of the American Society of Transplantation and the American Society of Transplant Surgeons 2019;19:1730-44.

23. Wright Jr JT, Bakris G, Greene T, et al. Effect of blood pressure lowering and antihypertensive drug class on progression of hypertensive kidney disease: results from the AASK trial. *Jama* 2002;288:2421-31.
24. Wiysonge CS, Bradley HA, Volmink J, Mayosi BM, Mbewu A, Opie LH. Beta-blockers for hypertension. *The Cochrane database of systematic reviews* 2012:CD002003.
25. Wiysonge CS, Bradley HA, Volmink J, Mayosi BM, Opie LH. Beta-blockers for hypertension. *The Cochrane database of systematic reviews* 2017;1:CD002003.
26. Midtvedt K, Hartmann A, Foss A, et al. Sustained improvement of renal graft function for two years in hypertensive renal transplant recipients treated with nifedipine as compared to lisinopril. *Transplantation* 2001;72:1787-92.
27. Halimi JM, Persu A, Sarafidis PA, et al. Optimizing hypertension management in renal transplantation: a call to action. *Nephrol Dial Transplant* 2017;32:1959-62.

#### FIGURE LEGENDS

**Figure 1.** Variation of AHM regimen class prescribed in months 7 to 12 posttransplant, across U.S. transplant centers. ACEi, angiotensin converting enzyme inhibitor. AHM, antihypertensive medication. ARB, angiotensin II receptor blocker. BB, beta blocker. CCB, calcium channel blocker. DHP, dihydropyridine. NDHP, non-dihydropyridine.

**Figure 2.** Center-level variation in use of BB and ACEi/ARB in months 7 to 12 after KTx. ACEi, angiotensin converting enzyme inhibitor. AHM, antihypertensive medication. ARB, angiotensin II receptor blocker. BB, beta blocker. MOR, median odds ratio.

**Table 1.** Characteristics of kidney transplant recipients according to antihypertensive medication use in months 7-12 after transplant

|                                    | DHP CCB<br>(N=31,814)<br>% | NDHP<br>CCB<br>(N=1,699)<br>% | ACEi/ARB<br>(N=12,082)<br>% | BB<br>(N=30,196)<br>% | Diuretics<br>(N=17,126)<br>% | Other<br>AHM<br>(N=11,479)<br>% |
|------------------------------------|----------------------------|-------------------------------|-----------------------------|-----------------------|------------------------------|---------------------------------|
| <b>Recipient factors</b>           |                            |                               |                             |                       |                              |                                 |
| Age, years                         |                            |                               |                             |                       |                              |                                 |
| 19 to 30                           | 7.6                        | 8.6                           | 7.1                         | 7.2                   | 3.8                          | 7.5                             |
| 31 to 44                           | 19.8                       | 22.5                          | 20.8                        | 20.6                  | 15.2                         | 20.6                            |
| 45 to 59                           | 39.6                       | 38.0                          | 41.3                        | 39.5                  | 38.9                         | 39.9                            |
| ≥60                                | 33.0                       | 31.0                          | 30.9                        | 32.7                  | 42.1                         | 32.0                            |
| Female                             | 33.9                       | 34.4                          | 33.4                        | 36.6                  | 41.0                         | 28.7                            |
| Race                               |                            |                               |                             |                       |                              |                                 |
| White                              | 45.8                       | 45.4                          | 51.5                        | 50.8                  | 52.7                         | 41.6                            |
| African American                   | 32.7                       | 34.6                          | 28.1                        | 29.7                  | 30.9                         | 38.2                            |
| Hispanic                           | 14.9                       | 15.2                          | 14.3                        | 13.4                  | 11.9                         | 14.1                            |
| Other                              | 6.6                        | 4.8                           | 6.2                         | 6.2                   | 4.5                          | 6.1                             |
| Body mass index, kg/m <sup>2</sup> |                            |                               |                             |                       |                              |                                 |
| <18.5                              | 1.4                        | 1.9                           | 1.6                         | 1.6                   | 1.1                          | 1.6                             |
| 18.5 to 24.9                       | 26.4                       | 28.7                          | 25.7                        | 26.8                  | 18.5                         | 27.3                            |
| 25 to 30                           | 34.1                       | 33.2                          | 34.0                        | 33.2                  | 30.3                         | 33.6                            |
| >30                                | 36.3                       | 34.7                          | 36.4                        | 36.5                  | 48.0                         | 35.2                            |
| Unknown                            | 1.8                        | 1.6                           | 2.3                         | 2.0                   | 2.1                          | 2.4                             |
| Cause of ESRD                      |                            |                               |                             |                       |                              |                                 |
| Diabetes                           | 27.5                       | 22.8                          | 28.1                        | 26.2                  | 33.9                         | 28.9                            |
| Glomerulonephritis                 | 21.1                       | 22.6                          | 22.9                        | 22.3                  | 17.5                         | 18.9                            |
| Hypertension                       | 31.0                       | 29.1                          | 27.6                        | 29.4                  | 27.5                         | 35.8                            |
| Polycystic kidney disease          | 8.3                        | 9.7                           | 10.3                        | 8.6                   | 9.0                          | 6.3                             |
| Other                              | 12.2                       | 15.8                          | 11.3                        | 13.5                  | 12.2                         | 10.2                            |
| Comorbidity                        |                            |                               |                             |                       |                              |                                 |
| Coronary artery disease            | 6.1                        | 6.1                           | 7.0                         | 6.6                   | 8.6                          | 6.9                             |
| Cerebral vascular disease          | 2.7                        | 2.0                           | 2.5                         | 2.7                   | 2.9                          | 2.8                             |
| Peripheral vascular disease        | 6.9                        | 5.9                           | 5.6                         | 6.5                   | 9.0                          | 7.2                             |
| COPD                               | 1.4                        | 1.4                           | 1.3                         | 1.3                   | 1.9                          | 1.4                             |
| eGFR at 6 months, ml/min           |                            |                               |                             |                       |                              |                                 |
| ≥60                                | 44.2                       | 40.8                          | 45.0                        | 42.0                  | 32.2                         | 39.3                            |
| 30 to 59                           | 48.0                       | 50.7                          | 48.4                        | 49.8                  | 54.9                         | 50.3                            |
| <30                                | 5.9                        | 7.0                           | 4.0                         | 6.1                   | 11.2                         | 7.6                             |
| Missing                            | 1.9                        | 1.6                           | 2.5                         | 2.1                   | 1.8                          | 2.9                             |

**Table 1, continued.** Characteristics of kidney transplant recipients according to antihypertensive medication use in months 7-12 after transplant.

| <b>Donor and transplant factors</b>  |      |      |      |      |      |      |
|--|------|------|------|------|------|------|
| Previous transplant  | 11.4 | 15.5 | 10.7 | 13.6 | 13.6 | 12.8 |
| Acute rejection at 6 months  | 6.3  | 6.6  | 5.5  | 6.5  | 7.6  | 7.0  |
| Maintenance regimen at 6 months  |      |      |      |      |      |      |
| mTOR inhibitor-based   | 4.0  | 4.5  | 5.1  | 4.5  | 7.0  | 6.1  |
| Cyclosporine-based   | 1.3  | 2.9  | 1.6  | 1.3  | 1.9  | 1.6  |
| Tac+MMF/MPA+Pred   | 37.0 | 36.6 | 38.7 | 37.6 | 35.5 | 36.8 |
| Tac+MMF/MPA  | 13.9 | 13.4 | 15.5 | 13.8 | 13.0 | 12.1 |
| Tac, Tac+Pred  | 8.7  | 7.1  | 7.4  | 8.7  | 8.5  | 8.6  |
| Other  | 35.1 | 35.5 | 31.7 | 34.1 | 34.3 | 34.7 |
| Donor type   |      |      |      |      |      |      |
| Living donor   | 31.4 | 35.9 | 36.2 | 33.5 | 26.6 | 27.2 |
| Standard criteria deceased   | 44.9 | 42.3 | 44.0 | 44.0 | 46.4 | 47.8 |
| Expanded criteria deceased   | 12.5 | 10.1 | 10.3 | 11.5 | 15.0 | 13.3 |
| Donation after cardiac death   | 11.3 | 11.7 | 9.4  | 11.0 | 12.1 | 11.7 |
| Year of treatment  |      |      |      |      |      |      |
| 2007-2013  | 66.3 | 74.2 | 78.8 | 70.5 | 70.8 | 73.2 |
| 2014-2016  | 33.7 | 25.8 | 21.2 | 29.5 | 29.2 | 26.8 |
| Column percentages reflect proportions of patients who received a given AHM who have the indicated clinical traits.  |      |      |      |      |      |      |
| <b>ABBREVIATIONS:</b> ACEi/ARB, angiotensin-converting-enzyme inhibitor/angiotensin II receptor blocker; COPD, chronic obstructive pulmonary disease; DHP CCB, dihydropyridine calcium channel blocker; NDHP CCB, non-dihydropyridine calcium channel blocker; eGFR, estimated glomerular filtration rate; ESRD, end-stage renal |      |      |      |      |      |      |

**Table 2.** Associations of BB and ACEi/ARB use with recipient, donor, and transplant characteristics, from multi-level modeling including transplant center.

|  | BB<br>aOR<br>(95% CIs) | ACEi/ARB<br>aOR<br>(95% CIs) |
|--|------------------------|------------------------------|
| <b>Recipient factors</b>                         |                        |                              |
| Age, years                                       |                        |                              |
| 19 to 30   | 0.92 (0.85–0.99)*      | 0.89 (0.82–0.98)*            |
| 31 to 44   | Reference              | Reference                    |
| 45 to 59   | 0.98 (0.93–1.03)       | 1.01 (0.96–1.07)             |
| ≥60  | 0.94 (0.89–0.99)*      | 0.90 (0.84–0.96)*            |
| Female   | 1.01 (0.97–1.04)       | 1.01 (0.97–1.05)             |
| Race   |                        |                              |
| White  | Reference              | Reference                    |
| African American                                 | 0.99 (0.94–1.03)       | 0.89 (0.84–0.94)‡            |
| Hispanic   | 0.96 (0.91–1.02)       | 0.99 (0.93–1.06)             |
| Other  | 0.99 (0.92–1.07)       | 0.98 (0.90–1.08)             |
| Body mass index, kg/m <sup>2</sup>               |                        |                              |
| <18.5  | 0.89 (0.78–1.02)       | 0.99 (0.84–1.17)             |
| 18.5 to 24.9                                     | Reference              | Reference                    |
| 25 to 30   | 0.97 (0.92–1.01)       | 1.05 (0.99–1.11)*            |
| >30  | 0.96 (0.92–1.01)       | 1.01 (0.95–1.06)             |
| Unknown  | 1.18 (1.03–1.35)*      | 1.25 (1.07–1.46)*            |
| Cause of ESRD                                    |                        |                              |
| Diabetes   | 0.91 (0.87–0.96)‡      | 1.14 (1.08–1.21)‡            |
| Glomerulonephritis                               | 0.94 (0.90–0.99)*      | 1.08 (1.01–1.15)*            |
| Hypertension                                     | Reference              | Reference                    |
| Polycystic Kidney Disease                        | 0.79 (0.74–0.85)‡      | 1.13 (1.04–1.22)*            |
| Other  | 0.89 (0.84–0.94)‡      | 0.84 (0.78–0.91)‡            |
| Comorbidity                                      |                        |                              |
| Coronary artery disease                          | 1.05 (0.98–1.13)       | 1.15 (1.05–1.25)*            |
| Cerebral vascular disease                        | 1.06 (0.95–1.18)       | 0.99 (0.87–1.13)             |
| Peripheral vascular disease                      | 1.01 (0.94–1.08)       | 0.87 (0.79–0.96)*            |
| COPD   | 0.91 (0.78–1.05)       | 1.06 (0.88–1.27)             |
| eGFR at 6 months, ml/min per 1.73 m <sup>2</sup> |                        |                              |
| ≥60  | 0.95 (0.91–0.98)*      | 1.11 (1.06–1.16)‡            |
| 30 to 59   | Reference              | Reference                    |
| <30  | 0.97 (0.90–1.05)       | 0.64 (0.58–0.71)‡            |
| Missing  | 1.14 (1.01–1.30)       | 1.44 (1.25–1.67)‡            |
| <b>Donor and transplant factors</b>              |                        |                              |
| Previous transplant                              | 1.10 (1.05–1.16)‡      | 0.77 (0.72–0.82)‡            |
| Acute rejection by 6 months                      | 1.05 (0.98–1.13)       | 0.92 (0.84–1.01)             |

**Table 2, continued.** Associations of BB and ACEi/ARB use with recipient, donor and transplant characteristics, from multi-level modeling including transplant center.

|   |                               |                               |
|---|-------------------------------|-------------------------------|
| Maintenance regimen at 6 months   |                               |                               |
| mTOR inhibitor-based  | 0.95 (0.86–1.04)              | 1.27 (1.13–1.42) <sup>†</sup> |
| Cyclosporine-based  | 0.89 (0.76–1.03)              | 1.19 (0.99–1.42)              |
| Tac+MMF/MPA+Pred  | Reference                     | Reference                     |
| Tac+MMF/MPA   | 0.99 (0.93–1.05)              | 1.02 (0.95–1.10)              |
| Tac, Tac+Pred   | 0.98 (0.91–1.05)              | 0.89 (0.81–0.97)              |
| Other   | 0.99 (0.94–1.04)              | 1.03 (0.97–1.10)              |
| Donor type  |                               |                               |
| Living donor  | 0.97 (0.93–1.01)              | 1.06 (1.01–1.11)              |
| Standard criteria deceased  | Reference                     | Reference                     |
| Expanded criteria deceased  | 1.08 (1.02–1.14) <sup>*</sup> | 0.98 (0.91–1.05)              |
| Donation after cardiac death  | 1.02 (0.96–1.08)              | 0.89 (0.83–0.96) <sup>*</sup> |
| Year of treatment   |                               |                               |
| 2007–2013   | Reference                     | Reference                     |
| 2014–2016   | 0.82 (0.79–0.86) <sup>‡</sup> | 0.53 (0.50–0.56) <sup>‡</sup> |
| P-value vs reference: <sup>*</sup> P <0.05-0.002; <sup>†</sup> P=0.001-0.0002; <sup>‡</sup> P <0.0001.  |                               |                               |
| <b>ABBREVIATIONS:</b> ACEi/ARB, angiotensin-converting enzyme inhibitor/angiotensin II receptor blocker; CI, confidence interval; COPD, chronic obstructive pulmonary disease; DHP CCB, dihydropyridine calcium channel blocker; NDHP CCB, non-dihydropyridine calcium channel blocker; eGFR, estimated glomerular filtration rate; ESRD, end-stage |                               |                               |



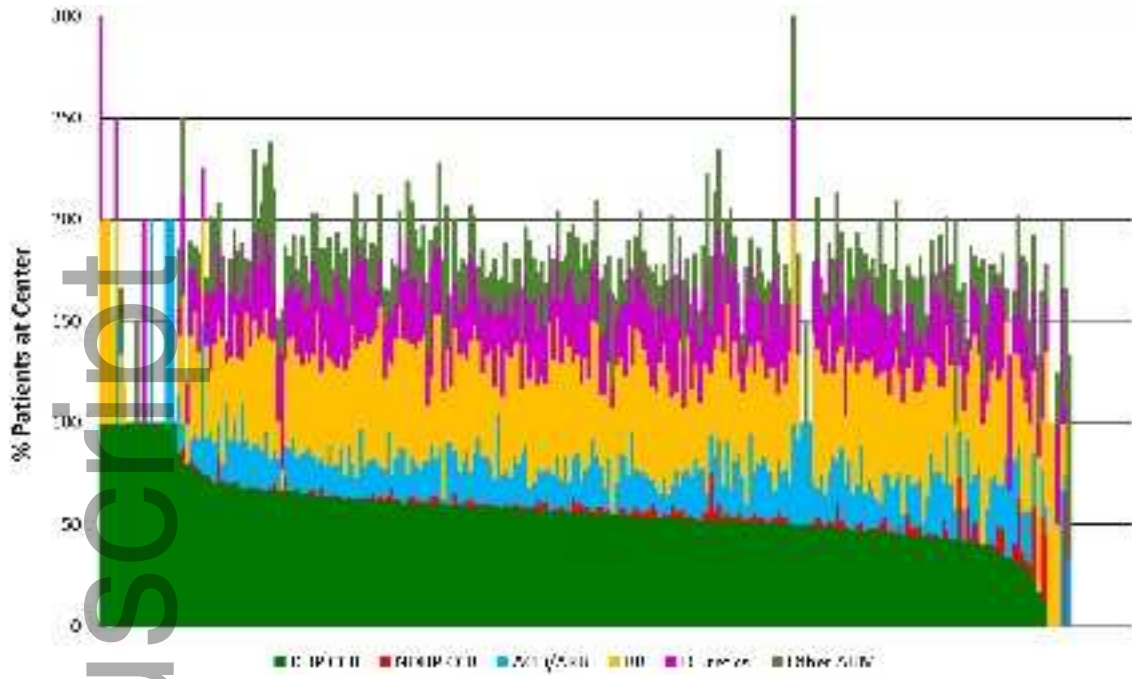
**Table 3.**

**A.** Heterogeneity in BB and ACEi/ARB use, from hierarchical logistic regression models adjusting for case-level characteristics.

| <b>Model</b>   | <b>MOR (unadjusted)</b> | <b>MOR (adjusted)</b> |
|--|-------------------------|-----------------------|
| BB. (vs No BB)   | 1.55                    | 1.55                  |
| ACEi/ARB (vs no ACEi/ARB)  | 1.50                    | 1.50                  |
| <b>ABBREVIATIONS:</b> ACEi/ARB, angiotensin-converting enzyme inhibitor/angiotensin II receptor blocker; BB, beta blocker; MOR, median odds ratio. |                         |                       |

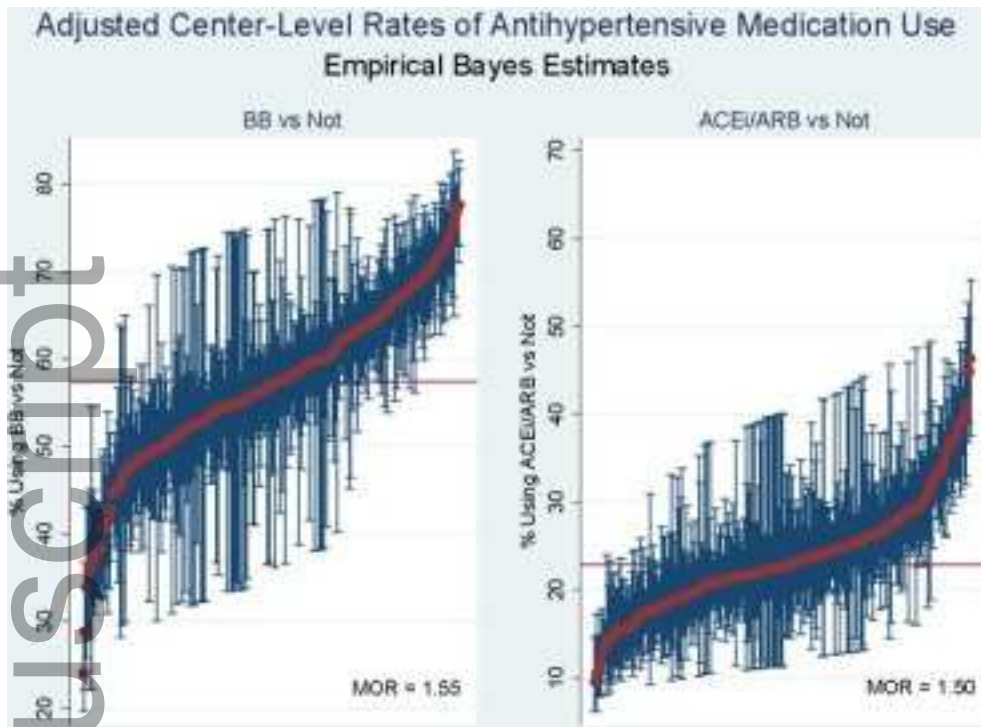
**B.** Empirical Bayes estimates for BB and ACEi/ARB use adjusting for case-level characteristics.

| <b>Model</b>   | <b>No. of centers in pairwise comparison</b> | <b>No. of centers significantly above reference probability</b> | <b>No. of centers significantly below reference probability</b> |
|--|--|---|---|
| BB (vs No BB)  | 247  | 62 (25%)  | 47 (19%)  |
| ACEi/ARB (vs no ACEi/ARB)  | 247  | 44 (18%)  | 33 (13%)  |
| <b>ABBREVIATIONS:</b> ACEi/ARB, angiotensin-converting enzyme inhibitor/angiotensin II receptor blocker; BB, beta blocker; MOR, median odds ratio. |  |   |   |



ctr\_13803\_f1.jpg

Author Manuscript



ctr\_13803\_f2.jpg