

## Isotopic niche partitioning in two sympatric howler monkey species

Elizabeth Flores-Escobar<sup>1,2</sup>, Carolina Sanpera<sup>1</sup>, Lluís Jover<sup>1†</sup>, Liliana Cortés-Ortiz<sup>3</sup>, Ariadna Rangel-Negrín<sup>2</sup>, Domingo Canales-Espinosa<sup>2</sup>, Pedro Américo D. Dias<sup>2,\*</sup>

<sup>1</sup> Departament de Biologia Evolutiva, Ecologia i Ciències Ambientals, Institut de Recerca de la Biodiversitat (IRBio), Universitat de Barcelona, Spain

<sup>2</sup> Primate Behavioral Ecology Lab, Instituto de Neuroetología, Universidad Veracruzana, Xalapa, México

<sup>3</sup> Department of Ecology and Evolutionary Biology, University of Michigan, Ann Arbor, USA

\* Corresponding author: [paddias@hotmail.com](mailto:paddias@hotmail.com)

**Number of words (abstract to discussion):** 3,809

**Number of text pages:** 14

**Number of tables:** 1

**Number of figures:** 5

**Abbreviated title:** Isotopic niche in howler monkeys

This is the author manuscript accepted for publication and has undergone full peer review but has not been through the copyediting, typesetting, pagination and proofreading process, which may lead to differences between this version and the [Version of Record](#). Please cite this article as doi: [10.1002/ajpa.24028](https://doi.org/10.1002/ajpa.24028)

**Grant sponsorship:** Universidad Veracruzana, Comisión Federal de Electricidad (RGCP-TP-UV-001/04), National Science Foundation (DEB-0640519, BCS-0962807, BCS-1517701), Consejo Nacional de Ciencia y Tecnología (grants 218078 and 396184).

## **Abstract**

**Objectives:** Ecological similarity between species can lead to interspecific trophic competition. However, when ecologically similar species coexist, they may differ in foraging strategies and habitat use, which can lead to niche partitioning. As the body tissues of consumers contain a stable isotope signature that reflects the isotopic composition of their diet, stable isotope analysis is a useful tool to study feeding behavior. We measured the isotopic niche width, which is a proxy for trophic niche width, of mantled (*Alouatta palliata*) and black (*A. pigra*) howler monkeys. Specifically, studied populations in allopatry and sympatry to assess whether these species showed niche partitioning.

**Materials and Methods:** Between 2008 and 2012, we collected hair samples from 200 subjects (113 black and 87 mantled howler monkeys) and used continuous flow isotope ratio mass spectrometry to estimate  $\delta^{13}\text{C}$  and  $\delta^{15}\text{N}$ . We described the isotopic niche width of each species in allopatry and sympatry with the Bayesian estimation of the standard ellipse areas.

**Results:** In allopatry, isotopic niche width and isotopic variation were similar in both species. In sympatry, black howler monkeys had a significantly broader isotopic niche, which was mainly determined by high  $\delta^{15}\text{N}$  values, and included the majority of mantled howler monkeys'

isotopic niche. The isotopic niche of mantled howler monkeys did not differ between sympatry and allopatry.

**Conclusions:** The coexistence of these ecologically similar species may be linked to trophic niche adjustments by one species, although the particular features of such adjustments (e.g., dietary, spatial, or sensory partitioning) remain to be addressed.

**KEYWORDS:** *Alouatta*, coexistence, standard ellipse area, stable isotope analysis, sympatry, trophic niche

## 1 | INTRODUCTION

The interaction among individuals of different species in a community can lead to competition for limited resources (Pianka, 1981). In general, the more ecologically similar two species are, the more likely it is that competition between them will be intense, although the intensity of competition will vary according to the species involved, the size of the interacting populations, inter-individual niche variation, and resource abundance (Araújo, Bolnick, & Layman, 2011; Dammhahn & Kappeler 2014; Davies, Meiri, Barraclough, & Gittleman, 2007). Intense interspecific competition may lead to the exclusion of one species (Wisheu, 1998). Still, it is common to find ecologically similar species living together in the same community (Dayan &

Simberloff, 2005), indicating that there are strategies that allow for coexistence (Chase & Leibold, 2003).

Resource partitioning minimizes interspecific competition and allows for species coexistence (Schoener, 1974). Resource partitioning is usually based on segregation at one or several dimensions of species niche (n-hypervolume *sensu* Hutchinson, 1957), including temporal, spatial, and trophic dimensions. Given the direct influence of food intake on fitness parameters (e.g., Grant & Grant, 2002), it may be expected that strategies allowing for trophic niche (i.e., the way in which animals feed and use their habitat: Pianka, 1974) segregation are under strong selective pressure, and therefore, their study may contribute critical information for understanding species coexistence. Sympatric species may segregate their trophic niches by foraging on different food items or by foraging at diverse locations or times (López-Bao, Mattisson, Persson, Aronsson, & Andrén, 2016; Steinmetz, Garshelis, Chutipong, & Seuaturien, 2011; Vanak et al., 2013; Vernes, 2003). Nevertheless, trophic segregation will be conditional on resource availability, such that high seasonality in food abundance or human-induced scarcity may lead to increased trophic niche overlap (Kuhnen et al., 2017).

The body tissues of consumers contain a stable isotope signature that reflects the isotopic composition of their diet (Hobson 1999; Hobson & Clark 1992). Thus, dietary variation should lead to predictable isotopic patterns, which may be assessed with stable isotope analysis (SIA) to investigate the trophic ecology of free-ranging individuals (Crawford, McDonald, &

Bearhop, 2008; Newsome, Martínez del Rio, Bearhop, & Phillips, 2007). The bidimensional representation of stable carbon isotope ratio ( $\delta^{13}\text{C}$ ) vs. stable nitrogen ratio ( $\delta^{15}\text{N}$ ), provides a measure of the isotopic niche (Newsome et al., 2007), and offers quantitative insights into two of the main features of trophic niches: niche width (i.e., habitat use, for instance, in terms of diversity of consumed resources) and trophic position (i.e., the place of the population in the food chain or number of trophic levels occupied; Bearhop, Adams, Waldron, Fuller, & Macleod, 2004; Layman, Arrington, Montaña, & Post, 2007; Newsome et al., 2007; Turner, Collyer, & Krabbenhoft, 2010). Inert tissues, such as hair, are particularly useful for SIA, as their isotopic composition reveals the isotopic values of the diet at the time of tissue synthesis (Oelze, 2016). Furthermore, as the incorporation of isotopes in hair occurs over several days/months and because no turnover takes place after isotope deposition, the isotopic signature of hair allows proxying information on a subject's diet over a long time-scale, and this record can be preserved indefinitely (Ayliffe et al., 2004; Ben-David & Flaherty, 2012). For instance, hair isotopic data suggests that sympatric cheirogaleid lemurs (*Cheirogaleus crossleyi* and *C. sibreei*) feed on different canopy heights as a possible mechanism for niche differentiation (i.e., variation in niche width: Crowley, Blanco, Arrigo-Nelson, & Irwin, 2013). On the other hand, variation in  $\delta^{15}\text{N}$  levels among chimpanzees (*Pan troglodytes*) suggests that individuals exploit protein sources from different trophic levels (i.e., occupy different trophic positions: Fahy, Richards, Riedel, & Boesch, 2013).

Primates, both extinct and extant, are a good model for exploring species coexistence, because primate communities usually include several taxa and ecologically similar species are frequently found living in sympatry (e.g., Deane, Nargolwalla, Kordos, & Begun, 2013; Ganzhorn, Wright, & Ratsimbazafy, 1999; Peres & Janson, 1999). Howler monkeys (genus *Alouatta*) are a Neotropical primate radiation that includes 12 species (Cortés-Ortiz, Rylands, & Mittermeier, 2015b). All species are diurnal, arboreal, live in social groups, and have a frugivorous-folivorous diet (Crockett & Eisenberg, 1987). The distributions of howler monkey species are generally allopatric/parapatric, but several contact zones have been described (Cortés-Ortiz et al., 2015a). In particular, mantled (*A. palliata*) and black (*A. pigra*) howler monkeys live in sympatry in southern Mexico (Cortés-Ortiz et al., 2015a). In allopatry, both these species have diets that conform to typical frugivore-folivore pattern observed in the genus, spend more time foraging on leaves than on fruits, and consume approximately 20% and 50% of the same plant species and families, respectively (Dias & Rangel-Negrín, 2015). Still, black howler monkeys spend more time eating fruits than mantled howler monkeys (Dias & Rangel-Negrín, 2015), and it has been speculated that they may differ in color perception (Matsushita, Oota, Welker, Pavelka, & Kawamura, 2014). Thus, mantled and black howler monkeys living in sympatry represent a suitable model to explore the responses of ecologically similar species to interspecific trophic competition. Isotope measurements have been conducted in howler monkeys from Central and South America (Schoeninger, Iwaniec, &

Glander, 1997; van der Merwe & Medina, 1991), and are comparable to those reported for other primates (e.g., great apes: Oelze, Head, Robbins, Richards, & Boesch, 2014; lemurs: Crowley et al., 2013). This convergence is probably related to the fact that vegetation in tropical forests inhabited by primates mainly relies on a C<sup>3</sup> photosynthetic pathway (Blumenthal, Rothman, Chritz, & Cerling, 2016).

Our aim was to investigate variation in the trophic niche of mantled and black howler monkeys in allopatry and sympatry by measuring their  $\delta^{13}\text{C}$  and  $\delta^{15}\text{N}$  isotopic niche. We examined two hypotheses. First, we hypothesized that given their ecological similarity (i.e., similar diets and arboreal lifestyle), trophic niche should be similar between species in both allopatry and sympatry. We tested two predictions of this hypothesis: 1)  $\delta^{13}\text{C}$  and  $\delta^{15}\text{N}$  ranges should be similar among species and allopatry/sympatry conditions; 2) isotopic niche width should be similar among species and allopatry/sympatry conditions. Confirmation of this hypothesis would support previous contentions that a high degree of niche overlap between species, and resulting high potential for interspecific resource competition, is an underlying mechanism for the maintenance of the mostly parapatric distributions of howler monkeys (Agostini, Holzmann, & Di Bitetti, 2010). Second, we hypothesized that, alternatively, trophic niche should diverge between species in sympatry, indicating niche partitioning. Accordingly, we predicted that in sympatry the two species should have: 1) different  $\delta^{13}\text{C}$  and  $\delta^{15}\text{N}$  ranges; and 2) different isotopic niche widths. Support for this hypothesis would provide evidence in

favor of previous suggestions that behavioral variation between mantled and black howler monkeys has derived in differential competitive success (Baumgarten & Williamson, 2007; Cortés-Ortiz et al., 2003; Ford, 2006). The current geographic distribution of these species would thus be the result of interspecific differences in competitive potential (i.e., *A. palliata* displacing *A. pigra*: Ford, 2006).

## **2 | MATERIALS AND METHODS**

### **2.1 | Ethical note**

This study adhered to the American Society of Primatologists (ASP) Principles for the Ethical Treatment of Non-Human Primates. The University of Michigan Committee for the Use and Care of Animals (UCUCA) approved the protocols used for animal restraint and sample collection (permit #09319). Permits for collection and transport of samples were provided by Mexican (SGPA/DGVS/03676/07, SGPA/DGVS/06116, SGPA/DGVS/03293/10, SGPA/DGVS/10637/11, and CITES MX 74679), Guatemalan (CESA/mam/Exp.7739), and Spanish (ES-BB-00038-15I) authorities. This study adhered to the legal requirements of the Mexican law (NOM-059-SEMARNAT-2010).

### **2.2 | Study sites**



The study was conducted in southeastern Mexico and Guatemala (Figure 1). Allopatry for mantled howler monkeys was located in the state of Veracruz (Los Tuxtlas), where we sampled two groups. Allopatry for black howler monkeys was located in the state of Campeche (Mexico; eight groups) and in El Petén (Guatemala; one group). The sympatry area was located in the state of Tabasco (Macuspana area, Mexico), where we sampled 25 groups (12 *A. palliata* and 13 *A. pigra*; Supplementary Table S1).

INSERT FIGURE 1 HERE

Both mean group size (range = 4-6 individuals) and mean size of the habitat occupied by sampled groups were similar between species in sympatry (*A. palliata* = 8 ha, *A. pigra* = 10 ha), although notably larger for *A. pigra* in allopatry (16,021 ha; Supplementary Table S1). We know that some individuals in the sympatry area are admixed due to hybridization (Cortés-Ortiz et al., 2007, 2019). However, admixed individuals are the product of multigenerational backcrosses (Cortés et al., 2019) and their morphology (Kelaita, Dias, Aguilar-Cucurachi, Canales-Espinosa, & Cortés-Ortiz, 2011) matches their behavior (i.e., *A. palliata*-like subjects behave as mantled howler monkeys, *A. pigra*-like subjects behave as black howler monkeys: Ho et al., 2014; Kitchen et al., 2017). Thus, for this study we identified individuals as either mantled or black howler monkeys based on their morphology.

The climate in all conditions is tropical, with variation in annual rainfall: 2,600 mm in Los Tuxtlas, the allopatry area for *A. palliata* (Köppen *Af*, i.e., tropical rainforest climate); 2,400 mm in Tabasco, the sympatry area (*Am*, i.e., tropical monsoon climate); and 1,400 mm in Campeche and northern Guatemala, the allopatry area for *A. pigra* (*Aw*, i.e., tropical wet and dry climate) (Beck et al., 2018; Fick & Hijmans, 2017). In all areas, there is seasonality in rainfall, with a dry season occurring between the months of January to May. Human disturbance has resulted in a significant replacement of original vegetation by agricultural fields and other anthropic land-use covers throughout southern Mexico (Sánchez-Colón, Flores-Martínez, Cruz-Leyva, & Velázquez, 2009).

### 2.3 | Hair collection

During the dry seasons of 2008-2012, we collected hair samples from all individuals belonging to 36 groups, in a total of 200 howler monkeys: 49 black howler monkeys in allopatry, 64 black howler monkeys in sympatry, 75 mantled howler monkeys in sympatry, and 12 mantled howler monkeys in allopatry. We followed the capturing and handling procedures described in Canales-Espinosa et al. (2011). For each captured animal, hair collection followed a standard protocol: a patch of hair was cut from the abdominal area as close to the skin as possible with fine-tipped surgical scissors, taking care not to damage the skin. Each hair sample was placed into a paper

envelope, which in turn was inserted in a plastic bag and stored in a cool, dark environment until analysis.

## 2.4 | Stable isotope analysis

Prior to analysis, we finely cut (ca. 1 mm in length) 10-15 hairs from each collected hair patch with the same length (approximately 5 cm, sufficient to assess isotopic variation over several months; Supplementary Table S2). We then homogenized hair with our fingers and placed it into Eppendorf tubes to be cleaned sequentially with acetone, ethanol, and distilled water in a rotator for about 1 h each, to remove attached lipids or dirt. We dried all samples in an oven (60°C) until a constant weight was reached. This method was designed following the cleaning procedures reported in diverse studies that used hair samples for isotopic analysis (e.g., Ayliffe et al., 2004; Codron et al., 2013; Crowley, 2012; Schoeninger et al., 1997).

We weighed sub-samples of hair (ca. 0.4 mg for  $\delta^{13}\text{C}$  and  $\delta^{15}\text{N}$ ) and placed them in tin capsules. Isotopic analysis was carried out by elemental analysis-isotope ratio mass spectrometry using a Thermo Finnigan Flash 1112 coupled to a Delta isotope ratio mass spectrometer via ConFlo III interface at the Centres Científics i Tècnics (CCiT) of the University of Barcelona. Stable isotope signatures were reported in conventional  $\delta$  notation (‰) relative to Pee Dee Belemnite for  $\delta^{13}\text{C}$  and atmospheric nitrogen for  $\delta^{15}\text{N}$ . The  $\delta^{13}\text{C}$  standard was Vienna Pee Dee Belemnite (VPDB) calcium carbonate, and the  $\delta^{15}\text{N}$  standard was atmospheric nitrogen

(N2). International standards (ammonium sulfate, potassium nitrate, glutamic acid for  $\delta^{15}\text{N}$  and polyethylene, sucrose and glutamic acid for  $\delta^{13}\text{C}$ ) were inserted after every 12 samples to calibrate the system and compensate for any drift over time. Precision was  $\leq 0.1\text{‰}$  for  $\delta^{13}\text{C}$  and  $\leq 0.3\text{‰}$  for  $\delta^{15}\text{N}$ .

## 2.5 | Data analysis

Sex did not have significant effects (linear mixed models using group identity as a random factor) on either  $\delta^{13}\text{C}$  (*A. palliata*:  $F^2_{88} = 0.03$ ,  $P = 0.859$ ; *A. pigra*:  $F^3_{112} = 3.34$ ,  $P = 0.071$ ) or  $\delta^{15}\text{N}$  (*A. palliata*:  $F^2_{88} = 1.97$ ,  $P = 0.163$ ; *A. pigra*:  $F^3_{112} = 0.75$ ,  $P = 0.390$ ) hair values. Therefore, we did not include this factor in further analysis.

We used statistical analyses that account for the small and unbalanced sample sizes we had in our study. To characterize the isotopic niche of each species in each condition (i.e., allopatry vs. sympatry), we calculated: 1) mean isotopic values, and compared isotopic values with Kruskal-Wallis tests followed by Mann-Whitney post-hoc tests with significance levels corrected for multiple comparisons (Bonferroni corrected  $P < 0.004$ ); 2) the range of  $\delta^{13}\text{C}$  values, which is a proxy for the diversity of consumed resources (Layman et al., 2007); 3) the range of  $\delta^{15}\text{N}$  values, which is a proxy for the number of trophic levels occupied (Layman et al., 2007); 4) the isotopic niche width using multivariate ellipse-based metrics of  $\delta^{13}\text{C} \times \delta^{15}\text{N}$  values (Jackson, Inger, Parnell, & Bearhop, 2011). Specifically, we calculated standard ellipse areas

corrected for small sample size ( $SEA_c$ ), which represent the core mean of the population's isotopic niche, regardless of sample size (Jackson et al., 2011). We also generated Bayesian estimates of standard ellipse areas ( $SEA_b$ ) to test for differences in isotopic niche width via  $SEA_b$  95% credible interval comparisons; 5) pairwise overlapping of  $SEA_c$  between species in sympatry and in allopatry as the proportion of the sum of the non-overlapping areas of the ellipses (function 'bayesianOverlap' in SIBER). We calculated standard ellipse areas and metrics with the R package 'SIBER' (Jackson & Parnell, 2019).

### 3 | RESULTS

We found significant variation in  $\delta^{13}\text{C}$  ( $\chi^2_3 = 92.3$ ,  $P < 0.001$ ) and  $\delta^{15}\text{N}$  ( $\chi^2_3 = 56.4$ ,  $P < 0.001$ ).

Specifically,  $\delta^{13}\text{C}$  was the highest in black howler monkeys in allopatry and  $\delta^{15}\text{N}$  was the highest in black howler monkeys in sympatry ( $P < 0.004$  in all pairwise comparisons; Table 1; Figure 2).

The range of  $\delta^{13}\text{C}$  was very similar across sympatry and allopatry in both species, although marginally smaller in mantled howler monkeys living in allopatry. In allopatry,  $\delta^{15}\text{N}$  range was the same in black howler monkeys and mantled howler monkeys. The range of  $\delta^{15}\text{N}$  in black howler monkeys in sympatry doubled that of both species in allopatry, whereas mantled howler monkeys in sympatry had an intermediate range.

INSERT TABLE 1 & FIGURE 2 HERE

Black howler monkeys living in allopatry and mantled howler monkeys living in both allopatry and sympatry had similar isotopic niche widths, as attested by  $SEA_c$  and  $SEA_b$  values (Table 1; Figure 3). Black howler monkeys in sympatry had the widest isotopic niche (Figure 4).

INSERT FIGURES 3 & 4 HERE

The area of overlap was the highest between the isotopic niches of both species living in sympatry, which was twice the overlap area between black howler monkeys in allopatry and mantled howler monkeys in sympatry (Figure 5).  $SEA_c$  of both species in sympatry and of mantled howler monkeys in allopatry overlapped more than  $SEA_c$  of black howler monkeys in allopatry and both black howler monkeys in sympatry and mantled howler monkeys in allopatry.

INSERT FIGURE 5 HERE

#### 4 | DISCUSSION

We took advantage of a natural area of sympatry between two species of howler monkeys to examine if the coexistence of ecologically similar species is associated with trophic niche

partitioning, assessed through isotopic niche measurements. In allopatry, isotopic niche width and isotopic variation were similar in mantled and black howler monkeys, confirming their ecological similarity at the trophic level. In sympatry we found evidence of trophic niche partitioning between these two species, supporting the second hypothesis. This partitioning was not linked to isotopic niche segregation, as defined by a high proportion of non-overlapping isotopic niches. Rather, black howler monkeys had a significantly broader isotopic niche in sympatry, which was mainly determined by high  $\delta^{15}\text{N}$  values, and included the majority of mantled howler monkeys' isotopic niche. Additionally, the isotopic niche of mantled howler monkeys did not differ between sympatry and allopatry. Therefore, the coexistence of these two species may be linked to trophic adjustments by black howler monkeys, supporting previous contentions that they may differ in adaptive choices (Ford, 2006).

The isotopic values that we found are consistent with those reported in previous studies of howler monkeys from Central and South America (Schoeninger et al., 1997; van der Merwe & Medina, 1991), but also with values reported for other primates (e.g., Crowley et al., 2013; Oelze et al., 2014). This consistency is likely because howler monkeys, as most other primates (Harcourt, 2006), inhabit tropical forests dominated by vegetation with a  $\text{C}_3$  photosynthetic pathway (Blumenthal et al., 2016). Still, black howler monkeys showed a wider isotopic range than that reported in previous studies for the genus, especially in  $\delta^{15}\text{N}$  values. In addition to its possible relationship with a high degree of trophic flexibility by this species when in sympatry

(discussed below), it is important to note that our results are based on a sample size ( $N = 200$  subjects) considerably larger than that of previous studies ( $N = 12$  in Schoeninger et al., 1997;  $N = 1$  in van der Merwe & Medina, 1991).

Black howler monkeys living in sympatry with mantled howler monkeys had the widest isotopic niche. There was, however, extensive niche overlap between species in sympatry. Niche overlap among species basically defines species exclusion or coexistence when competition takes place (De Roos, Schellekens, Van Kooten, & Persson, 2008). Niche overlap can cause adjustments in habitat use and trophic niche (e.g., Lush, Ward, & Wheeler, 2017; Merkle, Polfus, Derbridge, & Heinemeyer, 2017; Oelze et al., 2014), but also species marginalization and disappearance (e.g., Beaudrot et al., 2013; Simon & Townsend, 2003; Steinmetz et al., 2011). In contrast, niche diversification, in which competing species focus on different resources or exploit the same resources at diverse places or moments (i.e., spatial or temporal niche partitioning), favors species coexistence (Chesson, 2000; Tilman, 1982). Our results suggest that the coexistence of mantled and black howler monkeys in sympatry is probably favored by isotopic niche diversification by the latter. Long-term observations on patterns of species distribution in sympatry will confirm whether coexistence or exclusion is occurring (Agostini et al., 2010; Baumgarten & Williamson, 2007; Cortés-Ortiz et al., 2003; Ford, 2006), although habitat disturbance in the area is critically threatening the viability of both populations (Dias, Alvarado, Rangel-Negrín, Canales-Espinosa, & Cortés-Ortiz, 2013).



In the absence of behavioral observations and of isotope quantification in the foods consumed by howler monkeys, we can only speculate on the causes of the observed variation in isotopic values. Whereas it is plausible to suggest that the high  $\delta^{13}\text{C}$  of black howler monkeys in allopatry, the driest condition in our sample, could be associated with a negative relationship between rainfall levels and  $\delta^{13}\text{C}$  that has been consistently reported (e.g., Schoeninger, Most, Moore, & Somerville, 2016), it is more difficult to explain the high  $\delta^{15}\text{N}$  of this species in sympatry. Mean  $\delta^{15}\text{N}$  values of black howler monkeys in sympatry were similar to those of omnivorous chimpanzees (*Pan troglodytes*: Oelze et al., 2014), insectivorous–frugivorous mouse lemurs (*Microcebus* spp.: Crowley et al., 2013), or frugivorous spider monkeys (*Ateles geoffroyi*: Schoeninger et al., 1997). Therefore, it is possible that black howler monkeys are consuming more nitrogen enriched foods than mantled howler monkeys, such as legumes (Schoeninger et al., 1997) or animal prey (Crowley et al., 2013; Fahy et al., 2013; Oelze et al., 2011). Still, mean differences in  $\delta^{15}\text{N}$  between black howler monkeys and mantled howler monkeys did not reach the 3‰ threshold, which is usually considered to reflect a change in trophic position (Ben-David & Flaherty, 2012; Blumenthal et al., 2016; Crowley, 2012; DeNiro & Epstein, 1981; Post, 2002), suggesting that the consumption of animal protein, if it occurs at all, may be infrequent or restricted to particular contexts (e.g., animals that have access to eggs: Bicca-Marques, Muhle, Prates, de Oliveira, & Calegari-Marques, 2009).

If isotopic niche variation between howler monkey species living in sympatry is actually linked to trophic niche variation, its underlying mechanisms remain to be determined. Variation in the feeding habits of howler monkeys has been linked to rainfall, group size, and habitat size (Dias & Rangel-Negrín, 2005). Given that these factors did not vary between groups of the two species in the sympatry area, it is unlikely that they explain the observed differences in isotopic niches. Still, we know that, compared to mantled howler monkeys, black howler monkeys on average devote more time to consuming fruits than leaves (Dias & Rangel-Negrín, 2015) and that there may be variation between species in color vision (Matsushita et al., 2014). Small-scale variation in the proportions of consumed foods and sensory variation could facilitate species coexistence (Falk et al., 2015; Lush et al., 2017), even in the absence of spatial or temporal niche partitioning (Carothers & Jaksic, 1984; Schoener, 1974), so future research into the mechanisms of niche partitioning could focus on these factors.

In sum, we found evidence that the isotopic niche of two howler monkey species varies from allopatry to sympatry via the broadening of the niche by one of the species when in sympatry. Therefore, we suggest that the coexistence of black and mantled howler monkeys is linked to trophic niche adjustments, although the particular features of such adjustments (e.g., dietary, spatial, or sensory partitioning) remain to be addressed by future investigation.

## **ACKNOWLEDGEMENTS**

We dedicate this work to the memory of the late Lluís Jover and Diana Angeles Ramírez Saldivar, enthusiastic ecologists and good friends.

We thank all people involved in fieldwork for their invaluable efforts. The following people and institutions facilitated our fieldwork: Ing. J.L. Ponce Puente, La Flor de Catemaco S. A. de C.V.; Comisarios Ejidales de Chekubul and Conhuas; Igor, Carmén Gómez, and Ricardo Valencia; Ayuntamiento de Calakmul; Ing. A. Sánchez Martínez, El Tormento, INIFAP; Lic. C. Vidal and Lic. L. Álvarez, INAH Campeche; Biól. F. Durand Siller, Reserva de la Biósfera Calakmul, CONANP; Ing. V. Olvera, El Álamo; Dr. Mario Pérez, Rancho Jalapilla; G. Ponce Santizo, WCS, Guatemala; and the various landowners in the Tabasco area for allowing us to conduct research on their properties. We thank M.G. Pérez-Grovas for collecting the hair growth data. We thank V. Morera and M. Sánchez for their help with the R software, and to F. Ramírez, an Editorial Board Member from AJPA, and two anonymous reviewers for very useful suggestions on previous versions of the manuscript. Samples for this study were collected with funding from Universidad Veracruzana to D.C.E., A.R.N., and P.A.D.D, Comisión Federal de Electricidad (RGCP-TP-UV-001/04) to D.C.E., and the National Science Foundation (DEB-0640519, BCS-0962807, and BCS-1517701) to L.C.O. E.F.E. was supported by CONACyT (grants 218078 and 396184). A. Rangel-Negrín and P.A.D. Dias thank Fernando and Mariana for inspiration to continue studying primate behavior and ecology.

## DATA ACCESSIBILITY

The data that support the findings of this study are available from the corresponding author upon reasonable request.

## REFERENCES

- Agostini, I., Holzmann, I., & Di Bitetti, M. S. (2010). Are howler monkey species ecologically equivalent? Trophic niche overlap in syntopic *Alouatta guariba clamitans* and *Alouatta caraya*. *American Journal of Primatology*, *72*, 173–186.
- Araújo, M. S., Bolnick, D. I., & Layman, C. A. (2011). The ecological causes of individual specialisation. *Ecology Letters*, *14*, 948–958.
- Ayliffe, L., Cerling, T., Robinson, T., West, A., Sponheimer, M., Passey, B. H., Hammer, J., Roeder, B., Dearing, M. D., & Ehleringer, J. R. (2004). Turnover of carbon isotopes in tail hair and breath CO<sub>2</sub> of horses fed an isotopically varied diet. *Oecologia*, *139*, 11–22.
- Baumgarten, A., & Williamson, G. B. (2007). The distributions of howling monkeys (*Alouatta pigra* and *A. palliata*) in southeastern Mexico and Central America. *Primates*, *48*, 310–315.
- Bearhop, S., Adams, C. E., Waldron, S., Fuller, R. A., & Macleod, H. (2004). Determining trophic niche width: A novel approach using stable isotope analysis. *Journal of Animal Ecology*, *73*, 1007–1012.

- Beaudrot, L., Struebig, M. J., Meijaard, E., Van Balen, S., Husson, S., & Marshall, A. J. (2013). Cooccurrence patterns of Bornean vertebrates suggest competitive exclusion is strongest among distantly related species. *Oecologia*, *173*, 1053–1062.
- Beck, H. E., Zimmermann, N. E., McVicar, T. R., Vergoplan, N., Berg, A., & Wood, E. F. (2018). Present and future Köppen-Geiger climate classification maps at 1-km resolution. *Scientific Data*, *5*, 180214.
- Ben-David, M., & Flaherty, E. A. (2012). Stable isotopes in mammalian research: A beginner's guide. *Journal of Mammalogy*, *93*, 312–328.
- Bicca-Marques, J. C., Muhle, C. B., Prates, H. M., de Oliveira, S. G., & Calegari-Marques, C. (2009). Habitat impoverishment and egg predation by *Alouatta caraya*. *International Journal of Primatology*, *30*, 743–748.
- Blumenthal, S. A., Rothman, J. M., Chritz, K. L., & Cerling, T. E. (2016). Stable isotopic variation in tropical forest plants for applications in primatology. *American Journal of Primatology*, *78*, 1041–1054.
- Canales-Espinosa, D., Dias, P. A. D., Rangel-Negrín, A., Aguilar-Cucurachi, S., García-Orduña, F., & Hermida-Lagunes, J. (2011). Translocación de primates mexicanos. In: P. A. D. Dias, A. Rangel-Negrín, D. Canales-Espinosa (Eds.), *La conservación de los primates en México* (pp. 81–107). Xalapa, Ver: Consejo Veracruzano de Ciencia y Tecnología.

- Carothers, J. H., & Jaksic, F. M. (1984). Time as a niche difference: The role of interference competition. *Oikos*, *42*, 403–406.
- Chase, J. M., & Leibold, M. A. (2003). *Ecological niches*. Chicago, IL: University of Chicago Press.
- Chesson, P. (2000). Mechanisms of maintenance of species diversity. *Annual Review of Ecology and Systematics*, *31*, 343–366.
- Codron, J., Kirkman, K., Duffy, K. J., Sponheimer, M., Lee-Thorp, J. A., Ganswindt, A., Clauss, M., & Codron, D. (2013). Stable isotope turnover and variability in tail hairs of captive and free-ranging African elephants (*Loxodonta africana*) reveal dietary niche differences within populations. *Canadian Journal of Zoology*, *91*, 124–134.
- Cortés-Ortiz, L., Agostini, I., Aguiar, L. M., Kelaita, M., Silva, F. E., & Bicca-Marques, J. C. (2015a). Hybridization in howler monkeys: Current understanding and future directions. In: M. M. Kowalewski, P. A. Garber, L. Cortés-Ortiz, B. Urbani, & D. Youlatos (Eds.), *Howler monkeys: Adaptive radiation, systematics, and morphology* (pp. 107–131). New York: Springer.
- Cortés-Ortiz, L., Bermingham, E., Rico, C., Rodríguez-Luna, E., Sampaio, I., Ruiz-García, M. (2003). Molecular systematics and biogeography of the Neotropical monkey genus, *Alouatta*. *Molecular Phylogenetics and Evolution*, *26*, 64–81.
- Cortés-Ortiz, L., Duda, T. F., Canales-Espinosa, D., García-Orduña, F., Rodríguez-Luna, E., & Bermingham, E. (2007). Hybridization of large-bodied New World primates. *Genetics*, *176*, 2421–2425.

- Cortés-Ortiz, L., Nidiffer, M. D., Hermida-Lagunes, J., García-Orduña, F., Rangel-Negrín, A., Kitchen, D. M., Bergman, T. B., Dias, P. A. D., & Canales-Espinosa, D. (2019). Reduced introgression of sex chromosome markers in the Mexican howler monkey (*Alouatta palliata* x *A. pigra*) hybrid zone. *International Journal of Primatology*, *40*, 114–131.
- Cortés-Ortiz, L., Rylands, A. B., & Mittermeier, R. A. (2015b). The taxonomy of howler monkeys: Integrating old and new knowledge from morphological and genetic studies. In: M. M. Kowalewski, P. A. Garber, L. Cortés-Ortiz, B. Urbani, & D. Youlatos (Eds.), *Howler monkeys: Adaptive radiation, systematics, and morphology* (pp. 55–84). New York: Springer.
- Crawford, K., McDonald, R. A., & Bearhop, S. (2008). Applications of stable isotope techniques to the ecology of mammals. *Mammal Review*, *38*, 87–107.
- Crockett, C. M., & Eisenberg, J. F. (1987). Howlers: Variations in group size and demography. In: B. B. Smuts, D. L. Cheney, R. M. Seyfarth, R. W. Wrangham, & T. M. Struhsaker (Eds.), *Primate societies* (pp. 54-68). Chicago: The University of Chicago Press.
- Crowley, B. E. (2012). Stable isotope techniques and applications for primatologists. *International Journal of Primatology*, *33*, 673–701.
- Crowley, B. E., Blanco, M. B., Arrigo-Nelson, S. J., & Irwin, M. T. (2013). Stable isotopes document resource partitioning and effects of forest disturbance on sympatric cheirogaleid lemurs. *Naturwissenschaften*, *100*, 943–956.

- Dammhahn, M., & Kappeler, P. M. (2014). Stable isotope analyses reveal dense trophic species packing and clear niche differentiation in a Malagasy primate community. *American Journal of Physical Anthropology*, *153*, 249–259.
- Davies, T. J., Meiri, S., Barraclough, T. G., & Gittleman, J. L. (2007). Species co-existence and character divergence across carnivores. *Ecology Letters*, *10*, 146–152.
- Dayan, T., & Simberloff, D. (2005). Ecological and community-wide character displacement: The next generation. *Ecology Letters*, *8*, 875–894.
- Deane, A. S., Nargolwalla, M. C., Kordos, L., & Begun, D. R. (2013). New evidence for diet and niche partitioning in *Rudapithecus* and *Anapithecus* from Rudabánya, Hungary. *Journal of Human Evolution*, *65*, 704–714.
- DeNiro, M. J., & Epstein, S. (1981). Influence of diet on the distribution of nitrogen isotopes in animals. *Geochimica et Cosmochimica Acta*, *45*, 341–351.
- De Roos, A. M., Schellekens, T., Van Kooten, T., & Persson, L. (2008). Stage-specific predator species help each other to persist while competing for a single prey. *Proceedings of the National Academy of Sciences*, *105*, 13930–13935.
- Dias, P. A. D., Alvarado, D., Rangel-Negrín, A., Canales-Espinosa, D., & Cortés-Ortiz, L. (2013). Landscape attributes affecting the natural hybridization of Mexican howler monkeys. In: L. Marsh, & C. A. Chapman (Eds.), *Primates in Fragments vol. 2* (pp. 423–435). New York: Springer.



- Dias, P. A. D., & Rangel-Negrín, A. (2015). Diets of howler monkeys. In: M. M. Kowalewski, P. A. Garber, L. Cortés-Ortiz, B. Urbani, & D. Youlatos (Eds.), *Howler monkeys: Behavior, ecology and conservation* (pp. 21–56). New York: Springer.
- Fahy, G. E., Richards, M. P., Riedel, J., Hublin, J. J., & Boesch, C. (2013). Stable isotope evidence of meat eating and hunting specialization in adult male chimpanzees. *Proceedings of the National Academy of Sciences*, *110*, 5829–5833.
- Falk, J. J., ter Hofstede, H. M., Jones, P. L., Dixon, M. M., Faure, P. A., Kalko, E. K. V., & Page, R. A. (2015). Sensory-based niche partitioning in a multiple predator–multiple prey community. *Proceedings of the Royal Society B*, *282*, 20150520.
- Fick, S. E., & Hijmans, R. J. (2017). WorldClim 2: New 1-km spatial resolution climate surfaces for global land areas. *International Journal of Climatology*, *37*, 4302–4315.
- Ford, S. M. (2006). The biogeographic history of Mesoamerican primates. In: A. Estrada, P. A. Garber, M. S. M. Pavelka, & L. A. Luecke (Eds.), *New perspectives in the study of Mesoamerican primates: Distribution, ecology, behavior and conservation* (pp. 81–114). New York: Springer.
- Ganzhorn, J. U., Wright, P. C., & Ratsimbazafy, J. (1999). Primate communities: Madagascar. In: J. G. Fleagle, C. H. Janson, & K. E. Reed (Eds.), *Primate communities* (pp. 75–89). Cambridge: Cambridge University Press.

- Grant, P. R., & Grant, B. R. (2002). Unpredictable evolution in a 30-year study of Darwin's finches. *Science*, *296*, 707–711.
- Harcourt, A. H. (2006). Rarity in the tropics: Biogeography and macroecology of the primates. *Journal of Biogeography*, *33*, 2077–2087.
- Ho, L., Cortés-Ortiz, L., Dias, P. A. D., Canales-Espinosa, D., Kitchen, D. M., & Bergman, T. J. (2014). Effect of ancestry on behavioral variation in two species of howler monkeys (*Alouatta pigra* and *A. palliata*) and their hybrids. *American Journal of Primatology*, *76*, 855–867.
- Hobson, K. A. (1999). Tracing origins and migration of wildlife using stable isotopes: A review. *Oecologia*, *120*, 314–326.
- Hobson, K. A., & Clark, R. G. (1992). Assessing avian diets using stable isotopes II: Factors influencing diet-tissue fractionation. *Condor*, *94*, 189–197.
- Hutchinson, G. E. (1957). Concluding remarks. *Cold Spring Harbor Symposia on Quantitative Biology*, *22*, 415–427.
- Jackson, A., Inger, R., Parnell, A. C., & Bearhop, S. (2011). Comparing isotopic niche widths among and within communities: SIBER – Stable Isotope Bayesian Ellipses in R. *Journal of Animal Ecology*, *80*, 595–602.
- Jackson, A., & Parnell, A. C. (2019). Package SIBER. R package version 2.1.4.

Kelaita, M., Dias, P. A. D., Aguilar-Cucurachi, M. S., Canales-Espinosa, D., & Cortés-Ortiz, L.

(2011). Impact of intrasexual selection on sexual dimorphism and testes size in the Mexican howler monkeys *Alouatta palliata* and *A. pigra*. *American Journal of Physical Anthropology*, *146*, 179–187.

Kitchen, D. M., Cortés-Ortiz, L., Ho, L., Dias, P. A. D., Canales-Espinosa, D., & Bergman, T. J.

(2017). Temporal but not acoustic plasticity in hybrid howler monkey (*Alouatta palliata* x *A. pigra*) loud calls. *International Journal of Primatology*, *40*, 132–152.

Kohn, M. J. (2010). Carbon isotope compositions of terrestrial C<sup>3</sup> plants as indicators of

(paleo)ecology and (paleo)climate. *Proceedings of the National Academy of Sciences USA*, *107*, 19691–19695.

Kuhnen, V. V., Romero, G. Q., Linhares, A. X., Vizentin-Bugoni, J., Porto, E. A. C., & Setz, E. Z. F.

(2017). Diet overlap and spatial segregation between two neotropical marsupials revealed by multiple analytical approaches. *PLoS ONE*, *12*, e0181188.

Layman, C. A., Arrington, D. A., Montaña, C. G., & Post, D. M. (2007). Can stable isotope ratios

provide for community-wide measures of trophic structure? *Ecology*, *88*, 42–48.

López-Bao, J. V., Mattisson, J., Persson, J., Aronsson, M., & Andrén, H. (2016). Tracking

neighbours promotes the coexistence of large carnivores. *Scientific Reports*, *6*, 23198.

Lush, L., Ward, A. I., & Wheeler, P. (2017). Dietary niche partitioning between sympatric brown

hares and rabbits. *Journal of Zoology*, *303*, 36–45.

- Matsushita, Y., Oota, H., Welker, B. J., Pavelka, M. S., & Kawamura, S. (2013). Color vision variation as evidenced by hybrid L/M opsin genes in wild populations of trichromatic *Alouatta* New World monkeys. *International Journal of Primatology*, *35*, 71–87.
- Merkle, J. A., Polfus, J. L., Derbridge, J. J., & Heinemeyer, K. S. (2017). Dietary niche partitioning among black bears, grizzly bears and wolves in a multi-prey ecosystem. *Canadian Journal of Zoology*, *95*, 663–671.
- Newsome, S. D., Martínez del Rio, C., Bearhop, S., & Phillips, D. L. (2007). A niche for isotopic ecology. *Frontiers in Ecology and Environment*, *5*, 429–436.
- Oelze, V. M. (2016). Reconstructing temporal variation in great ape and other primate diets: A methodological framework for isotope analyses in hair. *American Journal of Primatology*, *78*, 1004–1016.
- Oelze, V. M., Fuller, B. T., Richards, M. P., Fruthd, B., Surbeckd, M., Hublina, J-J., & Hohmann, G. (2011). Exploring the contribution and significance of animal protein in the diet of bonobos by stable isotope ratio analysis of hair. *Proceedings of the National Academy of Sciences*, *108*, 9792–9797.
- Oelze, V. M., Head, J. S., Robbins, M. M., Richards, M., & Boesch, C. (2014). Niche differentiation and dietary seasonality among sympatric gorillas and chimpanzees in Loango National Park (Gabon) revealed by stable isotope analysis. *Journal of Human Evolution*, *66*, 95–106.

- Peres, C. A., & Janson, C. H. (1999). Species coexistence, distribution and environmental determinants of neotropical primate richness: A community-level zoogeographic analysis. In: J. G. Fleagle, C. H. Janson, & K. E. Reed (Eds.), *Primate communities* (pp. 55–74). Cambridge: Cambridge University Press.
- Pianka, E. R. (1974). Niche overlap and diffuse competition. *Proceedings of the National Academy of Sciences*, *71*, 2141–2145.
- Pianka, E. R. (1981). Competition and niche theory. In: R. M. May (Ed.), *Theoretical ecology* (pp. 167–196). Oxford: Blackwell.
- Post, D. M. (2002). Using stable isotopes to estimate trophic position: Models, methods, and assumptions. *Ecology*, *83*, 703–718.
- Sánchez Colón, S., Flores Martínez, A., Cruz-Leyva, I. A., & Velázquez, A. (2009). Estado y transformación de los ecosistemas terrestres por causas humanas. In: CONABIO (Ed.), *Capital natural de México, vol. II: Estado de conservación y tendencias de cambio* (pp. 75–129). México: CONABIO.
- Schoener, T. W. (1974). Resource partitioning in ecological communities. *Science*, *185*, 27–39.
- Schoeninger, M. J., Iwaniec, U. T., & Glander, K. E. (1997). Stable isotope ratios indicate diet and habitat use in New World Monkeys. *American Journal of Physical Anthropology*, *103*, 69–83.

- Schoeninger, M. J., Most, C. A., Moore, J. J., & Somerville, A. D. (2016). Environmental variables across *Pan troglodytes* study sites correspond with the carbon, but not the nitrogen, stable isotope ratios of chimpanzee hair. *American Journal of Primatology*, *78*, 1055–1069.
- Simon, K. S., & Townsend, C. R. (2003). Impacts of freshwater invaders at different levels of ecological organisation, with emphasis on salmonids and ecosystem consequences. *Freshwater Biology*, *48*, 982–994.
- Steinmetz, R., Garshelis, D. L., Chutipong, W., & Seuaturien, N. (2011). The shared preference niche of sympatric Asiatic black bears and sun bears in a tropical forest mosaic. *PLoS ONE*, *6*, e14509.
- Tilman, D. (1982). *Resource competition and community structure*. New Jersey: Princeton University Press.
- Turner, T. F., Collyer, M. L., & Krabbenhoft, T. J. (2010). A general hypothesis-testing framework for stable isotope ratios in ecological studies. *Ecology*, *91*, 2227–2233.
- Vanak, A. T., Fortin, D., Thaker, M., Ogden, M., Owen, C., Greatwood, S., & Slotow, R. (2013). Moving to stay in place: behavioral mechanisms for coexistence of African large carnivores. *Ecology*, *94*, 2619–2631.
- van der Merwe, N. J., & Medina, E. (1991). The canopy effect, carbon isotope ratios and foodwebs in Amazonia. *Journal of Archaeological Science*, *18*, 249–259.

Vernes, K. (2003). Fine-scale habitat preferences and habitat partitioning by three mycophagous mammals in tropical wet sclerophyll forest, north-eastern Australia. *Austral Ecology*, 28, 471–479.

Wisheu, I. R. (1998). How organisms partition habitats: Different types of community organization can produce identical patterns. *Oikos*, 83, 246–258.

### Figure legends

**FIGURE 1.** Location of the sampled groups, showing the distribution range of mantled (*Alouatta palliata*, light gray) and black (*Alouatta pigra*, dark gray) howler monkeys. Black squares represent group locations. Inset is a zoom of groups sampled in the sympatry condition. Primate drawings by Stephen Nash.

**FIGURE 2.** Variation in  $\delta^{13}\text{C}$  (A) and  $\delta^{15}\text{N}$  (B) values among two species of howler monkeys living in allopatry and sympatry. Thick lines inside the boxes are the medians; black diamonds are the means; box limits are the 25th and 75th percentiles; whiskers indicate 1.5\*interquartile ranges; data points are plotted as red circles. Pairwise comparisons performed with Mann-Whitney univariate tests: n.s. = non-significant; \*\*\* =  $P < 0.004$ .



**FIGURE 3.** Variation in  $\delta^{13}\text{C}$  and  $\delta^{15}\text{N}$  from howler monkey hair samples and bivariate ellipses ( $\text{SEA}_c$ ) estimated by SIBER analysis (Stable Isotope Bayesian Ellipses in R): *A. pigra* in allopatry = red oval and open circles; *A. pigra* in sympatry = blue oval and open triangles; *A. palliata* in sympatry = orange oval and times signs; *A. palliata* in allopatry = green oval and plus signs.  $\text{SEA}_c$  were calculated from the variance and covariance of the isotope ratios and reveals the core nucleus of the isotopic dietary niche of the study animals.

**FIGURE 4.** Density plots showing the credibility intervals (50% pale blue, 75% light blue, and 95% dark blue) of the standard ellipse areas for howler monkeys living in allopatry and sympatry estimated by SIBER analysis (Stable Isotope Bayesian Ellipses in R). White points are the mean standard ellipse areas of each species in each condition corrected for small sample size ( $\text{SEA}_c$ ).

**FIGURE 5.** Overlap (numbers inside boxes) of the standard ellipse areas ( $\text{SEA}_c$ ) of howler monkeys living in allopatry and sympatry estimated by SIBER analysis (Stable Isotope Bayesian Ellipses in R). Color intensity increases with  $\text{SEA}_c$  overlap.

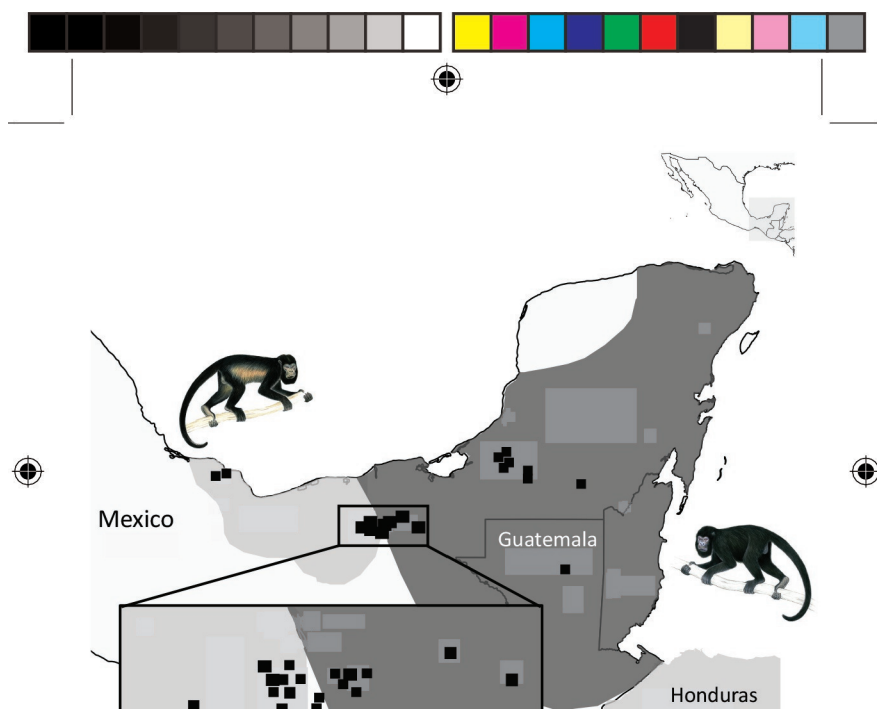


## Tables

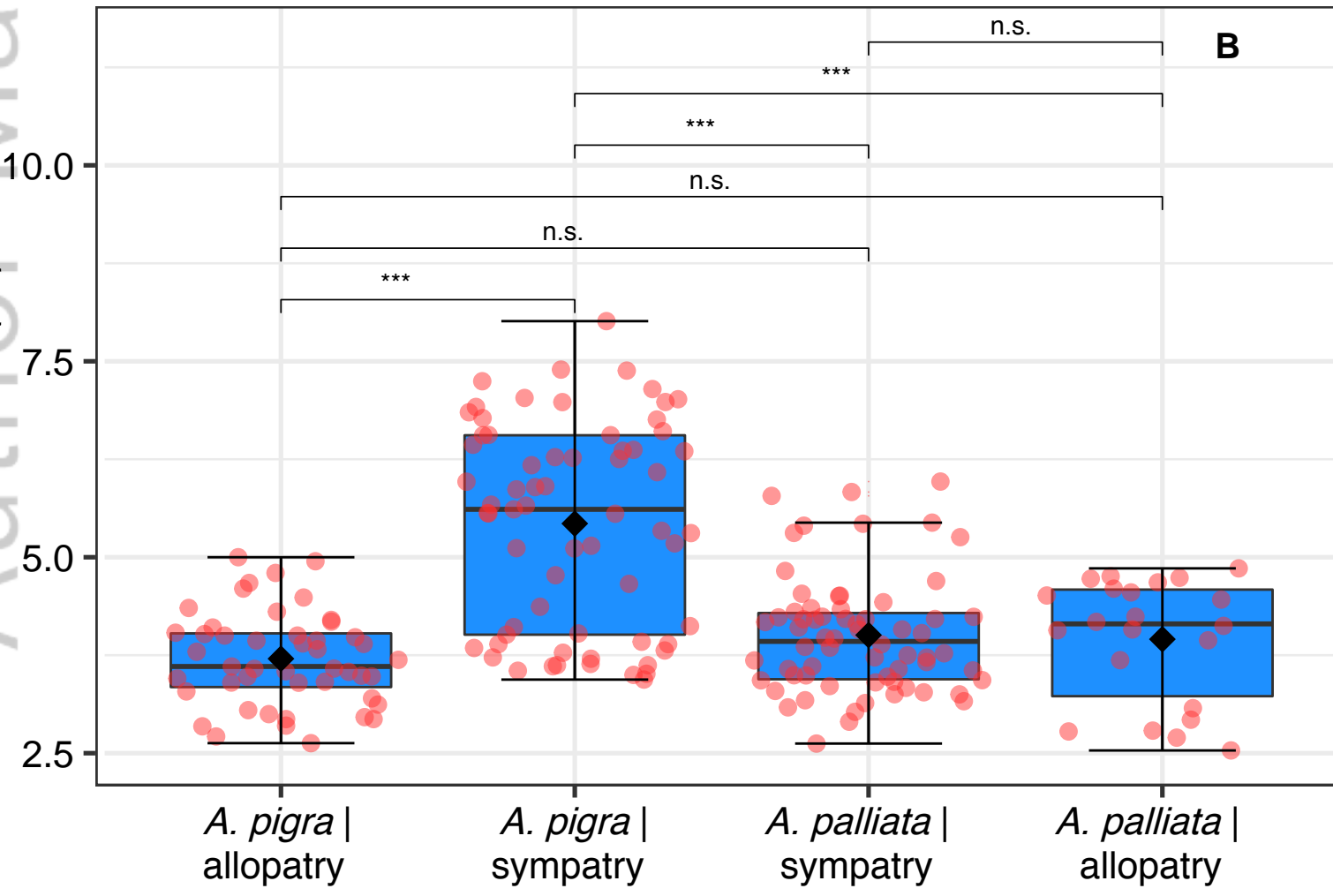
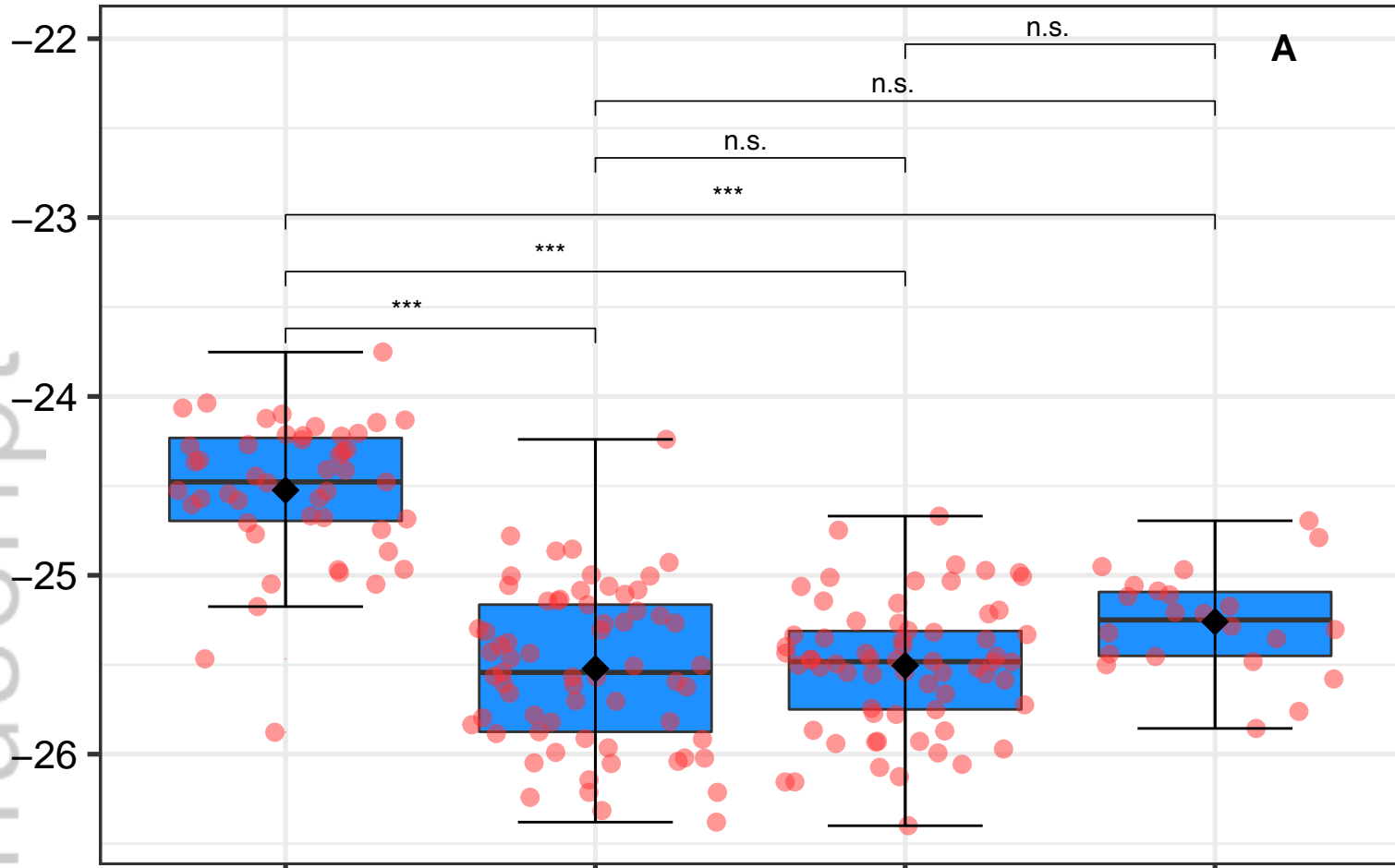
**TABLE 1.** Hair stable isotopic values from two howler monkey species living in allopatry and in sympatry in southern Mexico and Guatemala.

Isotopic niche attributes	<i>Alouatta pigra</i>		<i>Alouatta palliata</i>	
	Allopatry	Sympatry	Sympatry	Allopatry
	<i>N</i> = 49	<i>N</i> = 64	<i>N</i> = 75	<i>N</i> = 12
Mean $\delta^{13}\text{C}$ (‰)	-24.5	-25.5	-25.5	-25.3
$\delta^{13}\text{C}$ range (‰)	-25.9–(-23.8)	-26.4–(-24.2)	-26.4–(-24.7)	-25.9–(-24.7)
Mean $\delta^{15}\text{N}$ (‰)	3.7	5.4	4.0	3.9
$\delta^{15}\text{N}$ range (‰)	2.6–5.0	3.4–8.0	2.6–5.9	2.5–4.9
SEA <sub>c</sub> <sup>a</sup>	0.76	1.46	0.86	0.70
SEA <sub>b</sub> <sup>a</sup>	0.75	1.44	0.85	0.67
95% C.I. <sup>a</sup>	0.55–0.97	1.11–1.84	0.66–1.06	0.42–1.01

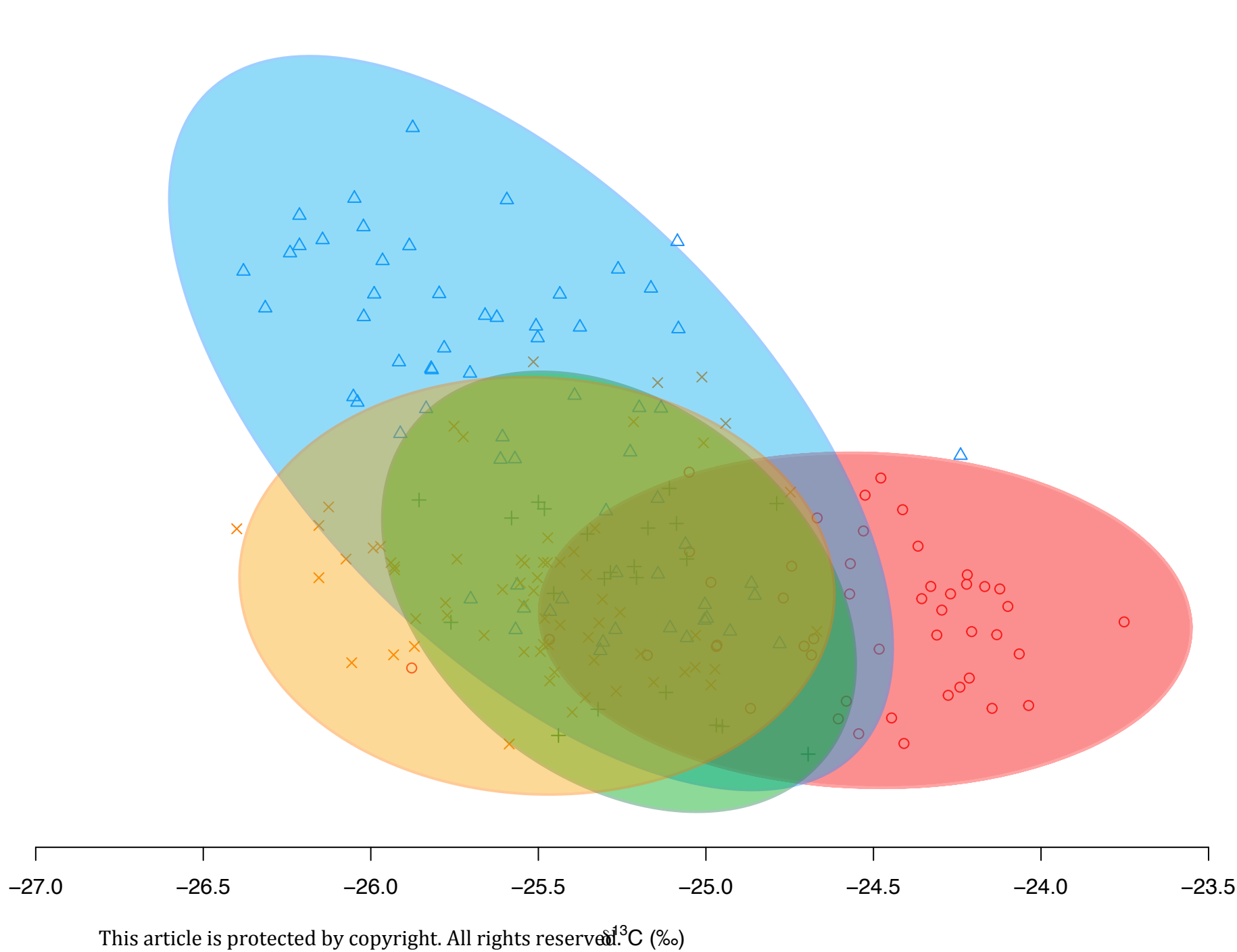
<sup>a</sup> Standard ellipse areas corrected for small sample size (SEA<sub>c</sub>), Bayesian standard ellipse areas (SEA<sub>b</sub>), and SEA<sub>b</sub> 95% credible intervals were calculated with SIBER (see Jackson et al., 2011 for more details on these metrics).

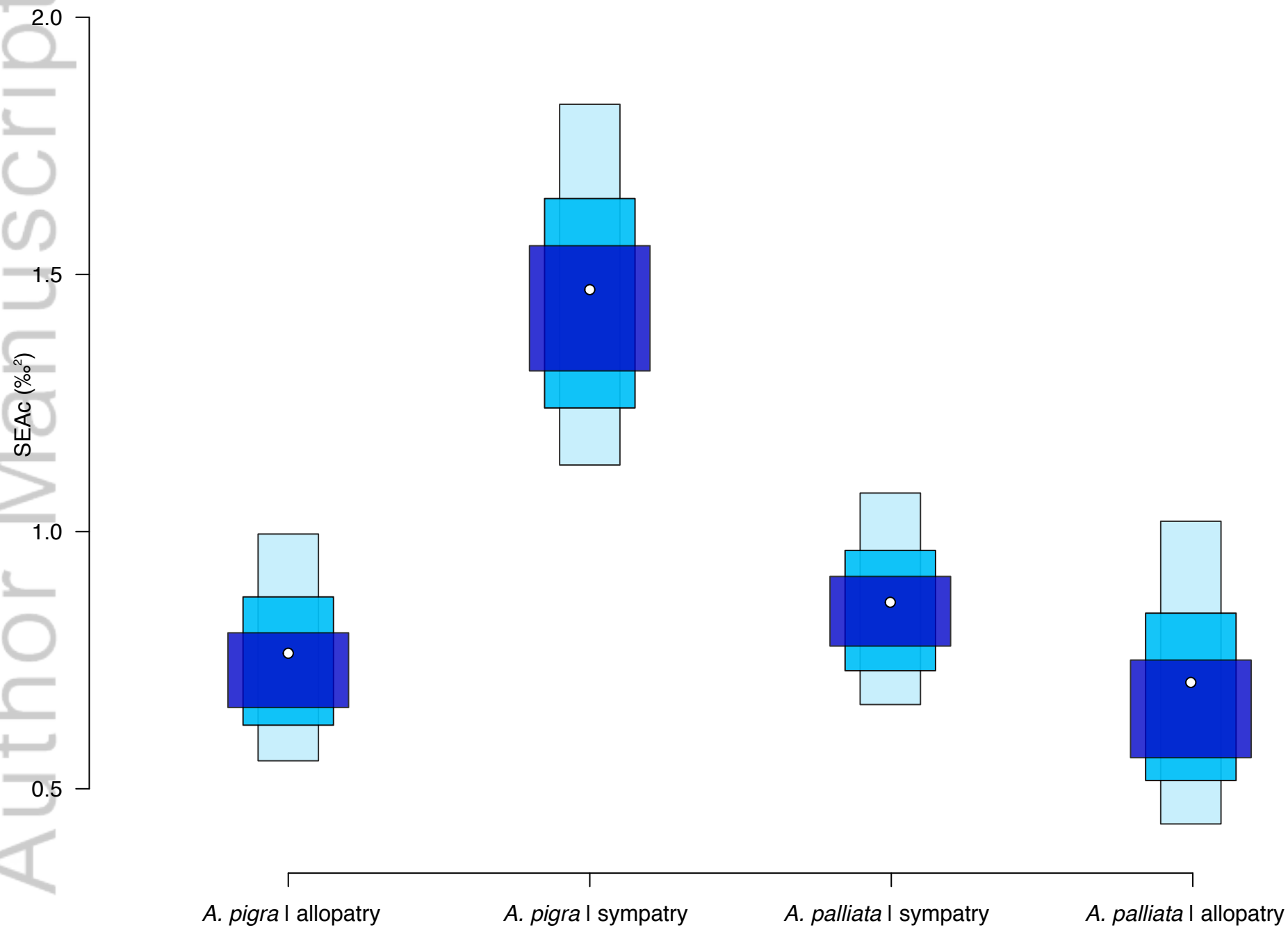


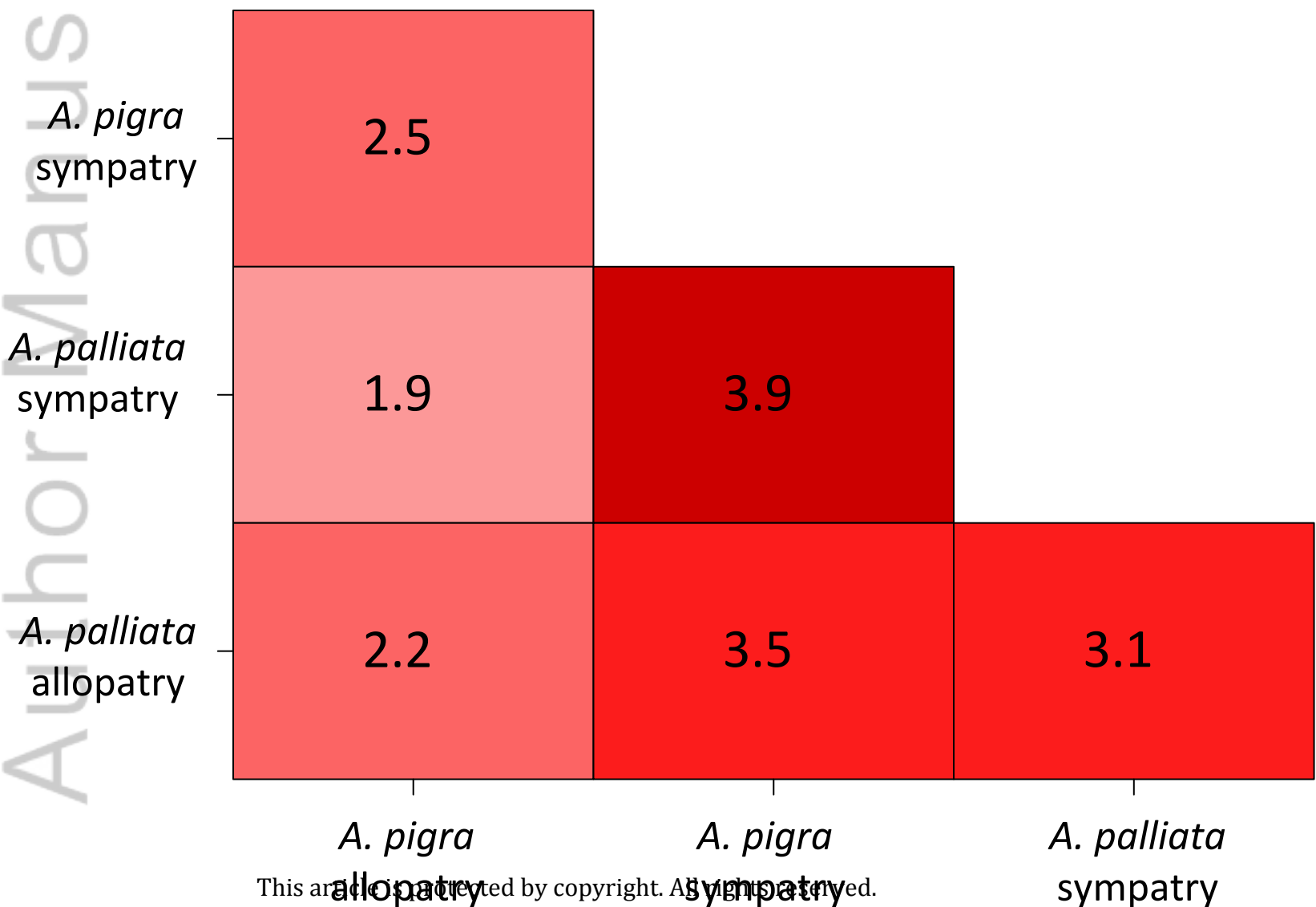
ajpa\_24028\_figure 1.eps



*A. pigra* | allopatry      *A. pigra* | sympatry      *A. palliata* | sympatry      *A. palliata* | allopatry









## Tables

**TABLE 1.** Hair stable isotopic values from two howler monkey species living in allopatry and in sympatry in southern Mexico and Guatemala.

Isotopic niche attributes	<i>Alouatta pigra</i>		<i>Alouatta palliata</i>	
	Allopatry	Sympatry	Sympatry	Allopatry
	<i>N</i> = 49	<i>N</i> = 64	<i>N</i> = 75	<i>N</i> = 12
Mean $\delta^{13}\text{C}$ (‰)	-24.5	-25.5	-25.5	-25.3
$\delta^{13}\text{C}$ range (‰)	-25.9–(-23.8)	-26.4–(-24.2)	-26.4–(-24.7)	-25.9–(-24.7)
Mean $\delta^{15}\text{N}$ (‰)	3.7	5.4	4.0	3.9
$\delta^{15}\text{N}$ range (‰)	2.6–5.0	3.4–8.0	2.6–5.9	2.5–4.9
SEA <sub>c</sub> <sup>a</sup>	0.76	1.46	0.86	0.70
SEA <sub>b</sub> <sup>a</sup>	0.75	1.44	0.85	0.67
95% C.I. <sup>a</sup>	0.55–0.97	1.11–1.84	0.66–1.06	0.42–1.01

<sup>a</sup> Standard ellipse areas corrected for small sample size (SEA<sub>c</sub>), Bayesian standard ellipse areas (SEA<sub>b</sub>), and SEA<sub>b</sub> 95% credible intervals were calculated with SIBER (see Jackson et al., 2011 for more details on these metrics).