

Acellular Dermal Matrix for root coverage procedures. 9-year assessment of treated isolated gingival recessions and their adjacent untreated sites

Shayan Barootchi*, DMD, Lorenzo Tavelli *, DDS, Riccardo Di Gianfilippo *, DDS, Robert Eber *, DDS, MS, Martina Stefanini †, DDS, PhD, Giovanni Zucchelli *†, DDS, PhD, Hom-Lay Wang *, DDS, MS, PhD

*Department of Periodontics & Oral Medicine, University of Michigan School of Dentistry, Ann Arbor, MI, USA

† Department of Biomedical and Neuromotor Sciences, University of Bologna, Bologna, Italy

Corresponding author:

Hom-Lay Wang, DDS, MS, PhD

Department of Periodontics and Oral Medicine

University of Michigan School of Dentistry

1011 North University Avenue

Ann Arbor, Michigan 48109-1078, USA.

TEL: +1 (734) 763-3383

E-mail address: homlay@umich.edu

Word count (excluding references): 3778

Tables and figures: 1 Table and 3 Figures

Running title: Long-term use of ADM for root coverage

Key words: acellular dermis, gingival recession, tooth root, surgical flaps, follow-up study

One sentence summary: Both acellular dermal matrix types displayed some gingival recession relapse, while their adjacent untreated sites showed a much greater apical shift of the gingival margin.

Conflict of interest and source of funding: The authors do not have any financial interests, either directly nor indirectly, in the products or information listed in the paper.

This is the author manuscript accepted for publication and has undergone full peer review but has not been through the copyediting, typesetting, pagination and proofreading process, which may lead to differences between this version and the [Version of Record](#). Please cite this article as [doi: 10.1002/JPER.20-0310](https://doi.org/10.1002/JPER.20-0310).

This article is protected by copyright. All rights reserved.

Author Contributions:

S. Barootchi: Conception and design of the study; analysis, and interpretation of data; Initial and final drafting of the work; Final approval of the version to be published; accountable for all aspects of the work.

L. Tavelli: Design of the study, acquisition and interpretation of data, manuscript preparation and the initial draft, final review of the work; accountable for all aspects of the work.

Di Gianfilippo: Data acquisition and examination of clinical parameters at follow-up appointments; contribution to manuscript writing, critical review of the final draft, accountable for all aspects of the work.

R. Eber: Study design; data interpretation; final approval of the version to be published and critical review of the manuscript draft, and accountable for all aspects of the work.

M. Stefanini: Final approval of the version to be published, contribution to the writing and critical review of the drafted manuscript, and accountable for all aspects of the work.

G. Zucchelli: Contribution to the study design; data interpretation; final approval of the version to be published with critical manuscript review; and accountable for all aspects of the work.

H-L Wang: Design of the study; critical review of the draft and contribution to the writing of the manuscript; Final approval of the version to be published and accountable to the accuracy or integrity of the work.

Abstract

Background & Aim: The long-term outcomes acellular dermal matrix (ADM) for the treatment of isolated gingival recessions has not yet been evaluated. Thus, the aim of this study was to observe the root coverage outcomes of coronally advanced flap (CAF) with ADM over time, and compare them with their adjacent untreated sites.

Methods: Twelve patients (from 20) were available at the 9-year recall. Clinical parameters (Recession depth (RECD), mean root coverage (mRC), keratinized tissue width (KTW) and gingival thickness (GT)) were evaluated and compared with the 1-year results, and the ADM-adjacent untreated sites (on mesial and distal) via mixed-modeling regression analyses.

Result: From 1 to 9 years, the ADM-treated isolated recessions showed a relapse from 77% to 62% mRC ($p < 0.05$). A similar pattern towards apical shift of the gingival margin was noticed for the ADM-adjacent untreated sites without baseline recession. However, ADM-adjacent untreated sites which had presented with recession at baseline but were not treated showed a significantly more apical shift of the gingival margin (almost 2 folds). A significant increase in KTW was noted for all sites.

Baseline $KTW \geq 2$ mm was a significant predictor for the stability of the gingival margin at the ADM-treated, and the ADM-adjacent sites with baseline recession.

Conclusions: ADM-treated sites displayed recession relapse from 1 to 9 years. The untreated adjacent sites with a recession at baseline, showed a higher apical displacement of the gingival margin compared to the ADM-treated sites, and ADM-adjacent sites without a recession at baseline.

1. Introduction

The long-lasting surgical outcomes obtained following a periodontal procedure has increasingly become a topic of interest among clinicians, patients and across the scientific community¹⁻⁴. In a recent study, Cortellini et al. demonstrated that the superiority of periodontal regeneration over traditional access flap surgery is maintained over 20 years¹. While a clear definition for “long-term” concerning root coverage procedures is not yet defined in the literature, a systematic review evaluating the progression of untreated gingival recessions (GRs) defined “long-term” studies those that had report outcomes at ≥ 24 months⁵, and another recent review defined long-term for those with a follow-up reaching at least 5 years⁶.

Clinical studies have also reported the outcomes of root coverage procedures at 3 and 5 years, referring to their period of observation as “long-term” as well^{7,8}. Recently published follow-up studies of randomized clinical trials however, have also evaluated the behavior of GRs after a minimum follow-up of 10 years^{2-4,9,10}. This raises the question whether studies with a shorter follow-up should still be considered in the long-term range.

The most investigated surgical technique for a root coverage procedure is the coronally advanced flap (CAF), whether with or without a connective tissue graft (CTG)^{9,11-13}. Therefore, it does not come as a surprise that many long-term follow-up studies have reported the outcomes of CAF and CAF + CTG²⁻⁴. However, in this era in which several CTG alternatives such as the acellular dermal matrix (ADM) and the collagen matrix, have also been introduced for minimizing patient discomfort and reducing the risk of complications at the donor site¹⁴⁻¹⁶, limited data are available regarding the long-term behavior of such graft substitutes¹⁷.

A recent study showed a significant relapse in the levels of the gingival margin over a period of 12 years for multiple GRs treated with ADM¹⁰. These results were in line with the drop in the mean root coverage shown by other authors when CAF alone, without a graft material had been performed^{3,4}. On the contrary, CTG-treated sites have displayed less susceptibility towards relapse of the gingival margin over time^{4,9,18}. Additionally, when evaluating multiple adjacent GRs, it was suggested that not only do they pose more challenges in their treatment compared to single

recessions^{19,20}, but they are also more prone to recession relapse over time, as an entire quadrant of GRs may likely be due to a traumatic brushing habit that may be reassumed over time^{21,22}.

Therefore, whether treated GRs with CAF + ADM maintain their obtained results over a long period of time remains unknown. Moreover, while the progression/development of GRs has been documented overtime^{5,23,24}, and even compared with contralateral sites receiving a free gingival graft (FGG)²⁵⁻²⁷, no study has yet investigated the long-term behavior of the gingival margin of untreated teeth adjacent to those that received a root coverage procedure with ADM.

With this premise, the aim of the present article was to evaluate the long-term clinical and patient-related outcomes of GRs treated with CAF + ADM compared to their adjacent untreated sites and to investigate any possible factors that may have impacted the stability of the gingival margin.**2.**

Materials and Methods

2.1 Study design

The present study was designed as a follow-up investigation in which patients from the Michigan Center that participated in a previous multicenter randomized clinical trial (RCT) conducted from November 2009 to December 2010²⁸, were invited for re-examination. Details of the study protocol, inclusion and exclusion criteria, data collection and surgical intervention have been thoroughly described in the original article²⁸ (ClinicalTrials.gov Identifier NCT00881959). Briefly, patients presenting with a Miller class I or II²⁹ GR defect ≥ 2 mm, located on the facial aspect of a maxillary incisor, canine or premolar were recruited and randomly assigned to either receive CAF + freeze-dried acellular dermal matrix (FDADM) ‡ or CAF + solvent-dehydrated acellular dermal matrix (SDADM) §.

Participants were aged ≥ 18 years, able to understand and comply with all the instructions and had to maintain good oral hygiene. Previous surgeries in the study area within 12 months, antibiotic use exceeding 2 weeks duration within the past 3 months, allergy to any of the study materials and tobacco use within the previous year were among the exclusion criteria. The protocol of the follow-up study was approved by the Western Institutional Review Board (HUM00146261) and is in full accordance with the Helsinki Declaration of 1975, as revised in 2000. Informed consents were obtained from all subjects who participated in this study.

2.2 Intervention

The patients were randomized into either of the two ADM groups prior to the surgery as the rehydration process for both ADM materials had to be initiated before the surgical procedure. The patients were not aware of which treatment they had been assigned to or had received. Each study

participant received full mouth supragingival scaling, polishing and oral hygiene instructions 2 months before the scheduled surgery, and patients were instructed to maintain an optimal toothbrushing technique to correct wrong brushing habits related to the etiology of the GR.

All surgical procedures that were conducted at the Michigan center were performed at the School of Dentistry, University of Michigan, Ann Arbor, by two experienced operators (H.L.W. and R.E.) following a previously described protocol and strict calibration sessions³⁰. Briefly, two diverging vertical releasing incisions were performed at the mesial and distal line angles of the tooth with the recession, starting at a distance equal to the recession depth plus 1 mm from the adjacent papilla tip. A full-thickness muco-periosteal flap was then elevated beyond the mucogingival junction. Adjacent gingival papillae were de-epithelialized using a scalpel blade. The exposed root was planed with rotary instruments and 24% EDTA gel³¹ was applied for 2 minutes. Periosteal scoring was performed for obtaining a tension-free flap. The rehydrated ADM (FDADM/SDADM) was then trimmed to cover the exposed root 3 mm beyond the lateral and apical root surfaces. The ADM graft was sutured at the level of the cemento-enamel junction (CEJ) using a single 5-0 fast-absorbing polyglycolic acid sling suture. The overlying flap was then advanced to a level 1 – 2 mm coronal to the CEJ using the sling and tag suture technique as previously described^{30,32}. Post-operative instructions were provided for all subjects both verbally and in the written form. Post-operative medications included 600 mg ibuprofen over 6 to 8 hours, as needed, and 500 mg amoxicillin three times daily for 10 days, starting 1 hour before the surgery. After suture removal at 2 weeks, patients were instructed to resume an atraumatic brushing technique using a soft-bristle toothbrush. A session of clinical assessment, professional cleaning, with oral hygiene instructions, was performed at 1, 3, 6, and 12 months.

2.3 Study outcomes

The primary outcomes of the current follow-up study were to: 1) assess the long-term root coverage outcomes of isolated GRs treated with ADM, through comparing the clinical parameters at the 1-year follow-up to those obtained at the 9-year recall (changes in Rec, mRC, KTW, GT); and 2) compare the ADM-treated sites, to their adjacent untreated sites (mesial and distal to the treated tooth) in terms of changes in the levels of the gingival margin from the 1-year follow-up to the 9-year recall, to observe the absence or progression of recession at the untreated sites.

Additionally, we explored the presence of possible correlations between any of the collected variables and the stability of the levels of the gingival margin over time and assessed the gathered Patient-Reported Outcome Measures (PROMs).

Author Manuscript

2.4 Clinical measurements

RECD, pocket depth (PD), CAL, KTW and GT were collected as described in the original protocol at each treated site using a periodontal probe by a calibrated examiner (R.D.G.) who was blinded to the treatments performed. The calibration process was conducted with the senior authors who took part in the original RCT, prior to the scheduling of patients. Additionally, the original customized acrylic resin stents used in the initial study were utilized for obtaining the measurements at the 9-year recall. The gingival phenotype at each treated site was also compared to the contralateral and opposing sites using a color-coded probe ¶³³⁻³⁵, and patients were asked to fill out a questionnaire which included dichotomous questions and a self-evaluation form regarding the stability of their obtained results using a visual analogue scale (VAS) of 100 mm^{36,37}.

2.5 Data management and statistical analysis

The data from the original study at the 1-year follow-up, and the previous intermediate timepoints, as well as the newly gathered clinical measures at the 9-year recall and their corresponding baseline records were entered into a pre-fabricated spread sheet and coded by an individual author (L.T.). The ADM-treated sites regardless of the type of ADM preparation (FDADM/SDADM) were merged under the same treatment group of ADM²⁸.

The analyses were performed by a separate investigator with experience in biostatistics (S.B.) who had not participated in data collection or any of the measurements at the recall appointments and remained blinded to the original raw data. Descriptive statistics were used to present the obtained data as means and standard deviations (SD) for continuous variables (RECD, RECw, PD, CAL, KTW, GT). CRC was expressed as a percentage of sites that achieved a complete root coverage at 1 year and those that maintained their complete coverage at the 9-year timepoint. To assess statistically significant changes strictly in the ADM-treated teeth for RECD, KTW, GT and mRC, paired t-tests were utilized.

To evaluate and compare the changes in the ADM-treated sites relative to their untreated adjacent sites (mesial and distal) from the 1-year recall to the 9-year timepoint, we used mixed-modeling regression analyses. The models accounted for the fact that a single patient contributed to 3 sites (1 ADM-treated, and 2 untreated adjacent mesial and distal sites). The following mathematical formula represents the model where Rec_{itj} is the recession depth (representing the level of the gingival margin in mm) for tooth j in subject i at time t , CR_{ij} is the indicator that tooth j in subject i is untreated with a recession at baseline, CN_{ij} is the indicator that tooth j in subject i is

untreated with no recession at baseline, and AL_{ij} as the indicator that tooth j in subject i had been treated using FDADM (to control for any potential influence of the type of ADM):

$Rec_{i1j} = \beta_0 + \beta_1 Rec_{i0j} + \beta_2 CR_{ij} + \beta_3 CN_{ij} + \beta_4 AL_{ij} + \theta_i + \epsilon_{ij}$ The random effect θ_i represents unique subject effects and the error term ϵ_{ij} represents unexplained variation. Possible correlations between the 1- to 9-year changes in the levels of the gingival margin and the gathered patient-reported responses were also explored.

Line charts were produced to display the changes in the RECD and KTW over time with error bars representing standard deviations. Confidence intervals (CI) were produced and a p value threshold of 0.05 was set for statistical significance. The analyses were performed using the lme4³⁸, dplyr³⁹, and stats⁴⁰ packages in Rstudio #.

3. Results

From the original twenty patients that completed the study at 1 year (eleven females and nine males, with a mean age of 42.5 ± 12 years), twelve (7 females, 5 males) were available for the 9-year recall, demonstrating a response rate of 60% (7 in the FDADM-, and 5 in the SDADM-originally treated groups). Six of the patients received periodic professional cleaning or supportive periodontal therapy, at least twice a year at the University of Michigan School of Dentistry, and 6 were maintained at private practices.

3.1 Clinical outcomes of Acellular Dermal Matrix

Table 1 displays the root coverage outcomes of the ADM-treated teeth from baseline, to the 1-year, and the 9-year recall. From the 1-year timepoint to the 9-year recall, on average, the ADM-treated sites presented with an increase RECD of 0.37 ± 0.52 mm ($p=0.03$), corresponding to $14.86 \pm 20.19\%$ decrease in mRC ($p=0.02$) (from 76.94% at 1 year to 62.08% at the 9-year recall). There had been five cases with CRC at 1 year, which was reduced to four at the 9-year recall. Additionally, there was an increase KTW of 0.71 ± 0.39 mm ($p<0.01$), and GT seemed to have remained stable since the 1-year results (mean changes of 0.08 ± 0.51 , $p=0.58$). When phenotypic changes were evaluated using a color-coded probe, at the 9-year recall, 83.3% of the ADM-treated sites (10 of 12) showed an increase in tissue thickness compared to their contralateral, opposing, and adjacent sites.

3.2 Comparison of the ADM-treated sites, to their adjacent untreated sites

The changes in the levels of the gingival margin and amount of KTW for the ADM-treated sites, and their immediately adjacent untreated sites (mesial and distal) are presented in figure 1.

Sixteen of the twenty-four ADM-adjacent sites had a recession at baseline which were not treated, amounting to an average 1.4 ± 0.68 mm in RECd. The recession at these sites had remained qualitatively unchanged until the 1-year timepoint. Additionally, 8 of the ADM-adjacent sites did not have a baseline recession, which also remained unchanged until the 1-year timepoint.

Overall at the 9-year recall, the ADM-adjacent untreated sites presented with 2.25 ± 1.26 mm RECd (2.91 ± 0.89 mm for the adjacent untreated sites with baseline recession, and 0.93 ± 0.77 mm at the adjacent sites which did not have a gingival recession at baseline) (Figures 2, and 3). When comparing the changes in the levels of the gingival margin among the 3 groups of: ADM, ADM-adjacent sites with, and without baseline recession, the mixed-modeling regression analysis demonstrated that with ADM-treated sites as the reference, the changes at the untreated sites with baseline recession (1.28 mm (95% CI[0.59, 1.97], $p=0.001$)) was significantly more than those without a recession at baseline (0.47 mm (95% CI[-0.31, 1.25], $p=0.23$)). Additionally, RECd at 1 year presented as a significant predictor in the model (0.78 mm (95% CI[0.39, 1.16], $p<0.001$)) for the 9-year outcomes. The model illustrated that despite an average apical migration in the level of the gingival margin at all sites from 1 to 9 years, this apical shift was significantly more, and almost 2 folds at sites which had presented with a gingival recession at baseline but were not treated (model estimates of 1.78 mm, versus 0.96 mm for the ADM-adjacent sites with, and without recession at baseline). Additionally, the changes in the gingival margin for the adjacent sites without baseline recession did not significantly differ from the ADM-treated sites.

Furthermore, despite a significant increase in KTW throughout time at all sites, when testing its effect at baseline and its interaction with the different groups, it was shown that KTW of <2 mm at baseline was significantly associated to RECd changes from 1 to 9 years for the ADM-treated sites (-0.4 (95% CI[-0.79, -0.02], $p=0.02$)), and the untreated adjacent sites that presented with a baseline recession (-0.64 (95% CI[-1.27, -0.01], $p=0.01$)).

3.3 Patient-reported outcomes at the 9 years recall

Outcomes from the gathered responses of the patient questionnaires indicated a high satisfaction rate for the treatment of ADM, represented with VAS scores of 8.81 ± 1 . Additionally, except for one patient that experienced post-surgical hematoma, all other patients stated that they would be willing to undergo the treatment again if needed (91.6%). Lastly, 40% of the subjects who presented with recession relapse (increase in RECd) at the 9-year recall were able to identify the apical shift of their gingival margin

4. Discussion

The current article presents the 9-year outcomes of ADM-treated isolated GRs, and their untreated adjacent sites. This to the best of our knowledge, has not been reported yet in the literature. Several authors have assessed the long-term outcomes of untreated GRs²³⁻²⁶. A systematic review concluded that untreated GRs have a high tendency (78.1%) to progress over time (mean monitoring period of 8.9 years), with an incidence of 79.3% new recession defects⁵. Similarly, at 9 years, we observed an incidence of 75% for new GRs in the untreated sites, while no changes in the levels of the gingival margin had been observed at 1 year.

Regarding the progression of untreated GRs, we found that only 6.3% of sites remained stable at 9 years, while 93.7% of sites showed further apical shift in their gingival margin. The reason for the higher recession progression found in our study compared to the literature (ranging approximately from 23% to 87.4% in studies with at least 10 years of follow-up)^{5, 24, 25} is open to speculations. One possible explanation for this difference could be resuming traumatic brushing techniques in areas with a thin gingival phenotype. Indeed, the ADM-treated sites showed a significantly lower relapse of the gingival margin compared to their adjacent untreated areas which had a recession at baseline. This may be due to the increased marginal soft tissue thickness that can be a protective factor from recession recurrence even in patients that may not be able to correct their traumatic brushing habits^{10, 41}. Additionally, a thin gingival phenotype has also been recognized as one of the most important etiological factors for the development of gingival recessions^{42, 43}. Interestingly, the adjacent untreated sites with previous GRs at baseline showed a greater apical shift than sites without recession at baseline. It is reasonable to assume that at a site with a recession defect, the likelihood of having predisposing or precipitating factors⁴⁴ for the progression of GR is higher than sites without a recession. Among those, our analyses demonstrated that for sites presenting with an initial GR, having a baseline KTW ≥ 2 mm was a positive predictor for the stability of the gingival margin, which is in line with previous literature^{3, 10, 18}.

Agudio and coworkers showed that FGG is able to maintain the level of the gingival margin over time or to provide some improvements (creeping attachment), compared to untreated contralateral sites that were associated with an increased recession depth or development of new GRs²⁵⁻²⁷. The present article further confirms the advantage of adding a graft over untreated sites in terms of gingival margin stability is also valid for root coverage procedures with ADM.

Nonetheless, it has to be mentioned that ADM-treated sites showed a relapse of the gingival margin from 1 to 9 years. This is in line with the literature that shows that the recurrence of GR is a common

finding^{10,45,46}. A recent network meta-analysis from our group addressed the stability of root coverage outcomes over time, by comparing different surgical techniques head-to-head and analyzing potential influential factors, accounting for the effect of time in every comparison⁴⁷. Interestingly, all root coverage procedures (flap alone, guided tissue regeneration, ADM-, collagen matrix- and enamel matrix derivative-based approaches), except CTG, were found to have a tendency towards the apical shift of the gingival margin. The CTG was the only approach that showed a trend towards stability or even improvement in the level of the gingival margin over time⁴⁷.

It has been suggested that the ADM is the graft material with the most similar outcomes to that of the CTG for root coverage procedures^{41,48}. Harris was the first to report a significant relapse of ADM over time (up to 4 years) in the treatment of single and multiple gingival recessions, while finding short-term results similar to the CTG⁴⁹. Nevertheless, a 5-year randomized clinical trial has shown a significant relapse in CRC and RECd in both ADM and CTG groups⁴⁶, and another 5-year study reported greater recession reduction and keratinized tissue width obtained in the CTG group, with comparable gain in tissue thickness⁵⁰. A 12-year follow-up study showed a significant relapse of the gingival margin following ADM, with a drop in the mRC from approximately 89% at 6 months to about 65% at the 12-year recall using ADM¹⁰, while the present study found a relatively lower drop in the mRC. This may have been due to different treated conditions (multiple vs single gingival recessions), flap design (tunnel or envelope CAF vs CAF with vertical incisions), the different follow-up (12 vs 9 years) and the mRC obtained at 6-12 months (89% vs 76% in the present study)¹⁰.

Lastly, our results also show an overall increased KTW from 1 to 9 years in both the ADM-treated and adjacent untreated sites. It can be speculated that this is due to the tendency of the mucogingival line to regain its genetically predetermined position^{43,51}. In addition, it was observed that ADM resulted in an increased GT, as also corroborated by the thickening in the gingival phenotype in 84% of cases compared to contralateral, opposite and the adjacent sites. A similar increase in GT was also found in a previous article, where it was demonstrated that having GT ≥ 1.2 mm after 6 months was a predictor for the stability of the gingival margin¹⁰. Among the limitations of the present study, the relatively high number of drop-out patients at the 9-year recall can be mentioned, which may have limited the power of our analyses, and hindered a direct statistical comparison between the two ADM groups. Furthermore, although masked and calibrated, a different examiner from the one in the original study performed the measurements at the 9-year recall. Nonetheless this change in the examiners is inherent to the long-term follow-up nature of such studies^{4,52}. In addition, it would have been beneficial had we had information on GT at baseline

for the adjacent untreated sites for further assessment of the effect of GT on the progression of recessions and its role in stability. The method for assessing gingival thickness may also have some limitations, including the possibility in needle bending and patient discomfort, which can be reduced with the use of contemporary non-invasive and more accurate technologies⁵³. Lastly, it should be noted that although no changes in recession depth at the untreated sites were noticed at the 1-year recall, originally some of the vertical releasing incisions had been performed close to the gingival margin of the untreated sites which could have induced a local trauma. This, and the fact that the original RCT only recruited maxillary gingival recessions may limit the generalizability of our results and thus the conclusions of from this report should be interpreted with caution.

Author Manuscript

5. Conclusions

Within its limitations, the present investigation demonstrated that ADM-treated sites, while displaying a certain amount of recession relapse, presented a greater stability of the gingival margin compared to untreated adjacent sites with initial recession, from 1 to 9 years. Baseline keratinized tissue width ≥ 2 mm was a significant positive predictor for the stability of the gingival margin in the ADM group and in the untreated ADM-adjacent sites that already presented with an initial recession defect.

Footnotes

‡ Alloderm, BioHorizons, Birmingham, AL

§ Puros Dermis, Zimmer Dental, Carlsbad, CA

PCP UNC 15, Hu-Friedy, Chicago, USA

¶ Colorvue Biotype probe, Hu-Friedy, Chicago, USA

Rstudio Version 1.1.383, Rstudio, Inc., Massachusetts, USA

Acknowledgment(s)

The current study was partially supported by the University of Michigan Periodontal Graduate Student Research Fund. The authors would like to thank Hu-Friedy (Chicago, IL, USA) for generously providing the biotype probes. The Original randomized controlled trial was conducted with a research grant provided by Zimmer Dental Inc (currently Zimmer/Biomet 3i; Palm Beach, FL). Dr. Wang receives honorarium for speaking engagements with BioHorizons (Birmingham, AL) and Zimmer Biomet 3i. The other authors did not declare any conflict of interest.

REFERENCES

1. Cortellini P, Buti J, Pini Prato G, Tonetti MS. Periodontal regeneration compared with access flap surgery in human intra-bony defects 20-year follow-up of a randomized clinical trial: tooth retention, periodontitis recurrence and costs. *J Clin Periodontol* 2017;44:58-66.
2. Pini Prato GP, Franceschi D, Cortellini P, Chambrone L. Long-term evaluation (20 years) of the outcomes of subepithelial connective tissue graft plus coronally advanced flap in the treatment of maxillary single recession-type defects. *J Periodontol* 2018;89:1290-1299.

3. Pini Prato GP, Magnani C, Chambrone L. Long-term evaluation (20 years) of the outcomes of coronally advanced flap in the treatment of single recession-type defects. *J Periodontol* 2018;89:265-274.
4. Rasperini G, Acunzo R, Pellegrini G, et al. Predictor factors for long-term outcomes stability of coronally advanced flap with or without connective tissue graft in the treatment of single maxillary gingival recessions: 9 years results of a randomized controlled clinical trial. *J Clin Periodontol* 2018;45:1107-1117.
5. Chambrone L, Tatakis DN. Long-Term Outcomes of Untreated Buccal Gingival Recessions: A Systematic Review and Meta-Analysis. *J Periodontol* 2016;87:796-808.
6. Chambrone L, Ortega MAS, Sukekava F, et al. Root coverage procedures for treating single and multiple recession-type defects: An updated Cochrane systematic review. *J Periodontol* 2019;90:1399-1422.
7. Zucchelli G, Mounssif I, Mazzotti C, et al. Coronally advanced flap with and without connective tissue graft for the treatment of multiple gingival recessions: a comparative short- and long-term controlled randomized clinical trial. *J Clin Periodontol* 2014;41:396-403.
8. Jepsen K, Stefanini M, Sanz M, Zucchelli G, Jepsen S. Long-Term Stability of Root Coverage by Coronally Advanced Flap Procedures. *J Periodontol* 2017;88:626-633.
9. Barootchi S, Tavelli L, Di Gianfilippo R, et al. Long-term assessment of root coverage stability using connective tissue graft with or without an epithelial collar for gingival recession treatment. A 12-year follow-up from a randomized clinical trial. *J Clin Periodontol* 2019;46:1124-1133.
10. Tavelli L, Barootchi S, Di Gianfilippo R, et al. Acellular dermal matrix and coronally advanced flap or tunnel technique in the treatment of multiple adjacent gingival recessions. A 12-year follow-up from a randomized clinical trial. *J Clin Periodontol* 2019;46:937-948.
11. Tavelli L, Barootchi S, Nguyen TVN, Tattan M, Ravida A, Wang HL. Efficacy of tunnel technique in the treatment of localized and multiple gingival recessions: A systematic review and meta-analysis. *J Periodontol* 2018;89:1075-1090.
12. Zucchelli G, Tavelli L, McGuire MK, et al. Autogenous soft tissue grafting for periodontal and peri-implant plastic surgical reconstruction. *J Periodontol* 2020;91:9-16.
13. Zucchelli G, Tavelli L, Barootchi S, et al. The influence of tooth location on the outcomes of multiple adjacent gingival recessions treated with coronally advanced flap: A multicenter re-analysis study. *J Periodontol* 2019;90:1244-1251.
14. Tavelli L, Asa'ad F, Acunzo R, Pagni G, Consonni D, Rasperini G. Minimizing Patient Morbidity Following Palatal Gingival Harvesting: A Randomized Controlled Clinical Study. *Int J Periodontics Restorative Dent* 2018;38:e127-e134.

15. Tavelli L, Barootchi S, Ravida A, Oh TJ, Wang HL. What Is the Safety Zone for Palatal Soft Tissue Graft Harvesting Based on the Locations of the Greater Palatine Artery and Foramen? A Systematic Review. *J Oral Maxillofac Surg* 2018;77:271.e1-271.e9
16. Stefanini M, Mounssif I, Barootchi S, Tavelli L, Wang HL, Zucchelli G. An exploratory clinical study evaluating safety and performance of a volume-stable collagen matrix with coronally advanced flap for single gingival recession treatment. *Clin Oral Investig* 2020. doi:10.1007/s00784-019-03192-5.
17. Tavelli L, McGuire MK, Zucchelli G, et al. Extracellular matrix-based scaffolding technologies for periodontal and peri-implant soft tissue regeneration. *J Periodontol* 2020;91:17-25.
18. Pini Prato GP, Franceschi D, Cortellini P, Chambrone L. Long-term evaluation (20 years) of the outcomes of subepithelial connective tissue graft plus coronally advanced flap in the treatment of maxillary single recession-type defects. *J Periodontol* 2018;89:1290-1299.
19. Graziani F, Gennai S, Roldan S, et al. Efficacy of periodontal plastic procedures in the treatment of multiple gingival recessions. *J Clin Periodontol* 2014;41 Suppl 15:S63-76.
20. Zucchelli G, Tavelli L, Barootchi S, et al. The influence of tooth location on the outcomes of multiple adjacent gingival recessions treated with coronally advanced flap: A multicenter Re-Analysis study. *J Periodontol* 2019;90:1244-1251.
21. Zucchelli G, Mounssif I. Periodontal plastic surgery. *Periodontol 2000* 2015;68:333-368.
22. Cairo F. Periodontal plastic surgery of gingival recessions at single and multiple teeth. *Periodontol 2000* 2017;75:296-316.
23. Daprile G, Gatto MR, Checchi L. The evolution of buccal gingival recessions in a student population: a 5-year follow-up. *J Periodontol* 2007;78:611-614.
24. Matas F, Sentis J, Mendieta C. Ten-year longitudinal study of gingival recession in dentists. *J Clin Periodontol* 2011;38:1091-1098.
25. Agudio G, Nieri M, Rotundo R, Franceschi D, Cortellini P, Pini Prato GP. Periodontal conditions of sites treated with gingival-augmentation surgery compared to untreated contralateral homologous sites: a 10- to 27-year long-term study. *J Periodontol* 2009;80:1399-1405.
26. Agudio G, Cortellini P, Buti J, Pini Prato G. Periodontal Conditions of Sites Treated With Gingival Augmentation Surgery Compared With Untreated Contralateral Homologous Sites: An 18- to 35-Year Long-Term Study. *J Periodontol* 2016;87:1371-1378.
27. Agudio G, Chambrone L, Pini Prato G. Biologic Remodeling of Periodontal Dimensions of Areas Treated With Gingival Augmentation Procedure: A 25-Year Follow-Up Observation. *J Periodontol* 2017;88:634-642.

28. Wang HL, Romanos GE, Geurs NC, Sullivan A, Suarez-Lopez Del Amo F, Eber RM. Comparison of two differently processed acellular dermal matrix products for root coverage procedures: a prospective, randomized multicenter study. *J Periodontol* 2014;85:1693-1701.
29. Miller PD, Jr. A classification of marginal tissue recession. *Int J Periodontics Restorative Dent* 1985;5:8-13.
30. Huang LH, Wang HL. Sling and tag suturing technique for coronally advanced flap. *Int J Periodontics Restorative Dent* 2007;27:379-385.
31. Barootchi S, Tavelli L, Ravida A, Wang CW, Wang HL. Effect of EDTA root conditioning on the outcome of coronally advanced flap with connective tissue graft: a systematic review and meta-analysis. *Clin Oral Investig* 2018;22:2727-2741.
32. Tavelli L, Barootchi S, Ravida A, Suarez-Lopez Del Amo F, Rasperini G, Wang HL. Influence of suturing technique on marginal flap stability following coronally advanced flap: a cadaver study. *Clin Oral Investig* 2019;23:1641-1651.
33. Rasperini G, Acunzo R, Cannalire P, Farronato G. Influence of Periodontal Biotype on Root Surface Exposure During Orthodontic Treatment: A Preliminary Study. *Int J Periodontics Restorative Dent* 2015;35:665-675.
34. Kloukos D, Koukos G, Doulis I, Sculean A, Stavropoulos A, Katsaros C. Gingival thickness assessment at the mandibular incisors with four methods: A cross-sectional study. *J Periodontol* 2018;89:1300-1309.
35. Rasperini G, Codari M, Paroni L, et al. The Influence of Gingival Phenotype on the Outcomes of Coronally Advanced Flap: A Prospective Multicenter Study. *Int J Periodontics Restorative Dent* 2020;40:e27-e34.
36. Tonetti MS, Fourmoussis I, Suvan J, et al. Healing, post-operative morbidity and patient perception of outcomes following regenerative therapy of deep intrabony defects. *J Clin Periodontol* 2004;31:1092-1098.
37. Cortellini P, Tonetti M, Baldi C, et al. Does placement of a connective tissue graft improve the outcomes of coronally advanced flap for coverage of single gingival recessions in upper anterior teeth? A multi-centre, randomized, double-blind, clinical trial. *J Clin Periodontol* 2009;36:68-79.
38. Bates D, Maechler M, Bolker B, Walker S. Fitting Linear Mixed-Effects Models Using lme4. *Journal of Statistical Software* 2015;67:1-48.
39. Wickham H, Francois R, Henry L, Müller K. dplyr: A Grammar of Data Manipulation. R package version 0.7.4. 2017.
40. Team RC. R: A Language and Environment for Statistical Computing. In: R Foundation for Statistical Computing, 2019.

41. Chambrone L, Ortega MAS, Sukekava F, et al. Root coverage procedures for treating single and multiple recession-type defects: A Cochrane Systematic Review Updated. *J Periodontol* 2019;90:1399-1422.
42. Cortellini P, Bissada NF. Mucogingival conditions in the natural dentition: Narrative review, case definitions, and diagnostic considerations. *J Periodontol* 2018;89 Suppl 1:S204-S213.
43. Barootchi S, Tavelli L, Zucchelli G, Giannobile WV, Wang HL. Gingival phenotype modification therapies on natural teeth: A network meta-analysis. *J Periodontol* 2020. doi:10.1002/JPER.19-0715.
44. Fu JH, Su CY, Wang HL. Esthetic soft tissue management for teeth and implants. *J Evid Based Dent Pract* 2012;12:129-142.
45. Pini Prato G, Rotundo R, Franceschi D, Cairo F, Cortellini P, Nieri M. Fourteen-year outcomes of coronally advanced flap for root coverage: follow-up from a randomized trial. *J Clin Periodontol* 2011;38:715-720.
46. Moslemi N, Mousavi Jazi M, Haghghati F, Morovati SP, Jamali R. Acellular dermal matrix allograft versus subepithelial connective tissue graft in treatment of gingival recessions: a 5-year randomized clinical study. *J Clin Periodontol* 2011;38:1122-1129.
47. Tavelli L, Barootchi S, Cairo F, Rasperini G, Shedden K, Wang HL. The Effect of Time on Root Coverage Outcomes: A Network Meta-Analysis. *J Dent Res* 2019;98:1195-1203.
48. Chambrone L, Salinas Ortega MA, Sukekava F, et al. Root coverage procedures for treating localised and multiple recession-type defects. *Cochrane Database Syst Rev* 2018;10:CD007161.
49. Harris RJ. A short-term and long-term comparison of root coverage with an acellular dermal matrix and a subepithelial graft. *J Periodontol* 2004;75:734-743.
50. Kroiss S, Rathe F, Sader R, Weigl P, Schlee M. Acellular dermal matrix allograft versus autogenous connective tissue grafts for thickening soft tissue and covering multiple gingival recessions: a 5-year preference clinical study. *Quintessence Int* 2019;50:278-285.
51. Zucchelli G, De Sanctis M. Long-term outcome following treatment of multiple Miller class I and II recession defects in esthetic areas of the mouth. *J Periodontol* 2005;76:2286-2292.
52. McGuire MK, Scheyer ET, Nunn M. Evaluation of human recession defects treated with coronally advanced flaps and either enamel matrix derivative or connective tissue: comparison of clinical parameters at 10 years. *J Periodontol* 2012;83:1353-1362.
53. Barootchi S, Chan HL, Namazi SS, Wang HL, Kripfgans OD. Ultrasonographic characterization of lingual structures pertinent to oral, periodontal, and implant surgery. *Clin Oral Implants Res*

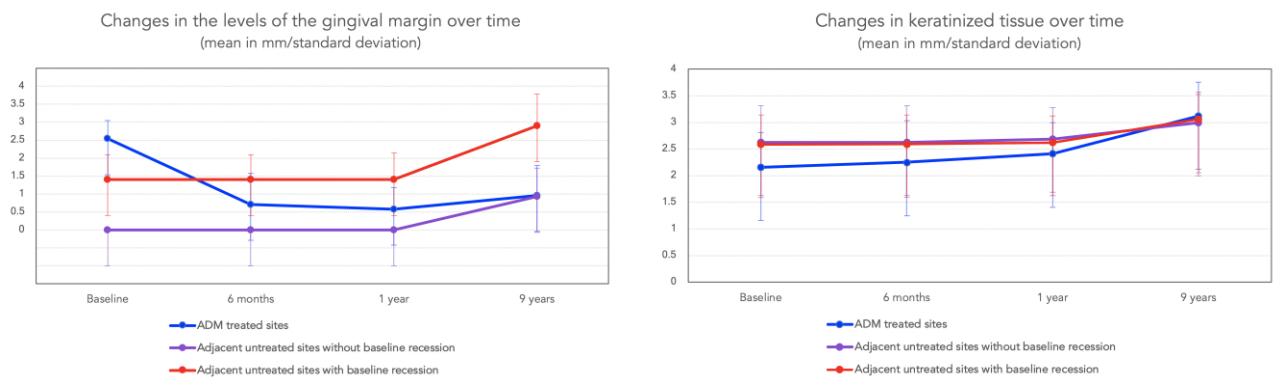


Figure 1. Changes in the levels of the gingival margin and keratinized tissue from pre-treatment (baseline), up to the 9-year recall for the ADM-treated sites, and their adjacent untreated sites.

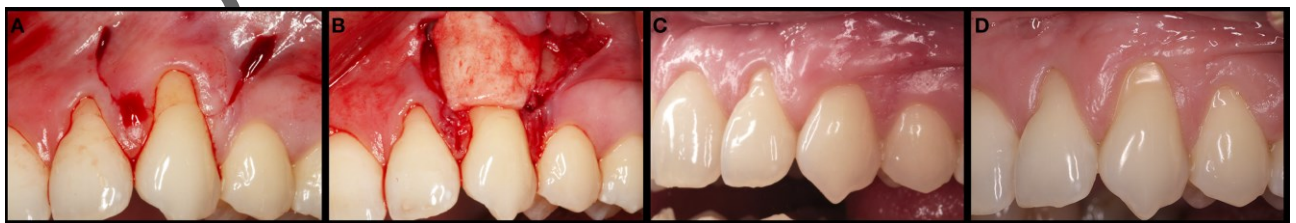


Figure 2. Root coverage outcomes of an isolated gingival recession treated with ADM. A) Baseline. B) Positioning of the ADM on the recipient bed. C) 1-year outcomes. D) 9-year outcomes. Note the relapse of the gingival margin in the ADM-treated sites and the apical shift of the gingival margin of the adjacent untreated teeth at the 9-year recall.

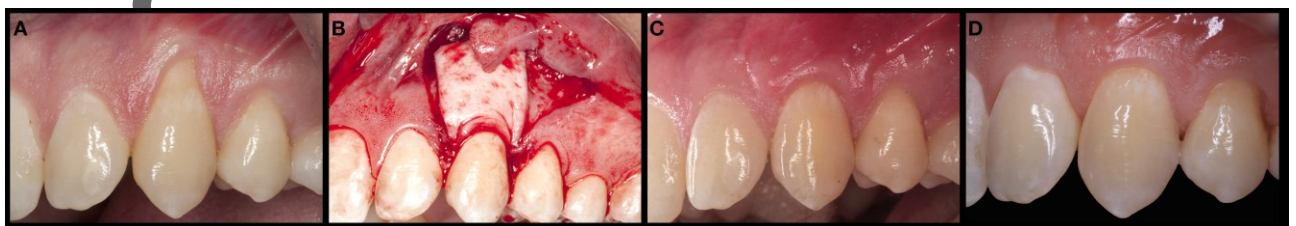


Figure 3. Root coverage outcomes of an isolated gingival recession treated with ADM. A) Baseline. B) Stabilization of the ADM on the root surface. C) 1-year outcomes. D) 9-year outcomes. Note the stability of the gingival margin at the ADM treated site from 1 to 9 years.

Table 1. Root coverage outcomes of ADM-treated sites at baseline, to the 1-, and 9-year recall.

Clinical parameter	Timepoint		
	Baseline (n=12)	1 year (n=12)	9 year (n=12)
RECD	2.54 ± 0.49	0.58 ± 0.59	0.95 ± 0.83
mRC		76.94 ± 22.75	62.08 ± 34.15
KTW	2.16 ± 0.65	2.41 ± 0.59	3.12 ± 0.64
PD	1.04 ± 0.25	1.37 ± 0.43	1.5 ± 0.52
CAL	3.58 ± 0.41	1.95 ± 0.86	2.45 ± 0.81
GT	1.33 ± 0.44	1.79 ± 0.39	1.87 ± 0.43

RECD, recession depth; mRC, mean root coverage; KTW, keratinized tissue width; PD, pocket depth; CAL, clinical attachment level; GT, gingival thickness