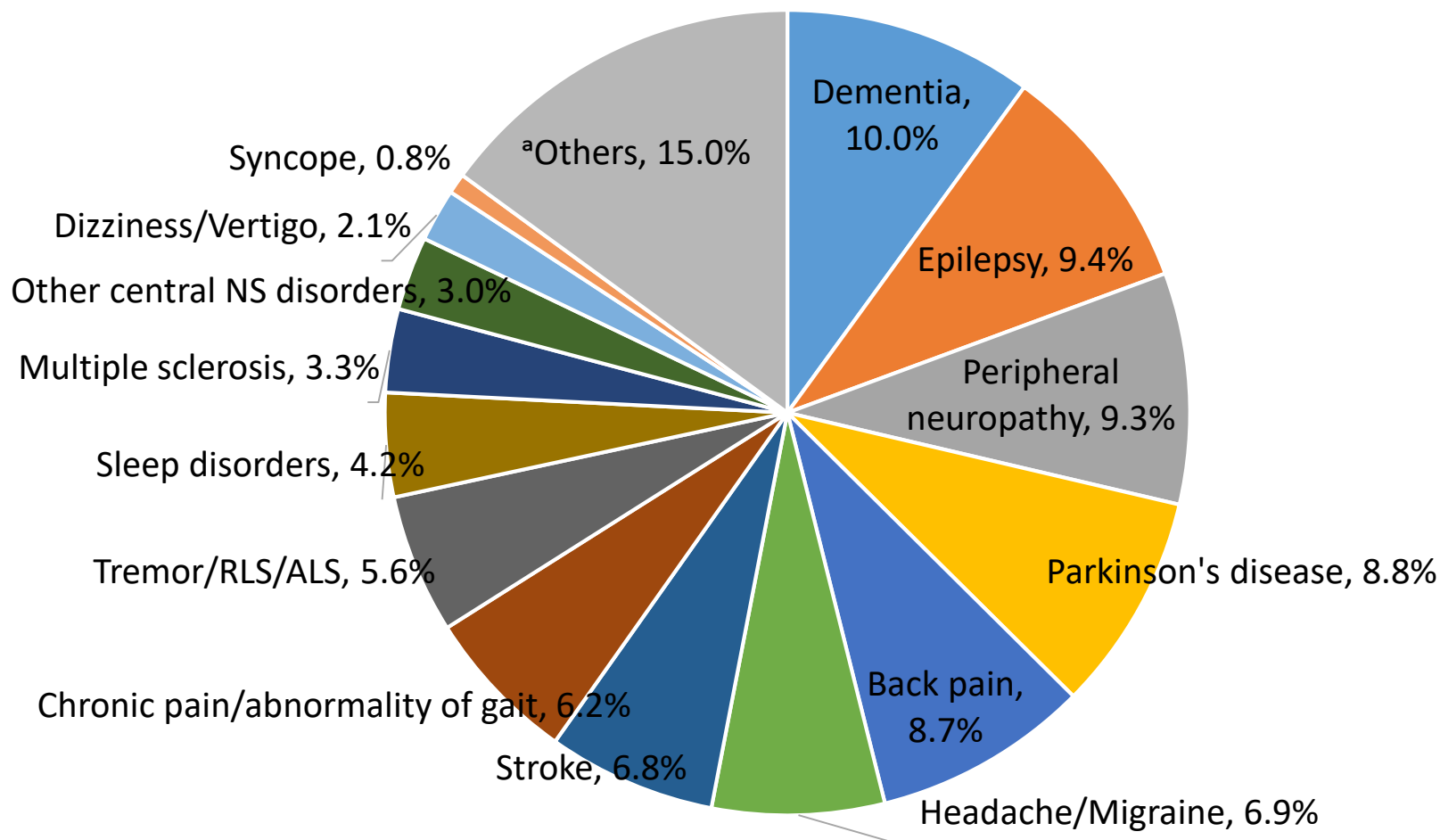
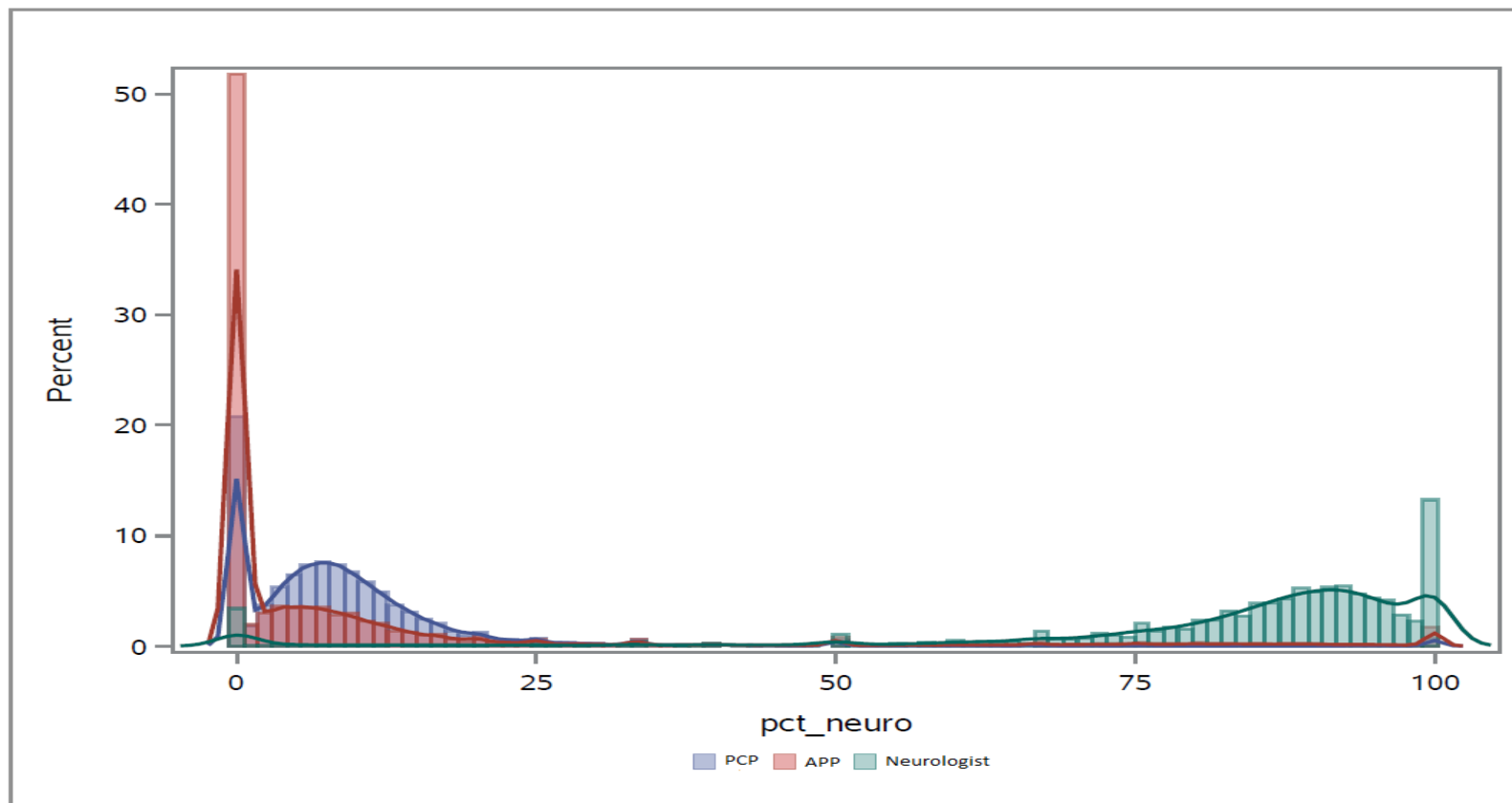


eFigure1. The distribution of diagnoses in all visits to Neurologists



^aOthers-included over 200 CCS diagnostic categories (e.g. other connective tissue disease, other CNS infection and myelitis, encephalitis, blindness and vision defects, diabetes mellitus with complications)

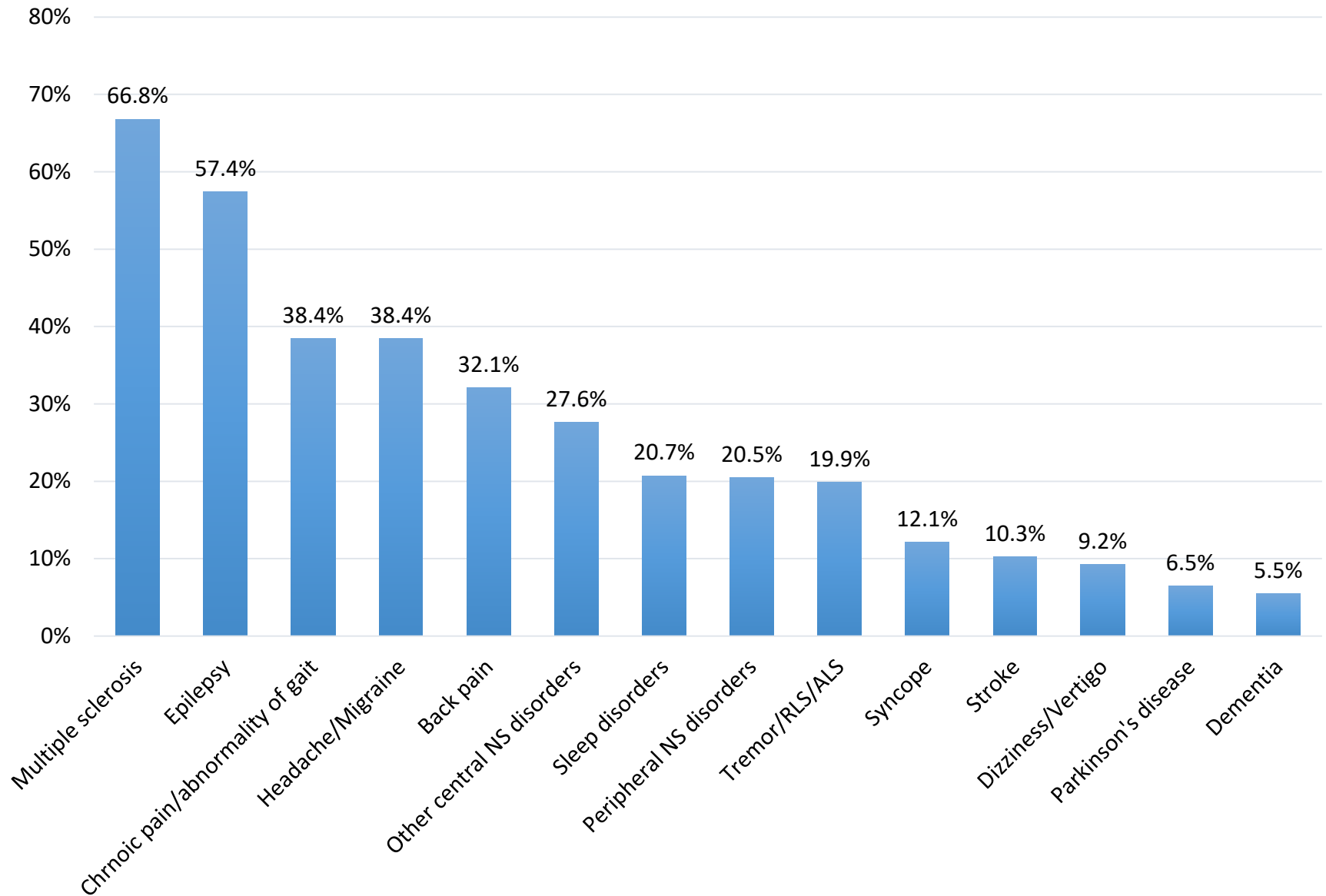
eFigure2. Practice patterns of nurse practitioner and physician assistant in neurologic care



PCP: Primary care physicians; APP: Nurse practitioner and physician assistant

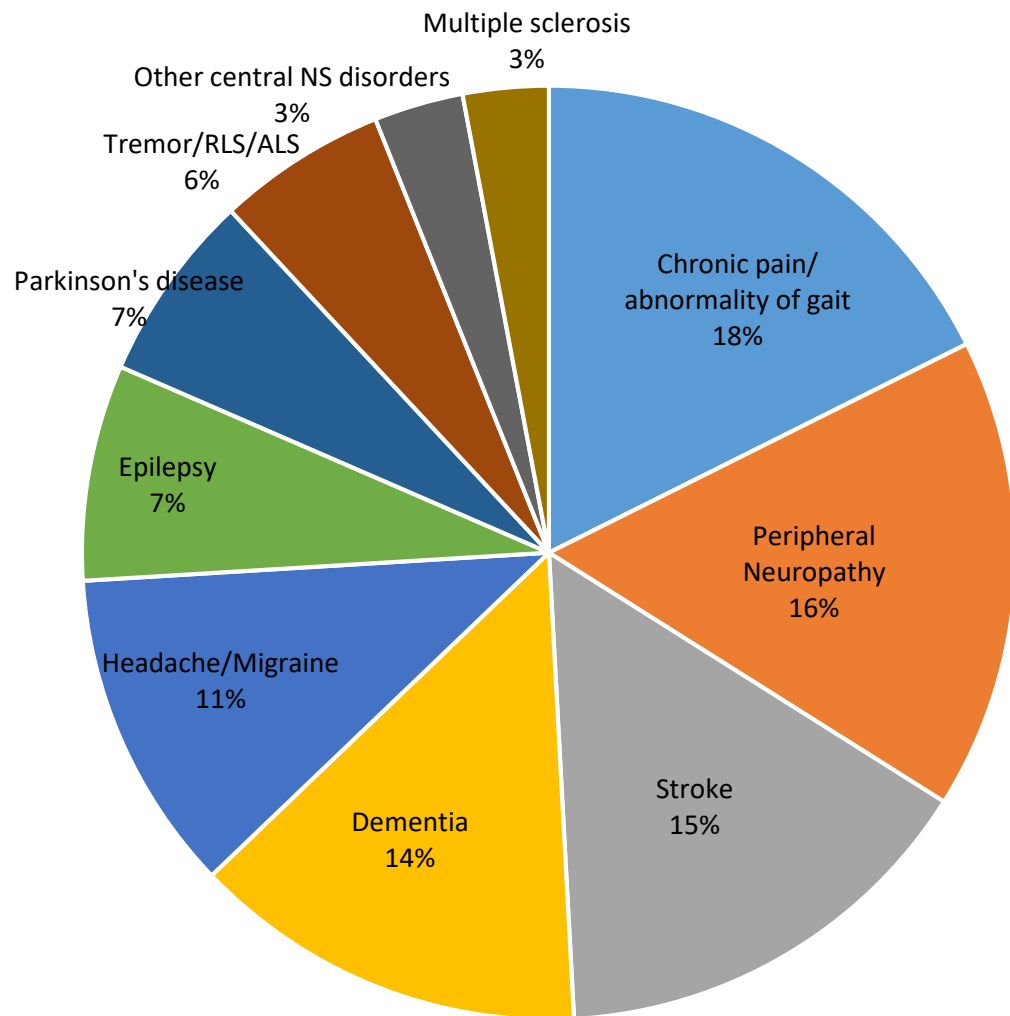
*The histogram shows the distribution of the proportion of visits with a primary diagnosis for the most common neurology diagnostic categories by provider type (PCP-purple color; APP-red color; Neurologist-green color). We can see considerable overlap between APP and PCP while the neurologist histogram stood alone in the other end of spectrum.

eFigure 3. Proportion of visits from Medicare beneficiaries aged <65



eFigure 4. Distribution of visits for the most common neurologic conditions excluding back pain, sleep disorders, syncope, and dizziness/vertigo

(A) Neurologic conditions



(B) Medical provider types

