

Geochemistry, Geophysics, Geosystems

Supporting Information for

Constraints on Early Paleozoic deep-ocean oxygen concentrations from the iron geochemistry of the Bay of Islands ophiolite

Daniel A. Stolper^{1,*}, Xiaofei Pu², Max K. Lloyd^{1,3}, Nikolas I. Christensen⁴, Claire E. Bucholz⁵,
Rebecca A. Lange²

¹Department of Earth and Planetary Science, University of California, Berkeley, CA 94720, USA

²Department of Earth and Environmental Sciences, University of Michigan, Ann Arbor, MI 48109, USA

³Department of Geosciences, The Pennsylvania State University, University Park, PA 16802, USA

⁴Department of Earth, Ocean and Atmospheric Sciences, University of British Columbia, Vancouver, BC, Canada

⁵Division of Geological and Planetary Sciences, California Institute of Technology, Pasadena, CA 91125, USA

Contents of this file

Figures S1 to S3

Additional Supporting Information (Files uploaded separately)

Captions for Data Sets S1 to S3

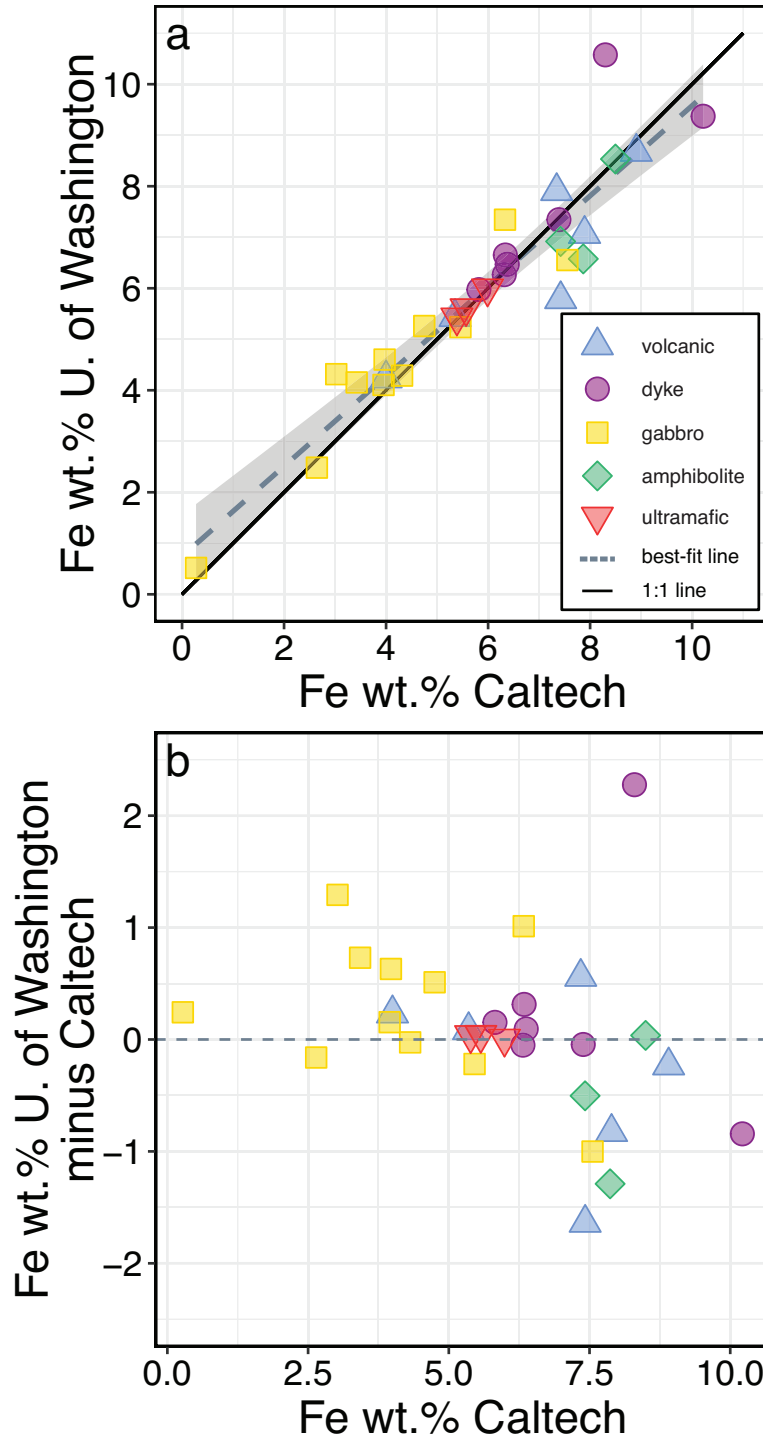


Figure S1. Comparison of total Fe determinations made on different aliquots from the same hand sample at Caltech and the University of Washington. (a) Direct comparison of measurements. Grey band is the 95% confidence interval of the best fit line (dotted grey line). A 1:1 line (black) is provided as well. (b) Difference (U. of Washington minus Caltech) vs. Caltech determinations.

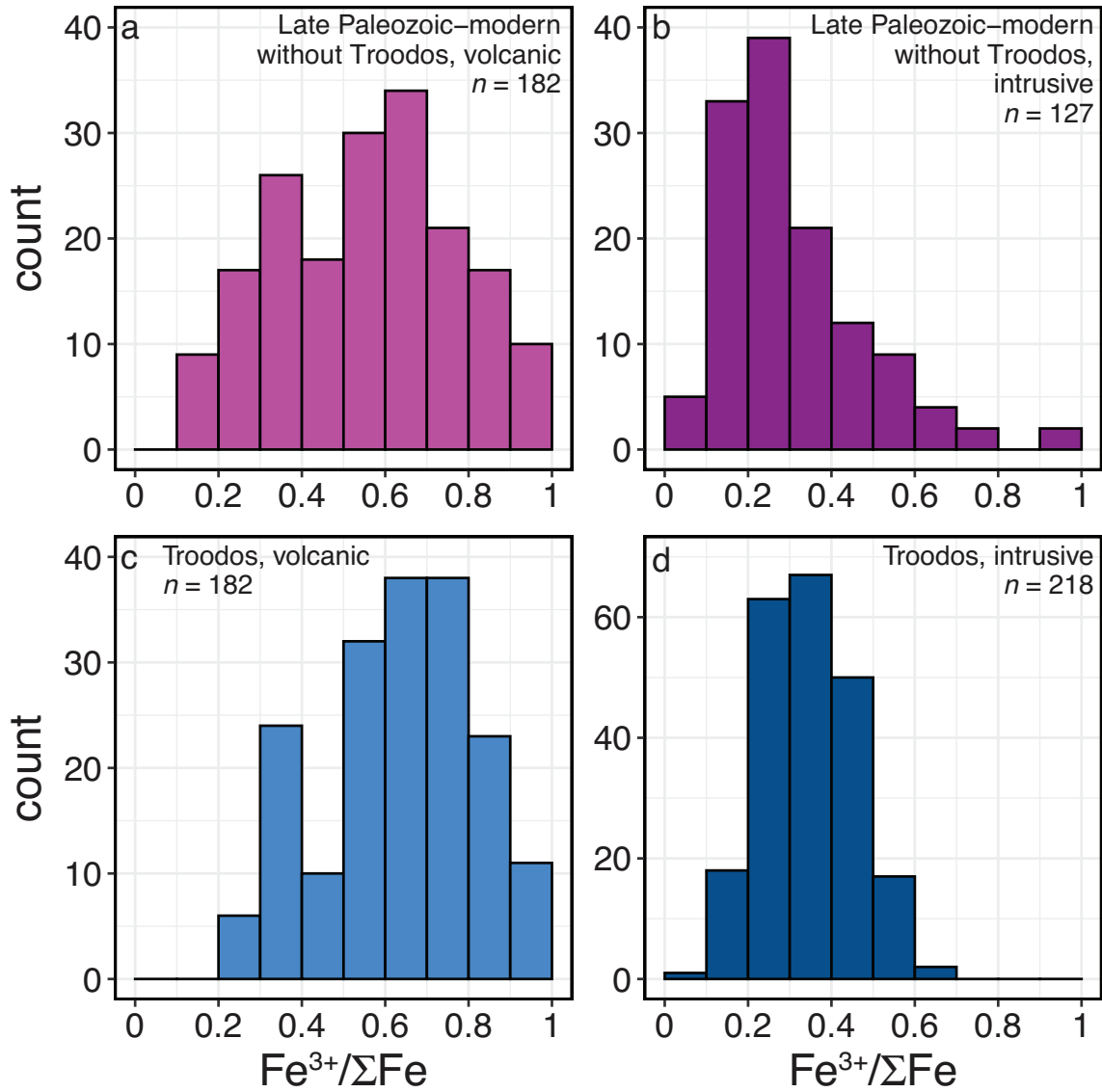


Figure S2. Comparison of the Late Paleozoic-Modern data for volcanic and intrusive rocks that does not include Troodos (a and b) and just for Troodos (c and d). Histograms for specific rock types are not visually different for Troodos vs. the other Late Paleozoic to modern data.

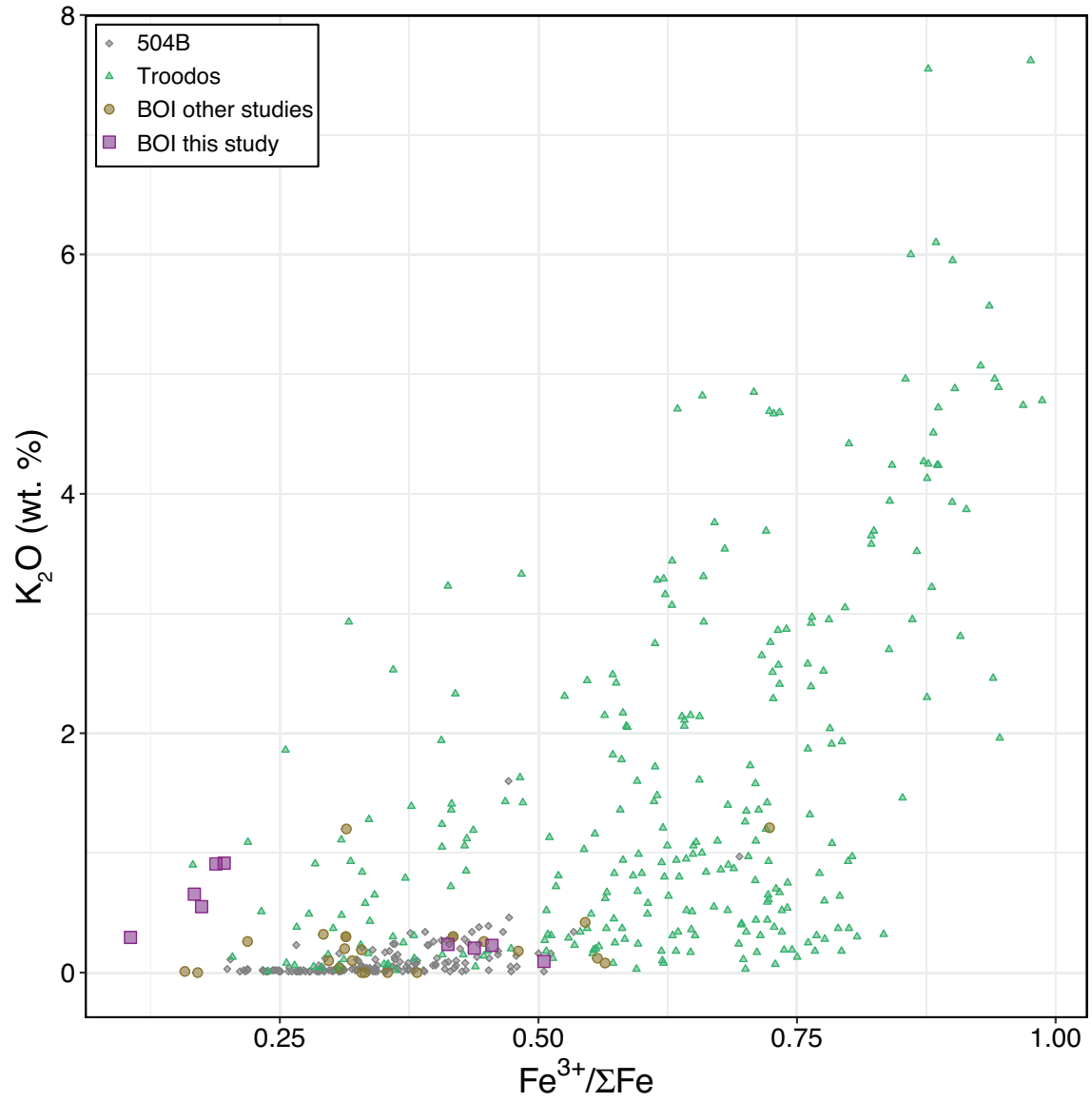


Figure S3. Comparison of $\text{Fe}^{3+}/\Sigma\text{Fe}$ vs. K_2O (wt. %) for volcanic rocks from the BOI samples measured here and by others as well as from site 504B and Troodos.

Data Set S1. Bay of Islands data measured as part of this study.

Data Set S2. Bay of Islands data compiled as part of this study.

Data Set S3. Ophiolite intrusive data compiled as part of this study.