

THE UNIVERSITY OF MICHIGAN

7030-2-T

7030-2-T = RL-2147

A MODIFIED FOCK FUNCTION

by

S. Hong and V. H. Weston

November 1965

Contract AF04(694)-683

Prepared for

BALLISTIC SYSTEMS DIVISION  
AIR FORCE SYSTEMS COMMAND  
UNITED STATES AIR FORCE  
NORTON AIR FORCE BASE, CALIFORNIA



TABLE OF CONTENTS

	Page
ABSTRACT	iv
I. INTRODUCTION	1
II. INTEGRAL EQUATION GOVERNING THE SURFACE FIELDS	2
III. ANALYTIC SOLUTION	6
IV. NUMERICAL SOLUTION	10
V. APPLICATION: ESTIMATION OF THE BACKSCATTERING CROSS SECTION OF A CONE-SPHERE	14
VI. ACKNOWLEDGEMENT	18
VII. APPENDIX A: EVALUATION OF $N(p)$	19
VIII. REFERENCES	22

ABSTRACT

A modified Fock function is obtained to describe the current distribution on a smooth convex boundary, composed of a flat plane smoothly joined to a parabolic cylinder with the join in the penumbra region. Both analytical and numerical methods are used to obtain the modified Fock function which now depends on the distance between the shadow boundary and the flat plane-parabolic cylinder join. The modified Fock function is applied to estimate the backscattering cross section of a cone-sphere.

I  
INTRODUCTION

When a high frequency plane electromagnetic wave is tangentially incident upon a locally parabolic convex surface, the distribution of the induced current near the shadow boundary is described by the Fock function (Fock, 1946). However, if a portion of the scattering surface near the shadow boundary is no longer parabolic but flat (e. g. wedge-cylinder or cone-sphere), the effect of the surface discontinuity at the join of the flat plane and parabolic cylinder must be taken into account. Weston (1965) has, in a previous paper, discussed an extension of the Fock theory when the position of the surface discontinuity coincides exactly with the shadow boundary.

It is the purpose of this paper to present a modified Fock function which provides the current distribution in the penumbra and shadow regions when the surface discontinuity is in the penumbra region. This new modified Fock function describes the current distribution as a function of two variables: one is the distance between the shadow boundary and the observation point, and the other the distance between the shadow boundary and the flat plane-parabolic cylinder join.

The method to be used is as follows: an exact integral equation governing the total magnetic field on the boundary is formulated by Maue's method (Maue, 1949). The high frequency asymptotic expression of the exact integral equation is a Volterra type, and both analytic and numerical solutions of the Volterra equation are obtained. These solutions may be called the modified Fock functions. In section 5, this modified Fock function is applied to estimate the backscattering cross section of a cone-sphere.

II  
INTEGRAL EQUATION GOVERNING THE SURFACE FIELDS

Consider a plane electromagnetic wave

$$\vec{H}_{in} = \hat{z} e^{iky - i\omega t} \quad (1)$$

incident upon a perfectly conducting convex cylinder whose boundary is composed of a smoothly joined flat plane and a parabolic cylinder (Fig. 1).

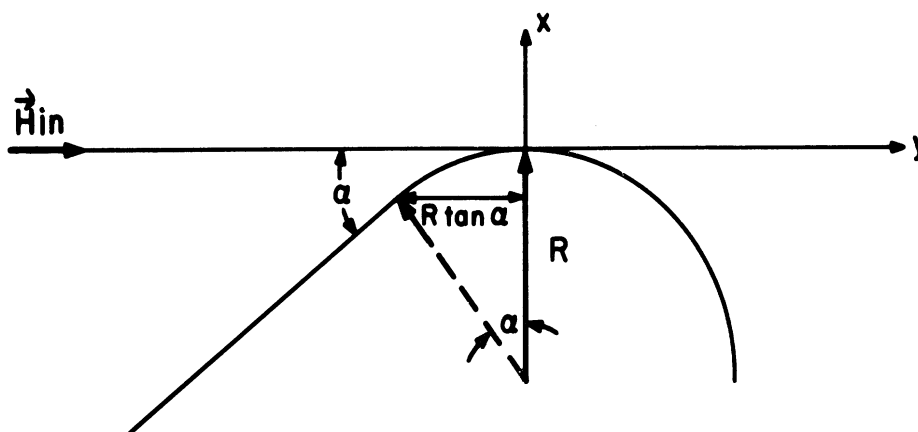


Fig.1 GEOMETRY OF SCATTERING SURFACE

In terms of a Cartesian coordinate system whose origin is taken at the shadow boundary, the surface of the scattering body is represented by the following equations:

$$x = -\frac{y^2}{2R} \quad \text{for } y \geq -R \tan \alpha \quad (2)$$

$$x = \tan \alpha \left( y + \frac{R}{2} \tan \alpha \right) \quad \text{for } y \leq -R \tan \alpha \quad (3)$$

$R$  is the radius of curvature of the parabolic section near the origin and is assumed

large in comparison with wavelength.

The total magnetic field on the boundary is defined as

$$\vec{H}_{\text{total}} = \hat{z} u e^{-i\omega t} . \quad (4)$$

Then the scalar function  $u$  is the solution of the following Maue's equations

(Maue, 1949):

$$\frac{\partial u}{\partial n} = 0 , \quad u(P) = 2 e^{iky} - \frac{ik}{2} \int_{-\infty}^{\infty} ds \frac{\hat{n}_Q \cdot \vec{r}}{r} H_1^{(1)}(kr) u(Q) . \quad (5)$$

$r$  is the distance between two points  $P$  and  $Q$ , and  $\hat{n}$  is a unit vector normal to the boundary.

It was shown by Weston (1965) that on the flat section the field reflected from the surface discontinuity is of the order  $\frac{1}{kR}$ . Therefore, for the high frequency region, the reflected field contributes to higher order corrections, and  $u$  on the flat section becomes equal to the geometrical optics term  $2 e^{iky}$ .

On the parabolic section, let us define

$$u(y) \equiv I(y) e^{iks} \quad \text{for } y > -R \tan \alpha , \quad (6)$$

where  $s$  is the distance along the surface between the shadow boundary and the observation point:

$$s = \int_0^y \sqrt{1 + \left(\frac{y}{R}\right)^2} dy . \quad (7)$$

Using the relationships (5), (6), and (7), we obtain an integral equation governing  $I(y)$ :

$$\begin{aligned}
 I(y) = & 2 e^{iky - iks(y)} \int_{-\infty}^{-R \tan \alpha} \frac{dt}{\cos \alpha} \frac{\hat{n}(t) \cdot \vec{r}_1}{r_1} H_1^{(1)}(kr_1) \\
 & \cdot \left[ \exp \left\{ ikt - iks(y) \right\} + O\left(\frac{1}{kR}\right) \right] \\
 & - \frac{ik}{2} \int_{-R \tan \alpha}^{\infty} dt I(t) \left(1 + \frac{t^2}{R^2}\right)^{1/2} \frac{\hat{n}(t) \cdot \vec{r}_2}{r_2} H_1^{(1)}(kr_2) \\
 & \cdot \exp \left\{ iks(t) - iks(y) \right\} \tag{8}
 \end{aligned}$$

with

$$r_1^2 = (y-t)^2 + \left\{ \frac{y^2}{2R} + \tan \alpha \left( t + \frac{R}{2} \tan \alpha \right) \right\}^2 \tag{9}$$

and

$$r_2^2 = (y-t)^2 + \frac{1}{4R^2} (y^2 - t^2) \tag{10}$$

In order to obtain an appropriate high frequency asymptotic form of  $I(y)$  near the shadow boundary, we shall set

$$\begin{aligned}
 (kR)^{1/3} &= m, \\
 ky &= m^2 \xi \\
 kt &= m^2 \zeta, \text{ and} \\
 I(y) &= J(\xi)
 \end{aligned} \tag{11}$$

When the surface discontinuity lies in the penumbra region,  $m \tan \alpha$  is of the order of unity or less, and can be replaced by  $m\alpha$  for large  $m$ . The asymptotic expression of (9) becomes



$$\begin{aligned}
 J(\xi) = & 2e^{-i\frac{\xi^3}{6}} - \frac{e^{-i\frac{\pi}{4}}}{2} \sqrt{\frac{2}{\pi}} (\xi+m\alpha)^2 \int_{-\infty}^{-m\alpha} \frac{d\zeta}{(\xi-\zeta)^{3/2}} \\
 & \cdot \exp \left\{ i \frac{(\xi+m\alpha)^4}{8(\xi-\zeta)} + i \frac{m^2 \alpha^2}{2} (\xi-\zeta) - i \frac{m\alpha}{2} (\xi+m\alpha)^2 - i \frac{\zeta^3}{6} \right\} \\
 & - \frac{e^{-i\frac{\pi}{4}}}{4} \sqrt{\frac{2}{\pi}} \int_{-m\alpha}^{\xi} d\zeta J(\zeta) (\xi-\zeta)^{1/2} e^{-i\frac{(\xi-\zeta)^3}{24}} + O(m^{-2}). \quad (12)
 \end{aligned}$$

When  $m\alpha$  goes to infinity, the second term in (12) disappears, and the solution becomes the so-called Fock function (Cullen, 1958). This means that when the position of the flat plane-parabolic cylinder join is far away from the shadow boundary, the current distribution is given by the Fock function. Otherwise, the Fock function has to be modified. The solution  $J(\xi)$  of (12) will be called the modified Fock function. When  $\alpha$  is identically zero, the solution of (12) was obtained by Weston (1965).

In the following two sections, the solution of (12) is obtained when  $m\alpha$  is finite but is not identically zero.

III  
ANALYTIC SOLUTION

In this section the solution of (12) is derived when the distance between the shadow boundary and the position of the surface discontinuity is small, so that  $m^3\alpha^3$  is negligible.

In order to solve (12) by the Laplace transform method, it is convenient to modify (12) by setting

$$\xi = \theta - m\alpha ,$$

$$\zeta = \phi - m\alpha ,$$

and

$$J(\theta - m\alpha) = j(\theta) . \tag{13}$$

Substituting these new variables into (12) and taking the Laplace transform of both sides of the integral equation, we obtain

$$\bar{j}(p) = \frac{2N(p)}{1 + \frac{e^{-i\frac{\pi}{4}}}{4} \sqrt{\frac{2}{\pi}} M(p)} \tag{14}$$

where

$$\bar{j}(p) = \int_0^{\infty} d\theta e^{-p\theta} j(\theta) , \tag{15}$$

$$M(p) = \int_0^{\infty} d\theta e^{-p\theta - i\frac{\theta^3}{24}} \theta^{1/2} , \text{ and} \tag{16}$$

$$N(p) = \int_0^{\infty} d\theta e^{-p\theta - i\frac{(\theta - m\alpha)^3}{6}} \left[ 1 - \frac{e^{-i\frac{\pi}{4}}}{4} \sqrt{\frac{2}{\pi}} \theta^2 \int_{-\infty}^0 \frac{d\phi}{(\theta - \phi)^{3/2}} \right]$$

$$\cdot \exp \left\{ i \frac{\theta^4}{8(\theta - \phi)} + i \frac{m^2 \alpha^2}{2} (\theta - \phi) - i \frac{m\alpha}{2} \theta^2 \right\} \quad (17)$$

M(p) has been evaluated by Weston (1965) as

$$M(p) = 4\pi \sqrt{2\pi} \left[ \text{Ai}(q) \left\{ \text{Ai}'(q) - i\text{Bi}'(q) \right\} + \frac{i}{2\pi} \right] e^{i \frac{3\pi}{4}} \quad (18)$$

with  $q = -ip2^{1/3}$ , where Ai and Bi are Airy functions of the first and second kind, respectively, and the prime denotes differentiation with respect to the argument.

The denominator of (14) becomes

$$2\pi i \text{Ai}(q) \frac{d}{dq} [\text{Ai}(q) - i\text{Bi}(q)]. \quad (19)$$

N(p) is evaluated in the Appendix under the assumption that  $(m\alpha)^3$  is negligible. We obtain

$$\begin{aligned} \bar{j}(p) = & - \frac{2i}{[\text{Ai}'(q) - i\text{Bi}'(q)]} \left[ 2^{4/3} \left\{ \frac{1}{3} + \frac{1}{2} \int_0^q [\text{Ai}(x) - i\text{Bi}(x)] dx \right\} \right. \\ & \cdot \left. \left\{ 1 - q^2 m^2 \alpha^2 2^{-5/3} \right\} + 2^{-4/3} m^2 \alpha^2 \left\{ [\text{Ai}(q) - i\text{Bi}(q)] + q [\text{Ai}'(q) - i\text{Bi}'(q)] \right\} \right] \end{aligned} \quad (20)$$

The desired solution  $J(\xi)$  is obtained by taking the inverse transform of (20) and using the relationships  $\xi = \theta - m\alpha$  and  $j(\theta) = J(\theta - m\alpha)$  :

$$\begin{aligned} J(\xi) = & \frac{2^{-1/3}}{\pi} \int_{-\infty - ic}^{\infty - ic} dq \frac{\exp \left\{ iq 2^{-1/3} (\xi + m\alpha) \right\}}{w_1'(q)} \left[ \left\{ 1 - q^2 m^2 \alpha^2 2^{-5/3} \right\} \right. \\ & \cdot \left. \left\{ \frac{2^{4/3}}{3} \sqrt{\pi} - i 2^{1/3} \int_0^q w_1(x) dx \right\} - i 2^{-4/3} m^2 \alpha^2 \left\{ w_1(q) + q w_1'(q) \right\} \right] \end{aligned} \quad (21)$$

with

$$w_1'(q) = i\sqrt{\pi} [Ai'(q) - iBi'(q)] .$$

When  $\xi$  is sufficiently large and positive, the contour integral may be evaluated in terms of the residues at the zeros of  $w_1'(q)$ . For numerical calculation of the residue series, it is convenient to substitute the following relationship:

$$w_1(q) = e^{i\frac{\pi}{6}} 2\sqrt{\pi} Ai\left(qe^{i\frac{2\pi}{3}}\right), \quad q = e^{i\frac{\pi}{3}}\beta . \quad (22)$$

The high frequency asymptotic expression of the total field in the shadow region for a small  $m\alpha$  is

$$\begin{aligned} u(y) = & e^{iks} \sum_{\ell=1}^{\infty} \frac{\exp\left\{i\beta_{\ell} e^{i\frac{\pi}{3}} \frac{y}{d}\right\}}{\beta_{\ell} Ai(-\beta_{\ell})} \exp\left\{im\alpha\beta_{\ell} 2^{-1/3} e^{i\frac{\pi}{3}}\right\} \\ & \cdot \left[ \left\{ \frac{2}{3} + 2 \int_0^{\beta_{\ell}} Ai(-x) dx \right\} \left\{ 1 - \beta_{\ell}^2 m^2 \alpha^2 2^{-5/3} e^{i\frac{2\pi}{3}} \right\} \right. \\ & \left. + e^{-i\frac{\pi}{3}} m^2 \alpha^2 2^{-2/3} Ai(-\beta_{\ell}) \right] \quad (23) \end{aligned}$$

with  $d = \left(\frac{\lambda R^2}{\pi}\right)^{1/3}$ . When  $\alpha$  goes to zero, Eq. 23 becomes equal to the solution given by Weston (1965), except for a factor two. The reason for this is that when  $\alpha$  is identically zero the amplitude of the total field on the flat portion is taken to be unity, while it is taken to be two in this paper. Numerical values of  $\beta_{\ell}$ ,  $Ai(-\beta_{\ell})$  and  $\int_0^{\beta_{\ell}} Ai(-x)dx$  are given by Weston (1965).

Therefore, when  $kR\alpha^3$  is negligible, each mode of the creeping waves given

by (23) is different from the Fock solution by the factor (Goodrich, 1959)

$$\exp \left\{ i\beta_l^2 m^2 \alpha^2 e^{-\frac{1}{3}} e^{i\frac{\pi}{3}} \right\} \left[ \left\{ \frac{2}{3} + 2 \int_0^{\beta_l} \text{Ai}(-x) dx \right\} \left\{ 1 - \beta_l^2 m^2 \alpha^2 e^{-\frac{5}{3}} e^{i\frac{2\pi}{3}} \right\} + e^{-i\frac{\pi}{3}} m^2 \alpha^2 e^{-\frac{2}{3}} \text{Ai}(-\beta_l) \right]. \quad (24)$$

IV  
NUMERICAL SOLUTION

In this section, a numerical method is described to obtain the solution of (12) without the assumption that  $m^3 \alpha^3$  is negligible.

The high frequency asymptotic expansion reduces Maue's integral equation from that of the Fredholm class to that of the Volterra type which is much easier to handle numerically.

Several methods are available for the solution of the Volterra integral equation. When a high speed digital computer is available, the simplest approach is to expand the unknown in a set of algebraic functions  $J_1, \dots, J_n$ , and to require the integral equation be satisfied at  $n$  different points. The solution of (12) may be approximated by setting

$$J_n = J(\xi = n\Delta - m\alpha). \quad (25)$$

$\Delta$  is the distance between two adjacent points on the contour of integration.

Insertion of this expression in (12) gives

$$J_n = H_n + \frac{\Delta}{3} \left[ K_{n0} J_0 + 4K_{n1} J_1 + 2K_{n2} J_2 + \dots + 2K_{n,n-2} J_{n-2} + 4K_{n,n-1} J_{n-1} \right] \quad (26)$$

with

$$H_n = 2e^{-i\frac{(n\Delta - m\alpha)^3}{6}} \left[ 1 - \frac{e^{-i\frac{\pi}{4}}}{4} \sqrt{\frac{2}{\pi}} \int_{-\infty}^{-m\alpha} d\xi \frac{(n\Delta)^2}{(n\Delta - m\alpha - \xi)^{3/2}} \right] \cdot \exp \left\{ i \frac{(n\Delta)^4}{8(n\Delta - m\alpha - \xi)} + i \frac{m^2 \alpha^2}{2} (n\Delta - m\alpha - \xi) - i \frac{m\alpha}{2} (n\Delta)^2 \right\} \quad (27)$$

and

$$K_{n,m} = -\frac{e^{-i\frac{\pi}{4}}}{4} \sqrt{\frac{2}{\pi}} (n-m)^{1/2} \exp \left\{ -i \frac{(n-m)^3 \Delta^3}{24} \right\}. \quad (28)$$

As shown in (26), the current at the  $n$ th point ( $\xi = n\Delta - m\alpha$ ) can be obtained by simply substituting the previously known currents between the 0th to the  $(n - 1)$ th points. This is the reason why, for high frequency scattering, the asymptotic expression of the integral equation governing the surface is simpler to solve numerically than the exact (Maue's) equation.

In Figs. 2 and 3, numerical solutions of the modified Fock function are compared with the regular Fock function.

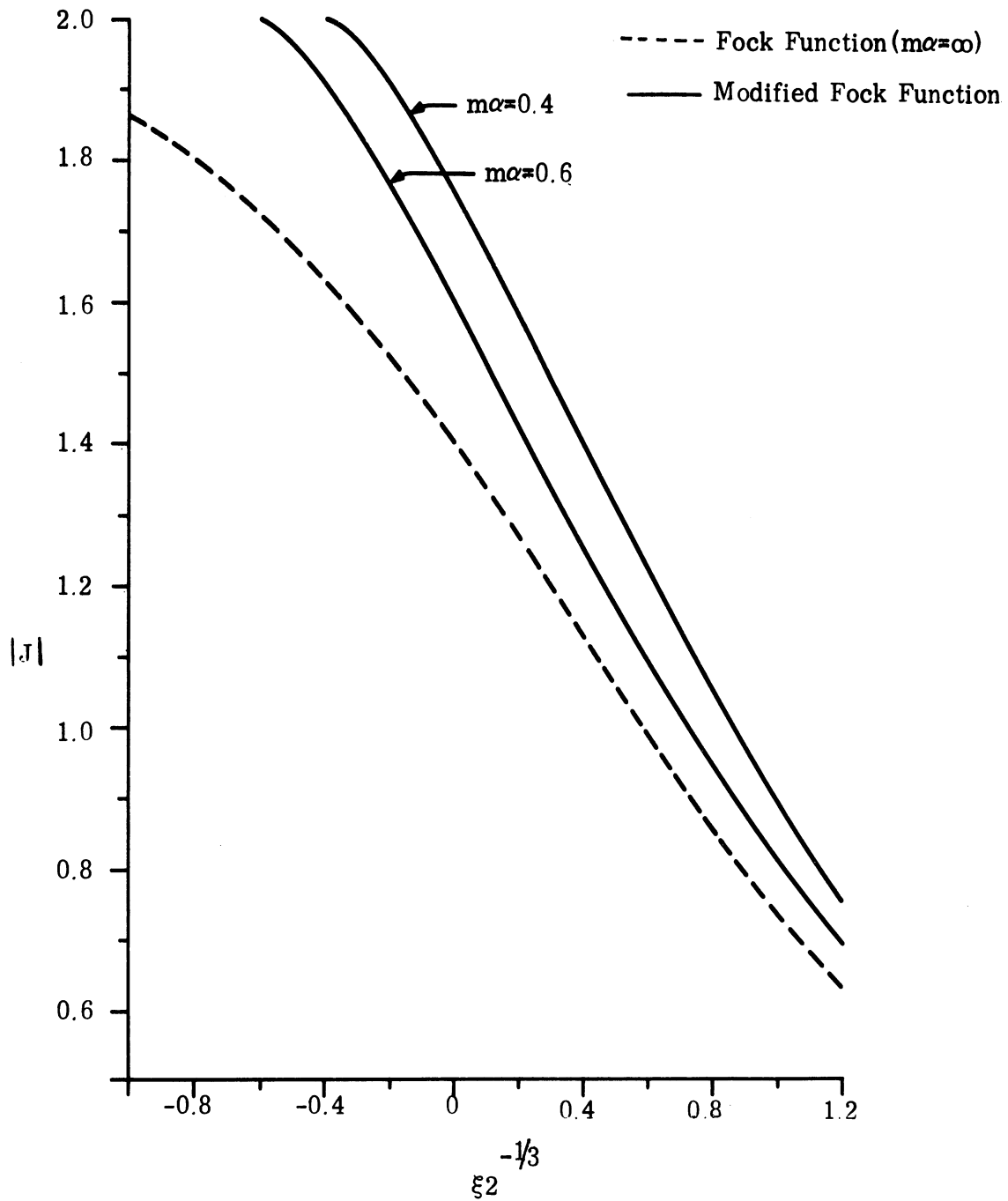


FIG. 2. Amplitude of J in the Penumbra Region.



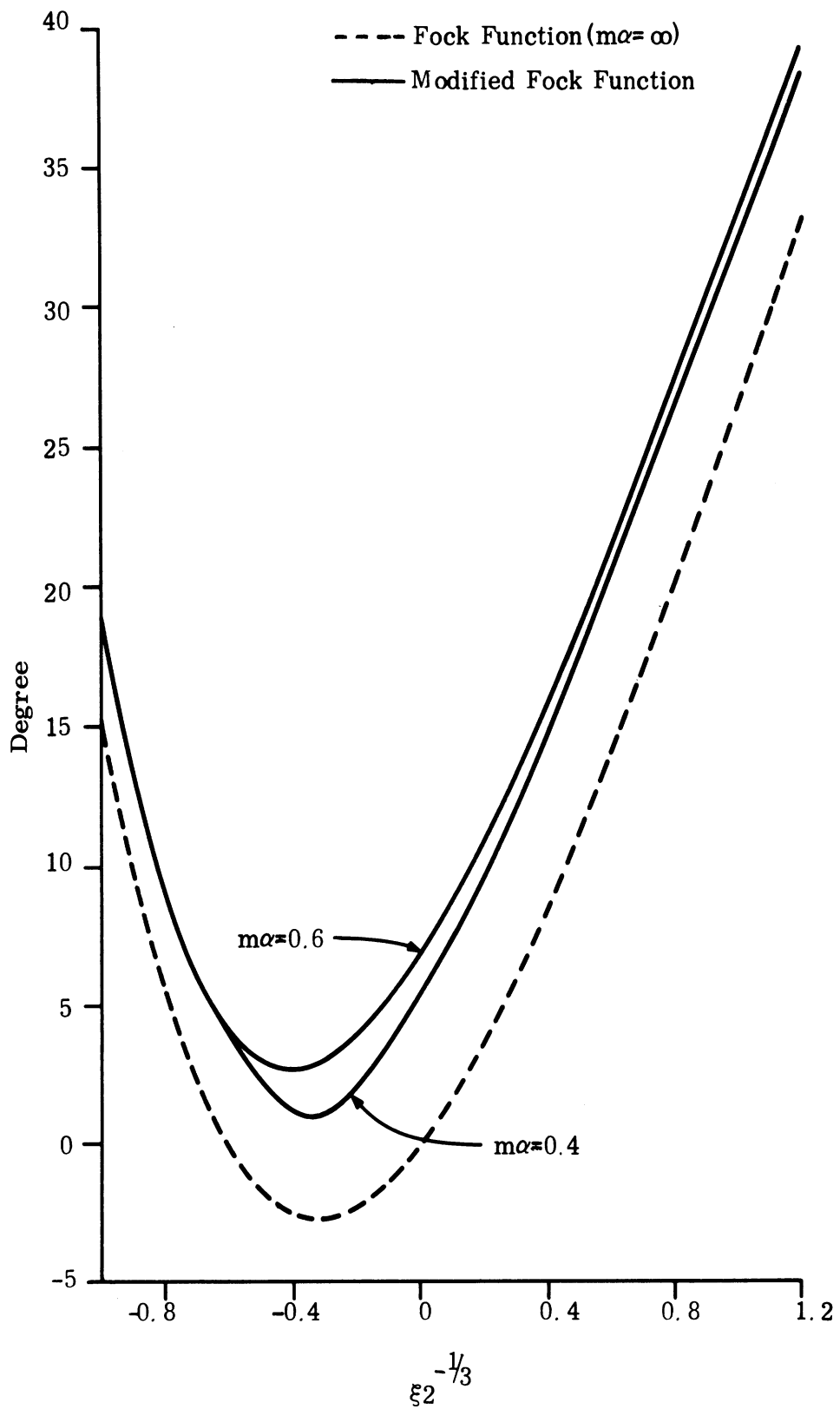


FIG. 3. Phase of J in the Penumbra Region.

## V

APPLICATION: ESTIMATION OF THE BACKSCATTERING  
CROSS SECTION OF A CONE-SPHERE

It is known that a good approximation to the nose-on backscattering cross section of a cone-sphere can be had by adding the contribution of a sphere creeping wave to the physical optics estimate of the scattering from the cone-sphere join (Senior, 1965). Nevertheless, Senior reported that there is evidence of a small but systematic discrepancy between the amplitudes of the creeping wave contributions from a cone-sphere and a sphere alone. This phenomenon may be explained by results obtained in the previous sections. When a plane wave is incident upon a cone-sphere at nose-on direction, the cone-sphere join lies near the shadow boundary. We have to take into account that the geometry of the scattering surface near the shadow boundary is no longer entirely spherical but a portion of it is conical.

Fock has shown that when a high frequency plane electromagnetic wave is incident upon a three-dimensional conducting body, the dominant mode of the creeping waves may be described by the two-dimensional solution (Goodrich, 1959). Therefore, we may apply the results of the previous sections in analyzing the diffraction problems of a cone-sphere. At nose-on incidence, the distance between the cone-sphere join and the shadow boundary is very small in many practical cases, and the result given by (23) may be applied.

For example, when the cone angle ( $2\alpha$ ) is 25 degrees, Senior (1965) gives the formula for the backscattering cross section of a cone-sphere at nose-on incidence as

$$\sigma/\lambda^2 = 0.02190 \left| A(1.916 - 0.05593 kR) + \exp \left\{ i\pi (1.45410 - 1.16335 kR) \right\} \right|^2 \quad (29)$$

A is the ratio between the amplitudes of the two dominant creeping waves; one is supported on a spherical portion of a cone sphere, and the other on a sphere alone. Senior (1965) has obtained an approximate expression of A on the basis of physical reasoning.

We may obtain A from (24) as

$$A = \left[ \left\{ \frac{2}{3} + 2 \int_0^{\beta_1} \text{Ai}(-x) dx \right\} \left\{ 1 - \beta_1^2 \alpha^2 \left( \frac{kR}{2} \right)^{2/3} \frac{e^{i \frac{2\pi}{3}}}{2} \right\} + e^{-i \frac{\pi}{3}} \left( \frac{kR}{2} \right)^{2/3} \alpha^2 \text{Ai}(-\beta_1) \right] \exp \left\{ i \beta_1 \left( \frac{kR}{2} \right)^{1/3} \alpha e^{i \frac{\pi}{3}} \right\} . \quad (30)$$

Insertion of this expression in (29) gives the backscattering cross section of a cone-sphere with the cone angle  $2\alpha = 25^\circ$ . The result is shown in Fig. 4. In order to assist the computation of the backscattering cross section of either a cone-sphere or a wedge-cylinder at nose-on incidence, the numerical value of  $A$  as a function of both  $kR$  and  $\alpha$  is shown in Fig. 5. This figure provides a reasonably accurate means in estimating the creeping wave contribution when  $kR$  is of order 5. For a smaller  $kR$ , a more refined evaluation of  $A$  is necessary, which may be achieved by including higher order terms in the asymptotic representation of Maue's equation (5).

When a plane wave is not incident along the nose-on direction, the distance between the shadow boundary and the cone-sphere join is not necessarily small. In this case we may use the numerical method described in the previous section to obtain the creeping wave contribution.

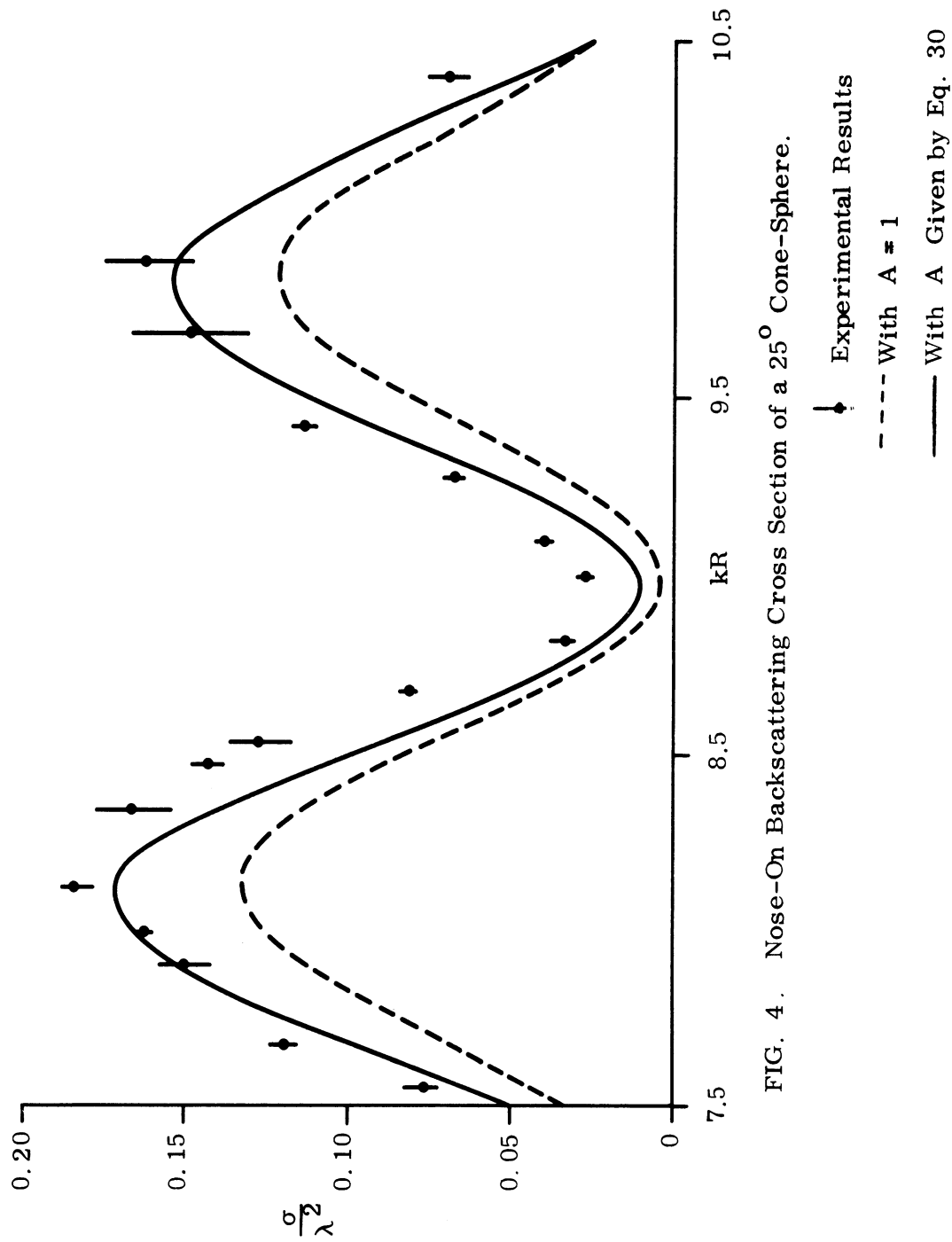


FIG. 4. Nose-On Backscattering Cross Section of a 25° Cone-Sphere.

- Experimental Results
- - - With  $A = 1$
- With  $A$  Given by Eq. 30

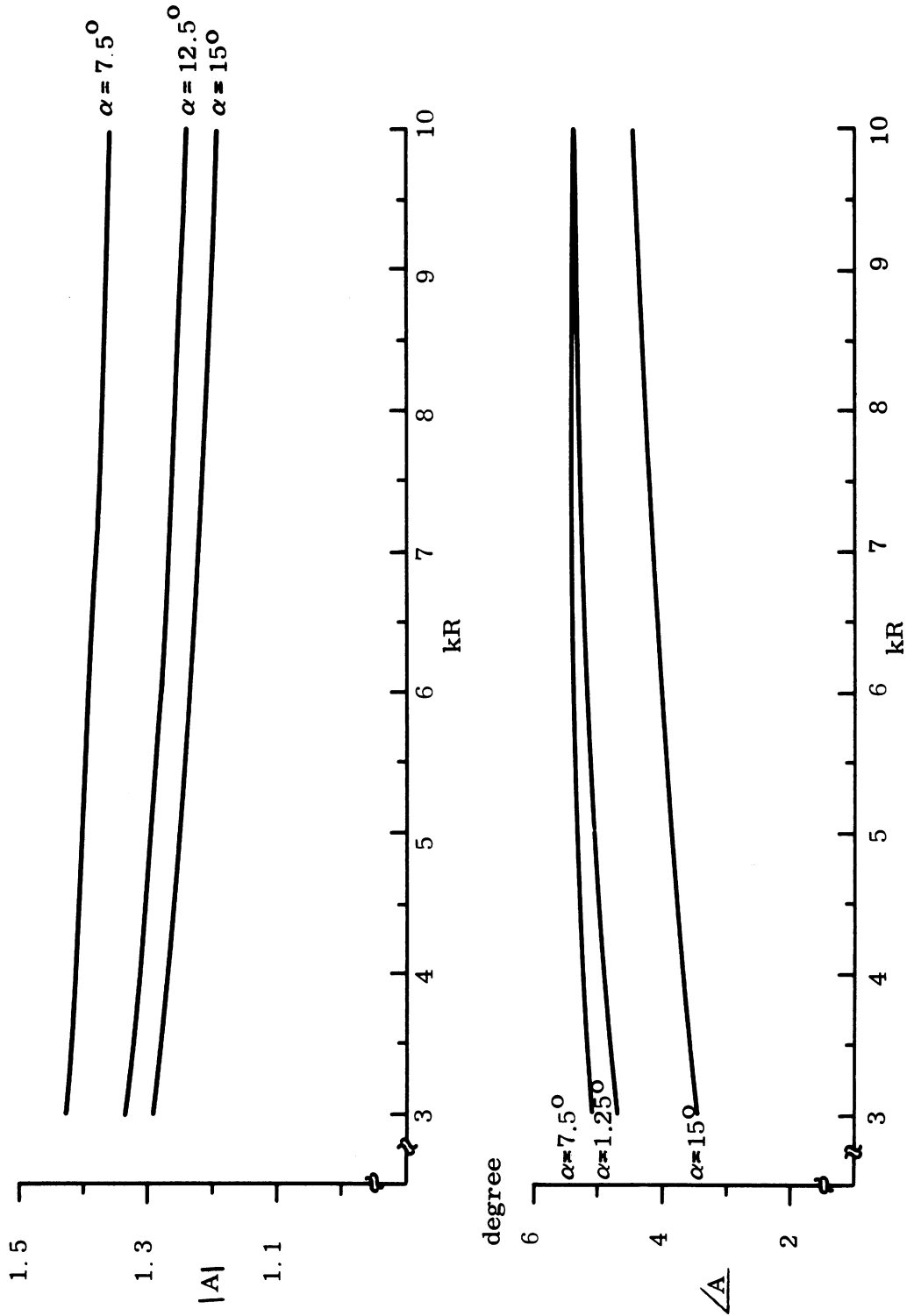


FIG. 5. Absolute Value and Phase of A Given by Eq. 30:  $2\alpha =$  The Cone Angle.

VI  
ACKNOWLEDGMENT

The authors wish to thank Dr. T. B. A. Senior for assistance with the manuscript and Messrs. J. Ducmanis and H. Hunter for assistance with computation.

VII  
APPENDIX A

EVALUATION OF  $N(p)$

In this appendix the integral

$$N(p) = \int_0^{\infty} d\theta e^{-p(\theta) - i \frac{(\theta - m\alpha)^3}{6}} \left[ 1 - \frac{e^{-i \frac{\pi}{4}}}{4} \sqrt{\frac{2}{\pi}} \theta^2 \int_{-\infty}^0 \frac{d\phi}{(\theta - \phi)^{3/2}} \right. \\ \left. \cdot \exp \left\{ i \frac{\theta^4}{8(\theta - \phi)} - i \frac{m\alpha}{2} \theta^2 + i \frac{m^2 \alpha^2}{2} (\theta - \phi) \right\} \right] \quad (A.1)$$

is evaluated when  $m\alpha$  is small so that  $(m\alpha)^3$  and higher order terms are negligible. The integrand of (A. 1) may be further simplified by making the change of variable  $\theta - \phi = x$  and using the relationship

$$\theta^2 \int_0^{\infty} \frac{dx}{x^{3/2}} \left\{ \exp \left[ i \frac{\theta^4}{8x} + i \frac{m^2 \alpha^2}{2} x \right] \right\} = 2 \sqrt{2\pi} e^{i \frac{\pi}{4}} e^{i \frac{m\alpha}{2} \theta^2} \quad (A.2)$$

We obtain

$$e^{-i \frac{(\theta - m\alpha)^3}{6}} \left[ 1 - \frac{e^{-i \frac{\pi}{4}}}{4} \sqrt{\frac{2}{\pi}} \theta^2 \int_{-\infty}^0 \frac{d\theta}{(\theta - \phi)^{3/2}} \exp \left\{ i \frac{\theta^4}{8(\theta - \phi)} - i \frac{m\alpha}{2} \theta^2 + i \frac{m^2 \alpha^2}{2} (\theta - \phi) \right\} \right] \\ = \frac{e^{i \frac{m^3 \alpha^3}{6} - i \frac{\pi}{4}}}{2 \sqrt{2\pi}} \theta^2 \int_0^{\theta} \frac{dx}{x^{3/2}} \exp \left\{ i \frac{\theta^4}{8x} - i \frac{\theta^3}{6} + i \frac{m^2 \alpha^2}{2} (x - \theta) \right\} \quad (A.3)$$

Neglecting terms involving  $(m\alpha)^3$  and higher order in (A. 3),  $N(p)$  may be written as a sum of the two functions:

$$N(p) = \frac{e^{-i\frac{\pi}{4}}}{2\sqrt{2\pi}} N_1(p) + m^2 \alpha^2 \frac{e^{i\frac{\pi}{4}}}{4\sqrt{2\pi}} N_2(p) + O(m^3 \alpha^3) \quad (\text{A. 4})$$

with

$$N_1(p) = \int_0^\infty d\theta e^{-p\theta} \theta^2 \int_0^\theta \frac{dx}{x^{3/2}} e^{i\frac{\theta^4}{8x} - i\frac{\theta^3}{6}} \quad (\text{A. 5})$$

and

$$N_2(p) = \int_0^\infty d\theta e^{-p\theta} \theta^2 \int_0^\theta dx \frac{(x-\theta)}{x^{3/2}} e^{i\frac{\theta^4}{8x} - i\frac{\theta^3}{6}} \quad (\text{A. 6})$$

$N_1(p)$  was evaluated by Weston (1965) [ $N_1(p)$  is equal to  $4\sqrt{2} F(p)$  where  $F(p)$  was evaluated in the appendix] as

$$N_1(p) = e^{i\frac{\pi}{4}} \frac{5}{8} \frac{3}{2} \frac{1}{\pi} \text{Ai}(q) \left[ \frac{1}{3} + \frac{1}{2} \int_0^q \left\{ \text{Ai}(x) - i\text{Bi}(x) \right\} dx \right] \quad (\text{A. 7})$$

with  $q = -ip2^{1/3}$ .

$N_2(p)$  can be evaluated by integration by parts:

$$N_2(p) = \frac{d}{dp} N_1(p) + \frac{i}{4} \frac{d^4}{dp^4} N_1(p) + 2 \frac{d^2}{dp^2} M(p) \quad (\text{A. 8})$$

$M(p)$  is given by (18).



Using (A. 7) and (A. 8) we obtain

$$\begin{aligned}
 N(p) = & \pi 4 2^{1/3} \text{Ai}(q) \left[ \frac{1}{3} + \frac{1}{2} \int_0^q \left\{ \text{Ai}(x) - i\text{Bi}(x) \right\} dx \right] \left[ 1 - m^2 \alpha^2 2^{-5/3} q^2 \right] \\
 & + \pi 2^{-1/3} m^2 \alpha^2 \text{Ai}(q) \left[ \left\{ \text{Ai}(q) - i\text{Bi}(q) \right\} + q \left\{ \text{Ai}'(q) - i\text{Bi}'(q) \right\} \right] \quad (\text{A. 9})
 \end{aligned}$$

VIII  
REFERENCES

- Cullen, J. A., (1958) "Surface Currents Induced by Short-Wavelength Radiation," Phys. Rev., 109, 1863-1867.
- Fock, V., (1946) "The Distribution of Currents Induced by a Plane Wave on the Surface of a Conductor," J. Phys., 10, 130-136.
- Goodrich, R. F., (1959), "Fock Theory - An Appraisal and Exposition," IRE Trans. Ant. Prop., AP-7, 28-36.
- Maue, A. W., (1949), "On the formulation of a general diffraction problem through an integral equation," Z. Phys., 126, 601-618.
- Senior, T. B. A., (1965), "The Backscattering Cross-Section of a Cone Sphere," IEEE Trans. Ant. Prop., AP-13, 271-277.
- Weston, V. H., (1965), "Extension of Fock Theory for Currents in the Penumbra Region," NBS, J. Res., 69D, 1257-1270.

**DOCUMENT CONTROL DATA - R&D**

*(Security classification of title, body of abstract and indexing annotation must be entered when the overall report is classified)*

1. ORIGINATING ACTIVITY (Corporate author) The University of Michigan College of Engineering, Department of Electrical Engineering Radiation Laboratory, Ann Arbor, Michigan		2a. REPORT SECURITY CLASSIFICATION Unclassified	
3. REPORT TITLE A Modified Fock Function		2b. GROUP	
4. DESCRIPTIVE NOTES (Type of report and inclusive dates) Technical Report			
5. AUTHOR(S) (Last name, first name, initial) S. Hong and V. H. Weston			
6. REPORT DATE November 1965		7a. TOTAL NO. OF PAGES 22	7b. NO. OF REFS 6
8a. CONTRACT OR GRANT NO. AF 04(694)-683		8a. ORIGINATOR'S REPORT NUMBER(S) 7030-2-T	
b. PROJECT NO.		8b. OTHER REPORT NO(S) (Any other numbers that may be assigned this report)	
c.			
d.			
10. AVAILABILITY/LIMITATION NOTICES Qualified Requestors May Obtain Copies of This Report From DDC			
11. SUPPLEMENTARY NOTES		12. SPONSORING MILITARY ACTIVITY Ballistic Systems Division Air Force Systems Command United States Air Force, Norton Air Force Base, California	
13. ABSTRACT  A modified Fock function is obtained to describe the current distribution on a smooth convex boundary, composed of a flat plane smoothly joined to a parabolic cylinder with the join in the penumbra region. Both analytical and numerical methods are used to obtain the modified Fock Function which now depends on the distance between the shadow boundary and the flat plane-parabolic cylinder join. The modified Fock function is applied to estimate the backscattering cross section of a cone-sphere.			

14. KEY WORDS	LINK A		LINK B		LINK C	
	ROLE	WT	ROLE	WT	ROLE	WT
<p>Diffraction and Scattering Fock Function, Modified Cone-Sphere</p>						

**INSTRUCTIONS**

**1. ORIGINATING ACTIVITY:** Enter the name and address of the contractor, subcontractor, grantee, Department of Defense activity or other organization (*corporate author*) issuing the report.

**2a. REPORT SECURITY CLASSIFICATION:** Enter the overall security classification of the report. Indicate whether "Restricted Data" is included. Marking is to be in accordance with appropriate security regulations.

**2b. GROUP:** Automatic downgrading is specified in DoD Directive 5200.10 and Armed Forces Industrial Manual. Enter the group number. Also, when applicable, show that optional markings have been used for Group 3 and Group 4 as authorized.

**3. REPORT TITLE:** Enter the complete report title in all capital letters. Titles in all cases should be unclassified. If a meaningful title cannot be selected without classification, show title classification in all capitals in parenthesis immediately following the title.

**4. DESCRIPTIVE NOTES:** If appropriate, enter the type of report, e.g., interim, progress, summary, annual, or final. Give the inclusive dates when a specific reporting period is covered.

**5. AUTHOR(S):** Enter the name(s) of author(s) as shown on or in the report. Enter last name, first name, middle initial. If military, show rank and branch of service. The name of the principal author is an absolute minimum requirement.

**6. REPORT DATE:** Enter the date of the report as day, month, year, or month, year. If more than one date appears on the report, use date of publication.

**7a. TOTAL NUMBER OF PAGES:** The total page count should follow normal pagination procedures, i.e., enter the number of pages containing information.

**7b. NUMBER OF REFERENCES:** Enter the total number of references cited in the report.

**8a. CONTRACT OR GRANT NUMBER:** If appropriate, enter the applicable number of the contract or grant under which the report was written.

**8b, 8c, & 8d. PROJECT NUMBER:** Enter the appropriate military department identification, such as project number, subproject number, system numbers, task number, etc.

**9a. ORIGINATOR'S REPORT NUMBER(S):** Enter the official report number by which the document will be identified and controlled by the originating activity. This number must be unique to this report.

**9b. OTHER REPORT NUMBER(S):** If the report has been assigned any other report numbers (*either by the originator or by the sponsor*), also enter this number(s).

**10. AVAILABILITY/LIMITATION NOTICES:** Enter any limitations on further dissemination of the report, other than those

imposed by security classification, using standard statements such as:

- (1) "Qualified requesters may obtain copies of this report from DDC."
- (2) "Foreign announcement and dissemination of this report by DDC is not authorized."
- (3) "U. S. Government agencies may obtain copies of this report directly from DDC. Other qualified DDC users shall request through \_\_\_\_\_."
- (4) "U. S. military agencies may obtain copies of this report directly from DDC. Other qualified users shall request through \_\_\_\_\_."
- (5) "All distribution of this report is controlled. Qualified DDC users shall request through \_\_\_\_\_."

If the report has been furnished to the Office of Technical Services, Department of Commerce, for sale to the public, indicate this fact and enter the price, if known.

**11. SUPPLEMENTARY NOTES:** Use for additional explanatory notes.

**12. SPONSORING MILITARY ACTIVITY:** Enter the name of the departmental project office or laboratory sponsoring (*paying for*) the research and development. Include address.

**13. ABSTRACT:** Enter an abstract giving a brief and factual summary of the document indicative of the report, even though it may also appear elsewhere in the body of the technical report. If additional space is required, a continuation sheet shall be attached.

It is highly desirable that the abstract of classified reports be unclassified. Each paragraph of the abstract shall end with an indication of the military security classification of the information in the paragraph, represented as (TS), (S), (C), or (U).

There is no limitation on the length of the abstract. However, the suggested length is from 150 to 225 words.

**14. KEY WORDS:** Key words are technically meaningful terms or short phrases that characterize a report and may be used as index entries for cataloging the report. Key words must be selected so that no security classification is required. Identifiers, such as equipment model designation, trade name, military project code name, geographic location, may be used as key words but will be followed by an indication of technical context. The assignment of links, rules, and weights is optional.