



THE DETROIT AREA STUDY

1951-1988

FACULTY INVESTIGATORS

The present and former University of Michigan faculty members listed below have conducted research through the facilities of the Detroit Area Study.

Walter R. Allen, Sociology: 1981

Duane F. Alwin, Sociology and Survey Research Center (ISR): 1982, 1987

Robert C. Angell, Sociology: 1956

Thomas B. Anton, Political Science: 1975

Morris Axelrod, Sociology: 1955

William C. Birdsall, Social Work: 1988

Robert O. Blood Jr., Sociology: 1955

Bruce D. Bowen, Political Science: 1975

Harvey E. Brazer, Economics: 1959

Angus Campbell, Sociology and Survey Research Center (ISR): 1980

Charles F. Cannell, Survey Research Center (ISR): 1965

Robert E. Cole, Sociology: 1970

Jean M. Converse, Sociology: 1986

Otis Dudley Duncan, Sociology: 1971

Bettye Eidson, Sociology: 1972

Samuel J. Eldersveld, Political Science: 1952, 1957

Reynolds Farley, Sociology: 1976

Michael Flynn, Sociology: 1973

Ronald Freedman, Sociology: 1954, 1962

David Goldberg, Sociology: 1962, 1978

Robert M. Groves, Sociology: 1977

V. Lee Hamilton, Sociology: 1977

Yehekel Hasenfeld, Social Work and Sociology: 1983

Robert Hefner, Psychology and Center for Research on Conflict Resolution: 1964

THE DETROIT AREA STUDY

**A Record of Research Conducted by
the Detroit Area Study
1951-1988**

**The University of Michigan
Ann Arbor**

Published November, 1988
by the Detroit Area Study
Department of Sociology
University of Michigan

This report was prepared by
Jean M. Converse and Erika Meyer

We gratefully acknowledge the example of
the editors of four previous editions and the
assistance of Andrea Johns and Patricia Preston
on the current edition. We also thank *The Michigan
Daily* for photographs of Detroit.

Correspondence should be addressed to
Detroit Area Study
3528 L S and A Building
University of Michigan
Ann Arbor, Michigan 48109

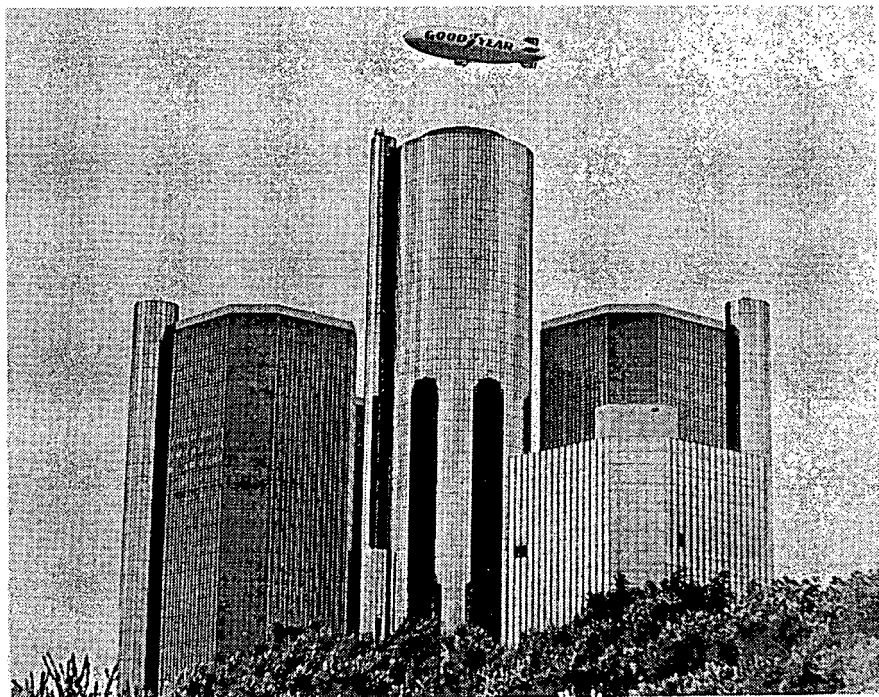
CONTENTS

FACULTY INVESTIGATORS.....	Inside covers
INTRODUCTION: ON THE DESIGN OF THE REPORT.....	5
DAS: ON THE OCCASION OF THE 37TH ANNUAL STUDY 1951 - 1988.....	7
PART I: BIBLIOGRAPHY BY AUTHOR.....	17
BOOKS.....	53
DISSERTATIONS.....	55
HISTORICAL ARTICLES AND REPORTS.....	59
PART II: ANNUAL DAS PROJECTS.....	61
Participants	
Publications and Papers	
Sample Description	
Documentation	
FOOTNOTES.....	112
ABBREVIATIONS.....	112
DIRECTORS.....	113

Availability of DAS Materials

Most of the published material will be available in the public domain: books should be ordered directly from publishers and published articles should be sought in library collections or directly from the author(s).

When those sources are unavailing, or when unpublished works are sought, it can be fruitful to write DAS for a copy of the material. If we have the item in our files and if it is relatively brief, we can provide material at current photocopy rates.



ON THE DESIGN OF THE REPORT

This report presents two facets of the DAS record over the 1951-1988 period -- an overall bibliography and a sketch of each annual project -- and laces some cross-references between the two parts.

Part I, the **BIBLIOGRAPHY BY AUTHOR**, is a record of publications, papers presented to professional meetings and a few selected unpublished manuscripts. We know that the record is not complete -- it is simply what we have been able to track down by sifting existing records and by sleuthing in correspondence with our faculty investigators and with some DAS students -- and we have reason to suspect that we are missing quite a bit. We know, for instance, that in the period 1953-1978 there have been 435 requests to use the DAS datasets that are archived in the Inter-university Consortium for Political and Social Research (ICPSR) at the University of Michigan. These requests are registered by the universities and colleges, rather than by individual researchers, however, so we have not been able to correspond with these users. It is our hope that this report will inspire readers to tell us what we missed (as well as what we got wrong).

From the Bibliography (and a few other sources) we have pulled out three types of entries and listed them separately:

Under **BOOKS** we have listed long publications based very substantially or exclusively on DAS data. We have not subsetted here either shorter monographs based on DAS data or books based on a variety of sources as well as DAS.

The **DISSERTATIONS**, except where otherwise identified, were written at the University of Michigan at various social science departments.

The **HISTORICAL ARTICLES AND REPORTS** are a small subset of papers or memos that have interpreted the DAS experience over time or have tallied some brief chronology.

In Part II, **ANNUAL DAS PROJECTS**, we sketch out four features of the annual research project: (1) the research topic and the participants (faculty, staff, and students); (2) the publications and papers based on the project data; (3) a description of the sample; and (4) documentation. The first topic, the title of the research subject, and the list of participants, is straightforward, but the other three topics invite a few comments.

In Publications and Papers we cite in short form a cross-reference to the **BIBLIOGRAPHY BY AUTHOR**. Where the reference builds on more than one DAS study, the citation is included with either the main year or the most recent year of data collection.

In Sample Description we include a response rate and a denominator on which it is calculated when we have been able to find that information. Where we show only a percentage value, that is all we had to go on.

In Documentation we have usually included two numbers. The DAS number is useful in-house; the ICPSR number is useful to those wishing to use DAS data

deposited in the ICPSR archive. DAS does not maintain its own public archive, but five years after data collection the annual data set is required by law to be accessible to public use. In this report we include ICPSR numbers only through 1978, but studies conducted in 1979-1982 will also soon be accessible through ICPSR.

The first three to five papers listed in the Documentation section are those of prime importance: the Sampling Memos describing the sample design; Reports to Respondents of preliminary findings that were sent back to the willing spirits who provided the data; and Coding Memos summarizing key procedures and measures of reliability. Here we do not always have the information that we need -- in some cases it was perhaps never set down and in other cases it has been lost. When we lack a copy of a key report, we call attention to that fact in the hope that a reader may happen to have a copy the document on file and send it to us.

The other items in Documentation are a miscellany that were used to inform the design of the study or to explore preliminary findings. We include all extant items -- even when they represent survey practices that have become dated -- in order to preserve the historical integrity of the DAS record.

For a more complete understanding of a given project, one should consult complete project files (including questionnaires, codebook, univariate marginals, and other materials) housed at the DAS office.

ON THE OCCASION OF THE 37th DETROIT AREA STUDY

Marking the 37th anniversary with special celebrations is not a widespread custom. DAS may have been breaking new ground in ritual observances, in fact, for the five editions of our research record have appeared on the occasion of the 4th, 9th, 18th, 25th, and now 37th study. The general term of this sequence eludes our in-house mathematicians but pleases our off-beat historians.

In that spirit of unorthodoxy, we would like to go beyond the boilerplate about DAS, and consider some of its changes over time, try to reckon some of its successes and failures, and speculate about its future. Be it said, what follows does not necessarily represent the views of other persons who have been associated with DAS.

DAS was established in 1951 at the University of Michigan as a "Training and Research Laboratory in the Community" -- meaning the Detroit area -- and carried out a survey each year, in which students participated through enrollment in a two-semester graduate level course. It was started under the administrative umbrella of the Survey Research Center (of ISR), where it was housed; and financed with seed money from the Ford Foundation, which supported DAS wholly until 1954-55 and then in part until 1958. In that year, the University assumed the regular budget of DAS, which was channeled through the Department of Sociology as an integral part of interdisciplinary graduate training. That has been the arrangement ever since, except that faculty investigators have often sought additional research grants to increase the number of interviews to reduce sampling error and strengthen the reliability of the conclusions.

In 1951, these were the three founding purposes:

To provide a research facility through which basic research can be conducted by social scientists at the University of Michigan

To provide an agency for training graduate students of the social sciences in basic research techniques

To make available social science data of value to the Detroit community (DAS, 1951).

Looking at these objectives in a very general way, it seems fair to conclude that the first purpose, faculty research, has been accomplished remarkably well, although not without narrowing the objective in certain respects over the years. It is more difficult to assess the DAS record on student training, but we shall consider some indicators at any rate. If we take the third objective of providing useful data to the Detroit community to mean taking active steps to get DAS data into the hands of Detroit area officials, influentials, and media people (rather than relying on osmosis), this last purpose, for quite understandable reasons, has simply fallen by the wayside.

I: The Research Component

In Celebration

There is much to crow about here. Faculty research has been produced in quantity, quality, and innovative designs. Results from almost every project have been reported in the public domain and some studies have truly flowered in copious publication. Seventy faculty investigators (two-thirds of them affiliated with the Department of Sociology) have shared in the conduct of the 37 studies; (Note 1) but many more scholars have joined in analysis and publication of the results. We have located a total of 398 titles (not counting reprints) based in some good part on DAS data or experience, written by a total of 214 authors. Eighteen of these works are books -- full-length works based very substantially or exclusively on DAS data or experience. Fifty-seven are doctoral dissertations. The remaining 323 works are published articles, book chapters, short monographs, books that include the use of DAS data among other sources, papers presented at professional meetings, and (a few) unpublished manuscripts. The collection is impressive for sheer volume, and we are dead certain that we have not located everything.

It seems likely, in fact, that we have missed some substantial number of publications and papers, for there have been 435 requests to use those DAS data sets that have been archived at the Inter-university Consortium for Political and Social Research (Note 2). Unfortunately we cannot write these users, for ICPSR identifies requests only by organizations, not individual scholars.

The collection is impressive, too, for the imaginative scholarship and scope of certain studies. For example, Robert O. Blood Jr.'s 1967 book, *Love Match and Arranged Marriage: A Tokyo-Detroit Comparison*, was an extension to Tokyo of his pioneering study of marriage in Detroit published as *Husbands and Wives: The Dynamics of Married Living*. In 1979, Robert E. Cole published *Work, Mobility, and Participation: A Comparative Study of American and Japanese Industry*, which was based first on Detroit and then on Yokohama. In 1987, Martin K. Whyte took his 1984 Detroit study of marriage customs and attitudes to partial replication in Chengdu, the capital city of Sichuan Province, China. The Detroit phase will soon be published as *Dating and Mating: The Evolving Basis of Marriage in Detroit*. Lee Hamilton and Joseph Sanders have been collaborating with their Japanese colleagues in an international extension of their 1977 DAS. Their book, *See No Evil: Wrongdoing and the Individual in Japan and the U.S.*, is forthcoming from Yale University Press.

The historic past of DAS has been mined for social indicators over time, as in Otis Dudley Duncan's project of 1971 that replicated a number of questions asked by DAS in the 1950's and 1960's. This study has yielded a large number of publications including *Social Change in a Metropolitan Community*, by Duncan, Schuman and Duncan. It has been scouted for changes in religious and child-rearing values, as in Duane Alwin's replication of Gerhard Lenski's DAS of 1958 published as *The Religious Factor*.

DAS has been pointed to future growth, serving as prolific seed corn. In 1962 DAS interviewed the first wave of respondents who have since been interviewed in six more waves by telephone over a 23-year period -- even into the second generation. This very productive panel, now known as the Study of American Families, was brought initially to DAS by Ronald Freedman and David Goldberg; its subsequent

waves have been conducted through the Survey Research Center of ISR (not DAS) and involved a number of other investigators as well (Note 3). Ronald Kessler's 1985 DAS study of stress in married couples was also the first wave of a panel, which has been continued at SRC, and seems likely to be another very productive and influential study.

DAS has experimented with survey methods, in such work as Schuman and Presser's "split sample" experiments in question form (1971, 1976, and 1986 projects); a dual-frame sampling design using telephone and residential addresses (Groves' work in 1977); and a study of race-of-interviewer effects (Schuman's 1968 project). Three times in recent years, DAS has incorporated "vignette analysis," which combines conventional survey techniques with an experimental factorial design in question content. (See Hamilton and Sanders 1977 study, Rauma 1986, and Birdsall 1988.) And there have been other studies of note.

In Reservation

Still, DAS research has not fulfilled every promise and hope. It has provided not a practicum in social research but an almost uninterrupted record of survey research of households in the greater Detroit area. Only now and then has it alternated or enriched the survey with other variants, such as small-group research, in-depth qualitative work, network analysis, etc. (Other Sociology courses have been developed to explore qualitative and historical methods.)

DAS has also chosen to stay with face-to-face interviewing. DAS typically provides class instruction in telephone sampling and interviewing but (with a rare exception) no hands-on experience. For the brief one-two weeks of the student field period, DAS sets up a temporary headquarters in Detroit, from which students still pound the neighborhood pavement in search of the selected address and the designated respondent and conduct the interview in the (turbulent or tranquil) household. There are good arguments for shifting to telephone interviewing -- lesser costs, lesser safety risks, more practical training for the current survey job market in which the telephone is now so common. But those who have argued that face-to-face interviewing provides the more vivid, involving, and richer educational experience have prevailed thus far. We happen to count ourselves in the latter camp, but the arguments on both sides are weighty, and the balance may tip.

By another set of choices, the annual DAS datasets have remained largely un-integrated. In 1953, it was assumed that the annual studies would be linked in "the accumulation of social data for a particular community rather than for a particular problem" (Freedman, 1953). But most DAS data have not cumulated; rather, the data exist largely in discrete chunks that indeed address a "particular problem," and sometimes use special, non-comparable samples (such as ever-married women, white male members of the labor force, parents of children aged 2 weeks to 17 years, etc.) and non-recurring questions. With some notable exceptions, DAS has not been designed to monitor trends, nor has it acquired the money or staff to organize and update the kind of archive that could stimulate the planning and publication of trend analysis.

Not by choice but by bad luck (opposition, indifference) and perhaps lack of skill in university politics, DAS has been afflicted with a shrinking sample size that now threatens its research capacity. Twenty years ago, with its regular university budget, DAS could expect to gather 700 interviews -- and more if the faculty

investigator found outside funds, too. Today we can expect to gather a N of 400. The reason is clear: increases to the DAS budget have been running with the tortoise while increases to inflation have ridden with the hare. Our budget has actually doubled from 1972 to 1988, rising from \$20,000 to \$40,000 for direct survey costs exclusive of teaching, but adjusted for inflation our 1988 budget is worth only about \$15,000 (Note 4).

An N of 400 brings DAS perilously close to designation as a pilot study rather than a medium-sized survey, and makes it really imperative (rather than just scientifically desirable) for faculty investigators to come to DAS armed with outside funds. But if that is to be so, it may be that no newcomers need apply. The faculty members most likely to garner outside research grants are experienced, senior researchers with national reputations. And one of the prides of DAS has been its ability to help launch younger faculty investigators in the research experience.

The jury is still out on how to cope with this state of affairs. And we shall return to some speculation on the future of DAS.

II: The Training of Students

The Teaching Intention and Practice

The idea of a practicum in survey research was the brainchild of Angus Campbell, then director of the Survey Research Center (SRC, later incorporated as part of a new Institute for Social Research, ISR). In 1950, SRC was new to the Michigan campus, having just set up shop in 1946, and some students wanted training in these new techniques which SRC was not equipped to provide. Certain faculty members in the social sciences felt that only a real survey practicum, not a textbook or "pretend" exercise in survey design, could provide apprentice experience and guidance in the whole complex survey operation. It could give students experience in the strengths and frailties of the survey method, and show them by example how to implement norms of professional quality.

The interdisciplinary project took shape under the leadership of sociologist Ronald Freedman, the first director. DAS was organized as a two-semester course that took students through the whole process of research design, sampling, questionnaire construction, pretesting, field interviewing, code construction and coding, corrections of error in the data, and finally an analysis paper of their own choosing, to be based on the data they helped collect. A total of 968 students have taken DAS, in the early years as a requirement for first-year Sociology students and in recent years on a more voluntary and interdisciplinary basis.

From the beginning it was recognized that students could not collect all the interviews: DAS contracted with SRC professional interviewers to collect about half the data; students did their half in mid-winter, between semesters, in a brief field period. But these early days were labor-intensive, to be sure. In the first DAS, 18 students averaged about 20 interviews each, which is double the expectation we have now. Perhaps there were Giants in the Earth in those days, but we also know that field conditions were more hospitable in the 1950s than they are now. The DAS refusal rate never exceeded 8% in the first ten years (Sharp, 1961:113). In 1988, our refusal rate was 22-23% -- and that level is just about par all over the national survey landscape. DAS students are decidedly less

productive now than they were in the 1950s, just as about every other field staff (outside of government) seems to be.

Students did have responsibility in the early years for all the coding. A good half of the second semester of the practicum went into code construction, coding, and correction of errors in the data. Once that was done, students were left with a mere 7-8 weeks to explore their data analysis paper. This extensive coding labor has been taken from the backs of students, and is now carried out at DAS over the summer by a small paid crew. This is possible because the schedule of the practicum has been changed. Students now go into the field at the end of the second university term, in late April and early May, and SRC interviewers continue to gather data over the summer. When DAS students return for the fall term of data analysis, they receive data fully coded and partially corrected and can begin to focus quite promptly on their analysis project.

Staff and Student Views

In the view of latter-day staff members DAS has managed, over time, to cut down student labor -- not only in coding but in other tasks, too -- to a level that is largely non-repetitive and educationally justified. Do students concur?

We cannot really say. We have some student evaluations on hand that provide some answers. In the recent past, DAS instruction has received decent marks on the standard College evaluation forms. Over the past six years, in 12 courses in data collection and data analysis (taught by a total of six different instructors) median student ratings ranged from 3.25 to 4.17 out of a possible 5.0, with an overall average of the 12 medians of 4.02 (Note 5.). A separate evaluation of the practical activities and training of the data collection semester, including the field season, has regularly gotten higher marks.

Otherwise, we have vignettes from both tails of the distribution. We get unsolicited testimonials from DAS alumni, such as Philip E. Converse of the Institute for Social Research ("Just about everything I have ever written from survey interview data has been usefully informed by my DAS experience taking real, live interviews with real, live people."). Or Diane Colasanto of the Gallup Organization ("My experience in DAS was extremely positive ... I would not be where I am today professionally if it weren't for DAS.") Or others who give DAS a rave notice at the time or report later that the value of DAS "grew" on them in their careers as some of the formal course work seemed to melt away and the actual research experience stuck to their ribs.

But that's not everybody. There are other unforgettables in the organizational memory, such as a recent student who whooped in from his last interview, "Thank God, I survived DAS!" (We didn't say it: "And DAS survived YOU!") Or the 1967 student who tried to lead a rebellion against interviewing in Detroit. (Why not in Ann Arbor or some other nice place closer to home?) Or the 1977 cohort that did go out on strike when an armed robbery made students very anxious about their own safety.

There has been no such turbulence in more recent years. But the notion that DAS is really just a sweatshop built on student labor for faculty profit gets good press among students now and then. In fact the implied economics are off: the total costs per student interview, counting all teaching, training, and development costs, is a good deal more than the per-interview costs we pay for professional

interviews. But it is true that the faculty investigator does not have to raise this budget from the College, and students get paid for their labors in the academic coin of course credit rather than anything more substantial. Never mind, students can feel exploited by DAS, and resentment can rise up quickly in years that staff or faculty appear insensitive or indifferent to the effort, time, and talent that students bring to the project.

Recent staff members have felt that their success in integrating students has varied by the activity as well as by the year. We have felt least successful in involving students in the process of questionnaire design. We have tried various strategies -- question-writing assignments, small group responsibility, always making questionnaire meetings open to students -- but none has seemed to truly engage most students in the process. It may be that most students do not bring enough sophistication or experience to the task of questionnaire design, or that staff has simply not found the magic. But for whatever reasons the faculty investigator and staff members (including teaching assistants) have dominated. Students have been very involved in pretesting and criticizing drafts of the questionnaire. They certainly see the example that the questionnaire is torn up again and tried again, three times over, anyway. And other parts of the survey, especially interviewing, are very involving of students. So a training process is at work even if we have not found a way to make room for all the cooks in the questionnaire kitchen. Someone may find it yet.

III: Service to the Community

This purpose of community service has remained what we might call a Latent Function. That DAS could and should provide the greater community with useful data sounds sensible enough -- until one considers the resources and the priorities that this would require. More or different staff, for starters. Such as someone responsible for learning what kinds of data the greater community needs and wants, and keeping up with changes in that agenda. Someone who could establish and maintain frequent contact with a large board or network of organizations or political/civic leaders in the city, consulting them, creating and sending them attractively packaged data, getting their suggestions for the next round of inquiry. Such a role in political/ community organization in a metropolitan center 50 miles away is not one for which most University of Michigan academics are well prepared. It would take some careful planning and selection.

A sample design of particular value for the community is another requirement. Such a sample would probably be a large cross-section, that would permit trend comparisons on a regular basis, along with perhaps special subsamples to explore problems in health, housing, unemployment, school conditions, whatever. Special archiving and analysis resources would be necessary to make data available on short notice. It is obvious that we are talking about more money to finance both new staff responsibility and activity, new sample designs, and new publication, even if these objectives could be harmonized with the goals of faculty research and student training -- which seems very unlikely. DAS has not provided much service to the Detroit community or to the State of Michigan for the deceptively simple reason that it has never been set up institutionally to do so. A service function could be the wave of the future but it would require substantial revamping and refinancing of DAS.

IV: The Future of DAS

Surveys and Archives

Over the lifetime of DAS, there have been two major events in survey research that have great implications for the future of DAS. First, survey research has grown from a tiny enterprise to a towering presence in social science. As Presser puts it, "few innovations in the social sciences rival the importance of the modern survey" (Presser 1984:93).

Presser gives us chapter and verse. Using a sample of leading journals over three time periods (1949-50, 1964-65, and 1979-80), he shows us the impact of surveys on four social science disciplines and one interdisciplinary field. As Table 1 shows (see next page), only in Social Psychology has the use of survey research stayed fairly slow and steady, with about 20% of sampled articles based on surveys at the three time periods. The other three disciplines show a boom in surveys, with Sociology the earliest and leading user. By 1950, one quarter of the sampled Sociology journal articles were already based on surveys; by 1965, just over half were; and in 1980, that level stayed steady. In Economics, use of the survey was modest (6%) and rose to approximately one-third of its articles. Political Science has shown the steepest growth, starting the lowest of all and rising to over a one-third use (3%, 19% and 35%). Finally, the curve of survey use in the interdisciplinary journal, *Public Opinion Quarterly*, started high and moved dramatically to over 90% of the sampled articles.

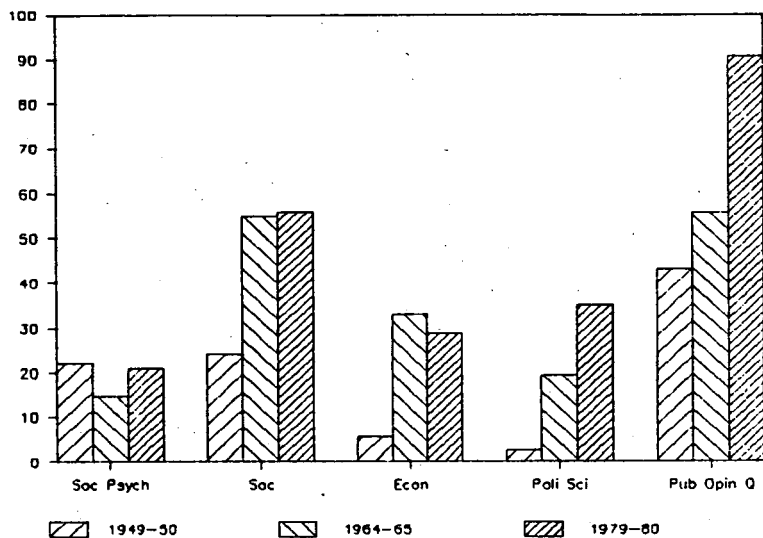
With this record of ascendance of the survey across disciplines, we should consider how DAS can meet the needs of a wider student and faculty community.

But, still, a second major event, the great growth of survey archives since the 1960s calls into question whether our practicum really need feature training in the DAS mode. There are now veritable mountains of survey data and students can burrow into them at relatively modest cost. Surely these great academic data sets (in ICPSR and NORC, especially) are wonderful sources for sophisticated instruction and rich experience in secondary data analysis. Is it really so important to take students through all the stages of primary survey data collection, given the time and expense?

We think so. The original rationale for hands-on experience in all phases of the survey seems quite as vital now, when we have secondary data in copious supply, as it was in the 1950s when we had almost none.

For the fact is that students do not really learn about the strengths and frailties of survey research by opening up a can of survey data and mixing it with a can of LISREL. They become sophisticated users of survey data by seeing how the abundant, untidy life of real respondents can grow like jungle over naive hopes for theory and crude attempts at measurement. By experiencing how vulnerable to error surveys can be at every stage of their development. By trying, themselves, to keep error at bay. In our view, the most gifted analysts in survey research have been those who have brought a kind of "hands-on" sense of how survey data work, and how they have to be constructed, and what they can reveal and what they often cannot: a blend of deep appreciation and tough-minded scrutiny of the strengths and frailties of survey research.

Table 1: Percent of Articles Using Survey Data



An Interdisciplinary Council for DAS

In our view, the moral of these two stories about survey growth is that DAS should go interdisciplinary, more self-consciously and systematically. In a sense, DAS has always been interdisciplinary: over the course of its history, one-third of its investigators have come from outside Sociology and the composition of its administrative committees have reflected some of the same catholic tastes in social sciences. But we mean "interdisciplinary" in a more thoroughgoing and permanent sense.

There is growing interdisciplinary interest from students and potential faculty investigators -- although DAS has not made any real outreach. Students in Natural Resources, Public Health, Population Planning, Education, Biometrics, Journalism etc. (none of which has a survey practicum of its own) have been inquiring about DAS and enrolling in ones and twos. This scatter of students from other fields represented, in fact, one third of the enrollment in last year's data collection semester. Their interest was not aroused because a member of their department was acting as DAS Faculty Investigator -- we have never had an FI from any of these departments -- nor did we make extraordinary effort to publicize DAS or recruit. Surveys, after all, are "in the air" everywhere. If we consider how important they are in just one field, epidemiology (and there, to take just a single subject, inquiry into AIDS), it seems safe to guess that the interdisciplinary demand for training in surveys will continue to grow, even without the "draw" of DAS faculty investigators from a broader interdisciplinary spectrum outside Sociology.

But there is such a "draw" this year, and there are very likely to be others, as we become more interdisciplinary. Steven J. Rosenstone, a political scientist, is the DAS faculty investigator for 1989, and the 13 graduate students coming into DAS from that department will bring the enrollment up again to at least 40, the highest level it has been since 1962. In fact, we are now having to cap enrollments for winter 1989 because the demand for training bids fair to exceed our resources.

It is this kind of interest that convinces us that DAS should take the lead in reconstituting itself formally as an interdisciplinary organization: one that is governed by and responsive to the faculties and students of the various departments that need surveys for their empirical research. Sociology, which has taken the lead in DAS since the beginning, should now take the lead in developing an Interdisciplinary Council for DAS formed by equally participating departments.

Interdisciplinary ventures are never simple, offering at least complication and sometimes friction too. Inevitably they take a tax of time and patience in continuing negotiations. But participating departments may well be ready to put up with such costs for the benefit of a viable and expanded survey research practicum that can better serve a wider group of students and faculty in the university community.

FOOTNOTES

1) While 60 different names are listed as faculty investigators, there are 70 investigators in all because seven of them have served more than once: Alwin, Eldersveld, Freedman, Goldberg, Landecker, Lenski and Swanson have all participated twice; Schuman has participated four times. Six of the seven repeat performers are affiliated with the Department of Sociology.

(2) Twenty-six DAS data sets (1953-1978) have been archived at ICPSR. Four more (1979-1982) will soon be deposited there.

(3) We have located 44 publications/papers based on various parts of the panel. They are all listed in the 1962 bibliography but if we arbitrarily weight them .5, and attributed to 1962 DAS only 22 publications, the total number of paper/publications is 376.

(4) The Bureau of Labor Statistics Consumer Price Index shows the value of the dollar from 1972 to 1988 in linear decline from .80 to less than .30 of the 1967 dollar.

(5) The one-hour proseminar in the intellectual background of the topic, which we have not discussed here, has received somewhat lower marks.

REFERENCES

Detroit Area Study (1951), statement of objectives, August 1, DAS historical archives.

Freedman, Ronald (1953). "The Detroit Area Study: A Training and Research Laboratory in the Community," *American Journal of Sociology* 19:30-33.

Presser, Stanley (1984), "The Use of Survey Data in Basic Research in the Social Sciences," in Charles F. Turner and Elizabeth Martin (eds.) *Surveying Subjective Phenomena* Vol. 2 (New York: Russell Sage Foundation).

Schuman, Howard (1977), "The Detroit Area Study after Twenty-five Years," *American Sociologist* 12:130-137.

Sharp, Harry (1961), "Graduate Training through the Detroit Area Study," *American Sociological Review* 26:110-114.

Part I:

BIBLIOGRAPHY BY AUTHOR

Note: The year of publication or presentation appears first in parentheses. The year (or years) of DAS data collection appears last, enclosed in asterisks. Where multiple years have been used, the year of the main data set is italicized. Subcollections of books, dissertations, historical documents, based in substantial part on DAS materials are identified by *BOOK*, *DISS*, and *HIST* and listed again separately.

Abowitz, Deborah A. (1985), "Consequences of Migration: Political Participation and Voluntary Group Activity in Detroit, MI. A Case Study," (Department of Sociology, Brown University). *DISS* *1975*

Abowitz, Deborah A. (1986a). "The Political Underclass: Evidence from a Study of Community Life and Politics," paper presented at the annual meetings of the American Sociological Association, New York City. *1975*

Abowitz, Deborah A. (1986b), "An Urban Underclass: Evidence from a Study of Community Life and Politics," paper presented at the annual meetings of the Population Association of America, San Francisco. *1975*

Abowitz, Deborah A. (1987) "Socio-Political Participation over the Life Course: The Effects of Social Context," paper presented at the annual meetings of the American Sociological Association, Chicago. *1975*

Abowitz, Deborah A. (1988a) "Socio-Political Participation and the Significance of Social Context," paper presented at the Department of Sociology, Tulane University. *1975*

Abowitz, Deborah A. (1988b) "Socio-Political Participation and Gender Roles," paper presented at the annual meetings of the American Sociological Association, Atlanta. *1975*

Abowitz, Deborah A. (Under review-a) "The Effects of Age and Context on Political Participation: New Evidence on an Old Theme." *1975*

Abowitz, Deborah A. (Under review-b) "Socio-Political Participation and the Significance of Social Context: A Model of Competing Interests and Obligations." *1975*

Aiken, Michael Thomas (1964), "Kinship in an Urban Community," (Department of Sociology). *DISS* *1955*

Alwin, Duane F. (1984a), "Trends in Parental Socialization Values: Detroit, 1958-1983," *American Journal of Sociology* 90:359-382. *1958, 1971*

BIBLIOGRAPHY BY AUTHOR

- Alwin, Duane F. (1984b), "Education, Occupation and Parental Values," paper presented at a conference on "Social and Moral Values: Development, Organization and Change," sponsored by the Polish Academy of Sciences in Zaborow, Poland. *1958, 1971*
- Alwin, Duane F. (1986), "Religion and Parental Child-Rearing Orientations: Evidence of a Catholic-Protestant Convergence," *American Journal of Sociology* 92:412-440. *1982*
- Alwin, Duane F. (1988), "Social Stratification, Conditions of Work and Parental Socialization Values," in N. Eisenberg, J. Reykowski, E. Staub (eds.), *Social and Moral Values: Individual and Societal Perspectives* (New York: Erlbaum). *1982*
- Alwin, Duane F. (Forthcoming), "Historical Changes in Parental Orientations to Children," *Sociological Studies of Child Development*, vol. 3. *1982*
- Alwin, Duane F. and Arland Thornton (1984), "Family Origins and the Schooling Process: Early versus Late Influence of Parental Characteristics," *American Sociological Review* 49:784-802. *1962*
- Alwin, Duane F. See also Freedman, D., et al. (Forthcoming); Thornton, et al. (1983), (1986).
- Angell, Robert C. (1962), "Preferences for Moral Norms in Three Problem Areas," *American Journal of Sociology* 67:650-660. *1956*
- Anton, Thomas J. and Bruce D. Bowen (1976), "Toward a Clarification of Citizen 'Satisfaction' with Metropolitan Public Services," paper presented at the Annual Meeting of the American Political Science Association, Chicago. *1975*
- Arber, Sara. See Mason, et al., (1976).
- Aseltine, Robert H. Jr. See Schuster, et al. (1988)
- Attah, Ernest B. (n.d.), "Some Aspects of Nonresponse in a Metropolitan Survey Sample," unpublished MS. *1967*
- Axelrod, Morris (1953), "A Study of Formal and Informal Group Participation in a Large Urban Community," (Department of Sociology). *DISS* *1952*
- Axelrod, Morris (1954), "Formal and Informal Group Participation," paper presented at the meetings of the American Association for the Advancement of Science, 1954, Berkeley, California. *1952*
- Axelrod, Morris (1956), "Urban Structure and Social Participation," *American Sociological Review* 21:13-18. Reprinted in Freedman et al. (eds.), *Principles of Sociology* (New York: Henry Holt, 1956); and in Hatt and Reiss (eds.), *Reader in Urban Sociology* (Glencoe, IL: The Free Press, 1957). *1952*
- Axelrod, Morris (1970), "Coordination and Cooperation Among Survey Research Groups," paper presented at the meetings of the American Statistical Association, 1970.

BIBLIOGRAPHY BY AUTHOR

- Axelrod, Morris. See also Freedman, R. and Axelrod (1952); Sharp and Axelrod (1956).
- Baldassare, Mark (1975a), "The Effects of Density on Social Behavior and Attitudes," *American Behavioral Scientist* 18:815-825. *1966*
- Baldassare, Mark (1975b), "Residential Density, Local Ties and Neighborhood Attitudes: Are the Findings of Microstudies Generalizable to Urban Areas?" *Sociological Symposium* 14:92-102. *1966*
- Baldassare, Mark (1977), "Residential Density, Household Crowding and Social Networks," in Claude S. Fischer, et al., *Networks and Places: Social Relations in the Urban Setting* (New York: The Free Press). *1966*
- Baldassare, Mark and Claude S. Fischer (1975), "Suburban Life: Powerlessness and Need for Affiliation," *Urban Affairs Quarterly* 10:314-326. *1966*
- Barnabas, A.P. See Eldersveld et al. (1968).
- Bashur, Rashid Lutfallah (1962). "The Influence of Ecological Factors on Values in the Detroit Area." (Department of Sociology). *DISS* *1956*
- Beck, Allen. See Goldberg, et al. (1980); Smith, H., et al. (1981)
- Belanoff, Sidney (1954). "The Relationship Between Political Participation and Socio-Political Integration," (Department of Political Science). *DISS* *1952*
- Bernstein, J. See Litwak, et al. (1970).
- Besanceney, Paul H. (Fr.) (1962), "Unbroken Protestant-Catholic Marriages Among Whites in the Detroit Area." *American Catholic Sociological Review* 23:3-20. *1959*
- Besanceney, Paul H. (Fr.) (1963), "Factors Associated with Protestant-Catholic Marriages in the Detroit Area: A Problem in Social Control." (Department of Sociology and Anthropology, Michigan State University). *DISS* *1959*
- Besanceney, Paul H. (Fr.) (1965a), "Interfaith Marriages of Catholics in the Detroit Area," *Sociological Analysis* 26:38-44. *1955, 1958, 1959, 1962*
- Besanceney, Paul H. (Fr.) (1965b), "On Reporting Rates of Intermarriage," *American Journal of Sociology* 70:717-721. *1955, 1958, 1959*
- Besanceney, Paul H. (Fr.) (1970), *Interfaith Marriages: Who and Why* (New Haven, CT: College and University Press). *BOOK* *1955, 1958, 1959, 1962*
- Bianchi, Suzanne. See Farley, et al. (1978), (1979).
- Blood, Robert O., Jr. (1958). "The Division of Labor in City and Farm Families," *Marriage and Family Living* 20:170-174. *1955*
- Blood, Robert O., Jr. (1963), "The Husband-Wife Relationship," in F. Ivan Nye and Lois W. Hoffman (eds.), *The Employed Mother in America* (Chicago: Rand McNally). *1955*

BIBLIOGRAPHY BY AUTHOR

- Blood, Robert O., Jr. (1964), "Impact of Urbanization on American Family Structure and Functioning," *Sociology and Social Research* 49:5-16. *1955*
- Blood, Robert O., Jr. (1967), *Love Match and Arranged Marriage: A Tokyo-Detroit Comparison*. (New York: The Free Press) *BOOK* *1955*
- Blood, Robert O., Jr. and Donald M. Wolfe (1960), *Husbands and Wives: The Dynamics of Married Living* (New York: The Free Press). *BOOK* *1955*
- Blood, Robert O., Jr. and Donald M. Wolfe (1969), "Negro-White Differences in Blue-Collar Marriages in a Northern Metropolis," *Social Forces* 48:59-64. *1955*
- Bloom, Jack (1958), "Child Training and Stuttering." (Department of Speech). *DISS* *1953*
- Bobo, Lawrence (1981), "Racial Alienation, Class Identification and Question Wording: The Case of Detroit Blacks." paper presented at the 36th Annual Conference of the American Association for Public Opinion Research, Buck Hill Falls, PA; and received the 1981 AAPOR Student Paper Award. A revised manuscript (n.d.) is entitled "Measuring Subjective Social Class: The Impact of Race, Question Form, and Racial Alienation." *1976*
- Bobo, Lawrence. See also Schuman, et al. (1985).
- Bolger, Niall, Anita DeLongis, Ronald C. Kessler, and Elaine Wethington (Forthcoming-a), "The Contagion of Stress Across Multiple Roles," *Journal of Family and Marriage*. *1985*
- Bolger, Niall, Anita DeLongis, Ronald C. Kessler, and Elaine Wethington (Forthcoming-b) "The Microstructure of Daily Role-Related Stress in Married Couples," in J. Eckenrode and S. Gore (eds.), *Crossing the Boundaries: The Transmission of Stress Between Work and Family* (New York: Plenum). *1985*
- Bowen, Bruce D. See Anton and Bowen (1976).
- Brannon, Robert (1973), "Comparison of Expressed Attitudes and Observed Behavior, in the Area of Race Relations," (Department of Psychology). *DISS* *1969*
- Brannon, Robert, Gary Cyphers, Sharlene Hesse, Susan Hesselbart, Roberta Keane, Howard Schuman, Thomas Viccaro, and Diana Wright (1973), "Attitude and Action: A Field Experiment Joined to a General Population Survey," *American Sociological Review* 38:625-636. *1969*
- Brazer, Harvey E. (1962), "Some Fiscal Aspects of Metropolitanism," in Guthrie S. Birkhead (ed.), *Metropolitan Issues: Social, Governmental, Fiscal* (Syracuse, NY: Maxwell Graduate School of Citizenship and Public Affairs of Syracuse University). Also in Benjamin Chinitz (ed.), *City and Suburb* (Englewood Cliffs, NJ: Prentice-Hall, 1965) and Brookings Reprint No. 61. *1959*
- Brody, Charles. See Duncan, O., et al. (1982).

BIBLIOGRAPHY BY AUTHOR

Bumpass, Larry L. (1967), "Stability and Change in Family Size Expectations Over the First Two Years of Marriage," *Journal of Social Issues* 23:83-98. *1962*

Bumpass, Larry L.. See also Freedman, R., et al. (1965).

Burk, James S. See Laumann and Burk (1979).

Callahan, Jay. See Turnbull et al. (1988).

Camburn, Donald. See Freedman, D., et al. (1979), (1980), (Forthcoming); Thornton and Camburn (1987), (1988); Thornton, et al. (1982), (1983), (1986).

Campanelli, Pamela (1987), "Context Effects: Do Open vs. Closed Questions Influence Respondents' Answers to Subsequent Questions?" awarded Honorable Mention in the 1987 competition for AAPOR Student Award. *1976, 1986*

Cannell, Charles F. and Harry Sharp (1958), "The Impact of the 1955-56 Detroit Newspaper Strike," *Journalism Quarterly* 35:26-35. *1956*

Casterline, John B. (1977), "Demographic Correlates of Attitudes Towards Busing and School Integration: Detroit, 1976," *Proceedings of the Social Statistics Section, American Statistical Association* 1:448-453. Also appearing as University of Michigan Population Studies Center Reprint 156. *1976*

Clark, Melissa A.H. (1980), "Female Labor Force Attachment During the Childbearing and Child Rearing Years," (Department of Sociology). *DISS* *1962, 1963, 1966*

Cohen, Wilbur J., Charles N. Poskanzer and Harry Sharp (1960), "Attitudes Toward Governmental Participation in Medical Care," in *Health Needs of the Aged and Aging* Hearings before the Subcommittee on Problems of the Aged and Aging, Committee on Labor and Public Welfare, U.S. Senate. *1957*

Colasanto, Diane L. (1977), "The Prospects for Racial Integration in Neighborhoods: An Analysis of Residential Preferences in the Detroit Metropolitan Area," (Department of Sociology). *DISS* *1976*

Colasanto, Diane. See also Farley and Colasanto (1980); Farley, et al. (1978), (1979).

Cole, Robert E. (1979), *Work, Mobility and Participation: A Comparative Study of American and Japanese Industry* (Berkeley, CA: University of California Press). *BOOK* *1970*

Converse, Jean M. and Stanley Presser (1986), *Survey Questions: Handcrafting the Standardized Questionnaire* (Beverly Hills, CA: Sage University Papers). *BOOK* *1980s*

Converse, Jean, M. and Howard Schuman (1974), *Conversations at Random: Survey Research as Interviewers See It* (Ann Arbor: Institute for Social Research). *BOOK* *1966-1969*

Converse, Jean M. See also Schuman and Converse (1971).

BIBLIOGRAPHY BY AUTHOR

Coombs, Clyde H. See Goldberg and Coombs, C. (1963).

Coombs, Lolagene (1974), "The Measurement of Family Size Preferences and Subsequent Fertility," *Demography* 11:587-611. *1962*

Coombs, Lolagene (1978), "How Many Children do Couples Really Want?" *Family Planning Perspectives* 10:303-308. *1962*

Coombs, Lolagene (1979), "Reproductive Goals and Achieved Fertility: A Fifteen-Year Perspective," *Demography* 16:523-534. *1962*

Coombs, Lolagene and Ronald Freedman (1964), "Use of Telephone Interviews in a Longitudinal Fertility Study," *Public Opinion Quarterly* 28:112-117. *1962*

Coombs, Lolagene and Ronald Freedman (1967), "Expected Family Size and Family Growth Patterns: A Longitudinal Study," *Demografia* 10:350-364. Reprinted in E. Szabady (ed.), *World Views of Population Problems* (Budapest: Hungarian Academy of Science, 1968). *1962*

Coombs, Lolagene and Ronald Freedman (1970a), "Enquetes Repetees sur la Fecondite: Problemes et Possibilites," *Population et Famille* 20:1-19. *1962*

Coombs, Lolagene and Ronald Freedman (1970b), "Pre-Marital Pregnancy, Child-Spacing, and Later Economic Achievement," *Population Studies* 24:389-412. *1962*

Coombs, Lolagene and Ronald Freedman (1970c), "Social and Economic Correlates of Family Building Patterns in Detroit," report to the U.S. Dept. of Health, Education and Welfare. *1962*

Coombs, Lolagene and Z. Zumeta (1970), "Correlates of Marital Dissolution in a Prospective Fertility Study," *Social Problems*, 18 *1962*

Coombs, Lolagene, Ronald Freedman, and D.N. Namboothiri (1969), "Inferences About Abortion from Foetal Mortality Data," *Population Studies* 23:247-265. *1962*

Coombs Lolagene, Ronald Freedman, Judith Friedman and W.F. Pratt (1970), "Premarital Pregnancy and Status Before and After Marriage," *American Journal of Sociology* 75:800-820. *1962*

Coombs, Lolagene. See also Freedman, R. and Coombs, L. (1966a), (1966b); Freedman, R., et al. (1965), (1966).

Cramer, M. Richard and Howard Schuman (1975), "We and They: Pronouns as Measures of Political Identification and Estrangement," *Social Science Research* 4:231-240. *1971*

Crane, Marie, Melvin Manis, Steven S. Martin, Cynthia Robbins, and Howard Schuman (1979), "Attitudes vs. Behavior Versus Behavior vs. Behavior," paper presented at the American Sociological Association meetings, Boston. *1977*

Curtis, Richard F. (1958), "Consequences of Occupational Mobility in a Metropolitan Community." (Department of Sociology). *DISS* *1956*

BIBLIOGRAPHY BY AUTHOR

- Curtis, Richard F. (1959a). "Note on Occupational Mobility and Union Membership in Detroit: A Replication," *Social Forces* 38:69-71. *1952-56*
- Curtis, Richard F. (1959b). "Occupational Mobility and Urban Social Life," *American Journal of Sociology* 65:296-298. *1952, 1955*
- Curtis, Richard F. (1959c). "Occupational Mobility and Membership in Formal Voluntary Associations: A Note on Research," *American Sociological Review* 24:846-848. *1954*
- Curtis, Richard F. (1960a). "Income and Occupational Mobility," *American Sociological Review* 25:727-730. *1952-1957*
- Curtis, Richard F. (1960b). "Occupational Mobility and Church Participation," *Social Forces* 38:315-319. *1952, 1954, 1955*
- Cutler, Stephen J. (1969). "Membership in Voluntary Associations and the Theory of Mass Society," (Department of Sociology). *DISS* *1966*
- Cutler, Stephen J. (1973). "Voluntary Association Membership and the Theory of Mass Society," ch. 7 in Edward O. Laumann. (ed.) *Bonds of Pluralism: The Form And Substance of Urban Social Networks* (New York: Wiley-Interscience). *1966*
- Cutler, Stephen J., and Robert L. Kaufman (1975). "Cohort Changes in Political Attitudes: Tolerance of Ideological Nonconformity," *Public Opinion Quarterly* 34:69-81. *1966*
- Cyphers, Gary. See Brannon, et al. (1973).
- Czajka, John L. See Mason, et al. (1976).
- David, Elizabeth Ann Jane (1960). "Public Preference and the Tax Structure: An Examination of Factors Related to State and Local Tax Preferences." (Department of Economics). *DISS* *1959*
- David, Elizabeth Likert (1967). "Public Preferences and State-Local Taxes." in Brazer, Harvey E. (ed.) *Essays in State and Local Finance*, (Ann Arbor: Institute of Public Administration, The University of Michigan). *1959*
- Delany, William (1957). "Bureaucrat and Citizen: A Study of Governmental Bureaucracies in a Metropolitan Setting." (Department of Sociology). *DISS* *1954*
- Delany, William. See also Janowitz and Delany (1957); Janowitz, et al. (1958).
- DeLongis, Anita. See Bolger, et al. (Forthcoming-a;b); Kessler et al. (1988)
- De Vos, Susan (1980). "Women's Role Orientation and Expected Fertility: Evidence From the Detroit Area, 1978," *Social Biology* 27:130-137. Also appearing in University of Michigan Population Studies Center Reprint 199. *1978*

BIBLIOGRAPHY BY AUTHOR

Dodge, Richard W. (1953). "Some Aspects of the Political Behavior of Labor Union Members in the Detroit Metropolitan Area." (Department of Political Science). *DISS* *1952*

Duncan, Beverly and Otis D. Duncan (1978). *Sex Typing and Social Roles* (New York: Academic Press). *BOOK* *1953-59, 1971, 1976*

Duncan, Beverly and Mark Evers (1975). "Measuring Change in Attitudes Toward Women's Work," in K.C. Land and S. Spilerman (eds.), *Social Indicator Models* (New York: Russell Sage Foundation). *1956, 1971*

Duncan, Beverly. See also Duncan, O., et al. (1972), (1973).

Duncan, Otis D. (1974). "Developing Social Indicators," *Proceedings of the National Academy of Sciences* 71:5096-5102. *1971*

Duncan, Otis D. (1975a), "Measuring Social Change Via Replication of Surveys," ch. 5 in K.C. Land and S. Spilerman (eds.), *Social Indicator Models* (New York: Russell Sage Foundation). *1971*

Duncan, Otis D. (1975b). "Does Money Buy Satisfaction?" *Social Indicators Research* 2:267-274. *1955, 1971*

Duncan, Otis D. (1975c). "Partitioning Polytomous Variables in Multiway Contingency Analysis." *Social Science Research* 4:167-182. *1953, 1956, 1971*

Duncan, Otis D. (1979a). "Constrained Parameters in a Model for Categorical Data." *Sociological Methods and Research* 8:57-68. *1971*

Duncan, Otis D. (1979b). "Indicators of Sex Typing: Traditional and Egalitarian, Situational and Ideological Responses." *American Journal of Sociology* 85:251-260. *1971, 1976*

Duncan, Otis D. (1979c). "Recent Cohorts Lead Rejection of Sex Typing," *Sex Roles* 8:127-133. *1976*

Duncan, Otis D. (1982). "Rasch Measurement and Sociological Theory," Hollingshead Lecture, Yale University, unpublished. *1971*

Duncan, Otis D. (1983). "On a Dynamic Response Model of W.F. Kempf," *Social Science Research* 12:393-400. *1971*

Duncan, Otis D. (1984). "Rasch Measurement in Survey Research: Further Examples and Discussion," ch. 12 in Charles F. Turner and Elizabeth Martin (eds.), *Surveying Subjective Phenomena* Vol. 2 (New York: Russell Sage Foundation). *1971*

Duncan, Otis D. (1985). "Generations, Cohorts, and Conformity," in William M. Mason and Stephen E. Fienberg (eds.), *Cohort Analysis in Social Research: Beyond the Identification Problem* (New York: Springer-Verlag). *1956, 1971, 1976*

BIBLIOGRAPHY BY AUTHOR

Duncan, Otis D. and David L. Featherman (1972), "Psychological and Cultural Factors in the Process of Occupational Achievement," *Social Science Research* 1:121-145. *1966*

Duncan, Otis D. and James A. McRae, Jr. (1979), "Multiway Contingency Analysis with a Scaled Response or Factor," in Karl F. Schuessler (ed.), *Sociological Methodology* 1979. *1971*

Duncan, Otis D. and Howard Schuman (1976), "An Experiment on Order and Wording of Attitude Questions," unpublished MS.. *1971*

Duncan, Otis D. and Howard Schuman (1980), "Effects of Question Wording and Context: An Experiment with Religious Indicators," *Journal of the American Statistical Association* 75:269-275. *1971*

Duncan, Otis D., David L. Featherman and Beverly Duncan (1972), *Socioeconomic Background and Achievement* (New York: Seminar Press). *1966*

Duncan, Otis D., David L. Featherman and Janet T. Spence (1979), "Sex Typing and Achievement in American Women," (panel discussion) *Bulletin of the American Academy of Arts and Sciences* 32:19-36. *1971*

Duncan, Otis D., Howard Schuman and Beverly Duncan (1973), *Social Change in a Metropolitan Community* (New York: Russell Sage Foundation). *BOOK* *1971*

Duncan, Otis D., Douglas M. Sloane and Charles Brody (1982), "Latent Classes Inferred From Response-Consistency Effects," ch. 2 in K. Joreskog and H. Wold (eds.), *Systems Under Indirect Observation Part I* (Amsterdam: North-Holland Publishing Co.). *1953, 1958, 1971*

Duncan, Otis D. See also Duncan, B. and Duncan O.D. (1976); Schuman and Duncan, O.D. (1974), (1976).

Eberts, Paul Robert (1963), "Family Life Cycle and Community Involvement," (Department of Sociology). *DISS* *1959*

Eldersveld, Samuel J. (1957), *Political Affiliation in Metropolitan Detroit* (Ann Arbor: Institute of Public Administration), (With assistance of Ronald Freedman, R.W. Dodge and Sidney Belanoff.) *BOOK* *1952*

Eldersveld, Samuel J. (1960), "Local Party Activities," and "Politics and Partisan Propaganda," in Sybil Stokes and Lynn Eley (eds.), *The 1959 Summer Institute in Practical Partisan Politics* (Ann Arbor: Institute of Public Administration). *1957*

Eldersveld, Samuel J. (1964), *Political Parties: A Behavioral Analysis* (Chicago: Rand McNally and Co.). *1957*

Eldersveld, Samuel J. (1965), "Bureaucratic Contact with the Public in India -- Some Preliminary Findings in Delhi State," *The Indian Journal of Public Administration* 11:216-235. *1954*

BIBLIOGRAPHY BY AUTHOR

Eldersveld, Samuel J. (1966). "Motivational Diversity in the Party Hierarchy." in Heinz Eulau (ed.). *Political Behavior in America -- New Directions* (New York: Random House). pp. 435-465. *1957*

Eldersveld, Samuel J. (1982). *Political Parties in American Society* (New York: Basic Books). *1957*

Eldersveld, Samuel J. (1983). "Motivations for Party Activism: Multinational Uniformities and Differences," *International Political Science Review*, January. *1957*

Eldersveld, Samuel J. (1986). "The Party Activist in Detroit and Los Angeles: A Longitudinal View. 1956-1980," in William Crotty (ed.), *Political Parties in Local Areas* (University of Tennessee Press). *1957*

Eldersveld, Samuel J., V. Jagannadham and A.P. Barnabas (1968). *The Citizen and the Administrator in a Developing Democracy: An Empirical Study in Delhi State* (Chicago: Scott Foresman, and New Delhi, India: Indian Institute of Public Administration). *1954*

Eldersveld, Samuel J. See also Katz and Eldersveld (1961).

English, Richard (1970). "Educational Aspirations of Black and White Youth." (Department of Sociology and School of Social Work). *DISS* *1963. 1968*

Evers, Mark (1974). "Changes in Subjective Social Class Identification in Detroit Between the 1950s and 1971." (Department of Sociology). *DISS* *1953, 1956, 1957, 1971*

Evers, Mark. See also Duncan, B. and Evers (1975).

Farley, Reynolds and Diane L. Colasanto (1980). "Racial Residential Segregation: Is It Caused by Misinformation About Housing Costs?" *Social Science Quarterly* 61:623-637. *1976*

Farley, Reynolds, Suzanne Bianchi and Diane L. Colasanto (1979). "Barriers to the Racial Integration of Neighborhoods: The Detroit Case." *Annals of the American Academy of Political and Social Science* 441:97-113. Also appearing as University of Michigan Population Studies Center Reprint 175. *1976*

Farley, Reynolds, Shirley Hatchett and Howard Schuman (1979). "A Note on Changes in Black Racial Attitudes in Detroit, 1968-1976," *Social Indicators Research* 6:439-443. *1968, 1971, 1976*

Farley, Reynolds, Howard Schuman, Suzanne Bianchi, Diane L. Colasanto and Shirley Hatchett (1978). "Chocolate City, Vanilla Suburbs: Will the Trend Toward Racially Separate Communities Continue?" *Social Science Research* 7:319-344. Also appearing as University of Michigan Population Studies Center Reprint 174. *1976*

Farley, Reynolds. See also Hermalin, A. and Farley (1973).

Fauman, S. Joseph and Harry Sharp (1958). "Presenting the Results of Social Research to the Public." *Public Opinion Quarterly* 22:107-115. *1956*

BIBLIOGRAPHY BY AUTHOR

- Featherman, David L. See Duncan, O. and Featherman (1972); Duncan, O., et al. (1972), (1979).
- Featherston, Fran Alleen (1982), "Neighbors and Communities: Political Participation in Local Arenas," (Department of Political Science.) *DISS* *1975*
- Feldt, Allan. See Sharp and Feldt (1959).
- Ferman, Patricia Ryan (1968), "Kinship and Fertility," (Department of Sociology). *DISS* *1962*
- Fields, James M. (1971a), "Perceptions of Others' Opinions in a City and Its Neighborhoods," (Department of Sociology). *DISS* *1956, 1969*
- Fields, James M. (1971b), "The Sample Cluster: A Neglected Data Source," *Public Opinion Quarterly* 34:593-603. *1968*
- Fields, James M. and Howard Schuman (1976), "Public Beliefs About the Beliefs of the Public," *Public Opinion Quarterly* 40:427-448. *1956, 1969, 1971*
- Finifter, Ada W. (1974), "The Friendship Group as a Protective Environment for Political Deviants," *American Political Science Review* 68:607-625. Reprinted in Robert T. Golembiewski, (ed.) *The Small Group in Political Science: The Last Two Decades of Development* (Athens: University of Georgia Press, 1978). *1961*
- Fischer, Claude S. and Robert Max Jackson (1976), "Suburbs, Networks and Attitudes," in B. Schwartz (ed.), *The Changing Face of the Suburbs* (Chicago: University of Chicago Press), pp. 279-306. *1966*
- Fischer, Claude S., Robert Max Jackson et al. (1977). *Networks and Places: Social Relations in the Urban Setting* (New York: The Free Press). *1966*
- Fischer, Claude S., See also Baldassare and Fischer, C. (1975).
- Fischer, Elizabeth (Martin) (1974a), "Change in Anomie in Detroit from the 1950s to 1971," (Department of Sociology). *DISS* *1956, 1958, 1959, 1971*
- Fischer, Elizabeth (Martin) (1974b), "Anomie and Social Participation," unpublished MS. *1971*
- Fischer, Elizabeth. See also Martin, Elizabeth.
- Fischer, Robert D. See House and Fischer, R. (1971).
- Foote, Andrea (1973), "Occupational Mobility and the Job Change: Channels of Job Information in the Detroit Area," (Department of Sociology). *DISS* *1970*
- Freedman, Deborah S. and Arland Thornton (1979), "The Long-Term Impact of Pregnancy at Marriage on the Family's Economic Circumstances," *Family Planning Perspectives* 11:6-21. *1962*
- Freedman, Deborah S. and Arland Thornton (1982), "Income and Fertility: The Elusive Relationship," *Demography* 19:65-78. *1962*

BIBLIOGRAPHY BY AUTHOR

- Freedman, Deborah S., Arland Thornton and Donald Camburn (1979). "Maintaining Response Rates in Longitudinal Studies: The Care and Nurture of Respondents." *Asian and Pacific Census Forum* 5:1-8. *1962*
- Freedman, Deborah S., Arland Thornton and Donald Camburn (1980). "Maintaining Response Rates in Longitudinal Studies," *Sociological Methods and Research* 9:87-98. Also appearing as University of Michigan Population Studies Center Reprint 191. *1962*
- Freedman, Deborah S., Arland Thornton and L. Wallisch (1981). "Age at First Birth and Family Size: Evidence from a Longitudinal Study," *Social Biology* 28:217-227. *1962*
- Freedman, Deborah S., Arland Thornton, Donald Camburn, Duane F. Alwin and L. Young-Demarco (Forthcoming). "The Life History Calendar: A Technique for Collecting Retrospective Data," *Sociological Methodology*. *1962*
- Freedman, Deborah S. See also Thornton and Freedman, D. (1979a), (1979b), (1982); Freedman R. et al. (1980); Thornton, et al. (1982), (1984).
- Freedman, Ronald (1953). "The Detroit Area Study: A Training and Research Laboratory in the Community," *American Journal of Sociology* 69:30-33. *HIST*
- Freedman, Ronald and Morris Axelrod (1952). "Who Belongs to What in a Great Metropolis?" *Adult Leadership* 1:6-9. Reprinted in O'Brien, Schrag and Martin (eds.), *Readings in General Sociology* (New York: Houghton-Mifflin, 1957). *1952*
- Freedman, Ronald and Lolagene C. Coombs (1966a). "Childspacing and Family Economic Position," *American Sociological Review* 31:631-648. *1962*
- Freedman, Ronald and Lolagene C. Coombs (1966b). "Economic Considerations in Family Growth Decisions," *Population Studies* 20:197-222. Reprinted in S.M. Pyun (ed.), *Population Problems in Developing Countries* (Seoul, Korea: Institute of Population Problems, 1967). *1962*
- Freedman, Ronald and Harry Sharp (1954). "Correlates of Values About Ideal Family Size in the Detroit Metropolitan Area," *Population Studies* 8:35-45. *1952*
- Freedman, Ronald, Lolagene C. Coombs and Larry L. Bumpass (1965). "Stability and Change in Expectations About Family Size: A Longitudinal Study," *Demography* 2:250-275. *1962*
- Freedman, Ronald, Lolagene C. Coombs and Judith Friedman (1966). "Social Correlates of Fetal Mortality," *Milbank Memorial Fund Quarterly* 44:327-344. *1962*
- Freedman, Ronald, Deborah S. Freedman and Arland Thornton (1980). "Changes in Fertility Expectations and Preferences Between 1962 and 1977: Their Relation to Final Parity," *Demography* 17:365-378. Also appearing as University of Michigan Population Studies Center Reprint 186. *1962*

BIBLIOGRAPHY BY AUTHOR

Freedman, Ronald, David Goldberg and Harry Sharp (1955), "'Ideals' About Family Size in the Detroit Metropolitan Area: 1954," *Milbank Memorial Fund Quarterly* 33:187-197. *1952, 1954*

Freedman, Ronald, David Goldberg and Doris Slesinger (1963), "Current Fertility Expectations of Married Couples in the United States," *Population Index* 29:366-391. *1955, 1960, 1962*

Freedman, Ronald. See also Coombs, L. and Freedman, R. (1964), (1967), (1970a), (1970b) (1970c); Coombs, L. et al. (1969), (1970); Goldberg, D., et al. (1959); Thornton, et al. (1984).

Friedman, Albert (1963), "Traditionalism and the American Creed Under Contemporary Gemeinschaft and Gesellschaft Conditions: An Empirical Study in the Sociology of Knowledge," (Department of Sociology). *DISS* *1956*

Friedman, Judith. See Coombs L., et al. (1970); Freedman, R., et al. (1966).

Gamson, William A. and Andre Modigliani (1966), "Knowledge and Foreign Policy Opinions: Some Models for Consideration," *Public Opinion Quarterly* 30:187-199. Reprinted in Louis Kriesberg (ed.), *Social Processes in International Relations: A Reader* (Appleton-Century-Crofts, 1968); and in Naomi Rosenbaum (ed.), *Readings in International Political Behavior* (Prentice-Hall, 1968). *1964*

Gebler, Nancy. See Grassmick, Nancy.

Gold, Martin and Carol Slater (1958), "Office, Factory, Store -- and Family: A Study of Integration Setting," *American Sociological Review* 23:64-74. *1955*

Goldberg, David (1957), "Family Role Structure and Fertility," (Department of Sociology). *DISS* *1955*

Goldberg, David (1959), "The Fertility of Two-Generation Urbanites," *Population Studies* 12:214-222. *1952-58*

Goldberg, David (1960), "Some Recent Developments in American Fertility Research," in *Demographic and Economic Change in Developed Countries*, a report of the National Bureau of Economic Research, Princeton University Press, pp. 137-154. *1954*

Goldberg, David (1962), "Research Issues in Public Health," unpublished MS. *1962*

Goldberg, David (1964), "Fertility and Fertility Differentials: Some Observations on Recent Changes in the U.S.," paper presented at a symposium on Research Issues in Public Health and Population Change, University of Pittsburgh Graduate School of Public Health. *1962*

Goldberg, David and Clyde H. Coombs (1963), "Some Applications of Unfolding Theory to Fertility Analysis," in *Emerging Techniques in Population Research* (Milbank Memorial Fund). *1962*

BIBLIOGRAPHY BY AUTHOR

Goldberg, David and Harry Sharp (1958), "Some Characteristics of Detroit Area Jewish and Non-Jewish Adults," in Marshall Sklare (ed.), *The Jews: Social Patterns of an American Group* (Glencoe, IL: The Free Press). *1952, 1954, 1955*

Goldberg, David, Harry Sharp and Ronald Freedman (1959), "The Stability and Reliability of Expected Family Size Data," *Milbank Memorial Fund Quarterly* 37:369-385. *1955, 1958*

Goldberg, David, Baron Moots, Aida Jain, Herbert Smith, Allen Beck, Kathy London and Nancy Grassmick (1980), "Fertility Values and Behavior: Mexican Populations," report to the Senate Select Commission on Immigration and Refugee Policy. *1978, 1980*

Goldberg, David. See also Freedman, R., et al. (1955), (1963); Smith, H., et al. (1981).

Goldberg, Irwin (1960), "Democracy in Detroit." (Department of Sociology). *DISS* *1952, 1954, 1958*

Goodwin, Leonard (1977) "Race, Sex, and Perceptions of Experiences in School as Determinants of Educational Expectations: A Panel Analysis." (Department of Sociology, Columbia University). *DISS* *1963, 1968*

Grassmick, Nancy (Gebler). See Goldberg, D., et al. (1980).

Groves, Robert M. (1974), "Intra-organizational Occupational Mobility: The Influence of Vacancies, Structure, Environment, and Labor Force Attributes on Internal Manpower Flows," paper presented at the American Sociological Association meetings. *1972*

Groves, Robert M. (1975), "Intra-Employer Status Mobility: The Role of the Firm in Wage and Occupational Achievement." (Department of Sociology). *DISS* *1972*

Groves, Robert M. (1976), "Wage and Occupational Mobility Within Firms." paper presented at the American Sociological Association annual meeting. *1972*

Hamilton, V.L. (1981), "Toward a Universal Model of Judging Wrongdoing: Japanese and American Data," Colloquium, University of Pennsylvania Psychology Department. *1977*

Hamilton, V.L. (1984), "Responsibility and Punishment in Japan and the U.S.," paper presented at Third International Conference on Justice and Law, Nags Head, NC. *1977*

Hamilton, V.L. and J. Sanders (1981), "Effects of Roles and Deeds on Responsibility Judgments: The Normative Structure of Wrongdoing," *Social Psychology Quarterly* 44:237-254. *1977*

Hamilton, V.L. and J. Sanders (Forthcoming), *See No Evil: Wrongdoing and the Individual in Japan and the U.S.* (working title). Under contract to Yale University Press. *BOOK* *1977*

BIBLIOGRAPHY BY AUTHOR

Hamilton, V.L., and J. Sanders, (with Y. Hosoi, Z. Ishimura, N. Matsubara, H. Nishimura, N. Tomita, and K. Tokoro) (1983), "Universals in Judging Wrongdoing: Japanese and Americans Compared," *American Sociological Review* 48:199-211. *1977*

Hamilton, V.L., and J. Sanders, (with Y. Hosoi, Z. Ishimura, N. Matsubara, H. Nishimura, N. Tomita, and K. Tokoro) (1988), "Punishment and the Individual in the United States and Japan," *Law and Society Review* 22:301-328. *1977*

Hamilton, V.L. See also Sanders and Hamilton (1985), (1987a), (1987b); Sanders, et al. (1980).

Hampapa, P. See Kempf and Hampapa, et al. (1975).

Haney, John B. (1959), "A Study of Public Attitudes Toward Tax-Support for Educational Television Activities in the Detroit Metropolitan Area." (Department of Speech). *DISS* *1959*

Haney, John B. (1961), "Public Opinion on Tax-Supported Television," *Journal of Broadcasting* pp. 315-324. *1959*

Hasenfeld, Yeheskel (1985), "Citizens' Encounters with Welfare State Bureaucracies," *Social Service Review* 59:622-635. *1983*

Hasenfeld, Yeheskel and Jane A. Rafferty (Forthcoming), "The Determinants of Public Attitudes Towards the Welfare State," *Social Forces*. *1983*

Hasenfeld, Yeheskel and Mayer N. Zald (In press), "Client-Organization Encounters in the United States' Social Welfare Sector," in G.W. Lapidus and G.E. Swanson (eds.), *Social Welfare and the Social Services: USA/USSR* (Berkeley, CA: Institute of International Studies). *1983*

Hasenfeld, Yeheskel and Mayer N. Zald (Forthcoming), "Program and Provider Diversity: Bureaucratic Encounters in the United States," to appear in G. Lapidus and G.E. Swanson (eds.), *USA/USSR: Social Policy and Social Welfare* (Berkeley, CA: Institute of International Relations). *1983*

Hasenfeld, Yeheskel, Jane A. Rafferty and Mayer N. Zald (1987), "The Welfare State. Citizenship and Bureaucratic Encounters," *Annual Review of Sociology* 13:387-415. *1983*

Haskett, Roger. See Kessler et al. (1988).

Hatchett, Shirley and Howard Schuman (1976), "White Respondents and Race-of-Interviewer Effects," *Public Opinion Quarterly* 39:523-528. *1971*

Hatchett, Shirley (1982), "Black Racial Attitude Change in Detroit 1968-1976," (Department of Sociology). *DISS* *1968, 1971, 1976*

Hatchett, Shirley. See also Farley, et al. (1978), (1979); Schuman and Hatchett (1974a), (1974b).

BIBLIOGRAPHY BY AUTHOR

Hawkins, Darnell F. (1975), "Estimation of Nonresponse Bias," *Sociological Methods and Research* 3:461-488. *1973*

Hawkins, Darnell F. (1976), "Nonresponse in Detroit Area Study Surveys: A Ten-Year Analysis," (Department of Sociology). Also published as "Nonresponse in Detroit Area Study Surveys: A Ten-Year Analysis," *Working Papers in Methodology*, Vol. 8 (University of North Carolina at Chapel Hill: Institute for Research in Social Science). *DISS* *1956, 1958, 1959, 1965, 1968, 1969, 1970, 1971, 1973, 1974*

Hawkins, Darnell F. (1977), "The Reluctant Respondent: Two Views," discussion paper, University of North Carolina. Chapel Hill: Institute for Research in Social Science. *1973-75*

Head, Kendra. See Robinson, et al. (1968).

Hefner, Robert. See Robinson and Hefner (1967). (1968).

Hermalin, Albert I. and Reynolds Farley (1973), "The Potential for Residential Integration in Cities and Suburbs: Implications for the Busing Controversy." *American Sociological Review* 38:595-610. *1971*

Hesse, Sharlene. See Brannon, et al. (1973).

Hesselbart, Susan (1973), "Patterns of White Beliefs and Attitudes Toward Negroes," (Department of Sociology). *DISS* *1969*

Hesselbart, Susan (1974), "Patterns of White Racial Beliefs and Attitudes," presented at the meetings of the American Association for Public Opinion Research. *1969*

Hesselbart, Susan (1975), "Education, Ethnic Stereotypes and Question Format." *Sociology and Social Research* (1975) 59:266-273. *1969*

Hesselbart, Susan and Howard Schuman (1976), "Racial Attitudes, Educational Level, and a Personality Measure," *Public Opinion Quarterly* 40:108-114. *1969*

Hesselbart, Susan. See also Brannon, et al. (1973).

Hikel, Gerald Kent (1971), "Political Ideology and its Correlates: A Study of the Detroit Electorate," (Department of Sociology). *DISS* *1969*

Hikel, Gerald Kent (1973), *Beyond the Poll: Political Ideology and Its Correlates* (Lexington, KY: Heath). *BOOK* *1966*

Hikel, Gerald Kent. See also Segal, D. and Hikel (1973).

Hollister, Clifton David (1966), "Bureaucratic Structure and School-Parent Communication in Eighteen Detroit Elementary Schools," (School of Social Work). *DISS* *1963*

Hollister, Clifton David. See also Litwak, et al. (1977).

BIBLIOGRAPHY BY AUTHOR

House, James S. and Robert D. Fischer (1971), "Authoritarianism, Age and Black Militancy," *Sociometry* 34:174-197. *1968*

House, James S. See also Laumann and House (1970).

Jackson, Robert Max. See Fischer, C. and Jackson (1976); Fischer, C., et al. (1977).

Jagannadham, V. See Eldersveld et al. (1968).

Jain, Aida. See Goldberg, D., et al. (1980).

Janowitz, Morris (1956), "Public Perspectives on Social Security," *Social Work* 1:94-101. *1954*

Janowitz, Morris and William Delany (1957), "The Bureaucrat and the Public: A Study of Informational Perspectives." *Administrative Science Quarterly* 2:141-162. *1954*

Janowitz, Morris and Deil Wright (1956). "The Prestige of Public Employment: 1929 and 1954," *Public Administration Review* 16:15-21. *1954*

Janowitz, Morris, Deil Wright and William Delany (1958), *Public Administration and the Public -- Perspectives Toward Government in a Metropolitan Community* (Ann Arbor: Bureau of Government, Institute of Public Administration). *BOOK* *1954*

Jitodai, Ted T. (1962), "Migration, Mobility and Social Participation." (Department of Sociology). *DISS* *1952-1955, 1957-1959*

Jitodai, Ted T. (1963), "Migration and Kinship Contacts." *Pacific Sociological Review* 6:49-55. *1955*

Jitodai, Ted T. (1964), "Migrant Status and Church Attendance," *Social Forces* 43:241-248. *1952, 1954, 1955, 1958, 1959*

Jitodai, Ted T. (1965), "Urban-Rural Background and Formal Group Membership," *Rural Sociology* 30:75-83. *1954, 1955, 1957, 1959*

Kahn, Robert L. See Weiss and Kahn (1960).

Katz, Daniel and Samuel J. Eldersveld (1961). "The Impact of Local Party Activity Upon the Electorate." *Public Opinion Quarterly* 25:1-24. *1957*

Katz, Daniel. See also Valen, H.

Kaufman, Robert L. See Cutler and Kaufman (1975).

Keane, Roberta. See Brannon, et al. (1973).

Kempf, W.F. and P. Hampapa (1977). "Conditional Inference for the Dynamic Test Model," ch. 3 in W. F. Kempf and B.H. Repp (eds), *Mathematical Models for Social Psychology* (Wiley, New York), pp. 81-100. *1971*

BIBLIOGRAPHY BY AUTHOR

Kempf, W.F., P. Hampapa and G. Mach (1975), *Conditional Maximum Likelihood Estimation for a Dynamic Test Model*. IPN-Arbeitsberichte 13. (Kiel: Institut für die Pädagogik der Naturwissenschaften an der Christian-Albrechts-Universität). *1971*

Kessler, Ronald C. and Elaine Wethington (Under review), "Some Strategies for Improving Recall of Life Events in a General Population Survey." *1985*

Kessler, Ronald C. and Elaine Wethington (1988), "The Reliability of Life Event Reports in a General Population Survey," (Unpublished MS.). *1985*

Kessler, Ronald C., Anita DeLongis, Roger Haskett, and Margalit Tal (1988), "Late Luteal Phase Dysphoric Disorder in a General Population Sample," (Unpublished MS.). *1985*

Kessler, Ronald C. See also Wethington, et al. (1987); Bolger, et al. (Forthcoming-a:b); McLeod, et al. (Forthcoming); Mattlin, et al. (Under review); Schuster et al. (1988); and Turnbull et al. (1988).

Kish, Leslie (1952), "A Two-Stage Sample of a City," *American Sociological Review* 17:761-769. *1952*

Kish, Leslie (1962), "A Measurement of Homogeneity in Areal Units," *Bulletin of the International Statistical Association* 4:201-210. *1956-1957*

Knoke, David. See Segal, D. and Knoke (1968).

Krosnick, Jon A. (Under review), "Psychosocial Predictors of Heavy Television Viewing Among Preadolescents, Early Adolescents, and Late Adolescents." *1982*

Ladinsky, Jack (1963a), "Careers of Lawyers. Law Practice and Legal Institutions," *American Sociological Review* 28:47-54. *1960*

Ladinsky, Jack (1963b), "The Impact of Social Backgrounds of Lawyers on Law Practice and the Law," *Journal of Legal Education* 16:127-144. Reprinted in V. Countryman and T. Finman (eds.), *The Lawyer in Modern Society* (Boston: Little, Brown, 1966); and J.J. Bonsignore, et al. (eds.), *Before the Law* (Boston: Houghton, Mifflin, 1974). *1960*

Ladinsky, Jack (1964), "The Social Profile of a Metropolitan Bar," *Michigan State Bar Journal* 43:13-24. *1960*

Ladinsky, Jack (1967), "Higher Education and Work Achievement Among Lawyers," *Sociological Quarterly* 8:222-232. *1960*

Ladinsky, Jack. See Wilensky and Ladinsky (1967).

Landecker, Werner S. (1960a), "Class Boundaries," *American Sociological Review* 25:868-877. *1952*

Landecker, Werner S. (1960b), "Class Crystallization and Its Urban Pattern," *Social Research* 27:308-320. *1952*

BIBLIOGRAPHY BY AUTHOR

- Landecker, Werner S. (1963), "Class Crystallization and Class Consciousness," *American Sociological Review* 28:219-229. *1952*
- Landecker, Werner S. (1970), "Status Congruence, Class Crystallization and Social Cleavage," *Sociology and Social Research* 54:343-355. *1952*
- Landecker, Werner S. (1982), "The Use of Survey Research in the Sociology of Knowledge," *Knowledge: Creation, Diffusion, Utilization* 4:73-94. *1980*
- Landis, Karl R. (1988), "Personal and Environmental Determinants of Social Support," (Department of Sociology). *DISS* *1985*
- Lanphier, Charles Michael (1963), "Political Orientation in Work-Group Cliques," (Department of Psychology). *DISS* *1961*
- Laumann, Edward O. (1969a), "Friends of Urban Men: An Assessment of Accuracy in Reporting Their Socioeconomic Attributes, Mutual Choice and Attitude Agreement," *Sociometry* 32:54-69. *1966*
- Laumann, Edward O. (1969b), "The Social Structure of Religious and Ethnoreligious Groups in a Metropolitan Community," *American Sociological Review* 34:182-197. *1966*
- Laumann, Edward O. (ed.) (1973), *Bonds of Pluralism: The Form and Substance of Urban Social Networks* (New York: Wiley Interscience). *BOOK* *1966*
- Laumann, Edward O. and James S. Burk (1979), "The Form and Substance of Urban Networks: A Commentary and Perspective," in Martha Pimenta de Mores and Jose Mario Pimenta Filho (eds.), *Urban Networks, Development of Metropolitan Areas* (Rio de Janeiro, Brazil: EDUCAM). *1966*
- Laumann, Edward O. and James S. House (1970), "Living Room Styles and Social Attributes: The Patterning of Material Artifacts in a Modern Urban Community," *Sociology and Social Research* 54:321-342. Also in E.O. Laumann, Paul Siegel, and Robert Hodge (eds.), *The Logic of Social Hierarchies* (Chicago: Markham, 1970). *1966*
- Laumann, Edward O. and Howard Schuman (1967), "Open and Closed Structures," paper read at the American Sociological Association Annual Meeting, San Francisco.
- Laumann, Edward O. and David R. Segal (1971), "Status Inconsistency and Ethnoreligious Group Membership as Determinants of Social Participation and Political Attitudes," *American Journal of Sociology* 77:36-61. *1966*
- Laumann, Edward O. and David R. Segal (1973) "A Reexamination of the Status Inconsistency Hypothesis," ch. 8 in Edward O. Laumann (ed.), *The Bonds of Pluralism* (New York: Wiley). *1966*
- Laumann, Edward O., Lois M. Verbrugge, and F.U. Pappi (1974), "A Causal Modelling Approach to the Study of a Community Elite's Influence Structure," *American Sociological Review* 39:162-174. Reprinted in E.O. Laumann and F.U. Pappi (eds.) *Networks of Collective Action* (New York: Wiley, 1976). *1966*

BIBLIOGRAPHY BY AUTHOR

Laumann, Edward O. See also Schuman and Laumann (1967); Marsden and Laumann (1978).

Lee, Jason S. (1988). "On Abstraction: A Sociological Analysis," (Department of Sociology). *DISS* *1980*

Leggett, John C. See Lenski and Leggett (1960).

Lenski, Gerhard E. (1954), "Status Crystallization: A Non-Vertical Dimension of Social Status," *American Sociological Review* 19:405-413. Reprinted in Freedman et al. *Principles of Sociology* (New York: Henry Holt, 1956). *1952*

Lenski, Gerhard E. (1956a), "Comment on William F. Kenkel's 'The Relationship of Status Consistency and Politico-Economic Attitudes,'" *American Sociological Review* 21:368-369. *1956*

Lenski, Gerhard E. (1956b), "Social Participation and Status Crystallization," *American Sociological Review* 21:458-464. *1952*

Lenski, Gerhard E. (1959), "Religion and the Modern Metropolis," *Review of Religious Research* 1:24-29. *1958*

Lenski, Gerhard E. (1960), "The Process of Urbanization and the Church," papers presented to the *Convention of the National Lutheran Educational Conference*. pp. 103-107 *1958*

Lenski, Gerhard E. (1962a), "The Church and Community Change," *The City Church* 13:5-7. *1958*

Lenski, Gerhard E. (1962b), "Religion and the Vote," special paper of the National Conference of Christians and Jews: First National Institute on Religious Freedom and Public Affairs. *1958*

Lenski, Gerhard E. (1962c), "Religion's Impact on Secular Institutions," *Review of Religious Research* 4:1-17. *1958*

Lenski, Gerhard E. (1963a), "Religion's Impact on Daily Life," *Bulletin: Gettysburg Seminary* 43:25-26. *1958*

Lenski, Gerhard E. (1963b), *The Religious Factor: A Sociological Study of Religion's Impact on Politics, Economics, and Family Life* (New York: Doubleday; Anchor Books). In German as *Religion und Realitaet* (Koln: Grote). In Spanish as *El Factor Religioso: Una Encuesta Sociologica* (Barcelona: Biblioteca Universitaria Labor). *BOOK* *1958*

Lenski, Gerhard E. (1964), "Comment on Mitchell's Paper," *Public Opinion Quarterly* 28:326-330. *1952*

Lenski, Gerhard E. (1965), "Comment on *The Religious Factor* - Looking Forward," *Review of Religious Research* 7:51-53. *1958*

Lenski, Gerhard E. (1971), "The Religious Factor in Detroit: Revisited," *American Sociological Review* 36:48-50. *1958*

BIBLIOGRAPHY BY AUTHOR

Lenski, Gerhard E. and John C. Leggett (1960), "Caste, Class and Deference in the Research Interview," *American Journal of Sociology* 65:463-467. *1958*

Levy, Mark. See Robinson and Levy (1986).

Litwak, Eugene (1974), "An Approach to Linkages in 'Grass Roots' Community Organization," in F.M. Cox, J.L. Erlich, J. Rothman and J.E. Tropman (eds.), *Strategies of Community Organization: A Book of Readings*, 2nd Edit. (Itasca, IL: F.E. Peacock Publishers). *1963*

Litwak, Eugene (1978), "Agency and Family Linkages in Providing Services," in Daniel Thurz and Joseph L. Vigilante (eds.), *Reaching People: The Structure of Neighborhood Services* (Beverly Hills, CA: Sage Publications). *1963*

Litwak, Eugene and Henry J. Meyer (1965), "Administrative Styles and Community Linkages of Public Schools: Some Theoretical Considerations," in Albert J. Reiss, Jr. (ed.), *Schools in a Changing Society* (New York: The Free Press). *1963*

Litwak, Eugene and Henry J. Meyer (1966), "A Balance Theory of Coordination Between Bureaucratic Organizations and Community Primary Group," *Administrative Science Quarterly* 11:31-58. Reprinted in Edwin J. Thomas (ed.), *Behavioral Science for Social Workers* (New York: The Free Press, 1967); in L.M. Friedman and S. Macaulay (eds.), *Law and Behavioral Sciences* (Bobbs-Merrill, 1969); and in John C. Maurer (ed.), *Readings in Organizational Theory: Open-System Approach* (Random House, 1971). *1963*

Litwak, Eugene and Henry J. Meyer (1967), "The School and the Family: Linking Organizations and External Primary Groups," in P. Lazarsfeld, W. Sewell and H. Wilensky (eds.), *The Uses of Sociology* (New York: Basic Books). *1963*

Litwak, Eugene and Henry J. Meyer (1974), *School, Family and Neighborhood: The Theory and Practice of School-Community Relations* (New York: Columbia University Press) *1963*

Litwak, Eugene, Henry J. Meyer and David Hollister (1977), "The Role of Linkage Mechanisms Between Bureaucracies and Families: Education and Health as Empirical Cases in Point," in Roland Liebert and A.W. Imershein (eds.), *Power, Paradigms, and Community Research* (London: Sage Publications). *1963*

Litwak, Eugene, Henry J. Meyer and Donald I. Warren (1968), "Occupational and Class Differences in Social Values: A Comparison Between Teachers and Social Workers," *Educational Sociology*. *1963*

Litwak, Eugene, E. Shiroi, L. Zimmerman, and J. Bernstein (1970), "Community Participation in Bureaucratic Organizations: Principles and Strategies," *Interchange* 1(4); also in R.M. Kramer and H. Specht (eds.), *Readings in Community Organization Practice*, 2nd Edit. (Englewood Cliffs, N.J.: Prentice Hall, 1975). *1963*

Loftin, Colin. See Young, Robert L. et al. (1987).

London, Kathy. See Goldberg, D., et al. (1980).

BIBLIOGRAPHY BY AUTHOR

Losh-Hesselbart. See Hesselbart.

Lynch, James E. (1954), "A Study of the Size and Composition of the Viewing Audience of an Educational Television Program in the Detroit Metropolitan Area," (Department of Speech). *DISS* *1954*

Lynch, James E. (1956), "A Study of the Size and Composition of the Viewing Audience of an Educational Television Program in the Detroit Metropolitan Area." *Speech Monographs* 23:55-60. *1954*

Mach, G. See Kempf, et al. (1975).

Manis, Melvin. See Crane, et al. (1979).

Marsden, Peter V. and Edward O. Laumann (1978), "The Social Structure of Religious Groups: A Replication and Methodological Critique," ch. 3 in Samuel Shye (ed.), *Theory Construction and Data Analysis in the Behavioral Sciences* (San Francisco: Jossey-Bass). *1966*

Martin, Elizabeth (1976), "Altruism and Rationality: A Conceptual Scheme with Implications for Social Change," paper prepared for the Social Science Research Council, Advisory and Planning Committee on Social Indicators. *1954, 1958, 1971*

Martin, Elizabeth (1980), "The Effects of Item Contiguity and Probing on Measures of Anomia," *Social Psychology Quarterly* 43:116-120. *1971*

Martin, Elizabeth (1983), "Surveys as Social Indicators: Problems in Monitoring Trends," ch. 16 in Peter H. Rossi, James D. Wright and Andy B. Anderson (eds.), *Handbook of Survey Research* (New York: Academic Press). *1958, 1971*

Martin, Elizabeth (1984), "The Role of the Respondent," ch. 8 in Charles F. Turner and Elizabeth Martin, (eds.), *Surveying Subjective Phenomena* Vol. 1 (New York: Russell Sage Foundation). *1971*

Martin, Elizabeth. See also Fischer, Elizabeth.

Martin, Steven S. See Crane, et al. (1979).

Mason, Karen Oppenheim, John L. Czajka and Sara Arber (1976), "Change in U.S. Women's Sex-Role Attitudes, 1964-1974." *American Sociological Review* 41:573-596. *1974*

Mattlin, Jay A., Elaine Wethington, and Ronald C. Kessler (Under review) "Situational Determinants of Coping and Coping Effectiveness in a General Population Sample." *1985*

Mayer, Albert J. and Harry Sharp (1962), "Religious Preference and Worldly Success," *American Sociological Review* 27:218-227. *1954-1959*

Mayhew, Leon and Albert J. Reiss, Jr. (1969), "The Social Organization of Legal Contacts," *American Sociological Review* 34:309-318. *1967*

McDowall, David. See Young, Robert L. et al. (1987).

BIBLIOGRAPHY BY AUTHOR

McLeod, Jane D. (1987). "Childhood, Parental Loss and Adult Depression: An Evaluation of Psychoanalytic, Attachment and Sociological Theories," (Department of Sociology). *DISS* *1985*

McLeod, Jane D. (1988), "The Use of Event History Methods to Analyze Life Event-Illness Onset Data," paper presented at the meetings of the American Sociological Association, Atlanta. *1985*

McLeod, Jane D. (Forthcoming), "Childhood Parental Loss and Adult Depression." *1985*

McLeod, Jane D., Joanne E. Turnbull, and Ronald C. Kessler (Forthcoming), "Evaluation of a DIS-Based Screening Instrument for Depression." *1985*

McLeod, Jane D. See also Wethington, et al. (1987); Turnbull et al. (1988).

McRae, James A., Jr. (1983), "Changes in Religious Communalism Desired by Protestants and Catholics," *Social Forces* 61:709-730. *1958, 1971*

McRae, James A., Jr. See also Duncan, Otis, D. and McRae (1979).

Meyer, Henry J. See Litwak and Meyer (1965), (1966), (1967), (1974); Litwak, et al. (1968), (1977).

Miller, Daniel R. and Guy E. Swanson (1958). *The Changing American Parent* (New York: John Wiley). Awarded the E.W. Burgess award as the best book on the family published during 1958-59. *BOOK* *1953*

Miller, Peter V. and Peter Wang (1985), "Social Class, Childrearing Patterns and Control of Television," paper presented to the International Communication Association. *1982*

Model, Suzanne (1981), "Housework by Husbands: Determinants and Implications," *Journal of Family Issues* 2:225-237. Revised version printed in J. Aldous (ed.), *Two Paychecks: Life in Dual Earner Families* (Beverly Hills: Sage Publications, 1982). *1978*

Modigliani, Andre. See Gamson and Modigliani (1966).

Moles, Oliver C. Jr. (1964) "Social Status, Socializing Agents, and School Performance among Upper Elementary School Children," paper presented at the meetings of the Society for the Psychological Study of Social Issues, Los Angeles. *1963*

Monk, Mary (1954), "Some Effects of Group Membership on Attitudes and the Perception of Others' Attitudes," (Department of Psychology). *DISS* *1953*

Monk, Mary and Theodore M. Newcomb (1956), "Perceived Consensus Within and Among Occupational Classes." *American Sociological Review* 21:71-79. *1952*

BIBLIOGRAPHY BY AUTHOR

Moore, Kristin A. (1974), "Fear of Success: The Distribution, Correlates, Reliability and Consequences for Fertility of Fear of Success Among Respondents in a Metropolitan Survey Population," paper presented at the Annual Meetings of the American Psychology Association, New Orleans. *1973*

Moore, Kristin A. (1975). "Fear of Success: The Distribution, Reliability, Antecedents and Consequences of Motive to Avoid Success Imagery Among Females in a Metropolitan Survey Population," (Department of Sociology). *DISS* *1973*

Moots, Baron. See Goldberg, D., et al. (1980).

Mott, Paul. See Sharp and Mott (1956).

Namboodiri, N. Krishnan (1962), "Social System and Human Fertility: Toward a Theoretical Framework." (Department of Sociology). *DISS* *1962*

Namboothiri, D.N. See Coombs, L., et al. (1969).

Newcomb, Theodore M. See Monk and Newcomb (1956).

Nicolas, Juan Diez (1964). "La Natalidad en una Gran Metropoli." *Revista International Sociologia*, Issue 85. *1962*

Olsen, Marvin E. (1962). "Liberal-Conservative Attitude Crystallization," *Sociological Quarterly* 3:17-26. *1958*

Olsen, Marvin E. (1965a), "Political Assimilation, Social Opportunities and Political Alienation," (Department of Sociology). Presented at the annual meeting of the American Sociological Association. 1965. *DISS* *1958*

Olsen, Marvin E. (1965b), "Alienation and Political Opinions." *Public Opinion Quarterly* 29:200-212. *1958*

Olsen, Marvin E. (1970), "Social and Political Participation of Blacks." *American Sociological Review* 35:682-697. *1957*

Orbach, Harold L. (1961), "Aging and Religion: A Study of Church Attendance in the Detroit Metropolitan Area," *Geriatrics* 16:530-540. *1952-1957*

Pappi, F.U. See Laumann, et al. (1974).

Pope, Hollowell (1963), "Economic Deprivation and Social Integration in a Group of 'Middle Class' Factory Workers," (Department of Sociology). *DISS* *1960*

Pope, Hollowell (1964), "Economic Deprivation and Social Integration in a Group of 'Middle Class' Factory Workers," *Social Problems* 11:290-300. *1960*

Poskanzer, Charles N. See Cohen, et al. (1960).

Pratt, W.F. See Coombs, L., et al. (1970).

Presser, Stanley. See Converse and Presser (1986); Schuman and Presser (1981).

BIBLIOGRAPHY BY AUTHOR

Quarm, Daisy (1981). "Random Measurement Error as a Source of Discrepancies Between the Reports of Wives and Husbands Concerning Marital Power and Task Allocation," *Journal of Marriage and the Family* 43:521-535. *1971, 1973, 1974*

Rafferty, Jane A. See Hasenfeld and Rafferty (Forthcoming); Hasenfeld, et al. (1987).

Rauma, David (1987), "The Seriousness of Criminal Events," paper presented at the Law and Society Association meeting, and Under review for publication. *1986*

Regulus, T. See Sanders, et al. (1980).

Reiss, Albert J., Jr. See Mayhew and Reiss (1969).

Robbins, Cynthia. See Crane, et al. (1979).

Robinson, John P. (1965). "A Multidimensional Investigation into Public and Academic Perceptions of Nations," (Department of Psychology). *DISS* *1964*

Robinson, John P. (1967a). *Public Information About World Affairs* (Ann Arbor: Institute for Social Research). *1964*

Robinson, John P. (1967b). "World Affairs Information and Mass Media Exposure," *Journalism Quarterly* 44:23-30. *1964*

Robinson, John P. (1971). "Mass Media Usage by the College Graduate," in Stephen Withey (ed.). *A Degree and What Else* (New York: McGraw-Hill). *1964*

Robinson, John P. (1972). "Toward Defining the Functions of Television." in Eli Rubinstein, George Comstock and John Murray (eds.), Report of the U.S. Surgeon General's Committee: *Television and Social Behavior* (Government Printing Office), pp. 568-603. *1964*

Robinson, John P. and Robert Hefner (1967). "Multidimensional Differences in Public and Academic Perceptions of Nations," *Journal of Personality and Social Psychology* 7:251-259. *1964*

Robinson, John P. and Robert Hefner (1968). "Perceptual Maps of the World," *Public Opinion Quarterly* 32:273-280. *1964*

Robinson, John P. and Mark Levy (1986). *The Main Source: Learning from Television News* (Beverly Hills, CA: Sage). *1964*

Robinson, John P. and James Swinehart (1969). "World Affairs and the TV Audience," *Journal of the American Association of University Women* 62:120-122. *1964*

Robinson, John P., Jerrold Rusk and Kendra Head (1968). *Measures of Political Attitudes* (Ann Arbor: Institute for Social Research). *1964*

Rusk, Jerrold. See Robinson, et al. (1968).

BIBLIOGRAPHY BY AUTHOR

Sanders, J. and V.L. Hamilton (1985), "Punishment in the U.S. and Japan," paper presented at Law and Society Annual Meeting, San Diego. *1977*

Sanders, J. and V.L. Hamilton (1987a), "Is There a Common Law of Responsibility? The Effects of Demographic Variables on Judgments of Wrongdoing," *Law and Human Behavior* 11:277-297. *1977*

Sanders, J. and V.L. Hamilton (1987b), "Attribution of Responsibility and Punishment in Japan and the U.S.: How Big is the Cultural Gap?" paper presented at American Sociological Association meetings, Chicago. *1977*

Sanders, J., T. Regulus, and V.L. Hamilton (1980), "Class and Consequences: Two Experiments on the Effects of Social Status on Responsibility Judgments," paper presented at Law and Society Annual Meeting, Madison, WI. *1977*

Sanders, J. See also Hamilton and Sanders (1981). (Forthcoming); Hamilton and Sanders, et al. (1983), (1988).

Schuman, Howard (1971), "The Religious Factor in Detroit: Review, Replication and Reanalysis," *American Sociological Review* 36:30-48. *1958, 1966*

Schuman, Howard (1972a), "Attitudes vs. Actions Versus Attitudes vs. Attitudes," *Public Opinion Quarterly* 36:347-354. *1969*

Schuman, Howard (1972b), "Sampling Design of the 1965-66 Detroit Area Study," Appendix B in Edward O. Laumann (ed.), *Bonds of Pluralism* (New York: Wiley). *1966*

Schuman, Howard (1972c), "Two Sources of Antiwar Sentiment in America," *American Journal of Sociology* 78:513-536. *1971*

Schuman, Howard (1974), "Old Wine in New Bottles: Some Sources of Response Error in the Use of Attitude Surveys to Study Social Change," paper prepared for the Research Seminar Group in Quantitative Social Science, University of Surrey, England. *1971*

Schuman, Howard (1976), "Personal Origins of Two Sources of Antiwar Sentiment in America," in Patricia M. Golden (ed.), *The Research Experience* (Peacock Press). *1971*

Schuman, Howard (1977), "The Detroit Area Study After 25 Years," *American Sociologist* 12:130-137. *HIST*

Schuman, Howard and Jean M. Converse (1971), "The Effects of Black and White Interviewers on Black Responses in 1968," *Public Opinion Quarterly* 35:44-68. *1968*

Schuman, Howard and Otis D. Duncan (1974), "Questions About Attitude Survey Questions," ch. 9 in Herbert L. Costner (ed.), *Sociological Methodology* (Jossey-Bass). *1956, 1968, 1971*

Schuman, Howard and Otis D. Duncan (1976), "An Experiment on Order and Wording of Attitude Questions," unpublished MS. *1971*

BIBLIOGRAPHY BY AUTHOR

Schuman, Howard and Shirley Hatchett (1974a), *Black Racial Attitudes: Trends and Complexities* (Ann Arbor: Institute for Social Research). *BOOK* *1968, 1971*

Schuman, Howard and Shirley Hatchett (1974b), "Changes in Black and White Racial Attitudes," *Psychology Today* 8:82-86. Reprinted in *Readings in Sociology: Contemporary Perspectives* (New York: Harper and Row), 1976, 1979. *1968,1971*

Schuman, Howard and Edward O. Laumann (1967), "Stratified Association in an Urban Community," paper presented at the meetings of the American Sociological Association, San Francisco. *1966*

Schuman, Howard and Stanley Presser (1981), *Questions and Answers in Attitude Surveys: Experiments on Question Form, Wording and Context* (New York: Academic Press). *1971,1976*

Schuman, Howard, Charlotte Steeh and Lawrence Bobo (1985), *Racial Attitudes in America: Trends and Interpretations* (Esp. Ch. 4). (Cambridge, MA and London: Harvard University Press). *1976*

Schuman, Howard. See also Brannon, et al. (1973); Converse and Schuman (1974); Cramer and Schuman (1975); Crane et al. (1979); Duncan, O. and Schuman (1976).(1980); Duncan, O., et al. (1973); Farley, et al. (1978), (1979); Fields and Schuman (1976); Hatchett and Schuman (1976); Hesselbart and Schuman (1976); Laumann and Schuman (1967).

Schuster, Tonya L., Ronald C. Kessler, and Robert H. Aseltine, Jr. (1988), "Positive Interactions, Negative Interactions, and Depressed Mood," (Unpublished MS.). *1985*

Scott, John C. (1964), "Attitudes of Older Persons Toward Local Government Services and Taxation," paper presented at the Society for the Psychological Study of Social Issues Symposium on Economic Security and Old Age, Los Angeles. *1959*

Searles, Ruth and Harry Sharp (1954), "Detroiters Look at Public Employment," *The Municipal Employee*. December *1954*

Segal, David R. (1975a), "Civil-Military Relations in the Mass Public," *Armed Forces and Society* 1:215-229. Also in Gwynn Harries-Jenkins and Jacques VanDoorn (eds.), *The Military and the Problem of Legitimacy* (London: Sage Publications, 1976). *1973*

Segal, David R. (1975b), "Civilian Images of the Military," paper presented at the 1975 Biennial Conference of the Inter-University Seminar on Armed Forces and Society, Loyola University, Chicago. In French as "Perceptions du Systeme Militaire par des Civils," in Lucien Mandeville (ed.), *Le Systeme Militaire des Etats-Unis* (Paris: Editions Universitaires, 1976). *1973*

Segal, David R. (1975c), "Communication About the Military: People and Media in the Flow of Information," *Communication Research* 2:68-78. *1973*

BIBLIOGRAPHY BY AUTHOR

Segal, David R. and David Knoke (1968), "Social Mobility, Status Inconsistency and Partisan Realignment in the United States," *Social Forces* 47:154-157. *1957*

Segal, David R. and Gerald Kent Hikel (1973). "The Emerging Independent," paper presented at the American Sociological Association meetings, New York. *1952-1970*

Segal, David R. and Stephen H. Wildstrom (1970). "Community Effects on Political Attitudes: Partisanship and Efficacy," *Sociological Quarterly* 11:67-86. *1957*

Segal, David R. and Mady Wechsler Segal (1976). "The Impact of Military Service on Trust in Government, International Attitudes and Social Status," in Nancy L. Goldman and David R. Segal (eds.), *The Social Psychology of Military Service* (Beverly Hills, CA: Sage Publications). *1973*

Segal, David R., Mary E.S. Senter and Mady Wechsler Segal (1978). "The Civil-Military Interface in a Metropolitan Community," *Armed Forces and Society* 4:423-448. *1973*

Segal, David R. See also Laumann and Segal, D. (1971). (1973).

Segal, Mady Wechsler. See Segal, D. and Segal, M. (1976); Segal, D., et al. (1978).

Senter, Mary E.S. (1982). "Civil-Military Relations in the Mass Public: An Analysis of Interpersonal Civil-Military Ties in Metropolitan Detroit," (Department of Sociology). *DISS* *1973*

Senter, Mary E.S. See also Segal, D., et al. (1978).

Sharp, Harry (1954), "Migration and Social Participation in the Detroit Area," (Department of Sociology). *DISS* *1952, 1954*

Sharp, Harry (1955), "Migration and Voting Behavior in a Metropolitan Community," *Public Opinion Quarterly* 19:206-209. *1952, 1954*

Sharp, Harry (1960a), "The Detroit Area Study: A Review of Some Recent Research," paper presented at the 1960 meetings of the Religious Research Association. *HIST* *1956-60*

Sharp, Harry (1960b), "Unemployment in Greater Detroit, February, 1958," in Wilbur J. Cohen, William Haber and Eva Mueller (eds.), *The Impact of Unemployment in the 1958 Recession* (Washington, D.C.: United States Government Printing Office, Appendix B, 62-65). *1958*

Sharp, Harry (1961a), "Graduate Training Through the Detroit Area Study," *American Sociological Review* 26:110-114. *HIST*

Sharp, Harry (1961b), "Race as a Factor in Metropolitan Growth: 1930-1960," paper presented at the meetings of the Population Association of America, New York.

BIBLIOGRAPHY BY AUTHOR

Sharp, Harry and Morris Axelrod (1956), "Mutual Aid Among Relatives in an Urban Population," in Freedman, et al. (eds.), *Principles of Sociology* (New York: Henry Holt). *1955*

Sharp, Harry and Allan Feldt (1959), "Some Factors in a Probability Sample Survey of a Metropolitan Community," *American Sociological Review* 24:650-661. *1956-1958*

Sharp, Harry and Paul Mott (1956), "Consumer Decisions in the Metropolitan Family," *The Journal of Marketing* 21:149-156. *1955*

Sharp, Harry. See also Cannell and Sharp (1958); Cohen, et al. (1960); Fauman and Sharp (1958); Freedman, R. and Sharp (1954); Freedman, R., et al. (1955); Goldberg and Sharp (1958); Goldberg, et al. (1959); Mayer and Sharp (1962); Searles and Sharp (1954).

Shiroi, E. See Litwak, et al. (1970).

Silberman, Matthew (1980), "Law as Process: The Mobilization of Legal Resources by Claimants," report to the Law and Social Sciences Program, National Science Foundation. *1967*

Silberman, Matthew (1985). *The Civil Justice Process: A Sequential Model of the Mobilization of Law* (New York: Academic Press). *BOOK* *1967*

Slater, Carol. See Gold and Slater (1958).

Slesinger, Doris. See Freedman, R., et al. (1963).

Sloane, Douglas M. See Duncan, O., et al. (1982).

Smith, Herbert. Sergio Vargas, Allen Beck and David Goldberg (1981), "The 93-cent Husband: Income Returns Among Mexican-Americans in Detroit," in Proceedings of the American Statistics Association, Social Statistics Section. *1978, 1980*

Smith, Herbert. See also Goldberg, D., et al. (1980).

Smith, Ralph Virgil (1964), "Areal Variation in Formal Association Membership in a Large Metropolitan Community," (Department of Sociology). *DISS* *1951, 1953, 1954, 1956, 1958*

Spence, Janet T. See Duncan, Otis D. et al. (1979).

Spiro, Shimon (1968), "Effects of Neighborhood Characteristics on Participation in Voluntary Associations," (School of Social Work). *DISS* *1962, 1963*

Steeh, Charlotte. See Schuman, et al. (1985).

Steiber, Steven R. (1978), "Civil and Sacred Reassessment in the Sixties," unpublished MS. *1958, 1971*

Stephens, Susan Annett (1977), "Defining Neighborhood Space: The Urban Resident's Point of View," (Department of Sociology). *DISS* *1975*

BIBLIOGRAPHY BY AUTHOR

Studer, Marlana. and Arland Thornton (1987). "Adolescent Religiosity and Contraceptive Usage," *Journal of Marriage and the Family* 49:117-128. *1962*

Studer, Marlana. See also Thornton, et al. (1986).

Swanson, Guy E. (1971). "Life with God: Some Varieties of Religious Experience in a Modern City," *Journal for the Scientific Study of Religion* 10:169-199. *1953*

Swanson, Guy E. See also Miller, D. and Swanson (1958).

Swinehart, James. See Robinson and Swinehart (1969).

Tal, Margalit. See Kessler et al. (1988).

Thornton, Arland (1985). "Changing Attitudes Toward Separation and Divorce: Causes and Consequences," *American Journal of Sociology* 90:856-872. *1962*

Thornton, Arland (Forthcoming). "Cohabitation and Marriage in the 1980s." *Demography*. *1962*

Thornton, Arland and Donald Camburn (1987). "The Influence of the Family on Premarital Sexual Attitudes and Behavior," *Demography* 24:323-340. *1962*

Thornton, Arland and Donald Camburn (1988). "Religious Commitment and Adolescent Sexual Behavior and Attitudes," paper presented at annual meeting of the Population Association of America. *1962*

Thornton, Arland and Deborah S. Freedman (1979a). "Changes in the Sex Role Attitudes of Women, 1962-1977: Evidence From a Panel Study," *American Sociological Review* 44:831-842. Also appearing as University of Michigan Population Studies Center Reprint 173. *1962*

Thornton, Arland. and Deborah S. Freedman (1979b). "Consistency of Sex Role Attitudes of Women, 1962-1977," Working Paper Series, Institute for Social Research, University of Michigan. *1962*

Thornton, Arland and Deborah S. Freedman (1982). "Changing Attitudes Toward Marriage and Single Life," *Family Planning Perspectives* 14:297-303. Reprinted in O. Pocs and R.H. Walsh (eds.), *Marriage and Family 84/85* (Guilford, CT: Dushkin, 1984). *1962*

Thornton, Arland, Duane Alwin and Donald Camburn (1983). "Causes and Consequences of Sex-Role Attitudes and Attitude Change," *American Sociological Review* 48:211-227. *1962*

Thornton, Arland, Deborah S. Freedman and Donald Camburn (1982). "Obtaining Respondent Cooperation in Family Panel Studies," *Sociological Methods and Research* 11:33-51. Reprinted in D.H. Olson and B.C. Miller (eds.), *Family Studies Review Yearbook*, Vol. 2 (Beverly Hills, CA: Sage, 1984). *1962*

BIBLIOGRAPHY BY AUTHOR

- Thornton, Arland, Ronald Freedman and Deborah S. Freedman (1984), "Further Reflections on Changes in Fertility Expectations and Preferences," *Demography* 21:423-429. *1962*
- Thornton, Arland, Duane Alwin, Donald Camburn, Marlena Studer, and Maxine Weinstein (1986), *Family and Institutional Factors in Adolescent Sexuality*, Final Report to the Office of Adolescent Pregnancy Programs. *1962*
- Thornton, Arland. See also Alwin and Thornton (1984); Freedman, D. and Thornton (1979), (1982); Freedman, D., et al. (1979), (1980), (1981), (Forthcoming); Freedman, R., et al. (1980); Studer and Thornton (1987); Weinstein and Thornton (1987).
- Tomah, Aida K. (1961), "Informal Group Participation and Settlement Patterns in Metropolitan Detroit," (Department of Sociology). *DISS* *1952, 1957, 1959*
- Tomah, Aida K. (1964), "Informal Group Participation and Residential Patterns." *American Journal of Sociology* 70:28-35. *1952, 1957, 1959*
- Tomah, Aida K. (1967), "Informal Participation in a Metropolitan Community," *Sociological Quarterly* 8:85-102. *1952, 1957, 1959*
- Tomah, Aida K. (1969), "Empirical Considerations on the Problem of Social Integration," *Sociological Inquiry* 39:65-76. *1957*
- Turnbull, Joanne E., Jane D. McLeod, Jay M. Callahan, and Ronald C. Kessler (1988), "Who Should Ask? Ethical Interviewing in Psychiatric Epidemiology Studies." *American Journal of Orthopsychiatry* 58:228-239. *1985*
- Turnbull, Joanne E. See also McLeod et al. (Forthcoming).
- Valen, Henry and Daniel Katz (1964), *Political Parties in Norway: A Community Study* (London: Tavistock Publications). *1957*
- Vargas, Sergio. See Smith, H., et al. (1981).
- Varchaver, Catherine (1956), *Older People in the Detroit Area and the Retirement Age: A Study of a Cross-Section of the Over-65 Group of Citizens* (Grand Rapids, MI: William B. Eerdmans Publishing Co.). *1953*
- Verbrugge, Lois M. (1974), "Adult Friendship Contact: Time Constraints and Status-Homogeneity Effects, Detroit and Julich, West Germany," (Department of Sociology). *DISS* *1966*
- Verbrugge, Lois M. (1977), "The Structure of Adult Friendship Choices," *Social Forces* 56:576-597. *1966*
- Verbrugge, Lois M. (1979), "Multiplexity in Adult Friendships," *Social Forces* 57:1286-1309. *1966*
- Verbrugge, Lois M. (1983), "A Research Note on Adult Friendship Contact: A Dyadic Perspective," *Social Forces* 62:78-83. *1966*
- Verbrugge, Lois M. See also Laumann, et al. (1974).

BIBLIOGRAPHY BY AUTHOR

Viccaro, Thomas. See Brannon, et al. (1973).

Vorwaller, Darrel Johnson (1967), "Consequences of Social Mobility: An Analysis of the Additive Effects of Social Class Statuses of Origin and Destination," (School of Social Work). *DISS* *1963*

Wallisch, L. See Freedman, D., et al. (1981).

Wang, Peter. See Miller, P. V. (1985).

Warren, Donald I. (1964), "Modes of Conformity and the Character of Formal and Informal Organization Structure: A Comparative Study of Public Schools, 1964" (Department of Sociology). *DISS* *1963*

Warren, Donald I. (1969), "Neighborhood Structure and Riot Behavior in Detroit: Some Exploratory Findings," *Social Problems* 16:464-484. *1967*

Warren, Donald I. See also Litwak, et al. (1968).

Weinstein, Maxine and Arland Thornton (1987), "Mother-Child Relations and Adolescent Sexual Attitudes and Behavior," paper presented at the annual meeting of the Population Association of America. *1962*

Weinstein, Maxine. See also Thornton, et al. (1986).

Weiss, Robert S. and Robert L. Kahn (1960), "Definitions of Work and Occupation," *Social Problems* 8:142-151. *1956*

Weller, Neil Jack (1960), "Religion and Social Mobility in Industrial Society." (Department of Sociology). *DISS* *1952-1958*

Wethington, Elaine, Jane D. McLeod, Ronald C. Kessler (1987), "The Importance of Life Events for Explaining Sex Differences in Psychological Distress," in R.C. Barnett, L. Biener, and G.K. Baruch (eds.), *Gender and Stress* (New York: The Free Press). *1985*

Wethington, Elaine. See also Kessler and Wethington (1988); (Under review); Bolger et al. (Forthcoming-a;b); Mattlin, et al. (Under review).

Whyte, Martin K. (Forthcoming), *Dating and Mating: The Evolving Basis of Marriage in Detroit*. *BOOK* *1984*

Wildstrom, Stephen H. See Segal and Wildstrom (1970).

Wilensky, Harold L. (1960a), "Work, Careers and Social Integration," *International Social Science Journal* 12:543-560. Reprinted in UNESCO Special Issue on "Sociological Aspects of Leisure"; in Bobbs-Merrill Reprint S-315; in S.N. Eisenstadt (ed.), *Comparative Social Problems* (Free Press, 1964); in H.R. Stub, *Status Communities in Modern Society* (Dryden Press, 1972); in German in T. Luckmann (ed.), *Sociology of Occupations* (Koln: Kiepenheuer and Witsch, 1970). *1960*

BIBLIOGRAPHY BY AUTHOR

Wilensky, Harold L. (1960b), "Social Structure, Popular Culture, and Mass Behavior," *Public Opinion Quarterly* 24:497-499; *Studies in Public Communication* 3:15-22. Abridged in *Public Opinion Quarterly* 24:497-499. *1960*

Wilensky, Harold L. (1961a), "Life Cycle, Work Situation and Participation in Formal Associations," in R.W. Kleemeier (ed.), *Aging and Leisure: Research Perspectives on the Meaningful Use of Time* (New York: Oxford University Press). Also printed in the Proceedings of the Fifth Congress of the International Association of Gerontology, San Francisco, 1960; and in C. Tibbitts and W. Donahue (eds.), *Social and Psychological Aspects of Aging* (New York: Columbia University Press, 1962). *1960*

Wilensky, Harold L. (1961b), "Orderly Careers and Social Participation: The Impact of Work History on Social Integration in the Middle Mass," *American Sociological Review* 26:521-539. Reprinted in H.J. Peters (ed.), *Vocational Guidance and Career Development* (2nd Edit. 1970); abridged in B. Neugarten (ed.), *Middle Age and Aging* (University of Chicago Press, 1968); in H. Freeman and W.C. Jones, *Social Problems* (Rand McNally, 2nd Edit. 1973); and in J.N. Edwards and A. Booth, *Social Participation in Urban Society* (Schenkman Publishing Co., 1969). *1960*

Wilensky, Harold L. (1961c), "The Uneven Distribution of Leisure: The Impact of Economic Growth on 'Free Time,'" *Social Problems* 9:32-56. Bobbs-Merrill Reprint. #S-542; E.O. Smigel (ed.), *Work and Leisure* (College and University Press, 1963); in W.A. Fogel and A. Kleingartner (eds.), *Labor and Contemporary Effects* (Wadsworth Publishing Co., 1966); and abridged in Price, *Descriptive Sociology* (Macmillan, 1970). *1960*

Wilensky, Harold L. (1962), "Labor and Leisure: Intellectual Traditions," *Industrial Relations: A Journal of Economy and Society* 1,2:1-12. Reprinted in Walton-Fells (ed.), *The Business System* (Free Press, rev. edit.). *1960*

Wilensky, Harold L. (1963), "The Moonlighter: A Product of Relative Deprivation," *Industrial Relations* 3:105-124. Reprinted in J.D. Thompson et al. (eds.), *Man and the Modern Economy* (Addison-Wesley, 1970); in K. Young and R.W. Mack (eds.), *Principles of Sociology* (American Book Co., 3rd Edit., 1965); in C.D. Bryant (ed.), *Readings in Sociology* (J.B. Lippincott, 1971); *1960*

Wilensky, Harold L. (1964a), "Varieties of Work Experience," in Henry Borow (ed.), *Man in a World at Work* (New York: Houghton Mifflin). Part reprinted as "The Problem of Work Alienation," in F. Baker et al., *Industrial Organizations and Health* (London: Tavistock Publications, 1969). *1960*

Wilensky, Harold L. (1964b), "Mass Society and Mass Culture: Interdependence or Independence?" *American Sociological Review* 29:173-197. Also in Bobbs-Merrill Reprint Series in the Social Sciences #S-650; in B. Berelson and M. Janowitz (eds.), *Reader in Public Opinion and Communication* (Free Press-Macmillan, 1966); in G.D. Bell (ed.), *Organization and Human Behavior* (Holt, 1967); in E. Mizuchi (ed.), *The Substance of Sociology* (Appleton-Century-Crofts, 1967); in R. Atchley (ed.), *American Social Institutions* (Wadsworth, 1970); and in M.A. Strauss and J.I. Nelson (eds.), *Sociological Analysis* (Forthcoming). Abridgements in Portuguese in G. Cohn, *Communication and Mass Culture* (Sao Paulo: Companhia Editora Nacional, 1970); in French for *L'Esprit*, translated by J. Dumazedier; in German in D. Prokop (ed.), *Massenkommunikationsforschung*

BIBLIOGRAPHY BY AUTHOR

(Fischer Taschenbuchverlag, 1973); in English in R.P. Taub (ed.), *American Society in Tocqueville's Time and Day* (Rand McNally, 2nd Edit. 1972); in H.E. Freeman and W.C. Jones *Social Problems* (Rand McNally, 2nd Edit. 1973); and in G. Tuchman (ed.), *The Television Establishment* (Prentice-Hall, 1974). *1960*

Wilensky, Harold L. (1964c), "The Professionalization of Everyone," *American Journal of Sociology* 70:137-158. Reprinted in O. Grusky and G.A. Miller (eds.), *The Sociology of Organizations* (Free Press, 1970); in A. Blumberg and A. Niederhoffer (eds.), *Police Science* (Blaisdell, 1969); in P. Wasserman and M.L. Bundy (eds.), *Reader in Library Administration* (Microcard Editions, Forthcoming); in Bernard J. Gallagher III and Charles S. Palazzolo, *The Social World of Occupations* (Kendall Hunt, 1976); in German in T. Luckmann (ed.), *Sociology of Occupations* (Kiepenheuer and Witsch, 1970). Abridgements in R. Pavalko (ed.), *The Sociology of Occupations and Professions* (F.E. Peacock, 1970); in R.P. Lowry and R. Rankin (eds.), *Sociology* (Scribner, 1972). Chosen as "This Week's Citation Classic" in *Current Contents: Social and Behavioral Sciences* (1980) 12:18. *1960*

Wilensky, Harold L. (1964d), "High Culture and Mass Culture," *New Society* 14:8-11. *1960*

Wilensky, Harold L. (1966a), "Class, Class Consciousness, and American Workers," in William Haber (ed.), *Labor in a Changing America* (New York: Basic Books). Abridgement in M. Zeitlin (ed.), *American Society, Inc.* (Chicago: Markham, 1970); and in University of California Institute of Industrial Relations Reprint 283. *1960*

Wilensky, Harold L. (1966b), "Measures and Effects of Social Mobility," in N.J. Smelser and Seymour M. Lipset (eds.), *Social Structure, Social Mobility and Economic Development* (Chicago: Aldine Press). Reprinted in Italian by Marsilio Editori, *Stratification*, 1968; and in University of California Institute of Industrial Relations Reprint 290. *1960*

Wilensky, Harold L. (1966c), "Work as a Social Problem," in H.S. Becker (ed.), *Social Problems* (New York: Wiley). *1960*

Wilensky, Harold L. (1967), "Technology, Work and Leisure," in *Human Values and Technological Change* (Proceedings of the 17th Annual Conference, Industrial Relations Centre, McGill University). Also in French in *Journal of Industrial Relations*, Laval University, 1968. Abridgements in *Monthly Labor Review*, September, 1967; in D. Toppin, M. McLuhan, A. Porter, and J. Farina (eds.), *This Cybernetic Age* (Human Development Corp.); and in D.E. Gray (ed.), *Readings in Recreation* (Wm. C. Brown, 1972). *1960*

Wilensky, Harold L. (1970), "Emerging Leisure Styles: A Microscopic Prediction About the Fate of the Organization Man," *Society and Leisure* 4:46-58. Also in French as "Les Nouveaux Styles de la Vie: Une Prediction Microscopique sur l'Avenir de l'Homme de l'Organization," *Sociologie et Societes*, 1971; Bobbs Merrill Reprint, #S-776. *1960*

Wilensky, Harold L. (1972), "The New Leisure Class," in H.M. Hughes (ed.), *Population and the Complex Society* (Boston: Allyn and Bacon). *1960*

BIBLIOGRAPHY BY AUTHOR

Wilensky, Harold L. (1981), "Family Life Cycle, Work and the Quality of Life: Reflections on the Roots of Happiness, Despair and Indifference in Modern Society," in Bertil B. Gardell and Gunn Johansson (eds.), *Working Life: A Social Science Contribution to Work Reform* (London: Wiley). *1960*

Wilensky, Harold L. and Jack Ladinsky (1967), "From Religious Community to Occupational Group: Structural Assimilation Among Professors, Lawyers and Engineers." *American Sociological Review* 32:541-561; and abridgement in Mueller and Schuessler (eds.), *Statistical Reasoning in Sociology* (Houghton Mifflin, 2nd Edit. 1970). *1960*

Wolfe, Donald M. See Blood and Wolfe (1960), (1969).

Wright, Deil (1957), "The Prestige of the Public Service in a Metropolitan Community," (Department of Political Science). *DISS* *1954*

Wright, Deil. See also Janowitz and Wright (1956); Janowitz, et al. (1958).

Wright, Diana. See Brannon, et al. (1973).

Young, Robert L. (1985), "Perceptions of Crime, Racial Attitudes and Firearms Ownership," *Social Forces* 64:473-486. *1979*

Young, Robert L.; David McDowall and Colin Loftin (1987). "Collective Security and the Ownership of Firearms for Protection," *Criminology* 25:47-62. *1979*

Young-DeMarco, L. See Freedman, D., et al. (Forthcoming).

Zald, Mayer N. See Hasenfeld and Zald (In press). (Forthcoming): Hasenfeld et al. (1987)

Zimmerman, L. See Litwak, et al. (1970).

Zumeta, Z. See Coombs and Zumeta (1970).



BOOKS

Note: Books may be ordered directly from the publisher. Shorter monographs (less than 75 pages) are not included in this section.

Besanceney, Paul H. (Fr.) (1970), *Interfaith Marriages: Who and Why* (New Haven, CT: College and University Press). *BOOK* *1955, 1958, 1959, 1962*

Blood, Robert O., Jr. and Donald M. Wolfe (1960), *Husbands and Wives: The Dynamics of Married Living* (New York: The Free Press). *BOOK* *1955*

Blood, Robert O., Jr. (1967), *Love Match and Arranged Marriage: A Tokyo-Detroit Comparison* (New York, The Free Press) *BOOK* *1955*

Cole, Robert E. (1979), *Work, Mobility and Participation: A Comparative Study of American and Japanese Industry* (Berkeley, CA: University of California Press). *BOOK* *1970*

Converse, Jean M. and Stanley Presser (1986), *Survey Questions: Handcrafting the Standardized Questionnaire* (Beverly Hills, CA: Sage University Papers). *BOOK* *1980s*

Converse, Jean, M. and Howard Schuman (1974), *Conversations at Random: Survey Research as Interviewers See It* (Ann Arbor: Institute for Social Research). *BOOK* *1966-1969*

Duncan, Beverly and Otis D. Duncan (1978), *Sex Typing and Social Roles* (New York: Academic Press). *BOOK* *1953-59, 1971, 1976*

Duncan, Otis D., Howard Schuman and Beverly Duncan (1973), *Social Change in a Metropolitan Community* (New York: Russell Sage Foundation). *BOOK* *1971*

Eldersveld, Samuel J. (1957), *Political Affiliation in Metropolitan Detroit* (Ann Arbor: Institute of Public Administration). (With assistance of Ronald Freedman, R.W. Dodge and Sidney Belanoff.) *BOOK* *1952*

Hamilton, V.L. and J. Sanders (Forthcoming). *See No Evil: Wrongdoing and the Individual in Japan and the U.S.* (working title). Under contract to Yale University Press. *BOOK* *1977*

Hikel, Gerald Kent (1973), *Beyond the Poll: Political Ideology and Its Correlates* (Lexington, KY: Heath). *BOOK* *1966*

Janowitz, Morris, Deil Wright and William Delany (1958), *Public Administration and the Public -- Perspectives Toward Government in a Metropolitan Community* (Ann Arbor: Bureau of Government, Institute of Public Administration). *BOOK* *1954*

Laumann, Edward O. (ed.) (1973), *Bonds of Pluralism: The Form and Substance of Urban Social Networks* (New York: Wiley Interscience). *BOOK* *1966*

BOOKS

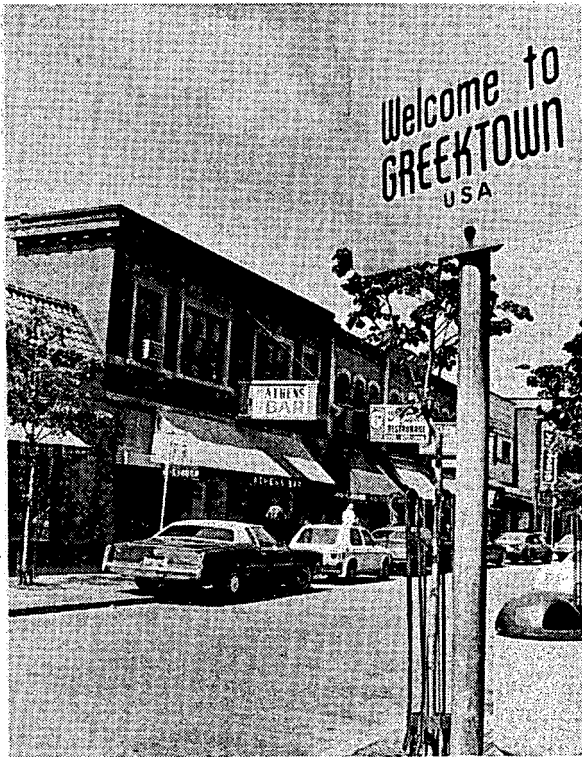
Lenski, Gerhard (1963b), *The Religious Factor: A Sociological Study of Religion's Impact on Politics, Economics, and Family Life* (New York: Doubleday; AnchorBooks). In German as *Religion und Realitaet* (Koln: Grote). In Spanish as *El Factor Religioso: Una Encuesta Sociologica* (Barcelona: Biblioteca Universitaria Labor). *BOOK* *1958*

Miller, Daniel R. and Guy E. Swanson (1958), *The Changing American Parent* (New York: John Wiley). *BOOK* *1953*

Schuman, Howard and Shirley Hatchett (1974a), *Black Racial Attitudes: Trends and Complexities* (Ann Arbor: Institute for Social Research). *BOOK* *1968, 1971*

Silberman, Matthew (1985), *The Civil Justice Process: A Sequential Model of the Mobilization of Law* (New York: Academic Press). *BOOK* *1967*

Whyte, Martin K. (Forthcoming), *Dating and Mating: The Evolving Basis of Marriage in Detroit* *Book* *1984*



DISSERTATIONS BASED ON DAS DATA

- Abowitz, Deborah A. (1985), "Consequences of Migration: Political Participation and Voluntary Group Activity in Detroit, MI, A Case Study," (Department of Sociology, Brown University). *DISS* *1975*
- Aiken, Michael Thomas (1964). "Kinship in an Urban Community," (Department of Sociology). *DISS* *1955*
- Axelrod, Morris (1953), "A Study of Formal and Informal Group Participation in a Large Urban Community," (Department of Sociology). *DISS* *1952*
- Bashsur, Rashid Lutfallah (1962), "The Influence of Ecological Factors on Values in the Detroit Area," (Department of Sociology). *DISS* *1956*
- Belanoff, Sidney (1954), "The Relationship Between Political Participation and Socio-Political Integration," (Department of Political Science). *DISS* *1952*
- Besanceney, Paul H. (Fr.) (1963), "Factors Associated with Protestant-Catholic Marriages in the Detroit Area: A Problem in Social Control," (Department of Sociology and Anthropology, Michigan State University). *DISS* *1955*
- Bloom, Jack (1958), "Child Training and Stuttering," (Department of Speech). *DISS* *1953*
- Brannon, Robert (1973), "Comparison of Expressed Attitudes and Observed Behavior, in the Area of Race Relations," (Department of Psychology). *DISS* *1969*
- Clark, Melissa A.H. (1980), "Female Labor Force Attachment During the Childbearing and Child Rearing Years," (University of Michigan). *DISS* *1962, 1963, 1966*
- Colasanto, Diane L. (1977), "The Prospects for Racial Integration in Neighborhoods: An Analysis of Residential Preferences in the Detroit Metropolitan Area," (Department of Sociology). *DISS* *1976*
- Curtis, Richard F. (1958), "Consequences of Occupational Mobility in a Metropolitan Community," (Department of Sociology). *DISS* *1956*
- Cutler, Stephen J. (1969), "Membership in Voluntary Associations and the Theory of Mass Society," (Department of Sociology). *DISS* *1966*
- David, Elizabeth Ann Jane (1960), "Public Preference and the Tax Structure: An Examination of Factors Related to State and Local Tax Preferences," (Department of Economics). *DISS* *1959*
- Delany, William (1957), "Bureaucrat and Citizen: A Study of Governmental Bureaucracies in a Metropolitan Setting," (Department of Sociology). *DISS* *1954*

DISSERTATIONS

Dodge, Richard W. (1953). "Some Aspects of the Political Behavior of Labor Union Members in the Detroit Metropolitan Area." (Department of Political Science). *DISS* *1952*

Eberts, Paul Robert (1963). "Family Life Cycle and Community Involvement." (Department of Sociology). *DISS* *1959*

English, Richard (1970). "Educational Aspirations of Black and White Youth." (Department of Sociology and School of Social Work). *DISS* *1963, 1968*

Evers, Mark (1974). "Changes in Subjective Social Class Identification in Detroit Between the 1950s and 1971." (Department of Sociology). *DISS* *1953, 1956, 1957, 1971*

Featherston, Fran Alleen (1982). "Neighbors and Communities: Political Participation in Local Arenas." (Department of Political Science.) *DISS* *1975*

Ferman, Patricia Ryan (1968). "Kinship and Fertility." (Department of Sociology). *DISS* *1962*

Fields, James M. (1971a). "Perceptions of Others' Opinions in a City and Its Neighborhoods." (Department of Sociology). *DISS* *1956, 1969*

Fischer, Elizabeth (Martin) (1974a). "Change in Anomie in Detroit from the 1950s to 1971." (Department of Sociology). *DISS* *1956, 1958, 1959, 1971*

Foot, Andrea (1973). "Occupational Mobility and the Job Change: Channels of Job Information in the Detroit Area." (Department of Sociology). *DISS* *1970*

Friedman, Albert (1963). "Traditionalism and the American Creed Under Contemporary Gemeinschaft and Gesellschaft Conditions: An Empirical Study in the Sociology of Knowledge." (Department of Sociology). *DISS* *1956*

Goldberg, David (1957). "Family Role Structure and Fertility." (Department of Sociology). *DISS* *1955*

Goldberg, Irwin (1960). "Democracy in Detroit." (Department of Sociology). *DISS* *1952, 1954, 1958*

Goodwin, Leonard (1977). "Race, Sex, and Perceptions of Experiences in School as Determinants of Educational Expectations: A Panel Analysis." (Department of Sociology, Columbia University). *DISS* *1963, 1968*

Groves, Robert M. (1975). "Intra-Employer Status Mobility: The Role of the Firm in Wage and Occupational Achievement." (Department of Sociology). *DISS* *1972*

Haney, John B. (1959). "A Study of Public Attitudes Toward Tax-Support for Educational Television Activities in the Detroit Metropolitan Area." (Department of Speech). *DISS* *1959*

Hatchett, Shirley (1982). "Black Racial Attitude Change in Detroit 1968-1976." (Department of Sociology). *DISS* *1968, 1971, 1976*

DISSERTATIONS

Hawkins, Darnell F. (1976), "Nonresponse in Detroit Area Study Surveys: A Ten-Year Analysis, (Department of Sociology). *DISS*
*1956,1958,1959,1965,1968,1969,1970, 1971,1973,1974

Hesselbart, Susan (1973), "Patterns of White Beliefs and Attitudes Toward Negroes," (Department of Sociology). *DISS* *1969*

Hikel, Gerald Kent (1971), "Political Ideology and its Correlates: A Study of the Detroit Electorate," (Department of Sociology). *DISS* *1969*

Hollister, Clifton David (1966), "Bureaucratic Structure and School-Parent Communication in Eighteen Detroit Elementary Schools," (School of Social Work). *DISS* *1963*

Jitodai, Ted T. (1962), "Migration, Mobility and Social Participation," (Department of Sociology). *DISS* *1952-1955, 1957-1959*

Landis, Karl R. (1988), "Personal and Environmental Determinants of Social Support," (Department of Sociology). *DISS* *1985*

Lanphier, Charles Michael (1963), "Political Orientation in Work-Group Cliques," (Department of Psychology). *DISS* *1961*

Lee, Jason S. (1988), "On Abstraction: A Sociological Analysis," (Department of Sociology). *DISS* *1980*

Lynch, James E. (1954), "A Study of the Size and Composition of the Viewing Audience of an Educational Television Program in the Detroit Metropolitan Area," (Department of Speech). *DISS* *1954*

McLeod, Jane D. (1987), "Childhood, Parental Loss and Adult Depression: An Evaluation of Psychoanalytic, Attachment and Sociological Theories," (Department of Sociology). *DISS* *1985*

Monk, Mary (1954), "Some Effects of Group Membership on Attitudes and the Perception of Others' Attitudes," (Department of Psychology). *DISS* *1953*

Moore, Kristin A. (1975), "Fear of Success: The Distribution, Reliability, Antecedents and Consequences of Motive to Avoid Success Imagery Among Females in a Metropolitan Survey Population," (Department of Sociology). *DISS* *1973*

Namoodiri, N. Krishnan (1962), "Social System and Human Fertility Toward a Theoretical Framework," (Department of Sociology). *DISS* *1962*

Olsen, Marvin E. (1965a), "Political Assimilation, Social Opportunities and Political Alienation," (Department of Sociology). *DISS* *1958*

Pope, Hallowell (1963), "Economic Deprivation and Social Integration in a Group of 'Middle Class' Factory Workers," (Department of Sociology) *DISS* *1960*

Robinson, John P. (1965), "A Multidimensional Investigation into Public and Academic Perceptions of Nations," (Department of Psychology). *DISS* *1964*

DISSERTATIONS

Senter, Mary E.S. (1982), "Civil-Military Relations in the Mass Public: An Analysis of Interpersonal Civil-Military Ties in Metropolitan Detroit," (Department of Sociology). *DISS* *1973*

Sharp, Harry (1954), "Migration and Social Participation in the Detroit Area," (Department of Sociology). *DISS* *1952, 1954*

Smith, Ralph Virgil (1964), "Areal Variation in Formal Association Membership in a Large Metropolitan Community," (Department of Sociology). *DISS* *1951, 1953, 1954, 1956, 1958*

Spiro, Shimon (1968), "Effects of Neighborhood Characteristics on Participation in Voluntary Associations," (School of Social Work). *DISS* *1962, 1963*

Stephens, Susan Annett (1977), "Defining Neighborhood Space: The Urban Resident's Point of View," (Department of Sociology). *DISS* *1975*

Tomeh, Aida K. (1961), "Informal Group Participation and Settlement Patterns in Metropolitan Detroit," (Department of Sociology). *DISS* *1952, 1957, 1959*

Verbrugge, Lois Marie (1974), "Adult Friendship Contact: Time Constraints and Status-Homogeneity Effects, Detroit and Julich, West Germany," (Department of Sociology). *DISS* *1966*

Vorwaller, Darrel Johnson (1967), "Consequences of Social Mobility: An Analysis of the Additive Effects of Social Class Statuses of Origin and Destination," (School of Social Work). *DISS* *1963*

Warren, Donald I. (1964), "Modes of Conformity and the Character of Formal and Informal Organization Structure: A Comparative Study of Public Schools, 1964" (Department of Sociology). *DISS* *1963*

Weller, Neil Jack (1960), "Religion and Social Mobility in Industrial Society," (Department of Sociology). *DISS* *1952-1958*

Wright, Deil (1957), "The Prestige of the Public Service in a Metropolitan Community," (Department of Political Science). *DISS* *1954*

HISTORICAL ARTICLES AND REPORTS

- (1951) "The Detroit Area Study." (Original statement of objectives) 2 pp.
- (1953) Ronald Freedman. "The Detroit Area Study: A Training and Research Laboratory in the Community," *American Journal of Sociology* 59:30-33.
- (1954a) "Publications of the Detroit Area Study," 5 pp.
- (1954b) "Major Subject Areas Covered in Previous Surveys of the DAS, 1952-1954"
- (1954c) "The Detroit Area Study: Progress Report 1951-1954."
- (1955) *The Detroit Area Study 1951-1955* (Harry Sharp) (First printed bibliography) 16 pp.
- (1956) "A Progress Report on the University of Michigan's Detroit Area Study: September 1, 1951 - December 31, 1956," 32 pp.
- (1959a) "Bibliography (of the Detroit Area Study)," 13 pp.
- (1959b) "A Progress Report on the University of Michigan's Detroit Area Study: September 1, 1951 - December 31, 1959," (A Revision of the 1956 Edition) 24 pp.
- (1960a) *The Detroit Area Study 1951-1960* (Second printed bibliography) 24 pp.
- (1960b) Harry Sharp. "The Detroit Area Study: A Review of Some Recent Research," paper presented at the meetings of the Religious Research Association.
- (1961) Harry Sharp. "Graduate Training Through the Detroit Area Study," *American Sociological Review* 26:111-114.
- (1962) "Index to Questions Asked By the Detroit Area Study, 1951-1962," (Juan Diez-Nicolas) 7 pp.
- (1963) "DAS Student Analysis Reports 1952-1963"
- (1969a) "The Detroit Area Study after Two Decades" (Howard Schuman)
- (1969b) *The Detroit Area Study 1951-1969* (Third printed edition) 32 pp.
- (1976) *Detroit Area Study 1951-1976* (Fourth printed bibliography) 44 pp.
- (1977) Howard Schuman. "The Detroit Area Study After Twenty-Five Years," *American Sociologist* 12:130-137.
- (1978) "Index to Questions Asked By the Detroit Area Study, 1951-1978," 10 pp.
- (1981) "Review of DAS Archives"

HISTORICAL ARTICLES AND REPORTS

(1983) "Summary of Respondent Characteristics and Response Rates, Detroit Area Study, 1953-1983," 6 pp.

(1988a) Memo to Shirley Clarkson, office of the Provost: "Linking DAS to the Greater Detroit Community," April 1988 (Jean M. Converse and Steven J. Rosenstone)

(1988b) "Recent DAS Practice: A Memo to Prospective Investigators," June 1988 (Jean M. Converse)

(1988c) *The Detroit Area Study 1951-1988* (Jean M. Converse and Erika Meyer) November 1988 (Fifth printed bibliography)



Part II:
ANNUAL PROJECTS

1952

"Political Behavior in a Metropolitan Community"

Faculty Participant: Samuel J. Eldersveld

"Stratification and Status Crystallization"

Faculty Participants: Werner S. Landecker and Gerhard Lenski

Director: Ronald Freedman

Teaching Fellows:

Sidney Belanoff

Richard Dodge

Kenneth Marlin

Robert S. McCargar

Gertrude Mulholland

Secretary: Mary Monk

Student Participants:

Robert J. Ailes

Albert A. Applegate

Curtis H. Barker

Thelma F. Batten

Seymour M. Baxter

Arnold H. Bernfield

Harry A. Burdick

Henry Elsner, Jr.

Irwin Goldberg

David J. Kallen

Gregor A. Leins

Wendell R. Lyons

Charles McClintock

Julian O. Morissette

Harry Sharp

William Stirton, Jr.

Yuzuru Takeshita

Omprakash Talwar

Publications and Papers Using 1952 DAS Data:

Axelrod, Morris (1953), (1954), (1956)

Belanoff, Sidney (1954)

Dodge, Richard (1953)

Eldersveld, Samuel J. (1957)

Freedman, Ronald and Morris Axelrod (1952)

Freedman, Ronald and Harry Sharp (1954)

Kish, Leslie (1952)

Landecker, Werner S. (1960a), (1960b), (1963), (1970)

Lenski, Gerhard (1954), (1956b), (1964)

Monk, Mary and Theodore M. Newcomb (1956)

Sample description

- Multi-stage area probability sample of housing units in Wayne, Oakland and Macomb Counties*
- Adults age 21 and older
- N = 737
- Response rate (737/842) = 87.5%
- Interviews were conducted January - April, 1952

Documentation

DAS #104 Not archived at ICPSR

1. Sampling Memo I: "Selection of a Sample of Dwelling Units for the Detroit Metropolitan Area," 1952 (Leslie Kish and Lysle Somers).
2. Sampling Memo II: "Report on Non-Response Rate for 1951-52 Detroit Area Study," 1952 (Robert S. McCargar and Ronald Freedman).
3. Respondent Report: "A Social Profile of Detroit: 1952," 1952.
4. Coding Memo: No copy on file.
5. "Check on Use of Split-Sample in 1952 Detroit Area Study," 1952.
6. "Percentage Distribution of Detroit Area Population by Religious Preference, Sex, and Frequency of Church Attendance," (two tables), 1952.
7. "Comparison of Election Behavior of Negroes with Total Population," 1952.
8. "Comparison of Selected Demographic Characteristics for Negro and White Respondents in the 1952 Detroit Area Study Sample," 1952.
9. "Definition of a Probability Sample," 1952.
10. "Effect of Respondent Selection Within Households on Detroit Area Study Data for 1952," 1952.
11. "Sampling Error for the Detroit Area Study, 1951-52," 1952.
12. "Some Correlates of Formal Group Membership," 1952.
13. "Some Patterns of Group Association in the Detroit Area," (nine tables), 1953.
14. "Special Tabulations of Church and Union Membership," 1953.
15. "Special Tabulations of Participation in Civil Defense Activities," 1953.
16. "Some Social and Economic Characteristics of the Detroit Area Population, 1952," March 1953, 92 pages.
17. "The Nationality Background of Detroit Area Residents," 1952 (Harry Sharp).

ANNUAL DAS PROJECTS

1953

"Child Training Patterns Among Urban Families"

Faculty Participants: Daniel R. Miller and Guy E. Swanson

"Attitudes and Perceptions of Consenses of Group Members"

Faculty Participant: Theodore M. Newcomb

Director: Ronald Freedman

Teaching Fellows:

Mary Monk

Harry Sharp

George Witt

Secretary: Jean King

Student Participants:

Issac Akita

Zoe Akselrod

Julaine Ames (Kleine)

William Barth

Jack Beresford

Katharine Betterworth

Carolyn Comings

Margaret Dennison

Henry Elsner, Jr.

Albert Friedman

David Goldberg

Marjorie Guigou

Will Hansen

Edward B. Klein

Ernest Lilienstein

Albert McQueen

John Pettibone

Sol Plafkin

Franz Samelson

James Soukup

Murray Thomson

Barbara Trask

Catherine Varchaver

Robert Weerakoon

M. Keren Whittemore

Publications and Papers Using 1953 DAS Data:

Bloom, Jack (1958)

Miller, Daniel R. and Guy E. Swanson (1958)

Monk, Mary (1954)

Swanson, Guy E. (1971)

Varchaver, Catherine (1956)

Sample description

- Multi-stage area probability sample of housing units in Wayne, Oakland and Macomb Counties.*
 - Mothers aged 21 and older having at least one child 2 weeks to 18 years of age living in the household.
 - N = 582 (mothers)
 - Response rate = ?**
 - Interviews conducted January - April, 1953
-

Documentation

DAS #802 ICPSR #7317

1. Sampling Memo: "The Interview Response Rate for 1952-53 Detroit Area Study," 1953 (Ronald Freedman and Harry Sharp).

ANNUAL DAS PROJECTS

2. Respondent Report: A Social Profile of Detroit: 1953.
 3. Coding Memo: "Coding Reliability Report for the 1952-53 Detroit Area Study," 1953.
 4. "Determination of Objective Social Class for Detroit Area Sample, 1952-53," 1953.
 5. "Family Income in the Detroit Metropolitan Area." 1953.
 6. "Report of Mail Questionnaire Used in the 1952-53 DAS," 1953.
 7. "Sampling Error for the DAS, 1952-53," 1953.
 8. "Television Ownership in the Detroit Metropolitan Area," 1953.
 9. "The Residential Distribution of Migrants in the Detroit Area - 1953," 1954.
 10. "The Mail Questionnaire as a Supplement to the Personal Interview," 1955 (Harry Sharp).
-
-

1954

"Ideal Family Size in Detroit"

Faculty Participant: Ronald Freedman

"Administrative Behavior in a Metropolitan Community"

Faculty Participant: Morris Janowitz

Director: Morris Axelrod

Teaching Fellows:

Harry Sharp

James Soukup

Secretary: Jean King

Student Participants:

Alden Anderson

Lois Carstenson

Richard F. Curtis

Basil Georgopoulos

Oscar Grusky

Anne Hubbell

Charles H. Hubbell

John Takeshita

Deil Wright

Herbert M. Jackson

Peter Kalinke

Marilyn Karlin

Paul E. Kraemer

Ilse Lubkes

James E. Lynch

Patricia M. Marion

Albert Meister

James Pifer

Malcom Roemer

Michael Reuter

Ruth Searles

Joachim Seckel

Allan Silver

Sheila Gordon Zipf

ANNUAL DAS PROJECTS

Publications and Papers Using 1954 DAS Data:

Curtis, Richard F. (1959c)
Delany, William (1957)
Eldersveld, Samuel J. (1965)
Eldersveld, Samuel J., V. Jagannadham and A.P. Barnabas (1968)
Freedman, Ronald, David Goldberg and Harry Sharp (1955)
Goldberg, David (1960)
Janowitz, Morris (1956)
Janowitz, Morris and William Delany (1957)
Janowitz, Morris and Deil Wright (1956)
Janowitz, Morris, Deil Wright and William Delany (1958)
Lynch, James E. (1954), (1956)
Searles, Ruth and Harry Sharp (1954)
Sharp, Harry (1954), (1955)
Wright, Deil (1957)

Sample description

- Multi-stage area probability sample of housing units in Wayne, Oakland and Macomb counties.*
 - Adults 21 years and older.
 - N = 764
 - Response rate = 86% (including 20 interviews in which only census data were obtained.)**
 - Interviews conducted January - April, 1954
-

Documentation

DAS #816 ICPSR #7318

1. Sampling Memo: "The Interview Response Rate for the 1953-54 DAS," 1954 (John Takeshita).
- 2. Respondent Report: *A Social Profile of Detroit: 1954.*
- 3. Coding Memo: "Coding Reliability Report for the 1953-54 DAS," 1954.
4. "Determination of Social Class for Detroit Area Sample, 1953-54," 1954. (M. Roemer)
5. "Family Income in the Detroit Metropolitan Area - 1953," 1954.
6. "How Detroiters Feel About Governmental Employment - 1954," 1954.
7. "Approximate Sampling Errors for Percentages Based on Different Sized Groups." (two tables), 1954.
8. "Television Ownership in the Detroit Metropolitan Area - 1954," 1954.

1955

"A Description of Urban Kinship Patterns"

Faculty Participant: Morris Axelrod

"The Urban Family"

Faculty Participant: Robert O. Blood, Jr.

Director: Harry Sharp

Teaching Fellows:

David Goldberg

Ruth Searles

John Takeshita

Secretary: Norma McCarus Harris

Research Associate: David Varley

Student Participants:

Michael Aiken

Ann Blalock

Robert Barnes

Albert Boswell

Richard Burlingame

Donna Buse

Russell Chappell

Remi Clignet

Eleanor Cochran

Theodore T. Curtis

Donald Dorfman

David Feuerfile

Martin Gold

Mae Guyer

Ellen Heyman

Beryl Hutchison

Toshio Kumabe

John Kunkel

Donald Nagler

Robert Richardson

Victor Schneider

Eileen Schulak

John Scott

David Sirota

Carol Slater

Charles Smith

Dietrick Snoek

Donald M. Wolfe

Howard Wolowitz

William Zeller

Publications and Papers Using 1955 DAS Data:

Aiken, Michael Thomas (1964)

Blood, Robert O., Jr. (1958), (1963), (1964), (1967)

Blood, Robert O., Jr. and Donald M. Wolfe (1960), (1969)

Curtis, Richard F. (1959b), (1960b)

Gold, Martin and Carol Slater (1958)

Goldberg, David (1957)

Goldberg, David and Harry Sharp (1958)

Jitodai, Ted T. (1963)

Sharp, Harry and Morris Axelrod (1956)

Sharp, Harry and Paul Mott (1956)

Sample description

- Multi-stage area probability sample of housing units in Wayne, Oakland and Macomb Counties^a
- Sample of wives in households in which a man and woman were living together as husband and wife; probably restricted to age 18 years and older.
- N = 731
- Response rate? Possibly 83%; but documentation is ambiguous.
- Interviews conducted 1955, months not clear.

ANNUAL DAS PROJECTS

Documentation

DAS #828 ICPSR #7319

1. Sampling Memo I: "Selection of a Sample of Dwelling Units for the DAS, 1954-55," 1955 (John Takeshita).
2. Sampling Memo II: "The Interview Response Rate for 1954-55 DAS," 1955 (John Takeshita).
3. Respondent Report: *Detroit 1955*.
4. Coding Memo I: "Coding as an Element in Research Design: A Discussion of Some Codes Used in the 1955 DAS," 1955 (Ruth Searles).
5. Coding Memo II: "Coding Reliability Report for the 1954-55 DAS," 1955.
6. "The Determination of a Social Status Score for the 1954-55 DAS Sample," 1955.
7. "The Division of Household Tasks Between Husbands and Wives in the Detroit Area - 1955," 1955.
8. "Family Income in the Detroit Metropolitan Area - 1954," 1955.
9. "Home Production in Detroit Area Families - 1955," 1955.
10. "Number of Persons per Dwelling Unit in the Detroit Area: 1950-55," 1955.
11. "Recent Trends in Television Set Ownership in Detroit," 1955 (Harry Sharp).
12. "Sampling Error for the DAS: 1954-55," 1955.
13. "Family Income in the Detroit Metropolitan Area: 1949-55," 1956.
14. "The Importance of Relatives to the Detroit Family - 1955," 1956.
15. "Leisure Time Activities of Detroit Area Wives - 1955," 1956.
16. "Working Wives in the Detroit Area - 1955," 1956.
17. "Attitudes of White Detroiters Toward Racial Integration," 1957.
18. "Consumer Decisions in Negro and White Detroit Area Families," 1957.
19. "Number of Hours Worked per Week by Detroit Area Husbands," 1957.

ANNUAL DAS PROJECTS

1956

"Orientation on Moral Issues in a Metropolis"

Faculty Participant: Robert C. Angell

"The Meaning of Work"

Faculty Participants: Robert L. Kahn and Robert S. Weiss

Director: Harry Sharp

Teaching Fellows:

Donna Buse

Paul Mott

David Sirota

Secretary: Norma McCarus Harris

Student Participants:

Jean Butman

Robert Butman

Dora Cafagna (Marcus)

Philip E. Converse

William Duffy

Julie Flynn

Barbara Foster

Yvette Gagnon

William Gamson

Ruth U. Gebhard

James Hudson

Anthony Kallet

Jack McLeod

Murray Melbin

Samuel Nicholson

Harold Organic

David Reynolds

Pauline Royal

Nelson Schafer

James Spangenberg

E. Eugene Sutter

Lawrence Schwartz

Wallace Wells

Publications and Papers Using 1956 DAS Data:

Angell, Robert C. (1962)

Bashur, Rashid Lutfallah (1962)

Cannell, Charles F. and Harry Sharp (1958)

Curtis, Richard F. (1958). (1959a)

Fauman, S. Joseph and Harry Sharp (1958)

Friedman, Albert (1963)

Lenski, Gerhard (1956a)

Weiss: Robert S. and Robert L. Kahn (1960)

Sample description

- Multi-stage area probability sample of housing units in Wayne, Oakland and Macomb Counties*
 - Adults age 21 and older
 - N = 797
 - Response rate? Documentation is ambiguous (87%, 91%, 97%?)
 - Interviewing conducted January - March, 1956
-

Documentation

DAS #837 ICPSR #7320

1. Sampling Memo: No copy on file.
2. Respondent Report: *A Social Profile of Detroit: 1956.*

ANNUAL DAS PROJECTS

3. Coding Memo: "Coding Reliability Report for the 1955-56 DAS," 1956.
 4. "Important National Problems as Seen by Detroit Area Residents," 1956.
 5. "A Comparison of the 1955-56 DAS's Data on Occupational Status to that Reported for the Detroit Standard Metropolitan Area by the 1950 United States Census, by Sex, for White Labor Force Members Only," (table), 1957.
 6. "A Comparison of Some Characteristics of Nonreaders and Readers of the Metropolitan Newspapers in Greater Detroit," 1957.
 7. "The Number of Labor Force Members in Detroit Area Families," 1957.
 8. "Residential Mobility, 1949-50, in the Ten Largest Standard Metropolitan Areas of the United States," 1957.
-
-

1957

"Party Leadership and Political Behavior"

Faculty Participants: Daniel Katz and Samuel J. Eldersveld

"Intra-Class Correlation of Attitudes in Detroit"

Faculty Participant: Leslie Kish

Director: Harry Sharp

Research Associate: David Goldberg

Teaching Fellows:

William Gamson

John C. Scott

Paul Mott

Gordon F. Sutton

Secretary: Norma McCarus Harris

Student Participants: ---

Bernard Peck

Seymour Faber

Elaine Blaustein

Theodore Ferdinand

John Bochel

Clint Fink

Walter Boland

Richard Gruenbaum

Karel J. Cibulka

Elton F. Jackson

Carol Copp

Constance Lieder

Sarah Curtis

John C. Leggett

John C. Erfurt

Phyllis Pilisuk

Charles N. Poskanzer

Herbert J. Shubick

A.W. Singham

Virginia L. Swaggerty

Aida K. Tomeh

Virginia A. VanNocker

T.R. Young

Publications and Papers Using 1957 DAS Data:

Cohen, Wilbur J., Charles N. Poskanzer and Harry Sharp (1960)
Curtis, Richard F. (1960a)
Eldersveld, Samuel J. (1960), (1964), (1966), (1982), (1983), (1986)
Katz, Daniel and Samuel J. Eldersveld (1961)
Kish, Leslie (1962)
Olsen, Marvin E. (1970)
Orbach, Harold L. (1961)
Segal, David R. and David Knoke (1968)
Segal, David R. and Stephen H. Wildstrom (1970)
Tomeh, Aida K. (1969)
Valen, Henry and Daniel Katz (1964)

Sample description

- Modified multi-stage area probability sample:
174 blocks sampled from 142 precincts of Wayne County only, stratified by dominant political party and ethnic homogeneity.
 - Adults 21 years and older
 - N = 596 weighted to 860
 - Response rate = possibly 87%, but documentation is ambiguous
 - Interviewing was conducted in 1957, months unclear
 - A companion study of precinct leaders is archived in ICPSR 7107
-

Documentation

DAS #843 ICPSR #7280

1. Sampling Memo: "The Method of Selection of a Sample of Dwelling Units for the DAS, 1956-57," 1956 (Paul Mott).
2. Respondent Report: No copy on file.
3. Coding Memo: "Coding Reliability Report for the 1956-57 DAS," 1957 (William Gamson)

ANNUAL DAS PROJECTS

1958

"Religion in the Metropolitan Community"
Faculty Participant: Gerhard Lenski

Director: Harry Sharp

Teaching Fellows:

Elizabeth L. David

John C. Leggett

Donald Halsted

Aida K. Tomeh

Secretary: Norma McCarus Harris

Student Participants:

Thomas D. Bakker

Wayne S. Kiyosaki

Martha Anne Sandoz

Nancy L. Bonte

Carolyn Lewis

J. William Smit

Aage R. Clausen

Jacquelyn J. Love

Paul E. Smith

Edward H. Cummings

Jean B. Mann

K.S. Srikantan

John L. Dennis

Alexander Matejko

David Street

Paul R. Eberts

John J. Musial

Lorraine Tiss

Allan G. Feldt

Marvin E. Olsen

Matthieu Van Hunsel

John H. Gilmore

Robert O. Richards

Margaret Vandenbosch

Bruce Hackett

Judith E. Samonte

Laurence Weiner

Constance Hill

Gary Sampson

Robert Yesner

Suzon Karon

Publications and Papers Using 1958 DAS Data:

Goldberg, David (1959)

Goldberg, David, Harry Sharp and Ronald Freedman (1959)

Goldberg, Irwin (1960)

Lenski, Gerhard, (1959), (1960), (1962a), (1962b), (1962c), (1963a), (1963b), (1965), (1971)

Lenski, Gerhard and John C. Leggett (1960)

Olsen, Marvin E. (1962), (1965a), (1965b)

Sharp, Harry (1960b)

Sharp, Harry and Allan Feldt (1959)

Smith, Ralph Virgil (1964)

Weller, Neil Jack (1960)

Sample description

- Multi-stage area probability sample of housing units in Wayne, Oakland and Macomb Counties;* Sample addresses were selected from the city directory, augmented by a segment sample for areas not covered by the directory.
- N = 656
- Response rate (656/750) = 87.4%
- Interviewing was conducted 1st quarter of 1958.
- A special sample of clergymen serving the churches attended by the 656 respondents was also drawn, N = 127; response rate also 87%.

Documentation

DAS # 849 ICPSR #7279

1. Sampling Memo I: "The Sample Design for the 1957-58 DAS." 1959.
2. Sampling Memo II: "Sample Design Plans for the 1957-58 DAS, 1959.
3. Respondent Report: No copy on file.
4. Coding Memo: "Coding Reliability Report for the 1957-58 Detroit Area Study," 1958 (Elizabeth David).

5. "Detroiters' Attitudes Toward Sunday Shopping," 1958.
6. "Family Income in Greater Detroit: 1951-57," 1958.
7. "The Characteristics of White Residents of Multiple-Family Housing in Greater Detroit," 1960.

ANNUAL DAS PROJECTS

1959

"The Vitality of Supernatural Experience"

Faculty Participant: Guy E. Swanson

"A Fiscal Research Program"

Faculty Participant: Harvey E. Brazer

Director: Harry Sharp

Teaching Fellows:

Aage R. Clausen

Harold Organic

Elizabeth L. David

John C. Scott

Secretary: Norma McCarus Harris

Student Participants:

Jo Ann Allen

Alan E. Guskin

Martin N. Pearlman

David Bernhardt

Warren C. Haggstrom

Howard Poyourow

Paul H. Besancency

John B. Haney

David E. RePass

Robert Birnbaum

Gerry Hendershot

Douglas Robbins

Kaisa Braaten

Paul Kimmel

Owen M. Rossan

Joan J. Brown

Peg Knodel

Karen D. Russell

Ronald Burton

Gordon W. Laing

Warren Soloman

Thomas Chapman

Florence Mayer

Mary C. Walsh

Philip Fellin

C. Michael Lanphier

J. Alan Winter

Richard Flacks

Barbara F. Muney

William F. Mills

Publications and Papers Using 1959 DAS Data:

Besancency, Paul H. (Fr.) (1962),(1963),(1965a;b),(1970)

Brazer, Harvey E. (1962)

David, Elizabeth Ann Jane (1960),(1967)

Eberts, Paul Robert (1963)

Haney, John B. (1959), (1961)

Jitodai, Ted T. (1962), (1964), (1965)

Mayer, Albert J. and Harry Sharp (1962)

Scott, John C. (1964)

Tomeh, Aida K. (1961), (1964), (1967)

Sample description

- Multi-stage area probability sample of housing units in Wayne, Oakland and Macomb Counties;* Sample addresses were selected from the city directory, augmented by a segment sample for areas not covered by the directory.
- Adults 21 years or older.
- N = 767
- Response rate = 86%
- Interviewing conducted spring 1959

Documentation

DAS # 855 ICPSR #7323

1. Sampling Memo: "Selection of Sample: DAS, 1958-59; A Supplement to Sample Design for 1957-58," 1959.
 2. Respondent Report: No copy on file.
 3. Coding Memo: "Coding Reliability Report for the 1958-59 Detroit Area Study," September 1959.
 4. "The Distribution of the Population of Greater Detroit: 1950-59," 1959.
 5. "Family Income in Greater Detroit: 1951-1958," 1959 (Harry Sharp).
 6. "Measures of Sampling Error," 1959.
 7. "Television Set Ownership in Greater Detroit: 1950-1959," 1959.
 8. "Some Aspects of Public Welfare Programs as Viewed by Detroit Residents," 1961.
 9. "Measures of Sampling Error," 1959.
-

1960

"Labor and Leisure in the Urban Community: A Study of Social Order and Social Change"
 Faculty Participant: Harold Wilensky

Director: Harry Sharp

Research Associate: John C. Scott

Teaching Fellows:

Michael Aiken

Philip Fellin

Secretary: Norma McCarus Harris

Student Participants:

Susan Barr

Barbara Benavie

Ralph L. Bisco

Gabrielle Bublitz

Betty Burnside

Roger Christenfeld

Charlotte Darrow

Kenneth Feldman

Bernard Finifter

Henry Finney

Dan Hadley

Bertram Halberstadt

Carolyn Holland

Jose Jiminez

Ronald L. Johnstone

Mister Kartomo

Anne Mooney

Joseph Murphy

John R. O'Connor

Margaret Parkman

Alberta Potter

Dori Schaffer

Helen E. Sherman

John J. Sherwood, Jr.

Doris P. Slesinger

Peter W. Sperlich

Joel R. Strote

June Tiefenbrun

Md. Afsar Uddin

Donald I. Warren

Ada Weintraub

Richard Whitehill

ANNUAL DAS PROJECTS

Publications and Papers Using 1960 DAS Data:

Ladinsky, Jack (1963a), (1963b), (1964), (1967)
Lanski, Gerhard (1960)
Pope, Hallowell (1963), (1964)
Sharp, Harry (1960a)
Wilensky, Harold L. (1960a), (1960b), (1961a), (1961b), (1961c), (1962), (1963), (1964a), (1964b), (1964c), (1964d), (1966a), (1966b), (1966c), (1967), (1970), (1972), (1981)
Wilensky, Harold L. and Jack Ladinsky (1967).

Sample description

- White, male members of the labor force, ever-married, aged 21-55
 - N = 678
 - Response rate?
 - Interviewing conducted 1st half of 1960
 - Another sample of professional groups was drawn, but is not archived by DAS.
-

Documentation

DAS #863 ICPSR #7399

1. Sampling Memo: No copy on file.
2. Respondent Report: No copy on file.
3. Coding Memo: "Coding Reliability Report for the 1959-60 Detroit Area Study." June, 1960.
4. "The Characteristics of White Residents of Multiple-Family Housing in Greater Detroit," 1960.
5. "Distribution of the Population of the Detroit Standard Metropolitan Statistical Area: 1940-1960," 1960 (Harry Sharp).
6. "Estimates of the Distribution of the White and Non-White Population of Greater Detroit: 1940-1960," 1960 (Harry Sharp).
7. "Family Income in Greater Detroit: 1951-1959," 1960 (Harry Sharp).
8. "Labor Force Members per Family in Greater Detroit: 1955-56 and 1960," 1960 (Harry Sharp).
9. "Number of Persons per Dwelling Unit in Greater Detroit: 1950-1959," 1960.
10. "Population Distribution in the Three Counties of the Detroit Metropolitan Community: 1940-1960," 1960 (Harry Sharp).
11. "Population Distribution in Wayne County, Michigan: 1940-1960," 1960 (Harry Sharp).
12. "Population Distribution in Macomb County, Michigan: 1940-1960," 1960 (Harry Sharp).
13. "Population Distribution in Oakland County, Michigan: 1940-1960," 1960 (Harry Sharp).
14. "Unoccupied Homes in Metropolitan Detroit, May, 1960," 1960.

1961

"Group Influences on Political Behavior"

Faculty Participants: Warren E. Miller and Donald E. Stokes

Director: Harry Sharp

Research/ Statistical Assistant: Ronald Fremlin

Teaching Fellows:

Ada W. Finifter

C. Michael Lanphier

J. William Smit

Secretary: Patricia Cousens

Student Participants:

J. Oscar Alers

George M. Bowlby

Ronald Efron

Floyd J. Fowler Jr.

L.A. Hester

Jane A. Hirsch

Margaret Hofeller

C. David Hollister

Tomoaki Iye

Jay W. Kevin

Frederick C. Klein

Eric Krystall

Stephen J. Maddock

Albert Marckwardt

Charyl Mickelson

A. Sami Mohsen

Safia Kassim Mohsen

D.V.R. Murty

Minoru Noda

Nguyen Nhan

Corrine Opiteck

Richard B. Ross

Walter E. Schafer

Betsey Smith

Tena Tarler

Roy C. Treadway

Beth Wolland

George Wieland

Publications and Papers Using 1961 DAS Data:

Finifter, Ada (1974)

Lanphier, Charles Michael (1963)

Sample description

- Special sample of Ford, General Motors, and Chrysler plants; hourly workers, members of UAW, employed in the selected work groups of the plants.
- N = 419
- Response rate?
- Interviewing conducted January - April, 1961

Documentation

DAS #870 ICPSR #7285

1. Sampling Memo I: "Political Communication to the Union Worker, A Proposed Study of Group Influences in the Formation of Political Opinion," October, 1960. (General Study Design)
2. Sampling Memo II: "Sample Selection in the 1960-61 DAS," 1961.
3. Respondent Report: No copy on file.
4. Coding Memo: No copy on file.
5. "Memo on the 1961 DAS," February, 1961.
6. "Research Goals of the 1961-62 DAS as of the Start of the Spring Semester," February, 1961.

ANNUAL DAS PROJECTS

1962

"Family Growth in Detroit"

Faculty Participants: Ronald Freedman and David Goldberg

Director: John C. Scott

Teaching Fellows:

Jay Kenvin

C. Michael Lanphier

Roy C. Treadway

Secretary: Joanne Hocking

Student Participants:

Jamila Akhtar

Santa Algeo Traugott

Patricia Backman

Barbara Bloom

Earl Brennen

Julie Butterfield

Frederick Campbell

Reuben Chapman

Anuri Chintakananda

Soloman Chu

Eleanor Cook

P.B. Desai

Juan Diez-Nicolas

Patricia R. Ferman

John Fine

Marilyn Frank

Marietta Ginocchio

Raburn Howland

George Hunter

Michael Kahan

Kyung-Dong Kim

Patricia Lafayette

Kathleen Lathers

John Magney

Hinda Manson

N. Krishnan Namboodiri

Charles Nanry

J. Gottfried Paasche

R. Krishna Pillai

Phyllis Puffer

Vithala Rao

Barbara Rubin

Habibur Siddiqui

Joyce Tabor

Susan E. Tallman

Mary E. Warshauer

Jack Wayne

Jean Wetzel

Linda White

Yvonne Wood

Publications and Papers Using 1962 DAS Data:

Alwin, Duane F. and Arland Thornton (1984)

Bumpass, Larry L. (1967)

Coombs, Lolagene (1974), (1978), (1979)

Coombs, Lolagene and Ronald Freedman (1964), (1967), (1970a), (1970b), (1970c)

Coombs, Lolagene and Z. Zumeta (1970)

Coombs, Lolagene, Ronald Freedman, and D.N. Namboothiri (1969)

Coombs, Lolagene, Ronald Freedman, Judith Friedman, and W.F. Pratt (1970)

Ferman, Patricia Ryan (1968)

Freedman, Deborah S. and Arland Thornton (1979), (1982)

Freedman, Deborah S., Arland Thornton and Donald Camburn (1979), (1980)

Freedman, Deborah S., Arland Thornton and L. Wallisch (1981)

Freedman, Deborah S., Arland Thornton, Donald Camburn, Duane Alwin, and L. Young-Demarco (Forthcoming)

Freedman, Ronald and Lolagene Coombs (1966a), (1966b)

Freedman, Ronald, Lolagene Coombs and Larry L. Bumpass (1965)

Freedman, Ronald, Lolagene Coombs and Judith Friedman (1966)

Freedman, Ronald, Deborah S. Freedman and Arland Thornton (1980)

Freedman, Ronald, David Goldberg and Doris Slesinger (1963)

ANNUAL DAS PROJECTS

Goldberg, David (1962), (1964)
Goldberg, David and Clyde H. Coombs (1963).
Namboodiri, N. Krishnan (1962)
Nicolas, Juan Diez (1964)
Studer, Marlana, and Arland Thornton (1987)
Thornton, Arland (1985), (Forthcoming)
Thornton, Arland, and Donald Camburn (1987), (1988)
Thornton, Arland and Deborah S. Freedman (1979a), (1979b), (1982)
Thornton, Arland, Ronald Freedman and Deborah S. Freedman (1984)
Thornton, Arland, Deborah S. Freedman, and Donald Camburn (1982)
Thornton, Arland, Duane F. Alwin and Donald Camburn (1983)
Thornton, Arland, Duane F. Alwin, Donald Camburn, Marlana Studer, and Maxine Weinstein (1986)
Weinstein, Maxine and Arland Thornton (1987)

Sample description

- Sample drawn from white, married women who had a 1st, 2nd, or 4th child born in July, 1961
 - N = 1113 mothers; N = 1304 apparently includes married women without children
 - Response rate? Possibly 91% but documentation is ambiguous
 - Interviewing conducted January - March, 1962
 - Six telephone reinterviews of the sample have been conducted (late 1962, 1963, 1966, 1977, 1980, and 1985) but DAS was involved in only the initial data collection of early 1962. Research using panel reinterview data is included in the 1962 listing.
-

Documentation

DAS #882 ICPSR #7401

1. Sampling Memo: No copy on file, but a brief report on response rate is filed here.
2. Respondent Report: No copy on file of the original 1962 data collection. For reports of subsequent waves of the panel ("Study of American Families") contact Arnold Thornton, ISR.
3. Coding Memo: No copy on file.

ANNUAL DAS PROJECTS

1963

"A Study of Family-School Relationships in Detroit"
Faculty Participants: Eugene Litwak and Henry J. Meyer

Director: John C. Scott

Teaching Fellows:

Juan Diez-Nicolas

Patricia R. Ferman

Secretary: Joanne Hocking

Student Participants:

Miriam Abramovitz

Dorothy Chave

Jeffrey Eiseman

Donald Goldhamer

Esther Goodman

Debra Horwitz

Fazhur Khan

Jan Kenvin

Gottfried Paasche

Edith Lindstrom

Michael Margolis

Barbara Portnoy

Molly Rugh

Robert Shecter

Vinod Sethi

J. Merrill Shanks

Mary Skaff

K.E. Southwood

Sarah Stoffer

Krishna Swaminathan

Katharine P. Warner

Saburo Yasuda

Lynwood Zinn

Publications and Papers Using 1963 DAS Data:

Hollister, Clifton David (1966)

Litwak, Eugene (1974), (1978)

Litwak, Eugene and Henry J. Meyer (1965), (1966), (1967), (1974)

Litwak, Eugene, Henry J. Meyer and David Hollister (1977)

Litwak, Eugene, Henry J. Meyer and Donald I. Warren (1968)

Litwak, Eugene, E. Shiroi, L. Zimmerman, and J. Bernstein (1970)

Moles, Oliver C. Jr. (1964)

Spiro, Shimon (1968)

Vorwaller, Darrel Johnson (1967)

Warren, Donald I. (1964)

Sampling Description

-- Sample of 18 elementary schools in Detroit

-- Mothers of school-age children in grades 5A, 6A and 6B

-- N = 1536

-- Response rate? Probably 89% but documentation is ambiguous.

-- Interviewing conducted January - April, 1963

-- Teachers in the schools also were interviewed; N = 528. Response rate? (Cooperation reported as "almost total.")

Documentation

DAS #896 ICPSR #7402

1. Sampling Memo: No copy on file.
2. Respondent Report: No copy on file.
3. Coding Memo: No copy on file.

1964

"The Measurement and Validation of International Attitudes"
 Faculty Participants: Robert Hefner and Sheldon Levy

Director: John C. Scott

Teaching Fellows:

Michael Margolis

John P. Robinson

Kenneth E. Southwood

Secretary: Evelyn S. Feinberg

Student Participants:

Karen Barnes

Marsha Bennett

Donald Black

Larry L. Bumpass

Neil Clemons

Jere Cohen

Bridget Curren

Michael Fried

Jerrold Guben

Joanne Gutmann

Sandra Hall

Jill Hamburg

Robert M. Hauser

Richard Huggard

Ruth Hyman

George Jarvis

Joan Junas

Robert Lapham

Allan Levett

Gail Lovett

Robert McCall

Fred McClusky

H. Andrew Michener

Parthasarathi Mohapatra

Lisa Nero

James L. Norr

Ronald Reosti

Ira Rosenswaike

Allan Schnaiberg

Sally Stein

Joann Vanek

Susan Wachtel

Bruce Warren

Herbert F. Weisberg

Publications and Papers Using 1964 DAS Data:

Gamson, William A. and Andre Modigliani (1966).

Robinson, John P. (1965), (1967a), (1967b), (1971), (1972)

Robinson, John P. and Robert Hefner (1967), (1968)

Robinson, John P. and Mark Levy (1986)

Johnson, John P. and James Swinehart (1969)

Johnson, John P., Jerrold Rusk, and Kendra Head (1968)

Sample description

-- Adults 21 years or older

-- N = 557

-- Response rate = probably 81% but documentation is ambiguous

Documentation

DAS #911 ICPSR #7403

1. Sampling Memo: No copy on file.
2. Respondent Report: No copy on file.
3. Coding Memo: No copy on file.

ANNUAL DAS PROJECTS

1965

"A Study of the Placement of Events in Time"

Faculty Participants: Charles F. Cannell, Peter Wolff and John C. Scott

Director: John C. Scott

Teaching Fellows:

Robert M. Hauser

H. Andrew Michener

James L. Norr

Secretary: Evelyn S. Feinberg

Student Participants:

Phyllis Bagley

Beverly Beers

Beth Bawer

Chris Bredlow

Chu-Pin Chang

Mary Chapman

Stephen J. Cutler

Samuel Friedman

Jane Hannah

Jan Harris

Yeheskel Hasenfeld

Marjory Jacobson

Anrudh Jain

Judy Johnson

Rama Krishna

Jeanie Lee

Michael Locker

Jerry Pierce

Jerrold Rusk

Hirotsuga Sakata

Susan Sheffield

Mohammad Sheikh

Julia Smith

John Spores

James Sweet

Ruthe Sweet

Judy Waldman

Robert B. Zehner

Publications and Papers

No publications or papers based on this project have been located.

Sample description

- Multi-stage area probability sample of housing units in City of Detroit and certain towns and townships near the city; addresses drawn partly from city directories and partly from area sample.
 - Head of household or wife of head, 21-64 years
 - N = 558
 - Response rate (558/670) = 83%
-

Documentation

DAS #924 ICPSR #7404

1. Sampling Memo I: "Sample Design of the 1964-65 DAS." 1965 (Eugene P. Ericksen).
2. Sampling Memo II: "Methods of Sample Selection," 1965.
3. Respondent Report: No copy on file.
4. Coding Memo: No copy on file.

1966

"Stratified Association and Values in the Urban Community"

Faculty Participant: Edward O. Laumann

Director: Howard Schuman

Research /Statistical Assistant: Jeylan Mortimer

Teaching Fellows:

Stephen J. Cutler

James L. Norr

Robert B. Zehner

Secretary: Evelyn S. Feinberg

Student Participants:

James Ajemian

Joyce Avedesian

Jim Boudouris

Jessica Cohler

Rosita Daskol

Judy Edelman

Dave Ermann

David L. Featherman

Stanley Fukawa

Randall Goon

Joyce Ketlar Herrst

Dale Helland

Ellen Ho

James S. House

Carolyn Jenne

Roy Kass

Susan Laumann

Jeylan Mortimer

Joanne Muller

Neil Paterson

Dan Perlman

Gary Shenk

James Schrag

Elaine Selo

Carla Shagass

Nancy Silverman

Miriam Sonn

Alden Speare

Sue Ann Spearing

Don Spencer

Walter Swap

G.W. Stevenson

Stanley Weiss

Publications and Papers Using 1966 DAS Data:

Baldassare, Mark (1975a), (1975b), (1977)

Baldassare, Mark and Claude S. Fischer (1975)

Clark, Melissa A. (1980)

Cutler, Stephen J. (1969), (1973),

Cutler, Stephen J. and Robert L. Kaufman (1975)

Duncan, Otis D., and David L. Featherman (1972)

Duncan, Otis D., David L. Featherman and Beverly Duncan (1972)

Fischer, Claude S., and Robert Max Jackson (1976)

Fischer, Claude S., Robert Max Jackson et al. (1977)

Hikel, Gerald Kent (1973)

Laumann, Edward O., (1969a), (1969b), (1973),

Laumann, Edward O., and James S. Burk (1979)

Laumann, Edward O., and James S. House (1970)

Laumann, Edward O., and David R. Segal (1971), (1973)

Laumann, Edward O., Lois M. Verbrugge and F.U. Pappi (1974)

Marsden, Peter V., and Edward O. Laumann (1978)

Schuman, Howard (1971), (1972b)

Schuman, Howard and Edward O. Laumann (1967)

Verbrugge, Lois M. (1974), (1977), (1979), (1983)

ANNUAL DAS PROJECTS

Sample description

- Multi-stage area probability sample of Wayne, Oakland, and Macomb Counties.*
 - White males aged 21-64 born in U.S. or Canada and living as member of primary family in household.
 - N = 985; 28 cases were double-weighted to yield weighted N of 1013
 - Response rate (1013/1271) = 79.7% (as given in documentation).
 - Interviewing conducted April - November, 1966
-

Documentation

DAS #938 ICPSR #7405

1. Sampling Memo: "Sampling Memorandum for 1965-66 DAS," 1966 (Howard Schuman).
2. Respondent Report: No copy on file.
3. Coding Memo I: "Inter-Coder Disagreement on Closed Questions," 1966 (Stephen J. Cutler).
4. Coding Memo II: "A Report on Coding of Open Questions," 1966 (James L. Norr).
5. "Social Distance as a Metric." DAS Working Paper 11, 1969 (David D. McFarland). No copy on file.
6. "A Preliminary Examination of Male, Female and Foreign Student and Professional Interviewer Differences," 1969 (James L. Norr, Robert B. Zehner and Stephen J. Cutler).
7. "A Note on Respondents' Confident Knowledge of Their Friends' Religious, Ethnic and Political Party Status." 1969 (James L. Norr).
8. "Interlocking and Radial Friendship Nets: A Formal Feature with Important Consequences," DAS Working Paper 5, 1968 (Edward O. Laumann).
9. "The Social Structure of Ethnic Groups in a Metropolitan Community: A Smallest Space Analysis," DAS Working Paper 7, 1968 (Edward O. Laumann).
10. "The Social Structure of Occupations in an Urban Community: A Smallest Space Analysis," DAS Working Paper 9, 1968 (Edward O. Laumann).
11. "The Homogeneity of Friendship Networks," DAS Working Paper 12. Sept. 1969 (Edward O. Laumann)

1967

"Citizens in Search of Justice"

Faculty Participants: Leon Mayhew and Albert J. Reiss, Jr.

Director: Howard Schuman

Teaching Fellows:

Wolfgang Grichting

James S. House

Matthew Silberman

Secretary: Evelyn S. Feinberg

Student Participants:

Arjun Adlakha

Fred Arnstein

Ernest B. Attah

Jean M. Converse

Mary Coombs

Jim Cramer

Elizabeth Fontinellis

Barry Gruenberg

Zev Harel

Mike Harrison

Martin Heilweil

Lilly Hoffman

Swee Yee Huang

James Lang

Joan Lind

Elliot Long

Mary Longenberger

John Longres

Edward Lowenstein

Roger Manela

Vernon Moore

Julie Oktay

Paula Pelletier

Caroline Pryor

Gary Rhodes

Iris Roldan

Beth Schneider

Peter Steinberger

Doss Struse

Walter Swap

Dawn Wachtel

Peg Waletzky

Dee Wernette

Marni White

Karen Wirth

Publications and Papers Using 1967 DAS Data:

Attah (n.d.)

Mayhew, Leon and Albert J. Reiss, Jr. (1969).

Silberman, Matthew. (1980), (1985)

Warren, Donald I. (1969).

Sample description

- Multi-stage probability sample of housing units in Wayne, Oakland, and Macomb Counties. Oversampling (double rate) of City of Detroit, Hamtramck, and Highland Park to increase number of blacks.
- Head or wife of the primary family living in the household
- N = 780; weighted N = 1038 (859 white, 179 black)
- Response rate (780/957) = 81.5%
- Interviewing conducted spring-summer, 1967

Documentation

DAS #953 ICPSR #7406

1. Sampling Memo: "Sampling Memorandum for DAS 953," 1967 (Howard Schuman). No copy on file.
2. Respondent Report: No copy on file.
3. Coding Memo: No copy on file.

ANNUAL DAS PROJECTS

1968

"Black Attitudes in Detroit"

Faculty Participants: Howard Schuman and Teaching Fellows

Director: Howard Schuman

Research Associate: Carolyn Jenne

Research/Statistical Assistant: Margaret Waletzky

Teaching Fellows:

James S. House (Assistant to the Director)

Jean M. Converse

James Lang

Secretary: Lois Owens

Student Participants:

David Alford

Ronald Aufrecht

Gordon Bonham

Barbara Bullock

Michael Draper

James M. Fields

Harry Finkelstein

Robert D. Fischer

Stanley Flory

Andrea Foote

Mary Frank Fox

Albert Gentle

Frank Hammer

Howard Hammerman

Russ Hamby

Harlan Himel

Howard Iams

Richard A. Kulka

Milagros Montemayor

Olivia Schiefflin (Nordberg)

Edward Pawlak

Sally Robison (Lawson)

Yut Sakdejyont

Karen Schwab

Richard Senter

Thomas Shannon

David Taramoto

Publications and Papers Using 1968 DAS Data:

English, Richard (1970)

Fields, James M. (1971b)

Goodwin, Leonard (1977)

House, James S. and Robert D. Fischer (1971)

Schuman, Howard and Jean M. Converse (1971)

Sample description

- Multi-stage area probability sample of housing units of blacks in the City of Detroit, stratified by income and sex
- Black; head or spouse of head, age 69 or less
- N = 619
- Response rate (619/747) = 82.9%
- Interviewing conducted spring-summer, 1968
- Random assignment by race of interviewer to a portion of the black sample permitted analysis of race-of-interviewer effects
- A small supplementary sample of white suburban residents (outside city limits but within Wayne, Oakland, and Macomb Counties); white heads or wives of heads age 69 or under. N = 185. This was developed to permit (mostly white) student-interviewers a choice of white or black respondents in a period of nationwide and local racial tension.

Documentation

DAS # 965 ICPSR #7324

1. Sampling Memo: "Sampling Memorandum for the 1968 DAS," 1968 (James S. House).
A separate report on response rates is included.
 2. Respondent Report: "Report to Respondents, 1968," 1969 (Jean M. Converse).
 3. Coding Memo: No copy on file.
 4. "Predicting Survey Results: White Students' Predictions of Negroes' Responses." 1968
(Jean M. Converse).
-
-

1969

"White Attitudes and Actions on Urban Problems"

Faculty Participants: Irwin Katz and Howard Schuman

Director: Howard Schuman

Research Associate: Paula Pelletier

Research and Statistical Assistant: Andrea Foote

Teaching Fellows:

Jean M. Converse

Michael Draper

James M. Fields

Elizabeth Fischer (Martin)

Robert D. Fischer

Secretary: Lois Owens

Student Participants:

Carolyn Britt

Gary Cyphers

Jose Escudero

Elizabeth Fischer

John Fox

David Gordon

Bruce Harrison

Sharlene Hesse

Susan Hesselbart

Gerald K. Hikel

Allan Johnson

Rhoda Johnson

Roberta Keane

Robert Klein

Harriet McAdoo

Jesse McClure

Lynne Morris

Frank Munger

Richard Ogmundson

Margaret Phillips

Sang O Rhee

Sarah Rickert

Timm Rinehart

Fred Rosen

Barbara Rubenstein

Mary Sadowski

Eleanor Strang

Tom Viccaro

Dianne Wright

David Weiner

ANNUAL DAS PROJECTS

Publications and Papers Using 1969 DAS Data:

Brannon, Robert (1973)
Brannon, Robert, Gary Cyphers, Sharlene Hesse, Susan Hesselbart, Roberta Keane, Howard Schuman, Thomas Viccaro and Diana Wright (1973)
Converse, Jean, M. and Howard Schuman (1974)
Fields, James M. (1971a)
Hesselbart, Susan (1973), (1974), (1975)
Hesselbart, Susan and Howard Schuman (1976)
Hikel, Gerald Kent (1971)
Schuman, Howard (1972a)

Sample description

- Multi-stage area probability sample of housing units in Wayne, Oakland, and Macomb Counties
 - Head or wife of head drawn randomly; whites only; age 69 or less
 - N = 640
 - Response rate (640/839) = 76%
 - Part of the sample was divided randomly between DAS and SRC interviewers.
 - An extra data set of 49 blacks exists but is not a sample of the black population.
-

Documentation

DAS #981 ICPSR #7407

1. Sampling Memo: "Sampling Memorandum for DAS, 1969," 1969 (James M. Fields).
2. Respondent Report: "Report to Respondents, 1969," 1970 (Laurel Vander Velde).
3. Coding Memo: No copy on file.
4. "The Spatial Distribution of the Electoral Market," 1970 (David R. Segal and Gerald Kent Hikel).

1970

"Work Histories in Detroit and Yokohama"

Faculty Participant: Robert E. Cole

Director: John C. Scott

Teaching Fellows:

Andrea Foote

Roberta Keane

Frank Munger

Richard Ogmundson

Secretary: Margaret Thompson

Research Associate: Elizabeth Fischer (Martin)

Student Participants:

John Anderson

Irene Bratton

Jacqueline Darroch

Mary Dart

Clifford English

Jonathan Entin

Mark Felson

John Ford

Susan Grad

Sarah Granger

Nancy Greenfield

Robert Hastings

Gerald K. Hikel

Tirbani Jagdeo

Harold Kohen

Ada Kwoh

Rex Leghorn

Arthur Lerner

Kenneth Levi

Karen Liss

Saleh Malik

Greg Moschetti

Petra Osinski

Jerry Pankhurst

Catherine Paradeise

John Patton

Rodolfo Rodriguez

Linda Romagnoli

Robert Shecter

William Taylor

Paul Voss

Ed Walsh

Publications and Papers Using 1970 DAS Data:

Cole, Robert (1979)

Foote, Andrea (1973)

Segal, David R. and Gerald Kent Hikel (1973).

Sample description

- Multi-stage area probability sample of housing units in Detroit, Oakland and Macomb Counties*
- Males, 16-60 years who had worked for pay 6 months or longer and who at the time of interview were in the labor force (employed or looking for work)
- N = 638
- Response rate = 69%
- Interviews were conducted spring-summer, 1970.
- In Yokohama, Japan, 583 interviews nearly parallel to those administered in Detroit were conducted in 1971. Respondents were drawn from a multi-stage probability sample of the labor force in Yokohama. Response rate was approximately 80%.

ANNUAL DAS PROJECTS

Documentation

DAS #46803 ICPSR #7408

1. Sampling Memo I: "Sampling Memorandum, 1970, SRC Sampling Section." 1970.
 2. Sampling Memo II: "Sampling Report for the 1969-70 DAS," 1971 (Roberta Keane). No copy on file.
 3. Respondent Report: No copy on file.
 4. Coding Memo: No copy on file.
-
-

1971

"Social Problems and Social Change in Detroit"
Faculty Participant: Otis Dudley Duncan

Director: Howard Schuman

Research Associate: Elizabeth Fischer (Martin)

Teaching Fellows:

Jonathan Entin

Elizabeth Fischer (Martin)

Secretary: Laurel Vander Velde

Student Participants:

Stephen Aigner

Sunny Bradford

Alan Connor

Solomon Davis

Hasan Dogan

Barry Edmonston

Mark Evers

Robert Fournier

Robert M. Groves

Robert Hampton

Shirley Hatchett

Robert Johnson

Toni Martin

Kristin A. Moore

John Pfeiffer

Daisy Quarm

Frank Munger

Linda Romagnoli

Greg Rodd

Emilie Schmeidler

Richard Senter

Robert Thaler

Carolyn Vanderslice

Brinson Williams

Eugene Won

Lyn Woods

Publications and Papers Using 1971 DAS Data:

Alwin, Duane F. (1984a), (1984b)

Cramer, M. Richard and Howard Schuman (1975)

Duncan, Beverly and Otis D. Duncan (1978)

Duncan, Beverly and Mark Evers (1975)

Duncan, Otis D. (1974), (1975a), (1975b), (1975c), (1979a), (1982), (1983), (1984)

ANNUAL DAS PROJECTS

Duncan, Otis D. and James A. McRae, Jr. (1979)
Duncan, Otis D. and Howard Schuman (1976), (1980)
Duncan, Otis D., David L. Featherman and Janet T. Spence (1979)
Duncan, Otis D., Howard Schuman and Beverly Duncan (1973)
Duncan, Otis D., Douglas M. Sloane and Charles Brody (1982)
Evers, Mark (1974)
Fields, James M. and Howard Schuman (1976)
Hatchett, Shirley and Howard Schuman (1976)
Hermalin, Albert I. and Reynolds Farley (1973)
Kempf, W.F., P. Hampapa (1977)
Kempf, W.F., P. Hampapa, and G. Mach (1975)
Martin, Elizabeth (1974a), (1974b), (1976), (1980), (1983), (1984)
McRae, James A., Jr. (1983)
Quarm, Daisy (1981)
Schuman, Howard (1972c), (1974), (1976)
Schuman, Howard and Otis D. Duncan (1974), (1976)
Schuman, Howard and Shirley Hatchett (1974a), (1974b)
Steiber, Steven R. (1978)

Sample description

- Multi-stage area probability sample of housing units in Wayne, Oakland, and Macomb Counties*
 - Adults 21 years and older
 - N = 1881 (unweighted)
 - Response rate (1881/2334) = 80.2%
 - Two forms of the schedule were randomly assigned to respondents. Random assignment of part of the sample was made by organization (SRC and DAS) and by race of interviewer (black and white).
 - This study replicated a number of items from nine DAS projects, 1953-59, 1968, 1969.
-

Documentation

DAS #46822 ICPSR #7325

1. Sampling Memo: "Sampling Report for the 1971 DAS," 1972 (Elizabeth Fischer (Martin)).
2. Respondent Report: "1971 Report to Respondents," 1972 (Frank Munger).
3. Coding Memo I: "Memorandum On Coding Q14-17, Detroit Area Study, Project 46822," August, 1971 (Evers, Romagnoli, Duncan)
4. Coding Memo II: "Coding Reliability Report for the 1970-71 DAS," 1971 (Linda Romagnoli), No copy on file.
5. Coding Memo III: "An Estimate of Closed Coding and Punching Errors in the 46822 Tape." 1971 (Howard Schuman and Elizabeth Fischer (Martin)).
6. "Indicators of Social Change from Replication Studies: A Proposal to the Russell Sage Foundation," May, 1970 (Otis Dudley Duncan).
7. "Questionnaire Manipulations in DAS 46822 (Forms A and B)," April, 1971 (Howard Schuman).
8. Report to the Russell Sage Foundation, "Toward Social Reporting: Next Steps," July 1969 (Otis Dudley Duncan)

ANNUAL DAS PROJECTS

1972

"Comparative Study on Personnel Practices in Private Firms"
Faculty Participant: Bettye Eidson

Director: Bettye Eidson

Teaching Fellows:

Robert M. Groves

Kristin A. Moore

Daisy Quarm

Secretary: Laurel Vander Velde

Student Participants:

Dick Barrett

Charles A. Bonney

Jim Carr

Joe Chamie

Judy Clodfelter

Carol Connell

Shanta Danaraj

John Farley

Michelle Foster

Ted Fuller

Walt Gruhn

David Morgan

Frank Newport

Pat Pastor

Bill Roy

Mary Scheuer (Senter)

John A. Siebs

Viola Stafford

Susan A. Stephens

Mark Tannenbaum

Rita Taylor

Arland Thornton

Jim Walker

Mary Beth Weinberger

Publications and Papers Using 1972 DAS Data:

Groves, Robert M. (1974), (1975), (1976).

Sample Description

-- A sample of business establishments listed by Dun and Bradstreet located in Detroit Standard Metropolitan Statistical Area and employing 100 or more persons; sample stratified by four size categories and eight industry categories.

-- N = 132 firms; schedules were designed for three roles in each firm (top manager, personnel director, and first-line supervisor), but not all 132 firms are represented by all three respondents.

-- Response rate (132/181) = 72.9%

Documentation

DAS #468580 ICPSR #7905

1. Sampling Memo: "Sample Design and Field Experience, DAS 1972," 1973 (Robert M. Groves).
2. Respondent Report: "1972 Report to Respondents," 1974 (Robert M. Groves).
3. Coding Memo: No copy on file.

1973

"A Study of the Civil-Military Interface"
Faculty Participant: David R. Segal

"The Application of Laboratory Methodologies in a Survey Setting"
Faculty Participants: Michael Flynn and James S. Jackson

Director: Bettye Eidson

Teaching Fellows:

Kristin A. Moore

Mary Scheuer (Senter)

John A. Siebs

Secretary: Karen Farkas

Student Participants:

Amber Chand

Fran Featherston

Mark Ferrenz

Darnell F. Hawkins

Terry Hluchyj

Jeffrey C. Leiter

Jim Lockwood

Don Lystra

Paul Metz

Melinda Montilla

Charles Morris

Pete O'Dell

Patti Paul

Mike Polen

Larry Price

Dick Roosenberg

Steve Rytina

Carl H. Sandberg

Mary Shapiro

Sandra Stukes

Bruce Taylor

Joe Woodworth

Publications and Papers Using 1973 DAS Data:

Hawkins, Darnell F. (1975)

Moore, Kristin A. (1974), (1975)

Segal, David R. (1975a), (1975b), (1975c)

Segal, David R. and Mady Wechsler Segal (1976)

Segal, David R., Mary E.S. Senter and Mady Wechsler Segal (1978)

Senter, Mary E.S. (1982)

Sample description

- Multi-stage area probability sample of housing units in Wayne, Oakland, and Macomb Counties*
- Adults 18 years or older
- N = 544
- Response rate = 71.3%
- Interviews were conducted summer 1973
- *****
- A reinterview on the topic of marriage and family was conducted in 1974 of a subsample of the 1973 households. Respondents were currently married white females aged 18-56 whose household had fallen into the main DAS sample (above).
- N = 169 families in which at least one spouse was interviewed (in 122 families both husband and wife were interviewed).
- Response rate (169/273) = 62%
- Interviewing was conducted January - August, 1974

ANNUAL DAS PROJECTS

Documentation

DAS #468581 ICPSR #7907

1. Sampling Memo: "Sampling Memorandum for the 1972-73 DAS." 1973 (John A. Siebs).
2. Respondent Report #1: "1973 Report to Respondents." 1974 (Jeffrey C. Leiter).
3. Respondent Report #2: "Report to Respondents." 1975 (Daisy Quarm and Kristin A. Moore). (Reinterview, 1974).
4. Coding Memo: No copy on file.

ANNUAL DAS PROJECTS

1974

"A Study of Women's Labor Force Participation"

Faculty Participants: Karen Oppenheim Mason and William M. Mason

Director: Elwood Beck

Teaching Fellows:

Darnell F. Hawkins

Jeffrey C. Leiter

Paul Metz

Secretary: Connie Gask

Student Participants:

Amrah Cardoso

Kim Loy Chee

Richard Cohn

Diane L. Colasanto

John Czajka

John Feather

Fran Featherston

Bruce Fireman

Chris Flynn

Jim Holstein

Karol Krotki

Jennifer Madans

Robert Mare

Sandy Mortenson

Bernie O'Reilly

Christine Sadowski

Seyoum Selassie

Khalid Siddiqui

Michael Sosin

John Talbot

Dave Thompson

Sou Pen Wei

Terry Williams

Publications and Papers Using 1974 DAS Data:

Hawkins, Darnell F. (1976).

Mason, Karen Oppenheim, John L. Czajka and Sara Arber (1976)

Sample description

- Multi-stage area probability sample of housing units in Wayne, Oakland, and Macomb Counties*
 - Females ages 18-65 currently employed and/or having worked for at least 10 hours per week for at least 2 of the last 24 months prior to the interview
 - N = 438
 - Response rate: (438/815) = 53.7%
 - Interviewing was conducted in spring-summer 1974
-

Documentation

DAS #468582 ICPSR #7901

1. Sampling Memo: "Sampling Memorandum for the 1973-74 DAS," 1974 (Darnell F. Hawkins).
2. Respondent Report: "1974 Report to Respondents," 1975 (John Feather).
3. Coding Memo: No copy on file.

ANNUAL DAS PROJECTS

1975

"Community Life and Politics"

Faculty Participants: Thomas J. Anton and Bruce Bowen

Director: Elwood Beck

Teaching Fellows:

Diane L. Colasanto

John Feather

Fran Featherston

Susan A. Stephens

Secretary: Diane Dunham

Student Participants:

Thomas Becker

Suzanne Bianchi

Roland Binker

Katharine Gaskin

Khondaker Haque

Pamela Hartmann

Carol Hauck

Jonathan Hodgdon

Alfreda Iglehart

Sandi Kinghorn

Michael Koenig

James Kunin

Nancy Levitt

Gail Lewis

Robert Liebman

Howard Lin

Leonard Lynn

Osamwonyi Osagie

Michael Roumell

Luis Sfeir-Younis

Thea Singer

Mohammad Sohail

Publications and Papers Using 1975 DAS Data:

Abrowitz, Deborah Ann (1985).(1986a:b).(1987).(1988a:b).(Under review-a:b)

Anton, Thomas J. and Bruce Bowen (1976)

Featherston, Fran Alleen (1982).

Hawkins, Darnell F. (1977)

Stephens, Susan Annett (1977)

Sample description

- Multi-stage area probability sample of housing units in Wayne, Oakland and Macomb Counties*
 - Adults 18 years or older
 - N = 664
 - Response rate (664/939) = 70.7%
-

Documentation

DAS #468583 ICPSR #7908

1. Sampling Memo: "Sampling Memorandum for the 1974-75 DAS," 1975 (Diane L. Colasanto).
2. Respondent Report: "1975 Report to Respondents," 1976 (Susan A. Stephens).
3. Coding Memo: No copy on file.

1976

"Metropolitan and Neighborhood Problems"

Faculty Participants: Reynolds Farley (Methodological Section: Howard Schuman)

Directors: Robert M. Groves and Howard Schuman

Teaching Fellows:

Suzanne Bianchi
 Diane L. Colasanto
 Shirley Hatchett

Secretary: Kathleen F. Johnson

Student Participants:

Ali Alidoost	Deborah Greene	Steven S. Martin
Wilton Barham	Rich Hogan	Jessica Musoke
Chris Booker	Christopher Innes	Toni Richards
John B. Casterline	John Katosh	Debi Schatz
Gayle Compton	Karen Ketelhut	Jon Sell
Lynn Eden	Hallie Kintner	Mike Thornton
Kimberly Evans	Celinda Lake	Susan Vrosky
Sally Fox	Laura Malakoff	Larry Wilson
Nancy Grassmick	John Woods	Bud Wurdock

Publications and Papers Using 1976 DAS Data:

Bobo, Lawrence (1981)
 Casterline, John B. (1977)
 Colasanto, Diane L. (1977)
 Duncan, Otis D. (1979b), (1979c), (1985)
 Farley, Reynolds and Diane L. Colasanto (1980)
 Farley, Reynolds, Suzanne Bianchi and Diane L. Colasanto (1979)
 Farley, Reynolds, Shirley Hatchett and Howard Schuman (1979)
 Farley, Reynolds, Howard Schuman, Suzanne Bianchi, Diane L. Colasanto and Shirley Hatchett (1978)
 Hatchett, Shirley L. (1982)
 Schuman, Howard and Stanley Presser (1981)
 Schuman, Howard, Charlotte Steeh and Lawrence Bobo (1985)

Sample description

- Sample in two parts:
- I. Multi-stage area probability sample of housing units in Wayne, Oakland and Macomb Counties
 - II. Supplemental probability sample of housing units occupied by blacks and located within the Detroit City census tracts having at least 15% black-occupied households in 1970. (The entire Detroit Standard Metropolitan Statistical Area was included in the sampling frame, rather than the usual study area up to this time.)*
- Head or co-head of the housing unit
 -- N = 1134

ANNUAL DAS PROJECTS

- Response rate (1134/1503) = 75.4%
 - Whites: (734/942) = 77.9%
 - Blacks: (400/561) = 71.13%
 - Interviewing was conducted April - August, 1976
 - Two forms of the interview schedule were randomly assigned to respondents to permit experimental comparisons by question form.
-

Documentation

DAS #468584 ICPSR #7906

1. Sampling Memo: "Sampling Report for the 1975-76 DAS" (with addendum), 1976 (Suzanne Bianchi).
 2. Respondent Report: "1976 Report to Respondents," 1976 (Diane L. Colasanto).
 3. Coding Memo: No copy on file.
 4. "An Outline for Processing DAS Data." 1976.
-
-

1977

"Assessing Responsibility and Punishment"

Faculty Participants: V. Lee Hamilton and Joseph Sanders

"Attitudes and Behavior"

Faculty Participants: Melvin Manis and Howard Schuman

"Comparison of Telephone and Personal Interview Modes"

Faculty Participant: Robert M. Groves

Director: Robert M. Groves

Teaching Fellows:

John B. Casterline

Alfreda P. Iglehart

Steven S. Martin

ANNUAL DAS PROJECTS

Secretary: Kathleen F. Johnson

Student Participants:

Anne Adams	Mary Franklin	Debora Smith
Priscilla Boroniec	Linda Kaboolian	Daniel Steinmetz
Roger Brown	Deborah Kalmuss	Linda Swanson
C. Chertos-Weller	John Kelley	Arieh Tal
Jeffrey Chin	Matthew Lynes	Malgorzata Tal
Gerald Clark	Alice J. Patterson	Mona Taylor
Marie Crane	Thomas Regulus	Robert Taylor
Joseph Donkor	Cynthia Robbins	Jerome Toler
Ismael Dovalina	Judith Seltzer	Mark Vaitkus
Bradly Feinberg	Yat Ming Siu	Robert L. Young

Publications and Papers Using 1977 DAS Data:

Crane, Marie, M. Manis, S. Martin, C. Robbins, and H. Schuman (1979)
Hamilton, V.L. (1981), (1984)
Hamilton, V.L. and J. Sanders (1981). (Forthcoming)
Hamilton, V.L. and J. Sanders, with Y Hosoi, Z. Ishimura,
N. Matsubara, H. Nishimura, N. Tomita, and K. Tokoro (1983), (1988)
Sanders, J. and V.L. Hamilton (1985), (1987a), (1987b)
Sanders, J., T. Regulus, and V.L. Hamilton (1980)

Sample description

-- Dual-frame sample: I. Multi-stage area probability sample of housing units in Wayne, Oakland and Macomb Counties. II. Random Digit Dialing sample of residential telephone numbers in same area.
-- Adults 18 years and older
-- Overall N = 689
-- Response rate (689/1019) = 67.6%
-- N = 333 for personal interview
-- Response rate (333/444) = 75%
-- N = 356 for telephone interview
-- Response rate (356/575) = 61.9%
-- Interviewing was conducted May - July, 1977

Documentation

DAS #468585 ICPSR #8189

1. Sampling Memo I: "Sampling Report for the 1977 Detroit Area Study," December, 1977 (John B. Casterline).
2. Sampling Memo II: "Addendum to 1977 Sample Report," January, 1978.
3. Respondent Report: "1977 Report to Respondents."
4. Coding Memo: No copy on file.

ANNUAL DAS PROJECTS

1978

"A Study of the Family"

Faculty Participant: David Goldberg

Director: David Goldberg

Teaching Fellows:

Melissa Clark

Nancy Grassmick (Gebler)

Debra Kalmuss

Linda Swanson

Clarence Wurdock

Secretary: Kathleen F. Johnson

Student Participants:

Georgianna Baker

Allen Beck

Robert Burkholz

James Chui

Susan De Vos

Yung-Tai Hung

Kazuko Kano

Amanda Kaufman

Barbara Kritt

William Lavelly

Jacob Ludwig

Lauralee Mastropoalo

Richard Mero

Matthew Mette

Suzanne Model

Janet Reizenstein

Herbert Smith

Ellen Van Eck

Mark Van Epps

Frank Wilson

Mona Younis

Publications and Papers Using 1978 DAS Data:

De Vos, Susan (1980)

Model, Suzanne (1981)

Sample description

- Multi-stage area probability sample of housing units in Wayne, Oakland and Macomb Counties
 - White, fecund, once-married women under 35 living with their husbands
 - N = 650
 - Response rate = 80%
 - Interviewing was conducted spring-summer 1978.
-

Documentation

DAS #468586 ICPSR #8190

1. Sampling Memo: "Rough Outline of 1978 DAS Sample Design," 1978.
2. Respondent Report: No copy on file.
3. Coding Memo: No copy on file.

1979

"A Study of Metropolitan Issues"
Faculty Participant: Colin Loftin

Director: David Goldberg

Teaching Fellows:

Allen Beck

Linda Swanson

Nancy Grassmick

Mark Vaitkus

Secretary: Kathleen F. Johnson

Student Participants:

Kirsten Alcser

Kathryn Grasso

Angel Vargas

Amy Butler

Craig King

Lynn Wallisch

Eve Clark

Michael McGee

Robert Weintraub

Nilufer Ahmed

Elaine Miller

Suleiman Yeslam

Ann Alvarez

Sara Millman

Deborah Zinn

Brian Ewart

Pyagbara Nwiedor

Publications and Papers Using 1979 DAS Data:

Young, Robert L. (1985)

Young, Robert L., David McDowall and Colin Loftin (1987)

Sample description

- Multi-stage area probability sample of households in Wayne, Oakland, and Macomb Counties
 - Eligible persons?
 - N = 644
 - Response rate?
 - Interviewing was conducted spring-summer 1979
-

Documentation

DAS #468587 ICPSR # not yet assigned

1. Sampling Memo: No copy on file.
2. Respondent Report: No copy on file.
3. Coding Memo: No copy on file.

ANNUAL DAS PROJECTS

1980

"The Sociology of Knowledge"

Faculty Participant: Werner S. Landecker

"The Quality of Life in Detroit"

Faculty Participants: Angus Campbell and Robert W. Marans

Director: David Goldberg

Teaching Fellows:

Allen Beck	Kathy London
Nancy Grassmick	Herbert Smith

Administrative Assistant: Charlotte K. Smart

Student Participants:

Jaime Benavente	David Gurk	Angela Romero
Lawrence Bobo	Zolton Hunyady	Marcene Root
Clifford L. Broman	Martha Ice	Walter Schrieber
Celeste Burke	Maria Kousis	Jackie Smith
Victor Burke	Mike Muha	Kyung Song
Chong Cho	Camille Olson	Dennis Tachiki
Dennis Fair	Jane A. Rafferty	Ting Tin-Yu
Muhammad Faour	Leslie Rau	Joan Weber
Roxanne Friedenfels	James Robinson	Karen Wilson

Publications and Papers Using 1980 DAS Data:

Goldberg, David, Baron Moots, Aida Jain, Herbert Smith, Allen Beck, Kathy London, and Nancy Grassmick (1980)
Landecker, Werner S. (1982)
Lee, Jason S., (1988)
Smith, Herbert, Sergio Vargas, Allen Beck and David Goldberg (1981)

Sample description

-- Multi-stage area probability sample of Wayne, Oakland, and Macomb Counties
-- Adults 18 years or older
-- N = 615
-- Response rate = 78.4%

Documentation

DAS #468588 ICPSR # not yet assigned

1. Sampling Memo: No copy on file.
2. Respondent Report: No copy on file.
3. Coding Memo: No copy on file.

1981

"A Study of the Family"

Faculty Participant: Walter R. Allen

Director: Nancy Grassmick (Gebler)

Teaching Fellows:

Clifford L. Broman
Kathy London
Joan Weber

Administrative Assistant: Charlotte K. Smart

Student Participants:

Pamela Anstine	Gloria Jones	Ali Nawab Safavi
Nicola Beisel	David Jordan	Nelson Pichardo
Evelyn Bogen	Lynn Kincaid	David Pietrowski
Bruce Eaken	James Martinez	Joseph Rahmeh
Marcia Hall	Arlene Mays	Deborah Robinson
Ronald Humphrey	Pamela Meil	Jonathan Stern
Yang Ho Hyun	Terrence Mierzwa	Timothy Yarger

Publications and Papers Using 1981 DAS Data:

No publications or papers using the 1981 DAS data have been located.

Sampling Description

- Multi-stage area probability sample of housing units in Wayne, Oakland and Macomb Counties
- Men only (age limits not clear)
- N = 590
- Response rate
- Interviewing was conducted spring-summer 1981
- This study includes some items that were replicated from the 1978 DAS (for which women only were the eligible respondents).

Documentation

DAS #468589 ICPSR # not yet assigned

1. Sampling Memo: No copy on file.
2. Respondent Report: "1981 Report to Respondents," 1981.
3. Coding Memo: No copy on file.

ANNUAL DAS PROJECTS

1982

"Child Rearing Values and Practices"
Faculty Participant: Duane F. Alwin

Director: Peter V. Miller

Teaching Fellows:

Lawrence Bobo
Clifford L. Broman
Joan Weber

Administrative Assistant: Charlotte K. Smart

Student Participants:

Faye Abram	Lana Harrison	Patricia Paczas
Alon Axelrod	Jann Hoge	Bethany Peterson
Timothy Bell	Anne Holm	Karen Reardon
John Boies	Sharon Jablonski	Timothy J. Reilly
Elizabeth Crompt	Paul Jarley	Akos Rona-Tas
Ted Diamond	Jon Krosnick	Jacqueline Scott
Nancy Fultz	Michiko Kurahashi	Karen Scott
Alfredo Gonzales	Mark Langberg	Carrie Seaton
Gwisoo Gwon	Jaekyung Lee	Robert Simmons
		Richard Tabler

Publications and Papers Using 1982 DAS Data:

Alwin, Duane F. (1986); (1988); (Forthcoming)

Krosnick, Jon A. (Under review)

Miller, Peter V. and Peter Wang (1985)

Sample description

- Multi-stage area probability sample of housing units in Wayne, Oakland, and Macomb Counties
 - Parent of a child 2-17 years living with his/her child. If there were two parents in the housing unit, the respondent was randomly selected from the two; if there was only one parent, that parent was the respondent.
 - N = 544
 - Response rate = approximately 76%
-

Documentation

DAS #468631 ICPSR # not yet assigned

1. Sampling Memo: "Sampling Report for the 1982 Detroit Area Study," June, 1982 (Timothy J. Reilly).
2. Respondent Report: "1982 Report to Respondents," 1982.
3. Coding Memo: No copy on file.

1983

"Attitudes and Experiences in Detroit"

Faculty Participants: Yeheskel Hasenfeld and Mayer Zald

Director: Stanley Presser

Associate Director: Jean M. Converse

Teaching Fellows:

Faye Abram

Jann Hoge

Jane A. Rafferty

Joan Weber

Administrative Assistant: Carol M. Crawford

Student Participants:

Christopher Alhambra

Lisa Cope

Linda Hicks

Nilufer Isvan

Lynette Kono

Jason Lee

Injeong Lee

Patricia Maes

Jane D. McLeod

Darlene Nichols

Afaf Omer

Edward Puro

Paula Rust

Michiko Sano

Debi Schnyder (Renner)

Ollie Seales

Claudia Toole

David R. Williams

Tien-fong Yeh

Zhirong Zhang

Publications and Papers Using 1983 DAS Data:

Hasenfeld, Yeheskel (1985)

Hasenfeld, Yeheskel and Jane A. Rafferty (Forthcoming)

Hasenfeld, Yeheskel and Mayer Zald (In press). (Forthcoming)

Hasenfeld, Yeheskel, Jane A. Rafferty and Mayer Zald (1987)

Sample description

-- Two samples:

I. Cross-section: A multi-stage area probability sample of Wayne, Oakland and Macomb Counties.

II. An oversample designed to increase the proportion of respondents who had had encounters with social welfare agencies: the sample was drawn from those tri-county block groups and enumeration districts for which 1979 median household income was less than \$10,000.

-- Adults age 18 and older in both samples

-- N = 523 for cross-section sample

-- Response rate (523/695) = 75.2%

-- N = 159 for oversample

-- Response rate (159/224) = 70.9%

Documentation

DAS #468632

1. Sampling Memo: "Sampling Report for the 1983 Detroit Area Study," December, 1983 (Jean M. Converse and Stanley Presser).
2. Respondent Report: "The Detroit Area Study 1983 Report to Respondents," 1983.
3. Coding Memo: No copy on file.

ANNUAL DAS PROJECTS

1984

"The Process of Mate Choice and Nuptiality in Detroit"
Faculty Participant: Martin K. Whyte

Director: Stanley Presser

Associate Director: Jean M. Converse

Teaching Fellows:

Jason Lee

Lynette Kono

Paula Rust

David R. Williams

Administrative Assistant: Carol M. Crawford

Student Participants:

Erica Bell-Lowther

Sue Braunstein

Susan Cleary

Hector L. Delgado

Ruby Gooley

Hao Hongsheng

Jui-shan Hsueh Chang

Masami Iburi

Lynn Jacquot

Inchoon Kim

Mary Kirkland

Karl M. Landis

Amy Lewis

Max Lummis

Karl Monsma

Myra Oltsik

Polly Phipps

Ben Rowe

Laurie Silver

Yos Susanto

Anju Taj

Feng Wang

Fred Ward

Elaine Wethington

Publications and Papers Using 1984 DAS Data:

Whyte, Martin K. (Forthcoming)

Sample description

- Multi-stage area probability sample of housing units in Wayne, Oakland and Macomb Counties.
 - Ever-married women
 - N = 459
 - Response rate (459/620) = 74.0%
 - Interviewing was conducted April - August, 1984
 - Survey was partially replicated in the summer of 1987 in urban Chengdu, the capital city of Sichuan Province, interviewing 586 ever-married women between the ages of 20-70.
-

Documentation

DAS #468633

1. Sampling Memo: "Sampling Report for the 1984 Detroit Area Study," October, 1984 (David R. Williams).
2. Respondent Report: "1984 Report to Respondents," 1984 (Paula Rust).
3. Coding Memo: No copy on file.

1985

"Life Events in Everyday Experience"
 Faculty Participant: Ronald C. Kessler

Director: Stanley Presser

Associate Director: Jean M. Converse

Teaching Fellows:

Karl M. Landis

Jason Lee

Jane D. McLeod

Elaine Wethington

Administrative Assistant: Carol M. Crawford

Student Participants:

Schon Beechler

Kofi Benefo

Erna-Lynne Bogue

Elizabeth Chapleski

Paul Coren

Juan Diez-Medrano

Geraldine Fitzgerald

Susan Gardner

Donna Harris

Thomas Heald

Thomas LaVeist

Shiow Yun Lin

Yu-Hsia Lu

Gayl Marans

Jay Mattlin

Carolyn Miller

Errol Rafal

Mark Simonson

Roger Simpson

Anne Sommer

J. Blake Turner

Robert Wilger

Leon Wilson

Li-Shou Yang

Eva Zurawski

Publications and Papers Using 1985 DAS Data:

Bolger, Niall, Anita DeLongis, Ronald C. Kessler, and Elaine Wethington (Forthcoming-a;b)

Kessler, Ronald C. and Elaine Wethington (Under review), (1988)

Kessler, Ronald C., Anita DeLongis, Roger Haskett, and Margalit Tal (1988)

Landis, Karl M. (1988)

Mattlin, Jay, Elaine Wethington, and Ronald C. Kessler (Under Review)

McLeod, Jane D. (1987), (1988), (Forthcoming)

McLeod, Jane D., Joanne E. Turnbull, and Ronald C. Kessler (Forthcoming)

Schuster, Tonya L., Ronald C. Kessler, and Robert Aseltine (1988)

Turnbull, Joanne E., J. McLeod, J. Callahan, and R. Kessler (1988)

Wethington, Elaine, Jane D. McLeod, and Ronald C. Kessler (1987)

Sample description

- Multi-stage area probability sample of housing units in Wayne, Oakland and Macomb County suburbs (excluding City of Detroit, Hamtramck, and Highland Park).
- Non-black married couples living together, with at least one member of the couple between 18-64 years. Eligibility rate was 53%. The study was based on two independent samples, one administered by DAS (with interviewers drawn from both DAS students and SRC professionals); the other administered by SRC (with interviewers exclusively SRC professionals). Note that DAS/SRC participation in data collection was at approximately 1:3 ratio rather than the usual 1:1.

ANNUAL DAS PROJECTS

- N = 1755 (both samples)
- Total response rate, overall (1755/2309) = 76%
- DAS: 72% of the eligible couples provided at least one interview. Among couples in which at least one member was cooperative, both spouses provided interview in 82% of the cases.
- SRC: 74% of the eligible couples provided at least one interview. Among couples in which at least one member was cooperative, both spouses provided interviews in 79% of the cases.
- Interviewing conducted April - August, 1985
- A Life Events Calendar was used in the schedule, for which a more informal, less standardized ("freeform") interviewing style was used.

Documentation

DAS #468634

1. Sampling Memo: "Sampling Report for the 1985 Detroit Area Study," September, 1986 (Jane D. McLeod and Steve Heeringa).
2. Respondent Report: "Life Events in Everyday Experience: First Report to Respondents."
3. Respondent Report II: "Life Events in Everyday Experience: Second Report to Respondents."
4. Coding Memo: No copy on file.

1986

"Social Change and Vignette Analysis"

Faculty Participants: David Rauma, Stanley Presser, Jean M. Converse

Director: Jean M. Converse

Associate Director: Karl M. Landis

Teaching Fellows:

Donna Harris

Mark Simonson

Polly Phipps

Leon Wilson

Administrative Assistant: Pat Preston

Student Participants:

Anthony Adams

Gary Davis

Matthew Kinney

Mary Asher

Lisa Fell

JungJeen Lee

Dawn Balmforth

Donna Gates

Jinyun Liu

Robert Bass

Jessica Goodman

Naushin Mahmood

Ramon Bosque-Perez

Shenyang Guo

Stefan Natzke

Pam Campanelli
Ann Cary
Jieming Chen
Michael Curtis

Julia Holmes
Stephen Hopkins
Emily Kane

Elizabeth Noble
Mano Venkatraman
Bill Wehrle

Publications and Papers Using 1986 DAS DATA:

Campanelli, Pamela (1987)
Rauma, David (1987)

Sample description

- A multi-stage area probability sample of housing units in Wayne, Oakland and Macomb Counties
 - Adults age 18 and over
 - N = 578
 - Response rate (578/823) = 70.2%
 - This study included a replication of a few items from earlier DAS studies (1955, 1971, 1976) on marriage, household division of labor, women and work; and a replication of a 1976 experimental comparison of alternate question forms.
 - Vignette analysis: The design included a set of questions on perceptions of crime seriousness which was generated by a computer program for vignette analysis. For documentation on this part of the design, consult Dr. David Rauma.
-

Documentation

DAS #468635

1. Sampling Memo: "Sampling Report for the 1986 Detroit Area Study," November, 1986 (Jean M. Converse and Karl M. Landis).
2. Respondent Report: "1986 Report to Respondents," (Donna Harris and Jean M. Converse).
3. Coding Memo: No copy on file.

ANNUAL DAS PROJECTS

1987

"A Study of Greater Detroit, 1987"

(A replication of Gerhard Lenski's study on religion, 1958 DAS)

Faculty Participant: Duane F. Alwin

Director: Jean M. Converse

Associate Director: Polly Phipps

Teaching Fellows:

Michael Curtis

Juan Diez-Medrano

Emily Kane

Leon Wilson

Yu-Hsia Lu

Administrative Assistant: Pat Preston

Student Participants:

William Axinn

Laurie Goldstein

Cheryl Presley

Stephen Bright

Lisa Latowski

Karin Ringheim

Steven Bushwall

Jon Levin

Rosario Sanabria

Rachel Caspar

Xian Liu

Sudha Shreeniwas

Amy Chenoweth

Sheryl Margolis

Douglas Trelfa

Bryan Froehle

Tracy Ore

Pamela Webster

Gloria Gibson

Kelvin Pollard

Ku Yae-Wen Yin

Ren Zhang

Publications and Papers Using 1987 DAS data:

No publications or papers using 1987 data have yet appeared.

Sample description

- A multi-stage area probability sample of housing units in Wayne, Oakland and Macomb Counties
 - Adults 21 years and older
 - N = 554
 - Response rate (554/791) = 70.0%
 - This was a replication of substantial parts of Lenski's study of religion, DAS 1958. A complete comparison of all questions used in the two studies is on file at the DAS Office (see Item 4 below).
 - A companion supplementary sample was drawn for SRC administration in the fall of 1987. While the two interview schedules were not completely identical, most of the items appearing in the DAS study were used again in the SRC study.
-

Documentation

DAS #468636

1. Sampling Memo: "Sampling Report for the 1987 Detroit Area Study," November, 1988 (Jean M. Converse).
2. Respondent Report: "Religion in Detroit, 1958 to 1988," (Duane F. Alwin).
3. Coding Memo: Included in Item 5. "Memo on DAS 1987 Data, October 1987 (Jean M. Converse)
4. "A Comparison of All Questions Used in the 1958 and 1987 Studies," 1987 (Emily Kane).
5. "Memo on DAS 1987 Data," October, 1987 (Jean M. Converse). Corrected 2/25/88

1988

"Perspectives on Care of the Elderly"
 Faculty Participant: William C. Birdsall

Director: Jean M. Converse

Associate Director: Polly Phipps

Teaching Fellows:

Elizabeth Chapleski	Amy Chenoweth
Jieming Chen	Julia Holmes

Administrative Assistant: Andrea G. Johns

Student Participants:

Kathy Bischooping	David Keen	Mingming Shen
Toni Caldwell	Karen Kuhlthau	Kim Simmons
Li-Ju Chen	Diane Marcus	Karen Smith
Michael Couper	Marty Newingham	Gretchen Spreitzer
Diane Cranston	Mary Beth Ofstedal	Cheryl Thompson
Anne Croisier	Teresa Parsley	Marc Tosiano
Lisa Holland	Amy Schulz	John Wallace, Jr.
Phil Jones	Kate Shaw	Jon Weisz

Publications and Papers Using 1988 DAS data:

No publications or papers using 1988 data have yet appeared.

Sample Description

- A multi-stage probability sample of housing units in Wayne, Oakland, and Macomb Counties
 - Adults 21 years and older
 - N = 469
 - Response rate (469/686) = 68.4%
 - Vignette analysis: The design included ten question for each respondent on care of the frail elderly, which were generated by a computer program for factorial/vignette analysis. See documentation memos 4 and 6.
-

Documentation

DAS #468637

1. Sampling Memo: "Sampling Report for the 1988 Detroit Area Study," November, 1988 (Jean M. Converse).
2. Respondent Report: (Forthcoming, Winter, 1988-89).

ANNUAL DAS PROJECTS

3. Coding Memo: "A Report on the 1988 Data," November, 1988 (Jean M. Converse) includes a section on coding.
 4. "Memo on Experimental Design DAS 1988," April 20, 1988 (William C. Birdsall).
 5. "A Proposal for Supplementary Funds: Racial Differences in Views of Appropriate Living Arrangements for the Frail Elderly: Judgments by Detroit Area Residents," April, 1988 (William C. Birdsall).
 6. "Memo for Soc. 512 and 513: Vignette Program(s)," April, 1988 (William C. Birdsall).
-
-

1989

DAS #468638

"Political Participation in the Detroit Area"
Faculty Participant: Steven J. Rosenstone

Director: Jacqueline Scott
Associate Director: Elizabeth Chapleski
Teaching Fellows:
Michael Couper Amy Schulz
Elizabeth Moles Kim Simmons

1. Sampling Memo:
2. Respondent Report:
3. Coding Memo:
4. "Linking DAS to the Greater Detroit Community," April, 1988 (Jean M. Converse and Steven J. Rosenstone). *HIST*

NOTES

- * The sample covered those areas tracted by the 1950 Census. This area includes from 85%-90% (depending on the year) of the population of Wayne, Oakland, and Macomb Counties (the Detroit Standard Metropolitan Statistical Area). From 1976 on, the DAS sample covered the total population of the tri-county area.
- ** In the 1950s, there were typically two interview schedules; a study-specific schedule, which was full length (approximately an hour) and a census-type interview, which was quite brief (approximately 15 minutes). The response rates in these years appear to be calculated on the basis of the total sample, rather than on the portion of the sample that was approached for study-specific interviews.

ABBREVIATIONS

ICPSR	Inter-University Consortium for Political and Social Research, Institute for Social Research, University of Michigan
ISR	Institute for Social Research, University of Michigan
NORC	National Opinion Research Center, Chicago
SMSA	Standard Metropolitan Statistical Area

DIRECTORS OF THE DETROIT AREA STUDY

Ronald Freedman	(1951-1953)
Morris Axelrod	(1954)
Harry Sharp	(1955-1961)
John C. Scott	(1962-1965)
Howard Schuman	(1966-1969)
John C. Scott	(1970)
Howard Schuman	(1971)
Bettye Eidson	(1972-1973)
Elwood Beck	(1974-1975)
Howard Schuman	(1976)
Robert M. Groves	(1976-1977)
David Goldberg	(1978-1980)
Nancy Grassmick (Gebler)	(1981)
Peter V. Miller	(1982)
Stanley Presser	(1983-1985)
Jean M. Converse	(1986-1988)
Jacqueline Scott	(1989)



FACULTY INVESTIGATORS

- James S. Jackson, Psychology and Research Center for Group Dynamics (ISR): 1973
- Morris Janowitz, Sociology: 1954
- Robert L. Kahn, Psychology and Survey Research Center (ISR): 1956
- Daniel Katz, Psychology: 1957
- Irwin Katz, Psychology: 1969
- Ronald C. Kessler, Sociology and Survey Research Center (ISR): 1985
- Leslie Kish, Sociology and Survey Research Center (ISR): 1957
- Werner S. Landecker, Sociology: 1952, 1980
- Edward O. Laumann, Sociology: 1966
- Gerhard Lenski, Sociology: 1952, 1958
- Sheldon Levy, Psychology: 1964
- Eugene Litwak, Social Work: 1963
- Colin Loftin, Sociology: 1979
- Melvin Manis, Psychology: 1977
- Robert W. Marans, Architecture and Urban Planning and Survey Research Center (ISR): 1980
- William M. Masop, Sociology: 1974
- Karen Oppenheim Mason, Sociology and Survey Research Center (ISR): 1974
- Leon Mayhew, Sociology: 1967
- Henry J. Meyer, Social Work and Sociology: 1963
- Daniel R. Miller, Psychology: 1953
- Warren E. Miller, Political Science and Survey Research Center (ISR): 1961
- Theodore M. Newcomb, Psychology and Sociology: 1953
- Stanley Presser, Sociology and Survey Research Center (ISR): 1986
- David E. Rauma, Sociology: 1986
- Albert J. Reiss, Jr., Sociology: 1967
- Joseph Sanders, Sociology: 1977

FACULTY INVESTIGATORS

Howard Schuman, Sociology and Survey Research Center (ISR): 1968, 1969, 1976, 1977

John C. Scott, Survey Research Center (ISR): 1965

David R. Segal, Sociology: 1973

Donald E. Stokes, Political Science and Survey Research Center (ISR): 1961

Guy E. Swanson, Sociology: 1953, 1959

Robert S. Weiss, Survey Research Center (ISR): 1956

Martin K. Whyte, Sociology: 1984

Harold L. Wilensky, Sociology: 1960

Peter Wolff, Survey Research Center (ISR): 1965

Mayer N. Zald, Sociology and Social Work: 1983

