

Unless otherwise noted, the content of this course material is licensed under a Creative Commons Attribution - Non-Commercial - Share Alike 3.0 License.

<http://creativecommons.org/licenses/by-nc-sa/3.0/>

Copyright 2009, Paul Conway.

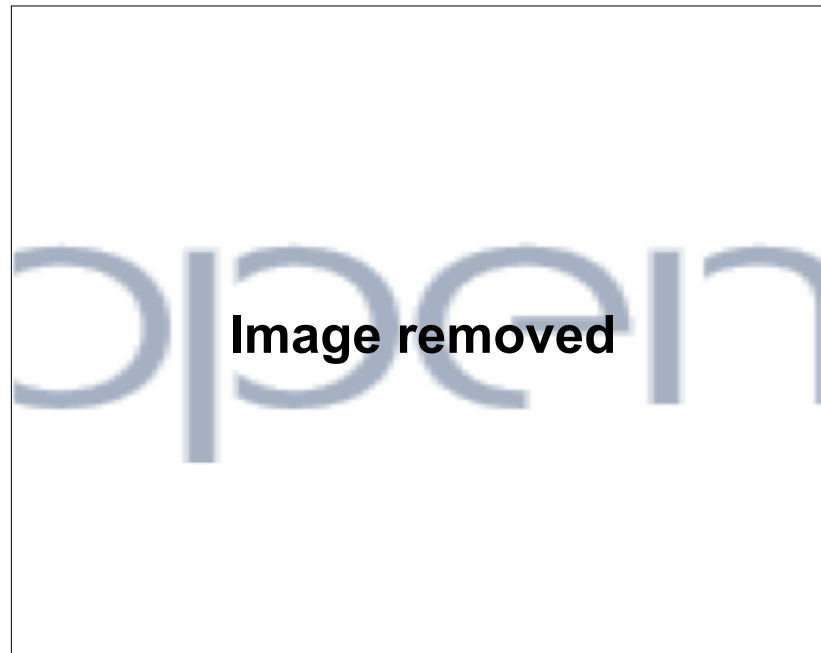
You assume all responsibility for use and potential liability associated with any use of the material. Material contains copyrighted content, used in accordance with U.S. law. Copyright holders of content included in this material should contact [open.michigan@umich.edu](mailto:open.michigan@umich.edu) with any questions, corrections, or clarifications regarding the use of content. The Regents of the University of Michigan do not license the use of third party content posted to this site unless such a license is specifically granted in connection with particular content. Users of content are responsible for their compliance with applicable law. Mention of specific products in this material solely represents the opinion of the speaker and does not represent an endorsement by the University of Michigan. For more information about how to cite these materials visit <http://michigan.educommons.net/about/terms-of-use>.

Any medical information in this material is intended to inform and educate and is not a tool for self-diagnosis or a replacement for medical evaluation, advice, diagnosis or treatment by a healthcare professional. You should speak to your physician or make an appointment to be seen if you have questions or concerns about this information or your medical condition. Viewer discretion is advised: Material may contain medical images that may be disturbing to some viewers.

# SI 640 Digital Libraries and Archives

Week 9 –  
Scholarly Communication and Digital Library Use

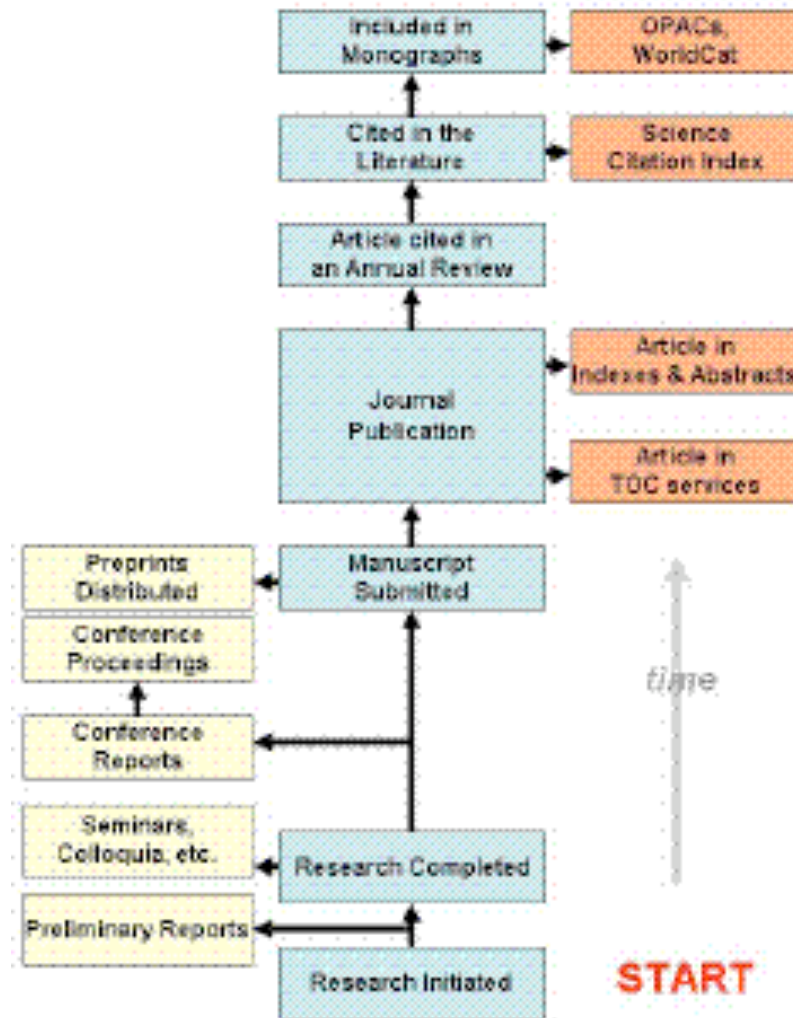
# Pricing Trends in ARL Libraries



Source: Association of Research Libraries

Available online at: <http://www.arl.org/bm~doc/arlstat04.pdf>

# Linear Model of Scholarly Communication



## Value Chain of SC System

- *Registration*, which allows claims of precedence for a scholarly finding.
- *Certification*, which establishes the validity of a registered scholarly claim.
- *Awareness*, which allows actors in the scholarly system to remain aware of new claims and findings.
- *Archiving*, which preserves the scholarly record over time.
- *Rewarding*, which rewards actors for their performance in the communication system based on metrics derived from that system.

• Van de Sompel, D-Lib Magazine, September 2004.

# arXiv Ecology and Service Pathways

Removed image representing the life  
of a pre-print.

Available online at:

[http://www.dlib.org/dlib/september04/  
vandesompel/09vandesompel.html](http://www.dlib.org/dlib/september04/vandesompel/09vandesompel.html)

<http://arxiv.org/>

• Lyon, “eBank UK.” <http://www.ariadne.ac.uk/issue36/lyon/>

# The Scholarly Knowledge Cycle

Image removed, available here:  
[http://www.ariadne.ac.uk/  
issue36/lyon/](http://www.ariadne.ac.uk/issue36/lyon/).

# Design for Usability

- Fluent with Information Technology (1999)
- Nielsen (1993): learnability, efficiency, memorability, errors, and satisfaction.
- Communities: focused or diverse
- Understand behavior, context, practices, expertise, and requirements. (p. 99)
- Search knowledge and skills: conceptual, semantic and syntactic, technical skills. (p. 104)



# Academic Platform

## ■ Functions (Library View)

- Discovery: Scholars Portal discovery tool
- Capture: harvesting and delivery tools
- Manipulation: text-processing and citation-management tools
- Distribution: contribution and publication tools
- Consultation: access to virtual reference services and electronic scholarly communities

# The New Academic Platform

## ■ Academic Productivity Facilitators

- *Discovery*: Scholars Portal discovery tool
- *Capture*: request and delivery tools
- *Integration*: description, classification, and indexing tools
- *Manipulation*: text-processing and citation-management tools
- *Distribution*: contribution and publication tools
- *Consultation*: virtual reference services and access to electronic scholarly communities

# Academic Platform

## ■ Functions (User View)

- Discover relevant information anyplace
- Deliver to the desktop (or place)
- Customize references and organize content
- Manipulate found content (text and image)
- Distribute remotely or publish to Web/  
paper
- Consult experts or engage scholarly  
communities

# Managing Digital Assets in Higher Ed.

- The 'processed' publication
- Intellectual property
- Search
- Research methods
- New publication emphases
- New collection emphases
- Interactions among systems

# Thank you!

---

**Paul Conway**

*Associate Professor*

School of Information

University of Michigan

[www.si.umich.edu](http://www.si.umich.edu)