

## The genetic structure of a tribal population, the Yanomama Indians

### III. Seven serum protein systems\*

By L. R. WEITKAMP,†‡ T. ARENDS,§ M. L. GALLANGO,§ J. V. NEEL,†  
J. SCHULTZ† AND D. C. SHREFFLER†

The Yanomama Indians are a tribe of slash-and-burn cultivators who live deep in the tropical forests of southern Venezuela and northern Brazil. As a part of a larger study of microdifferentiation and gene flow we report the results of genetic typing of the haptoglobin (Hp), transferrin (Tf), Group Specific Component (Gc), albumin (Alb), ceruloplasmin (Cp) and two beta lipoprotein (Ag and Lp) systems in Yanomama Indians from 37 villages, each with 31 to 176 sampled individuals. The findings in several villages in which fewer than 30 individuals were sampled have been grouped together in a 'miscellaneous' category. The total number of persons typed for each system ranges between 359 (Ag system) and 2503 (Gc system). A report listing preliminary gene frequencies for the first ten of these villages has been previously prepared (Arends *et al.* 1967). The location of the villages and a description of the dates and techniques of blood collection and transport are given in Gershowitz *et al.* (1972) and Ward (1972).

#### METHODS

Typing for the seven serum protein systems was performed at the University of Michigan and at the Instituto Venezolano de Investigaciones Cientificas (IVIC). For some systems in some villages the types were independently determined at both IVIC and the University of Michigan (see below). Discrepancies in the findings in the two laboratories were reconciled by repeat typings in one or both laboratories.

In Michigan, for all but the first ten villages (03 KP through 11 HI) haptoglobin, transferrin, Group Specific Component, and albumin were typed using vertical starch-gel electrophoresis (lots 174, 350 and 682, Electro Starch Co., Madison, Wisconsin) according to the modifications of the techniques of Smithies (1959) and the buffer of Gahne (1963) as described by Bowman & Bearn (1965), except that gels were run for 16–18 hr. at approximately 25 V./cm. (cf. Fig. 1). Amido Black 10B was used for the protein stain (Tf, Gc and Alb) and either *o*-dianisidine (Owen, Silberman & Got, 1958) or benzidine-nitroprusside (Higashi & Lubs, 1966) for specific haptoglobin staining. In villages 03 A through 03 J Gc typing was performed on 8 × 10 cm glass slides, using the buffer system and electrophoretic conditions described by Hirschfeld (1959) and a rabbit antiserum prepared against partially purified Gc protein. Screening for variants of ceruloplasmin was carried out with starch-gel electrophoresis either as described by Shreffler *et al.* (1967), or by the technique described above for haptoglobin, transferrin, Gc and albumin, but utilizing *o*-dianisidine as the specific Cp stain (Shreffler *et al.* 1967). Both methods give very comparable

\* These investigations were funded in part by U.S. Atomic Energy Commission Grant AT(11-1)-1552.

† Department of Human Genetics, University of Michigan Medical School, Ann Arbor, Michigan 48104.

‡ Present address: Departments of Anatomy and Pediatrics, University of Rochester School of Medicine and Dentistry, Rochester, New York.

§ Hematologia Experimental, Instituto Venezolano de Investigaciones Cientificas, Apartado 1827, Caracas, Venezuela.

results. Albumin typing was also performed in one of the two vertical starch-gel systems used by Weitkamp *et al.* (1969): in villages 03 A through 08 T every other specimen was run in the acetate-EDTA, pH 5.0 system and the alternate sample in the tris-EDTA-borate, pH 6.9 system; all specimens in 03 X were typed in both systems, and all specimens in villages 08 O through 011 HI were typed only in the acetate-EDTA, pH 5.0 system.

Tests for the presence of the Lp(a) factor were performed on frozen plasma stored at  $-70^{\circ}\text{C}$ . or on fresh plasma examined within 48 hr. of arrival of the specimens. Standard Ouchterlony double diffusion tests were carried out in 65 mm. glass Petri dishes. The antiserum employed was a rabbit anti-Lp(a+); its preparation as well as the media and laboratory conditions have been previously described (Schultz, Schreffler & Harvie, 1968).

At IVIC the procedures employed were essentially as described by Arends *et al.* (1970).

## RESULTS

### *The known polymorphisms*

The results of the classification for haptoglobin, Gc, transferrin, albumin, ceruloplasmin, Lp, and Ag are listed in Table 1. Transferrin, albumin, and ceruloplasmin are not polymorphic in this population. The gene frequencies for three of the four polymorphic systems (Hp, Gc and Ag) are given in Table 2. Recent genetic studies in one of our laboratories (Schultz, 1970) have failed to confirm the autosomal dominant mode of inheritance previously proposed for the Lp(a) trait (Berg, 1963), at least for our test conditions. Since a more complex mode of inheritance is indicated, the calculation of Lp gene frequencies seems inappropriate and these are not included in Table 2. Of necessity, the Ag gene frequencies are calculated by taking the square roots of the respective recessive phenotype frequencies, assuming Hardy-Weinberg equilibrium. However, as we have emphasized in studies of other Indian villages (Neel *et al.* 1964), mating in these villages does not meet Hardy-Weinberg restrictions. In the past this has not introduced a serious problem into gene frequency calculations.

In order to evaluate again the errors likely to be introduced by the assumption of random mating, the Hp and Gc gene frequencies have been calculated by taking the square root of the Hp 1-1 and Gc 1-1 phenotype frequencies as well as by direct enumeration. With respect to the differences in the Gc system due to the two methods of calculation, the gene frequencies differed by more than 0.02 in only three villages and never by more than 0.04. In 18 villages there is no discrepancy. The frequencies calculated by the assumption of Hardy-Weinberg equilibrium equally under- and over-estimated the true gene frequency determined by enumeration. Evaluation of the two methods of calculation with respect to haptoglobin is more complex. There was a considerable gradation in the intensity of haptoglobin staining among individuals; this plus the absence of the 2-1 M type in the Yanomama makes it probable that the 271 individuals without discernible haptoglobin (11.0%) are instances of the acquired rather than genetic type of Hp O. These individuals have been excluded from both types of gene frequency calculations. There is risk in this, however, since it is technically easier to be certain about the presence of weakly staining haptoglobin bands in persons with the 2-1 or 2-2 phenotype rather than those with the 1-1 phenotype. In addition, the lesser sensitivity of the *o*-dianisidine staining procedure may have intensified a bias in those villages (earlier collections) in which this technique was used.

In fact, however, there is a minimally larger discrepancy between the two methods of calculation in the Hp system compared to the two methods in the Gc system. (In the Hp system no

Table 1. Summary of the haptoglobin, Group Specific Component, transferrin, albumin, ceruloplasmin, and lipoprotein (Lp and Ag) Phenotypes in 37 Yanomama villages

Village ...	03 A	03 B	03 C	03 D	03 E	03 F	03 G	03 H	03 I	03 J	03 KP	03 LMN	03 Q	03 RS	03 T	03 U	03 W	03 X	08 ABC	08 D	08 E	08 F	08 I	08 J	08 L	08 N	08 O	08 Q	08 R	08 S	08 T	08 UVW	08 XY	11 ABC	11 D	11 G	11 HI	Misc.	Total
Hp 1-1	47	36	26	17	43	20	32	19	33	28	57	48	28	15	11	33	40	45	116	23	34	32	17	53	51	33	23	11	34	32	17	114	99	91	38	13	74	61	1549
2-1	7	3	9	13	5	8	7	24	8	27	14	17	7	17	11	22	26	47	6	3	6	3	6	9	12	1	9	26	20	17	7	25	20	54	12	20	43	28	616
2-2	1	1	2	3	1	1	1	4	1	2	1	1	1	2	1	2	2	2	2	2	1	3	1	3	1	1	1	10	3	1	1	1	3	2	5	4	2	59	
0	20	3	17	43	10	2	9	5	6	4	1	1	1	26	23	1	1	11	11	3	1	15	6	2	9	16	3	1	15	6	23	3	2	4	4	8	271		
Total	75	42	54	76	58	31	48	52	47	62	72	67	35	69	53	44	65	74	170	31	38	32	31	62	32	72	50	35	48	57	64	31	162	119	150	38	125	99	2495
Gc 1-1	64	49	53	69	54	32	46	30	45	42	56	44	25	49	29	18	55	54	166	12	29	22	46	22	63	45	19	49	41	55	26	152	86	126	40	21	103	66	1075
2-1	12	3	3	7	2	2	10	5	16	16	16	20	9	26	20	21	10	14	10	17	9	9	16	10	9	5	14	8	15	9	5	10	31	22	10	13	20	23	471
2-2	1	1	1	1	1	1	1	1	1	1	1	1	1	2	4	4	7	7	1	1	1	1	1	1	1	1	2	1	1	1	1	1	1	1	2	4	2	10	57
Total	76	43	55	76	59	34	48	54	50	59	72	68	35	68	53	43	65	75	176	31	38	32	62	32	72	50	35	48	57	64	31	162	119	150	50	38	125	98	2593
Tf C	66	36	46	72	29	24	38	39	26	52	72	68	35	69	53	44	65	75	176	31	38	32	62	32	72	50	35	48	57	64	31	162	119	150	50	38	125	99	2425
Alb Normal	51	26	35	50	14	16	33	30	24	34	72	68	34	68	53	43	64	71	176	31	38	32	62	32	72	50	35	48	57	64	31	161	119	150	50	38	125	99	2256
Maku	1	1	1	1	1	1	1	1	1	1	1	1	1	1	1	1	1	1	1	1	1	1	1	1	1	1	1	1	1	1	1	1	1	1	1	1	1	4	4
Yanomama	1	1	1	1	1	1	1	1	1	1	1	1	1	1	1	1	1	1	1	1	1	1	1	1	1	1	1	1	1	1	1	1	1	1	1	1	1	1	1
Total	51	26	35	50	14	16	33	30	24	34	72	68	34	68	53	43	64	75	176	31	38	32	62	32	72	50	35	48	57	64	31	162	119	150	50	38	125	99	2261
Op B	77	43	55	76	60	34	48	54	50	60	71	67	35	68	53	44	65	75	176	31	38	32	62	32	72	50	35	48	57	64	31	160	76	105	50	38	125	99	2416
A	1	1	1	1	1	1	1	1	1	1	1	1	1	1	1	1	1	1	1	1	1	1	1	1	1	1	1	1	1	1	1	1	1	1	1	1	1	1	1
Total	77	43	55	76	60	34	48	54	50	60	71	67	35	69	53	44	65	75	176	31	38	32	62	32	72	50	35	48	57	64	31	160	76	105	50	38	125	99	2417
Lp a-	71	1	1	1	1	1	1	1	1	1	1	1	1	1	1	1	1	1	1	1	1	1	1	1	1	1	1	1	1	1	1	1	1	1	1	1	1	1	1
a+	1	1	1	1	1	1	1	1	1	1	1	1	1	1	1	1	1	1	1	1	1	1	1	1	1	1	1	1	1	1	1	1	1	1	1	1	1	1	1
Ambiguous	1	1	1	1	1	1	1	1	1	1	1	1	1	1	1	1	1	1	1	1	1	1	1	1	1	1	1	1	1	1	1	1	1	1	1	1	1	1	1
Total	71	1	1	1	1	1	1	1	1	1	1	1	1	1	1	1	1	1	1	1	1	1	1	1	1	1	1	1	1	1	1	1	1	1	1	1	1	1	1
Ag a-	67	24	35	50	28	19	24	24	15	32	41	37	21	42	36	43	46	25	169	31	27	27	55	29	66	31	28	45	35	57	21	142	95	113	34	38	22	63	1010
a+	2	5	1	15	3	5	4	15	4	15	4	2	1	22	17	1	19	50	4	16	4	16	4	1	1	5	18	4	1	9	2	10	18	24	37	16	3	31	352
Total	69	29	36	65	31	24	28	39	15	36	45	39	22	68	60	44	65	75	173	31	37	31	56	30	71	49	32	46	45	59	31	160	119	150	50	38	125	94	2263

Table 2. Summary of the gene frequencies in the Hp, Gc and Ag systems in 37 Yanomama villages

Village ...	03 A	03 B	03 C	03 D	03 E	03 F	03 G	03 H	03 I	03 J	03 KP	03 LMN	03 Q	03 RS	03 T	03 U	03 W	03 X	08 ABC	08 D	08 E	08 F	08 I	08 J	08 L	08 N	08 O	08 Q	08 R	08 S	08 T	08 UVW	08 XY	11 ABC	11 D	11 G	11 HI	Misc.	Total	
Hp <sup>1</sup>	0.92	0.96	0.82	0.71	0.95	0.83	0.91	0.66	0.90	0.72	0.89	0.86	0.90	0.78	0.65	0.88	0.80	0.79	0.85	0.84	0.93	0.81	0.93	0.85	0.85	0.90	0.99	0.86	0.51	0.77	0.83	0.82	0.91	0.92	0.80	0.88	0.61	0.79	0.82	0.83
Hp <sup>2</sup>	0.08	0.04	0.18	0.29	0.05	0.17	0.09	0.34	0.10	0.28	0.11	0.14	0.10	0.22	0.35	0.12	0.20	0.21	0.15	0.16	0.07	0.19	0.07	0.15	0.10	0.01	0.14	0.49	0.23	0.17	0.18	0.09	0.08	0.20	0.12	0.39	0.21	0.18	0.17	
(sq. rt. method)	0.92	0.96	0.84	0.72	0.95	0.83	0.91	0.64	0.90	0.69	0.89	0.85	0.89	0.76	0.61	0.87	0.79	0.79	0.84	0.86	0.95	0.85	0.92	0.84	0.90	0.99	0.85	0.48	0.77	0.81	0.82	0.91	0.91	0.78	0.87	0.58	0.78	—	0.83	
Gc (enumeration)	0.92	0.97	0.97	0.95	0.93	0.97	0.98	0.73	0.95	0.85	0.89	0.79	0.84	0.78	0.74	0.66	0.92	0.81	0.96	0.66	0.66	0.88	0.83	0.87	0.84	0.94	0.95	0.74	0.92	0.85	0.93	0.92	0.97	0.85	0.91	0.90	0.72	0.90	0.79	0.88
Gc <sup>2</sup>	0.08	0.03	0.03	0.05	0.07	0.03	0.02	0.27	0.05	0.15	0.11	0.21	0.16	0.22	0.26	0.34	0.08	0.19	0.04	0.34	0.12	0.17	0.13	0.16	0.06	0.05	0.26	0.08	0.15	0.07	0.08	0.03	0.15	0.09	0.10	0.28	0.10	0.21	0.12	
(sq. rt. method)	0.92	0.96	0.97	0.95	0.96	0.97	0.98	0.75	0.95	0.86	0.88	0.80	0.85	0.77	0.74	0.65	0.92	0.85	0.97	0.62	0.62	0.87	0.83	0.86	0.83	0.94	0.95	0.74	0.91	0.85	0.93	0.92	0.97	0.85	0.92	0.89	0.74	0.91	—	0.89
Ag <sup>2</sup>	0.01	0.09	0.01	0.12	0.05	0.11	0.07	0.22	0	0.06	—	—	—	—	—	—	—	—	—	—	—	—	—	—	—	—	—	—	—	—	—	—	—	—	—	—	—	—	0.08	
Ag <sup>1</sup>	0.99	0.91	0.99	0.88	0.95	0.89	0.93	0.78	1.00	0.94	—	—	—	—	—	—	—	—	—	—	—	—	—	—	—	—	—	—	—	—	—	—	—	—	—	—	—	—	0.92	

villages have a gene frequency difference greater than 0.04, five villages have a difference greater than 0.02 and 12 villages show no difference.) An increased discrepancy does not appear to occur in the villages with a higher frequency of Hp O individuals. On the other hand, the gene frequency calculation on the assumption of Hardy-Weinberg equilibrium taken for each village individually slightly underestimates on average the true gene frequency for Hp<sup>1</sup> obtained by enumeration, a situation consistent with the above-mentioned possibility of bias in Hp typing for technical reasons. In summary, it seems doubtful that the gene frequencies are significantly in error either in the haptoglobin system as a result of bias introduced by the large number of Hp O individuals or in the Ag system as a result of non-random mating.

Village differences in gene frequency are, if taken at face value, large. Thus, the frequency of Hp<sup>1</sup> varies from 0.51 to 0.98, Gc<sup>1</sup> from 0.66 to 0.98 and Ag<sup>a</sup> (ten villages only) from 0.01 to 0.12. Further, the Lp(a) phenotype varies in frequency from 0.0 to 0.67. The difficulties in applying standard statistical tests to the significance of such differences have been discussed elsewhere (Gershowitz *et al.* 1967). The distribution of Gc gene frequencies approximates the range found in seven Makiritare villages (Gc<sup>1</sup>, 0.64–0.89; Arends *et al.* 1970), a tribe whose distribution overlaps in part that of the Yanomama (Chagnon *et al.* 1970). However, the gene frequencies for Hp<sup>1</sup> in the Makiritare range from 0.24 to 0.65 (mean = 0.42), a rather different distribution.

#### 'Private' variants

Two types of rare albumin variants were found. Albumin Máku, a rapidly migrating variant found in four individuals in village 03 X, has been previously discussed (Weitkamp & Chagnon, 1968; Chagnon *et al.* 1970). A different type of albumin variant, not previously reported, was found in one individual in village 08 UVW. Unfortunately, both of his parents were deceased, and he had no offspring. A comparison of the albumin pattern in this individual with the patterns obtained from an individual in the family studied by Fraser, Harris & Robson (1959) and by Weitkamp *et al.* (1968), with albumin Makiritare (Arends *et al.* 1970), and with a dimer of normal albumin is shown in Fig. 1A. The bands in the position of the single arrow have been previously demonstrated to correspond with a dimer of albumin (Harris, 1961; Poulik, Zuelzer & Meyer, 1961; Laurell & Niléhn, 1966; Jamieson & Ganguly, 1969). Laurell & Niléhn (1966) first demonstrated a genetically determined broadening of the main albumin band on agarose gel electrophoresis in a Swedish family. On vertical starch-gel electrophoresis there was no increase in the breadth of the albumin band, but there was an additional minor band of albumin between the post-albumins and the 'fast  $\alpha_2$ -globulin zone'. This band disappeared after reduction with mercaptoethanol.

A variant albumin reported in an American Negro family (Jamieson & Rohde, 1966) has been extensively studied by Jamieson & Ganguly (1969). This variant appeared to be produced as a result of dimerization involving non-covalent as well as disulphide bonds. They also demonstrated both a widening of the main albumin band and the presence of dimer on a single acrylamide gel. Using the vertical starch-gel electrophoretic systems referenced in this paper, no difference in mobility in either the monomer zone or the dimer zone could be detected among the albumin variants in the Welsh, Swedish and American Negro families reported by Fraser *et al.* (1959), Laurell & Niléhn (1966) and Jamieson & Rohde (1966), respectively (Weitkamp, unpublished). Turning again to Fig. 1A, note the slightly more cathodal mobility of dimer albumin (single arrow) in an individual from the family described by Fraser *et al.* (1959) (position 5) compared

to albumin dimer produced by denaturation of normal serum with acetone (position 7). The apparent dimer in albumin Yanomama (position 3 and 6) has a mobility slightly cathodal to that in position 5. In addition there is an elongation of the main albumin band cathodally (region of the double arrow). In albumin Makiritare (position 4) there is an even greater elongation of the main albumin zone and a still more cathodal position for the dimer variant. The pattern for albumin Makiritare is more clearly portrayed in an earlier photograph (Fig. 1B,

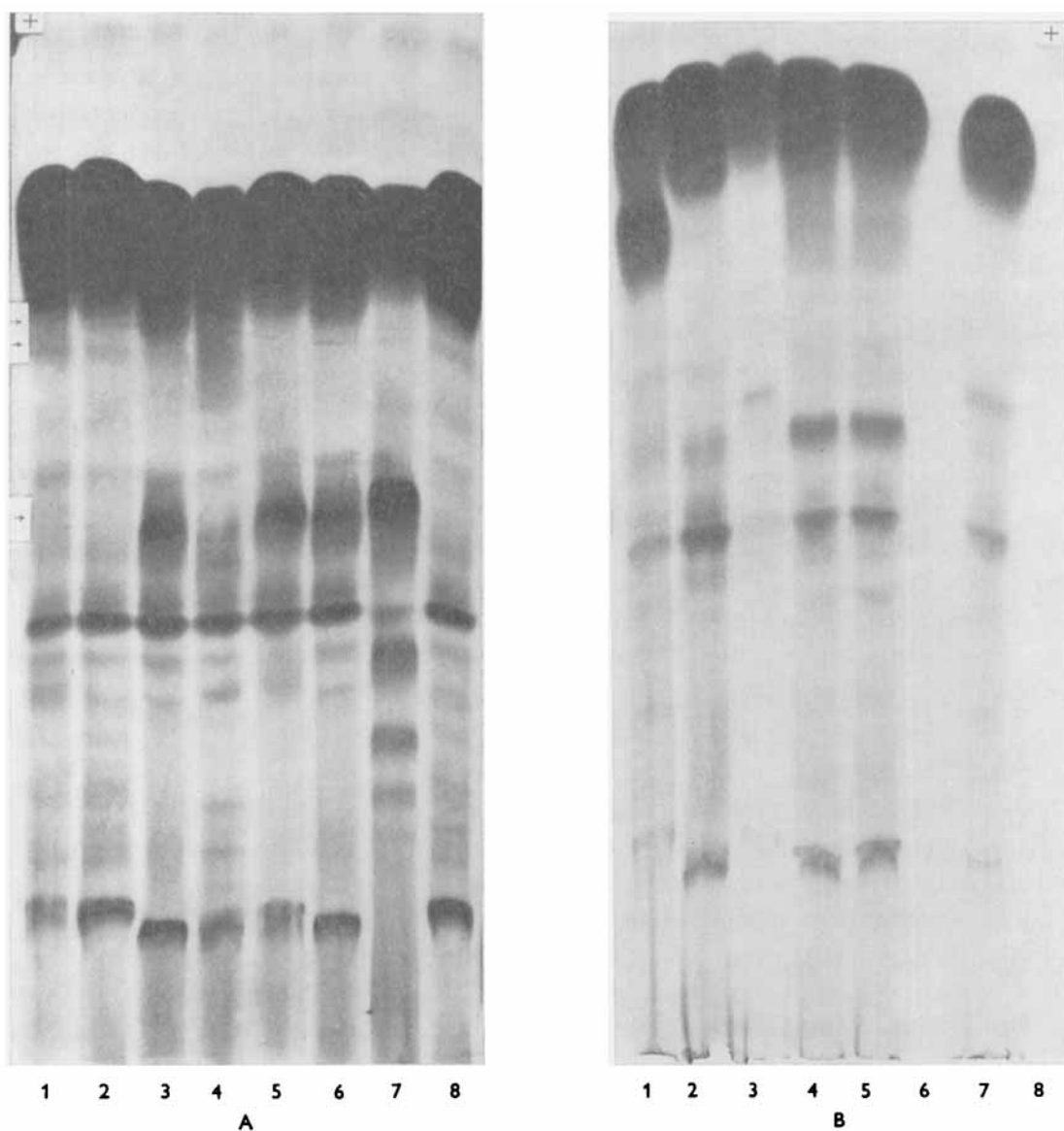


Fig. 1. Vertical starch-gel electrophoresis of human serum (see text for procedure). Origin is at the bottom, anode at the top. From left to right, Gel A: position 1, normal serum; 2, normal serum; 3, albumin Yanomama; 4, albumin Makiritare; 5, albumin of Fraser *et al.* (1959); 6, albumin Yanomama; 7, normal serum denatured by precipitation in acetone, resuspended in distilled water; 8, normal serum. Gel B. position 1, family 10 (Weitkamp *et al.* 1969); 2, normal serum; 3, albumin of Fraser *et al.* (1959); 4 and 5, albumin Makiritare; 6, empty; 7, normal serum denatured by precipitation in acetone, resuspended in distilled water; 8, empty.

positions 4 and 5). An example from the class of most slowly migrating monomeric albumin variants is also shown in Fig. 1B (position 1).

From the correlation of the increasing cathodal mobility of the dimer albumin band with the increasing cathodal elongation of the main albumin band (albumin Makiritare > albumin Yanomama > Welsh, Swedish and American Negro dimer variants > normal albumin) it seems likely that the dimer variants are the result of monomeric albumin variants which have an increased tendency to dimerize. The relatively less intensely staining monomeric variant band in albumin Makiritare (gel 1B, position 4 and 5) compared to the monomeric variant band in family 10 (position 1) is consistent with such a conversion of monomeric variant to dimer. In addition, a similar value for the recombination fraction between alleles producing the dimer variant of Fraser *et al.* (Weitkamp *et al.* 1968), the Makiritare dimer variant (Arends *et al.* 1970), and a number of monomeric variants (Weitkamp *et al.* 1970) with alleles at the Gc locus is also consistent with the notion that all of these variants may be products of alleles at a single albumin locus.

The rapidly migrating ceruloplasmin variant found in apparently heterozygous condition with CpB in a woman in village 03 RS has a mobility similar to CpA. Unfortunately, the proposita's only tested relative was a sister who had the usual CpB phenotype. As in the case of albumin Yanomama the variant phenotype was repeatable and did not appear to be due to an artifact. Our inability to obtain repeat specimens in populations of this type, however, demands some diffidence in concluding, in the absence of confirmatory evidence of affected relatives, that the variant is genetically determined.

In a preliminary report (Arends *et al.* 1967) we mentioned the occurrence of two individuals with an apparently slowly migrating transferrin fraction (which, however, migrated more rapidly than Tf D<sub>chl</sub>). One of these individuals had no identified relatives, but the other had normal parents and six apparently normal siblings. Repeat studies on stored samples reveal a broad transferrin band, but the division into two distinct components so important to the designation of a variant is lacking.

#### DISCUSSION

The present findings confirm and extend the earlier report of microdifferentiation among the Yanomama villages for certain polymorphisms, and the absence of polymorphism in the other systems known to be polymorphic in some Indian tribes (Arends *et al.* 1967). Similar findings have been reported for a tribe adjacent to the Yanomama, the Makiritare (Gershowitz *et al.* 1970, *et seq.*). These are the first two relatively undisturbed tribes to be studied in such detail, so that any attempt at generalization would be premature, but one is perhaps permitted to speculate that the internal heterogeneity of tribal populations has been insufficiently appreciated in the past.

A discussion of the private variants is included in a subsequent paper (Weitkamp & Neel, 1972). Here we note only that among the 11,785 electrophoretic determinations of proteins (Hp, Gc, Tf, Cp and Alb) there were three instances of different private variants (excluding ahaptoglobinaemia and the two possible transferrin variants). The genetic status of two of these, albumin Yanomama and the ceruloplasmin variant, is noted above. The third, albumin Máku, was found in a captured Máku Indian woman and three of her descendants. Her parents were not available for testing.

The possible finding of another albumin variant (albumin Yanomama) indicates that perhaps five or six different albumin variants have been found among Indians of the American continent: three monomer variants (Weitkamp *et al.* 1969) as well as the dimer variants described here and in Arends *et al.* (1970) (Table 3). Thus far characterization has rested with electrophoretic differences, but undoubtedly the structural analysis of variants which is only now becoming possible (Jamieson & Ganguly, 1969; Winter & Rucknagel, 1971) will be necessary for definitive studies (especially when dealing with albumin dimer variants) and attempts to correlate structure with function.

Table 3. *Albumin variants found among Indians of the American continent*

Variant	Population	Reference
Albumin dimer variants		
Alb Warao	Warao, Venezuela	Arends <i>et al.</i> 1969
Alb Makiritare*	Makiritare, Venezuela	Arends <i>et al.</i> 1970
Alb Yanomama	Yanomama, Venezuela	This report
Albumin structural variants		
Alb Naskapi	Naskapi, U.S.A.	Melartin & Blumberg, 1966
Alb Máku	Máku, Brazil	Weitkamp & Chagnon, 1968
Alb Mexico	Zapoteco, Mexico	Melartin <i>et al.</i> 1967

\* Not certainly different from Alb Warao.

It is noteworthy that of 2308 Yanomama Indians examined for the transferrin system, no variants different from the common transferrin, C, were found. The presence of transferrin D<sub>chl</sub> in South American Indians (as well as other mongoloids) is not unusual (Arends, 1967) and there is even one tribe where the frequency of Tf D<sub>chl</sub> approaches the more common Tf C (Arends & Gallango, 1964). If it develops that the presence of transferrin D<sub>chl</sub>, although in low frequency, characterizes most Indian tribes, suggesting it may have been present from an early stage in Indian prehistory, this would constitute a case of loss of genetic variability in the Yanomama, of a type to be discussed in the following paper (Weitkamp & Neel, 1972).

The haptoglobin system presents two important characteristics in this population. Firstly, 271 individuals were found without haptoglobin, the proportion reaching in some villages (03 A, 03 C, 03 D, 03 RS, 03 T) 27–56 % of the entire population. These populations are situated for the most part on the banks of the Orinoco River and its tributaries, where malaria pressure may be assumed to be especially heavy, with resulting ahaptoglobinaemia because of the haemolytic process always accompanying this infection. On the other hand, the same Yanomama Indians living in Santa Maria del Erebató (villages 08 D, 08 E and 08 F), where ecologic conditions are not as favourable for the transmission of malaria, do not exhibit ahaptoglobinaemia. Secondly, it should be emphasized that there were no cases of Hp 2–1 (mod) in the 2476 individuals studied, confirming the absence of this gene in South American Indians (Arends, 1967).

#### SUMMARY

Data are presented on the results of typing Yanomama Indians in 37 villages, each with 31–176 sampled individuals, for seven serum protein systems (Hp, Gc, Tf, Lp, Cp, Ag and Alb). The findings confirm and extend substantially our earlier report of marked intervillage

micro-differentiation for the polymorphic systems (Hp, Gc, Lp and Ag). Among a total of 11,785 determinations in suitable systems (Hp, Gc, Tf, Cp and Alb), there were three instances of different 'private' variants.

## REFERENCES

- ARENDS, T. (1967). Los grupos séricos humanos determinables por métodos electroforéticos: su distribución en Sur América. *Acta Cient. Venezolano* **3**, 162.
- ARENDS, T. & GALLANGO, M. L. (1964). Transferrins in Venezuelan Indians: high frequency of a slow-moving variant. *Science, N.Y.* **143**, 367.
- ARENDS, T., BREWER, G., CHAGNON, N., GALLANGO, M. L., GERSHOWITZ, H., LAYRISSE, M., NEEL, J., SHREFFLER, D., TASHIAN, R. & WEITKAMP, L. (1967). Intratribal genetic differentiation among the Yanomama Indians of southern Venezuela. *Proc. Natn. Acad. Sci. U.S.A.* **57**, 1252.
- ARENDS, T., GALLANGO, M. L., LAYRISSE, M., WILBERT, J. & HEINEN, H. D. (1969). Albumin Warao: new type of human alloalbuminemia. *Blood* **33**, 414.
- ARENDS, T., WEITKAMP, L. R., GALLANGO, M. L., NEEL, J. V. & SCHULTZ, J. (1970). Gene frequencies and microdifferentiation among the Makiritare Indians. II. Seven serum protein systems. *Am. J. Hum. Genet.* **22**, 526.
- BERG, K. (1963). A new serum type system in man - the Lp system. *Acta Path. Microbiol. Scand.* **59**, 369.
- BOWMAN, B. H. & BEARN, A. G. (1965). The presence of subunits in the inherited group specific component of human serum. *Proc. Natn. Acad. Sci. U.S.A.* **53**, 722.
- CHAGNON, N. A., NEEL, J. V., WEITKAMP, L. R., GERSHOWITZ, H. & AYRES, M. (1970). The influence of cultural factors on the demography and pattern of gene flow from the Makiritare to the Yanomama Indians. *Am. J. Phys. Anthropol.* **32**, 339.
- FRASER, G. R., HARRIS, H. & ROBSON, E. B. (1959). A new genetically determined plasma protein in man. *Lancet* *i*, 1023.
- GAHNE, B. (1963). Inherited variations of the post-albumins of cattle serum. *Hereditas* **50**, 126.
- GERSHOWITZ, H., JUNQUEIRA, P. C., SALZANO, F. M. & NEEL, J. V. (1967). Further studies in the Xavante Indians. III. Blood groups and ABH-Le<sup>a</sup> secretor types in the Simões Lopes and São Marcos Xavantes. *Am. J. Hum. Genet.* **19**, 502.
- GERSHOWITZ, H., LAYRISSE, M., LAYRISSE, Z., NEEL, J. V., BREWER, C., CHAGNON, N. & AYRES, M. (1970). Gene frequencies and microdifferentiation among the Makiritare Indians. I. Eleven blood group systems and the ABH-Le secretor traits: A note on Rh gene frequency determinations. *Am. J. Hum. Genet.* **22**, 515.
- GERSHOWITZ, H., LAYRISSE, M., LAYRISSE, Z., NEEL, J., CHAGNON, N. & AYRES, M. (1972). The genetic structure of a tribal population, the Yanomama Indians. II. Eleven blood group systems and the ABH-Le secretor traits. *Ann. Hum. Genet., Lond.* **35**, 261.
- HARRIS, H. (1961). Inherited variations of human plasma proteins. *Br. Med. Bull.* **17**, 217.
- HIGASHI, G. I. & LUBS, H. A., JR. (1966). Quantitative variations of haptoglobins in a Caucasian family. *J. Med. Genet.* **3**, 281.
- HIRSCHFELD, J. (1959). Individual precipitation patterns of normal rabbit sera. *Acta Path. Microbiol. Scand.* **46**, 220.
- JAMIESON, G. A. & ROHDE, V. C. (1966). Genetically determined albumin dimer in a normal blood donor. *Proc. 11th Cong. Int. Soc. Blood Transfusion, Sydney*. *Bibl. Haemat.*, no. 29, part I, p. 415. Basel: S. Karger A. G.
- JAMIESON, G. A. & GANGULY, P. (1969). Studies on a genetically determined albumin dimer. *Biochem. Genet.* **3**, 403.
- LAURELL, C. B. & NILÉHN, J. E. (1966). A new type of inherited serum albumin anomaly. *J. Clin. Invest.* **45**, 1935.
- MELARTIN, L. & BLUMBERG, B. S. (1966). Albumin Naskapi: a new variant of serum albumin. *Science* **153**, 1664.
- MELARTIN, L., BLUMBERG, B. S. & LISKER, P. (1967). Albumin Mexico, a new variant of serum albumin. *Nature* **215**, 1288.
- NEEL, J. V., SALZANO, F. M., JUNQUEIRA, P. C., KEITER, F. & MAYBURY-LEWIS, D. (1964). Studies on the Xavante Indians of the Brazilian Mato Grosso. *Am. J. Hum. Genet.* **16**, 52.
- OWEN, J. A., SILBERMAN, H. J. & GOT, C. (1958). Detection of haemoglobin, haemoglobin-haptoglobin complexes and other substances with peroxidase activity after zone electrophoresis. *Nature, Lond.* **182**, 1373.
- POULIK, M. D., ZUELZER, W. W. & MEYER, R. (1961). Proteins in normal and nephrotic sera with filter paper electrophoretic mobility of albumin. *J. Lab. Clin. Med.* **57**, 206.
- SCHULTZ, J. S. (1970). Immunochemical and genetic studies of the Lp system of human serum lipoproteins. Doctoral Dissertation, Ann Arbor: University of Michigan.



- SCHULTZ, J. S., SHREFFLER, D. C. & HARVIE, N. R. (1968). Genetic and antigenic studies and partial purification of a human serum lipoprotein carrying the Lp antigenic determinant. *Proc. Natn. Acad. Sci. U.S.A.* **61**, 963.
- SHREFFLER, D. C., BREWER, G. J., GALL, J. C. & HONEYMAN, M. S. (1967). Electrophoretic variation in human serum ceruloplasmin: A new genetic polymorphism. *Biochem. Genet.* **1**, 101.
- SMITHIES, O. (1959). An improved procedure for starch-gel electrophoresis: Further variations in the serum proteins of normal individuals. *Biochem. J.* **71**, 585.
- WARD, R. (1972). The genetic structure of a tribal population, the Yanomama Indians. V. A comparison of intervillage ethnic distances with ethnohistory. *Ann. Hum. Genet.* (in the Press).
- WEITKAMP, L. R. & CHAGNON, N. A. (1968). Albumin Máku: a new variant of human serum albumin. *Nature, Lond.* **217**, 759.
- WEITKAMP, L. R., ROBSON, E. B., SHREFFLER, D. C. & CORNEY, G. (1968). An unusual human serum albumin variant. Further data on genetic linkage between loci for human serum albumin and Group-Specific Component (Gc). *Am. J. Hum. Genet.* **20**, 392.
- WEITKAMP, L. R., FRANGLIN, G., ROKALA, D. A., POLESKY, H. F., SIMPSON, N. E., SUNDERMAN, F. W., JR., BELL, H. E., SAAVE, J., LISKER, R. & BOHLS, S. W. (1969). An electrophoretic comparison of human serum albumin variants: Eight distinguishable types. *Hum. Hered.* **19**, 159.
- WEITKAMP, L. R., RENWICK, J. H., BERGER, J., SHREFFLER, D. C., DRACHMANN, O., WUHRMANN, F., BRAEND, M. & FRANGLIN, G. (1970). Additional data and summary for albumin-Gc linkage in man. *Hum. Hered.* **20**, 1.
- WEITKAMP, L. R. & NEEL, J. V. (1972). The genetic structure of a tribal population, the Yanomama Indians. IV. Eleven erythrocyte enzymes and summary of protein variants. *Ann. Hum. Genet.* **35** (in the press).
- WINTER, W. P. & RUCKNAGEL, D. L. (1971). Amino acid sequence studies on an inherited human serum albumin variant. *Fedn Proc.* **30**, 1295.