

# Functional apparent moduli as predictors of oral implant osseointegration dynamics

Po-Chun Chang,<sup>1,2,3</sup> Yang-Jo Seol,<sup>1,3</sup> Noboru Kikuchi,<sup>4</sup> Steven A. Goldstein,<sup>2,5</sup>  
William V. Giannobile<sup>1,2,6</sup>

<sup>1</sup>Department of Periodontics and Oral Medicine, School of Dentistry, University of Michigan, Ann Arbor, Michigan 48109

<sup>2</sup>Department of Biomedical Engineering, College of Engineering, University of Michigan, Ann Arbor, Michigan 48109

<sup>3</sup>Department of Preventive Dentistry, Faculty of Dentistry, National University of Singapore, Singapore 119083

<sup>4</sup>Department of Mechanical Engineering, College of Engineering, University of Michigan, Ann Arbor, Michigan 48109

<sup>5</sup>Department of Orthopaedic Surgery, School of Medicine, University of Michigan, Ann Arbor, Michigan 48109

<sup>6</sup>Michigan Center for Oral Health Research, University of Michigan School of Dentistry, Ann Arbor, Michigan 48109

Received 16 August 2009; revised 29 December 2009; accepted 20 January 2010

Published online 6 April 2010 in Wiley InterScience (www.interscience.wiley.com). DOI: 10.1002/jbm.b.31631

**Abstract:** At present, limited functional data exists regarding the application and use of biomechanical and imaging technologies for oral implant osseointegration assessment. The objective of this investigation was to determine the functional apparent moduli (FAMs) that could predict the dynamics of oral implant osseointegration. Using an *in vivo* dental implant osseous healing model, two FAMs, functional bone apparent modulus (FBAM), and composite tissue apparent modulus (FCAM), of the selected peri-implant structures were calculated via microcomputed tomography (micro-CT) and finite element (FE) simulations in order to support this concept. Results showed significant sensitivity between FAMs and micro-CT parameters, especially between bone mineral density and FBAM, while at extraction defect sites the strongest correlations existed between bone-implant

contact and FCAM. Significant enhancement of FCAM indicated progressive functional repair during early osseointegration. Further, the resultant interfacial resistance was predicted by bone mineral content (BMC) and FBAM within a  $\sim 200$   $\mu\text{m}$  peri-implant thickness, while the extraction defects gave zones of  $\sim 575$   $\mu\text{m}$  and  $200$   $\mu\text{m}$  for BMC and FCAM, respectively. These results suggest that the function of dental implant support can be predicted from a peri-implant structural zone. We conclude that FAMs can be used to predict the dynamics of dental implant osseointegration *in vivo*. © 2010 Wiley Periodicals, Inc. *J Biomed Mater Res Part B: Appl Biomater* 94B:118–126, 2010.

**Key Words:** dental implant, osseointegration, micro-computed tomography, finite element analysis

## INTRODUCTION

Dental implants have been a widely accepted alternative for tooth replacement, and the process of osseointegration has been extensively studied in preclinical and clinical investigations, with most of the information being derived from radiographic, histologic, and biomechanical analyses.<sup>1–4</sup> As such, an uncertain relationship between the peri-implant structure and implant biomechanics creates challenges when evaluating the functional dynamics of dentoalveolar tissues during healing.<sup>5,6</sup> This discrepancy might originate from the imprecision of the methodology as well as the information provided from the two-dimensional images.<sup>3,7</sup> Micro-computed tomography (micro-CT) offers a comprehensive three-dimensional (3D) information of the dentoalveolar structures<sup>8</sup>; however, the potential physical artifacts due to the approach may still limit the application for dental implants.<sup>9,10</sup>

Finite element (FE) analysis has previously been utilized to study the mechanical behavior of dental implants and bone tissues.<sup>11–13</sup> However, the bone-implant interface has

been considered as the boundary condition in FE models such that evaluating the *in vivo* process and progress of osseointegration via FE analysis alone has not been feasible.<sup>14</sup> Therefore, denser peri-implant structures and higher bone-implant contact surfaces tend to offer stronger contact stiffness.<sup>15,16,32</sup> On the other hand, to eliminate the heterogeneity of bone tissues and simplify the iteration process, previous investigations on homogenizing the bone through FE optimization reported significant agreement between “effective stiffness” and experimental results.<sup>17–19</sup> Thus, functional homogenization of peri-implant supporting tissue may be feasible to demonstrate the biomechanical dynamics of peri-implant supporting structures.

The primary aim of this study was to determine functional apparent moduli (FAMs) representing implant tissue-supporting biomechanical properties during osseointegration and bone regeneration. The interfacial stiffness (IS) between the peri-implant bone and implant was recorded during implant push-out, and FE analyses were performed

Additional Supporting Information may be found in the online version of this article.

**Correspondence to:** W. V. Giannobile; e-mail: william.giannobile@umich.edu

Contract grant sponsors: AO Foundation Biotechnology Advisory Council; NIH/NIDCR DE 13397; the ITI Foundation

**TABLE I. Study Design**

	Osteotomy-alone (OA)	Osteotomy + osseous defect (OS)
Day 7*	4	N.D.
Day 10	6 (0)	6 (0)
Day 14	6 (2)	6 (0)
Day 21	4 (4)	6 (6)

\* OS group was unavailable on day 7 due to no mineralization could be found from our preliminary study. One of the specimens in OA group without any significant bone destruction and microscopic fracture on day 7 was selected as the representative FE model for evaluating the radiographically detectable deformation.

Numbers in the table indicates specimens evaluated in each time point. Parentheses refer to the specimens unavailable for micro-CT examinations due to significant specimen fracture after implant push-out.

N.D. = not determined.

to demonstrate that micro-CT was capable of providing precise 3D information of peri-implant structure after implant removal. Based on micro-CT images during osseointegration, FEMs were generated to homogenize the peri-implant structure through FE optimization, and the correlations between IS and peri-implant structure were evaluated to verify the functionally relevant peri-implant layer. Our results demonstrate that FEMs were capable of measuring dynamic functional change during early-stage implant osseointegration, and implant biomechanics can be predicted from a specific dimension of the functionally relevant peri-implant layer.

## MATERIALS AND METHODS

### Study materials and animal model

All animal surgical procedures followed the guidelines according to the Committee on Use and Care of Animals (UCUCA) at the University of Michigan. A modified small animal dental implant model was utilized in this study with a total of 38 adult Sprague-Dawley rats (Table I,  $n = 4-6$  animals/time-point/group).<sup>20</sup> All the animals were anesthetized by intraperitoneal administration of ketamine and xylazine with subcutaneous administration of buprenex for analgesia. The maxillary first molars were extracted atraumatically and the alveolar ridges were allowed to heal for 30 days. To enable implant placement, a 0.95 mm diameter  $\times$  2 mm in length (reaching the maxillary sinus floor) osteotomy was created for the press-fit installation of a 1 mm  $\times$  2 mm cylindrical implant with SLActive<sup>®</sup> surface treatment (Institut Straumann AG, Basel, Switzerland). The control group constituted the osteotomy-alone defects [OA; Figure 1(a)]. The test group consisted of the creation of a simulated extraction socket defect at the coronal portion of the osteotomy with dimensions as shown in Figure 1(b) [osteotomy + osseous defect group (OS)]. After defect creation and implant placement, the intraoral wounds were closed by tissue glue (Periacyrl<sup>®</sup>, Glustitch Inc., Point Roberts, WA).

### Bone-implant interfacial stiffness determination

Block biopsies from animals in the OA and OS groups were harvested at 7, 10, 14, or 21 days post-implant installation (Table I) and secured in acrylic resin. The implants were

pushed out of the maxillae using an MTS machine (Model 858, Mini-Bionix II, MTS Systems Corp., Eden Prairie, MN) at a constant displacement rate of 0.1 mm/s [Supporting Information Figure S1(a)]. Maximal removing load (MRL) and interfacial stiffness (IS) were calculated from the load-displacement curves [Supporting Information Figure S1(b)]. An osseointegration index (OI) score was also determined after implant push-out (Table II). The definitions of the biomechanical parameters are referred to in Appendix A.

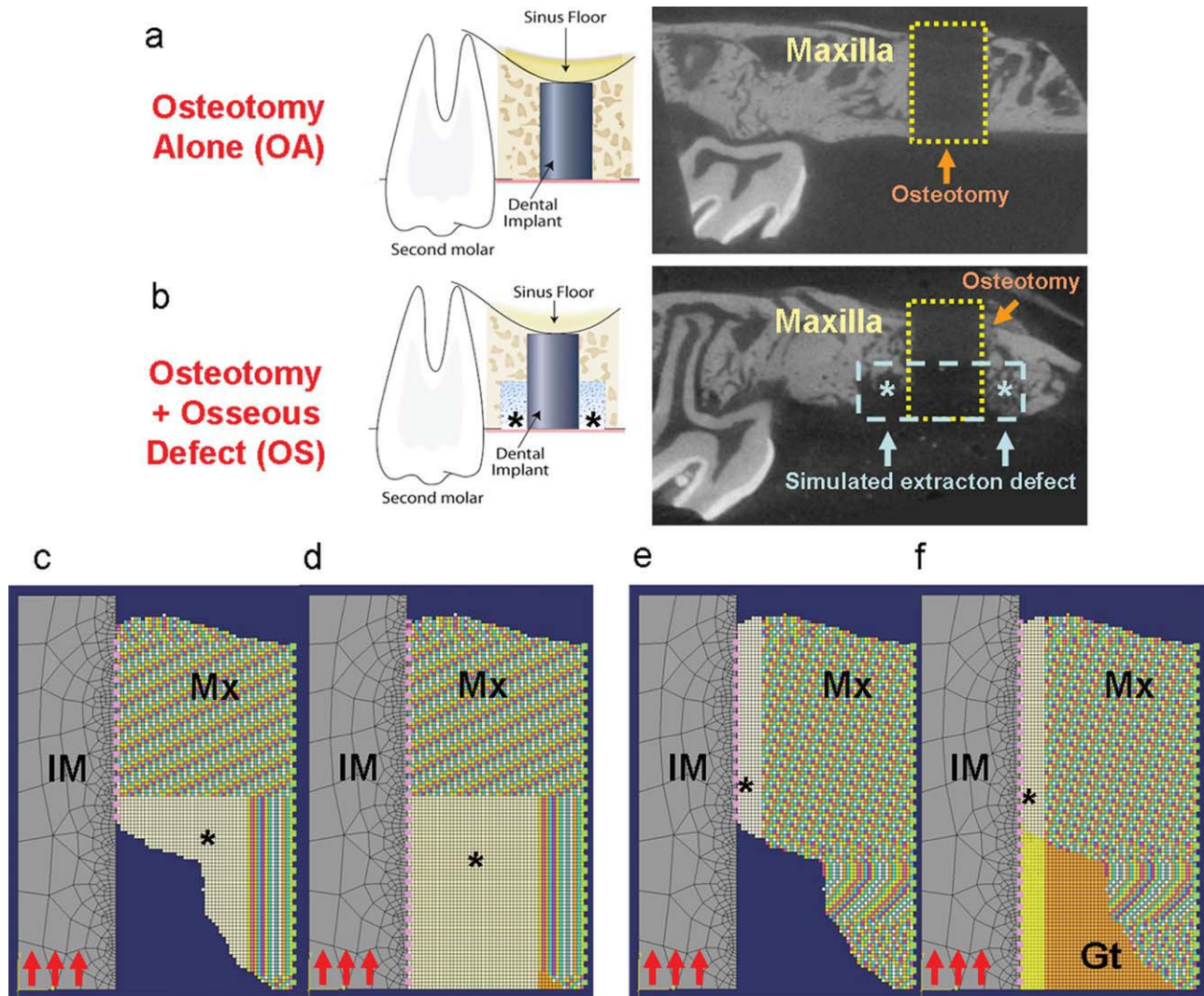
### Micro-CT applications for peri-implant structures

Our preliminary study demonstrated a 120–150  $\mu\text{m}$  zone on the CT phantom (Inner bone, Gammex Inc., Middletown, WI) surrounding the border of the implant due to the metal scattering effect (Supporting Information Figure S2) which limited the evaluation of the implant-supporting tissues,<sup>9,25,26</sup> and this artifact may be eliminated after implant removal. Subsequently, the implant removal procedure could damage the peri-implant structure, but the comparison before and after the implant removal could not be evaluated directly from the experiments. Thus, we designed an *in vivo* FE model to evaluate potentially CT-detectable tissue damage after implant push-out.

Our FE model was developed to simulate the implant push-out procedure using linear static analysis with ABAQUS<sup>™</sup> v6.7-1 software (Simulia Inc., Northville MI) based on micro-CT images from a representative *in vivo* specimen, and a 3D image was homogenized to a plane and the axisymmetric model was established. Quadratic linear-isotropic elements were utilized to reconstruct the peri-implant bone, and the resultant properties were assigned by conversion of the mineral density data from micro-CT images.<sup>21–24,35,36</sup> Cohesive elements were utilized to simulate the proteoglycan-rich zone of the bone-implant interface. Detailed model settings and assumptions are referenced in Appendix B. To investigate the influence of bone-implant contact (BIC), a 0.6  $\times$  1 mm circumferential peri-implant osseous defect was assumed,<sup>33,34</sup> and based on observations from preliminary studies, several elements were removed to achieve 20% BIC (equivalent to wound healing at day 10) and 50% BIC (equivalent to day 14) models (Figure 2). Then, the IS of cohesive elements was assigned by conversion of the measurements from micro-CT after implant push-out (section 2.2), in which “minimal” represented IS for day 7, “moderate” for day 10, “strong” for day 14, and “maximal” for day 21. The maximum principal strain was recorded after push-out. The visible deformation under micro-CT was set as 2.5% strain level,<sup>27</sup> and elements exceeding this threshold were colorized by gray.

### *In vivo* measurements

Micro-CT images were acquired (eXplore Locus SP, GE HealthCare) following implant removal [Figure 1(a,b), right panel] at an operating voltage of 80kV and reconstructed into voxels of 18  $\times$  18  $\times$  18  $\mu\text{m}^3$ , and then segmented with a threshold determined by an adaptive technique.<sup>28</sup> BIC, bone volume fraction (BVF), tissue mineral density (TMD), and bone mineral density (BMD) were each evaluated to investigate the osseous wound healing within the osseous



**FIGURE 1.** *In vivo* dental implant osseointegration model for functional simulations. The surgical model of osteotomy-alone and osseous-defect group are demonstrated in the left panels of (a, b). The right panels demonstrate a slice of micro-CT image from a 10-day specimen after implant removal (the  $1 \times 2 \text{ mm}^2$  area of osteotomy is marked by the yellow dashed line; the  $0.6 \times 1 \text{ mm}^2$  area of simulated extraction defect is marked by blue dash line and asterisks). The optimized FE models are shown on (c) FBAM and (d) FCAM for evaluation of osseous wound repair, (e) FBAM and (f) FCAM of interfacial tissue for evaluating the correlation to interfacial biomechanics. Suspended boundary (dash lines in light green) was assumed, and the bone-implant interface (dash lines in pink) was assumed homogenous and simulated using cohesive elements. In each model, the Young's modulus of the mineralized tissue (Mx) was projected from the grayscale of micro-CT images, whereas the dental implant (IM) and granulation tissue (Gt) was obtained from a reference standard.<sup>21–24,33–36</sup> The Young's modulus of the bone or tissue in the area of interest (asterisk) was calculated from the functional loading from the oral cavity (red arrows). The elasticity of interface was assumed equivalent to the peri-implant element nearby. Osteotomy-alone (OA) and osteotomy with osseous defect (OS) specimens were examined for each simulation ( $n = 12\text{--}14$  for each group). FE, finite element; FBAM, functional bone apparent modulus; FCAM, functional composite tissue apparent modulus.

defect areas. The equivalent osseous defect areas were also segmented for the control group and they served as the reference for complete osseointegration.

To determine the correlation between interfacial resistance and the properties of concentric area, the peri-implant tissue was concentrically segmented in  $18 \mu\text{m}$  intervals ranging from  $18\text{--}720 \mu\text{m}$  and bone volume (BV), BMC, and BMD (Appendix A) from individual and cumulative peri-implant tissue layers from the bone-implant interface were calculated. The definition of all above abbreviated terms are referenced in Appendix A.

#### Functional homogenization through FE optimization

FBAM and FCAM were generated (for definitions refer to Appendix A) for all available specimens from both OS and OA groups (Table I). Micro-CT of the *in vivo* images was homogenized to establish axisymmetric FE models [Figure 1(c-f)]. Two models were generated for each specimen: the “microscopic” model which contained local mechanical properties from micro-CT, and the “optimizing” model, with the property within a specific area assumed homogenous and generated from FE optimization by applying a pre-yield load on the implant top surface (Appendix C). Correlations between

**TABLE II. Index of Osseointegration**

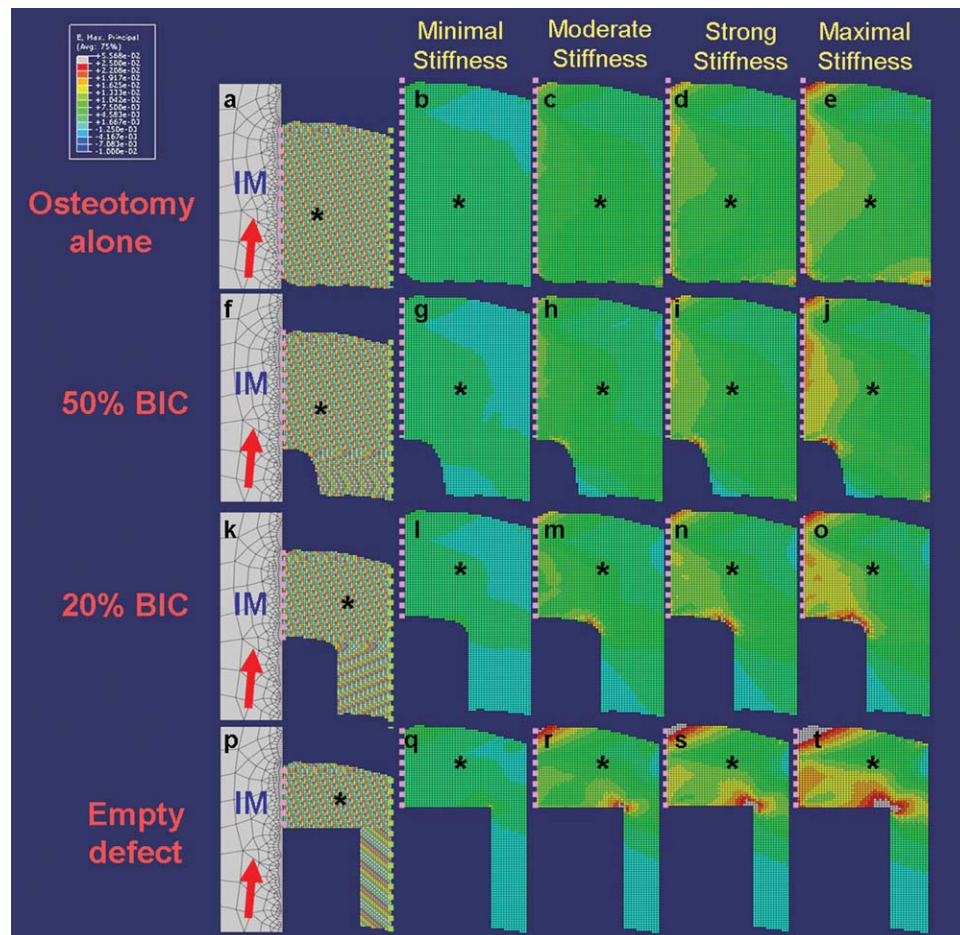
Grade	Definition
0	Minimal contact. Interfacial stiffness < the value of day 7 OA specimens.
1	Moderate contact. Interfacial stiffness > the value of day 7 OA specimens; no visible trabecular/cortical bone fracture.
2	Trabecular bone fracture. No visible fracture or component loss on micro-CT, with macroscopically visible residual bone on the implant surface.
3	Mild cortical bone fracture. Fracture line on cortical bone detected on micro-CT; no significant bone component separation.
4	Major cortical bone fracture. Separation of the bone components.

OA, osteotomy-alone defects.

functional apparent moduli and either mathematical moduli (MBM & MCM, mathematically averaged of Young's moduli within osseous defect, Appendix A) or micro-CT structural parameters (BIC, BVF, BMD, TMD) were examined to study the correspondence between radiographic and functional information from the osseous defect sites. FBAM and FCAM of the cumulative peri-implant concentric area [Figure 1(e,f)] were also correlated to IS and MRL to investigate the functionally relevant peri-implant layer.

### Statistical analysis

All the correlation analyses were performed using a Pearson Product Moment correlation test. Differences between the biomechanical, structural, and functionally-simulated parameters over time and between the OA and OS group were



**FIGURE 2.** Finite element model and maximum principle strain distribution of implant-supporting tissues after implant removal. Four axisymmetric models were generated to evaluate the effects of osseous wound repair over time (a, f, k, p). The maximum principle strain of the peri-implant tissue on the compression side (asterisks, and bone-implant interface referred to the dash line) after implant (IM) removal with 5° angulations (red arrows on a, f, k, p) was recorded (b-e, g-j, l-o, q-t). The osseous defect was set as 0.6 mm-in-width and 1.0 mm-in-depth surrounding the dental implant (d), 20% bone-implant-contact (BIC) referred to normal healing wound at day 10 (k), 50% BIC referred to normal healing wound at day 14 (f), and osteotomy-only referred to no defect creating specimens (a). Suspended boundary (dash lines in light green on a, f, k, p) was assumed, and the bone-implant interface (dash lines in pink) was assumed homogenous and simulated using cohesive elements. Four different interfacial bonding situations were assigned for evaluations, whereas minimal, moderate, strong, and maximal stiffness was assigned according to the record from push out testing on the osteotomy-only group at days 7, 10, 14, and 21 (referred to Table II). The elements with radiographically visible deformation (experienced more than 2.5% strain) were colored by gray. The profile of minimal principle strain demonstrated a similar tendency, and fewer elements demonstrated radiographic deformation.

**TABLE III. Dynamic Change of Biomechanical, Structural, and Functional Parameters Over Time**

	Osteotomy-alone (OA)				Osteotomy + osseous defect (OS)		
	Day 7 (n = 4)	Day 10 (n = 6)	Day 14 (n = 6)	Day 21 (n = 4)	Day 10 (n = 6)	Day 14 (n = 6)	Day 21 (n = 6)
Interfacial stiffness (N/mm)	67.66 (42.57)	180.54 (30.79) <sup>#</sup>	229.16 (34.82) <sup>#</sup>	290.10 (57.97) <sup>§,#</sup>	28.82 (25.79)*	77.74 (45.90)*	161.67 (100.96) <sup>§</sup>
Osseointegration index score	0.50	1.17	2.50 <sup>#</sup>	4.00 <sup>§,#</sup>	0.17*	0.83*	3.33 <sup>§</sup>
Maximal removal load (N)	2.52 (1.69)	28.88 (7.93) <sup>#</sup>	44.65 (10.02) <sup>#</sup>	N.D.	5.29 (5.99)*	15.46 (7.09)*	N.D.
Bone-implant contact (mm <sup>2</sup> )	0.95 (0.33)	1.13 (0.21)	1.04 (0.12)	N.D.	0.30 (0.15)*	0.44 (0.21)*	N.D.
Bone volume fraction	0.72 (0.04)	0.74 (0.13)	0.77 (0.06)	N.D.	0.43 (0.15)*	0.57 (0.07)*	N.D.
Tissue mineral density (mg/cc)	667.35 (63.37)	801.74 (94.12)	823.82 (80.07) <sup>#</sup>	N.D.	311.28 (80.40)*	383.40 (102.56)*	N.D.
Bone mineral density (mg/cc)	804.58 (39.2)	1078.69 (196.32) <sup>#</sup>	1078.09 (120.03) <sup>#</sup>	N.D.	583.71 (55.82)*	668.32 (119.09)*	N.D.
MCM (GPa)	N.D.	3.362 (0.511)	3.687 (0.107)	N.D.	1.071 (0.125)*	1.506 (0.202)*	N.D.
FCAM (GPa)	N.D.	13.031 (1.807)	12.430 (2.965)	N.D.	3.801 (0.356)*	7.939 (1.318)*, <sup>§</sup>	N.D.
MBM (GPa)	N.D.	11.889 (0.922)	12.176 (1.692)	N.D.	7.687 (0.348)*	7.993 (0.507)*	N.D.
FBAM (GPa)	N.D.	11.979 (1.670)	12.312 (2.775)	N.D.	7.752 (0.258)*	8.745 (0.662)*	N.D.

\* Significant difference to osteotomy-alone group at specific time points ( $p < 0.001$ ).

§ Significant difference to day 10 ( $p < 0.01$ ).

# Significant difference to day 7 ( $p < 0.01$ ).

Parentheses refers to standard deviation. N.D., not determinable; MCM, mathematical composite tissue modulus; FCAM, functional composite tissue apparent modulus; MBM, mathematical bone modulus; FBAM, functional bone apparent modulus.

determined by paired t tests for continuous data, and by Mann-Whitney U tests for discontinuous data. A  $p$  value of  $<0.05$  was considered as statistically significant.

## RESULTS

### Promotion of interfacial biomechanics during dental implant osseointegration

Overall results showed the interfacial stiffness significantly ( $p < 0.01$ ) increased from day 7 through day 10 then gradually leveled off by day 21. MRL and the mean OI score also demonstrated similar tendencies as IS, and most of the specimens at day 21 revealed visible cortical bone fracture (4 of 6 in OS group, and 6 of 6 in OA group). While osseointegration refers to the maximal bone-implant bonding capability, this situation indicated complete osseointegration occurred (Table III).

### Interfacial damage is not a significant factor following implant removal during early healing

In our FE model for interfacial damage, no significant difference in strain distribution was noted among 0°, 3°, and 5° angulated loads, and the maximum principal strain occurred at a 5° angulated load, with the compression side illustrated in Figure 2. Results revealed that the strain increased with elevations in interfacial stiffness, and greater defect fill led to more favorable strain distribution from fracturing. Although radiographically visible deformation of tissues

was noted in several analyses (Supporting Information Table S1), those situations only occurred while the interfacial bonding was stiffer than the stiffness from our experiment in the non-defect condition at the relevant time points. The results of our FE analyses confirmed that implant removal did not lead to radiographically detectable deformation.

### Correlations between functional apparent moduli and mathematical moduli or structural parameters during early healing

Within 14 days, both FBAM and FCAM were correlated to mathematical moduli for the OS and OA groups. Both FBAM and FCAM were more highly correlated to the micro-CT structural parameters (BIC, BVF, TMD, BMD) than mathematical bone and composite tissue modulus, especially to BMD in the OA group as well as to BIC in the OS group. Furthermore, FCAM demonstrated more correlation to all other structural parameters in the OS defects when compared to FBAM or both mathematical moduli (Table IV).

### Biomechanical testing, micro-CT imaging, and FAMs of peri-implant wound repair

In the OS group, progressive increases for all of the biomechanical and structural parameters were noted (Table III), and significant fracture of cortical bone after push-out testing on day-21 made the specimens unavailable for micro-CT structural evaluation (Table I). However, those biomechanical

**TABLE IV. Correlations Between Micro-CT and Functional/Mathematical Modulus**

Parameters	Osteotomy-Alone (OA, <i>n</i> = 14)		Osteotomy + osseous defect (OS, <i>n</i> = 12)	
	FBAM	FCAM	FBAM	FCAM
Functional/mathematical modulus				
R square	0.8925	0.2780	0.5856	0.6762
P value	N.S.	<0.0001	<0.0001	<0.0001
R square to functional apparent modulus*				
Bone-implant contact (BIC)	0.2755	0.2964	0.4243	0.7589
Bone volume fractions (BVF)	0.0869	0.0352	0.0057	0.4857
Tissue mineral density (TMD)	0.1203	0.0566	0.1113	0.4651
Bone mineral density (BMD)	0.8544	0.7364	0.3298	0.3708
R square to mathematical modulus*				
Bone-implant contact (BIC)	0.0604	0.4140	0.1135	0.6204
Bone volume fractions (BVF)	0.1546	0.7168	0.0132	0.4062
Tissue mineral density (TMD)	0.3476	0.6458	0.1231	0.4081
Bone mineral density (BMD)	0.5003	0.1641	0.4937	0.0080

\* All the *p* value between micro-CT and functional/mathematical modulus were <0.05.

FBAM, functional bone apparent modulus; FCAM, functional composite tissue apparent modulus.

and structural parameters were still significantly lower ( $p < 0.05$ ) compared with the OA group at day 10–14 (Table III).

Among all the mathematical and functional apparent moduli, FCAM was the only one that demonstrated a significant difference over time in the OS group ( $p < 0.01$ ). There was a two-fold difference between FBAM and FCAM at day 10 but after accounting for an equivalent value at day 14 implied that the composite tissue in the osseous defect was able to offer equivalent functional support as the bone structure. However, FBAM changed dynamically in the OS group and continued to display significant differences from the OA group at day 14 ( $p < 0.001$ ), which also indicated that the functional resistance from the neogenic bone structure was still not as strong as the mature mineralized structures.

#### Correlations between interfacial resistance and micro-CT parameters/FAMs

In the OA group, BV and BMC from the innermost layer of the peri-implant area demonstrated the highest correlation to both IS and MRL when compared with all other concentric layers [Figure 3(a,d)]. Using cumulative layer analysis, BMC better predicted IS at the 180  $\mu\text{m}$ -thickness peri-implant layer [ $R = 0.70$ , Figure 3(b)]. Although the micro-CT parameters and MRL were less correlated, BMD remained a better predictor of MRL at a 180  $\mu\text{m}$ -thickness layer [ $R = 0.501$ , Figure 3(e)]. In the OS group, BV exhibited a very weak correlation for both IS and MRL ( $R < 0.2$ ) in layer-by-layer analysis (Figure 3(g,i)). In the cumulative layer analysis, BMC displayed the highest correlation to both IS ( $R = 0.66$ ) and MRL ( $R = 0.71$ ) at the 576  $\mu\text{m}$ -thickness level [Figure 3(h,k)]. Those results implied that the tissue-implant interfacial biomechanics might be predicted from micro-CT imaging within 180  $\mu\text{m}$  thickness peri-implant layer without any pre-existing osseous defect as well as 576  $\mu\text{m}$  thickness with a 600  $\mu\text{m}$  pre-existing defect.

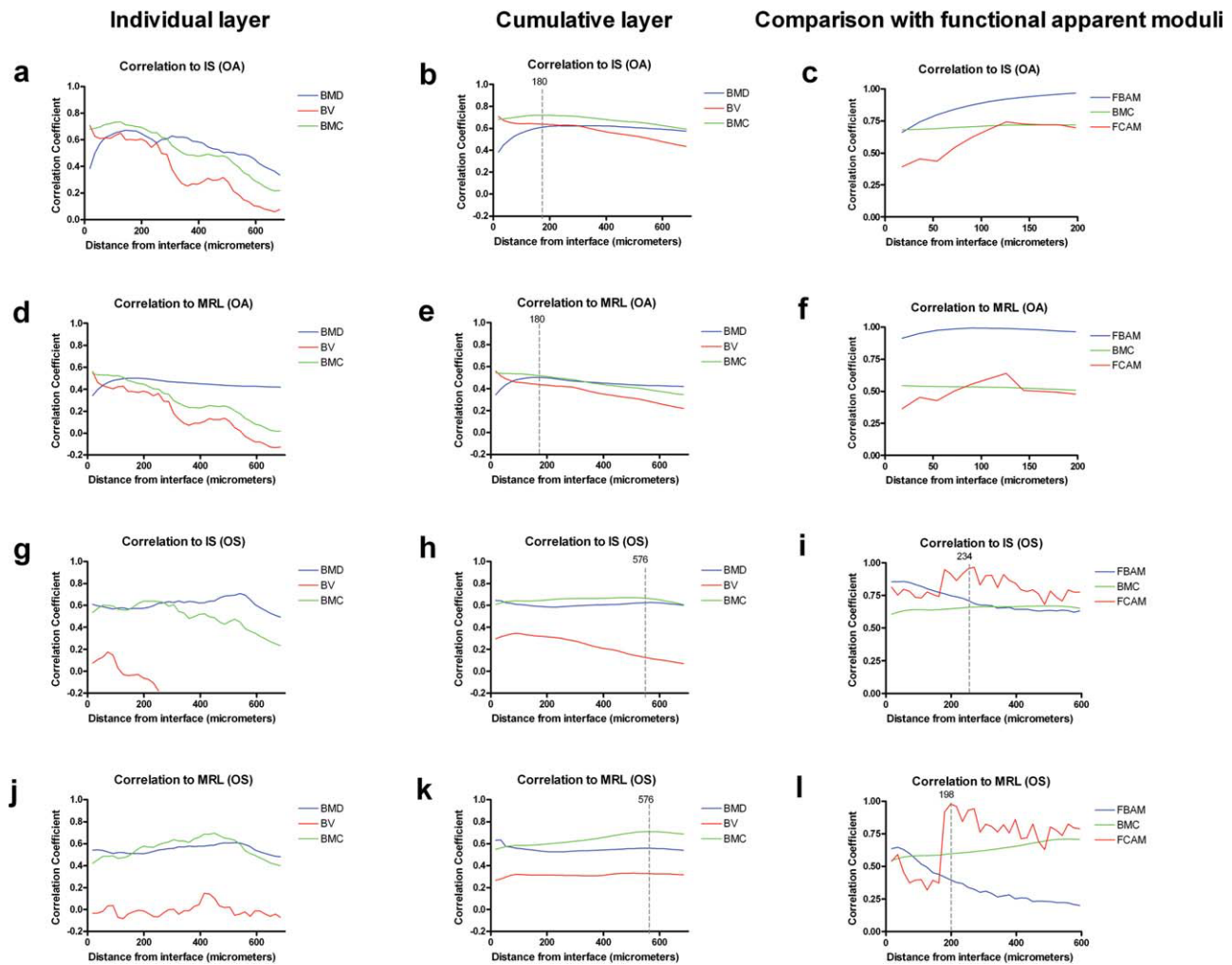
Further examination of the FAMs within 200  $\mu\text{m}$ -thickness peri-implant tissue in the OA group and 600  $\mu\text{m}$ -thickness in the OS group demonstrated the highest correlation

of FBAM to both biomechanical parameters in the OA group in the 180  $\mu\text{m}$  concentric layer [ $R > 0.8$ , Figure 3(c,f)] as well as FCAM in OS group from around 200  $\mu\text{m}$ -thickness [Figure 3(i,j)]. Thus, the functionally relevant peri-implant layer reduced to 200  $\mu\text{m}$  thickness in the situation with and without a pre-existing defect as determined from the FAMs evaluations.

#### DISCUSSION

Although modern biomechanical assessments such as nano-indentation or scanning acoustic microscopy may provide microscopic mapping of the mechanical properties of bone,<sup>29,30</sup> the properties at the implant interface still cannot be directly measured. Thus, in this study we generated functional apparent moduli (FAMs) by simulating the implant loading situation and extrapolation via FE modeling to match the microscopic data. This approach may be more clinically relevant and feasible as a methodology to assess the functional capability of the peri-implant tissue during osseointegration. As this approach is based on simplified assumptions of the axis-symmetric model, we also ran a 3D finite element model and have determined that it demonstrates a similar distribution of strain as the axis-symmetric model although is much less practical (data not shown, Supporting Information Figures S3 and S4). We demonstrate that FAMs, both FBAM and FCAM, are correlated to mathematical moduli. FBAM is capable of expressing the biomechanical performance in the traditional osteotomy defects, while FCAM can better interpret the functional dynamics in the peri-implant defect situation. While physical artifacts surrounding the titanium implant do not reflect a reliable bone-implant interfacial relationship (Supporting Information Figure S2), we also demonstrated that meticulous removal of the implant did not result in significant radiographically detectable deformation through FE analyses (Figure 2).

Significant enhancement of the interfacial biomechanics and structural parameters from days 7 to 10 were later accompanied by a progressive increase in the OA group



**FIGURE 3.** Relationship between interfacial resistance and micro-CT/functional parameters. Correlation coefficient of interfacial resistance (IS and MRL) and micro-CT parameters (BMD, BV, BMC) was evaluated by 18  $\mu\text{m}$  thick individual concentric peri-implant tissue layer (a, d, g, j) and cumulative layer (b, e, h, k) in osteotomy-alone (OA) and osteotomy + osseous defect (OS) groups. While stronger correlation between micro-CT parameters and interfacial resistance was noted in the 180  $\mu\text{m}$  thickness peri-implant region of OA group (b, e), and 576  $\mu\text{m}$  in the OS group (h, k), further calculation of correlation coefficient of functional parameters (FBAM and FCAM) and interfacial resistance (IS and MRL) was performed within 200  $\mu\text{m}$  concentric peri-implant area in the OA group (c, f), and 600  $\mu\text{m}$  area in the OS group (i, l). IS, interfacial stiffness; MRL, maximal removal load; BMD, bone mineral density; BV, bone volume; BMC, bone mineral content; FBAM, functional bone apparent modulus; FCAM, functional composite tissue apparent modulus.

(Table III), which could be explained histologically from the report of Franchi et al.<sup>31</sup> They demonstrated that bone trabeculae quickly invade the initial gap at the bone-implant interface and mature into a three-dimensional spongiosa to offer greater resistance for early implant stability. Therefore, correlations between FAMs and the structural parameters indicate that the function of tissues does not solely depend on any single parameter. FBAM relates to the extent of bone maturation, and FCAM signifies the composite tissue rigidity toward the implant. In the OS group, significant differences of FAMs and mathematical moduli at both day 10 and 14 indicated that healing was still so immature that could not offer as strong of a functional support as the OA specimens (Table III). However, this significant difference between 10 and 14 days for FCAM in the OS group indicates rapid bone apposition towards the implant surface during osseous

wound repair. While bone is the rigidity-dominant tissue within the defect, by 14 days FCAM reached an equivalent value as FBAM in the OS group (Table III) implying that although the defect was not completely filled by bone, the composite tissue could offer equivalent function as the neogenic bone. This finding suggests that the main response within the osseous defect was rapid expansion of mineralized tissue thus providing greater support of the dental implant during the early stage of osseointegration. Consistent with these findings, several of our later-stage (mostly day-21) specimens experienced cortical bone fracture during the implant push-out, due to high interfacial bonding of mature osseointegration resulting in trabecular structure failure prior to the interfacial failure.

Implant stability is clearly one of the critical factors for evaluating implant success and for determining the timing

for loading or abutment connection.<sup>4</sup> However, a poor understanding of the relationship between structural parameters and implant stability and the subsequent range of peri-implant tissue properties can lead to a discrepancy between the peri-implant structure and implant functions.<sup>5,6,32</sup> From our study, stronger correlations of the functional apparent moduli to interfacial resistance imply that integration of the peri-implant structural information is necessary to predict the functional performance of the implant system. The functionally relevant peri-implant layer was also identified as 180  $\mu\text{m}$  in the OA situation, and around 200  $\mu\text{m}$  in the OS situation. We interpret these findings to mean that integration of the 3D peri-implant structure within a range of a 200  $\mu\text{m}$  concentric layer is capable of predicting the tissue-implant interfacial biomechanics.

These results lead us to conclude that micro-CT imaging can be used to provide 3D information of implant-supporting tissues following cylinder-type implant removal, and both micro-CT imaging together with FAMS are capable of predicting the functional dynamics of implant-supporting osseous tissues and the interfacial biomechanics during osseointegration. Utilization of these functional and imaging methodologies may provide key biomechanical information for progression of peri-implant wound healing and determination of timing of dental implant loading in human patients.

#### ACKNOWLEDGMENTS

The authors kindly thank Jeff Meganck, Dennis Kayner, Lea Franco, Gaia Rosa Pellegrini, Valeria Pontelli Navarro Tedeschi, Chia-Yuan Chang and Heesuk Kang for their assistance with this investigation.

#### REFERENCES

- Futami T, Fujii N, Ohnishi H, Taguchi N, Kusakari H, Ohshima H, Maeda T. Tissue response to titanium implants in the rat maxilla: Ultrastructural and histochemical observations of the bone-titanium interface. *J Periodontol* 2000;71:287–298.
- Wikesjo UM, Susin C, Qahash M, Polimeni G, Leknes KN, Shanaman RH, Prasad HS, Rohrer MD, Hall J. The critical-size supraalveolar peri-implant defect model: Characteristics and use. *J Clin Periodontol* 2006;33:846–854.
- Aparicio C, Lang NP, Rangert B. Validity and clinical significance of biomechanical testing of implant/bone interface. *Clin Oral Implants Res* 2006;17(Suppl 2):2–7.
- Atsumi M, Park SH, Wang HL. Methods used to assess implant stability: Current status. *Int J Oral Maxillofac Implants* 2007;22:743–754.
- Ramp LC, Jeffcoat RL. Dynamic behavior of implants as a measure of osseointegration. *Int J Oral Maxillofac Implants* 2001;16:637–645.
- Scarano A, Degidi M, Iezzi G, Petrone G, Piattelli A. Correlation between implant stability quotient and bone-implant contact: A retrospective histological and histomorphometrical study of seven titanium implants retrieved from humans. *Clin Implant Dent Relat Res* 2006;8:218–222.
- Gielkens PF, Schortinghuis J, de Jong JR, Huysmans MC, Leeuwen MB, Raghoobar GM, Boss RR, Stegenga B. A comparison of micro-CT, microradiography and histomorphometry in bone research. *Arch Oral Biol* 2008;53:558–566.
- Park CH, Abramson ZR, Taba M Jr, Jin Q, Chang J, Kreider JM, Goldstein SA, Giannobile WV. Three-dimensional micro-computed tomographic imaging of alveolar bone in experimental bone loss or repair. *J Periodontol* 2007;78:273–281.
- Schouten C, Meijer GJ, van den Beucken JJ, Spauwen PH, Jansen JA. The quantitative assessment of peri-implant bone responses using histomorphometry and micro-computed tomography. *Biomaterials* 2009;30:4539–4549.
- Stoppie N, Wevers M, Naert I. Feasibility of detecting trabecular bone around percutaneous titanium implants in rabbits by in vivo microfocus computed tomography. *J Microsc* 2007;228:55–61.
- Chevalier Y, Pahr D, Allmer H, Charlebois M, Zysset P. Validation of a voxel-based FE method for prediction of the uniaxial apparent modulus of human trabecular bone using macroscopic mechanical tests and nanoindentation. *J Biomech* 2007;40:3333–3340.
- Himmlova L, Dostalova T, Kacovsky A, Konvickova S. Influence of implant length and diameter on stress distribution: a finite element analysis. *J Prosthet Dent* 2004;91:20–25.
- Natali AN, Pavan PG, Ruggero AL. Analysis of bone-implant interaction phenomena by using a numerical approach. *Clin Oral Implants Res* 2006;17:67–74.
- Van Staden RC, Guan H, Loo YC. Application of the finite element method in dental implant research. *Comput Methods Biomech Biomed Eng* 2006;9:257–270.
- Butz F, Aita H, Wang CJ, Ogawa T. Harder and stiffer bone osseointegrated to roughened titanium. *J Dent Res* 2006;85:560–565.
- Sennerby L, Meredith N. Implant stability measurements using resonance frequency analysis: Biological and biomechanical aspects and clinical implications. *Periodontol* 2000 2008;47:51–66.
- Hollister SJ, Brennan JM, Kikuchi N. A homogenization sampling procedure for calculating trabecular bone effective stiffness and tissue level stress. *J Biomech* 1994;27:433–444.
- Morgan EF, Bayraktar HH, Yeh OC, Majumdar S, Burghardt A, Keaveny TM. Contribution of inter-site variations in architecture to trabecular bone apparent yield strains. *J Biomech* 2004;37:1413–1420.
- Renders GA, Mulder L, Langenbach GE, van Ruijven LJ, van Eijden TM. Biomechanical effect of mineral heterogeneity in trabecular bone. *J Biomech* 2008;41:2793–2798.
- Dunn CA, Jin Q, Taba M Jr, Franceschi RT, Bruce Rutherford R, Giannobile WV. BMP gene delivery for alveolar bone engineering at dental implant defects. *Mol Ther* 2005;11:294–299.
- Keller TS. Predicting the compressive mechanical behavior of bone. *J Biomech* 1994;27:1159–1168.
- Kelly DJ, Prendergast PJ. Prediction of the optimal mechanical properties for a scaffold used in osteochondral defect repair. *Tissue Eng* 2006;12:2509–2519.
- Koca OL, Eskitascioglu G, Usumez A. Three-dimensional finite-element analysis of functional stresses in different bone locations produced by implants placed in the maxillary posterior region of the sinus floor. *J Prosthet Dent* 2005;93:38–44.
- Ramasamy JG, Akkus O. Local variations in the micromechanical properties of mouse femur: The involvement of collagen fiber orientation and mineralization. *J Biomech* 2007;40:910–918.
- Barrett JF, Keat N. Artifacts in CT: Recognition and avoidance. *Radiographics* 2004;24:1679–1691.
- Stoppie N, van der Waerden JP, Jansen JA, Duyck J, Wevers M, Naert IE. Validation of microfocus computed tomography in the evaluation of bone implant specimens. *Clin Implant Dent Relat Res* 2005;7:87–94.
- Keaveny TM, Wachtel EF, Ford CM, Hayes WC. Differences between the tensile and compressive strengths of bovine tibial trabecular bone depend on modulus. *J Biomech* 1994;27:1137–1146.
- Otsu N. Threshold selection method from gray-level histograms. *IEEE Trans System Man Cybernetics* 1979;9:62–66.
- Bumrerraj S, Katz JL. Scanning acoustic microscopy study of human cortical and trabecular bone. *Ann Biomed Eng* 2001;29:1034–1042.
- Fan Z, Smith PA, Eckstein EC, Harris GF. Mechanical properties of OI type III bone tissue measured by nanoindentation. *J Biomed Mater Res A* 2006;79:71–77.
- Franchi M, Fini M, Martini D, Orsini E, Leonardi L, Ruggeri A, Giavaresi G, Ottani V. Biological fixation of endosseous implants. *Micron* 2005;36:665–671.



32. Molly L. Bone density and primary stability in implant therapy. *Clin Oral Implants Res* 2006;17(Suppl 2):124–135.
33. Dhert WJ, Verheyen CC, Braak LH, de Wijn JR, Klein CP, de Groot K, Rozing PM. A finite element analysis of the push-out test: Influence of test conditions. *J Biomed Mater Res* 1992;26:119–130.
34. Holmgren EP, Seckinger RJ, Kilgren LM, Mante F. Evaluating parameters of osseointegrated dental implants using finite element analysis—A two-dimensional comparative study examining the effects of implant diameter, implant shape, and load direction. *J Oral Implantol* 1998;24:80–88.
35. Niebur GL, Yuen JC, Hsia AC, Keaveny TM. Convergence behavior of high-resolution finite element models of trabecular bone. *J Biomech Eng* 1999;121:629–635.
36. Fu E, Hsieh YD, Mao TK, Shen EC. A histomorphological investigation of the effect of cyclosporin on trabecular bone of the rat condyle. *Arch Oral Biol* 2001;46:1105–1110.