

SOLSTICE: An Electronic Journal of Geography and Mathematics

Persistent URL:

<http://deepblue.lib.umich.edu/handle/2027.42/58219>



Deep Blue



IMaGe Home



Solstice Home



Institute of Mathematical Geography, All rights reserved in all formats.

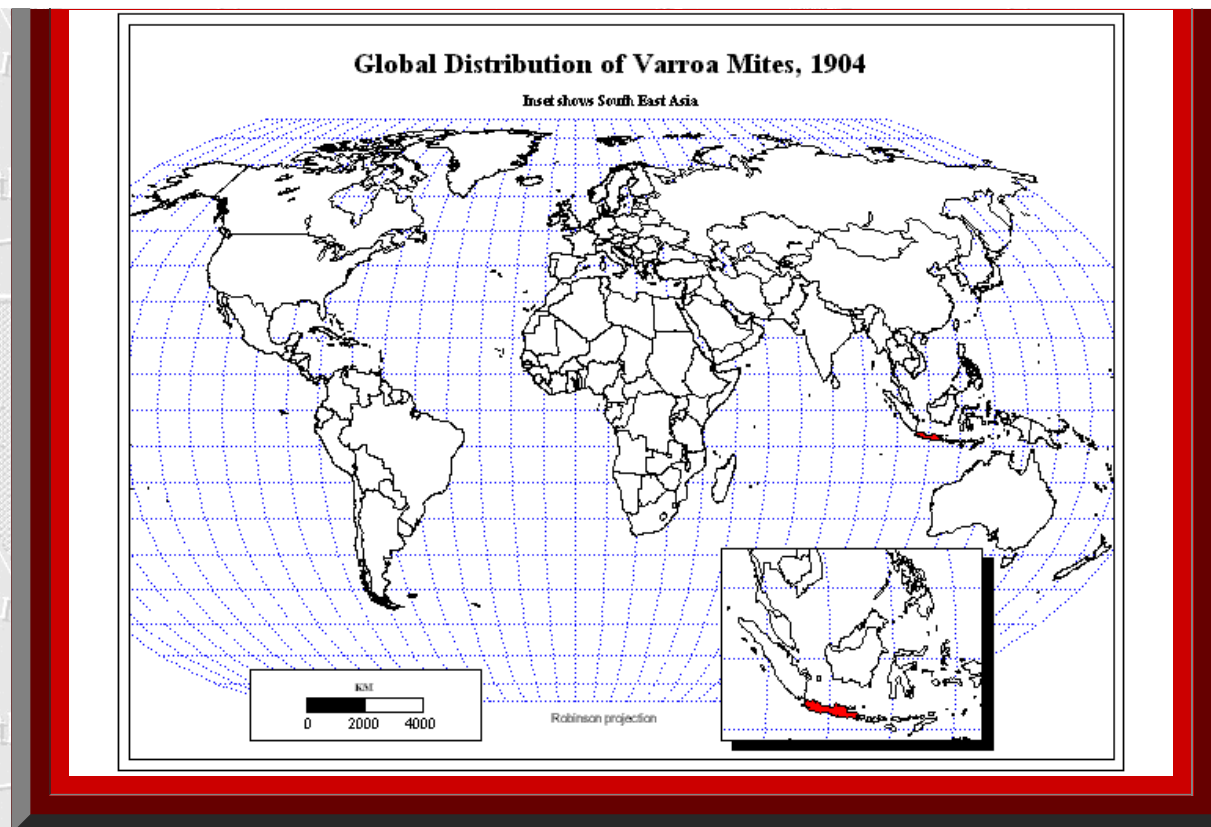
Works best with a high speed internet connection.

Final version of IMAge logo created by Allen K. Philbrick from original artwork from the Founder.

Update on Varroa Mite Spread

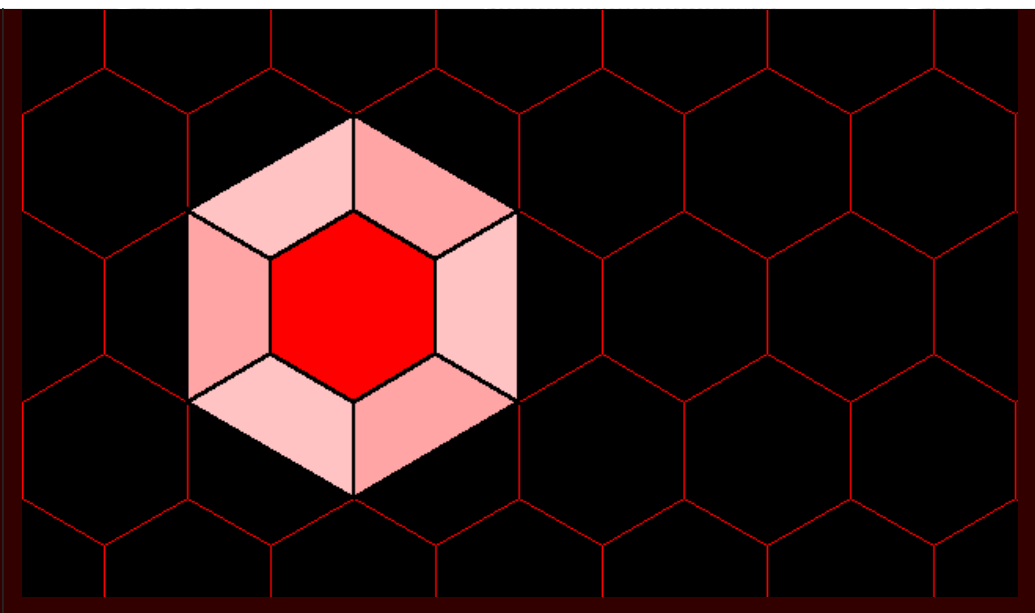
Diana Sammataro





- **Nigeria has been added to the list of impacted countries.** Akinwande, K.L. , Badejo, M.A., Ogbogu, S.S. Incidence of the Korean haplotype of Varroa destructor in southwest Nigeria (Short Survey) *Journal of Apicultural Research*, Volume 51, Issue 4, 1 October 2012, Pages 369-370.
 - **Hawaii, part of the Big Island and all of Oahu are now impacted.** Martin, S.J., Highfield, A.C., Brettell, L., Villalobos, E.M., Budge, G.E., Powell, M., Nikaido, S., Schroeder, D.C. 2012. Global honey bee viral landscape altered by a parasitic mite. *Science*. 336 (6086): 1304-1306 <http://www.sciencemag.org/content/336/6086/1304.abstract>
 - **Current work with the Swiss Bee Research Center is ongoing to map and update Varroa spread.**
- Stay tuned for more information and for updates of the animated Varroa mite mapping project.**





1. ARCHIVE

2. Editorial Board, Advice to Authors, Mission Statement

3. Awards

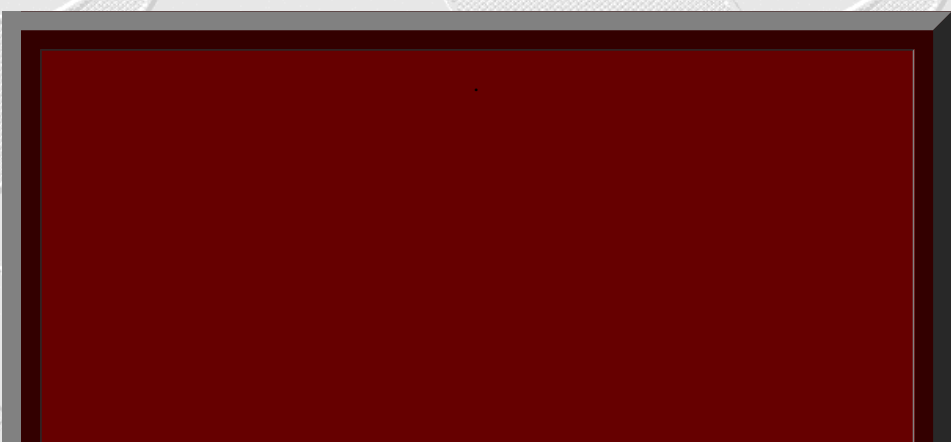
1.



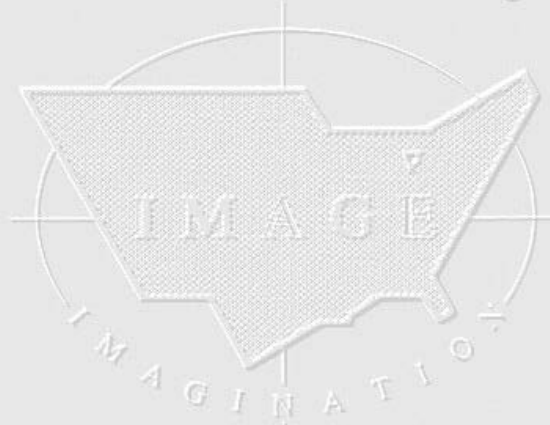
2.



3.



Institute of Mathematical Geography



Solstice: An Electronic Journal of Geography and Mathematics,
Institute of Mathematical Geography (IMaGe).

All rights reserved worldwide, by IMaGe and by the authors.
Please contact an appropriate party concerning citation of this article:

sarhaus@umich.edu

<http://www.imagenet.org>

<http://deepblue.lib.umich.edu/handle/2027.42/58219>

Solstice was a Pirelli INTERNETional Award Semi-Finalist, 2001 (top 80 out of over 1000 entries worldwide)

One article in *Solstice* was a Pirelli INTERNETional Award Semi-Finalist, 2003 (Spatial Synthesis Sampler).

Solstice is listed in the [Directory of Open Access Journals](#) maintained by the University of Lund where it is maintained as a "searchable" journal.

Solstice is listed on the journals section of the website of the American Mathematical Society, <http://www.ams.org/>

Solstice is listed in [Geoscience e-Journals](#)

IMaGe is listed on the website of the Numerical Cartography Lab of The Ohio State University: http://ncl.sbs.ohio-state.edu/4_homes.html

Congratulations to all *Solstice* contributors.

Remembering those who are gone now but who contributed in various ways to *Solstice* or to IMaGe projects, directly or indirectly,

during the first 25 years of IMAge:

Allen K. Philbrick | Donald F. Lach | Frank Harary | William D. Drake |
H. S. M. Coxeter | Saunders Mac Lane | Chauncy D. Harris | Norton S.
Ginsburg | Sylvia L. Thrupp | Arthur L. Loeb | George Kish |

1964 Boulder Drive,
Ann Arbor, MI 48104
734.975.0246

<http://deepblue.lib.umich.edu/handle/2027.42/58219>
sarhaus@umich.edu