

Alcohol expectancies in childhood: change with the onset of drinking and ability to predict adolescent drunkenness and binge drinking

Jennifer M. Jester¹, Maria M. Wong², James A. Cranford¹, Anne Buu¹, Hiram E. Fitzgerald³ & Robert A. Zucker¹

University of Michigan, Department of Psychiatry, Ann Arbor, MI, USA,¹ Department of Psychology, Idaho State University, Pocatello, ID, USA² and Michigan State University, Department of Psychology, East Lansing, MI, USA³

ABSTRACT

Aims We examined the relationship between alcohol expectancies in childhood and onset of drinking, binge drinking and drunkenness in adolescence and the influence of drinking onset on expectancy development. **Design** A prospective, longitudinal study of children assessed for alcohol expectancies and drinking at four time-points between ages 6 and 17 years. **Setting** Community study of families at high risk for alcoholism conducted in a four-county area in the Midwestern United States. **Participants** The study involved 614 children; 460 were children of alcoholics and 70% were male. **Measurements** Expectancies about alcohol effects were measured using the Beverage Opinion Questionnaire and child's drinking by the Drinking and Drug History—Youth Form. **Findings** Partial factor invariance was found for expectancy factors from ages 6 to 17 years. Survival analysis showed that social/relaxation expectancies in childhood predicted time to onset of binge drinking and first time drunk (Wald χ^2 , 1 d.f. = 3.8, $P = 0.05$ and 5.0, $P < 0.05$, respectively). The reciprocal effect was also present; when adolescents began drinking, there was an increase in social/relaxation expectancy and a concomitant increase in slope of the expectancy changes lasting throughout adolescence. **Conclusions** A reciprocal relationship exists between childhood alcohol expectancies and the development of alcohol involvement. Higher expectancies for positive effects predict earlier onset of problem drinking. Onset of use, in turn, predicts an increase in rate of development of positive expectancies.

Keywords Alcohol expectancies, binge drinking onset, drinking onset, drunkenness onset, longitudinal study, social and relaxation expectancies for drinking.

Correspondence to: Jennifer M. Jester, University of Michigan Department of Psychiatry, Ann Arbor, MI 48109 2700, USA. E-mail: jjester@umich.edu
Submitted 28 February 2013; initial review completed 6 May 2013; final version accepted 1 August 2014

INTRODUCTION

What is the relationship between childhood beliefs about alcohol and subsequent alcohol use? Goldman and colleagues noted that expectancies are 'among the strongest predictors of drinking, even after other variables are controlled' (p. 219 [1]). The issue of whether alcohol expectancies also predict onset of drinking is of considerable etiological importance, implying influence of personal characteristics in addition to social pressures. Our working model of expectancies is that they generally work in an automatic fashion to influence drinking behavior, although children can describe their beliefs when asked directly.

Expectancies have been studied as risk factors for heavy alcohol use in two ways. One way is to relate expectancies to other risk for alcoholism. Higher positive expectancies are related to both family history of alcoholism [2–4] and personality risk for alcoholism, such as undercontrolled temperament [3]. Children in heavy drinkers' homes had higher positive and arousal expectancies as early as third grade [3,5,6].

Secondly, expectancies have been studied as predictors of onset and amount of drinking. In pre-adolescence, positive expectancies were related cross-sectionally to drinking [7]. In longitudinal studies traversing 2–4 years in adolescence, there is evidence for the effect of prior positive expectancies on drinking onset as well as reciprocal relationships between positive expectancies and drinking in adolescence [8–10] and in college students [11]. One long-term longitudinal study found that higher positive expectancies at age 16 predicted alcohol misuse

and greater drinking at 35 [12]. Increases in positive expectancies following drinking onset may be due to (i) drinking experiences that confirm pre-existing expectancies, (ii) a self-fulfilling prophecy of drinking resulting in what was expected or (iii) increased attention to the expected outcomes reinforcing the previously held beliefs [10]. In addition, earlier drinkers may have higher subjective responses to the rewarding effects of alcohol, which would lead to an increase in positive expectancies.

Other studies of expectancies have focused upon development of expectancies over time. For the general population, positive expectancies are higher in older children, from 2nd to 12th grade [5,13–15]. The largest change is between third and fourth grades (ages 9–11), as children approach the age of experimentation with alcohol. Miller and colleagues [16] proposed that this age range reflects a ‘critical period’ for expectancy development. Positive expectancies [17] and social facilitation expectancies [8] increase throughout middle and high school. In addition, there is a substantial shift from negative-sedating to positive-arousing expectancies between 6th and 9th grades, suggesting that early experience with alcohol changes perceptions about alcohol’s effects. However, positive expectancies were seen to decrease throughout the college years [11].

Most prior longitudinal studies have traversed only 1–2 years and measured expectancies after drinking onset. In our 9-year longitudinal study, we assessed expectancies long before drinking onset, allowing considerably stronger inference about the developmental effect of expectancies on drinking. We compare expectancy development in children from alcoholic and non-alcoholic families. This high-risk design provides higher than normal variance in onset indicators of drinking problems, increasing power to detect their relationships with expectancies. In addition, we examine multiple drinking behaviors rather than concentrating only on onset age. We hypothesized that expectancies would be more positive for children from alcoholic than control families and for those who are already drinking. In addition, we hypothesized that children of alcoholics (COAs) would have earlier onset of drinking, positive expectancies would predict earlier onset for several drinking behaviors (first drink, binge drinking, first drunkenness) and the drinking experience itself would predict subsequent expectancy increases. Having very early measures of expectancies allows us to examine the structure of expectancies throughout childhood and adolescence.

METHOD

Study design

This research is part of a multi-wave prospective family study [18,19] of a community sample at high risk for the

development of alcoholism among offspring. Alcoholic men were recruited when they were convicted of drunk driving, met the Feighner diagnosis of probable or definite alcoholism [20] and resided with a 3–5-year-old son and the son’s biological mother. Later, all siblings within ± 8 years of age were recruited. Door-to-door canvassing in these families’ neighborhoods yielded a contrast/control group of families with no life-time substance use diagnosis and an intermediate risk group of families with alcoholic fathers (for a detailed description, see [19]).

All family members received a comprehensive assessment including drinking, psychiatric symptomatology and social environment at baseline, and thereafter at 3-year intervals. Assessments were labeled wave 1 (ages 6–8) to wave 4 (ages 15–17), based on the age of the child at time of assessment. This work involved 614 children (460 COAs, 70% male) for whom there was at least one alcohol expectancy measure and drinking onset data. Forty-three per cent of mothers and 35% of fathers had high school education or less and 14% of both mothers and fathers were college graduates.

Beverage opinion questionnaire

The Beverage Opinion Questionnaire (BOQ) (Fitzgerald *et al.*, unpublished), administered at ages 6–8 ($n = 280$), 9–11 ($n = 433$), 12–14 ($n = 514$) and 15–17 ($n = 522$), assesses expectancies for soft drinks (30 items) and alcohol (30 items); responses to the alcohol items have been found to predict adolescent alcohol use [21]. The phrase: ‘Drinking beer or wine would . . .’ was followed by a phrase indicating expectancy for the beverage’s effect, e.g. would ‘make me feel good’. At age 6–8 (9–11 for poor readers), assessors read the instrument and showed five schematic faces, varying from smiling to frowning. The instructions were to point to the smiling face ‘if you completely agree’ and the frowning face ‘if you completely disagree’. Older subjects responded on a five-point scale ranging from ‘agree’ to ‘disagree.’

From the BOQ, 23 content-matched items were used to develop scales comparable to Christiansen *et al.*’s Alcohol Expectancies Questionnaire—Adolescent form (AEQ-A [22]), the most widely used adolescent expectancy measure. For each wave, we performed exploratory factor analysis using Mplus [23], choosing a three-factor solution based on eigenvalues and validity of factors. We eliminated eight items which loaded on more than one factor and two items which did not have face validity with other items on the same factor. For ages 9–11, 12–14 and 15–17, each item loaded on the same factor. Figure 1 shows the standardized loadings for an exploratory factor analysis of these 13 items at 15–17. Analyses at the two earlier time-points produced loadings that were very similar (not shown). The three factors are ‘negative affect

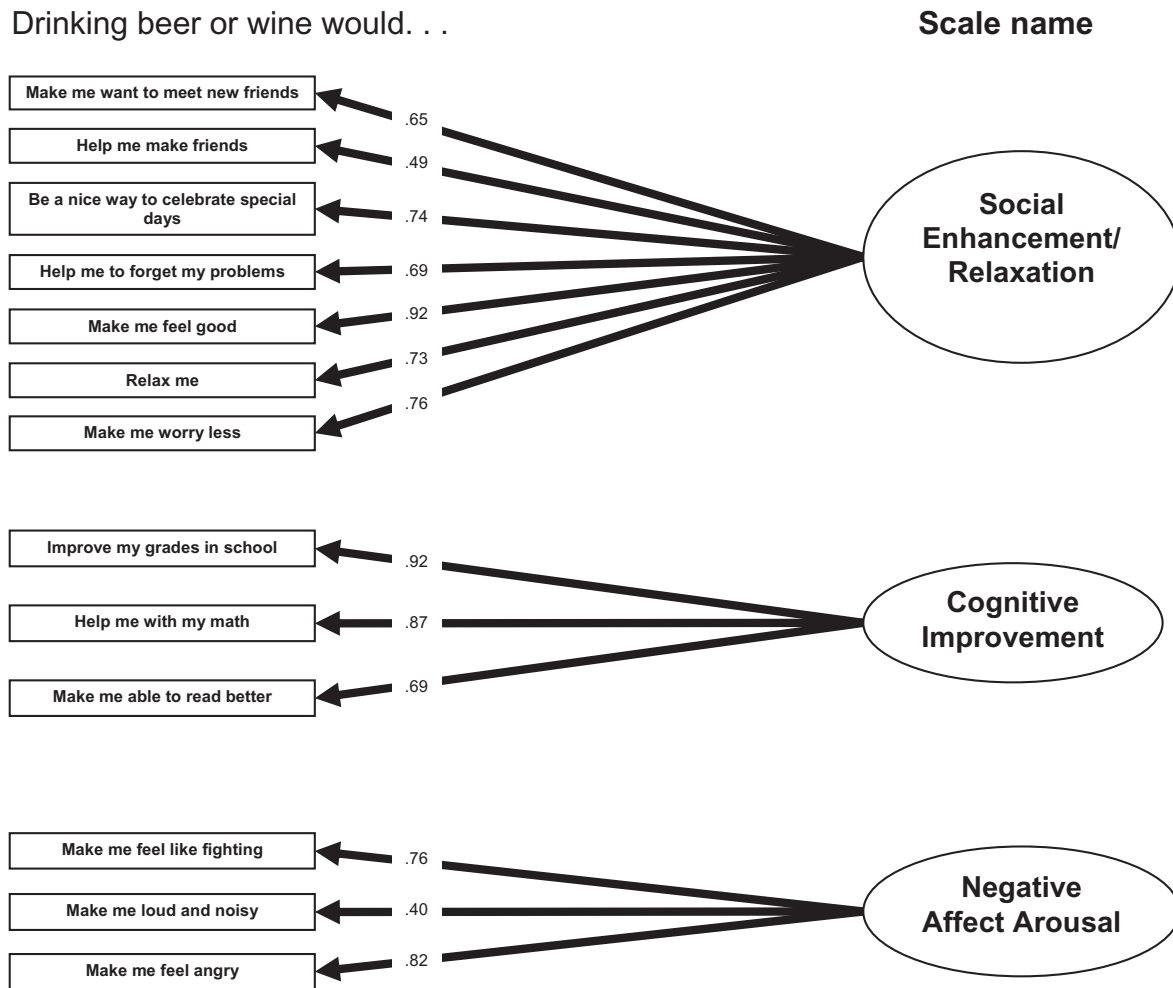


Figure 1 Exploratory factor analysis model for the Beverage Opinion Questionnaire at 15–17. Correlations between factors: social/relaxation with cognitive, 0.39; social/relaxation with arousal, 0.41; arousal with cognitive, 0.32

Table 1 Cronbach’s alpha for the four expectancy scales derived from the Beverage Opinion Questionnaire. The average correlation was found by averaging the Fisher transforms of the three correlations and taking the inverse transform of the results.

Age (years)	Cognitive improvement (3 items)	Negative affect arousal (3 items)	Social enhancement/relaxation (7 items)	Average
6–8	0.66	0.57	0.68	0.64
9–11	0.84	0.64	0.70	0.74
12–14	0.79	0.64	0.83	0.76
15–17	0.87	0.67	0.88	0.82

arousal’ (‘arousal’), ‘cognitive improvement’ (‘cognitive’) and ‘social enhancement/relaxation’ (‘social’) [9]. Sums of items weighted by the factor loadings shown in Fig. 1 produced the scale scores. Correlations between scales at age 6–8 ranged from –0.13 to 0.58, with an average of 0.17; correlations between scales at 9–11 ranged from –0.025 to 0.47, with an average of 0.21; at 12–14 the range was 0.062–0.40, with an average of 0.23; at 15–17, the range was 0.24–0.37, with an average of

0.30. Table 1 presents coefficient alphas for each scale at each time-point, showing an increasing trend with age.

Measurement invariance

Measurement invariance was tested by setting the loadings of each item to be equal across each data wave and then relaxing the constraints and finding the difference in model fit. We tested each factor separately for factor

Table 2 χ^2 and $\Delta\chi^2$ change for factor invariance tests for each expectancy factor.

	χ^2	d.f.	$\Delta\chi^2$	d.f.	P for change
Cognitive improvement loadings free	58.2	48	–	–	–
Cognitive improvement full-factor invariance	69.4	54	11.2	6	0.08
Arousal loadings free	57.9	48	–	–	–
Arousal full-factor invariance	75.5	54	17.6	6	0.0073
Arousal partial factor invariance (loading for 'angry' is free)	60.1	51	2.2	3	0.53
Social/relaxation loadings free	698.5	344	–	–	–
Social full-factor invariance	767.9	362	69.2	18	0.000
Social/relaxation partial factor invariance (loading for 'make friends'; 'meet friends' and 'forget problems' are free)	711.6	353	13.1	9	0.16

invariance. Full factor invariance was found across waves 1–4 for the cognitive factor and partial invariance was found for the arousal factor (freeing the loadings for 'angry' across time) and the social/relaxation factor (freeing loadings for 'make friends', 'meet friends' and 'forget problems' across time). Table 2 shows the χ^2 and change in χ^2 for each model.

Drinking: assessing onset, use and problem use

Drinking and drunkenness were assessed by the Drinking and Drug Use—Child form administered in interview format at ages 6–11, and a self-administered Youth form version thereafter (Zucker *et al.*, unpublished). Drinking onset was assessed by the item: 'How old were you the first time you ever took a drink? Do not count the times when you were given a "sip" by an adult'. First-time drunkenness, frequency and quantity of alcohol use and problems were also assessed. Onset of binge drinking was defined as the first time drinking at least three to four drinks for girls and five to six drinks for boys [24].

Family alcoholism

Life-time DSM-IV alcohol use disorder diagnoses of parents were assessed via the Diagnostic Interview Schedule (DIS-III [25]) and the Drinking and Drug History (Zucker *et al.*, unpublished) administered at baseline (reliability = 0.81). Either parent's diagnosis was sufficient for an alcoholic classification; in 25% of families, both parents met criteria.

Data analysis

Discrete time survival analysis [26], implemented with PROC LOGISTIC (SAS® version 9.3) [27], following the formulation in Singer [26], was used to test the effect of expectancies on onset of drinking, drunkenness and binge drinking, using age from 10 to 17 as the time variable. Onset for the seven children who reported drinking earlier than 10 was set to age 10. For each onset model,

the lowest Akaike information criterion (AIC) was found for the unrestricted model versus linear, quadratic, cubic and logarithmic. Expectancies were treated as time-varying covariates [28]. Expectancy data were only used up to the year prior to onset of the outcome of interest. Because we had onset data for each year and expectancy data every 3 years we would carry the expectancy data from the year of assessment for the next 2 years, but only if the expectancy assessment was completed prior to age of onset, e.g. consider a child who had expectancy assessments at ages 9, 12 and 15 who began binge drinking at 14. The expectancy scores would be set to those measured at 9 for ages 9, 10 and 11 and to those measured at 12 for ages 12 and 13. The assessment at 15 would not be used and expectancy scores for ages 14 and higher would be set to missing. Confirming the proportional hazards assumption, interactions between expectancies and time were non-significant for each onset variable.

The design effect determines the effect on the analysis of having multiple members from the same family [29]. This is a function of the intraclass correlation, which had a maximum value of 0.1 for social/relaxation expectancy at wave 4, and the common cluster size: the number of children (614) divided by number of families involved (323), or 1.9. The design effect was calculated to be 1.09. Generally, a design effect of <2.0 is considered small enough to be ignored based on simulation data [30]; therefore, the effect of non-independence was ignored in the survival analysis.

A linear mixed-model approach, using SAS PROC MIXED, was used to examine the effect of onset of drinking on the expectancy trajectories. We followed the procedure in Singer [31] to test for discontinuous changes in elevation and slope of expectancy following onset of drinking. We tested the effect of sibling dependency for each model. There was no significant improvement in fit by including family as a grouping variable; therefore, we could treat individuals as independent. This also confirms our assumption that we could ignore non-independence based on the design effect.

Missing data

Missing cases

There were 745 children in the entire sample across all waves. We restricted the sample to those 614 with at least one expectancy time assessment and with drinking onset data from any time-point between age 11 and 17. The 131 excluded subjects did not differ from the included sample on proportion of children of alcoholics, age of administration at any wave, gender, age of first drink (for the 88 excluded due to missing expectancy data) or expectancy at any wave (for the 43 excluded due to missing drinking onset data). The amount of missing expectancy data for age 6–8 was 54%, for 9–11 was 24%, for 12–14 was 16% and for 15–17 was 15%. There were no missing data for family alcoholism or drinking onset. The higher level of missing data at 6–8 was due to a lapse in funding that resulted in missing assessments for this age range.

Factor analysis was implemented with Mplus version 7.11. By default, full information maximum likelihood analysis was performed, which includes all available data. In the measurement invariance models using waves 2–4, all the covariance coverage values were >0.5, as preferred [32]. For survival analysis models using expectancies as



Figure 2 Social/relaxation expectancy score from Beverage Opinion Questionnaire for children in alcoholic (COA) and non-alcoholic families age 6–8 (208 COA, 82 controls), age 9–11 (321 COA and 118 controls), 12–14 (382 COA and 132 controls) and age 15–17 (398 COA and 124 controls). * $P < 0.05$

predictors, 17% of cases were omitted due to missing expectancy data. For the linear mixed models, 20% of data points were omitted due to missing data.

RESULTS

Comparison of children of alcoholics and controls

Figure 2 shows that social/relaxation expectancies for COAs was higher than for children of non-alcoholics starting at 9–11, and also shows more differentiation over time. The arousal and cognitive improvement scales were not significantly different at any time-point ($P > 0.1$) (not shown).

Survival analyses predicting onset of drinking, binge drinking and drunkenness from alcohol expectancies and child of alcoholic status

Table 3 shows the hypothesis test results for the predictors tested in the discrete time survival analysis. Gender was related significantly to the onset of binge drinking, but not drinking or first time drunk. There was a main effect of parental alcoholism status for each outcome and an interaction with time in predicting onset of drinking, so that child of alcoholic status had a greater effect at older ages.

For drinking onset no expectancy factors, measured prior to onset of drinking, were significant predictors (Table 3). Precursive social/relaxation expectancies (but not arousal or cognitive) were significant predictors for first time drunk and first binge (Table 3).

Survival curves, based on survival analysis parameter estimates, show that throughout adolescence, children of alcoholics got drunk at earlier ages than those in non-alcoholic families (Fig. 3). Those with higher social expectancies, modeled at 1 standard deviation above the mean, got drunk at earlier ages than those with lower social expectancies (modeled at 1 standard deviation below the mean).

Table 3 Wald χ^2 estimates for the survival analysis model with covariates and interactions with time.

	First drink	First time drunk	First binge
Time	25.3.0 [7], $P < 0.001$	101.1 [7] $P < 0.0001$	12.5 [6] $P = 0.05$
Sex	2.2 [1], $P = 0.14$	2.5 [1], $P = 0.11$	4.5 [1], $P = 0.03$
Sex \times time	10.3 [7], $P = 0.17$	4.7 [7], $P = 0.7$	5.3 [7], $P = 0.61$
Child of alcoholic	0.48 [1], $P < 0.01$	15.9 [1], $P < 0.001$	26.4 [1], $P < 0.001$
Child of alcoholic \times time	18.2 [7], $P < 0.01$	11.1 [7], $P = 0.13$	1.8 [7], $P = 0.97$
Social/relaxation expectancy	1.7 [1], $P = 0.19$	5.0 [1], $P = 0.025$	3.8 [1], $P = 0.05$
Arousal expectancy	0.13 [1], $P = 0.72$	0.08 [1], $P = 0.78$	1.0 [1], $P = 0.31$
Cognitive expectancy	0.6 [1], $P = 0.43$	1.1 [1], $P = 0.29$	0.09 [1], $P = 0.77$

The figures in square brackets are degrees of freedom for the statistical tests.

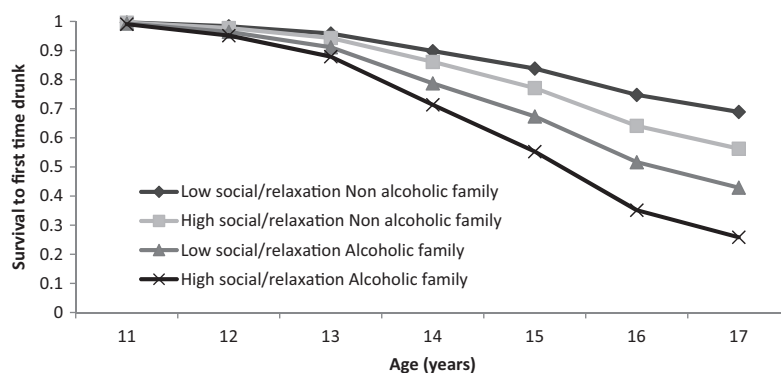


Figure 3 Survival to first time drunk, using survival analysis estimates for the effects of social expectancies and child-of-alcoholic status

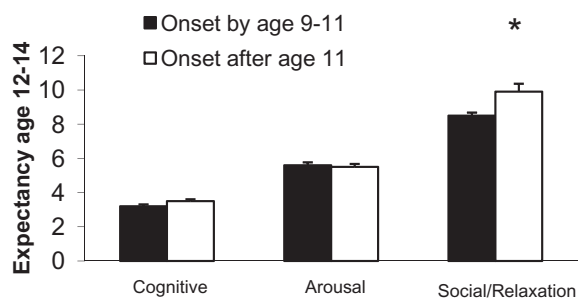


Figure 4 Expectancy scale scores for those who have onset drinking between ages 9–11 ($n=90$) and those who have not ($n=524$); * $P < 0.05$

Effect of drinking onset upon expectancies

In cross-sectional analysis we found higher levels of social/relaxation expectancies for children who had onset drinking prior to the age 12–14, administration of the BOQ, even when controlling for expectancy score at the previous wave (PROC GLM, F for drinking onset = 8.5, $P < 0.01$) (Fig. 4).

We further examined the effect of drinking onset on social/relaxation expectancies with a linear mixed model. Table 4 shows the results of testing various models. The last column indicates which model is used as comparison for the current model. Model A is the simplest model, including age and the fixed effects of child of alcoholic status, gender and interaction between child of alcoholic status and time (Table 4). Adding the effect of drinking onset caused a significant change in model fit (model B, to evaluate discontinuity in elevation), as did adding the effect of time elapsed since onset (model D, to evaluate discontinuity in slope following onset). The best-fitting model included fixed and random effects for age, time since onset and the interaction of age and time since onset (model I). The interaction term shows that the discontinuity in elevation is different at different ages. Inspection of parameter estimates (not shown) showed both an elevation increase and an increase in

slope of social/relaxation expectancies following onset of drinking (this is consistent with the illustration in Fig. 5).

As an illustration of the effect of drinking onset on the development of expectancies, we plotted trajectories of social expectancies for children who started drinking between ages 12 and 14 (Fig. 5) and compared those trajectories with those of children who started drinking after 17. Consistent with the model, the earlier-onset children showed increasing social expectancies during the interval of onset, and their expectancy levels continued to increase throughout adolescence. In contrast, those who did not begin drinking until after 17 showed a slower increase throughout the course of adolescence.

DISCUSSION

The present work found a reciprocal relationship between alcohol expectancies and drinking behavior over the course of middle childhood and adolescence in a sample at high risk for alcoholism. The study begins earlier (ages 6–8) than previous work, and through 9 years of changing social relationships and alcohol availability shows that the relationship between drinking behavior and expectancies is a dynamic one. On one hand, higher social/relaxation expectancies in middle childhood predict earlier onset of drunkenness and binge drinking, which are significant indicators of problem drinking [33–36]. On the other hand, when children began experimenting with alcohol, there was a discontinuity in trajectory of positive expectancy development, with both an elevation change (a ‘bump’ up) and an increase in rate of development, i.e. a steeper expectancy growth for children with early onset. Moreover, living in an alcoholic home predicted both higher positive expectancies and earlier onset of all drinking outcomes. Early-onset drinking and an alcoholic home have a common thread; they involve greater exposure to other drinkers. We cannot test this by manipulating children’s exposure to drinking environments. However, both children of alcoholics and

Table 4 Comparison of fitting alternative discontinuous change trajectories for the social/relaxation expectancies.

Model	-2LogL	Fixed effects	Variance components	Comparison model: Delta -2LogL (d.f.)
A: Time and fixed-effects only	16 480.1	2	4	
B: Time + elevation change	16 403.2	3	7	A: 76.9*** [4]
C: Remove random effect of elevation change	16 457.6	3	4	B: 54.4*** [3]
D: Time + slope change	16 303.5	3	7	A: 176.4*** [4]
E: Remove random effect of slope change	16 342.6	3	4	D: 39.1*** [3]
F: Time + elevation change + slope change	16 216.5	4	11	Versus B: 186.7*** [5] Versus D: 87*** [5]
G: Remove random effect of slope change	16 289.1	4	7	F: 72.6*** [4]
H: Remove random effect of elevation change	16 289.7	4	7	F: 73.2*** [4]
I: Include interaction of onset time and time	16 212.6	4	11	B: 190.6*** [5]
J: Remove random effect of interaction term in I	16 281.2	4	7	I: 68.6*** [4]

The figures in square brackets are degrees of freedom for the statistical tests . *** $P < 0.005$.

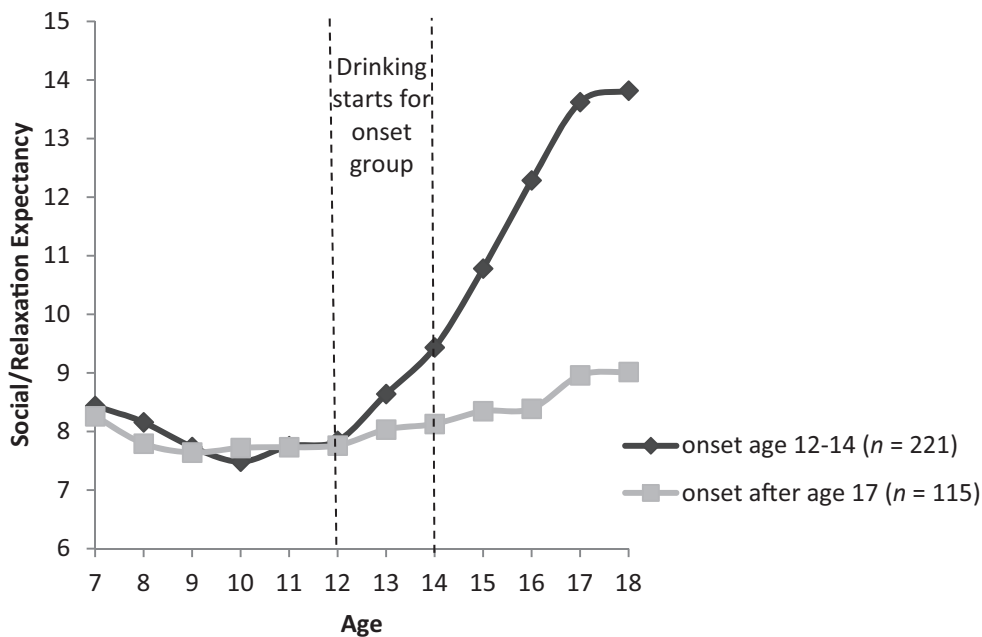


Figure 5 Trajectories of development of social/relaxation expectancies for children who start drinking between ages 12–14 and those who delay drinking onset until after age 17

early-onset drinkers have higher expectancies that drinking will lead to positive social experience, suggesting indirectly that elevated exposure to drinkers and drinking leads them to develop these expectations. This explanation is consistent with findings from earlier work with these families [37,38] showing that, even in pre-school, children of parents who drink heavily have a perspective that is influenced by parental drinking. They project significantly greater alcohol use onto common social situations and the level of their attribution is predicted by level of self-reported parental drinking. However, this finding is at odds with the work by Miller [16], who found that positive expectancies were lower in children with family

history of alcoholism. Concordance of more extreme substance use behaviors (e.g. frequent intoxication) had stronger effects on marital satisfaction [39], and this increased concordance is related to higher levels of positive marital behaviors [40] which, in turn, is related to less family discord. Children in these families may develop positive expectancies if they perceive that their parents drinking together leads to lower discord.

Social/relaxation expectancies were related to earlier onset of problematic drinking, but not onset of any drinking. Onset of drinking is driven by contextual factors such as availability in addition to social status needs for peer popularity and approval. This also

explains why cognitive and arousal expectancies were not related to onset of drinking, first drunkenness or first binge drink. Given that early use is driven to a large degree by social motives, the behaviors related to cognitive and arousal expectancies would not be as salient. Previous research has also found that expectancies are related differentially to drinking behavior, although studies differ about which expectancies are related to which outcome [3,41–47].

Our findings do not support the conclusion that third and fourth grades (approximately ages 9–11) are a critical period for accelerated expectancy development [16]. The reasons for these differences in findings are unclear, although study differences may account for some of them. The present study involves high-risk children who are more likely on a course to an alcoholic outcome than the Smith study, which involves a general population sample. Children in high-risk environments may have early experience that plays a stronger role in shaping expectancy development than the general population, where later social-contextual factors would be anticipated to be more important. In addition, boys were over-represented in the current sample. However, results indicate that boys and girls have similar patterns of relationships of expectancies with drinking. Finally, the work was carried out in a Midwestern state, in an area where ethnic and racial minorities were poorly represented. Therefore, transferability of our findings to general populations needs to be considered with caution.

Despite the advantages conveyed by this study's longitudinal design, and the very early start in observing the process of expectancy development, there are also some other limitations. A lapse in funding led to higher levels of missing data in the youngest assessment. As these data were missing due to a cause unrelated to the participant characteristics, they are missing completely at random and will not cause bias in the results [48], but the extra missing data lead to higher error in estimation of expectancies in that age range. There was also lower expectancy scale reliability in earlier ages. This is due probably to a less solidified understanding of the effects of alcohol at these earlier ages. The negative affect arousal factor also showed lower reliability throughout the time-course, making results related to it less definitive than the other scales, which showed better reliability.

In conclusion, we found that higher social/relaxation alcohol expectancies in early life predicted earlier onset of problematic drinking. Moreover, once drinking begins the development of social/relaxation expectancies increases and accelerates over its previous rate of growth.

Declaration of interests

None.

Acknowledgements

This activity was supported by NIH R37 AA07065 (RAZ) and K01AA016591 (AB).

References

1. Goldman M. S., Del Boca F. K., Darkes J. Alcohol expectancy theory: the application of cognitive neuroscience. In: Leonard K. E., Blane H. T., editors. *Psychological Theories of Drinking and Alcoholism*, 2nd edn. New York: Guilford Press; 1999, pp. 203–46.
2. Brown S. A., Creamer V. A., Stetson B. A. Adolescent alcohol expectancies in relation to personal and parental drinking patterns. *J Abnorm Psychol* 1987; **96**: 117–21.
3. Mann L. M., Chassin L., Sher K. J. Alcohol expectancies and the risk for alcoholism. *J Consult Clin Psychol* 1987; **55**: 411–7.
4. Shen S., Locke Wellman J., Hill S. Y. Adolescent alcohol expectancies in offspring from families at high risk for developing alcoholism. *J Stud Alcohol* 2001; **62**: 763–72.
5. Dunn M. E., Goldman M. S. Age and drinking-related differences in the memory organization of alcohol expectancies in 3rd-, 6th-, 9th-, and 12th-grade children. *J Consult Clin Psychol* 1998; **66**: 579–85.
6. O'Connor R. M., Fite P. J., Nowlin P. R., Colder C. R. Children's beliefs about substance use: an examination of age differences in implicit and explicit cognitive precursors of substance use initiation. *Psychol Addict Behav* 2007; **21**: 525–33.
7. Gunn R. L., Smith G. T. Risk factors for elementary school drinking: pubertal status, personality, and alcohol expectancies concurrently predict fifth grade alcohol consumption. *Psychol Addict Behav* 2010; **24**: 617–27.
8. Aas H. N., Leigh B. C., Anderssen N., Jakobsen R. Two-year longitudinal study of alcohol expectancies and drinking among Norwegian adolescents. *Addiction* 1998; **93**: 373–84.
9. Bauman K. E., Fisher L. A., Bryan E. S., Chenoweth R. L. Relationship between subjective expected utility and behavior: a longitudinal study of adolescent drinking behavior. *J Stud Alcohol* 1985; **46**: 32–8.
10. Smith G. T., Goldman M. S., Greenbaum P. E., Christiansen B. A. Expectancy for social facilitation from drinking: the divergent paths of high-expectancy and low-expectancy adolescents. *J Abnorm Psychol* 1995; **104**: 32–40.
11. Sher K. J., Wood M. D., Wood P. K., Raskin G. Alcohol outcome expectancies and alcohol use: a latent variable cross-lagged panel study. *J Abnorm Psychol* 1996; **105**: 561–74.
12. Patrick M. E., Wray-Lake L., Finlay A. K., Maggs J. L. The long arm of expectancies: adolescent alcohol expectancies predict adult alcohol use. *Alcohol Alcohol* 2010; **45**: 17–24.
13. Bekman N. M., Goldman M. S., Worley M. J., Anderson K. G. Pre-adolescent alcohol expectancies: critical shifts and associated maturational processes. *Exp Clin Psychopharmacol* 2011; **19**: 420–32.
14. Dunn M. E., Goldman M. S. Empirical modeling of an alcohol expectancy memory network in elementary school children as a function of grade. *Exp Clin Psychopharmacol* 1996; **4**: 209–17.
15. Kraus D., Smith G. T., Ratner H. H. Modifying alcohol-related expectancies in grade-school children. *J Stud Alcohol* 1994; **55**: 535–42.

16. Miller P. M., Smith G. T., Goldman M. S. Emergence of alcohol expectancies in childhood: a possible critical period. *J Stud Alcohol* 1990; **51**: 343–9.
17. Cumsille P. E., Sayer A. G., Graham J. W. Perceived exposure to peer and adult drinking as predictors of growth in positive alcohol expectancies during adolescence. *J Consult Clin Psychol* 2000; **68**: 531–6.
18. Zucker R. A., Ellis D. A., Fitzgerald H. E., Bingham C. R., Sanford K. Other evidence for at least two alcoholisms II: life course variation in antisociality and heterogeneity of alcoholic outcome. *Dev Psychopathol* 1996; **8**: 831–48.
19. Zucker R. A., Fitzgerald H. E., Refior S. K., Puttler L. I., Pallas D. M., Ellis D. A. The clinical and social ecology of childhood for children of alcoholics: description of a study and implications for a differentiated social policy. In: Fitzgerald H. E., Lester B. M., Zuckerman B. S., editors. *Children of Addiction: Research, Health and Policy Issues*. New York: Routledge Falmer; 2000, pp. 109–41.
20. Feighner J. P., Robins E., Guze S. B., Woodruff R. A. Jr, Winokur G., Munoz R. Diagnostic criteria for use in psychiatric research. *Arch Gen Psychiatry* 1972; **26**: 57–63.
21. Cranford J. A., Zucker R. A., Jester J. M., Puttler L. I., Fitzgerald H. E. Parental alcohol involvement and adolescent alcohol expectancies predict alcohol involvement in male adolescents. *Psychol Addict Behav* 2010; **24**: 386–96.
22. Christiansen B. A., Goldman M. S., Inn A. Development of alcohol-related expectancies in adolescents: separating pharmacological from social-learning influences. *J Consult Clin Psychol* 1982; **50**: 336–44.
23. Muthén L. K., Muthén B. O. *Mplus User's Guide*, 6th edn. Los Angeles, CA: Muthén & Muthén; 1998–2011.
24. Donovan J. E. Estimated blood alcohol concentrations for child and adolescent drinking and their implications for screening instruments. *Pediatrics* 2009; **123**: e975–81.
25. Robins L. N., Helzer J. E., Croughan J. L., Ratcliff K. S. *The NIMH Diagnostic Interview Schedule: Its History, Characteristics and Validity*. St Louis, MO: Washington University School of Medicine; 1980.
26. Singer J. D., Willett J. B. It's about time: using discrete-time survival analysis to study duration and the timing of events. *J Educ Stat* 1993; **18**: 155–95.
27. SAS Institute Inc. *Base SAS® 9.3 Procedures Guide*. Cary, NC: SAS Institute Inc.; 2011.
28. Allison P. *Survival Analysis Using the SAS® System: A Practical Guide*. Cary, NC: SAS Institute Inc.; 1995.
29. Jester J. M., Nigg J. T., Adams K., Fitzgerald H. E., Puttler L. I., Wong M. M. *et al.* Inattention/hyperactivity and aggression from early childhood to adolescence: heterogeneity of trajectories and differential influence of family environment characteristics. *Dev Psychopathol* 2005; **17**: 99–125.
30. Muthén B., Satorra A. Complex sample data in structural equation modeling. *Sociol Methodol* 1995; **25**: 267–316.
31. Singer J. D., Willett J. B. *Applied Longitudinal Data Analysis: Modeling Change and Event Occurrence*. Oxford/New York: Oxford University Press; 2003.
32. Schafer J. L. *Analysis of Incomplete Multivariate Data*. London/New York: Chapman & Hall; 1997.
33. Henry K. L., McDonald J. N., Oetting E. R., Walker P. S., Walker R. D., Beauvais F. Age of onset of first alcohol intoxication and subsequent alcohol use among urban American Indian adolescents. *Psychol Addict Behav* 2011; **25**: 48–56.
34. Hingson R., Heeren T., Winter M. R., Wechsler H. Early age of first drunkenness as a factor in college students' unplanned and unprotected sex attributable to drinking. *Pediatrics* 2003; **111**: 34–41.
35. Hingson R., Heeren T., Zakocs R., Winter M., Wechsler H. Age of first intoxication, heavy drinking, driving after drinking and risk of unintentional injury among U.S. college students. *J Stud Alcohol* 2003; **64**: 23–31.
36. Morean M. E., Corbin W. R., Fromme K. Age of first use and delay to first intoxication in relation to trajectories of heavy drinking and alcohol-related problems during emerging adulthood. *Alcohol Clin Exp Res* 2012; **36**: 1991–9.
37. Noll R. B., Zucker R. A., Greenberg G. S. Identification of alcohol by smell among preschoolers: evidence for early socialization about drugs occurring in the home. *Child Dev* 1990; **61**: 1520–7.
38. Zucker R. A., Kincaid S. B., Fitzgerald H. E., Bingham C. R. Alcohol schema acquisition in preschoolers: differences between children of alcoholics and children of nonalcoholics. *Alcohol Clin Exp Res* 1995; **19**: 1011–7.
39. Mudar P., Leonard K. E., Soltysinski K. Discrepant substance use and marital functioning in newlywed couples. *J Consult Clin Psychol* 2001; **69**: 130–4.
40. Floyd F. J., Cranford J. A., Daugherty M. K., Fitzgerald H. E., Zucker R. A. Marital interaction in alcoholic and nonalcoholic couples: alcoholic subtype variations and wives' alcoholism status. *J Abnorm Psychol* 2006; **115**: 121–30.
41. Bekman N. M., Anderson K. G., Trim R. S., Metrik J., Diulio A. R., Myers M. G. *et al.* Thinking and drinking: alcohol-related cognitions across stages of adolescent alcohol involvement. *Psychol Addict Behav* 2011; **25**: 415–25.
42. Christiansen B. A., Goldman M. S. Alcohol-related expectancies versus demographic/background variables in the prediction of adolescent drinking. *J Consult Clin Psychol* 1983; **51**: 249–57.
43. Christiansen B. A., Smith G. T., Roehling P. V., Goldman M. S. Using alcohol expectancies to predict adolescent drinking behavior after one year. *J Consult Clin Psychol* 1989; **57**: 93–9.
44. Killen J. D., Hayward C., Wilson D. M., Haydel K. F., Robinson T. N., Taylor, *et al.* Predicting onset of drinking in a community sample of adolescents: the role of expectancy and temperament. *Addict Behav* 1996; **21**: 473–80.
45. Newcomb M. D., Chou C. P., Bentler P. M., Huba G. J. Cognitive motivations for drug use among adolescents: longitudinal tests of gender differences and predictors of change in drug use. *J Couns Psychol* 1988; **35**: 426–38.
46. Rather B. C. Using the Alcohol Expectancy Questionnaire-Adolescent Form to predict college drinking: long versus short forms. *Addict Behav* 1990; **15**: 567–72.
47. Reese F. L., Chassin L., Molina B. S. G. Alcohol expectancies in early adolescents: predicting drinking behavior from alcohol expectancies and parental alcoholism. *J Stud Alcohol* 1994; **55**: 276–84.
48. Schafer J. L., Graham J. W. Missing data: our view of the state of the art. *Psychol Methods* 2002; **7**: 147–77.