



Two  
Jima



1  
Jack A. [unclear]  
Section  
V.A.C.





*Making slow progress over volcanic sands off SE  
Beaches at IWO. Mt. Suribachi looms through dust  
and smoke in the Background.*





*Many never made the trip over this ground.*





*It was rugged going during the early phases  
of the operation.*





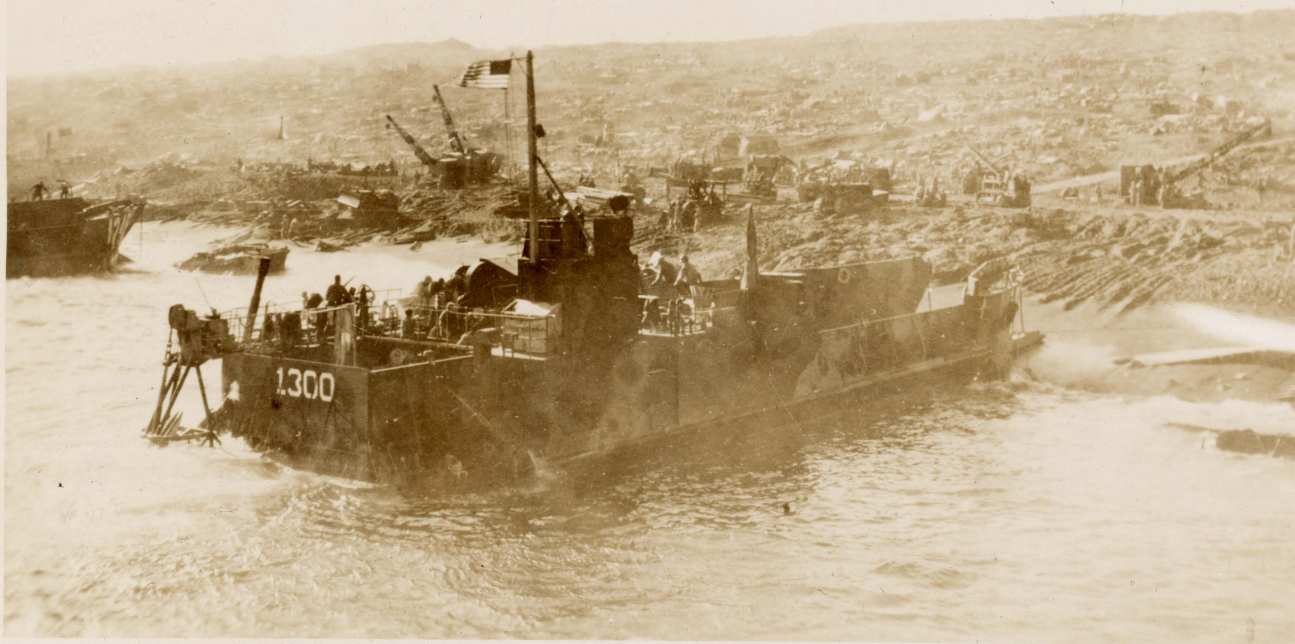
*Fire and movement over volcanic dunes off  
southeastern beaches.*





*Just Sand and Rock..*





*LCT unloading at beach YELLOW 2.....*





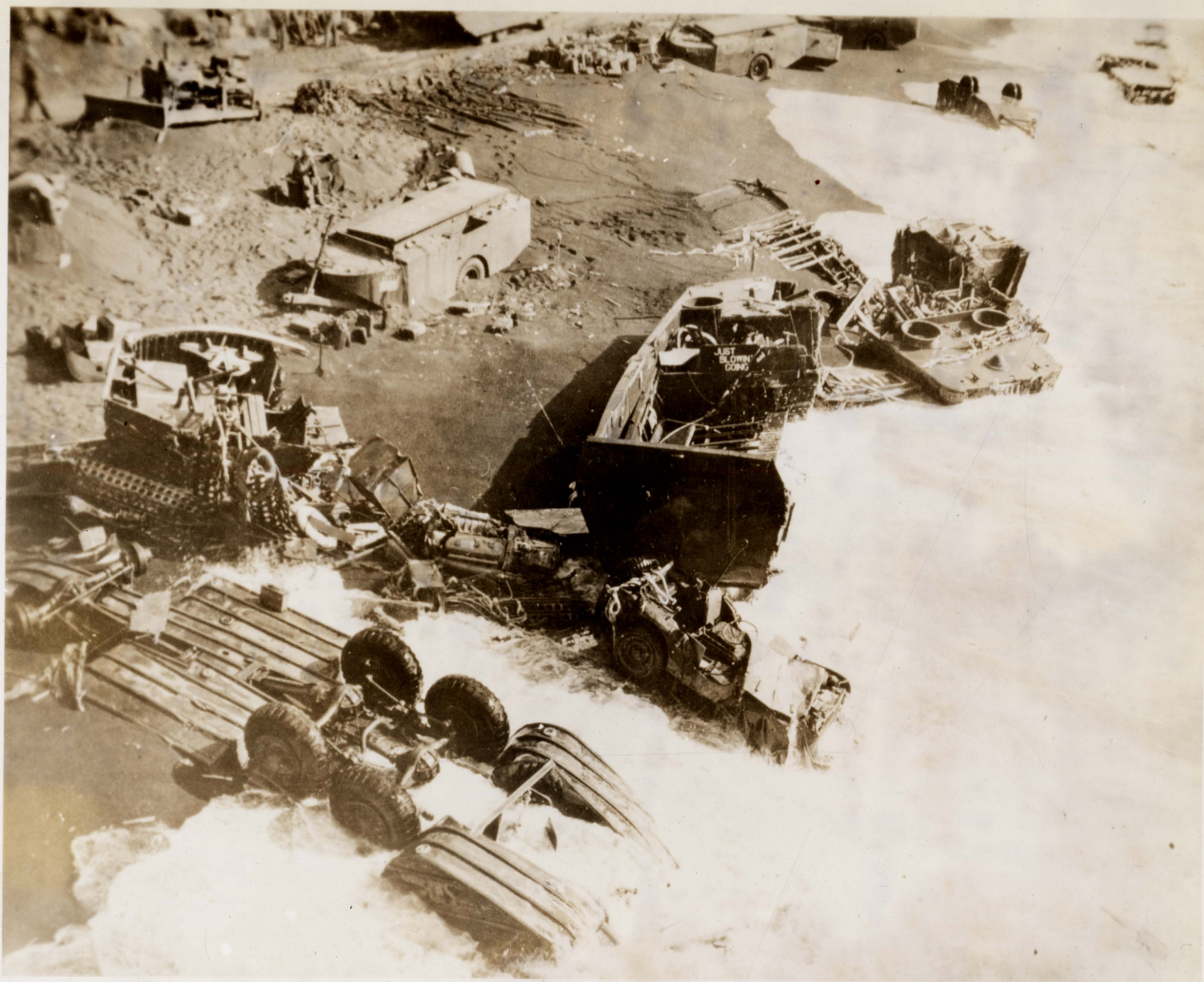
*Junk and wreckage on the Landing  
Beaches.*





*Organization finally restored on the hard hit  
landing beaches.*





*Some of the landing craft and vehicles were  
"Just Blown and Gone" those first few days.*









*LST's unloading on Southeastern Landing Beaches.*





*The surf was to much for Small Landing Craft.*





*Looking northwest over southeastern landing beaches.*



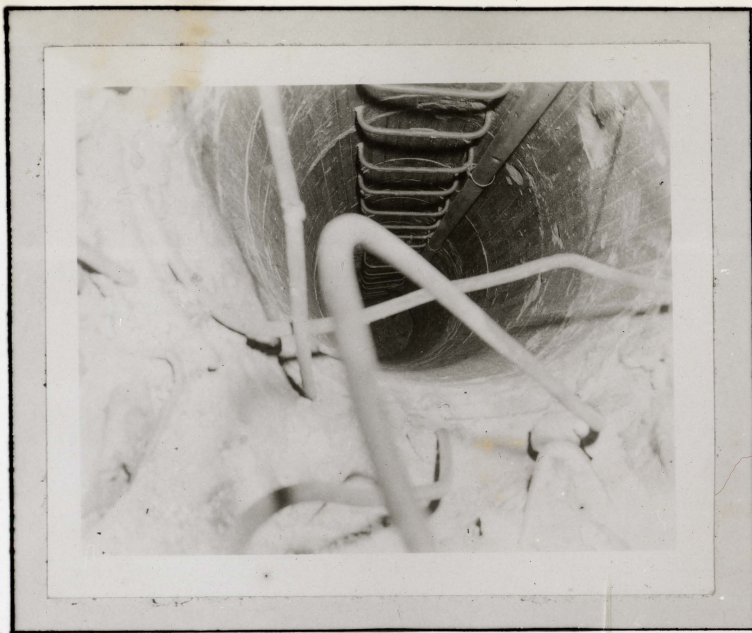




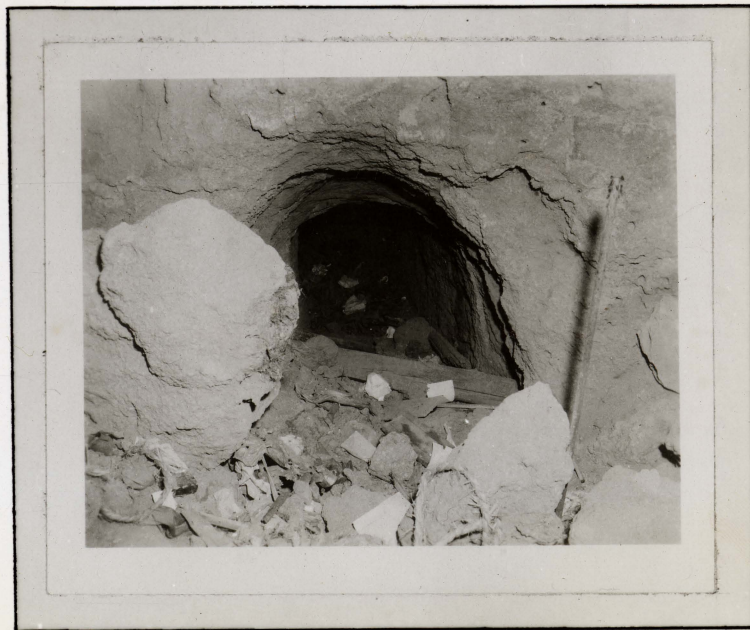
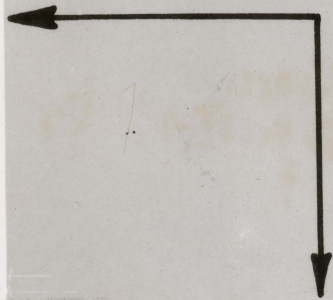


*Destruction littered the beach around this hospital unit.*





*Elaborate caves and tunnels  
were carved out of the volcanic  
rock throughout the Island.*







*Reinforced  
Japanese  
Cave.*





*Caves were numerous.*





Riflemen covering flame thrower as he "FRIES"  
them out.





TURKEY KNOB





HILL 382





*Inch by inch they creep up and over.....*





*Abandoned Marine Tank in its grave.*





Riflemen working over rugged ground. Theirs  
was the toughest of jobs.









*Mangled and scorched Japanese bodies after being worked over by Marine flamethrower.*













*Southwestern view of Mt. Suribachi along  
Landing beaches.*





*Anti-Aircraft emplacement overlooking  
Motoyama field #1.*





*Many caves like this — made the going very  
slow.*





*Rugged terrain encountered at northern end of  
IWO JIMA.*





*Pulverized terrain due to constant bombing - naval  
gunfire and artillery barrages.*





*A patrol working over rear areas for by-passed  
JA P.S.*





"NO MANS LAND."





*Mopping up Rear Areas.*





*Careful and Cautious investigation was made  
of all Japanese caves.*





*Well hidden Japanese emplacements made  
it very rough going.*



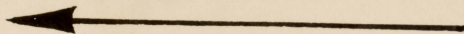


*Japanese Lt. Tank in anti-tank ditch*

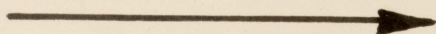




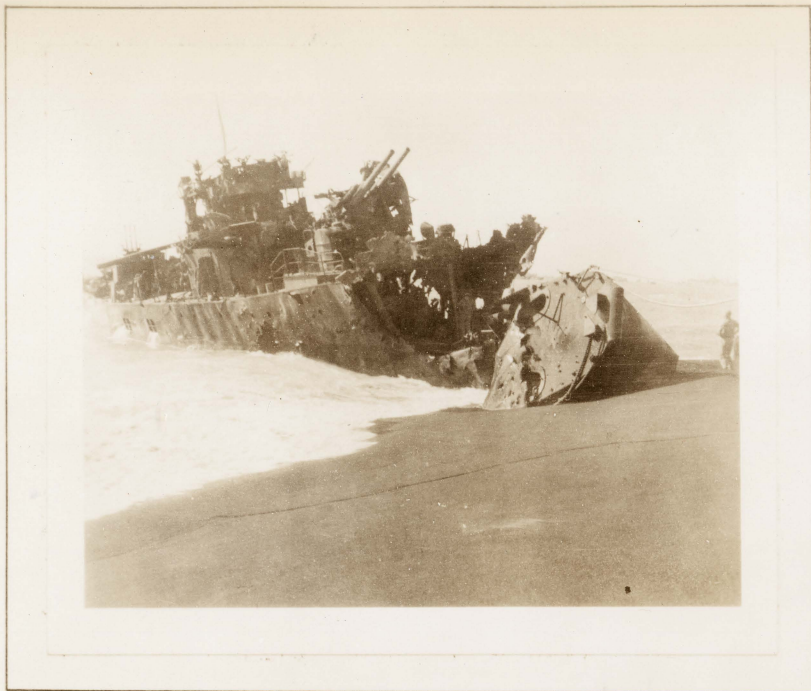
*Wrecked Japanese landing  
craft on beach Blue 2.  
Suribachi can be seen in the  
background.*



*Steaming toward the  
objective.*



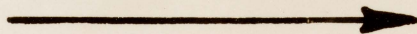




*Wrecked Japanese  
landing craft on the  
beach.*



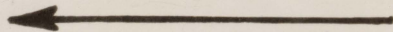
*LSTs unloading on south  
eastern beaches.*



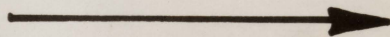




*Wrecked Japanese aircraft  
on Motoyama field No. 1.*



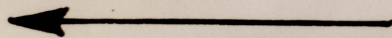
*Emplaced Japanese Tank  
used as Pillbox.*



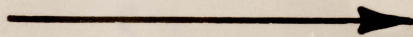




*Surf pounding wrecked  
landing craft that were  
stopped on the beach.*



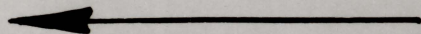
*Wrecked Japanese craft  
littered the beaches.*



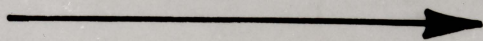




*From atop Mt. Suribachi  
looking down southeastern  
beaches.*



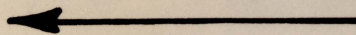
*Unloading on the western  
beaches.*



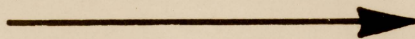




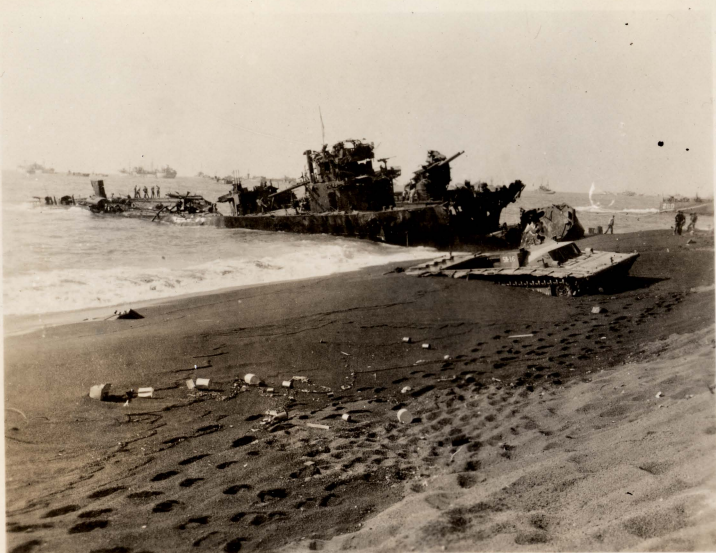
*Looking down western  
beach from atop Mt.  
Suribachi.*



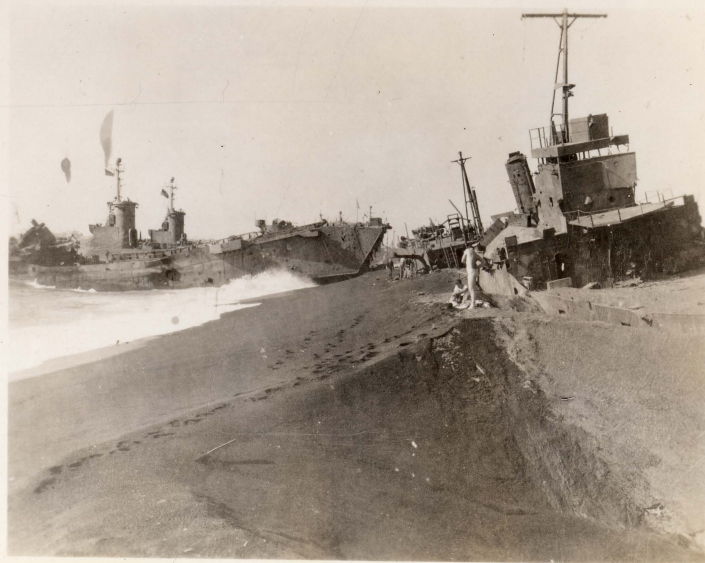
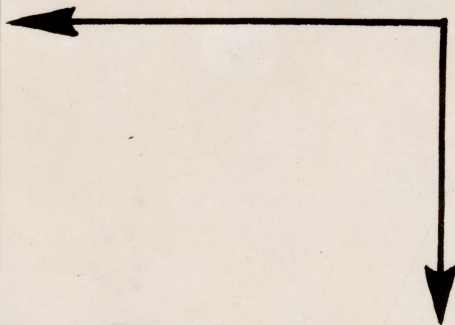
*Empty artillery shell cases  
after morning preparation.*







*Beached Japanese Landing  
Craft — destroyed prior to  
invasion by bombing and  
naval gunfire...*







*The corpsmen did a wonderful job.....*





**AIR MAIL**





*Fast.....  
Speedy, evacuation  
of wounded by  
AIR.*

































*JAPANESE ROCKET BOMB.*





Third  
and  
Fourth  
Marine Division  
cemetery.





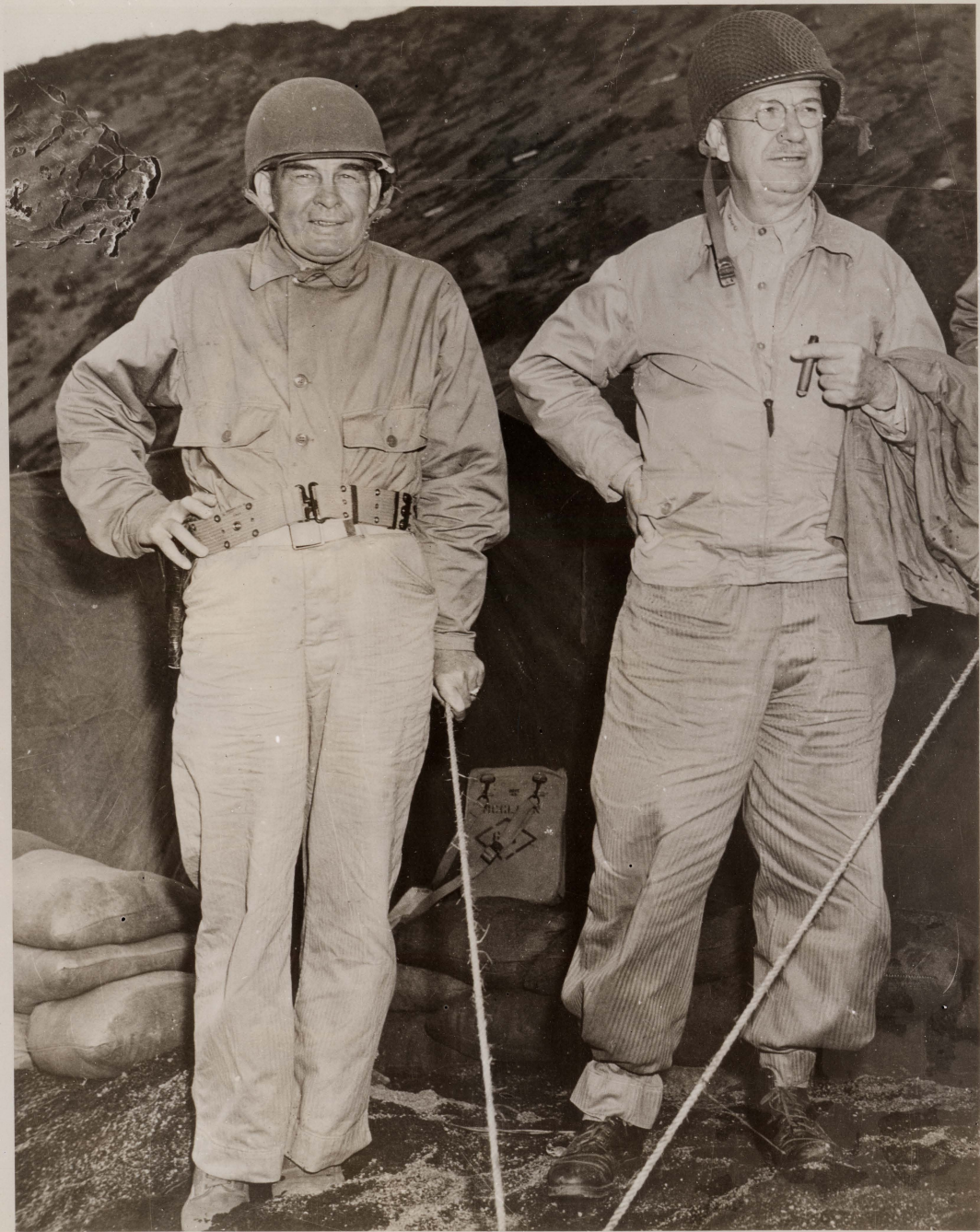
















































*The Island was OURS.*



