



Fig. 2.31. *Meeting Between Yaoshan and Li Ao*. Inscribed by Yanxi Guangwen 偃溪廣聞 (1189-1263). Southern Song dynasty, 1254-1256. Horizontal left mounted as hanging scroll, ink on paper; 31.8 x 84.5 cm. The Metropolitan Museum of Art, New York.



Fig. 2.32. *Luohan #8W holding sleeve*. Thousand Buddha Hall, Lingyan temple. Northern Song dynasty, circa 1066. Photo by author.



Fig. 2.33. *Luohan #22E holding sleeve*. Thousand Buddha Hall, Lingyan temple. Northern Song dynasty, circa 1066. Photo by author.



Fig. 2.34. *Luohan #5W holding sleeve while pointing*. Thousand Buddha Hall, Lingyan temple. Northern Song dynasty, circa 1066. Photo by author.



Fig. 2.35. *Luohans Listening*: #6W (left) and #17W (right). Thousand Buddha Hall, Lingyan temple. Northern Song dynasty, circa 1066. Photos by author.



Fig. 2.36. *Luohans Listening*: #19W (left) and #28E (right). Thousand Buddha Hall, Lingyan temple. Northern Song dynasty, circa 1066. Photos by author.



Fig. 2.37. *Luohan #1W (south wall west side) and Luohan #21E (south wall east side). Thousand Buddha Hall, Lingyan temple. Northern Song dynasty, circa 1066. Photos by author.*



Fig. 2.38. *Figure of Luohan #6W*. Thousand Buddha Hall, Lingyan Temple. Northern Song dynasty, circa 1066. Photo by author.



Fig. 2.39. Bernd Melcher. *Luohan #6W holding a walking stick*. Thousand Buddha Hall, Lingyan Temple, 1921. Reprinted from Melcher, *Der Tempelbau*, Pl. 18.



Fig. 2.40. *Luohan* #9. Main hall of the East Tower 中東樓, Qinglian Temple 青蓮寺, Jicheng county 晉城, Shanxi province. Song dynasty (960-1279). Painted clay.



Fig. 2.41. Detail of *Portrait of Monk Dazhi* 大智 (1048-1116). Jin dynasty (1115-1234). Hanging scroll, ink and color on silk. Overall dimensions: 92.5 cm x 40.5 cm. The Cleveland Museum of Art.



Fig. 2.42. *Hand gesture of Luohan #14W*. Thousand Buddha Hall, Lingyan Temple. Northern Song dynasty, circa 1066. Photo by author.



Fig. 2.43. *Luohan #37E sewing*. Thousand Buddha Hall, Lingyan Temple. Northern Song dynasty, circa 1066. Photo by author.



Fig. 2.44. Lin Tinggui 林庭珪 (act. late 12th c.). *Luohans Laundering*. Southern Song dynasty, 1178-1188. Hanging scroll, ink and colors on silk; 112.3 x 53.5 cm. Freer Gallery of Art, Washington, D.C.



Fig. 2.45. Muqi Fachang 牧溪法常 (act. mid- to late 13th c.). *Monk Mending Clothes in the Morning Sun*. Inscribed by Dongsou Yuankai 東叟元愷 (act. 1314-1340). Yuan dynasty (1279-1368), late 13th c. Hanging scroll, ink on paper; 84.5 x 30.5 cm. Kyoto National Museum. Reprinted from Naomi Noble Richard and Melanie B.D. Klein eds., *Awakenings: Zen Figure Paintings in Medieval Japan* (New York: Japan Society, 2007), pl. 23.



Fig. 2.46. *Meditating Luohan #1W*. Thousand Buddha Hall. Northern Song dynasty, circa 1066.
Photo by author.



Fig. 2.47. *Meditating Luohan #21E*. Thousand Buddha Hall. Northern Song dynasty, circa 1066.
Photo by author.



Fig. 2.48. *Bodhidharma Meditating Facing a Wall*. Southern Song dynasty (1127-1279), 13th c.
Hanging scroll, ink and color on silk; 116.2 x 46.3 cm. The Cleveland Museum of Art.



Fig. 2.49. (left) *Luohan #25E gazing*. Thousand Buddha Hall, Lingyan temple. Northern Song dynasty, circa 1066. Photo by author.



Fig. 2.50. (right) *Luohan #15W with hands in ānjali mudra*. Thousand Buddha Hall, Lingyan temple. Northern Song dynasty, circa 1066. Photo by author.



Fig. 2.51. *Arhat Kālika* 迦里迦. Tang dynasty (618-907), circa 1st half of the 8th c. Ink and color on paper; 43.3 cm x 26.1 cm. British Museum, London.



Fig. 2.52. *Buddha Pentad with Ananda and Mahakasyapa*. Central Binyang Cave 宾阳中洞, Longmen Grotto 龍門石窟, Henan province. Northern Wei dynasty, 505-516. John C. and Susan L. Huntington Photographic Archive of Buddhist and Asian Art.



Fig. 2.53. *Ānanda* (detail). Central Binyang Cave 宾阳中洞, Longmen Grotto 龍門石窟, Henan province. Northern Wei dynasty, 505-516. John C. and Susan L. Huntington Photographic Archive of Buddhist and Asian Art.



Fig. 2.54. *Faces of Luohans #5W, #16W, and #39E*. Thousand Buddha Hall, Lingyan temple. Northern Song dynasty, circa 1066. Photos by author.

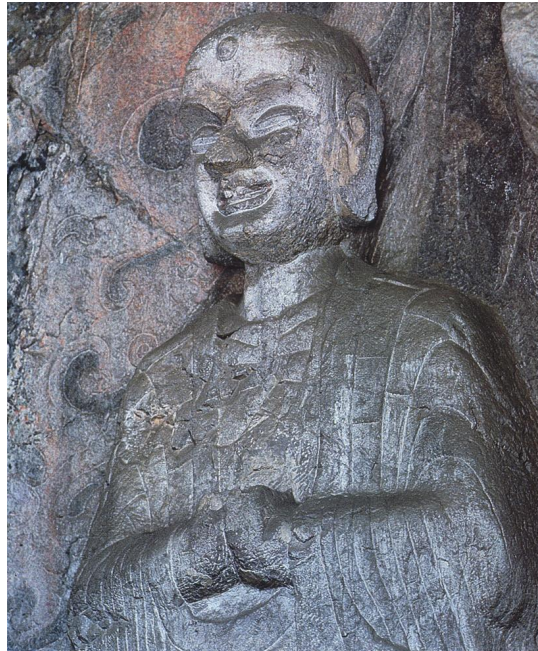


Fig. 2.55. *Mahākāśyapa* (detail). Central Binyang Cave 宾阳中洞, Longmen Grotto 龍門石窟, Henan province. Northern Wei dynasty, 505-516. John C. and Susan L. Huntington Photographic Archive of Buddhist and Asian Art.



Fig. 2.56. *Face and Chest of Luohan #36E*. Thousand Buddha Hall, Lingyan temple. Northern Song dynasty, circa 1066. Photo by author.



Fig. 2.57. *Mahākāśyapa*. Cave 419, north side of the west wall. Mogao Grotto 莫高窟, Dunhuang, China. Sui dynasty (581-618). Painted stucco. John C. and Susan L. Huntington Photographic Archive of Buddhist and Asian Art.



Fig. 2.58. *Faces of Luohan #14W and #15W*. Thousand Buddha Hall, Lingyan temple. Northern Song dynasty, circa 1066. Photos by Martin J. Powers (#14W) and author (#15W).

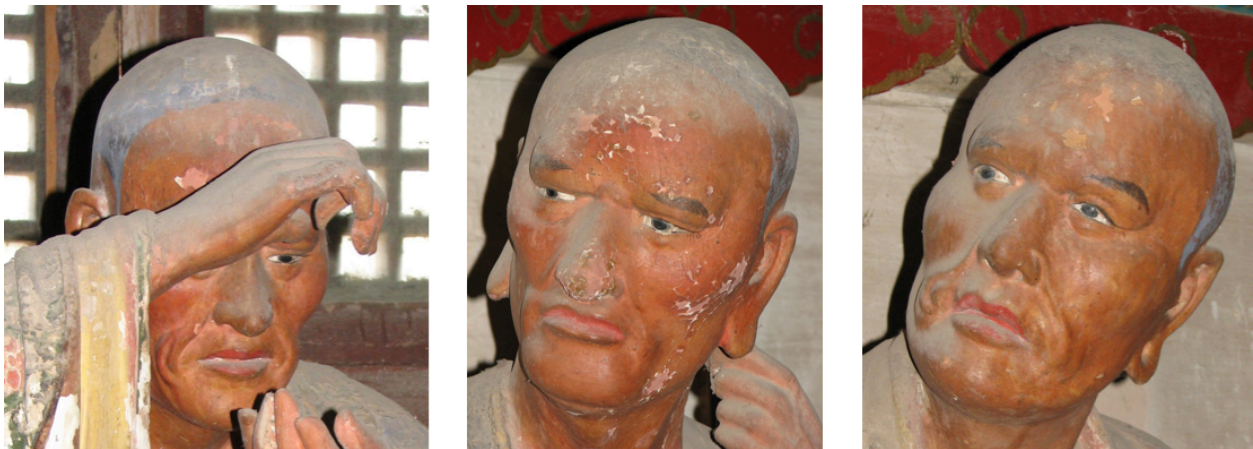


Fig. 2.59. *Faces of Luohan #2W, #6W, and #18W*. Thousand Buddha Hall, Lingyan temple. Northern Song dynasty, circa 1066. Photos by author.



Fig. 2.60. *Patriarchs*. Kanjing temple 看經寺, Longmen Grotto 龍門石窟, Henan province. Tang dynasty, 732 CE. Limestone relief carving.

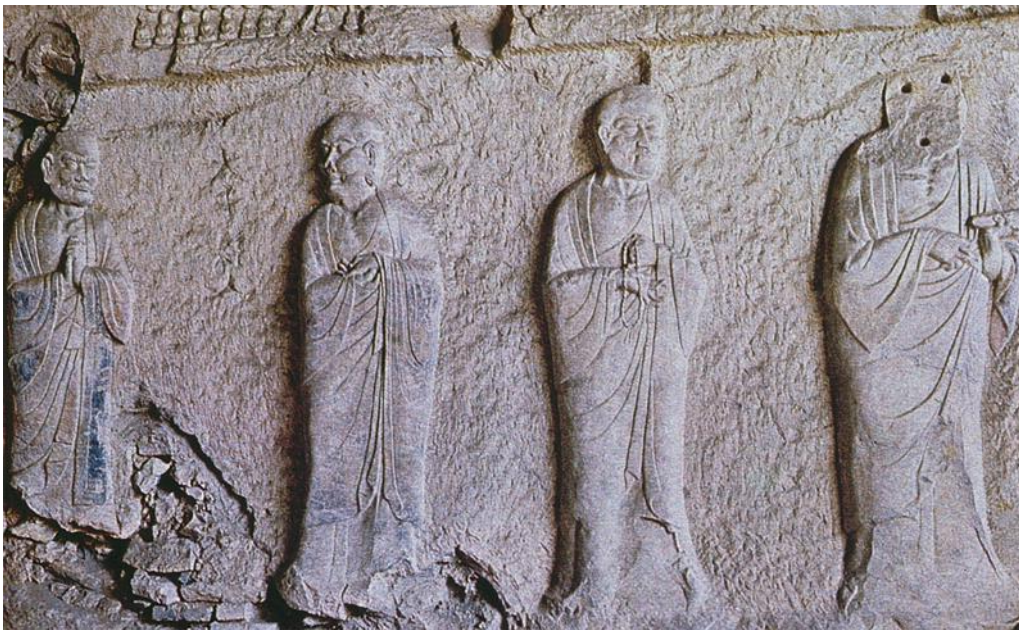


Fig. 2.61. *Patriarchs*. Kanjing temple 看經寺, Longmen Grotto 龍門石窟, Henan province. Tang dynasty, 732 CE. Limestone relief carving.



Fig. 2.62. *Patriarch Holding Flower*. Kanjing temple 看經寺, Longmen Grotto 龍門石窟, Henan province. Tang dynasty, 732 C.E. Limestone relief carving.



Fig. 2.63. *Patriarch with Walking Staff and Rosary*. Kanjing temple 看經寺, Longmen Grotto 龍門石窟, Henan province. Tang dynasty, 732 C.E. Limestone relief carving.



Fig. 2.64. *Eighteen Luohan*. Niche no. 24. Yuru Cave 玉乳洞 at Feilaideng 飛來峰 Hangzhou, Zhejiang province. Northern Song dynasty, 1026. Reprinted from Chang Qing, "Feilaideng and the Flowering of Chinese Buddhist Sculpture from the Tenth to Fourteenth Centuries," (Ph.D. diss., University of Kansas, 2005), 598.



Fig. 2.65. *Six Chan Patriarchs*. Niche no. 28. Yuru Cave 玉乳洞 at Feilaideng 飛來峰 Hangzhou, Zhejiang province. Northern Song dynasty, 1026. Reprinted from Chang Qing, "Feilaideng and the Flowering," 603.



Fig. 2.66. Attrib. Zhang Shangwen 張勝溫. Detail of the first Six *Luohan* from *A Long Roll of Buddhist Images* 大理國梵像卷. Dated between 1173-1176. Ink and color on silk. Full length of scroll approx. 51 feet. National Palace Museum, Taipei.



Fig. 2.67. Attrib. Zhang Shangwen 張勝溫. Detail of the first Six Chan Patriarchs from *A Long Roll of Buddhist Images* 大理國梵像卷. Dated between 1173-1176. Ink and color on silk. Full length of scroll approx. 51 feet. National Palace Museum, Taipei.



Fig. 2.68. *Exposed Brick Platform underneath Luohan #3W*. Thousand Buddha Hall, Lingyan temple. Photo by author.



Fig. 2.69. *Huineng*. Liurong monastery 六榕寺, Xinxing county, Guangdong province. Northern Song period, dated to 989. Bronze. Reprinted from Zhongguo meishu quanji bianji weiyuanhui 中國美術全集編輯委員會, ed. *Complete Collection of Chinese Art* 中國美術全集, vol. 5 Five Dynasties and Song dynasty sculpture (Beijing: Renmin meishu chubanshe, 1988), fig. 42.



Fig. 2.70. *Lacquered body of Huineng*. Nanhua Monastery 南華寺, Guangdong province. Possible 8th century dating. Mixed media, h. 80 cm.



Fig. 2.71. *Luohan* #3. Great Hall 大殿 at Baosheng Temple 保聖寺, Luzhi 甬直, Jiangsu province. Dated 1008-1016. Painted clay. Reprinted from Li Song 李松, ed. *Complete Collection of Painted Sculpture of China's Buddhist and Daoist Temples Vol. 2 Statues from Temples of the Five Dynasties and Song Period* 中國寺觀雕塑全集 2 五代宋寺觀造像 (Haerbin: Heilongjiang meishu chubanshe, 2005), 30.



Fig. 2.72. *Portrait sculpture of Hong Bian* 洪辯 (d. ca. 861). Cave 17, Mogao Grotto 莫高窟, Dunhuang 燉煌, China. Mid-to-late 9th century. Clay and polychrome.



Fig. 2.73. *Portrait of Lanqi Daolong* 蘭溪道隆 (1213-1278). Inscribed by the sitter, dated 1271. Kamakura period (1185-1333). Hanging scroll, colors on silk; 105 x 46.1 cm. Kenchōji, Kamakura. National Treasure.



Fig. 2.74. *Luohan* #23E. Thousand Buddha Hall, Lingyan temple. Ming dynasty (1368-1644), late 16th c. Photo by author.



Fig. 2.75. *Luohan Sculptural Set* (detail). Great Hall 大殿 at Baosheng Temple 保聖寺, Luzhi 角直, Jiangsu province. Dated 1008-1016. Painted clay. Reprinted from Li, *Complete Collection of Painted Sculpture*, 27.