

Supplemental Figure 4

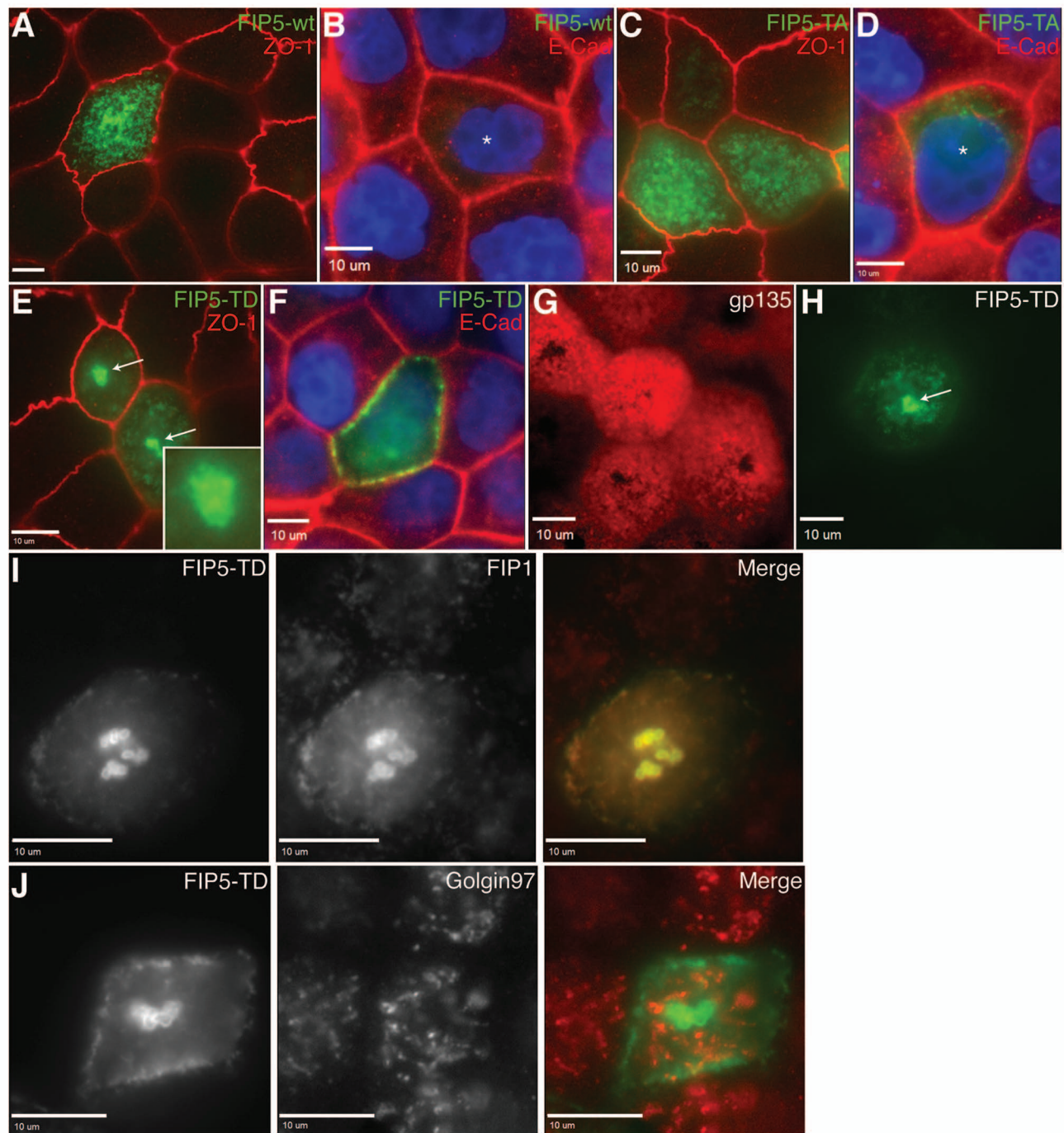


Fig S4. FIP5-T276 mutations affect the localization of FIP5 in polarized epithelial cells.

(A-H) Filter-grown MDCK cells expressing FIP5-GFP (A-B), FIP5-T276A-GFP (C-D) or FIP5-T276D-GFP (E-H) were fixed and stained with anti-ZO-1 (A, C, E), anti-E-Cadherin (B, D, F) or anti-gp135 (G) antibodies. Arrows point to enlarged apical endosomes containing FIP5-T276D-GFP. Asterisks mark nuclei. (I-J) FIP5-T276D mutant co-localized with recycling endosome marker FIP1 but not with Golgi marker Golgin97. Scale bars: 10 μ m.