

2014-06-17

NIH Public Access Policy Submission

Processing Map

Rosenzweig, Merle; Masters, Chase

<https://hdl.handle.net/2027.42/107424>

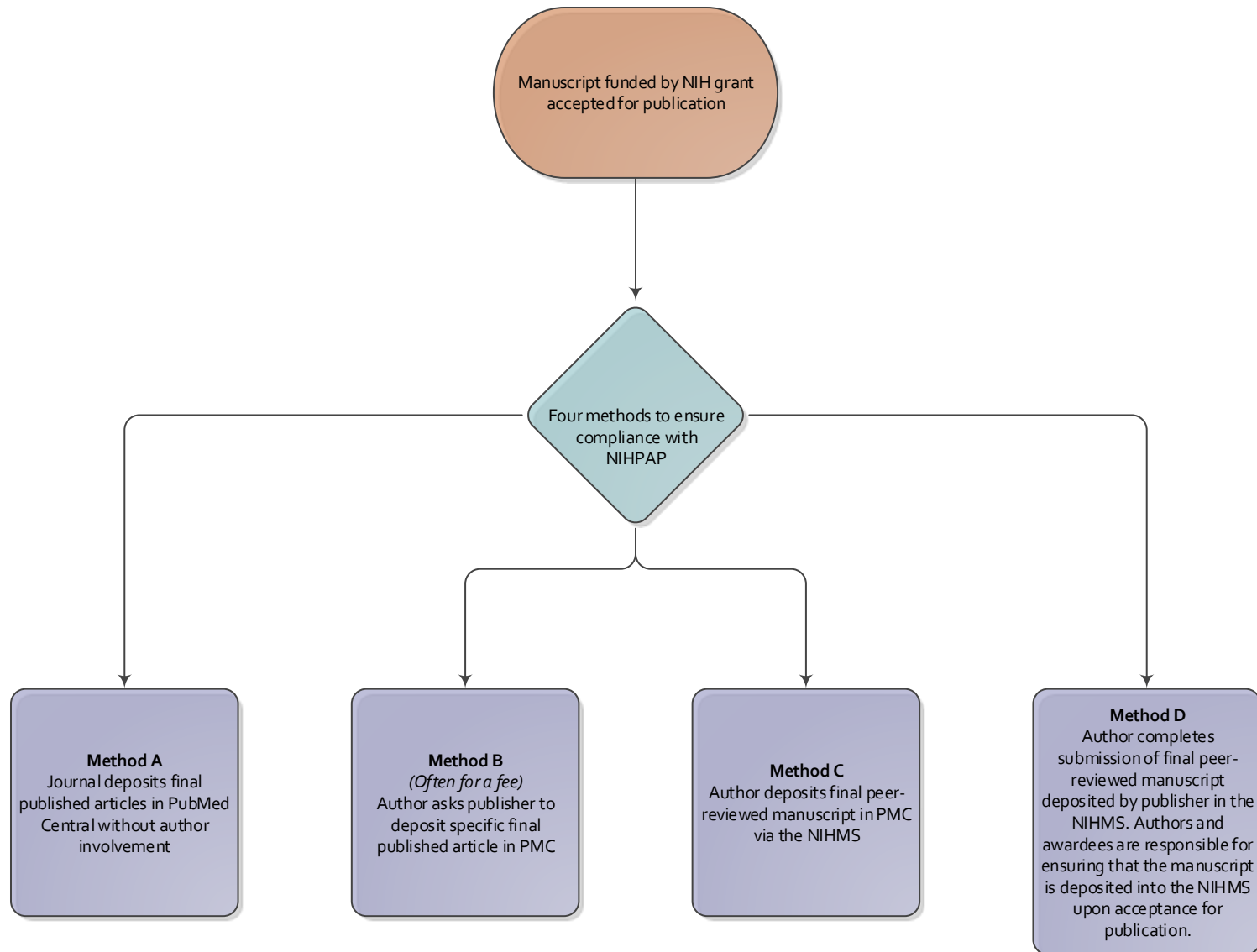
<http://creativecommons.org/licenses/by-nc-nd/3.0/us/>

Downloaded from Deep Blue, University of Michigan's institutional repository

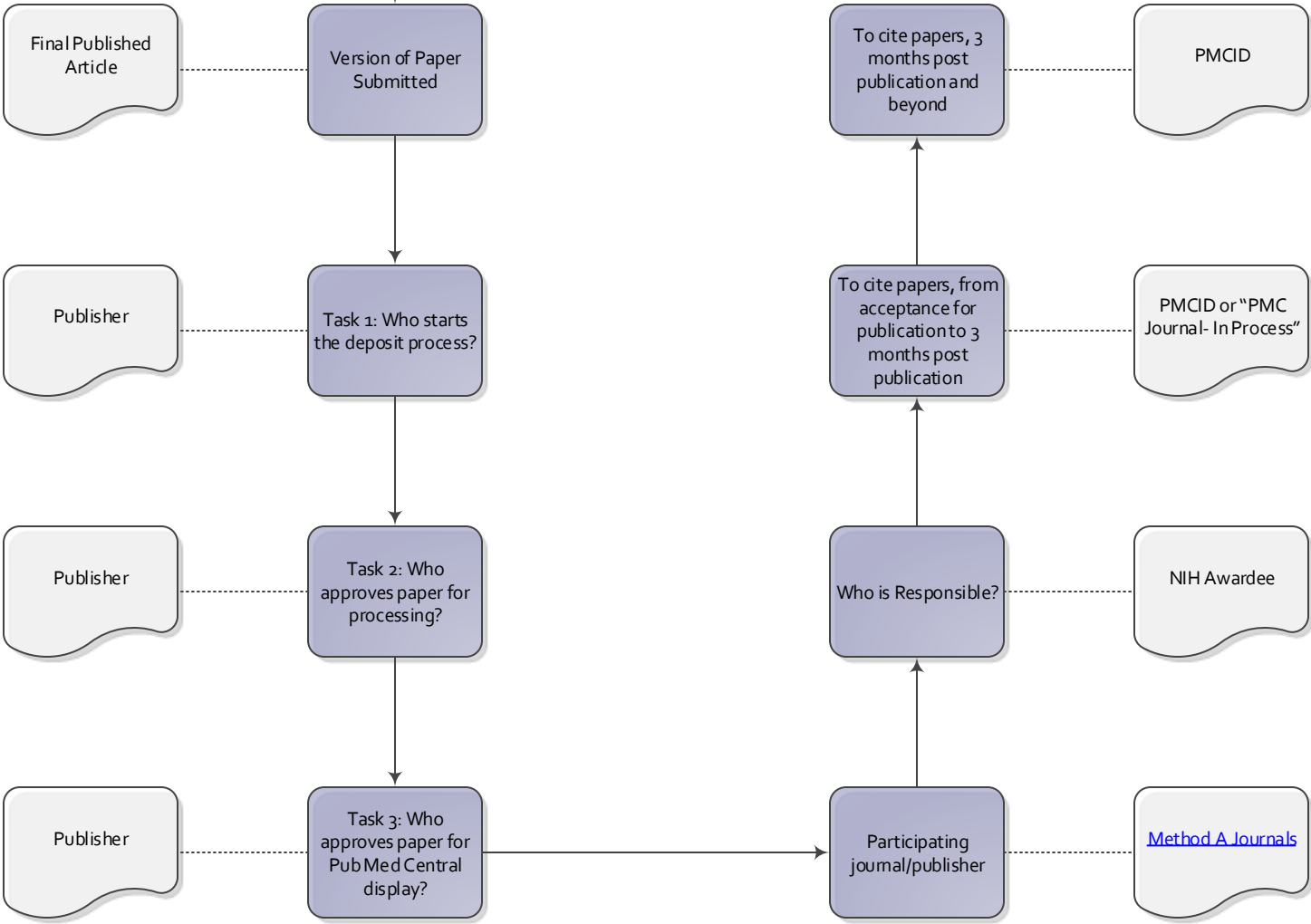
[The NIH Public Access Policy](#) (NIHPAP) ensures that the public has access to the published results of NIH funded research.

Submission Methods

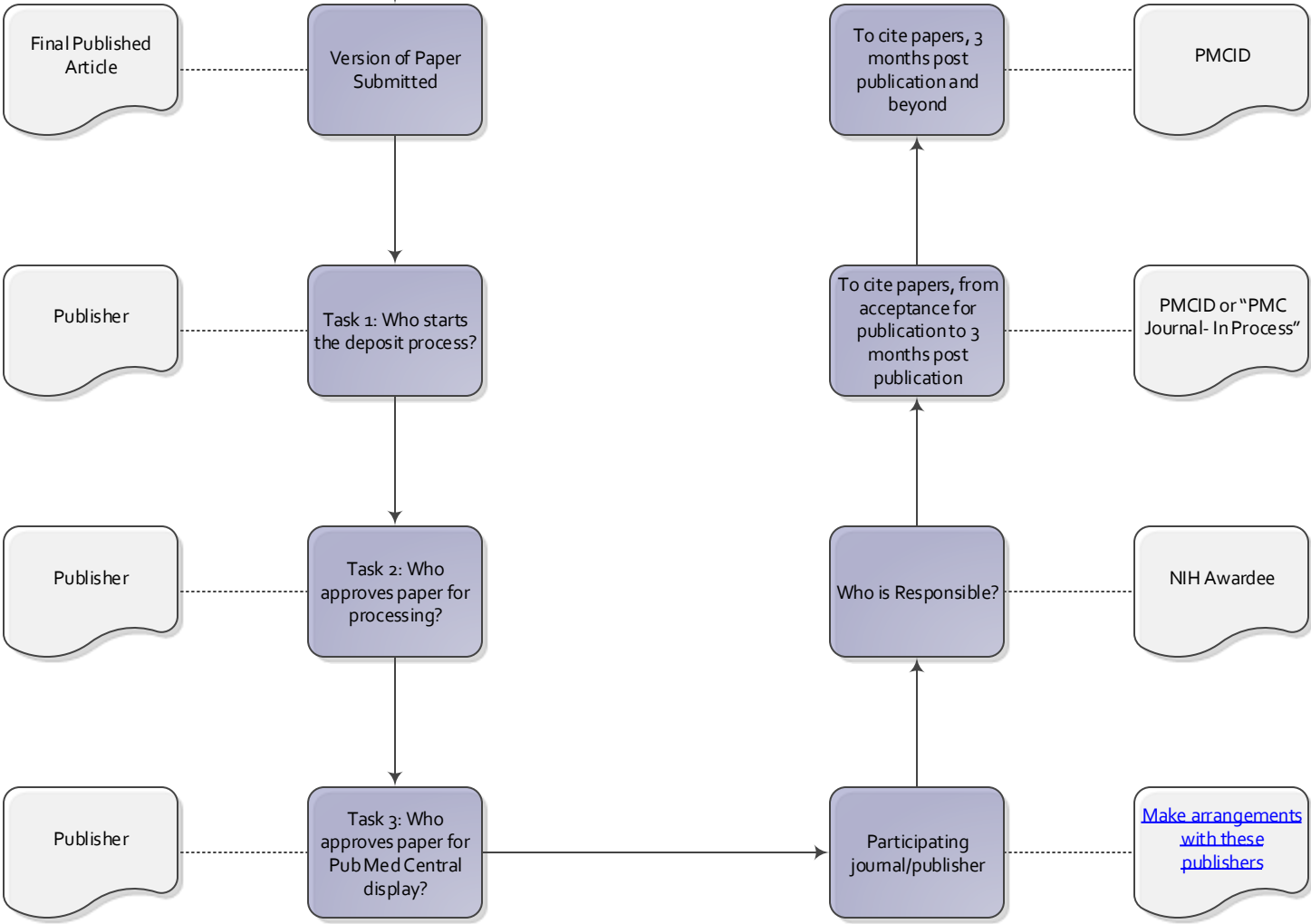
http://publicaccess.nih.gov/submit_process.htm



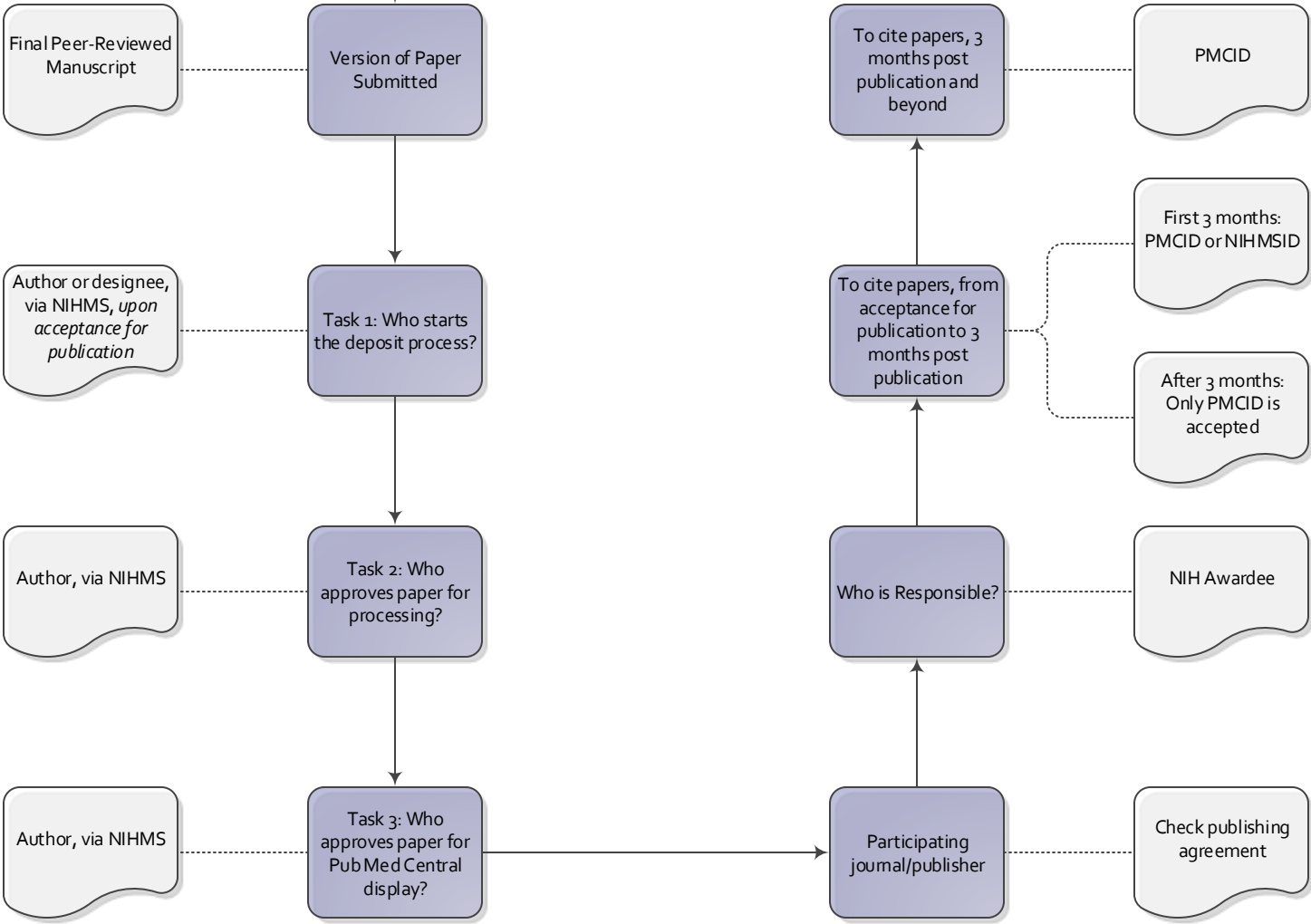
Method A
Journal deposits final published articles in PubMed Central without author involvement



Method B
(Often for a fee)
Author asks publisher to deposit specific final published article in PMC



Method C
Author deposits final peer-reviewed manuscript in PMC via the NIHMS



Method D
Author completes submission of final peer-reviewed manuscript deposited by publisher in the NIHMS. Authors and awardees are responsible for ensuring that the manuscript is deposited into the NIHMS upon acceptance for publication.

