

2014-12-16

NIH Public Access Policy Processing Map

Rosenzweig, Merle; Masters, Chase

<http://hdl.handle.net/2027.42/109721>



NIH Public Access Policy (NIHPAP) 101

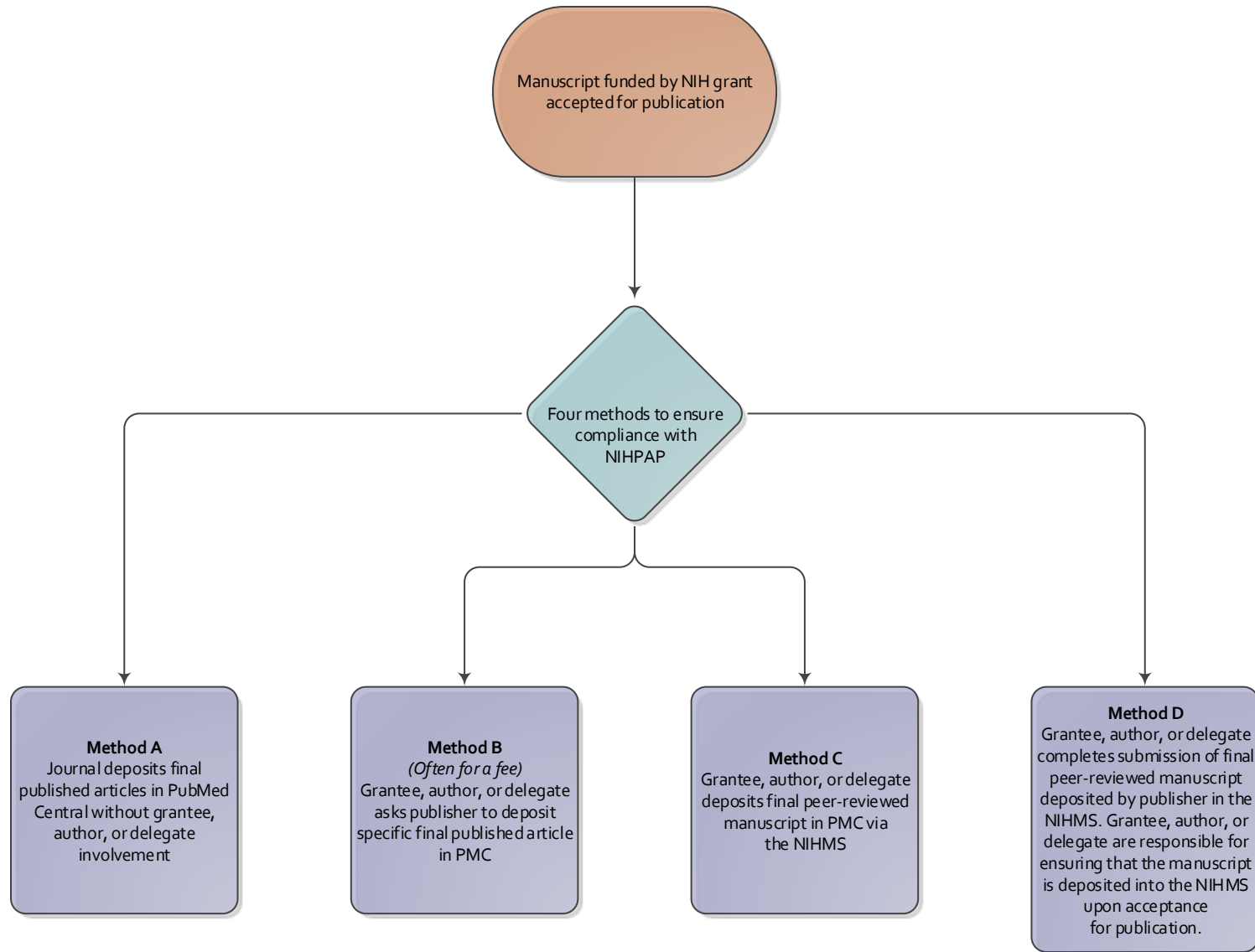
Table of Contents:

- [Submission Methods](#)
 - [Method A](#)
 - [Method B](#)
 - [Method C](#)
 - [Method D](#)
- [NIHMS](#)
- [My NCBI](#)

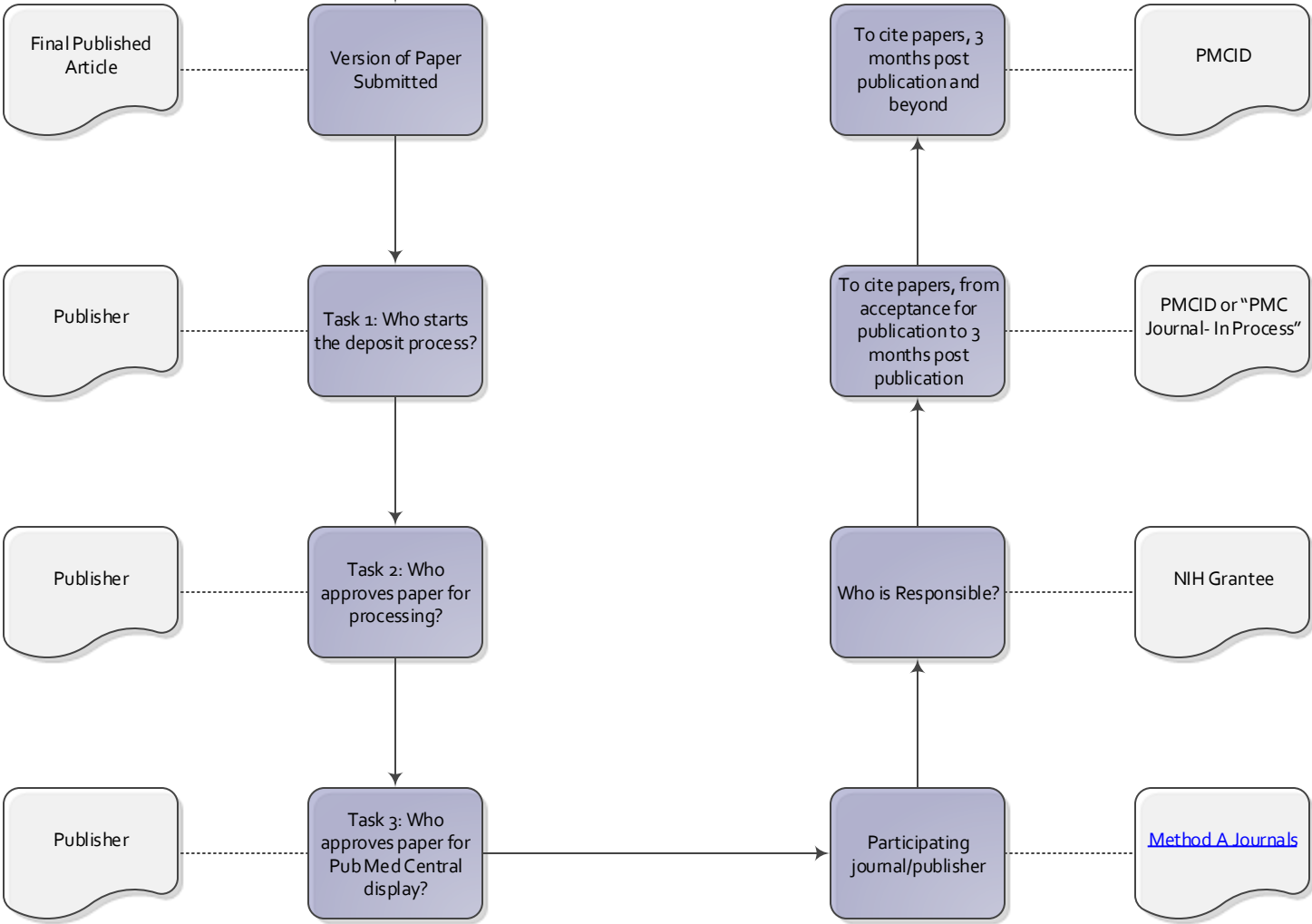
[The NIH Public Access Policy](#) (NIHPAP) ensures that the public has access to the published results of NIH funded research.

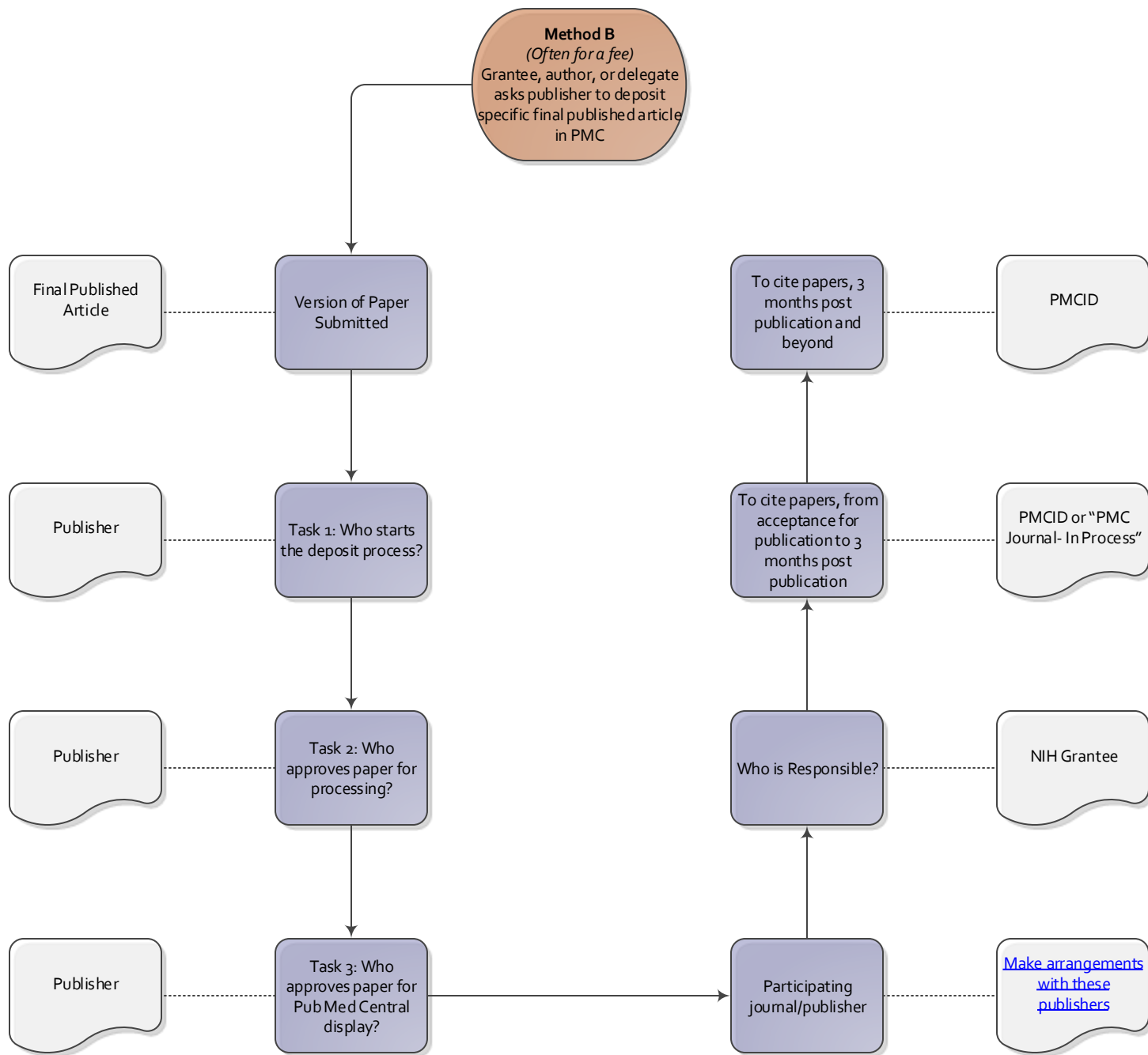
Submission Methods

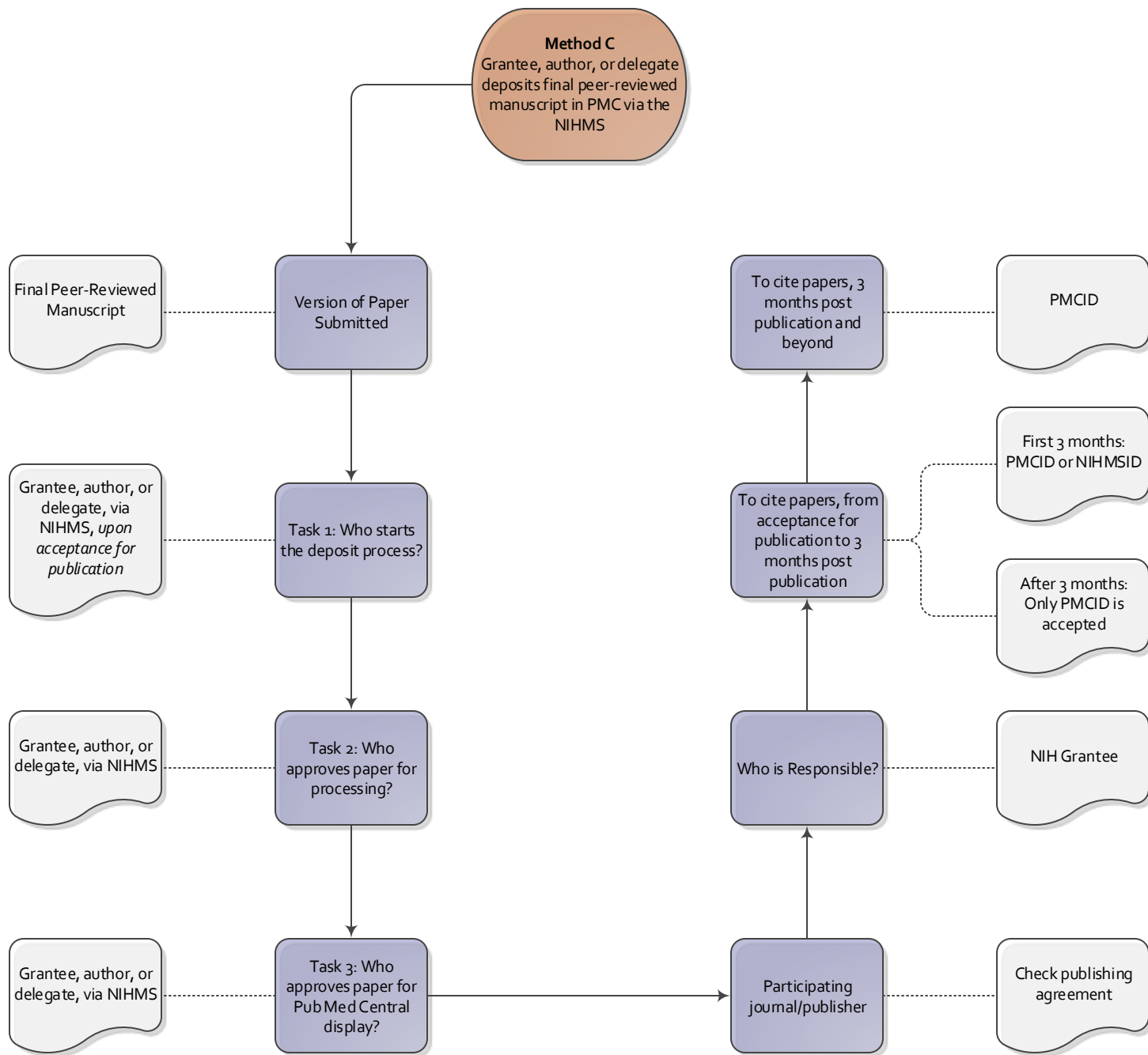
http://publicaccess.nih.gov/submit_process.htm



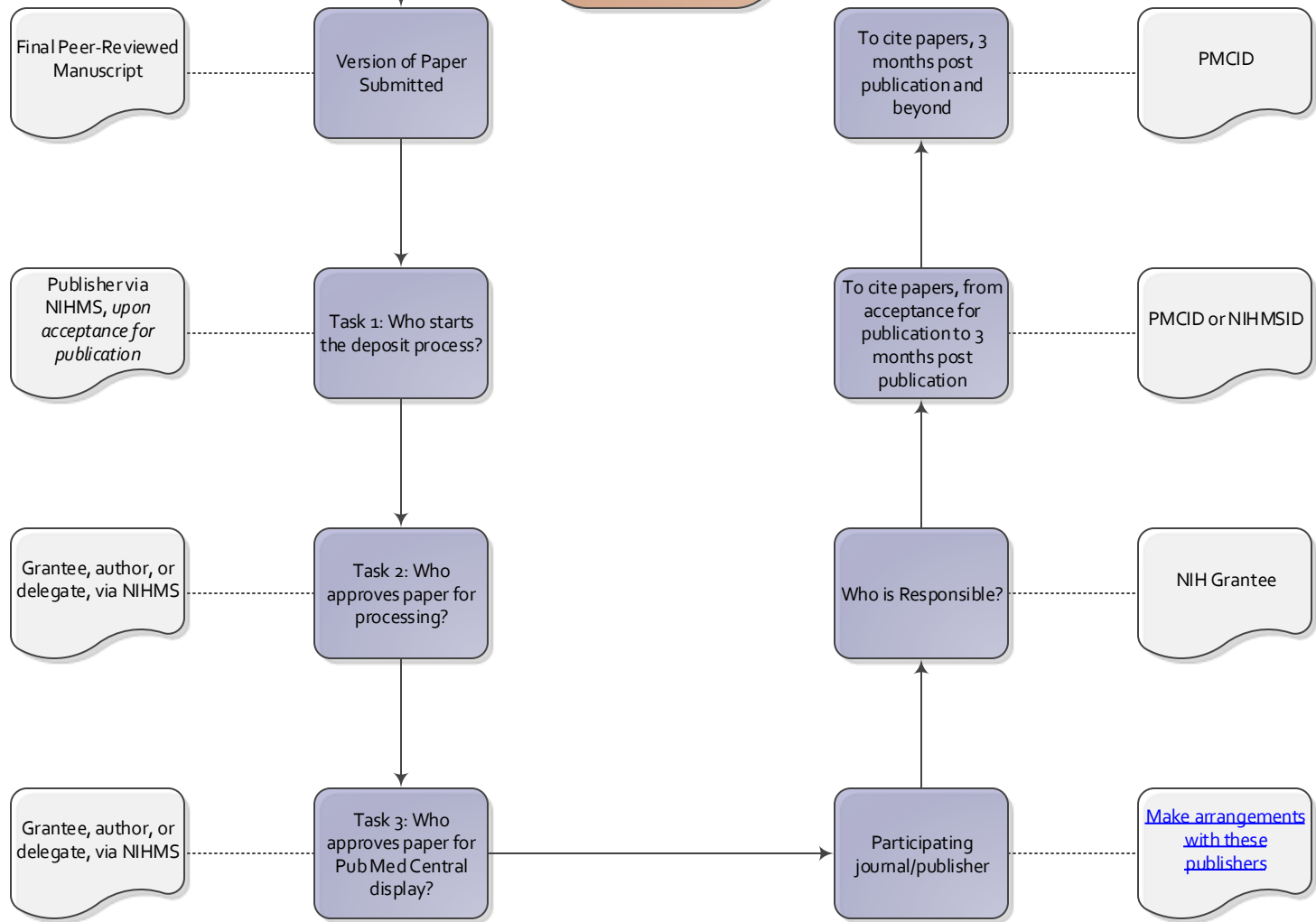
Method A
Journal deposits final published articles in PubMed Central without grantee, author, or delegate involvement

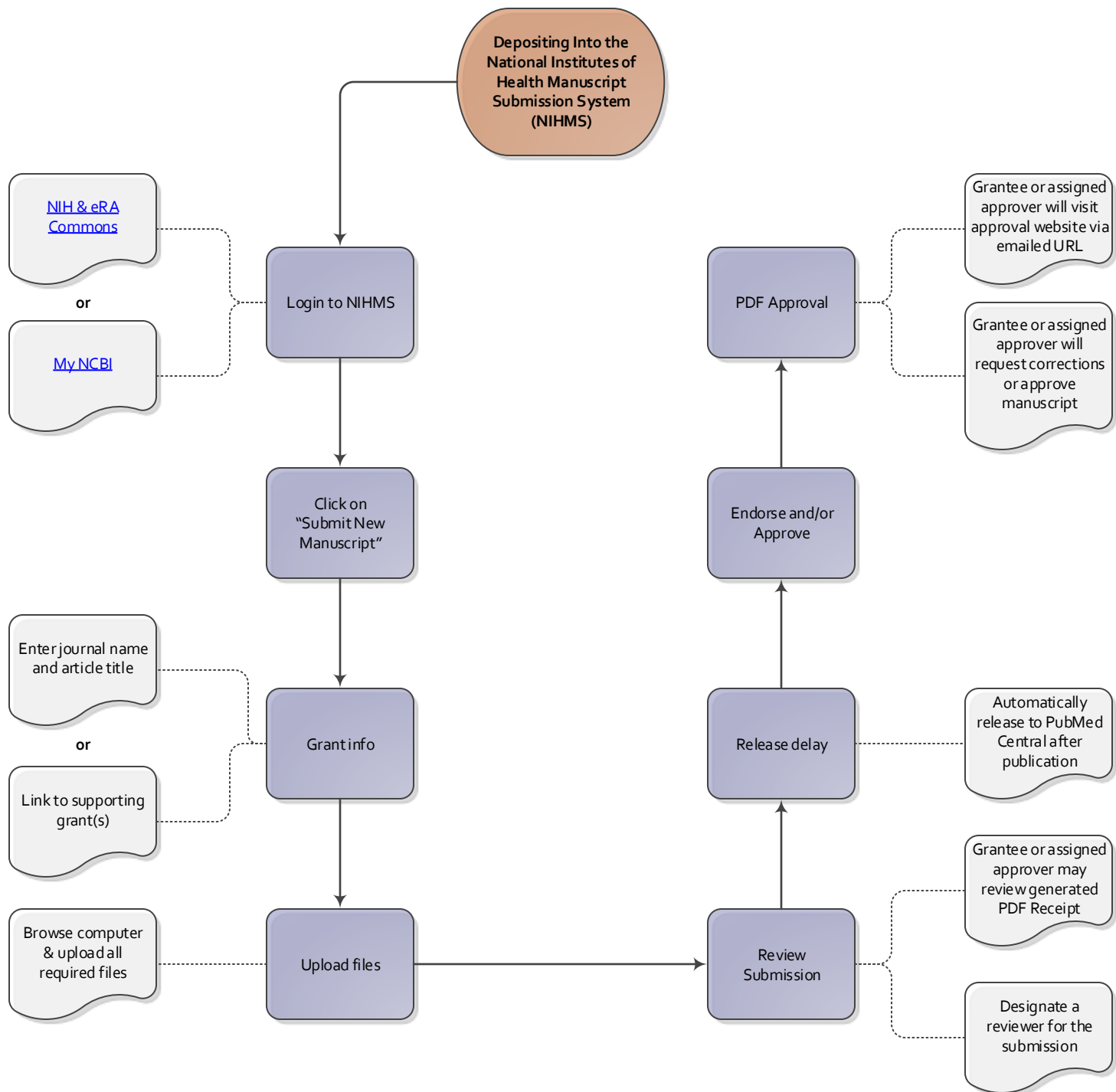






Method D
 Grantee, author, or delegate completes submission of final peer-reviewed manuscript deposited by publisher in the NIHMS. Grantee, author, or delegates are responsible for ensuring that the manuscript is deposited into the NIHMS upon acceptance for publication.





[My Bibliography in My NCBI](#) is to be used by eRA Commons users to manage their professional bibliographies, associate publications with their grant awards, and ensure compliance with the NIH Public Access Policy

