



Battling HIV in Rural South Africa

RANDY DOWDING

University of Michigan School of Social Work and Public Health



South Africa

South Africa, on the continent's southern tip, is bordered by the Atlantic Ocean on the west and by the Indian Ocean on the south and east. Its neighbors are Namibia in the northwest, Zimbabwe and Botswana in the north, and Mozambique and Swaziland in the northeast. The kingdom of Lesotho forms an enclave within the southeast part of South Africa, which occupies an area nearly three times that of California.

KwaZulu-Natal Province

- Sub-tropical region
- Third largest province in South Africa
- Population of 10million
- Ninety percent African
- Mostly rural – very high unemployment & poverty
- Highest HIV prevalence in the world

CAPRISA – Research Institute

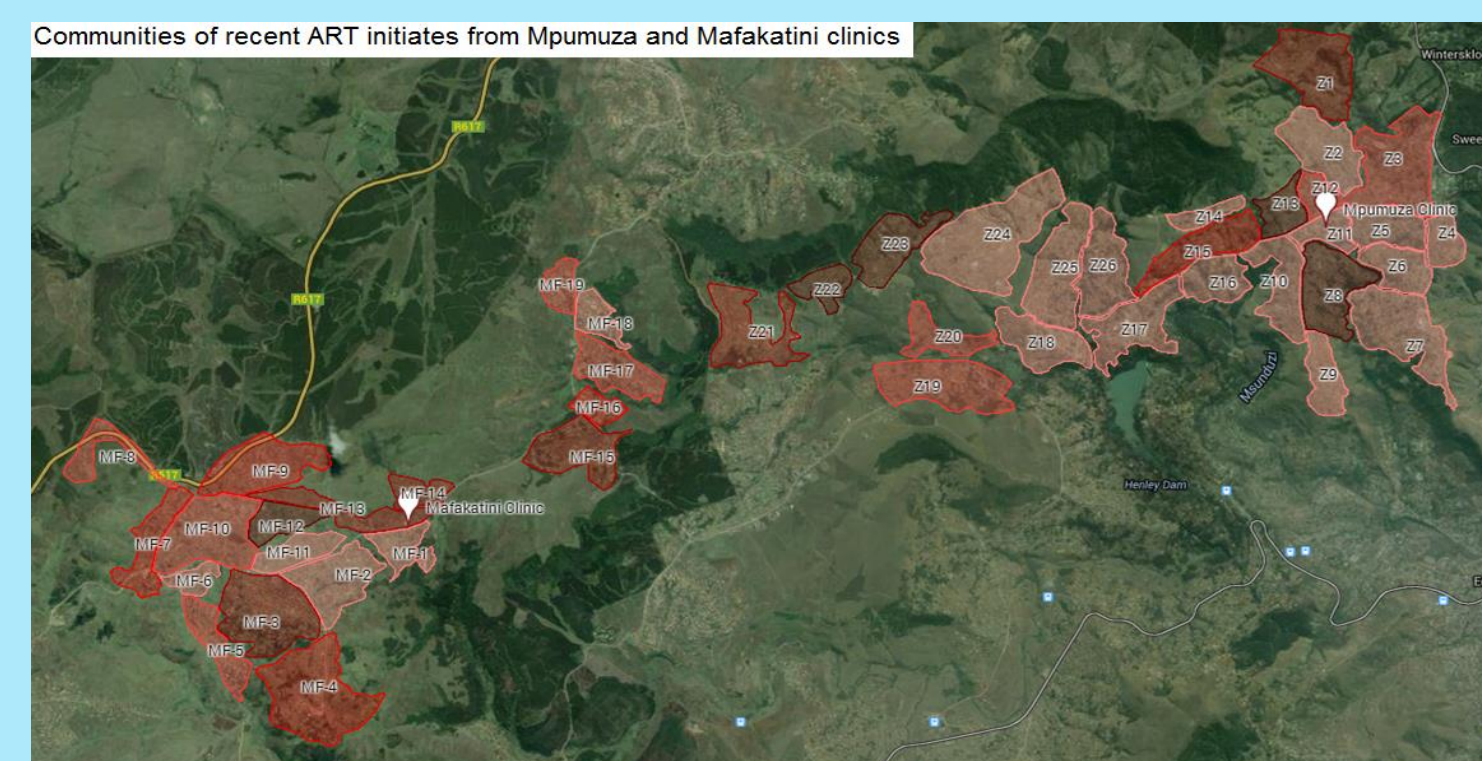
- Premier HIV/TB Research site in South Africa
- Established in 2002
- Funded by NIH, CDC and South Africa
- Published more than 300 manuscripts
- Fulbright-Fogarty International Research site

Project Coordinator - Vulindlela

- Largest home HIV Intervention in South Africa
- Focused on Adolescent HIV Prevalence
- Included Geo-Spatial Mapping of infections
- Behavioral intervention to match data
- Included clinical, behavioral and community
- Collaboration of more than 30 scientists

Outcomes

- Geo-Spatial mapping of infections
- Information about sex characteristics
- Community profiles around infection
- Age specific characteristics of HIV and TB
- Age gender friendly service characteristics
- More information about HIV and clinic distances



Skills Utilized

Skills important to social work that you utilized or developed during your project/placement:

- Evaluation
- Behavioral characteristics by sub-populations
- Community organization participation/inclusion

Classroom Connections

Coursework:

- SW 683 – Program Evaluation
- SW 707 – LGBTQ Issues
- SW 823 – International Social Systems
- SW 799 – CBI- Detroit Scholars Program

Lessons Learned

At the individual and community level, communicable diseases share many of the same characteristics globally. Recognizing this can have a profound effect on health outcomes both in the US and abroad.



Career Connections

One of the many lessons I learned from my global health experience is that my education at U of M prepares me well for work globally. During my internship I was able to contribute significantly to the project

Advice

Start your search early for a site and funds. Reach out to students who have accomplished similar destinations and efforts. Don't hesitate to contact staff to ask questions and for direction.

Acknowledgements

Funding provided by:

- SSW Global Special Studies
 - International Institute:
 - Raoul Wallenberg Scholarship
 - Isabel Bagramian Scholarship
 - SPH – Global Public Health Internship
 - SPH – HBHE Student Internship Program
- My parents and my daughter Elizabeth.