

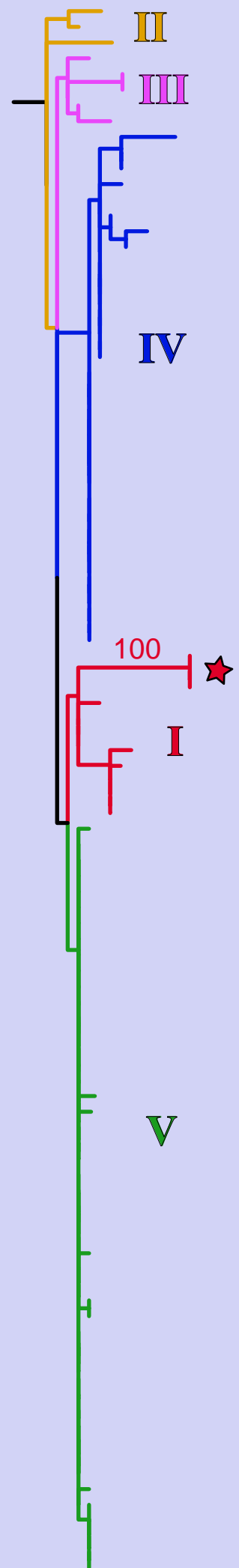
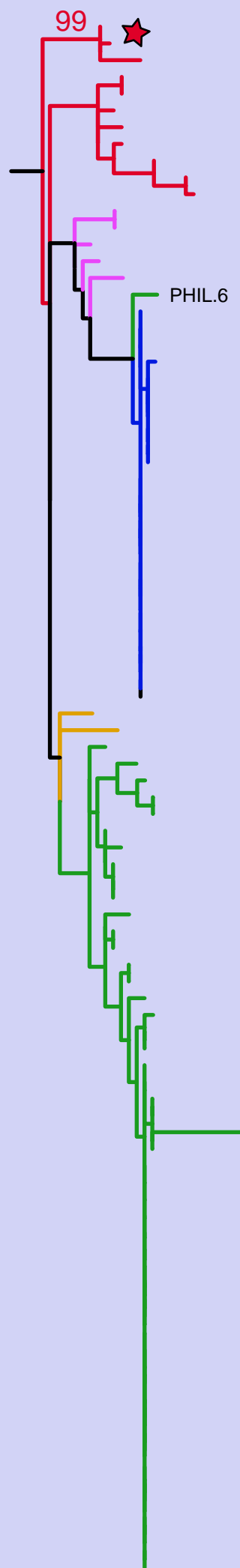
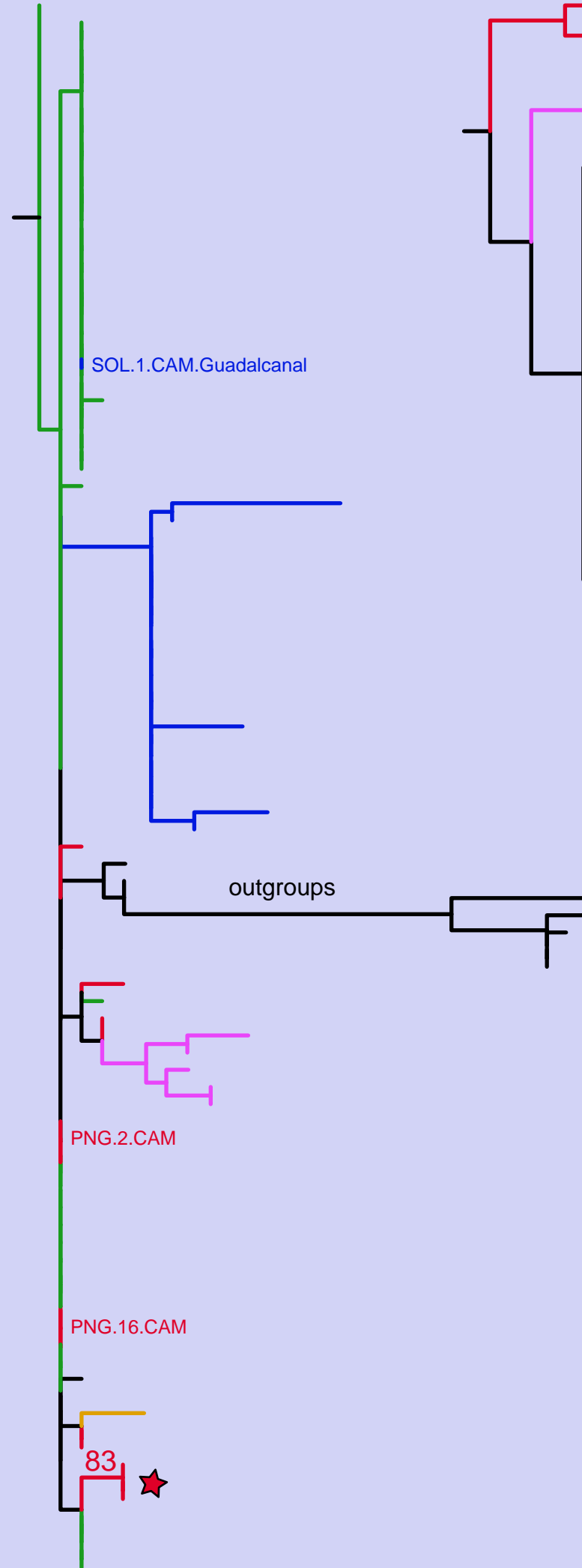
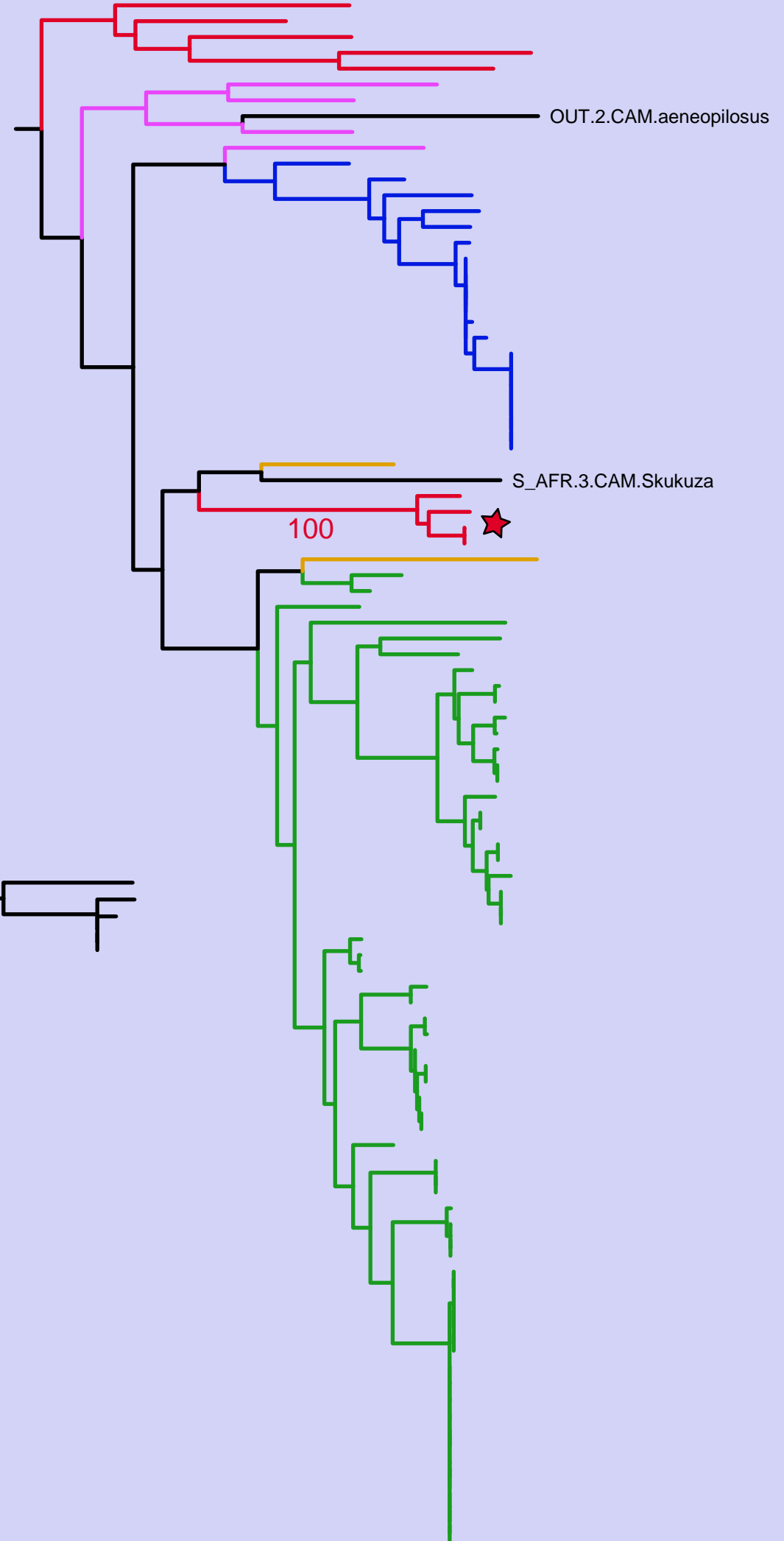
Wingless**LR****EF-1α****CytB**

Figure S3. Phylogenetic hypotheses recovered under maximum likelihood using single markers and all terminals that had each of those markers sequenced (except COI, which is the main driver of the any-one phylogenies), outgroups not shown, and *C. maculatus*-like clades (I–V) noted and colored. The clade containing the Hawai'ian and Floridian specimens is shown with a star and bootstrap values.