



RESEARCH ARTICLE

10.1002/2015RS005711

Power spectrum analysis of ionospheric fluctuations with the Murchison Widefield Array

Key Points:

- First spatiotemporal power spectrum analysis of ionospheric structures by MWA
- High sampling completeness and large FOV of MWA allow it to image ionosphere
- Detect plane wavelike structures, including TIDs and field-aligned ducts

Supporting Information:

- Movie S1
- Movie S2
- Movie S3
- Movie S4
- Text S1

Correspondence to:

S. T. Loi,  
sloi5113@uni.sydney.edu.au

Citation:

Loi, S. T., et al. (2015), Power spectrum analysis of ionospheric fluctuations with the Murchison Widefield Array, *Radio Sci.*, 50, 574–597, doi:10.1002/2015RS005711.

Received 20 MAR 2015

Accepted 3 JUN 2015

Accepted article online 18 JUN 2015

Published online 2 JUL 2015

Shyeh Tjing Loi<sup>1,2</sup>, Cathryn M. Trott<sup>2,3</sup>, Tara Murphy<sup>1,2</sup>, Iver H. Cairns<sup>1</sup>, Martin Bell<sup>2,4</sup>, Natasha Hurley-Walker<sup>3</sup>, John Morgan<sup>3</sup>, Emil Lenc<sup>1,2</sup>, A. R. Offringa<sup>2,5,6</sup>, L. Feng<sup>7</sup>, P. J. Hancock<sup>2,3</sup>, D. L. Kaplan<sup>8</sup>, N. Kudryavtseva<sup>3</sup>, G. Bernardi<sup>1,9,10,11</sup>, J. D. Bowman<sup>1,2,12</sup>, F. Briggs<sup>2,5</sup>, R. J. Cappallo<sup>1,3,13</sup>, B. E. Corey<sup>1,3,13</sup>, A. A. Deshpande<sup>1,4,14</sup>, D. Emrich<sup>3</sup>, B. M. Gaensler<sup>1,2,5,15</sup>, R. Goeke<sup>7</sup>, L. J. Greenhill<sup>1,10</sup>, B. J. Hazelton<sup>1,6,16</sup>, M. Johnston-Hollitt<sup>1,7,17</sup>, J. C. Kasper<sup>1,8,10,18</sup>, E. Kratzenberg<sup>1,3,13</sup>, C. J. Lonsdale<sup>1,3,13</sup>, M. J. Lynch<sup>3</sup>, S. R. McWhirter<sup>1,3,13</sup>, D. A. Mitchell<sup>2,4</sup>, M. F. Morales<sup>1,6,16</sup>, E. Morgan<sup>7</sup>, D. Oberoi<sup>1,9,19</sup>, S. M. Ord<sup>2,3</sup>, T. Prabu<sup>1,4,14</sup>, A. E. E. Rogers<sup>1,3,13</sup>, A. Rishi<sup>2,20</sup>, N. Udaya Shankar<sup>1,4,14</sup>, K. S. Srivani<sup>1,4,14</sup>, R. Subrahmanyan<sup>1,2,4,14</sup>, S. J. Tingay<sup>2,3</sup>, M. Waterson<sup>3,5</sup>, R. B. Wayth<sup>2,3</sup>, R. L. Webster<sup>1,2,21</sup>, A. R. Whitney<sup>1,3,13</sup>, A. Williams<sup>3</sup>, and C. L. Williams<sup>7</sup>

<sup>1</sup>Sydney Institute for Astronomy, School of Physics, University of Sydney, Sydney, New South Wales, Australia, <sup>2</sup>ARC Centre of Excellence for All-Sky Astrophysics, Sydney, New South Wales, Australia, <sup>3</sup>International Centre for Radio Astronomy Research, Curtin University, Bentley, Western Australia, Australia, <sup>4</sup>CSIRO Astronomy and Space Science, Epping, New South Wales, Australia, <sup>5</sup>Research School of Astronomy and Astrophysics, Australian National University, Canberra, ACT, Australia, <sup>6</sup>ASTRON Netherlands Institute for Radio Astronomy, Dwingeloo, Netherlands, <sup>7</sup>Kavli Institute for Astrophysics and Space Research, Massachusetts Institute of Technology, Cambridge, Massachusetts, USA, <sup>8</sup>Department of Physics, University of Wisconsin-Milwaukee, Milwaukee, Wisconsin, USA, <sup>9</sup>Square Kilometre Array South Africa, Cape Town, South Africa, <sup>10</sup>Harvard-Smithsonian Center for Astrophysics, Cambridge, Massachusetts, USA, <sup>11</sup>Department of Physics and Electronics, Rhodes University, Grahamstown, South Africa, <sup>12</sup>School of Earth and Space Exploration, Arizona State University, Tempe, Arizona, USA, <sup>13</sup>MIT Haystack Observatory, Westford, Massachusetts, USA, <sup>14</sup>Raman Research Institute, Bangalore, India, <sup>15</sup>Dunlap Institute for Astronomy and Astrophysics, University of Toronto, Toronto, Ontario, Canada, <sup>16</sup>Department of Physics, University of Washington, Seattle, Washington, USA, <sup>17</sup>School of Chemical and Physical Sciences, Victoria University of Wellington, Wellington, New Zealand, <sup>18</sup>Department of Atmospheric, Oceanic and Space Sciences, University of Michigan, Ann Arbor, Michigan, USA, <sup>19</sup>National Centre for Radio Astrophysics, Tata Institute for Fundamental Research, Pune, India, <sup>20</sup>National Radio Astronomy Observatory, Charlottesville, Virginia, USA, <sup>21</sup>School of Physics, University of Melbourne, Parkville, Victoria, Australia

**Abstract** Low-frequency, wide field-of-view (FOV) radio telescopes such as the Murchison Widefield Array (MWA) enable the ionosphere to be sampled at high spatial completeness. We present the results of the first power spectrum analysis of ionospheric fluctuations in MWA data, where we examined the position offsets of radio sources appearing in two data sets. The refractive shifts in the positions of celestial sources are proportional to spatial gradients in the electron column density transverse to the line of sight. These can be used to probe plasma structures and waves in the ionosphere. The regional (10–100 km) scales probed by the MWA, determined by the size of its FOV and the spatial density of radio sources (typically thousands in a single FOV), complement the global (100–1000 km) scales of GPS studies and local (0.01–1 km) scales of radar scattering measurements. Our data exhibit a range of complex structures and waves. Some fluctuations have the characteristics of traveling ionospheric disturbances, while others take the form of narrow, slowly drifting bands aligned along the Earth’s magnetic field.

1. Introduction

1.1. Physical Background

The ionosphere is the ionized component of the Earth’s atmosphere. It lies between ~50 and 1000km altitude, transitioning smoothly into the plasmasphere, which is a torus of fully ionized plasma extending up to several Earth radii [Singh et al., 2011]. At night, the electron density peaks near 300–400km [Luhmann, 1995; Solomon, 2010]. The ionosphere and plasmasphere are embedded with complex density structures that can cause the refraction and diffraction of radio waves [Darrouzet et al., 2009; Schunk and Nagy, 2009]. These have been studied for many decades with low-frequency radio interferometer arrays [Hewish, 1951; Bolton et al., 1953; Mercier, 1986; Jacobson and Erickson, 1992a; Jacobson et al., 1996; Helmboldt et al., 2012a; Helmboldt, 2014].

Coupling between the various layers of the Earth's neutral atmosphere and ionosphere occurs through electric fields, ion-neutral collisions, shear flows, and upward propagating acoustic-gravity waves (AGWs). These mechanisms, as well as the effects of thunderstorms, geomagnetic substorms, solar X-ray flares, and large seismic events can produce irregularities in the ionosphere [Röttger, 1978; Luhmann, 1995; Laštovička, 2006; Liu et al., 2011]. Many traveling ionospheric disturbances (TIDs) are AGWs, which typically have wavelengths of 100–1000 km and periods of minutes to hours [Hocke and Schlegel, 1996]. These have been observed to produce quasi-periodic shifts in the positions of radio sources as the waves propagate across the field of view [Bougeret, 1981].

Field-aligned density ducts are cylindrical enhancements/depletions in the plasmasphere with widths of 10–100 km [Angerami, 1970; Ohta et al., 1996]. These can extend down to ionospheric altitudes [Bernhardt and Park, 1977] and may form by the interchange of magnetic flux tubes under the influence of electric fields, e.g., those from thunderstorms [Park, 1971; Walker, 1978]. They have been reported to produce rapid variations in interferometer visibility phases as they drift relative to the background sources [Jacobson and Erickson, 1993; Hoogeveen and Jacobson, 1997a; Helmboldt and Intema, 2012].

### 1.2. Technical Background

The apparent angular offset in the positions of celestial radio sources (i.e., refraction) from their true coordinates results from the distortion of radio-wave phase fronts due to differences in the electron column density (total electron content, TEC) between separate lines of sight from radio sources to receivers [Thompson et al., 2001; Schunk and Nagy, 2009]. The angular offset is given by

$$\Delta\theta \approx -\frac{1}{8\pi^2} \frac{e^2}{\epsilon_0 m_e} \frac{1}{\nu^2} \nabla_{\perp} \text{TEC}, \quad (1)$$

where  $e$  and  $m_e$  are the electron charge and mass,  $\epsilon_0$  is the vacuum permittivity,  $\nu$  is the observing frequency, and  $\nabla_{\perp} \text{TEC}$  denotes the spatial gradient of the TEC transverse to the line of sight. The  $\nu^{-2}$  dependence implies that offsets are larger at lower frequencies, and the negative sign indicates that sources refract toward lower TEC. The refractive wandering of a source over an integration due to temporal variations in the TEC can cause smearing and apparent decreases in peak flux density [Kassim et al., 2007]. In addition, angular broadening and scintillation, which relate to the second spatial derivative of the TEC, occur when the angular sizes of density inhomogeneities are smaller than or comparable to the scattering angle [Lee and Jokipii, 1975a, 1975b; Rickett, 1977; Meyer-Vernet, 1980; Meyer-Vernet et al., 1981].

Methods for probing the ionosphere with radio waves include (1) ionospheric sounding, where the timing of broadband pulse reflections yields the vertical TEC profile [Munro, 1950; Reinisch, 1986; Lei et al., 2005]; (2) radar scattering, where powerful narrowband pulses reveal small-scale TEC irregularities [Gordon, 1958; Larsen et al., 2007]; (3) Global Positioning System (GPS) satellite measurements, where dual-frequency delays yield the absolute TEC along given lines of sight [Mannucci et al., 1998; Lee et al., 2008]; (4) interferometer arrays, where TEC gradients are inferred from visibility phase fluctuations [Hewish, 1951; Hamaker, 1978]; and (5) satellite-borne beacon receivers, which measure the TEC based on differential delays of signals from the ground and other satellites [Bernhardt and Siefring, 2006; Bernhardt et al., 2006]. Radar scattering can detect structures 1–10m in size, over a region the width of the illuminating beam (several kilometers). For GPS observations, the coverage and resolution depend on the distribution of ionospheric pierce points, which are the points where the lines of sight to ground stations intersect the ionosphere. Global GPS TEC maps with  $\sim 100$  km resolution are publicly available, e.g., from the Madrigal database [Rideout and Coster, 2006]. Instruments aboard satellites in low-Earth orbit receiving signals from ground stations, such as the Scintillation and TEC Receiver in Space (CITRIS) instrument, have enabled the identification of scintillation-causing irregularities on scale sizes between 100m and 1 km, and TEC measurements at a spatial resolution of 7.5 km along the orbit path [Siefring et al., 2011]. However, these do not currently provide as global a coverage as GPS.

Many radio interferometer studies of the ionosphere have involved tracking a single bright source and measuring the phase fluctuations on each baseline (where a baseline refers to a pair of interferometric receivers) as a function of time [Hamaker, 1978; Jacobson and Erickson, 1992b; Coker et al., 2009; Helmboldt et al., 2012a, 2012b]. The ionospheric phase  $\phi$  ( $\propto \Delta\theta$ ) is proportional to the difference in TEC between the lines of sight to the two receivers, so this can be used to probe temporal variations in the differential TEC on spatial scales corresponding to the projection of the array onto the ionosphere. We will refer to this approach as the *antenna-based* method.

In antenna-based studies, the spatial sampling pattern is given by the array configuration, resulting in direction-dependent spatial resolution and a poor impulse response for power spectrum analysis of spatial features with sparse arrays [e.g., *Helmboldt and Intema*, 2014]. Wide field instruments that are able to observe many celestial radio sources simultaneously can overcome these limitations because of the large number of isotropically distributed pierce points. We will refer to the approach of analyzing source position shifts rather than antenna phases as the *field-based* method. There have been several field-based studies of the ionosphere that used the Very Large Array (VLA) at 74MHz [*Kassim et al.*, 1993]. These include the work of *Cohen and Röttgering* [2009], who conducted a statistical analysis of pairwise differential offsets (3–8 sources in a FOV) and *Helmboldt and Intema* [2012], who performed a spectral analysis of the position offsets of 29 bright sources in a single FOV and detected groups of wavelike disturbances. A combination of antenna- and field-based techniques has been used to conduct a climatological study of ionospheric irregularities using the VLA, characterizing structure on scales of several to hundreds of kilometers [*Helmboldt et al.*, 2012c].

The Murchison Widefield Array (MWA) [*Lonsdale et al.*, 2009; *Bowman et al.*, 2013; *Tingay et al.*, 2013] is a 128-element, low-frequency (80–300MHz) dipole array located at the Murchison Radio-astronomy Observatory (MRO) in Western Australia. Each receiver element, called a “tile”, comprises 16 dual-polarization bow tie dipole antennas arranged in a  $4 \times 4$  configuration. The 128 tiles are spread over a 3 km wide area in a pseudo-random but centrally condensed configuration, yielding a very dense instantaneous  $u, v$  coverage which gives it an excellent snapshot imaging capability. It has a  $\sim 30^\circ$  wide FOV, enabling it to image a patch of the ionosphere about 150 km across (assuming an ionospheric altitude of 300 km). Over 1000 unresolved point sources are typically visible in a single 2 min integration, yielding pierce point separations of 1–10 km. With a high imaging cadence of up to 0.5s (the cadence at which the raw visibilities are stored, which sets the minimum integration time of each snapshot), the MWA enables us to study ionospheric structures and dynamics on regional scales at high spatiotemporal resolution. This complements the global scales and lower spatial resolutions of GPS measurements and the highly localized probing of radar scattering experiments. Airglow imaging [*Makela et al.*, 2006; *Shiokawa et al.*, 2013] can achieve widefield coverage similar to the MWA, but its reliance on optical wavelengths restricts operations to cloudless and moonless nights. Radio telescopes suffer no such limitations; radio observations can even be conducted in the daytime. Furthermore, airglow measurements are restricted to lower altitudes, whereas radio interferometers can detect irregularities over large altitude ranges up to high altitudes (in the topside region and plasmasphere) which are otherwise difficult to access from the ground [*Jacobson et al.*, 1996; *Loi et al.*, 2015].

The advent of sensitive, low-frequency, widefield radio instruments such as the MWA, the Low-Frequency Array (LOFAR) [*van Haarlem et al.*, 2013], and the Long Wavelength Array [*Ellingson et al.*, 2009] gives us an opportunity to study the ionosphere in unprecedented spatial detail and breadth. Characterization of the ionosphere is relevant not only to ionospheric science but also to radio astronomy, because fluctuations in position and flux density can complicate the cross matching and classification of radio sources. The ionosphere can also cause time- and position-dependent distortions of the telescope point-spread function (PSF), demanding nontrivial calibration and deconvolution schemes [*Mitchell et al.*, 2008; *Intema et al.*, 2009; *Bernardi et al.*, 2011]. Information about the expected spatial and temporal scales of these fluctuations is important for designing and optimizing algorithms that identify and remove ionospheric distortions.

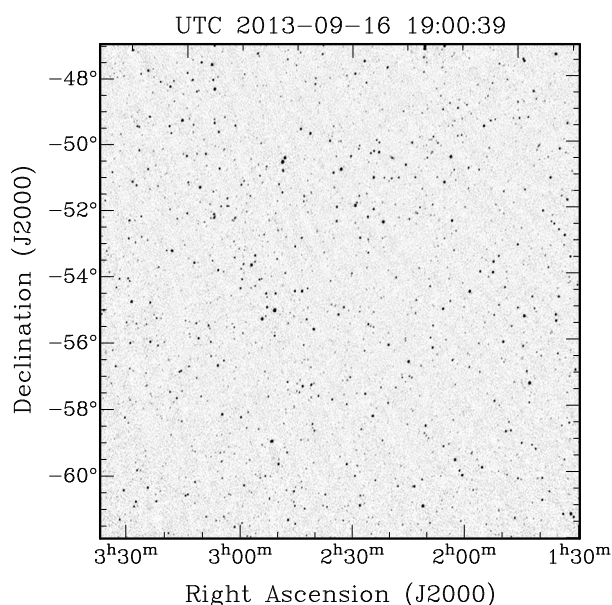
### 1.3. This Work

We present the results of a power spectrum analysis of ionospheric fluctuations observed using the MWA. We analyzed the position offsets of point sources appearing in two MWA data sets from the commensal Epoch of Reionization (EoR) Transients Survey at 183MHz (G0005; PIs: P. J. Hancock, L. Feng, and N. Kudryavtseva) and the MWA Transients Survey (MWATS) at 154 MHz (G0001; PI: M. Bell), hereafter data sets A and B, respectively, as a function of sky position and time.

This paper is structured as follows. In section 2, we describe the data reduction process and our approach to computing the power spectra. In section 3, we demonstrate this on MWA data from the two aforementioned data sets. We interpret the observed features in section 4. Finally, we conclude in section 5.

## 2. Method

All MWA data mentioned in this work were obtained at night. This work uses radio images synthesized using the entire array (field-based method), rather than information from individual baselines (antenna-based method). The whole MWA can be considered as a single receiver, and the number of pierce points is equal to



**Figure 1.** Example snapshot image taken by the MWA (data set B, epoch 53), zoomed in to the central one third so that individual sources are visible. Each of the  $\sim 10^3$  celestial radio sources in each snapshot image contributes a pierce point. The intensity is displayed on a linear greyscale.

### 2.1. MWA Data Reduction

The process of synthesizing an image from interferometric visibilities involves a Fourier inversion of the spatial coherence function of the electric field, which is sampled discretely by the individual baselines [Thompson *et al.*, 2001]. Prior to the inversion step it is often necessary to excise (“flag”) unusable portions of the data, for example, those contaminated by radio-frequency interference (RFI) and also to calibrate for varying instrumental gains, which might arise for example from thermally induced changes in cable lengths. Several algorithms exist for performing instrument gain calibration. These include phase referencing [Fomalont and Perley, 1999], which involves observing a well-understood source of emission (a calibrator) and solving for the antenna gains that minimize the overall differences between measured and expected values, and self-calibration [Pearson and Readhead, 1984; Cornwell and Fomalont, 1999], which exploits a set of closure relations that relate the gains of each closed loop of antennas in an overdetermined fashion to solve for individual antenna gains.

Fourier transforming the gridded and weighted visibilities produces an image (the “dirty” image) that is the true sky brightness distribution convolved with the telescope PSF. The shape of the PSF is determined by the sampling pattern of the spatial coherence function (the  $u, v$  coverage) and, in general, has a complicated shape. Various deconvolution algorithms exist for recovering the true brightness distribution from a dirty image. Pointlike (unresolved) sources, such as those considered for analysis here, can be deconvolved effectively using the CLEAN algorithm [Högbom, 1974]. This involves the iterative subtraction of a scaled version of the PSF from local intensity maxima, until certain convergence criteria are satisfied, to obtain a set of CLEAN components representing the point sources. These components are reconvolved with a two-dimensional Gaussian whose width is representative of the angular resolution of the telescope and added back to the residuals of the deconvolution step, yielding an idealized approximation to the sky brightness distribution (the “restored” image).

The two data sets discussed in this work were originally obtained by the MWA for different scientific purposes (neither ionospheric), under different observing strategies and reduced by separate science teams using different pipelines. We have appropriated these data for the current work; these differences are not intentional and are beyond the scope of control of our study.

Data set A was taken on 5 February 2014 at 183MHz with 30.72MHz bandwidth, in “drift-and-shift” mode, in which the MWA analog beamformers point toward a new azimuth and elevation approximately every half

the number of celestial radio sources visible at any given epoch (e.g., Figure 1). The antenna-based method, which needs to observe a single bright source that dominates the visibilities, is unsuitable for the MWA because of its large FOV and thereby large number of bright sources in any given field. Since the position offset of a source in an image formed using all 128 tiles is related to the average ionospheric phase over all baselines, the field-based approach effectively smooths structure in the ionosphere by a window of diameter equal to the physical dimensions of the MWA. The fairly compact size of the array (longest baseline  $\sim 3$  km) means that our angular resolution for ionospheric work is about  $0.6^\circ$ , comparable to the average angular separation of point sources at typical instrument sensitivities. This is about an order of magnitude lower than the angular resolution of the images, which is set by the size of the MWA synthesized beam ( $\sim 2-3$  arc min).

**Table 1.** Parameters for the Two MWA Data Sets

Parameter	Data Set A	Data Set B
Central frequency (MHz)	183	154
Bandwidth (MHz)	30.72	30.72
Polarization	Stokes I	Stokes I
Calibrator	3C444	PKS 2356–61
No. of snapshots	38	77
Missing data	None	Snapshots 57 and 61
Snapshot cadence (min)	2	6
Integration time per snapshot (s)	112	112
Span of observations (h)	1.3	8
UTC start	5 Feb 2014 15:13:51	16 Sep 2013 13:30:39
UTC end	5 Feb 2014 16:29:03	16 Sep 2013 21:24:39
AWST <sup>a</sup> start	5 Feb 2014 23:13:51	16 Sep 2013 21:30:40
AWST end	6 Feb 2014 00:29:03	17 Sep 2013 05:24:40
LST start	08:03:18	21:00:00
LST end	09:18:43	04:55:19
Pointing center (J2000)	RA, Dec = 150°, –24.8°	Dec = –55.0° along meridian
Pixel resolution (arc sec)	45	45
Synthesized beam FWHM (arc sec)	119	130
Visibility time resolution (s)	4	1
Visibility frequency resolution (kHz)	40	160

<sup>a</sup>Australian Western Standard Time (UTC +8).

hour and a consistent patch of sky then drifts through the FOV. This minimizes the number of pointings used, while still tracking the same patch of sky. Two minute snapshots were continuously taken of the same patch of sky over the observing duration, which was centered near local midnight (see Table 1 for details).

Known failed antennas were flagged, comprising 12% of the baselines. The data were flagged for RFI using the automated flagging routine AOFLAGGER [Offringa *et al.*, 2012], removing 1% of the visibilities. They were time averaged from 0.5s to 4s and were not smoothed from their native 40kHz frequency resolution. The data were calibrated from an observation of 3C444 (RA = 22<sup>h</sup>14<sup>m</sup>25.752<sup>s</sup>; Dec = –17°01′36.29″), assuming a point-source model. This has a flux density of 67Jy (1 jansky = 10<sup>–26</sup> W m<sup>–2</sup> Hz<sup>–1</sup>) and a spectral index of –1.0 at 183MHz [Hurley-Walker *et al.*, 2014], sufficient to dominate the visibilities and produce a set of per-channel, per-polarization, per-antenna complex gains.

After applying these gains, the data were imaged using multifrequency synthesis across all 30.72MHz of bandwidth using WSCLEAN [Offringa *et al.*, 2014], down to the first negative CLEAN component. This initial model was Fourier transformed to produce a model visibility set. These were then applied in one round of self-calibration to obtain a single solution for the amplitude and phase of each antenna over the whole observing interval. This correction is position independent and time independent: it should have no effect on the relative positions of the field sources and should only act to reduce instrumental errors. Note that unlike for conventional instruments with much narrower fields of view, solely antenna-based corrections are ineffective at removing ionospheric phases from MWA data, because its wide FOV implies that the ionosphere cannot be treated as locally uniform within each FOV (and therefore, that antenna and ionospheric phases are nondegenerate). The compact size of the MWA ensures that the effective antenna-based ionospheric phasor, which is a visibility-weighted average of celestial source ionospheric phasors over the FOV, is almost identical for each antenna thus allowing instrumental errors to dominate antenna-based phase differences.

The data were then imaged in four 7.68MHz subbands. The pixel resolution in all imaging steps was 0.75′ and imaging included the entire FOV down to the first null of the primary beam (full width at first null ~50°). This yielded images of size 5000 × 5000 pixels. The images were produced in instrumental Stokes (the E-W dipole response, N-S dipole response, and the cross terms). Using a model of the MWA primary beam [Sutinjo *et al.*, 2014], these instrumental polarizations were then combined to produce Stokes I images for onward analysis.

Data set B was obtained on 16 September 2013 at 154MHz over a 30.72MHz bandwidth using drift-scan observations at a declination of  $-55.0^\circ$  on the meridian. A 2 min snapshot was obtained every 6 min at this declination for an entire night of observations (see Table 1 for details). These data were flagged for RFI (using AOFLAGGER) and known problematic tiles. They were then averaged by a factor of 2 in time and 4 in frequency to yield a time resolution of 1s and a frequency resolution of 160kHz.

Frequency-dependent and time-independent calibration solutions as a function of tile and polarization were derived from an observation of PKS 2356–61 using a source model extrapolated from 843MHz [Mauch *et al.*, 2003] and applied to all target observations. This has a peak flux density of 30.6Jy (integrated flux density of 114.6Jy) at 154MHz and a spectral index of  $-0.85$ . No self-calibration was performed on this data set. The full-bandwidth data (30.72MHz) were then imaged and deconvolved using the WSCLEAN algorithm [Offringa *et al.*, 2014] to yield images of size  $3072 \times 3072$  pixels, the pixel size being  $0.75'$ . The data were CLEANed up to a maximum of 20,000 iterations. The full 30.72MHz bandwidth was imaged. For each observation, images for two instrumental polarizations (the N-S and E-W dipole responses) were corrected for the primary beam and then combined (for details, see Offringa *et al.* [2014]) to produce a Stokes I image.

## 2.2. Source Extraction and Selection

We chose data set A for discussion in this work because the sources within it exhibited a moderately large root-mean-square (RMS) amplitude of position shifts, this being 19arc sec on average and high compared to other data sets (characteristic RMS amplitude of 10–20arc sec at similar frequencies). This is smaller than the pixel size (45arc sec) and the synthesized beam FWHM (119arc sec at 183MHz). We used the source finder AEGEAN [Hancock *et al.*, 2012] to extract sources from the images, obtaining 1300–2100 sources per snapshot for a clip level of  $5\sigma$ . Candidate sources were identified by AEGEAN as local regions of negative spatial curvature whose maxima lay above a given noise threshold. Their parameters were then computed by fitting two-dimensional Gaussians to the flux density distribution at those locations. An estimate for the position error associated with fitting a Gaussian to an unresolved source [Condon, 1997] is

$$\Delta\psi \approx \frac{\theta_b}{\text{SNR}\sqrt{8\ln 2}}, \quad (2)$$

where  $\theta_b$  is the FWHM of the synthesized beam, assumed to be circular, and SNR refers to the signal-to-noise ratio, which we take to be the ratio of the fitted peak flux density to the local RMS noise. Note that positions can be measured to significantly greater precision than the instrument resolution and that this precision increases with the SNR of the source (e.g., for a source at the  $5\sigma$  detection threshold, its position can be measured correct to  $\sim 10$ arc sec, an order of magnitude smaller than the synthesized beam width). We excluded candidate sources with negative fitted peak flux densities, and those with large position errors ( $>1$  arc min) as quoted by AEGEAN. When AEGEAN encounters an island of pixels for which there are fewer pixels than fit parameters (six parameters per component), the source parameters are estimated rather than fitted. We excluded such sources from our analysis.

Cross matching the remainder with the National Radio Astronomy Observatory (NRAO) VLA Sky Survey (NVSS) catalog [Condon *et al.*, 1998] using a cross-matching radius of 1.2arc min resulted in the identification of 4713 distinct sources and 55,070 occurrences of any source in any epoch, implying that each source was observed in around 12 epochs on average. This data set contains 38 epochs in total. Cross matching was performed by identifying the nearest NVSS source within the threshold radius of a given AEGEAN source and associating it to the latter. Sources extracted by AEGEAN for which there was no NVSS source within the search radius were discarded. Around 7% of sources were excluded in this manner. The purpose of cross matching with an external catalog was to reduce the fraction of spurious sources, which may arise from noise spikes or residual sidelobes.

We chose data set B to contrast data set A in that the average amplitude of position offsets was low (9arc sec) compared to what is typically measured in other data sets, about half the amplitude seen in data set A. Source extraction returned 1600–2800 sources per snapshot for a clip level of  $5\sigma$ . We subjected the sources to the same filtering and cross-matching criteria as for data set A, except that we used the Sydney University Molonglo Sky Survey (SUMSS) catalog [Mauch *et al.*, 2003] for cross matching to suit the relatively southern declination. A total of 19,979 distinct sources were identified, and there were 179,450 occurrences over all epochs. Each source was thus observed in around nine epochs on average. There are 77 epochs in total for this data set. Sources for which there was no SUMSS match were discarded, this excluding  $\sim 1\%$  of sources.

Differences between the two data sets in the number of sources extracted per snapshot may be attributed to differing primary beam sizes (larger at lower frequencies) and differences in imaging and calibration approaches yielding different sensitivities. Differences in the cross-matching efficiency between the two data sets may be due to differing completeness levels of the reference catalogs or perhaps higher levels of ionospheric activity in data set A causing sidelobe degradation and an increase in spurious source identifications compared to data set B.

### 2.3. Analysis of Position Offsets

The power spectrum analysis technique described here is broadly applicable to any scalar quantity measurable over the pierce points. In this work we analyzed just position offset information, where we considered scalar projections of the position offset vector field onto different directions on the sky (we obtained these by taking the inner product of each vector with a unit vector pointing in a chosen direction). We computed the position offset vectors as the displacements of sources from their time-averaged celestial coordinates, which we took to be the reference points. The technique can also be applied to source flux densities, polarization vectors, or rotation measures, but we defer these to future work.

The purpose of using the time-averaged position of each source as a reference was to remove calibration-related position errors. We checked for these in separate analysis by cross matching the sources in each data set with the International Celestial Reference Frame Second Realization (ICRF2) catalog [Fey et al., 2009]. Many data sets displayed collective shifts of all sources from their ICRF2 positions, in some cases by up to 1 arc min, where the direction of the shift depended on the calibrator. Since the calibration solutions have no time dependence, measuring the offsets with respect to the time-averaged position removes systematic position offsets arising from calibration errors, which are likely to produce spurious peaks in the power spectra. However, the disadvantage of this operation is that ionospheric fluctuations whose drift speeds happen to match those of the sources are subtracted away from the data. The use of a time average also alters the temporal spectral response, since this is akin to a detrending/high-pass filtering operation with an effective window size given by the duration over which a source appears ( $\sim 12$  epochs = 24 min on average for data set A and  $\sim 9$  epochs = 54 min for data set B). The temporal frequency resolutions for the two data sets, therefore, differ from one another (roughly twice as high in data set B than A) and are systematically lower than those given by the reciprocals of the total observing durations. However, since many sources are detected for longer durations than average, the filtering effect is expected only to be partial and some sensitivity to lower temporal frequencies would be retained.

We specified pierce point locations in terms of a two-dimensional Cartesian coordinate system whose  $x$  axis points west and  $y$  axis points north. These were obtained via an equiareal projection of the celestial coordinates of each radio source. The native spherical coordinates for the projection [cf. Calabretta and Greisen, 2002], whose longitude and latitude we refer to as  $\beta$  and  $\gamma$ , respectively, are defined such that the fiducial point  $(\beta_0, \gamma_0) = (0, 0)$  corresponds to the zenith and the South Celestial Pole lies at  $(\beta_p, \gamma_p) = (90^\circ - \Lambda, 0^\circ)$ . Here  $\Lambda$  denotes the latitude of the observing site, measured positive southward; for the MWA,  $\Lambda = 26.7^\circ$ . We have used the symbols  $(\beta, \gamma)$  rather than the usual  $(\phi, \theta)$  of Calabretta and Greisen [2002] to avoid clashes with other variables defined in this paper. Geometrically, this corresponds to a  $90^\circ$  rotation of the Az/El coordinate system so that the coordinate equator lies on the meridian.

The coordinates  $(x, y)$  were computed using the pseudocylindrical Sanson-Flamsteed projection

$$\begin{pmatrix} x \\ y \end{pmatrix} = \begin{pmatrix} -\gamma \\ (\beta_1 - \beta) \cos \gamma - \beta_1 \end{pmatrix}, \quad (3)$$

where  $(\beta, \gamma) = (\beta_1, 0)$  is the center of projection; here we chose  $\beta_1$  to be the median value of  $\beta$  over all pierce points in each data set. With this choice of coordinates the  $x$  axis points west, the  $y$  axis points north, and the origin  $(x, y) = (0, 0)$  lies at the zenith. The Sanson-Flamsteed projection preserves spatial scales, although it fails to preserve angles. Angular distortions are minimized by our choice of native coordinates, whose poles are shifted away from the meridian where most MWA observations are conducted. A desirable property of these coordinates is that they are fixed to the terrestrial rather than the celestial sky, meaning that the velocity of a waveform will be measured with respect to the ground rather than the pierce points (which drift at  $\sim 20\text{ms}^{-1}$  through the ionosphere at an altitude of 300 km).

For a given point source whose position offset vector at some epoch is  $(\Delta x, \Delta y)$ , we defined its projection onto the  $\theta$  direction by

$$s_\theta = \Delta x \cos \theta + \Delta y \sin \theta, \quad (4)$$

where the angle  $\theta$  is measured anticlockwise from the positive  $x$  axis ( $\theta$  can be thought of as the polar angle in 2-D cylindrical coordinates). The scalar  $s_\theta$  is the quantity analyzed in all subsequent sections.

#### 2.4. Power Spectrum Computation

Every occurrence of a known NVSS or SUMSS source at a given epoch in a data set induces a corresponding pierce point defined in terms of one temporal ( $t$ ) and two spatial ( $x, y$ ) coordinates. The set of pierce points  $Q$ , along with their associated  $s_\theta$  values computed as per equation (4) for a chosen value of  $\theta$ , was then used to populate a three-dimensional, rectilinear, evenly spaced data cube  $M$  according to

$$M_{ijk}(\theta) = \begin{cases} s_\theta(q) & q = (x, y, t) \in Q \\ 0 & \text{otherwise.} \end{cases} \quad (5)$$

Here  $i, j, k \in \mathbb{Z}$  are the array indices of  $M$  along the  $x, y$ , and  $t$  directions, respectively. These were obtained from the spacetime coordinates of the pierce point  $q = (x, y, t)$  by gridding according to

$$\begin{aligned} i(q) &= \lceil (x - x_{\min})/d \rceil \\ j(q) &= \lceil (y - y_{\min})/d \rceil \\ k(q) &= t, \end{aligned} \quad (6)$$

where  $d$  is the chosen grid resolution,  $x_{\min}$  and  $y_{\min}$  are the minimum  $x$  and  $y$  values over  $Q$ , and  $t$  is the epoch number. Note that it is impossible to ensure that the mapping in (6) is unique. Where clashes occurred, we chose to average the  $s_\theta$  values together (this occurred at a low rate of 2–3%).

The spatiotemporal power spectrum  $\mathcal{P}$  for each data set was then calculated by taking the squared modulus of the discrete Fourier transform of  $M$  with respect to each of its three axes. We normalized the power spectrum by the observing volume  $V$  (size of the Fourier data cube, with units of  $\text{deg}^{-2} \text{s}^{-1}$ ) and the number of pierce points  $|Q|$  to obtain the dimensional power spectral density (units of  $\text{deg}^4 \text{s}$ ). This is

$$\mathcal{P}_{\ell mn}(\theta) = \frac{1}{V|Q|} \left| \sum_{i=1}^{N_x} \sum_{j=1}^{N_y} \sum_{k=1}^{N_t} M_{ijk}(\theta) \times \exp \left[ -2\pi i \left( \frac{(i-1)(\ell-1)}{N_x} + \frac{(j-1)(m-1)}{N_y} + \frac{(k-1)(n-1)}{N_t} \right) \right] \right|^2, \quad (7)$$

where  $N_x, N_y$ , and  $N_t$  are the dimensions of  $M$  along the  $x, y$ , and  $t$  axes, respectively,  $\ell, m, n \in \mathbb{Z}^+$  index the  $k_x, k_y$ , and  $\omega$  dimensions of the output data cube  $\mathcal{P}$ , and we have denoted  $i \equiv \sqrt{-1}$  to avoid clashes with the symbols used for the indices of  $M$ . Here  $\omega$  is the temporal frequency,  $k_x$  is the E-W spatial frequency, and  $k_y$  is the N-S spatial frequency.

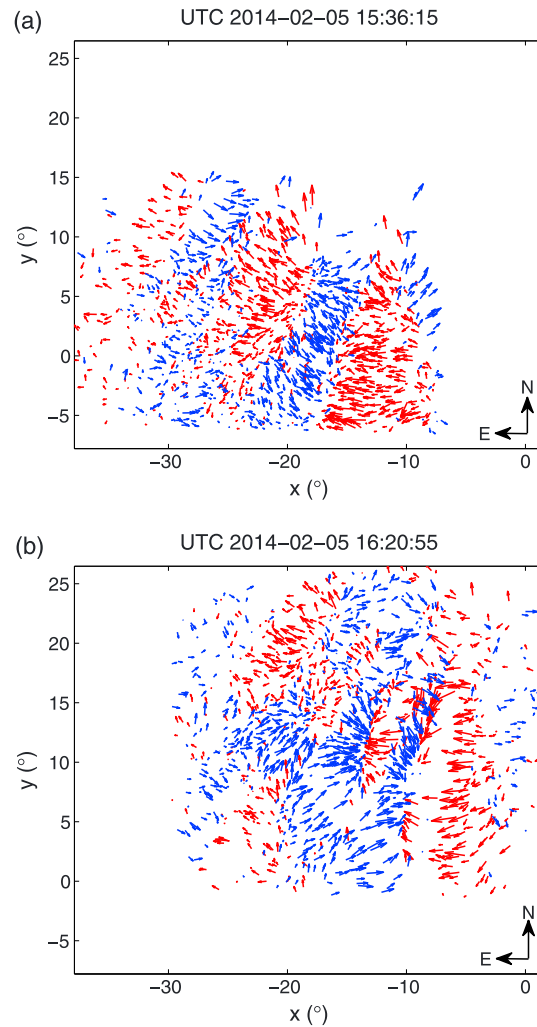
The temporal grid resolution for each data set in dimensional units is simply equal to the snapshot cadence, which is 2 min for data set A and 6 min for data set B. To choose a spatial grid resolution, we considered the angular size of the MWA projected onto the ionosphere, since this represents the size of the window over which differential baseline phases are averaged. Given a longest baseline of about 3 km and assuming an altitude of 300 km, this corresponds to a resolution of 36 arc min and a Nyquist sampling limit of 18 arc min. We chose a spatial increment of  $d = 9$  arc min to grid the pierce points, which corresponds to spatially over-sampling by a factor of 2. The sizes of the resulting data cubes were  $N_x \times N_y \times N_t = 264 \times 229 \times 38$  elements for data set A and  $262 \times 262 \times 77$  elements for data set B.

### 3. Results

Figure 2 shows the position offset vector field for two selected snapshots from data set A. There is a remarkable level of spatial organization into what appear to be patches of coordinated motion, where source displacements alternate between east and west on a spatial scale of  $\sim 5^\circ$  between reversals ( $\sim 10^\circ$  spatial periodicity). The patches are elongated roughly NW-SE (geographic). In the movie of the full data set (see supporting information), these patches can be seen to drift slowly across the sky toward the NE.

In the case of data set B, which was chosen for its relatively low level of ionospheric activity as inferred from the small magnitudes of position offsets compared to other MWA data sets, the position offset vector field displays isolated N-S elongated structures in the form of narrow vertical streaks (see Figure 3 for selected





**Figure 2.** Spatial distribution of position offset vectors for two selected snapshots in data set A, where the middle of each arrow marks the time-averaged location of a point source. The x axis points west, the y axis points north, and (0,0) marks the zenith. Arrows are colored red if they have a negative x component (eastward pointing), blue if their x component is positive (westward pointing). Arrow lengths are scaled to 100 times the actual displacement distance. The data are plotted using a Sanson-Flamsteed projection scheme (see section 2.3 for details). See Movie S1 for an animation of the vector field for the remaining snapshots of this data set.

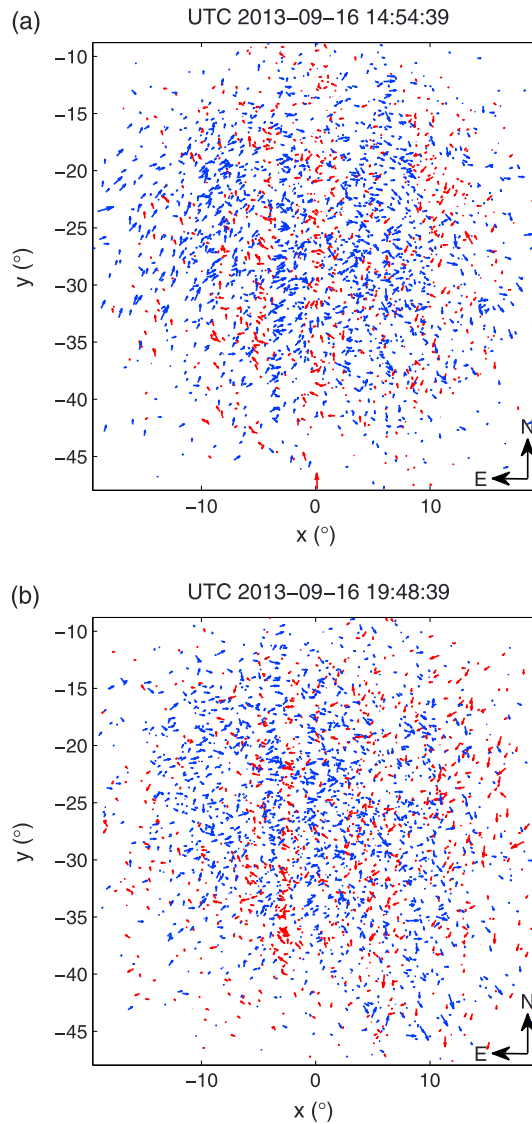
snapshots, and the corresponding movie in the supporting information). These are much less pronounced than the bands in data set A, and unlike in data set A, there is no obvious periodicity in these structures.

The degree of anisotropy of a vector field can be quantified by examining how the average projected amplitude of the vectors varies as a function of  $\theta$ . The total power of fluctuations in each data set is defined to be

$$T(\theta) = \frac{V}{N_x N_y N_t} \sum_{\ell=1}^{N_x} \sum_{m=1}^{N_y} \sum_{n=1}^{N_t} \mathcal{P}_{\ell mn}(\theta) \quad (8)$$

(integral of  $\mathcal{P}(\theta)$  over all spatial and temporal frequencies, for a given projection angle  $\theta$ ). The dependence of this on  $\theta$  is plotted in Figure 4. We see that the fluctuation power per pierce point is higher in data set A than B, which is consistent with the visibly larger amplitude of motion in data set A.

Figure 4 shows that  $T(\theta)$  maximizes along the E-W direction ( $\theta \approx 0^\circ$ ) in data set A, and along the NW-SE direction ( $\theta \approx 65^\circ$ ) in data set B. The act of projecting the vector field onto a given value of  $\theta$  is analogous to passing light through a polarizing filter, and so we can define the degree of anisotropy (cf. linear polarization)



**Figure 3.** As for Figure 2, but for data set B and with arrow lengths scaled at 120 times the actual displacement distance. See Movie S2 for an animation of the vector field for the remaining snapshots of this data set.

over a range of  $\theta$  values. The power spectra for several representative values of  $\theta$  are included in this paper. For other  $\theta$  values, we refer the reader to the supporting information comprising movies showing the evolution of the power spectra as the projection axis rotates through a full cycle. Since a unidirectional vector field vanishes when the axis of projection is orthogonal to it, by rotating the axis of projection we selectively filter out different wave modes and enhance others. In this manner, we infer the presence of multiple groups of waves propagating in a variety of directions and with different phase speeds. We verified with simulated data (see section A1) that our power spectra return results consistent with expectations.

### 3.1. Response Function

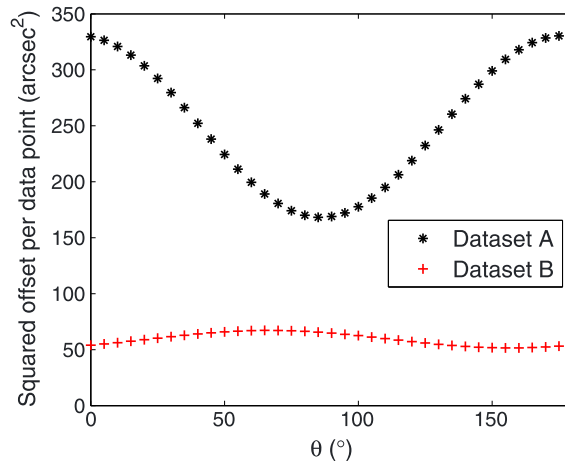
A rectilinear data cube of quasi-uniformly distributed points would be expected to produce sinc-like ringing in both space and time; however, the natural sampling pattern of the MWA is influenced by two additional factors. First, the MWA primary beam response gradually decreases toward the edges of the FOV, leading to a smooth decline in the S/N ratio and thereby a decline in the density of sources. This tends to soften spatial ringing. Second, the diagonal tracks with respect to  $(x, y, t)$  made by pierce points drifting across the sky are expected to produce diagonal ringing features with respect to  $(k_x, k_y, \omega)$  in the response function,

to be  $(M - m)/(M + m)$ , where  $M$  and  $m$  are the maximum and minimum values of  $T(\theta)$ , respectively. If the ionosphere is the main source of systematic anisotropies in the position offset vector field, then the degree of anisotropy is a nominal lower bound on the contribution of the ionosphere to the angular position offsets. The degree of anisotropy in data set A is  $\sim 30\%$ , and in data set B it is  $\sim 10\%$ .

The power minima of Figure 4 correspond to characteristic residual position offsets of about 13 arc sec for data set A and 7 arc sec for data set B. These are upper bounds on the contribution of isotropic sources of error (e.g., fitting errors, for roughly isotropic  $u, v$  coverage) to the measured scatter in angular position. The mean value of the position fitting error  $\Delta\psi$  (see equation (2)) is around 3 arc sec for both data sets, implying that fitting errors can only account for a small fraction of the position scatter. Assuming no other time-dependent effects, this indicates that a significant amount of the observed position that shifts at 154 and 183 MHz is due to the ionosphere.

Figure 5 shows a linear dependence of position offsets on  $\lambda^2$ , where  $\lambda$  is the observing wavelength, for bright ( $\geq 30\sigma$ ) sources. Such a dependence would be expected if the shifts were largely due to refractive effects (cf. equation (1)). However, the small fractional bandwidth of our observations prevents us from ruling out other functional dependencies. Although the dependence on  $\lambda^2$  is well described by a straight line, the best fit intercepts are nonzero. This suggests that multiple factors with different  $\lambda$  dependencies may be contributing to the position offsets, but a full investigation into this is beyond the scope of this paper.

In the following subsections we present the power spectra computed for the two data sets



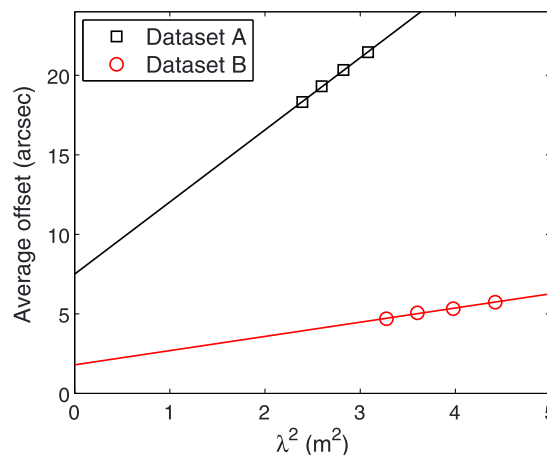
**Figure 4.** The total power  $T(\theta)$  normalized to the number of measurement points in each data set, as a function of the orientation of the axis of projection  $\theta$ , measured north of west.

spacetime distribution of pierce points is concentrated about an axis that is skewed westward following the direction of source motion. Longer on-source times also imply that source tracks extend for greater distances on average than for MWATS. The drift speed of sources can in fact be calculated from Figure 6b as the gradient of the diagonal features: this is  $d\omega/dk_x \approx 4 \times 10^{-3} \text{ degs}^{-1}$ , which agrees with the angular rotation speed of the Earth at the latitude of the MWA ( $360^\circ \cos 26.7^\circ \text{ day}^{-1} = 3.7 \times 10^{-3} \text{ degs}^{-1}$ ).

### 3.2. Power Spectra for Data Set A

The power spectra for  $\theta = 45^\circ$  and  $135^\circ$  are shown in Figures 8 and 9, respectively. The dominant mode for  $\theta = 45^\circ$  is a low spatial-frequency mode with a period of  $\sim 1\text{h}$ , where the power spectral density distribution is elongated along the direction  $50^\circ$  anticlockwise from the positive  $k_x$  axis. This corresponds to large-scale structure (angular scale of the order that of the FOV) with phase fronts aligned roughly NE-SW traveling toward the NW. We discuss this in section 4.2.

For  $\theta = 135^\circ$  there are strong peaks at  $|k| \approx 0.1 \text{ deg}^{-1}$ , corresponding to phase fronts spaced regularly by  $\sim 10^\circ$  and stretching along  $\theta \approx 50^\circ$  (i.e., NW-SE, geographic). This matches the direction of the elongation seen for the bands in Figure 2 and their spacing as estimated by eye. Figure 9 (bottom) reveals the temporal frequency to be about  $0.4 \text{ mHz}$  (period of 40 min). The corresponding phase velocity is about  $4 \times 10^{-3} \text{ degs}^{-1}$  toward the NE. There is additional power spreading out to higher spatial frequencies, indicating the presence of smaller-scale structure up to  $|k| \approx 0.5 \text{ deg}^{-1}$  (angular scales of  $\sim 2^\circ$ ). We discuss these observations further in section 4.1.



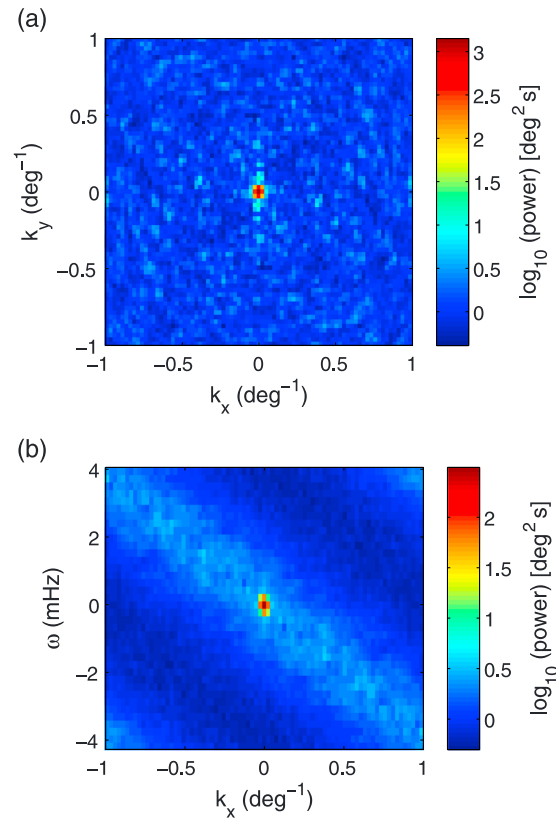
**Figure 5.** The magnitude of the angular position offset of sources in four frequency subbands, as a function of squared wavelength. Each data point was obtained by averaging the magnitude of offset over all sources appearing in that band, restricted to those brighter than  $30 \sigma$ . The lines are linear fits to the four data points. The error bars on each data point associated with random fitting errors are smaller than the marker size.

extending orthogonally to the drift direction in  $(x, y, t)$ . Since celestial sources drift westward (increasing  $x$  with increasing  $t$ ), we expect the ringing to be inclined toward negative  $k_x$  with increasing  $\omega$ .

The response functions for data sets A and B after applying a Gaussian taper in the temporal dimension are shown in Figures 6 and 7. These each have a compact main lobe with minimal side lobes (note the logarithmic scale and  $\delta$ -function-like spike at the origin), which is desirable for spectral analysis, but there is evidence for the diagonal ringing patterns anticipated above. These features are more prominent in data set A than B, and the main reason for this is the difference in survey mode between EoR and MWATS. Because the EoR survey tracks a fixed patch of celestial sky, the

### 3.3. Power Spectra for Data Set B

The power spectra for  $\theta = 0^\circ$  and  $90^\circ$  are shown in Figures 10 and 11, respectively. In Figure 10, the power spectral density distribution is concentrated along  $k_y = 0$  over a substantial range of  $k_x$ , out to  $|k_x| = 1 \text{ deg}^{-1}$ . This indicates the presence of small-scale structure with angular scales of  $\sim 1^\circ$  highly elongated along the N-S direction but with no strong periodicity. The lower panel ( $\omega, k_x$ -plane) shows no clear concentration of power associated with higher  $k_x$  modes,



**Figure 6.** The response function of data set A, where points have been gridded to a spatial resolution of 9 arc min, averaged over (a)  $\omega$  and (b)  $k_y$ .

meaning that these small-scale structures do not drift with a well-defined phase velocity. We discuss these in section 4.1.

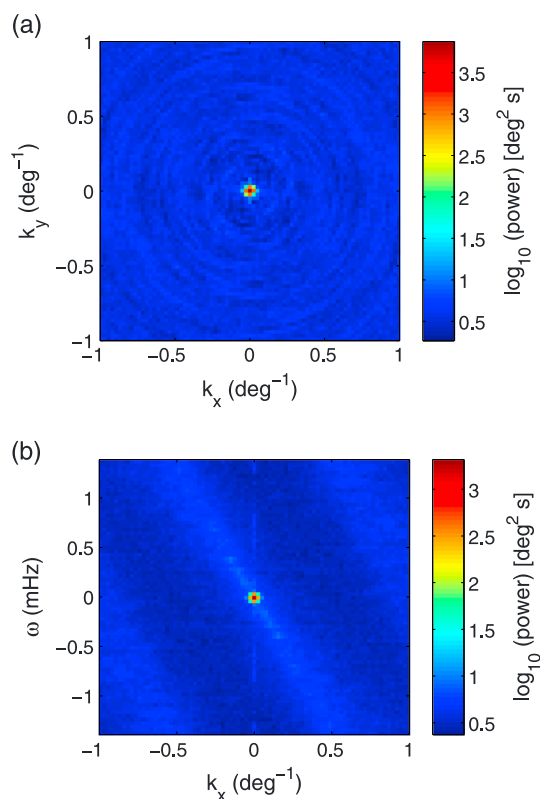
There is a peak at  $\omega = 0$  and the lowest nonzero  $k_x$  value probed by the MWA that can be seen in Figure 11, indicating the presence of a stationary mode with a wavelength of order the size of the FOV. We discuss possible explanations for this feature in section 4.3.

For  $\theta = 135^\circ$  there appears to be a peak at around  $\omega = 0.6$  mHz near  $|k| = 0$ , corresponding to a long-wavelength fluctuation of angular width of the order that of the FOV with a period of about 30 min. However, we are unable to determine the propagation direction because this is not resolved in the  $k_x, k_y$  plane. We discuss this in section 4.2.

### 3.4. Error Analysis

We performed an error analysis by comparing the amplitudes of the features in the power spectra with the noise level expected from position fitting errors. We used a Monte Carlo approach where we sampled position offsets from Gaussian distributions with characteristic widths given by equation (2) and then computed the power spectra. We took the significance of the data to be the number of standard deviations above the mean, where the standard deviations and means were computed for each spatiotemporal frequency over 200 Monte Carlo iterations. All features in the power spectra are many standard deviations above the mean, indicating that the measured signals are significantly larger than expected of random fluctuations. Figure 12 shows an example of a significance plot for data set A, where the quantity plotted is the number of standard deviations above the mean.

An alternative means of estimating the error is to compare the measured positions between images generated from the two instrumental polarizations (the N-S and E-W dipole responses), since these are effectively two independent, simultaneous measurements of the same signal. The ionosphere should have identical effects on these images, and so any discrepancies represent the contribution of random noise. We find that the two corresponding sets of position measurements agree to within the position fitting errors predicted



**Figure 7.** As for Figure 6, but for data set B.

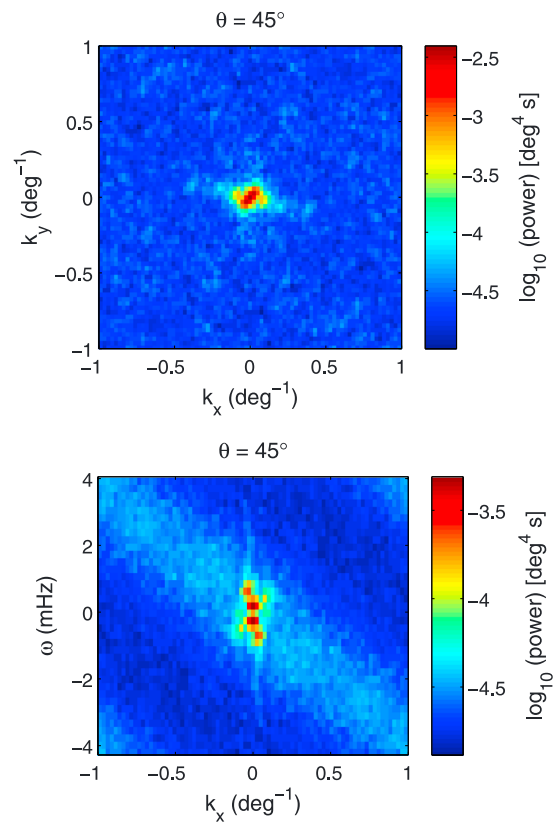
by equation (2). An example comparison between the two polarization responses for a bright radio source is shown in Figure 13, where the position offsets for the two independent measurements are seen to be consistent within error bars.

Although it is reassuring that the signals are strong compared to the amplitude of noise expected from fitting errors, the most problematic sources of error are likely to be those that are coherent rather than incoherent. The power spectral density of incoherent noise distributes itself fairly evenly over the various frequency modes and so should not interfere with the identification of coherent signals, which are localized in Fourier space. However, spurious structure or the distortion of features in the power spectra can arise from a variety of causes, including sidelobes of the response functions (see Figures 6 and 7), spectral leakage, and imaging artifacts.

#### 4. Discussion

Similar power spectrum analyses of point source position offsets have been performed previously by *Helmboldt and Intema* [2012] and *Helmboldt et al.* [2012c] using the VLA. However, the spatial sampling of our data is 1–2 orders of magnitude more complete and our FOV several times larger, which has not only yielded a better-behaved response function for power spectrum analysis but has also allowed us to reconstruct ionospheric waveforms directly from the images. The MWA is the first radio telescope with the ability to do this; in previous studies making use of radio interferometers [*Jacobson and Erickson*, 1993; *Jacobson et al.*, 1996; *Hoogeveen and Jacobson*, 1997a, 1997b; *Helmboldt*, 2014], the spatial sampling of the ionosphere was too sparse to visualize the density structures in any detail.

We have identified several types of fluctuations in the MWA data occupying different regions of Fourier space. These include the spatially resolved, slowly drifting fluctuations visible in Figures 2 and 3 and large-scale, unresolved fluctuations near  $|k| = 0$ . Of the large-scale fluctuations, we have identified those with well-defined periods of 30 min and 1 h, and also those that appear to be stationary with respect to the FOV ( $\omega = 0$ ).



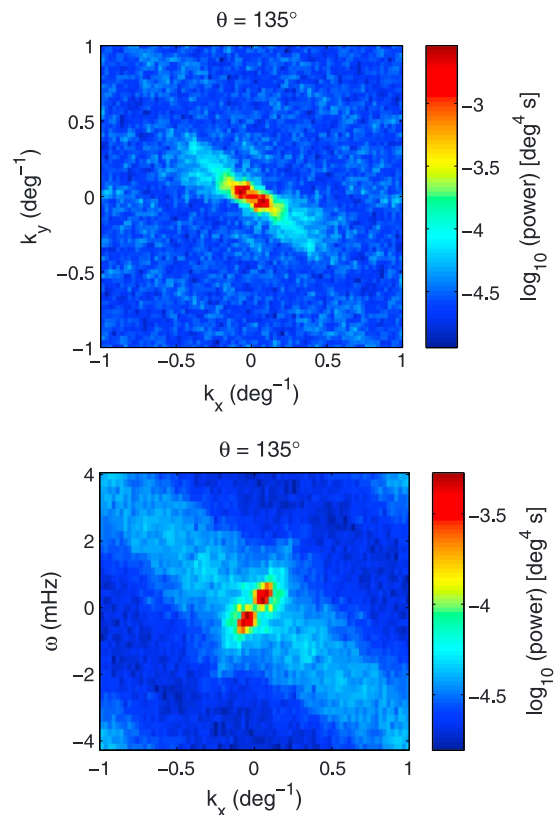
**Figure 8.** Power spectrum averaged over (top)  $\omega$  and (bottom)  $k_y$ , for data set A, for  $\theta = 45^\circ$ . See Movie S3 for an animation of the power spectrum for this data set as the projection axis rotates.

#### 4.1. Slowly Drifting, Small-Scale Fluctuations

As described in section 3, spatially resolved fluctuations were detected in both data sets A and B, where the structures appear to be elongated greatly along a certain direction. Comparison with the Earth's magnetic field parameters at the location of the MWA (magnetic inclination of  $-60^\circ$ , magnetic declination of  $0^\circ$ ) reveals that these are consistent with being irregularities that are extended along the geomagnetic field lines. Their drifts were measured ( $4 \times 10^{-3} \text{ degs}^{-1}$  in data set A) are several times slower than would be expected of TID propagation speeds at thermospheric heights ( $\geq 100 \text{ ms}^{-1}$  or  $\geq 0.02 \text{ degs}^{-1}$  at 300 km altitude). This can be explained if they are in situ stationary structures that are drifting along with the background plasma. Drift speeds of several tens of meters per second are expected for neutral wind motions at thermospheric heights [Amayenc and Vasseur, 1972].

At altitudes above about 150 km, where the electrical conductivity along the Earth's magnetic field lines is substantially higher than transverse to them, the field lines can be treated as equipotentials [Park and Dejnakintra, 1973]. At these heights, diffusion along the field lines is much faster than across them, and density enhancements that may initially form along a localized portion of the field lines readily diffuse along them to form large-scale, ductlike structures. These may then persist for significant durations, of the order timescales governing cross-field diffusion, which can be hours to days [Thomson, 1978].

Although we have not estimated the altitudes of the structures seen here, previous analyses of field-aligned density ducts in MWA data by Loi et al. [2015] have obtained values of  $\sim 400\text{--}1000$  km. If the structures lie at around 600 km altitude, their physical widths would be between 10 and 100 km, similar to values measured by satellites for field-aligned ducts [Angerami, 1970] and the magnetic eastward directed plasmaspheric waves described by Helmboldt and Intema [2012]. The physical drift speeds in data set A would be about  $40 \text{ ms}^{-1}$  at this altitude. If the local fractional density variations are comparable between the two data sets, the greater prominence of the structures in data set A than in data set B can be explained if they are at a lower altitude in the former, since background densities are larger at lower altitudes. The suggestion that the structures

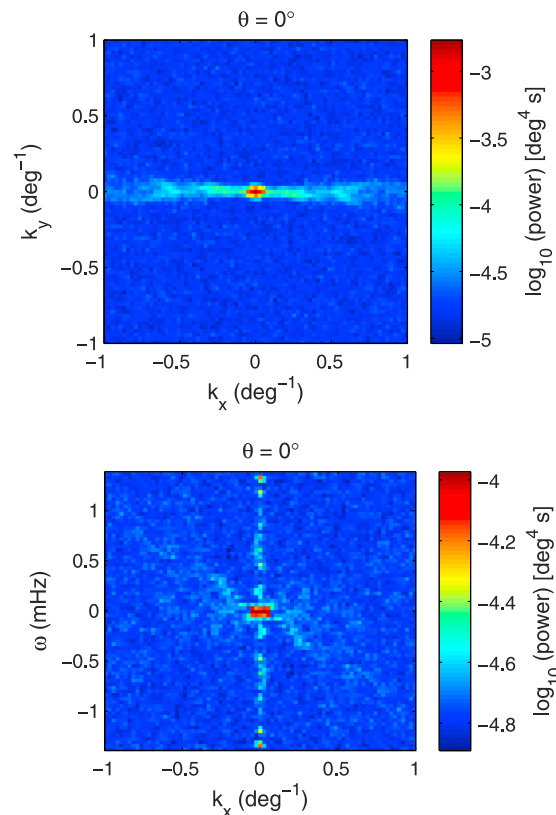


**Figure 9.** As for Figure 8 but with  $\theta = 135^\circ$ .

in data set A are nearer the ground, if the physical widths are intrinsically similar between the two data sets, is consistent with the larger angular widths observed in data set A.

Solar activity was significantly higher during the interval of data set A (10.7 cm radio flux index  $F_{10.7} = 188$  sfu, where 1 sfu =  $10^{-22}$  Wm $^{-2}$  Hz $^{-1}$ ) compared to data set B ( $F_{10.7} = 93$  sfu). However, similarly extensive structuring is also seen in MWA data during periods of low solar activity, and so this appears not to be a decisive influence on the observed behavior. There is no clear link to geomagnetic activity that may explain the differences between the two data sets: both were obtained under quiet conditions where the  $K_p$  global storm index (quantifying fluctuations of the Earth's magnetic field) was around 1, the 24 h maximum  $Kp$  index not exceeding 2 on either day. A broad study performed by Hoogeveen and Jacobson [1997a] using the Los Alamos radio interferometer found that field-aligned ducts of similar description appear most prominently on nights just after geomagnetic storms. Although we have yet to examine MWA data taken under significantly disturbed geomagnetic conditions, we have noted that field-aligned ducts appear routinely under quiet to mild conditions. Global GPS TEC maps [e.g., Rideout and Coster, 2006] have insufficient TEC precision and spatial resolution to reveal structures on these scales, but detections may still be possible with single-receiver relative TEC measurements. A climatological study of ionospheric behavior above the observatory making use of combined MWA and on-site GPS TEC measurements is the subject of ongoing work.

The steeply inclined nature inferred for the density structures ( $60^\circ$  to the ground, as given by the magnetic inclination at the MRO) is at odds with the constant-altitude, thin-screen approximations commonly used to model the ionosphere and employed in some calibration strategies [Rino, 1982; Wernik et al., 2007; Intema et al., 2009]. So far, no one attempting screen-based calibration has accounted for the possibility that density irregularities that affect radio observations may be localized to *magnetic shells* rather than constant-altitude layers. The Earth's magnetic field is well described by a dipole, and so the field lines are generally inclined with respect to the ground: they are horizontal at the magnetic equator, vertical at the magnetic poles, and at intermediate inclinations at other latitudes.



**Figure 10.** As for Figure 8 but for data set B with  $\theta = 0^\circ$ . See Movie S4 for an animation of the power spectrum for this data set as the projection axis rotates.

Although the bulk of the TEC is indeed concentrated in a relatively thin layer at constant altitude, the constant offset component of the TEC is invisible to a radio interferometer, since this adds a constant phase to all antennas which then cancels out. Interferometers differ fundamentally from conventional techniques for probing the ionosphere, the latter of which are mostly sensitive to absolute density and therefore tend to be dominated by the signal from the layer of peak electron density (300–400 km altitude). Because an interferometer is sensitive to  $\nabla_{\perp}$  TEC rather than absolute TEC, it experiences no such bias: irregularities at a large range of altitudes can easily dominate the signal, including those well above the peak density layer.

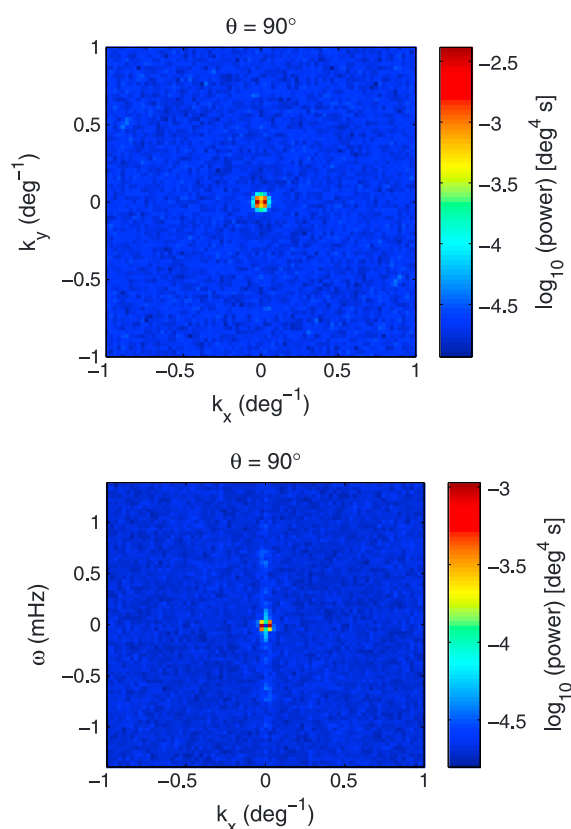
The physically compact size of the MWA simplifies the problem of ionospheric calibration by minimizing the differences between the phase screens seen by different antennas [cf. *Lonsdale, 2005*], thus reducing the dimensionality of the calibration problem to simply a function of angular position (besides time). However, screen calibration models that may eventually be implemented on larger arrays (e.g., LOFAR) may need to allow for inclined screen components, to capture this tendency for magnetic shell localization. We find that ductlike, field-aligned (and therefore steeply inclined) structures are very common in MWA data, appearing in half or more of all nights examined. This implies that a large population of irregularities causing measurable distortions in MWA data are ones that cannot be captured by a constant-altitude screen model.

#### 4.2. Large-Scale, Short-Period Fluctuations

The long-wavelength ( $|k| \approx 0$ ), 30 min period fluctuations detected in data set B are likely to be associated with a medium-scale TID (MSTID). MSTIDs have wavelengths of several hundred kilometers (of the order the size of the FOV or larger, at 300 km altitude) and periods of several tens of minutes [*Hunsucker, 1982*], so these give rise to fluctuations occupying low spatial frequency and high temporal frequency regions of Fourier space. These are the most common types of ionospheric fluctuation believed to occur at midlatitudes. We detect their spatiotemporal signatures in many other MWA data sets.

The large-scale, time-resolved fluctuation in data set A with a measured period of about 1h could be a large-scale TID (LSTID). LSTIDs have wavelengths of  $\sim 1000$  km and periods of an hour or more [*Georges, 1968*]. However, noting that its inferred propagation direction is parallel to the field lines, this may not in fact be a





**Figure 11.** As for Figure 10 but with  $\theta = 90^\circ$ .

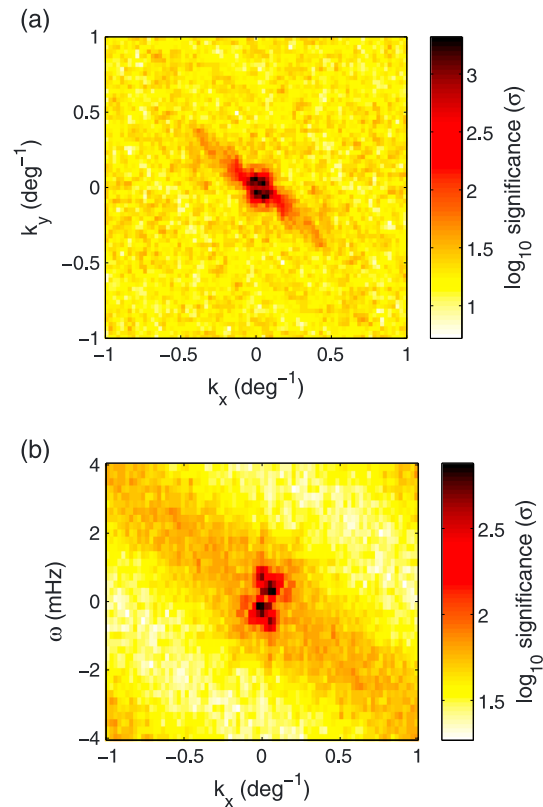
fluctuation confined to the thermosphere (as is the case for TIDs) but instead represent the wave-like transport of material up or down inclined magnetic flux tubes. While LSTIDs are expected to produce periodic, quasi-sinusoidal oscillations, the relatively short duration of our observation for data set A does not allow us to distinguish between this and a one-off wave of deposition. Flows between the plasmasphere and ionosphere are expected to occur at night, when decay of the ionosphere via recombination is combatted by downflows from the plasmaspheric reservoir [Park, 1970; Helmboldt et al., 2012b].

There is a possibility that oscillating disturbances such as TIDs may be aliased at MWA survey cadences. The shortest TID wave period measurable at the cadence of the two MWA surveys used here is 4 min for data set A and 12 min for data set B. Gravity waves, which comprise MSTIDs and LSTIDs, can only propagate at frequencies below the local Brunt-Väisälä (B-V) frequency, also known as the buoyancy frequency [Yeh and Liu, 1974]. The B-V frequency at ionospheric heights corresponds to a period of 10–12 min [Hines, 1960], and so in the absence of background winds these cadences should be adequate for characterizing MSTIDs and LSTIDs. However, background winds can Doppler shift the waves to higher frequencies exceeding the Nyquist limit. The presence of winds with speeds as high as  $100\text{ms}^{-1}$  has been the proposed explanation for observations of gravity waves with periods as short as 5 min [Davies et al., 1973]. Small-scale TIDs (SSTIDs), which are acoustic waves rather than gravity waves [Hunsucker, 1982], oscillate with frequencies above the B-V frequency and may be aliased at these cadences. However, raw interferometer visibilities are often stored at 0.5s resolution, meaning that the data can be reimaged under a much higher time resolution if necessary.

#### 4.3. Large-Scale, Stationary Fluctuations

The peak at  $\omega = 0$  and the lowest nonzero spatial frequency in data set B imply the existence of a fluctuation that is stationary over the FOV, with a length scale of the order the size of the FOV. This can be explained by way of either ionospheric or instrumental effects. Both are likely to contribute at some level, but we have not investigated into which may be the more dominant cause.

A completely still, uniform ionosphere at a constant altitude can produce a systematic distortion in the angular position shifts of background sources because of the  $\sec \zeta$  dependence of the TEC on the zenith angle  $\zeta$ . The



**Figure 12.** Significance plot (showing number of standard deviations above the mean) for the power spectrum of data set A, averaged over (a)  $\omega$  and (b)  $k_y$ , for  $\theta = 90^\circ$ , on a logarithmic scale. This was generated using 200 Monte Carlo iterations.

MWA FOV is about  $30^\circ$  wide, which implies that for a zenith pointing, the TEC along lines of sight near the edge of the FOV is about 4% larger than at zenith. For a background TEC of order 10TECU (where 1TECU =  $10^{16}$  electrons $m^{-2}$ ) and an ionospheric altitude of 300 km, the associated radial gradient is about  $4 \times 10^{10}$   $m^{-3}$ , which would produce position shifts of order 10arc sec at 154MHz. This is larger than typical position fitting errors and should be detectable via power spectrum analysis, since this signal would be coherent and persistent. Sources refract toward regions of lower TEC and so the offset vectors associated with this effect would be radially inward.

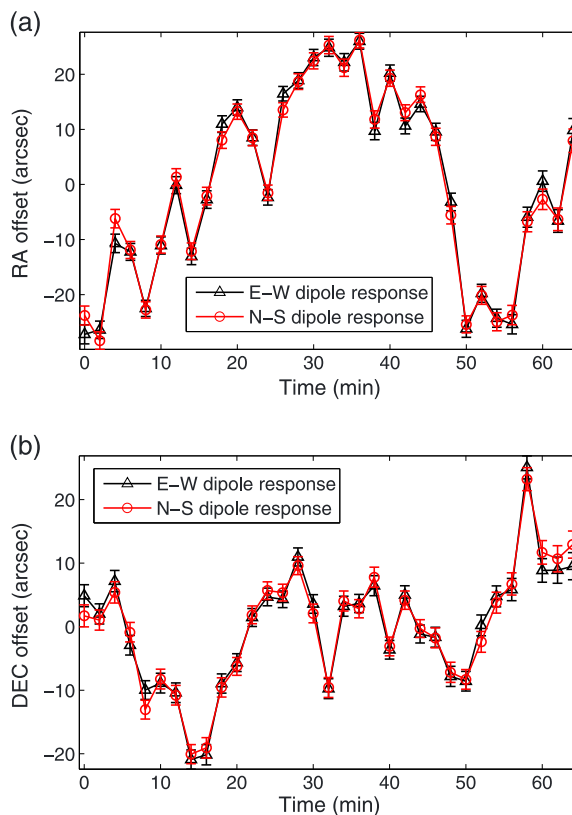
Although this ionospheric distortion should be circularly symmetric about the zenith, the signal appearing in the power spectra for data set B is concentrated along E-W. This can be explained by the fact that the time-averaged position of each source is taken as the reference position. This causes stationary features with respect to the sources to be subtracted out (recall the discussion in section 2.3). Since celestial sources drift E-W, N-S components of the distortion pattern would be removed, leaving just an E-W signal.

Instrumental effects that may give rise to large-scale distortions of source angular positions include tile position errors and errors in correcting for the  $w$  terms during imaging (these describe the deviation of the array from coplanarity; [Perley, 1999]). Unlike the  $\sec\zeta$  distortion produced by the ionosphere,  $w$ -correction errors can give rise to distortion patterns that are radially inward, outward, and/or with azimuthal components.

Applying a low-pass spatial filter to data set B reveals that the distortion pattern associated with the  $\omega = 0$  peak is radially inward, potentially consistent with either source of error. However, in other MWATS data sets where  $\omega = 0$  peaks appear, similar checks sometimes reveal distortions that are radially outward. This opposes the direction expected for ionospheric distortions, indicating that systematic angular distortions may exist in MWA data that are not necessarily ionospheric in origin.

#### 4.4. Turbulence

Kolmogorov turbulence [Kolmogorov, 1941] is expected to produce a power spectrum that falls off as  $k^{-5/3}$ . Note that although the 3-D power spectrum of TEC fluctuations goes as  $k^{-11/3}$ , the quantity measured here



**Figure 13.** Comparison of the angular offsets of a bright ( $35 \sigma$ ) source between images recorded in the two independent instrumental polarizations, along the (a) RA and (b) Dec directions (these are orthogonal). Error bars indicate the precision associated with Gaussian fitting. The two independent measurements are consistent with one another to within the measurement precision, which is significantly smaller than the amplitude of the position fluctuations themselves.

is the TEC gradient. Taking a derivative multiplies the fluctuation spectrum by a factor of  $i|k|$  and the power spectrum by a factor of  $k^2$ , leading to an overall  $k^{-5/3}$  dependence [Helmholtz et al., 2012b]. The broad distribution of power spectral density along  $k_y = 0$  in Figure 10 (top) may be evidence for a turbulent cascade, but this is not the only possibility. Narrow N-S density structures can also produce a power spectral density distribution that is broadly extended along  $k_y = 0$  (cf. Fourier transform of a  $\delta$  function). That narrow structures indeed appear in data set B (Figure 3) suggests that these are the more likely explanation for the observed power along  $k_y = 0$ , rather than an anisotropic turbulent spectrum, although we cannot rule out the existence of the latter.

A further complication arises from the effects of spectral leakage and noise from incoherent measurement errors, both of which decrease the S/N ratio in the power spectra. These would flatten the power spectral density and preclude reliable measurement of the power law index of a turbulent component, should there be one present (see section A1). A proper quantification of all major sources of error and deconvolution to remove sampling artifacts will be required to measure the spatiotemporal properties of TEC fluctuations with greater accuracy.

### 5. Conclusions and Outlook

We have performed the first power spectrum analysis of ionospheric TEC variations using the MWA. Complex, coherent, and highly organized fluctuations are often seen in the data. Power spectrum analysis is a useful technique for measuring the spatiotemporal properties of these fluctuations. This complements the superb ionospheric imaging capabilities of the MWA, which is the first radio telescope capable of imaging the ionosphere. Typical angular displacements at 154 and 183MHz are 10–20arc sec, subpixel most of the time but systematically larger than expected from position fitting errors. The MWA is built on the planned site of the

low-frequency portion of the future Square Kilometre Array (SKA low) [Dewdney *et al.*, 2009]. It therefore has an important role to play in establishing the types and levels of ionospheric activity that will be experienced by SKA low, and the analysis methods described here can be applied to this end.

This work only investigated fluctuations in the angular position of point sources. However, flux density is another quantity of astronomical interest that may also be affected by the ionosphere. Ionospheric scintillation is expected to be induced by irregularities whose transverse spatial scales are several kilometers or less, which is below what we can directly measure using the technique described here. The large-scale fluctuations we do detect should only produce negligible changes in the flux density, much smaller than the pixel-to-pixel RMS at typical instrument sensitivities. The current analysis therefore does not probe the TEC fluctuations that may give rise to significant amplitude variability. We intend to address this more quantitatively in a forthcoming paper.

Our data show evidence for slow-moving, alternating fronts of TEC depletion and enhancement which are likely to be field-aligned density ducts, and also longer-wavelength, faster-moving waves which may be TIDs. A stationary, radially inward distortion pattern detected in data set B may arise from a combination of ionospheric and instrumental effects. The presence of coherent, time-dependent fluctuations in both data sets, in particular, data set B, which was chosen for its relatively low amplitude of source angular displacements, implies that ionospheric effects contribute significantly to source motions in MWA data at 154 and 183MHz and are present even in relatively undistorted data sets. This suggests that the successful implementation of algorithms targeting ionospheric distortions will likely lead to significant improvements in astrometric accuracy for point-source observations with the MWA and other low-frequency arrays.

The wide instantaneous FOV and the high completeness of pierce points enable the MWA to map ionospheric structure over a  $\sim 150$  km region at a spatial resolution of  $\sim 3$  km (300 km altitude), bridging the gap between global-scale GPS measurements and local-scale radar measurements. Contemporaneous GPS, radar, airglow, and MWA observations would enable geophysical plasma phenomena to be studied holistically on a wide range of length scales. Although airglow and MWA measurements probe similar spatial scales, the MWA is sensitive to a much larger range of vertical scales than airglow. In the future, we intend to perform more extensive studies involving a larger number of MWA data sets, both to quantify the unwanted effects of the ionosphere on the primary data products for radio astronomy and also to harness the valuable imaging capabilities of the MWA for the advancement of ionospheric science.

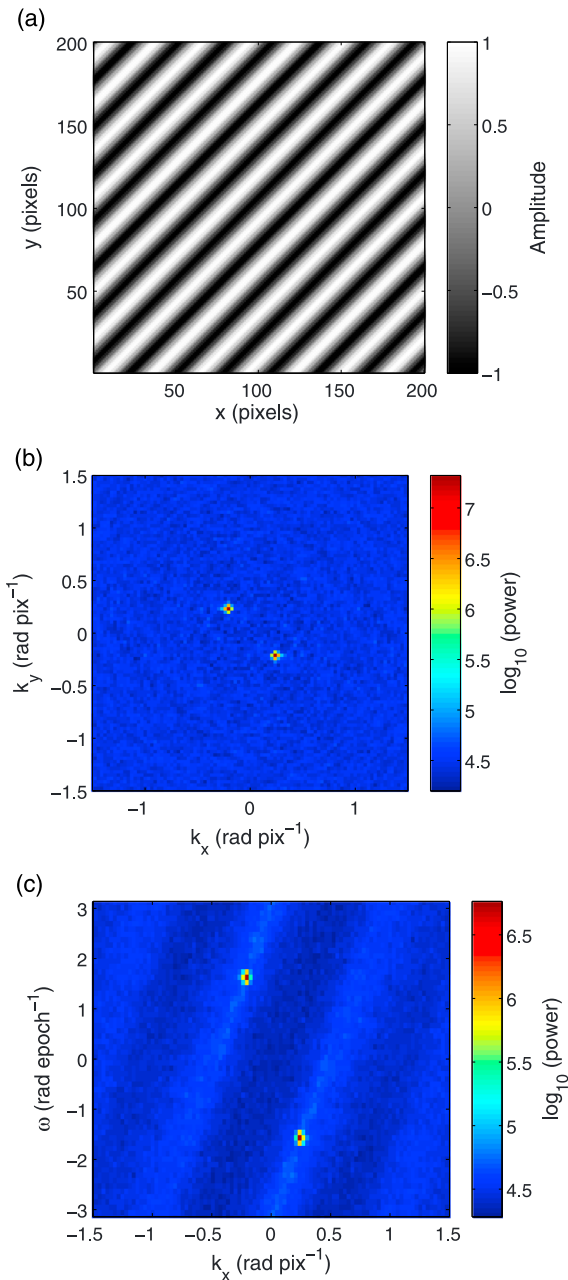
## Appendix A: Simulated Data

We performed experiments with simulated data to assess the severity of sampling-related artifacts related to typical pierce point patterns of the MWA. We tested two types of input: (1) a traveling plane wave and (2) a spectrum of waves with amplitudes following a power law. To conduct the tests, we used the sampling pattern from data set B, trimmed to dimensions of  $200 \times 200 \times 60$  and with temporal gaps removed.

### A1. Experiment 1: Plane Wave

To test the system response we injected a single plane wave with a wavelength of 20 pixels and period of four epochs, traveling diagonally toward the bottom right in Figure A1a. The resulting power spectrum is shown in Figures A1b and A1c, where we have collapsed the data cube down to two dimensions for visualization by averaging over either  $\omega$  or  $k_y$ .

There are strong peaks at  $|k| \approx 0.32$  rad pix<sup>-1</sup> and  $\omega \approx 1.6$  rad epoch<sup>-1</sup>, implying a wavelength of  $\sim 20$  pixels and a period of  $\sim 3.9$  epochs, in close agreement with the input values. Note that the power spectra are inversion-symmetric and so a given wave mode produces a pair of peaks on opposite sides of the origin, corresponding to positive and negative frequencies of equal amplitude. The direction of propagation can also be recovered from the power spectra: the line joining the peaks in Figure A1b has  $dk_y/dk_x = -1$ , which matches the input propagation angle of  $-45^\circ$ , modulo  $180^\circ$  (Figure A1a). The wave is therefore either moving toward the top left or the bottom right. This can be narrowed down to a single direction by considering the line joining the peaks in Figure A1c, which has  $d\omega/dk_x < 0 \implies dx/dt = -d\omega/dk_x > 0$ ; i.e., the phase velocity has a positive  $x$  component. Hence, we conclude that motion is toward the bottom right.



**Figure A1.** (a) Snapshot of input plane wave for experiment 1, which has a wavelength of 20 pixels and a period of four epochs, and the output power spectrum averaged over (b)  $\omega$  and (c)  $k_y$ , showing a peak at  $|k| = 0.32 \text{ rad pix}^{-1}$ ,  $\omega = 1.6 \text{ rad epoch}^{-1}$ . The diagonal ripples in Figure A1c are features of the response function for data set B, whose sampling distribution was borrowed for this experiment.

## A2. Experiment 2: Power Law

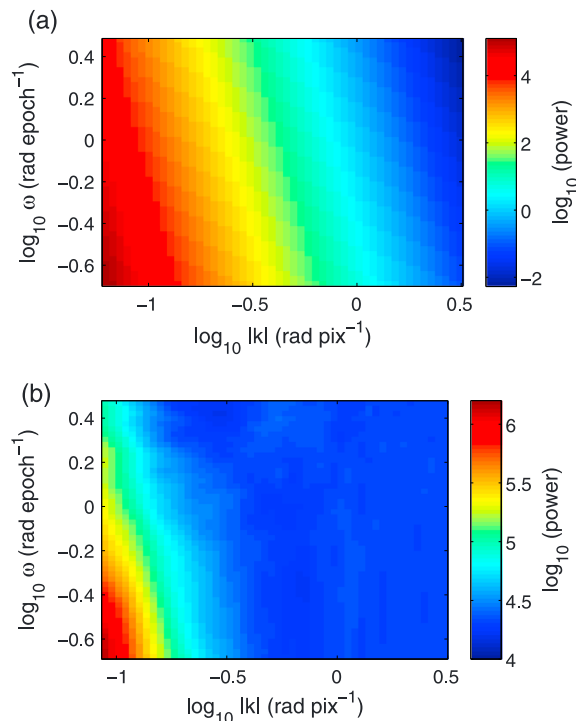
We tested a superposition of modes with amplitudes following a simple isotropic power law, where the power (squared modulus) of a certain mode with spatial and temporal frequencies of  $k$  and  $\omega$ , respectively, is given by

$$\mathcal{P}(\omega, k) \propto k^m \omega^n. \quad (\text{A1})$$

The input and output power spectra for  $m = -11/3$  and  $n = -1$  are shown in Figure A2, interpolated to a logarithmic grid. The flatness of the output spectrum compared to the input is likely to be a result of spectral leakage degrading the S/N ratio. However, the qualitative features of the input are recovered reasonably well.

**Acknowledgments**

The data supporting this paper are available upon request submitted via email to the corresponding author at sloi5113@uni.sydney.edu.au. This scientific work makes use of the Murchison Radio-astronomy Observatory. We acknowledge the Wajarri Yamatji people as the traditional owners of the Observatory site. Support for the MWA comes from the U.S. National Science Foundation (grants AST-0457585, PHY-0835713, CAREER-0847753, and AST-0908884), the Australian Research Council (LIEF grants LE0775621 and LE0882938), the U.S. Air Force Office of Scientific Research (grant FA9550-0510247), and the Centre for All-sky Astrophysics (an Australian Research Council Centre of Excellence funded by grant CE110001020). Support is also provided by the Smithsonian Astrophysical Observatory, the MIT School of Science, the Raman Research Institute, the Australian National University, and the Victoria University of Wellington (via grant MED-E1799 from the New Zealand Ministry of Economic Development and an IBM Shared University Research grant). The Australian Federal government provides additional support via the National Collaborative Research Infrastructure Strategy, Education Investment Fund, and the Australia India Strategic Research Fund, and Astronomy Australia Limited, under contract to Curtin University. We acknowledge the iVEC Petabyte Data Store, the Initiative in Innovative Computing and the CUDA Center for Excellence sponsored by NVIDIA at Harvard University, and the International Centre for Radio Astronomy Research (ICRAR), a Joint Venture of Curtin University and The University of Western Australia, funded by the Western Australian State government. I.H.C. acknowledges the support of grants DP110101587 and DP140103933. C.M.T. is supported by an Australian Research Council DECRA award, DE140100316. D.L.K. acknowledges the support of grant AST-1412421.



**Figure A2.** (a) The input power spectrum for experiment 2 and (b) the output power spectrum, shown on logarithmic axes. The output spectrum has been boxcar-smoothed with a  $3 \times 3$  pixel element with respect to the linear grid. Note the use of logarithmic axes, which are best for visualizing a power law.

**References**

Amayenc, P., and G. Vasseur (1972), Neutral winds deduced from incoherent scatter observations and their theoretical interpretation, *J. Atmos. Sol. Terr. Phys.*, *34*, 351–364, doi:10.1016/0021-9169(72)90038-4.

Angerami, J. J. (1970), Whistler duct properties deduced from VLF observations made with the OGO 3 satellite near the magnetic equator, *J. Geophys. Res.*, *75*(31), 6115–6135, doi:10.1029/JA075i031p06115.

Bernardi, G., D. A. Mitchell, S. M. Ord, L. J. Greenhill, B. Pindor, R. B. Wayth, and J. S. B. Wyithe (2011), Subtraction of point sources from interferometric radio images through an algebraic forward modelling scheme, *MNRAS*, *413*(1), 411–422, doi:10.1111/j.1365-2966.2010.18145.x.

Bernhardt, P. A., and C. G. Park (1977), Protonospheric-ionospheric modeling of VLF ducts, *J. Geophys. Res.*, *82*(32), 5222–5230, doi:10.1029/JA082i032p05222.

Bernhardt, P. A., and C. L. Siefring (2006), New satellite-based systems for ionospheric tomography and scintillation region imaging, *Radio Sci.*, *41*, RS5523, doi:10.1029/2005RS003360.

Bernhardt, P. A., C. L. Siefring, I. J. Galysh, T. F. Rodilosso, D. E. Koch, T. L. MacDonald, M. R. Wilkens, and G. P. Landis (2006), Ionospheric applications of the scintillation and tomography receiver in space (CITRIS) mission when used with the DORIS radio beacon network, *J. Geod.*, *80*(8–11), 473–485, doi:10.1007/s00190-006-0064-6.

Bolton, J. G., O. B. Slee, and G. J. Stanley (1953), Galactic radiation at radio frequencies. VI. Low altitude scintillations of the discrete sources, *Aust. J. Phys.*, *6*(4), 434–451, doi:10.1071/PH530434.

Bougeret, J. L. (1981), Some effects produced by the ionosphere on radio interferometry: Fluctuations in apparent source position and image distortion, *Astron. Astrophys.*, *96*, 259–266.

Bowman, J. D., et al. (2013), Science with the Murchison Widefield Array, *Publ. Astron. Soc. Aust.*, *30*, e031, doi:10.1017/pas.2013.009.

Calabretta, M. R., and E. W. Greisen (2002), Representations of celestial coordinates in FITS, *Astron. Astrophys.*, *395*, 1077–1122, doi:10.1051/0004-6361:20021327.

Cohen, A. S., and H. J. A. Röttgering (2009), Probing fine-scale ionospheric structure with the very large array radio telescope, *Astron. J.*, *138*(2), 439–447, doi:10.1088/0004-6256/138/2/439.

Coker, C., S. E. Thonnard, K. F. Dymond, T. J. W. Lazio, J. J. Makela, and P. J. Loughmiller (2009), Simultaneous radio interferometer and optical observations of ionospheric structure at the Very Large Array, *Radio Sci.*, *44*, RS0A11, doi:10.1029/2008RS004079.

Condon, J. J. (1997), Errors in elliptical Gaussian fits, *Publ. Astron. Soc. Pac.*, *109*, 166–172.

Condon, J. J., W. D. Cotton, E. W. Greisen, Q. F. Yin, R. A. Perley, G. B. Taylor, and J. J. Broderick (1998), The NRAO VLA sky survey, *Astron. J.*, *115*, 1693.

Cornwell, T., and E. B. Fomalont (1999), Self-calibration, in *Synthesis imaging in radio astronomy II*, *ASP Conf. Ser.*, edited by G. B. Taylor, C. L. Carilli, and R. A. Perley, pp. 187–199, Astron. Soc. Pac., San Francisco, Calif.

Darroutzet, F., et al. (2009), Plasmaspheric density structures and dynamics: Properties observed by the CLUSTER and IMAGE missions, *Space Sci. Rev.*, *145*(1–2), 55–106, doi:10.1007/s11214-008-9438-9.

Davies, K., T. B. Jones, and P. F. Weaver (1973), Ionospheric winds in the F-region and their effects on the limiting periods of gravity waves, *Planet. Space Sci.*, *21*(1), 147–149, doi:10.1016/0032-0633(73)90027-5.

- Dewdney, P. E., P. J. Hall, R. T. Schilizzi, and T. J. L. W. Lazio (2009), The square kilometre array, *Proc. IEEE*, *97*(8), 1482–1496, doi:10.1109/JPROC.2009.2021005.
- Ellingson, S. W., T. E. Clarke, A. Cohen, J. Craig, N. E. Kassim, Y. Pihlstrom, L. J. Rickard, and G. B. Taylor (2009), The long wavelength array, *Proc. IEEE*, *97*(8), 1421–1430, doi:10.1109/JPROC.2009.2015683.
- Fey, A., D. Gordon, and C. S. Jacobs (2009), The second realization of the international celestial reference frame by very long baseline interferometry, Tech. Rep. IERS Tech. Note No. 35, IERS/IVS Working Group, Verlag des Bundesamts für Kartographie und Geodäsie, Frankfurt am Main.
- Fomalont, E. B., and R. A. Perley (1999), Calibration and editing, in *Synthesis Imaging in Radio Astronomy II, ASP Conf. Ser.*, vol. 180, edited by G. B. Taylor, C. L. Carilli, and R. A. Perley, pp. 79–110, Astron. Soc. Pac., San Francisco, Calif.
- Georges, T. M. (1968), HF Doppler studies of traveling ionospheric disturbances, *J. Atmos. Terr. Phys.*, *30*(5), 735–746, doi:10.1016/S0021-9169(68)80029-7.
- Gordon, W. E. (1958), Incoherent scattering of radio waves by free electrons with applications to space exploration by radar, *Proc. IRE*, *46*(11), 1824–1829, doi:10.1109/JRPROC.1958.286852.
- Hamaker, J. P. (1978), Atmospheric delay fluctuations with scale sizes greater than one kilometer, observed with a radio interferometer array, *Radio Sci.*, *13*(5), 873–891, doi:10.1029/RS013i005p00873.
- Hancock, P. J., T. Murphy, B. M. Gaensler, A. Hopkins, and J. R. Curran (2012), Compact continuum source finding for next generation radio surveys, *MNRAS*, *422*(2), 1812–1824, doi:10.1111/j.1365-2966.2012.20768.x.
- Helmboldt, J. F. (2014), Drift-scan imaging of traveling ionospheric disturbances with the Very Large Array, *Geophys. Res. Lett.*, *41*, 4835–4843, doi:10.1002/2014GL060951.
- Helmboldt, J. F., and H. T. Intema (2012), Very large array observations of disturbed ion flow from the plasmasphere to the nighttime ionosphere, *Radio Sci.*, *47*, RS0K03, doi:10.1029/2012RS004979.
- Helmboldt, J. F., and H. T. Intema (2014), Advanced spectral analysis of ionospheric waves observed with sparse arrays, *J. Geophys. Res. Space Physics*, *119*, 1392–1413, doi:10.1002/2013JA019162.
- Helmboldt, J. F., T. J. W. Lazio, H. T. Intema, and K. F. Dymond (2012a), High-precision measurements of ionospheric TEC gradients with the very large array VHF system, *Radio Sci.*, *47*, RS0K02, doi:10.1029/2011RS004883.
- Helmboldt, J. F., T. J. W. Lazio, H. T. Intema, and K. F. Dymond (2012b), A new technique for spectral analysis of ionospheric TEC fluctuations observed with the very large array VHF system: From QP echoes to MSTIDs, *Radio Sci.*, *47*, RS0L02, doi:10.1029/2011RS004787.
- Helmboldt, J. F., W. M. Lane, and W. D. Cotton (2012c), Climatology of midlatitude ionospheric disturbances from the Very large array low-frequency sky survey, *Radio Sci.*, *47*, RS5008, doi:10.1029/2012RS005025.
- Hewish, A. (1951), The diffraction of radio waves in passing through a phase-changing ionosphere, *Proc. R. Soc. A*, *209*(1096), 81–96, doi:10.1098/rspa.1951.0189.
- Hines, C. O. (1960), Internal atmospheric gravity waves at ionospheric heights, *Can. J. Phys.*, *38*(11), 1441–1481, doi:10.1139/p60-150.
- Hocke, K., and K. Schlegel (1996), A review of atmospheric gravity waves and travelling ionospheric disturbances: 1982–1995, *Ann. Geophys.*, *14*(9), 917–940, doi:10.1007/s00585-996-0917-6.
- Högbom, J. A. (1974), Aperture synthesis with a non-regular distribution of baselines, *Astron. Astrophys.*, *15*, 417–426.
- Hoogeveen, G. W., and A. R. Jacobson (1997a), Radio interferometer measurements of plasmasphere density structures during geomagnetic storms, *J. Geophys. Res.*, *2*(A7), 14,177–14,188, doi:10.1029/97JA00484.
- Hoogeveen, G. W., and A. R. Jacobson (1997b), Improved analysis of plasmasphere motion using the VLA radio interferometer, *Ann. Geophys.*, *15*, 236–245, doi:10.1007/s00585-997-0236-6.
- Hunsucker, R. D. (1982), Atmospheric gravity waves generated in the high-latitude ionosphere: A review, *Rev. Geophys.*, *20*(2), 293–315, doi:10.1029/RG020i002p00293.
- Hurley-Walker, N., et al. (2014), The Murchison widefield array commissioning survey: A low-frequency catalogue of 14,110 compact radio sources of 6,100 square degrees, *Publ. Astron. Soc. Aust.*, *31*, e045, doi:10.1017/pasa.2014.40.
- Intema, H. T., S. van der Tol, W. D. Cotton, A. S. Cohen, I. M. van Bemmel, and H. J. A. Röttgering (2009), Ionospheric calibration of low frequency radio interferometric observations using the peeling scheme I. Method description and first results, *Astron. Astrophys.*, *501*(3), 1185–1205, doi:10.1051/0004-6361/200811094.
- Jacobson, A. R., and W. C. Erickson (1992a), Wavenumber-resolved observations of ionospheric waves using the very large array radiotelescope, *Planet. Space Sci.*, *40*(4), 447–455, doi:10.1016/0032-0633(92)90163-I.
- Jacobson, A. R., and W. C. Erickson (1992b), A method for characterizing transient ionospheric disturbances using a large radiotelescope array, *Astron. Astrophys.*, *257*, 401–409.
- Jacobson, A. R., and W. C. Erickson (1993), Observations of electron density irregularities in the plasmasphere using the VLA radio interferometer, *Ann. Geophys.*, *11*(10), 869–888.
- Jacobson, A. R., G. Hoogeveen, R. C. Carlos, and M. C. Kelley (1996), Observations of inner plasmasphere irregularities with a satellite-beacon radio-interferometer array, *J. Geophys. Res.*, *101*(A9), 19,665–19,682, doi:10.1029/96JA01253.
- Kassim, N. E., R. A. Perley, W. C. Erickson, and K. S. Dwarakanath (1993), Subarcminute resolution imaging of radio sources at 74 MHz with the very large array, *Astron. J.*, *106*(6), 2218–2228, doi:10.1086/519022.
- Kassim, N. E., T. J. W. Lazio, W. C. Erickson, R. A. Perley, W. D. Cotton, E. W. Greisen, A. S. Cohen, B. Hicks, H. R. Schmitt, and D. Katz (2007), The 74 MHz system on the very large array, *Astrophys. J. Suppl. Ser.*, *172*(2), 686–719, doi:10.1086/519022.
- Kolmogorov, A. N. (1941), The local structure of turbulence in incompressible viscous fluid for very large Reynolds numbers, *Dokl. Akad. Nauk SSSR*, *30*(4), 301–304.
- Larsen, M. F., D. L. Hysell, Q. H. Zhou, S. M. Smith, J. Friedman, and R. L. Bishop (2007), Imaging coherent scatter radar, incoherent scatter radar, and optical observations of quasiperiodic structures associated with sporadic E layers, *J. Geophys. Res.*, *112*, A06321, doi:10.1029/2006JA012051.
- Laštovička, J. (2006), Forcing of the ionosphere by waves from below, *J. Atmos. Sol. Terr. Phys.*, *68*(3–5), 479–497, doi:10.1016/j.jastp.2005.01.018.
- Lee, J. K., F. Kamalabadi, and J. J. Makela (2008), Three-dimensional tomography of ionospheric variability using a dense GPS receiver array, *Radio Sci.*, *43*, RS3001, doi:10.1029/2007RS003716.
- Lee, L. C., and J. R. Jokipii (1975a), Strong scintillations in astrophysics. I. The Markov approximation, its validity and application to angular broadening, *Astrophys. J.*, *196*, 695–707, doi:10.1086/153458.
- Lee, L. C., and J. R. Jokipii (1975b), Strong scintillations in astrophysics. III. The fluctuations in intensity, *Astrophys. J.*, *202*, 439–453, doi:10.1086/153994.
- Lei, J., L. Liu, W. Wan, and S.-R. Zhang (2005), Variations of electron density based on long-term incoherent scatter radar and ionosonde measurements over Millstone Hill, *Radio Sci.*, *40*, RS2008, doi:10.1029/2004RS003106.

- Liu, J.-Y., C.-H. Chen, C.-H. Lin, H.-F. Tsai, C.-H. Chen, and M. Kamogawa (2011), Ionospheric disturbances triggered by the 11 March 2011 M 9.0 Tohoku earthquake, *J. Geophys. Res.*, *116*, A06319, doi:10.1029/2011JA016761.
- Loi, S. T., et al. (2015), Real-time imaging of density ducts between the plasmasphere and ionosphere, *Geophys. Res. Lett.*, *42*, 3704–3714, doi:10.1002/2015GL063699.
- Lonsdale, C. J. (2005), Configuration considerations for low frequency arrays, in *From Clark Lake to the Long Wavelength Array: Bill Erickson's Radio Science, ASP Conf. Ser.*, vol. 345, edited by N. Kassim et al., pp. 399–409, Astron. Soc. of the Pac., San Francisco, Calif.
- Lonsdale, C. J., et al. (2009), The Murchison widefield array: Design overview, *Proc. IEEE*, *97*(8), 1497–1506, doi:10.1109/JPROC.2009.2017564.
- Luhmann, J. G. (1995), Ionospheres, in *Introduction to space physics*, edited by M. G. Kievelson and C. T. Russell, pp. 183–202, Cambridge Univ. Press, Cambridge, U. K.
- Makela, J. J., M. C. Kelley, and M. J. Nicolls (2006), Optical observations of the development of secondary instabilities on the eastern wall of an equatorial plasma bubble, *J. Geophys. Res.*, *111*, A09311, doi:10.1029/2006JA011646.
- Mannucci, A. J., B. D. Wilson, D. N. Yuan, C. H. Ho, U. J. Lindqwister, and T. F. Runge (1998), A global mapping technique for GPS derived ionospheric total electron content measurements, *Radio Sci.*, *33*(3), 565–582, doi:10.1029/97RS02707.
- Mauch, T., T. Murphy, H. J. Buttery, J. Curran, R. W. Hunstead, J. G. Robertson, and E. M. Sadler (2003), SUMSS: A wide-field radio imaging survey of the southern sky II. The source catalogue, *MNRAS*, *342*, 1117–1130, doi:10.1046/j.1365-8711.2003.06605.x.
- Mercier, C. (1986), Observations of atmospheric gravity waves by radiointerferometry, *J. Atmos. Terr. Phys.*, *48*(7), 605–624, doi:10.1016/0021-9169(86)90010-3.
- Meyer-Vernet, N. (1980), On a day-time ionospheric effect on some radio intensity measurements and interferometry, *Astron. Astrophys.*, *84*, 142–147.
- Meyer-Vernet, N., G. Daigne, and A. Lecacheux (1981), Dynamic spectra of some terrestrial ionospheric effects at decametric wavelengths—Applications in other astrophysical contexts, *Astron. Astrophys.*, *96*, 296–301.
- Mitchell, D. A., L. J. Greenhill, R. B. Wayth, R. J. Sault, C. J. Lonsdale, R. J. Cappallo, M. F. Morales, and S. M. Ord (2008), Real-time calibration of the Murchison Widefield Array, *IEEE J. Sel. Top. Sign. Process.*, *2*(5), 707–717, doi:10.1109/JSTSP.2008.2005327.
- Munro, G. H. (1950), Travelling disturbances in the ionosphere, *Proc. R. Soc. A*, *202*(1069), 208–223, doi:10.1098/rspa.1950.0095.
- Offringa, A. R., J. J. van de Gronde, and J. B. T. M. Roerdink (2012), A morphological algorithm for improving radio-frequency interference detection, *Astron. Astrophys.*, *539*, A95, doi:10.1051/0004-6361/201118497.
- Offringa, A. R., et al. (2014), WSClean: An implementation of a fast, generic wide-field imager for radio astronomy, *MNRAS*, *444*(1), 606–619, doi:10.1093/mnras/stu1368.
- Ohta, K., T. Kitagawa, N. Shima, M. Hayakawa, and R. L. Dowden (1996), Characteristics of mid-latitude whistler ducts as deduced from ground-based measurements, *Geophys. Res. Lett.*, *23*(23), 3301–3304, doi:10.1029/96GL03253.
- Park, C. G. (1970), Whistler observations of the interchange of ionization between the ionosphere and the protonosphere, *J. Geophys. Res.*, *75*(22), 4249–4260, doi:10.1029/JA075i022p04249.
- Park, C. G. (1971), Westward electric fields as the cause of nighttime enhancements in electron concentrations in midlatitude F region, *J. Geophys. Res.*, *76*(19), 4560–4568, doi:10.1029/JA076i019p04560.
- Park, C. G., and M. Dejnakarindra (1973), Penetration of thundercloud electric fields into the ionosphere and magnetosphere: 1. Middle and subauroral latitudes, *J. Geophys. Res.*, *78*(28), 6623–6633, doi:10.1029/JA078i028p06623.
- Pearson, T. J., and A. C. S. Readhead (1984), Image formation by self-calibration in radio astronomy, *Annu. Rev. Astron. Astrophys.*, *22*, 97–130.
- Perley, R. A. (1999), Imaging with non-coplanar arrays, in *Synthesis Imaging in Radio Astronomy II, ASP Conf. Ser.*, vol. 180, edited by G. B. Taylor, C. L. Carilli, and R. A. Perley, pp. 383–400, Astron. Soc. Pac., San Francisco, Calif.
- Reinisch, B. W. (1986), New techniques in ground-based ionospheric sounding and studies, *Radio Sci.*, *21*(3), 331–341, doi:10.1029/RS021i003p00331.
- Rickett, B. J. (1977), Interstellar scattering and scintillation of radio waves, *Annu. Rev. Astron. Astrophys.*, *15*, 479–504, doi:10.1146/annurev.aa.15.090177.002403.
- Rideout, W., and A. Coster (2006), Automated GPS processing for global total electron content data, *GPS Solut.*, *10*(3), 219–228, doi:10.1007/s10291-006-0029-5.
- Rino, C. L. (1982), On the application of phase screen models to the interpretation of ionospheric scintillation data, *Radio Sci.*, *17*(4), 855–867, doi:10.1029/RS017i004p00855.
- Röttger, J. (1978), Drifting patches of equatorial spread-F irregularities—Experimental support for the spatial resonance mechanism in the ionosphere, *J. Atmos. Terr. Phys.*, *40*, 1103–1112, doi:10.1016/0021-9169(78)90058-2.
- Schunk, R. W., and A. F. Nagy (2009), *Ionospheres: Physics, Plasma Physics and Chemistry* 2nd ed., Cambridge Univ. Press, Cambridge, U. K.
- Shiokawa, K., M. Mori, Y. Otsuka, S. Oyama, S. Nozawa, S. Suzuki, and M. Connors (2013), Observation of nighttime medium-scale travelling ionospheric disturbances by two 630-nm airglow imagers near the auroral zone, *J. Atmos. Terr. Phys.*, *103*, 184–194, doi:10.1016/j.jastp.2013.03.024.
- Siefring, C. L., P. A. Bernhardt, D. E. Koch, and I. J. Galysh (2011), Using TEC and radio scintillation data from the CITRIS radio beacon receiver to study low and midlatitude ionospheric irregularities, *Radio Sci.*, *46*, RS0D19, doi:10.1029/2010RS004585.
- Singh, A. K., R. P. Singh, and D. Singh (2011), State studies of Earth's plasmasphere: A review, *Planet. Space Sci.*, *59*(9), 810–834, doi:10.1016/j.pss.2011.03.013.
- Solomon, S. C. (2010), Terrestrial ionospheres, in *Heliophysics: Evolving Solar Activity and the Climates of Space and Earth*, edited by C. J. Schrijver and G. L. Siscoe, p. 351, Cambridge Univ. Press, New York.
- Sutinjo, A., J. O'Sullivan, E. Lenc, R. B. Wayth, S. Padhi, P. Hall, and S. J. Tingay (2014), Understanding instrumental Stokes leakage in Murchison Widefield Array polarimetry, *Radio Sci.*, *50*, 52–65, doi:10.1002/2014RS005517.
- Thompson, A. R., J. M. Moran, and G. W. Swenson Jr. (2001), *Interferometry and synthesis in radio astronomy*, 2nd ed., John Wiley, Weinheim, Germany, doi:10.1002/9783527617845.
- Thomson, R. J. (1978), The formation and lifetime of whistler ducts, *Planet. Space Sci.*, *26*, 423–430, doi:10.1016/0032-0633(78)90064-8.
- Tingay, S. J., et al. (2013), The Murchison widefield array: The square kilometre array precursor at low radio frequencies, *Publ. Astron. Soc. Aust.*, *30*, e007, doi:10.1017/pasa.2012.007.
- van Haarlem, M. P., et al. (2013), LOFAR: The low-frequency array, *Astron. Astrophys.*, *556*, A2, doi:10.1051/0004-6361/201220873.
- Walker, A. D. M. (1978), Formation of whistler ducts, *Planet. Space Sci.*, *26*, 375–379, doi:10.1051/0004-6361/201220873.
- Wernik, A. W., L. Alfonsi, and M. Materassi (2007), Scintillation modeling using in situ data, *Radio Sci.*, *42*, RS1002, doi:10.1029/2006RS003512.
- Yeh, K. C., and C. H. Liu (1974), Acoustic-gravity waves in the upper atmosphere, *Rev. Geophys.*, *12*(2), 193–216, doi:10.1029/RG012i002p00193.