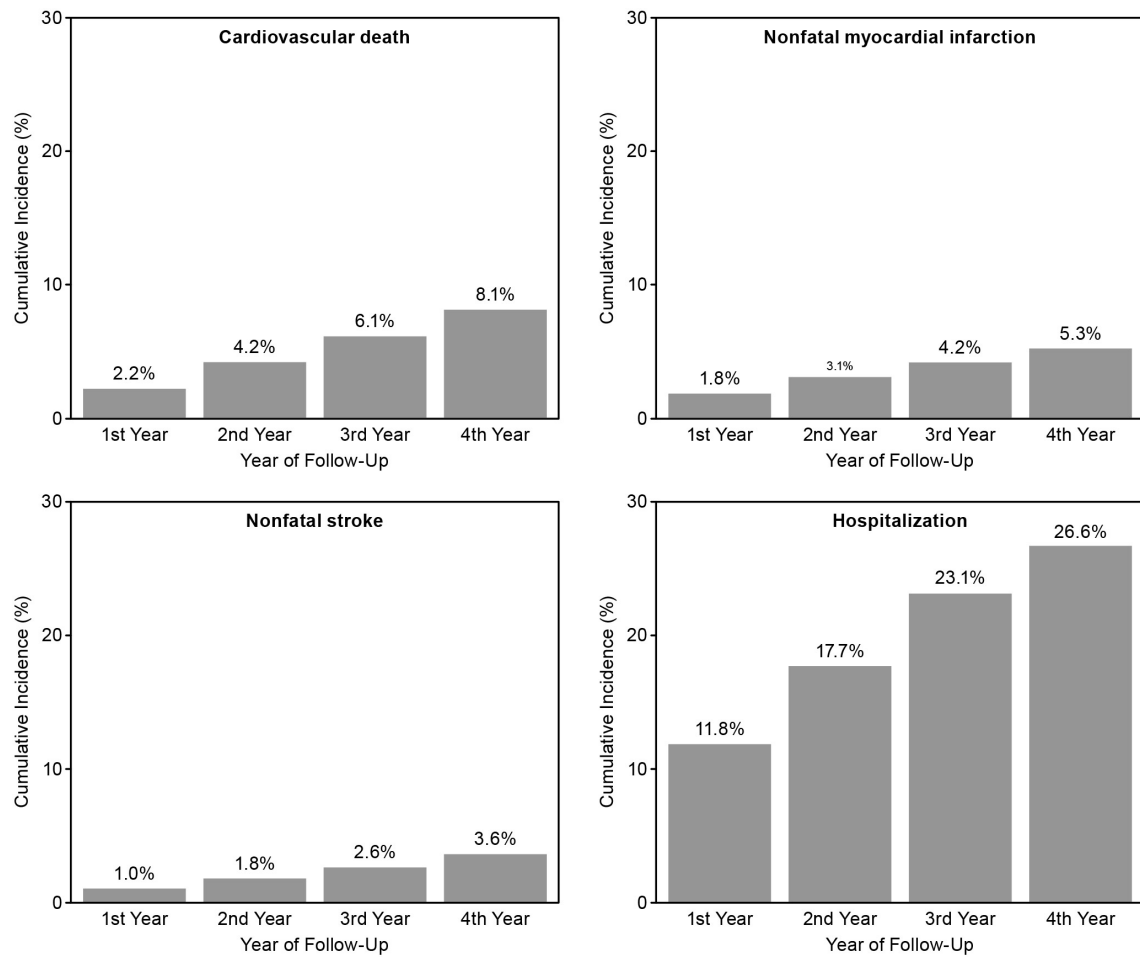


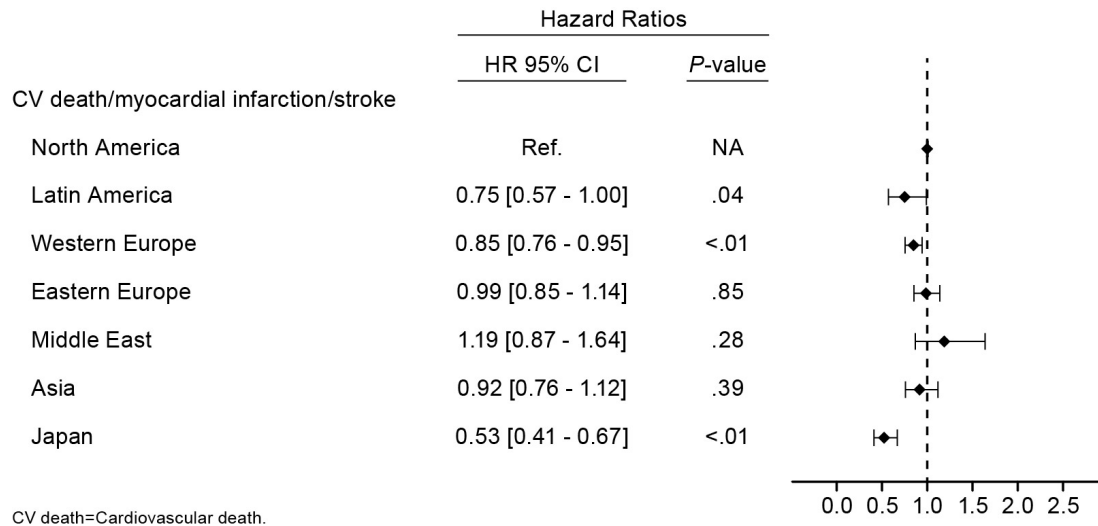
Supporting Information

Table 1. Baseline Post-MI Patient Demographics and Clinical Characteristics	Without 4-y follow up (N= 8,497)	With 4-y follow up (N= 8,273)
Age, mean (SD)	68.11 (10.55)	66 (9.88)
Men	6245 (73.6%)	6393 (77.3%)
Diabetes	3149 (37.4%)	2771 (33.7%)
Hypertension	6627 (78%)	6179 (74.7%)
Dyslipidemia	6731 (79.3%)	6531 (79%)
Renal Impairment *	213 (3.3%)	118 (1.7%)
Angina		
Stable	3258 (38.9%)	3453 (42%)
Unstable	1626 (19.4%)	1533 (18.7%)
Vascular Disease		
Poly vascular	819 (9.6%)	722 (8.7%)
Single vascular	7678 (90.4%)	7551 (91.3%)
History of MI		
<=1 year	1875 (22.1%)	1917 (23.2%)
> 1 year	6622 (77.9%)	6356 (76.8%)
Atrial Fibrillation/Flutter	1047 (12.6%)	773 (9.5%)
Congestive heart failure	2068 (24.8%)	1558 (19%)
Peripheral Artery Disease		
Obesity *		
Overweight (BMI, 25->30)	3533 (58.5%)	3621 (61.2%)
Class I (BMI, 30->35)	1684 (27.9%)	1638 (27.7%)
Class II (BMI, 35->40)	550 (9.1%)	468 (7.9%)
Class III (BMI≥40)	270 (4.5%)	190 (3.2%)
Smoker		
Former	4267 (51.6%)	4129 (51.4%)
Current	1119 (13.5%)	1180 (14.7%)
Medication		
Acetylsalicylic acid	6608 (77.8%)	6819 (82.6%)
At least one antiplatelet	7312 (86.1%)	7458 (90.2%)
Angiotensin converting enzyme inhibitors *	4294 (50.8%)	4462 (54.1%)
Angiotensin II receptor antagonists *	1599 (18.9%)	1521 (18.5%)
Nitrates/other anti-angina	3232 (38.6%)	3141 (38.4%)
Statin	6657 (78.4%)	6699 (81.1%)
Betablockers	5561 (65.7%)	5802 (70.2%)

Supplementary Figure 1. Cumulative incidence rates of cardiovascular outcomes for post-MI patients with no history of stroke/TIA, by year of follow up.



Supplementary Figure 2. Unadjusted hazard ratio for the primary outcome of cardiovascular death, MI, or stroke for post-MI patients with no history of TIA/Stroke according to geographic regions.



Supplementary Figure 3 Hazard ratio for the primary outcome of cardiovascular death, MI, or stroke for post-MI patients with no history of stroke/TIA according to geographic region after adjustment for sex and age.

