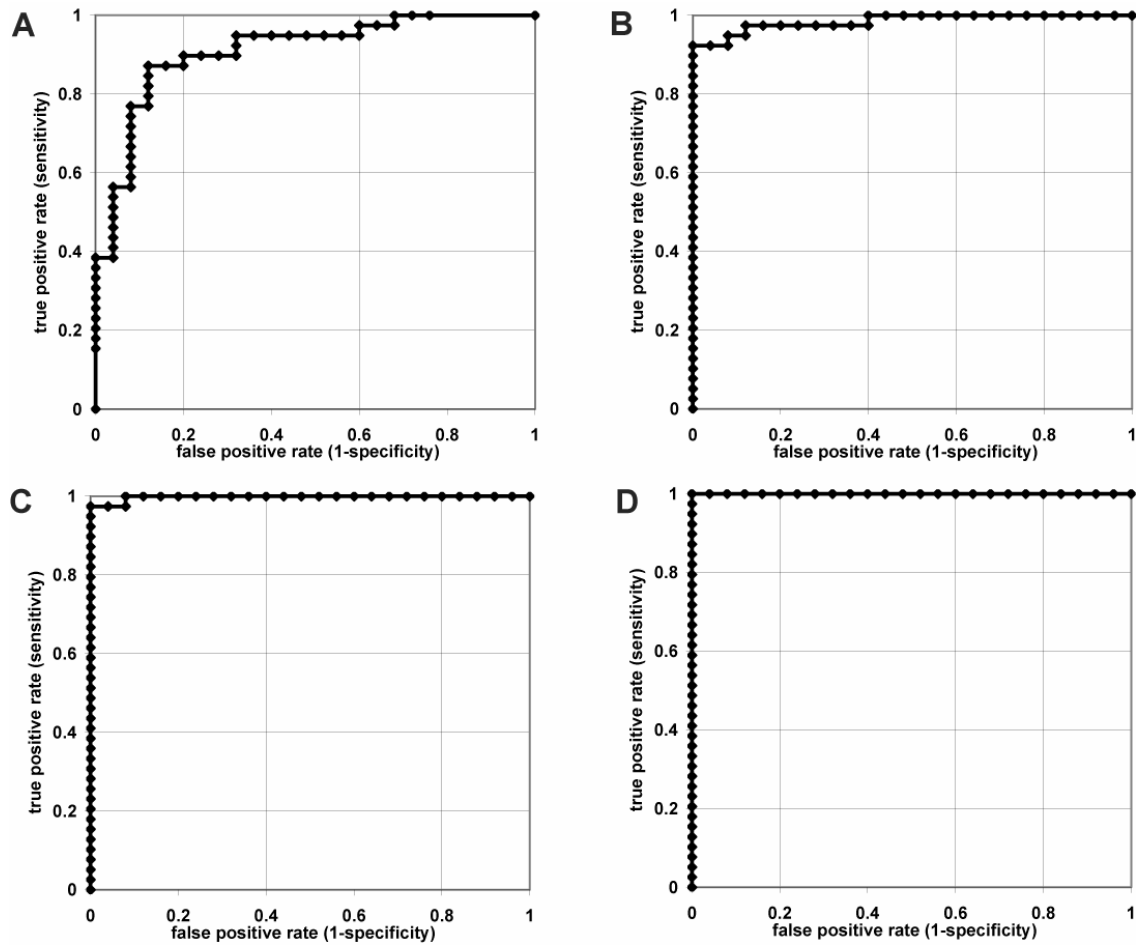


Supplementary Figures



Supplementary Figure 1. Receiver Operating Characteristic (ROC) curves obtained when using varying numbers of protein measurements to score samples in a leave-one-out cross-validation using scores from Diagonal Linear Discriminant Analysis. A) ROC curve when using just the single best assay, as determined by the samples that were not left out ($p = 2 \times 10^{-8}$, Rank-Sum test). B) Similar result using the two best assays ($p = 4 \times 10^{-11}$). C) Result using the 4 best assays ($p = 1 \times 10^{-11}$). D) ROC curve obtained when 3, or 5 or more assays were used ($p = 2 \times 10^{-18}$)