

FULL PAPER

Patterning corrosion-susceptible metallic alloys for digital image correlation in a scanning electron microscope

A. Githens¹ | S. Daly²

¹Department of Materials Science and Engineering, University of Michigan, Ann Arbor, MI, USA

²Department of Mechanical Engineering, UCSB, Engineering II, Santa Barbara, CA, USA

Correspondence

S. Daly, Department of Mechanical Engineering, UCSB, Engineering II, Santa Barbara, CA 93106-5070, USA.

Email: samdaly@engineering.ucsb.edu

Abstract

We investigate the self-assembly of gold nanoparticles on the surface of magnesium functionalized with 3-(aminopropyl)trimethoxysilane or 3-(mercaptopropyl)trimethoxysilane. These nanoparticles served as a speckle pattern for high magnification deformation tracking via digital image correlation combined with scanning electron microscopy. Controlling the pH of the gold nanoparticle suspension to a specific basicity passivated corrosion in magnesium and in three of its alloys to enable proper nanoparticle bonding and self-assembly. Magnesium was used as a model material as it is particularly difficult to modify for self-assembly because of its propensity to quickly form a thick oxide, hydroxide, and carbonate layer in the presence of oxygen, water, and carbon dioxide, respectively. Moreover, it corrodes in acidic and slightly basic solutions, further complicating the self-assembly process. Due to these difficulties, the successful self-assembly of nanoparticles on magnesium has not previously been reported, to the best of the authors' knowledge. This technique is potentially amendable to other corrosion-susceptible materials. Gold nanoparticles were self-assembled in a uniformly dispersed random distribution on pure cast magnesium, cast AM60 (Mg-6Al-0.5Mn), rolled WE43 (Mg-4Y-3Nd/Gd), and extruded ZE20 (Mg-2Zn-0.2Ce).

KEYWORDS

DIC, digital image correlation, magnesium, Mg, SEM

1 | INTRODUCTION

The self-assembly of nanoparticles on a variety of surfaces is of interest for numerous electronic, optical, and sensor applications.^[1] Nanoparticle arrays are generally used in applications where they are highly ordered^[2–7] or non-ordered with controllable density.^[8–12] This work reports on the self-assembly of uniformly distributed, non-ordered nanoparticles on magnesium and its alloys for use as a speckle pattern for high magnification digital image correlation (DIC). To the best of the authors' knowledge, the successful self-assembly of nanoparticles on magnesium has previously not been reported. Magnesium was used as a model material as it is particularly difficult to modify for self-assembly because of its propensity to quickly form a thick oxide, hydroxide, and carbonate layer in the presence of oxygen, water, and carbon dioxide, respectively. Moreover, it corrodes in acidic and

slightly basic solutions, complicating the self-assembly process. Using approaches developed for the self-assembly of nanoparticles on less reactive materials like glass, aluminum oxide, tin oxide, and aluminum alloys^[8,12] result in gold nanoparticle suspension attacking the magnesium surface (Figure 1). The approach described herein is inexpensive, provides a dense coverage of particles, and can be easily scaled by adjusting the size of the nanoparticles.

Gold nanoparticles have been successfully bonded to less reactive substrates via a silane coupling process.^[1,8,12] The process includes three main stages: first, the substrate is treated to maximize the number of hydroxyl groups on the surface, usually through oxygen plasma cleaning or a strong alkaline cleaning. Next, a silane with at least one hydrolysable alkoxy group undergoes hydrolysis when mixed with water, and the substrate is immersed in this solution to allow bonding between the silane molecules and the hydroxyl groups on the

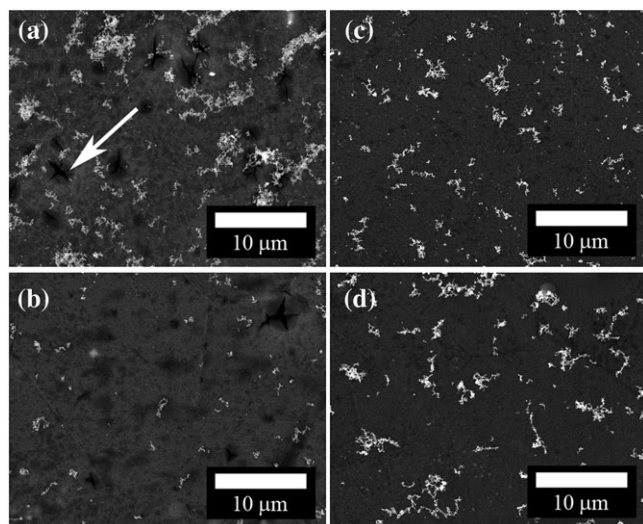


FIGURE 1 Incomplete self-assembly of 50-nm gold nanoparticles on APTMS functionalized WE43 magnesium alloy after a 16-hr immersion. The pH of the gold nanoparticle suspension was modified by adding NaOH to (a) pH = 6 (native pH of the suspension), (b) pH = 8, (c) pH = 10, and (d) pH = 12. Incomplete assembly is shown here to illustrate the effect of the gold nanoparticle suspension on the magnesium surface, which cannot be seen under a dense nanoparticle array. (a) and (b) exhibit corrosion pitting indicated by the white arrow, while (c) and (d) show that this corrosion is passivated while allowing for gold nanoparticle attachment

substrate. In the final step, the substrate is immersed in a citrate-stabilized gold nanoparticle solution, where the particles bond to a functional group on the silane molecule, which can be either an amine functional group for electrostatic bonding or a thiol functional group for chemical bonding. Table 1 lists a summary of this technique for less reactive substrates, as well as the technique for magnesium for comparison purposes.

Self-assembly is possible on corrosion-susceptible materials if corrosion can be prevented. The first two steps of the process (increasing the hydroxyl group concentration and silanization) will be different for any material system. Coincidentally, these have already been established for magnesium as they were originally intended to improve the corrosion resistance.^[13–19] A primary challenge in this work was to prevent

a corrosion reaction between the nanoparticle suspension and magnesium during the long post-silanization soak times required for nanoparticle self-assembly. This soak time was typically on the order of days. It was found that the aforementioned silane layer was not sufficient to prevent corrosion in the gold nanoparticle solution, and self-assembly was therefore not successful without damaging the underlying surface.

In order to prevent corrosion, the nanoparticle suspension was made highly basic by the addition of a strong base, chosen here as sodium hydroxide (NaOH). As indicated by the Pourbaix diagram for magnesium,^[20] corrosion is passivated under highly basic conditions. This passivation allowed the nanoparticles to bond to the surface without corrosion and aided in proper self-assembly. However, it should be noted that the gold nanoparticles degrade over the course of several hours under environments with a pH >12.5. Degradation was characterized by color fading of the nanoparticle solution, wherein the color effect caused by the nanoparticle suspension diminished as the particles became unstable. This effect was not seen at a pH \cong 12, which was still high enough to significantly inhibit the corrosion of magnesium. Therefore, in the current work, the nanoparticle solution pH was adjusted using NaOH to a pH of 12.

Once the self-assembly was successful, high magnification deformation tracking using combined DIC and scanning electron microscopy (SEM) was possible. DIC has already been combined with SEM to quantify local strain concentrations at the microstructural level for other materials.^[12,21–25] By extending SEM-DIC to magnesium, it is possible to visualize how microstructure is related to deformation phenomena such as slip and twinning. An example is shown in this work.

2 | EXPERIMENTAL PROCEDURE

2.1 | Substrate preparation

Gold nanoparticles were randomly self-assembled on pure cast magnesium, cast AM60 (Mg-6Al-0.5Mn), rolled

TABLE 1 Summary of nanoparticle self-assembly steps on less reactive substrates as well as magnesium

Material	Glass	Aluminum oxide	Tin oxide	Aluminum	Magnesium
Reference source	[8]	[8]	[8]	[12]	This paper
Method to increase hydroxyl group concentration on substrate	Clean in piranha solution (4:1 solution of H ₂ SO ₄ and 30% H ₂ O ₂)	Clean in piranha solution (4:1 solution of H ₂ SO ₄ and 30% H ₂ O ₂)	Clean in piranha solution (4:1 solution of H ₂ SO ₄ and 30% H ₂ O ₂) + immerse in NaOH, 5 hr	Alkaline clean in Na ₃ PO ₄ and Na ₂ CO ₃ at 75°C, 60 s	Alkaline clean in NaOH at 50°C, 1 hr
Method for silanization	Immerse in 1:10 mixture of APTMS and methanol for 60 hr	Immerse in neat MPMDMS for 3 hr	Immerse in 1% APMDDES for 10–15 min	Immerse in 1:4 mixture APTMS/MPMDMS and methanol for 24 hr	Immerse in 1% APTMS or 3% MPTMS for 5 min
Immersion time in gold nanoparticle suspension	19.5 hr	12 hr	8 hr	24–120 hr	16–120 hr (corrosion occurs if suspension is untreated)

Note. APTMS = 3-(aminopropyl)trimethoxysilane; MPMDMS = 3-(mercaptopropyl)methyldimethoxysilane; APMDDES = 3-(aminopropyl)methyldiethoxysilane; MPTMS = 3-(mercaptopropyl)trimethoxysilane.

WE43 (Mg-4Y-3Nd/Gd), and extruded ZE20 (Mg-2Zn-0.2Ce). All samples were sectioned with a slow speed saw and cold mounted in epoxy. Next, they were metallographically ground with 600, 800, and 1200 standard ANSI grit silicon carbide paper for 30 s at each grit and then polished with a series of 6 μm , 3 μm , and 1 μm water-based diamond suspensions (LapMaster) for 5 min each on Buehler MicroCloth medium-napped pads. Finally, the samples were subjected to a chemo-mechanical polish with a high pH colloidal alumina/colloidal silica mixture from Buehler (MasterPolish) for 4 min on a Buehler ChemoMet synthetic micro-napped pad, after which they were immediately rinsed with soap and water, rinsed with ethanol, and dried quickly with air. As a final step to improve electron backscatter diffraction (EBSD) analysis for related work, the samples were etched by immersion for 2 s in a mixture of 60 ml ethanol + 20 ml deionized water + 15 ml acetic acid + 5 ml nitric acid, followed by a rinse in ethanol and dried with warm air. This final step did not affect nanoparticle self-assembly and was performed solely to improve EBSD data acquisition. The polished magnesium substrate was then treated to increase the number of hydroxyl groups on the surface in order for the silane to bind correctly. $\text{Mg}(\text{OH})_2$ is stable in highly basic environments; thus, a strong alkaline cleaning solution was used to increase the hydroxyl concentration. The samples were immersed in 1 M NaOH at 50°C for 1 hr, rinsed with water for 30 s, and then blown dry using compressed air.

2.2 | Silane hydrolysis

3-(Aminopropyl)trimethoxysilane (APTMS) or 3-(mercaptopropyl)trimethoxysilane (MPTMS) can be used as a silane coupling agent. These silanes undergo hydrolysis when mixed with water, in which alkoxy moieties are converted to hydroxyl groups that allow bonding with the substrate. Over time, these hydrolyzed silane molecules may self-condense and form long oligomers in solution, which can lead to particle clumping during nanoparticle self-assembly. The ideal silane contains a maximum number of hydrolyzed molecules with minimal self-condensation. The rates at which these reactions take place depend on a number of factors, including silane type, silane concentration, water concentration, and pH. Scott *et al.* characterized the hydrolysis and self-condensation of MPTMS using nuclear magnetic resonance and determined that 6 hr after mixing an acidic 1% MPTMS solution, hydrolysis is nearly complete without appreciable self-condensation.^[13] Ostrovsky reported that aminosilanes such as APTMS hydrolyze within minutes in solution and that self-condensation is resisted.^[17] An APTMS solution was mixed and allowed to sit for a day to ensure complete hydrolysis and then reused for as long as 1 month without changes in the final pattern quality.

2.2.1 | Aminosilanes

A 2.5% APTMS solution with 50 volume percent water and ethanol as the balance was prepared for deposition on magnesium following Ostrovsky.^[17] APTMS was added into a mixture of the water and ethanol at an approximate rate of one pipette drop per second. Ethanol was used as the balance and assisted in dissolving the silane into solution; ethanol was chosen because it does not react with magnesium and is less toxic than methanol.

2.2.2 | Mercaptosilanes

A 1% MPTMS solution with 3 volume percent water and ethanol as the balance was prepared for deposition on magnesium, with concentrations determined from Scott *et al.*^[13] MPTMS was added into a continuously stirred mixture of the water and ethanol at an approximate rate of one pipette drop per second. No additional acid was added to accelerate hydrolysis rates, as it resulted in surface etching. The solution was stirred for 6 hr at a stir rate of 250 rpm.

2.3 | Silane condensation

Samples were immersed into a stirred hydrolyzed silane solution for 5 min at a stir rate of 250 rpm. After immersion, they were removed without rinsing and blown dry with air. The samples were cured in a dry heat oven at 100°C for 1 hr to improve silane adhesion,^[26,27] and the inclusion of this step slightly improved particle density.

2.4 | Gold nanoparticle synthesis and application

Citrate-stabilized gold nanoparticles were synthesized using the Frens technique.^[28] Nanoparticles were chosen to be 50 or 100 nm in diameter but can be scaled from 15 to 150 nm in diameter without significantly affecting self-assembly. The 50-nm nanoparticles were produced by mixing 5 ml of 1 mM hydrogen tetrachloroaurate with 160 ml deionized (DI) water in a continuously stirred Erlenmeyer flask at 380 rpm. The solution was then brought to boiling and 1.75 ml of 1% sodium citrate was added. The solution was kept at boiling and continuously stirred for 5 min. The solution turned blue after 30 s then a deep red that faded to a wine-red color in approximately 2 min. The 100-nm nanoparticles were produced by mixing 5 ml of 1 mM hydrogen tetrachloroaurate with 200 ml DI water in a continuously stirred Erlenmeyer flask at 380 rpm. The solution was then brought to boiling and 1.75 ml of 1% sodium citrate was added. The solution was kept at boiling and continuously stirred for 30 min. The solution turned blue after 60 s then gradually changed to a red-orange color. The particles were cooled to room temperature and stored in brown glassware out of light to prevent decomposition.

To inhibit the corrosion of magnesium from the gold nanoparticles, 1 ml of 0.1 M NaOH was added to 10 ml of the nanoparticle suspension. All glassware was thoroughly

cleaned beforehand to prevent nanoparticle decomposition. If the nanoparticle suspension darkened, changed color, or became transparent over time, this indicated particle decomposition and the solution was discarded. The silanized magnesium was immersed in the nanoparticles with the surface upon which self-assembly was desired facing up for 16 hr. The sample was then rinsed with DI water and dried with compressed air. The resulting nanoparticle array was then imaged using SEM to confirm successful self-assembly. All images were taken using a Tescan Mira 3 SEM with a 15-kV accelerating voltage, 20-mm working distance, and 8-nm spot size. To increase the density of self-assembly, the samples could be reimmersed in the nanoparticle solution for an additional time of up to 120 hr total from initial immersion.

2.5 | In situ mechanical testing of WE43

An example of surface strain measurement is demonstrated on the as-received WE43 hot-rolled plate. Heated treated specimen blanks were machined using wire electro-discharge machining to produce flat dogbone-shaped micro-tensile specimens. The sample was designed so that the tensile loading direction was parallel to the rolling direction (RD). The gage length was 18 mm, sample thickness was 2 mm, and

gage section width was 4.5 mm. The sample was first polished and etched using the same method above.

Electron backscatter diffraction was used to measure grain orientation and identify grain boundaries. EBSD was taken using TSL OIM software on a Tescan Mira3 SEM. The accelerating voltage was 30 kV, the working distance was 18 mm, and the spot size was 61 nm.

The tensile specimens were pulled in tension to failure along the rolling direction under displacement control at an approximate strain rate of 10^{-4} /s. SEM micrographs were taken during the tensile test at various stages of plastic deformation for later correlation and displacement calculation. The displacement was stopped at chosen strain intervals to take images.

3 | RESULTS

3.1 | Nanoparticle self-assembly

As discussed in the Introduction, the gold nanoparticle suspension can corrode the silane-functionalized magnesium and cause cracks and voids on the surface (Figure 1), which can affect the structural integrity of the magnesium. Self-assembly occurs for all pH levels, but the corrosion disappears at a pH of 10 or higher, in correspondence with the

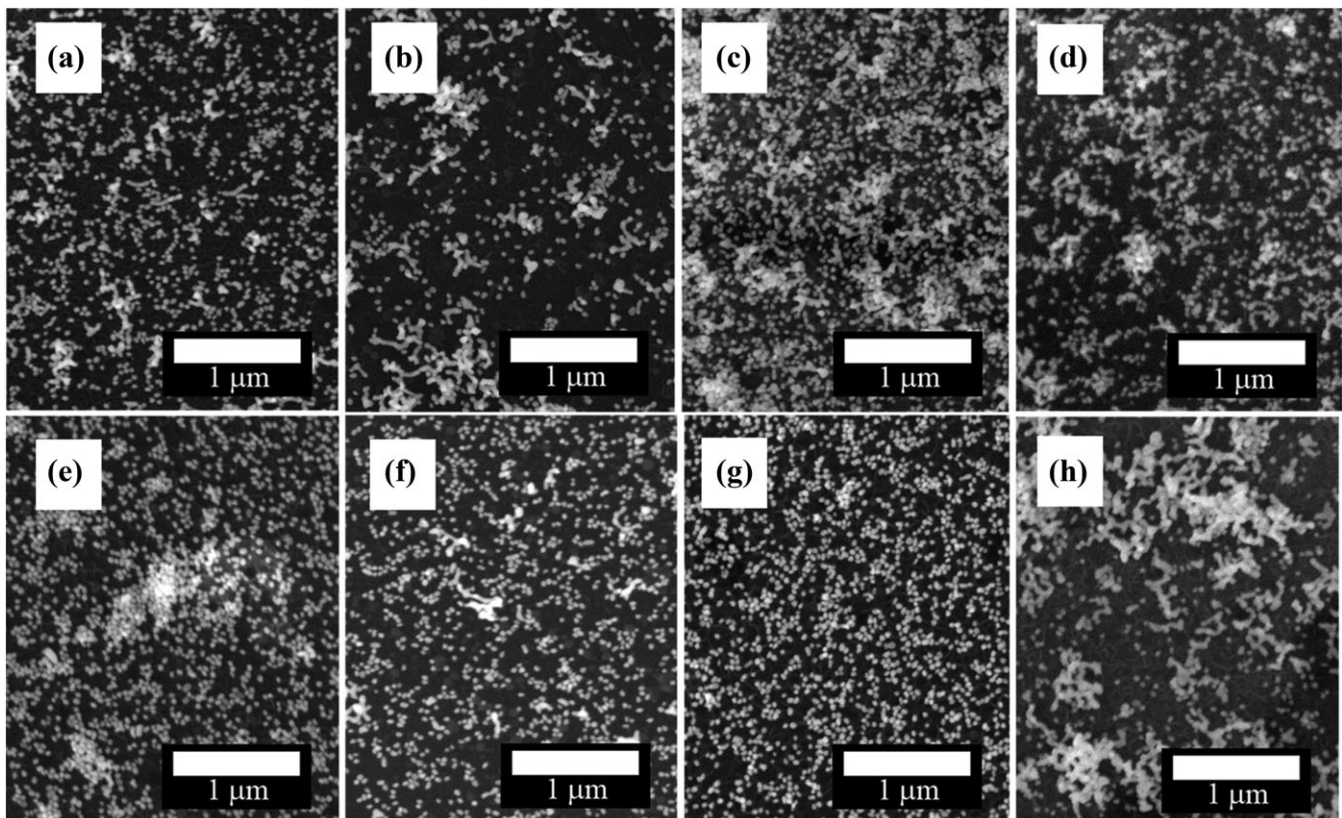


FIGURE 2 Uniform non-ordered distribution of 50-nm gold nanoparticles on various magnesium alloys. The top row includes APTMS treated samples of (a) pure magnesium immersed in the basic gold nanoparticle solution for 16 hr, (b) AM60 immersed for 120 hr, (c) WE43 immersed for 120 hr, and (d) ZE20 immersed for 40 hr. The bottom row includes MPTMS treated samples of (e) pure magnesium immersed in the basic gold nanoparticle solution for 16 hr, (f) AM60 immersed for 96 hr, (g) WE43 immersed for 16 hr, and (h) ZE20 immersed for 96 hr

Pourbaix diagram for magnesium. Interestingly, the self-assembly process is not significantly affected by pH, as evidenced in Figure 1. The driving mechanism for self-assembly on APTMS functionalized magnesium is an electrostatic attraction between the negatively charged citrate groups that stabilize the gold nanoparticles and the positively charged amine groups on the silane. Once the isoelectric point of the amine group is reached ($\sim\text{pH} = 9$), the charge becomes negative and would lead one to believe that no self-assembly would take place due to the missing driving force. However, self-assembly of the particles still occurs. It is unknown why the kinetics are seemingly unaffected by increasing the pH past the isoelectric point of the amine group.

The successful self-assembly of non-ordered nanoparticle distributions on magnesium and three of its alloys is shown in Figure 2. Figure 3 shows the successful self-assembly of two different particle sizes. APTMS and MPTMS yielded similar results, although final soak times in the nanoparticle solution varied between alloy systems and between tests. In general, shorter soak times were needed for pure magnesium and longer soak times were needed for its alloys. APTMS and MPTMS were found to yield comparable results; APTMS was preferred because it was more convenient. The MPTMS

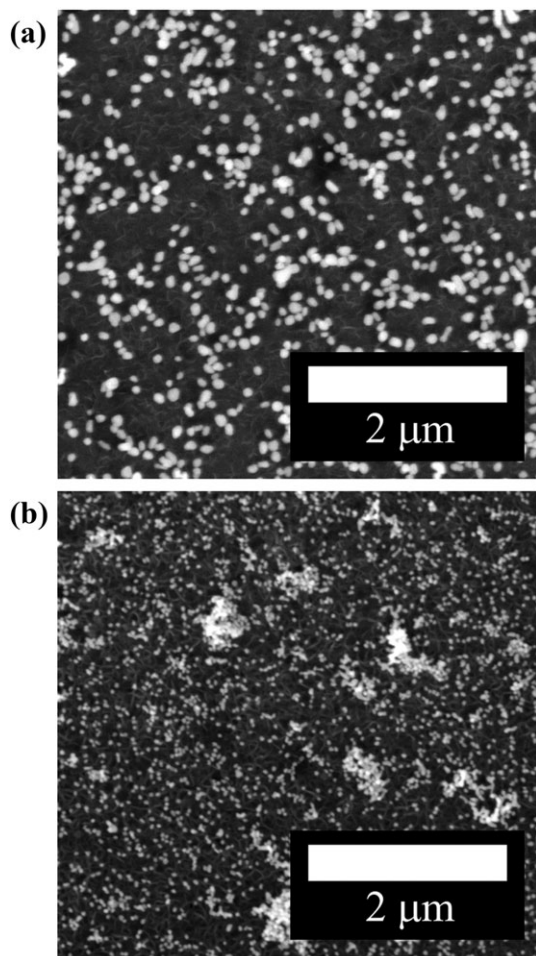


FIGURE 3 Self-assembly of (a) 100-nm gold nanoparticles and (b) 50-nm gold nanoparticles on APTMS functionalized WE43

solution must be stirred for 6 hr and then disposed of immediately after use, whereas the APTMS solution could be reused for up to 1 month.

Nanoparticle self-assembly can exhibit noticeable variation, both sample-to-sample and also across the surface of a single sample. Sample-to-sample variation is evident in Figure 2, and a variation across a sample surface is shown in Figure 4. In Figure 4, one area on the surface exhibited an isotropic pattern with evenly distributed nanoparticles, whereas another area contained significant particle clumping. It is not clear how to prevent this localized particle clumping. If particle clumping occurred, the sample was repolished and the technique was applied again. There was approximately a 20% success rate producing samples on which particle clumping did not significantly occur. In Figure 2, where clumping did not occur, the assembly kinetics varied greatly from sample to sample, even between specimens of the same alloy. Each surface represents the time required to achieve a similar density of particles, and these times were not consistent between the alloys and between tests. Sometimes, a dense nanoparticle array would appear after 16 hr, whereas a 120-hr soak time was needed on other samples, with no trend exhibited between tests. Although the technique was successful for some specimens, more work is needed to improve the consistency of the self-assembly process. Previous work has suggested that contamination on the surface possibly caused particle clumping.^[12] From this study, it is suspected that the problem is obtaining an even silane layer on the surface.

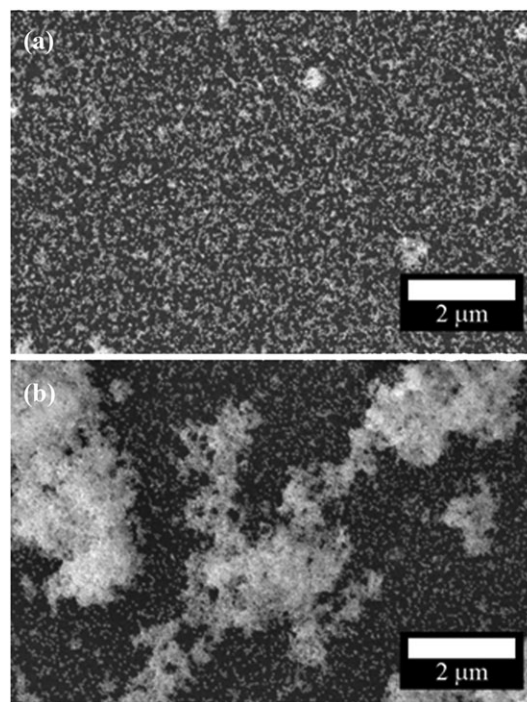


FIGURE 4 Nanoparticle patterns across the sample surface of magnesium alloy WE43, using MPTMS as a silane coupling agent and immersed in basic 50-nm gold nanoparticles for 16 hr. (a) An area where particle distribution is evenly dispersed and isotropic. (b) A different area of the same sample showing significant and unwanted particle clumping. This particle clumping may be due to uneven silane deposition and occurred in $\sim 80\%$ of specimens

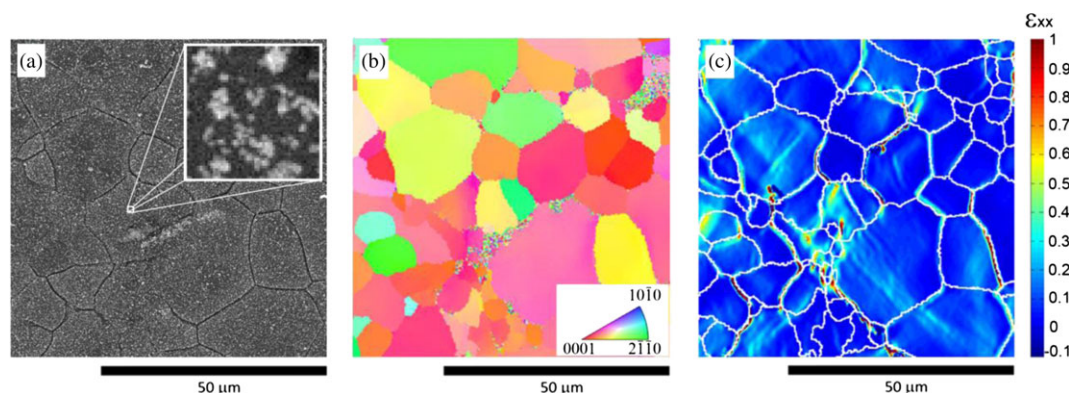


FIGURE 5 Scanning electron microscopy digital image correlation (SEM-DIC) results for an in situ test conducted on the Mg alloy WE43: (a) 100-nm gold nanoparticles self-assembled on the surface, by controlling the pH basicity, to serve as a speckle pattern. Magnified is the subset (size 51) used for DIC, where the width of a pixel in the subset is 33.2 nm. Each nanoparticle is roughly 3×3 pixels for ideal DIC results; (b) electron backscatter diffraction (EBSD) orientation map of the underlying microstructure; (c) full-field strain map during global plastic deformation, showing strong sub-grain heterogeneity in strain distribution with strain tending to localize at grain boundaries. Spatial resolution of the strain calculation is approximately 0.85 microns based on the subset size

Removal of the substrate from the silane solution resulted in a rainbow sheen on the surface, suggesting that the silane layer thickness varies. It is suspected that a variance in silane thickness may result in differing particle densities and particle clumping. Furthermore, it was seen that adding NaOH to the nanoparticles can still result in proper self-assembly, despite the fact that the charge of the amine group switches once the isoelectric point is reached and should lead to electrostatic repulsion between the nanoparticles and the substrate APTMS layer. Further understanding of the chemistry may be needed to improve consistency.

Despite the consistency issues, this technique is a promising solution for patterning magnesium and other corrosion susceptible materials. The key lies in controlling corrosion during the long soak time in the nanoparticle suspension. In theory, established corrosion inhibitors may be added to the nanoparticle solution for any corrosion-susceptible material (assuming those inhibitors do not break down the nanoparticles) and allow for nanoparticle self-assembly on a wide range substrates.

3.2 | In situ mechanical testing

Figure 5a shows a successful self-assembly of 100-nm nanoparticles on the magnesium alloy WE43 for use as a speckle pattern during SEM combined with DIC. The acid etch used in this study aggressively attacks the grain boundaries, resulting in a deep grain boundary etch that can be seen beneath the speckle pattern and is ideal for demonstration purposes of this technique. In subsequent studies of the microstructural response to plastic deformation, a less aggressive etch that does not attack grain boundaries preferentially is used. The speckle pattern enables the quantification of strain at high magnification using SEM-DIC, as shown in Figure 5c, where there is strong sub-grain heterogeneity in strain distribution with strain tending to localize at grain boundaries. This localization is partly due to the stress concentration at the grain boundaries from the etchant.

4 | SUMMARY

The successful self-assembly of gold nanoparticles on pure magnesium and three of its alloys was achieved through a passivated corrosion reaction with a gold nanoparticle suspension. To the best of the authors' knowledge, this is the first self-assembly of nanoparticles on magnesium that has been reported. This technique is amendable to other corrosion-susceptible materials if corrosion can be prevented during the long immersion in the nanoparticle suspension via pH adjustment or the addition of other established corrosion inhibitors. The proposed approach is inexpensive, provides dense coverage, and can be easily scaled by adjusting the size of the nanoparticles.

ACKNOWLEDGMENTS

This work was supported by the U.S. Department of Energy, Office of Basic Energy Sciences, Division of Materials Sciences and Engineering under Award #DE-SC0008637 as part of the Center for PRedictive Integrated Structural Materials Science (PRISMS) at the University of Michigan. We gratefully acknowledge John Allison (University of Michigan) for his helpful discussions and insight and Robert Kubic (General Motors Research) for his assistance and advice on polishing magnesium alloys.

REFERENCES

- [1] A. Shipway, E. Katz, I. Willner, *ChemPhysChem* **2000**, *1*, 18.
- [2] J. Weissman, H. Sunkara, A. Tse, S. Asher, *Science* **1996**, *274*, 959.
- [3] M. Musick, D. Peña, S. Botsko, T. M. McEvoy, J. N. Richardson, J. Natan, *Langmuir* **1999**, *15*, 844.
- [4] S. Green, J. Stokes, M. Hostetler, J. Pietron, R. W. Murray, *J Phys Chem B* **1997**, *101*, 2663.
- [5] T. Sato, H. Ahmed, D. Brown, B. F. G. Johnson, *J. Appl. Phys.* **1997**, *82*, 696.
- [6] D. L. Klein, P. L. McEuen, J. E. B. Katari, R. Roth, A. P. Alivisatos, *Appl. Phys. Lett.* **1996**, *68*, 2574.
- [7] R. Andres, T. Bein, M. Dorogi, S. Feng, J. I. Henderson, C. P. Kubiak, W. Mahoney, R. G. Osifchin, R. Reifenberger, *Science* **1996**, *272*, 1323.

- [8] K. C. Grabar, K. J. Allison, B. E. Baker, R. M. Bright, K. R. Brown, R. G. Freeman, A. P. Fox, C. D. Keating, M. D. Musick, M. J. Natan, *Langmuir* **1996**, *12*, 2353.
- [9] R. G. Freeman, K. C. Grabar, K. J. Allison, R. M. Bright, J. A. Davis, A. P. Guthrie, M. B. Hommer, M. A. Jackson, P. C. Smith, D. G. Walter, M. J. Natan, *Science* **1995**, *267*, 1629.
- [10] G. Chumanov, K. Sokolov, B. W. Gregory, T. M. Cotton, *J Phys Chem.* **1995**, *99*, 9466.
- [11] K. Grabar, R. Freeman, M. Hommer, M. Natan, *Anal. Chem.* **1995**, *67*, 1217.
- [12] A. D. Kammers, S. Daly, *Exp Mech.* **2013**, *53*, 1333.
- [13] A. F. Scott, J. E. Gray-Munro, J. L. Shepherd, *J. Colloid Interface Sci.* **2010**, *343*, 474.
- [14] F. Zucchi, A. Frignani, V. Grassi, A. Balbo, G. Trabanelli, *Mater. Chem. Phys.* **2008**, *110*, 263.
- [15] F. Zucchi, V. Grassi, A. Frignani, C. Monticelli, G. Trabanelli, *Surf Coatings Technol.* **2006**, *200*, 4136.
- [16] A. Scott, J. E. Gray-Munro, *Thin Solid Films* **2009**, *517*, 6809.
- [17] I. Ostrovsky, Treatment for improved magnesium surface corrosion-resistance, US Patent 7,011,719. (**2006**).
- [18] J. Kim, K. C. Wong, P. C. Wong, S. A. Kulinich, J. B. Metson, K. A. R. Mitchell, *Appl. Surf. Sci.* **2007**, *253*, 4197.
- [19] M. F. Montemor, M. G. S. Ferreira, *Electrochim. Acta* **2007**, *52*, 7486.
- [20] M. Pourbaix, "Atlas of Electrochemical Equilibria in Aqueous Solutions, 2nd English," 139. (**1974**).
- [21] A. D. Kammers, S. Daly, *Meas. Sci. Technol.* **2011**, *22*, 125501, DOI: 10.1088/0957-0233/22/12/125501.
- [22] M. A. Sutton, N. Li, D. Garcia, N. Cornille, J. J. Orteu, S. R. McNeil, H. W. Schreir, X. Li, *Meas. Sci. Technol.* **2006**, *17*, 2613, DOI: 10.1088/0957-0233/17/10/012.
- [23] M. A. Sutton, N. Li, D. C. Joy, A. P. Reynolds, X. Li, *Exp Mech.* **2007**, *47*, 775, DOI: 10.1007/s11340-007-9042-z.
- [24] M. A. Sutton, N. Li, D. Garcia, N. Cornille, J. J. Orteu, S. R. McNeil, H. W. Schreir, X. Li, A. P. Reynolds, *Exp Mech.* **2007**, *47*, 789, DOI: 10.1007/s11340-007-9041-0.
- [25] M. Kimiecik, J. W. Jones, S. Daly, *Mater. Lett.* **2013**, *95*, 25, DOI: 10.1016/j.matlet.2012.12.063.
- [26] G. Pan, D. W. Schaefer, *Thin Solid Films* **2006**, *503*, 259.
- [27] G. Li, X. Wang, A. Li, W. Wang, L. Zheng, *Surf Coatings Technol.* **2007**, *201*, 9571.
- [28] G. Frens, *Nature* **1973**, *241*, 20.

How to cite this article: Githens A., and Daly S. Patterned corrosion-susceptible metallic alloys for digital image correlation in a scanning electron microscope. *Strain* 2017;53:e12215; DOI: 10.1111/str.12215