

Received Date : 04-Aug-2016

Revised Date : 05-Sep-2016

Accepted Date : 25-Nov-2016

Article type : Original Article

**Efficacy and Safety of Simeprevir and Sofosbuvir With and Without Ribavirin in Subjects With Recurrent Genotype 1 Hepatitis C Post-Orthotopic Liver Transplant: The Randomized GALAXY Study**

Jacqueline G. O’Leary, MD<sup>1</sup>; Robert J. Fontana, MD<sup>2</sup>; Kimberly Brown, MD<sup>3</sup>; James R. Burton Jr., MD<sup>4</sup>; Roberto Firpi-Morell, MD, MS<sup>5</sup>; Andrew Muir, MD<sup>6</sup>; Christopher O’Brien, MD<sup>7</sup>; Mordechai Rabinovitz, MD<sup>8</sup>; K. Rajender Reddy, MD<sup>9</sup>; Robert Ryan, MS<sup>10</sup>; Adam Shprecher, PharmD<sup>11</sup>; Shirley Villadiego, MD<sup>11</sup>; Avinash Prabhakar, MD<sup>11</sup>; Robert S. Brown Jr., MD<sup>12</sup>

<sup>1</sup>Department of Medicine, Baylor University Medical Center, Dallas, TX, USA;

<sup>2</sup>Department of Internal Medicine, University of Michigan, Ann Arbor, MI, USA;

<sup>3</sup>Department of Medicine, Henry Ford Hospital, Detroit, MI, USA; <sup>4</sup>Department of Medicine, University of Colorado Denver, Aurora, CO, USA; <sup>5</sup>Department of Medicine, University of Florida, Gainesville, FL, USA; <sup>6</sup>Department of Medicine, Duke University Medical Center, Durham, NC, USA; <sup>7</sup>Department of Medicine, University of Miami School of Medicine, Miami, FL, USA; <sup>8</sup>Department of Medicine, University of Pittsburgh, Pittsburgh, PA, USA; <sup>9</sup>Department of Medicine, University of Pennsylvania, Philadelphia, PA, USA; <sup>10</sup>Janssen Research & Development, Titusville, NJ, USA; <sup>11</sup>Janssen Scientific Affairs, Titusville, NJ, USA; <sup>12</sup>Department of Medicine, Weill Cornell Medical Center, New York, NY, USA.

This is the author manuscript accepted for publication and has undergone full peer review but has not been through the copyediting, typesetting, pagination and proofreading process, which may lead to differences between this version and the [Version of Record](#). Please cite this article as [doi: 10.1111/tri.12896](https://doi.org/10.1111/tri.12896)

This article is protected by copyright. All rights reserved

**Correspondence information:**

Robert S. Brown Jr.  
Weill Cornell Medicine  
Center for Liver Disease  
1305 York Avenue, 4th Floor  
New York, NY 10021, USA  
Phone: +1-646-962-5330  
Fax: +1-646-962-0363  
rsb2005@med.cornell.edu

**Authorship**

J.G.O., R.J.F., K.B., J.R.B., R.F.-M., A.M., C.O., M.R., K.R.R., and R.S.B. contributed to the design and/or conduct of the study, and to the acquisition and interpretation of data. R.R. contributed to data analysis and interpretation, and A.S. contributed to data interpretation. S.V. contributed to the conduct of the study and data interpretation. A.P. contributed to the design and conduct of the study, and to the acquisition and interpretation of the data. All authors critically reviewed the manuscript and approved the final version.

**Disclosures**

J.G.O. has served as a consultant for Gilead and AbbVie, and given sponsored lectures for Gilead and AbbVie. R.J.F. has received grants from Gilead, Bristol-Myers Squibb, and Janssen; and has given sponsored lectures for the Chronic Liver Disease Foundation. K.B. has received grants from Gilead, AbbVie, Janssen, Hyperion, Exalenz, and Duke Research; has given sponsored lectures for Bristol-Myers Squibb, AbbVie, and Gilead; and served on advisory boards for Gilead, Merck, Janssen, AbbVie, and Bristol-Myers Squibb. J.R.B. has received grants from AbbVie, Gilead, and Janssen. R.F.-M. has received grants from Gilead, Intercept, Merck, AbbVie, and Conatus; and has served as a medical monitor for Bristol-Myers Squibb. A.M. has received grants from AbbVie, Bristol-Myers Squibb, Gilead, Janssen, and Merck; and

served on advisory boards for AbbVie, Bristol-Myers Squibb, Gilead, Janssen, and Merck. C.O. and M.R. have no disclosures to declare. K.R.R. has received grants from Janssen, Gilead, Merck, Bristol-Myers Squibb, and AbbVie (money paid to institution); and served on advisory boards for Janssen, Gilead, Merck, Bristol-Myers Squibb, and AbbVie. R.R., A.S., S.V., and A.P. are full-time employees of Janssen. R.S.B. has received grants from AbbVie, Bristol-Myers Squibb, Gilead, Janssen, and Merck; and has served as a consultant for AbbVie, Bristol-Myers Squibb, Gilead, Janssen, and Merck.

### **Funding**

This study was funded by Janssen Scientific Affairs, LLC. Medical writing support was provided by Courtney St. Amour, PhD, of MedErgy, and was funded by Janssen Scientific Affairs, LLC.

### **Running title**

Simeprevir and sofosbuvir for hepatitis C infection post-transplant

### **Keywords**

Infection–Hepatitis B, C; Liver Clinical–Other

### **Abbreviations**

**AE**, adverse event; **AUC<sub>24h</sub>**, area under the concentration-time curve from time of administration to 24 hours post-dose; **BMI**, body mass index; **CI**, confidence interval; **C<sub>max</sub>**, maximum plasma concentration; **C<sub>ss,av</sub>**, average steady-state plasma concentration; **CTP**, Child-Turcotte-Pugh; **C<sub>trough</sub>**, trough plasma concentration; **EOT**, end of treatment; **EQ-5D**, EuroQoL 5-Dimensions; **HCV**, hepatitis C virus; **HCV-SIQv4**, Hepatitis C Symptom and Impact Questionnaire version 4; **ITT**, intent-to-treat; **LLQ**, lower limit of quantitation; **non**, nonrandomized subgroup; **PRO**, patient-reported outcome; **rand**, randomized subgroup; **RBV**, ribavirin; **SMV**, simeprevir; **SOF**, sofosbuvir; **SVR4**, sustained virologic response 4 weeks after the end of treatment;

**SVR12**, sustained virologic response 12 weeks after the end of treatment; **VAS**, visual analog scale.

## **Abstract**

This prospective, randomized, phase 2 study in subjects with recurrent hepatitis C virus (HCV) genotype 1 post-orthotopic liver transplant evaluated once-daily simeprevir 150mg+sofosbuvir 400mg, with and without ribavirin 1,000mg. Primary endpoint was proportion of subjects with Week 12 sustained virologic response (SVR12). Thirty-three subjects without cirrhosis were randomized 1:1:1 into three arms (stratified by geno/subtype and Q80K): Arm 1, simeprevir+sofosbuvir+ribavirin, 12 weeks; Arm 2, simeprevir+sofosbuvir, 12 weeks; Arm 3, simeprevir+sofosbuvir, 24 weeks; 13 additional subjects (2 with cirrhosis, 11 without cirrhosis) entered Arm 3. All 46 subjects received at least one dose of study drug; median age, 60 years; 73.9% male; 80.4% white; 71.7% geno/subtype 1a (12 [36.4%] of these had Q80K); median 4.5 years post-transplant. Among randomized subjects, SVR12 was achieved by 81.8% in Arm 1, 100% in Arm 2, and 93.9% in Arm 3; two subjects did not achieve SVR12: one viral relapse (follow-up Week 4; Arm 1) and one missing follow-up Week 12 data. In total, five subjects had a serious adverse event, considered unrelated to treatment per investigator. Simeprevir exposure was increased relative to the non-transplant setting, but not considered clinically relevant. Simeprevir+sofosbuvir treatment, with or without ribavirin, was efficacious and well tolerated (ClinicalTrials.gov Identifier: NCT02165189).

## **Introduction**

Hepatitis C virus (HCV) infection is a leading cause of chronic liver disease and liver transplantation [1-3]. Compared with conventional interferon-based therapies [4-6] and boceprevir/telaprevir-based triple therapies [7-12], newer direct-acting antiviral agents have been shown to improve outcomes for liver transplant recipients with recurrent HCV infection [13-19]. In one study of 34 post-liver transplant recipients without cirrhosis, treatment with ombitasvir/paritaprevir/ritonavir + dasabuvir + ribavirin for 24 weeks resulted in a sustained virologic response 12 weeks after the end of treatment (SVR12) rate of 97% [13]; an SVR12 rate of 95% was seen in another study (n = 53) evaluating treatment with daclatasvir + sofosbuvir + ribavirin [19]. In a third study (n = 229),

ledipasvir/sofosbuvir + ribavirin for 12 or 24 weeks demonstrated SVR12 rates ranging from 96% to 98% in subjects without cirrhosis or with Child-Turcotte-Pugh (CTP) class A cirrhosis, 85% to 88% in subjects with CTP class B cirrhosis, and 60% to 75% in subjects with CTP class C cirrhosis [18]. Despite such favorable outcomes, all approved regimens require the use of ribavirin, which has been associated with safety/tolerability concerns, such as anemia, fatigue, headache, nausea, and hyperbilirubinemia [14,20-22]. In addition, the side effects of ribavirin may result in substantial healthcare costs (eg, laboratory testing, clinic visits, medication) [23].

Simeprevir is a once-daily, oral, HCV NS3/4A protease inhibitor approved in the non-transplant setting for the treatment of chronic HCV genotype 1 infection as part of combination antiviral therapy [24,25]. Retrospective studies of simeprevir and sofosbuvir (HCV NS5B nucleotide polymerase inhibitor), with or without ribavirin, in HCV genotype 1–infected liver transplant recipients have demonstrated favorable efficacy and safety profiles over a 12-week treatment period [15-17,26,27]. The vast majority (73%-100%) of subjects in these studies did not receive treatment with ribavirin; SVR12 rates ranged from 88% to 94%. In a real-world setting (HCV-TARGET registry), simeprevir and sofosbuvir treatment for 12 or 24 weeks, with or without ribavirin, in post-liver transplant recipients showed an SVR12 rate of 88% [28].

In this phase 2 clinical study (GALAXY; ClinicalTrials.gov Identifier: NCT02165189), the efficacy and safety of simeprevir in combination with sofosbuvir, with or without ribavirin, were evaluated in post-orthotopic liver transplant recipients with recurrent HCV genotype 1 infection. The emergence of resistance-associated HCV genotype variants and the pharmacokinetics of simeprevir and sofosbuvir were also assessed. These are the first prospective, multicenter data to be reported on post-liver transplant recipients treated with simeprevir and sofosbuvir, with or without ribavirin.

## Materials and Methods

### *Study Design and Population*

This was a phase 2, prospective, multicenter, randomized, open-label study that enrolled non-pregnant adults who were  $\geq 18$  years of age with recurrent HCV genotype 1 infection and an HCV RNA level  $> 10,000$  IU/mL at baseline (study dates: 11 August 2014 to 10 November 2015). Subjects must have had a primary orthotopic liver transplant (living or deceased donor)  $\geq 6$  months to 15 years before enrollment, and were required to be on stable immunosuppression for  $\geq 3$  months before screening. Subjects' renal function, as measured by the Cockcroft Gault formula, must have been  $> 30$  mL/min. Assessment of liver fibrosis (liver graft biopsy or non-invasive procedure [29]) within 12 months of or at the screening visit, except for subjects with a diagnosis of cirrhosis, was required. Key exclusion criteria included receiving treatment with a direct-acting antiviral drug for HCV infection (prior treatment with interferon or peginterferon, with or without ribavirin, was allowed if completed  $\geq 3$  months before screening); hepatic decompensation; and HCV NS3 resistance-associated mutations identified as conferring resistance to simeprevir, except Q80K.

Initially, 33 subjects without cirrhosis were enrolled and randomized 1:1:1 using an interactive voice or web response system into one of three treatment arms; the randomization was balanced by using randomly permuted blocks and was stratified by HCV geno/subtype and NS3 polymorphism (geno/subtype 1a with Q80K versus geno/subtype 1a without Q80K versus geno/subtype 1b). The study controlled for the use of ribavirin; the three treatment arms were as follows: Arm 1, once-daily simeprevir 150 mg + once-daily sofosbuvir 400 mg + weight-based ribavirin (1,000 mg daily dose for subjects weighing  $< 75$  kg; 1,200 mg for subjects weighing  $\geq 75$  kg) for 12 weeks; Arm 2, once-daily simeprevir 150 mg + once-daily sofosbuvir 400 mg for 12 weeks; Arm 3, once-daily simeprevir 150 mg + once-daily sofosbuvir 400 mg for 24 weeks. Upon completion of randomization, enrollment into Arm 3 was opened to all eligible subjects, regardless of the presence of cirrhosis, until a total of 46 subjects were enrolled; this allowed subjects with cirrhosis to enter the study and receive the recommended 24 weeks of treatment [24,25]. For all subjects, the screening period was a maximum of

six weeks and treatment was followed by a 12-week post-treatment follow-up period. Study drugs were discontinued for subjects with viral breakthrough. Choice of immunosuppressant was at the investigator's discretion, excluding cyclosporine due to a potential pharmacokinetic interaction with simeprevir [24,25]. See **Supporting Information** for further study design and population details.

The study protocol was reviewed by an institutional review board. This study was conducted in accordance with the ethical principles that have their origin in the Declaration of Helsinki and that are consistent with Good Clinical Practices and applicable regulatory requirements. Subjects provided written informed consent to participate in the study.

#### *Efficacy Assessments*

The primary efficacy endpoint was the proportion of subjects who achieved SVR12. Secondary efficacy endpoints were on-treatment virologic response at Weeks 2, 4, 8, and 12 (all subjects) and Weeks 16, 20, and 24 (subjects in Arm 3); the proportion of subjects who achieved sustained virologic response four weeks after the end of treatment (SVR4); and the incidence of virologic breakthrough and relapse. In addition, subgroup analyses were performed for SVR12 rates based on subject characteristics, including presence of baseline HCV polymorphisms (NS3 Q80K and NS5A positions of interest; **Supporting Information**) and use of gastric acid-reducing agents. The latter were of interest because they may have an effect on antiviral agent pharmacokinetics [30].

#### *Resistance Monitoring*

Samples were collected at baseline and at the time of virologic failure during therapy to monitor for the emergence of HCV resistance-associated variants, with sequencing of HCV NS3, NS5A, and NS5B polymorphisms at baseline and NS3 and NS5B resistance-associated variants at the time of failure (**Supporting Information**).

### *Pharmacokinetic Assessments*

Pharmacokinetic sampling of simeprevir and GS-331007 (the major sofosbuvir metabolite [31]; hereinafter referred to as “sofosbuvir” for simplicity) trough levels occurred on Days 28, 56, and 84 for all subjects and also on Day 168 for subjects in Arm 3. The following parameters were assessed: trough plasma concentration ( $C_{\text{trough}}$ ), maximum plasma concentration ( $C_{\text{max}}$ ), average steady-state plasma concentration ( $C_{\text{ss,av}}$ ), and area under the concentration-time curve from time of administration to 24 hours post-dose ( $\text{AUC}_{24\text{h}}$ ). The model-predicted relationship between creatinine clearance at baseline and the central clearance of sofosbuvir, and the relationship between creatinine clearance at baseline and exposure to sofosbuvir (smoothing line computed using loess smoothing, implemented in R-software), were also evaluated.

Blood samples for the determination of immunosuppressant plasma concentrations were collected twice during the first week of treatment, weekly during the next three weeks, and per local institutional protocol thereafter. Immunosuppressant dose adjustments during therapy were also described.

### *Safety Assessments*

Safety evaluations included monitoring of adverse events (AEs; for severity grading, see **Supporting Information**), clinical laboratory tests, vital sign measurements, and physical examinations. Diagnosis of rejection was to be made by a local pathologist per institution protocol.

### *Patient-reported Outcomes (PROs)*

PROs were assessed using two validated instruments: the EuroQoL 5-Dimensions (EQ-5D) questionnaire [32] and the Hepatitis C Symptom and Impact Questionnaire version 4 (HCV-SIQv4), a new PRO tool designed specifically for HCV-infected subjects (**Supporting Information**).



## *Statistical Analyses*

The intent-to-treat (ITT) population was defined as all subjects who took at least one dose of study drug. Within the ITT population, randomized subjects were evaluated for efficacy and PRO outcomes. Pharmacokinetics and safety were evaluated in all ITT subjects. SVR12 rates were tabulated per treatment arm. For determination of sample size, with a target SVR12 rate of 80%, 11 subjects would have allowed the SVR12 rate to be estimated in Arms 1 and 2 with a two-sided 95% confidence interval (CI; calculated using a normal approximation with continuity correction) width of 50.8%; thus, 80% (46.3%, 97.1%) and 23 subjects in Arm 3 would have allowed the SVR12 rate to be estimated with a two-sided 95% CI width of 35.3%, thus 80% (58.2%, 93.6%).

Secondary endpoints were summarized using descriptive statistics; SVR4, viral breakthrough, and viral relapse were tabulated per treatment arm. Relevant changes in viral sequence in the HCV NS3 and NS5B regions were summarized. Pharmacokinetic analyses included all subjects who underwent pharmacokinetic sampling at any point during the study. Descriptive statistics are provided for the pharmacokinetic parameters of immunosuppressants, simeprevir, and sofosbuvir; for simeprevir and sofosbuvir, parameters were analyzed using a Bayesian feedback analysis (**Supporting Information**). PRO endpoints were analyzed using descriptive statistics; mean and median changes from baseline are reported.

## **Results**

### *Study Population*

A total of 66 individuals were screened; 20 of these individuals were excluded due to not meeting  $\geq 1$  of the inclusion criteria, while 46 were enrolled in the study and took at least one dose of study drug (**Figure 1**). Among all subjects, the median (range) age was 60.0 (49-68) years and the majority were male (73.9%) and white (80.4%; **Table 1**). Two (4.3%) subjects had cirrhosis, and the median time since liver transplant was 4.5 years. Of the 33 (71.7%) subjects with HCV geno/subtype 1a, 12 (36.4%) had Q80K. The baseline median HCV RNA was ~6,650,000 IU/mL and 80.4% of all subjects had plasma HCV RNA >800,000 IU/mL. Most subjects presented with less advanced liver

disease (ie, METAVIR grade A1 [45.7%] or A2 [26.1%] and METAVIR fibrosis stage F0/F1 [19.6%] or F2 [50.0%]).

Overall, 44 subjects (95.7%) completed study drug and 43 subjects (93.5%) completed the study. For the 33 randomized subjects, the median (range) actual treatment durations were as follows: Arm 1, 12.0 (8.9-12.1) weeks; Arm 2, 12.0 (11.3-13.0) weeks; Arm 3, 24.0 (24.0-25.6) weeks.

### *Efficacy*

On-treatment virologic response over time among randomized subjects is shown in **Figure 2A**. SVR12 was achieved by 31 of 33 randomized subjects (93.9%), including nine of 11 (81.8%) in Arm 1, 11 of 11 (100%) in Arm 2, and 11 of 11 (100%) in Arm 3 (**Figure 2B**); the same virologic response rates were observed at the SVR4 time point. One subject did not achieve SVR12 due to viral relapse (at follow-up Week 4; see below) and another for non-virologic reasons (suicide).

For randomized subjects who had HCV geno/subtype 1a infection and Q80K polymorphism data, the SVR12 rate was 100% (9/9; 95% CI, 66.4%-100%) for those with the Q80K polymorphism and 85.7% (12/14; 95% CI, 57.2%-98.2%) for those without. The SVR12 rate was 90.0% (18/20; 95% CI, 68.3%-98.8%) for subjects with an NS5A polymorphism and 100% (11/11; 95% CI, 71.5%-100%) for those without. The SVR12 rate was 95.0% (19/20; 95% CI, 75.1%-99.9%) for subjects who used gastric acid-reducing agents and 92.3% (12/13; 95% CI, 64.0%-99.8%) for those who did not.

No subjects experienced viral breakthrough. One subject in Arm 1 experienced viral relapse at the follow-up Week 4 time point. This subject was a 53-year-old white male with a body mass index of 29 kg/m<sup>2</sup>, baseline viral load of 4,130,000 IU/mL, HCV geno/subtype 1a without NS3 Q80K, and METAVIR score F2. It had been 7.7 years since transplant and the subject was treatment-experienced with prior response

categorized as “no response”; there were no emerging HCV NS3 or NS5B mutations at the time of failure. No other subjects had resistance testing performed.

### *Pharmacokinetic Assessments*

Exposures to both simeprevir and sofosbuvir were similar across treatment arms among all subjects (**Table 2**). A correlation between sofosbuvir exposure and creatinine clearance was observed; central clearance of sofosbuvir increased with increasing creatinine clearance at baseline, and exposure to sofosbuvir (AUC/C<sub>max</sub>) increased with decreasing creatinine clearance (**Figure 3**).

### *Safety*

Overall, most subjects (97.8%) reported an AE during the treatment phase; AEs were balanced across treatment groups (**Table 3**). The most common AEs (>25% of total population) during treatment were headache (37.0%) and fatigue (34.8%). Five (10.9%) subjects had serious AEs, including one that was fatal (suicide); none were considered by the investigator to be related to study drug. Two AEs occurred during treatment that were grade  $\geq 2$  in severity and considered possibly related to simeprevir: fatigue and increased gamma-glutamyltransferase. One transplant rejection occurred at follow-up Week 12 in Arm 3. Of note, this subject’s tacrolimus plasma level fell from 13.8  $\mu\text{g/L}$  at baseline to 3.2  $\mu\text{g/L}$  at the time of rejection. Treatment-induced resolution occurred within six days.

Four (8.7%) subjects had an AE of photosensitivity (one subject in Arm 2 and three subjects in Arm 3); all events were grade 1 in severity. Three (6.5%) subjects, all in Arm 1, had anemia; no growth factors were used for treatment. There were four laboratory parameters for which at least one subject had an abnormality with grade 3 severity, including amylase level (two subjects; one each in Arms 2 and 3), gamma-glutamyltransferase (one subject; Arm 3), hyperbilirubinemia (one subject; Arm 1), and hyperglycemia (one subject; Arm 3). There were no grade 4 laboratory abnormalities.

Tacrolimus plasma levels over time are shown in **Figure 4**. A dose adjustment of immunosuppressants (any time during the study) occurred in 15 of 46 (32.6%) subjects: five in Arm 1, one in Arm 2, and nine in Arm 3. For one subject in Arm 3, mycophenolate mofetil was discontinued at screening, and tacrolimus was continued unchanged. For two subjects, either the original or new dose was not known (but both were counted as having a dose adjustment). Apart from these dose adjustments, there were no other changes in immunosuppressant regimens.

### *PROs*

The mean HCV-SIQv4 overall body system score at baseline was similar across treatment arms for randomized subjects, and there were minimal changes from baseline to follow-up Week 12 (**Table S1**). At baseline, the mean EQ-5D visual analog scale (VAS) score was comparable across treatment arms (**Table S2**). These scores fluctuated over time; the changes were not considered clinically important, with the exception of a small improvement in EQ-5D VAS score at follow-up Week 12 for subjects in Arm 3. Median changes from baseline over time are shown in **Figure S1**. Overall, there were no clear patterns of improvement or worsening in scores over time or differences between treatment arms in PRO data.

### **Discussion**

GALAXY is the first prospective, multicenter study that evaluated simeprevir and sofosbuvir treatment, with or without ribavirin, in the transplant setting. This regimen was efficacious in liver transplant recipients with recurrent HCV genotype 1 infection, consistent with results in a non-transplant setting [33]. SVR12 was achieved by 81.8% of subjects in Arm 1, 100% in Arm 2, and 100% in Arm 3. The relatively lower SVR12 rate in Arm 1 versus Arms 2 and 3 was due to missing data from one subject (9.1%). The efficacy of simeprevir in this population was further supported by on-treatment virologic response data. No subjects had viral breakthrough and only one subject (Arm 1) had viral relapse. For these subjects, the majority of whom did not have cirrhosis, similarly high rates of SVR12 were observed in those with HCV geno/subtype 1a

regardless of the presence of Q80K, consistent with results in the non-transplant setting [33].

It is clinically important that all subjects (11/11) treated with a ribavirin-free regimen of simeprevir and sofosbuvir for 12 weeks achieved SVR12 because most liver transplant recipients tolerate ribavirin poorly and some cannot tolerate ribavirin at any dose [14,21]. Furthermore, simeprevir and sofosbuvir, with or without ribavirin, is an HCV NS5A inhibitor-free regimen; as NS5A inhibitors have a low barrier to resistance and variants tend to persist, this regimen may be an option for individuals with HCV NS5A variants [34-36]. Notably, most GALAXY subjects had an HCV NS5A polymorphism and the presence of these polymorphisms did not have a substantial impact on SVR12 achievement.

Evaluation of potential pharmacokinetic interaction between antiviral agents and commonly used concomitant medications is important and for post-transplant recipients, immunosuppressant use is of particular interest. In a previous study of post-liver transplant recipients (SATURN), simeprevir exposure was increased 581% during concomitant cyclosporine A use; based on this, cyclosporine A is not recommended for coadministration with simeprevir [24]. The same study showed a 185% increase in simeprevir exposure with concomitant tacrolimus use, but this result was not considered clinically significant [24]. Based on these findings, the current study did not allow for use of cyclosporine A.

The GALAXY study is the first to describe steady-state simeprevir and sofosbuvir exposures in post-liver transplant recipients with HCV genotype 1 infection. Subjects' exposures to these agents were similar regardless of treatment arm; however, compared with similar data collected in a non-transplant setting (COSMOS study) [33], exposures were numerically higher (simeprevir  $AUC_{24h}$  values were 26,820 and 44,300 ng·h/mL, and sofosbuvir  $AUC_{24h}$  values were 10,801 and 17,884 ng·h/mL, in COSMOS and GALAXY, respectively). Given the large variability in the current study, these exposure differences were not considered clinically relevant. It is possible that the

increase in simeprevir exposure may be due, in part, to a mild pharmacokinetic interaction between simeprevir and tacrolimus [24]. The lack of a clinically relevant change in sofosbuvir exposure is consistent with previous findings in post-transplant recipients and healthy volunteers [14,31].

Simeprevir and sofosbuvir treatment, with or without ribavirin, was generally well tolerated, consistent with previous reports in this population [15-17,26,27]. Safety outcomes were comparable across arms, and not unexpectedly, anemia was only observed in subjects treated with ribavirin [15,26,27]. There were few serious AEs and only two subjects had an AE that was grade  $\geq 2$  and considered possibly related to simeprevir. One transplant rejection occurred at follow-up Week 12; consistent with this, the subject's tacrolimus level had markedly decreased from baseline to the time of rejection. A gradual downward trend in tacrolimus levels was observed in subjects using tacrolimus, similar to what has been noted in another study of simeprevir and sofosbuvir in this patient population [15]. Decreased tacrolimus levels may be explained by the reduced tacrolimus exposure with simeprevir coadministration that was previously observed in healthy volunteers.[37] It is also possible that subjects' liver function improved during effective HCV therapy, leading to HCV RNA clearance and subsequently increased tacrolimus metabolism [38]. Caution should be used when interpreting these tacrolimus pharmacokinetic results given the small numbers of subjects with available data at each time point and the overlapping CIs.

PRO endpoints were evaluated to describe the severity of symptoms associated with HCV or its treatment and health-related quality of life before and after treatment during the current GALAXY study. At baseline, subjects reported overall symptom severity and health-related quality of life measures that were similar to what's been reported in the non-transplant setting for HCV genotype 1–infected subjects without cirrhosis or with compensated cirrhosis [39]. In that study of non-transplant subjects, symptom scores improved with simeprevir and sofosbuvir treatment by the follow-up Week 12 visit, sometimes by amounts considered clinically important. In the post-transplant GALAXY population, HCV-SIQv4 overall body system scores did not change relative to baseline,

and the median change in EQ-5D VAS scores indicated an improvement that was slightly less than the value that has been shown to be clinically important in all cases except in Arm 3 subjects at the follow-up Week 12 time point, at which point a small but clinically significant improvement was observed.

A limitation of the current study is the small sample size, which necessitated descriptive statistics and limited comparisons between treatment groups. For example, there was one subject who had missing data in the randomized population; this subject represented 9.1% of the Arm 1 population and significantly impacted the SVR12 rate in this treatment group (as noted above). Another limitation is that the majority of subjects had less advanced disease (METAVIR score F0-F2), which has been associated with higher SVR12 rates in previous studies in HCV genotype 1–infected liver transplant recipients [13,15,16]. However, it is also possible that disease severity was underestimated in some cases, as assessment of liver fibrosis could have occurred up to 12 months prior to screening.

In summary, the GALAXY study demonstrated the efficacy and safety of simeprevir and sofosbuvir treatment, with or without ribavirin, for 12 or 24 weeks in post-orthotopic liver transplant recipients with recurrent HCV genotype 1. These regimens may be clinically important options for individuals with NS5A variants and, importantly, 100% of subjects treated with simeprevir and sofosbuvir for 12 weeks achieved SVR12, suggesting that this regimen may be adequate for individuals without cirrhosis. Further study is warranted to determine whether this therapy is also efficacious in patients with cirrhosis.

### **Acknowledgments**

This study was funded by Janssen Scientific Affairs, LLC. The authors would like to thank the patients and their families, study investigators, and the study team. The authors would also like to acknowledge Greg Everson (University of Colorado-Denver), Joy Peter and Dave Nelson (University of Florida-Gainesville), and Adrienne Padilla (Janssen Scientific Affairs, LLC) for their contributions to the original design of the

study. Medical writing support was provided by Courtney St. Amour, PhD, of MedErgy, and was funded by Janssen Scientific Affairs, LLC.

## References

1. Crespo G, Marino Z, Navasa M, Forns X. Viral hepatitis in liver transplantation. *Gastroenterology* 2012; 142: 1373-1383.
2. Herzer K, Gerken G. Hepatitis C virus reinfection after liver transplant: new chances and new challenges in the era of direct-acting antiviral agents. *World J Hepatol* 2015; 7: 532-538.
3. Kakati B, Seetharam A. Hepatitis C recurrence after orthotopic liver transplantation: mechanisms and management. *J Clin Transl Hepatol* 2014; 2: 189-196.
4. Wang CS, Ko HH, Yoshida EM, Marra CA, Richardson K. Interferon-based combination anti-viral therapy for hepatitis C virus after liver transplantation: a review and quantitative analysis. *Am J Transplant* 2006; 6: 1586-1599.
5. Kuo A, Terrault NA. Management of hepatitis C in liver transplant recipients. *Am J Transplant* 2006; 6: 449-458.
6. Berenguer M, Schuppan D. Progression of liver fibrosis in post-transplant hepatitis C: mechanisms, assessment and treatment. *J Hepatol* 2013; 58: 1028-1041.
7. Pungpapong S, Aqel BA, Koning L, et al. Multicenter experience using telaprevir or boceprevir with peginterferon and ribavirin to treat hepatitis C genotype 1 after liver transplantation. *Liver Transpl* 2013; 19: 690-700.
8. Coilly A, Roche B, Dumortier J, et al. Safety and efficacy of protease inhibitors to treat hepatitis C after liver transplantation: a multicenter experience. *J Hepatol* 2014; 60: 78-86.
9. Kwo PY, Ghabril M, Lacerda MA, Joseph TA, Fridell JA, Vianna R. Telaprevir with peginterferon/ribavirin for retreatment of null responders with advanced fibrosis post-orthotopic liver transplant. *Clin Transplant* 2014; 28: 722-727.



10. Burton JR Jr, O'Leary JG, Verna EC, et al. A US multicenter study of hepatitis C treatment of liver transplant recipients with protease-inhibitor triple therapy. *J Hepatol* 2014; 61: 508-514.
11. Faisal N, Yoshida EM, Bilodeau M, et al. Protease inhibitor-based triple therapy is highly effective for hepatitis C recurrence after liver transplant: a multicenter experience. *Ann Hepatol* 2014; 13: 525-532.
12. Kaneko J, Sugawara Y, Yamaguchi T, et al. Telaprevir-based triple therapy for hepatitis C null responders among living donor liver transplant recipients. *Biosci Trends* 2014; 8: 339-345.
13. Kwo PY, Mantry PS, Coakley E, et al. An interferon-free antiviral regimen for HCV after liver transplantation. *N Engl J Med* 2014; 371: 2375-2382.
14. Charlton M, Gane E, Manns MP, et al. Sofosbuvir and ribavirin for treatment of compensated recurrent hepatitis C virus infection after liver transplantation. *Gastroenterology* 2015; 148: 108-117.
15. Pungpapong S, Aql B, Leise M, et al. Multicenter experience using simeprevir and sofosbuvir with or without ribavirin to treat hepatitis C genotype 1 after liver transplant. *Hepatology* 2015; 61: 1880-1886.
16. Gutierrez JA, Carrion AF, Avalos D, et al. Sofosbuvir and simeprevir for treatment of hepatitis C virus infection in liver transplant recipients. *Liver Transpl* 2015; 21: 823-830.
17. Khemichian S, Lee B, Kahn J, et al. Sofosbuvir and simeprevir therapy for recurrent hepatitis C infection after liver transplantation. *Transplantation Direct* 2015; 1: 1-5.
18. Charlton M, Everson GT, Flamm SL, et al. Ledipasvir and sofosbuvir plus ribavirin for treatment of HCV infection in patients with advanced liver disease. *Gastroenterology* 2015; 149: 649-659.

19. Poordad F, Schiff ER, Vierling JM, et al. Daclatasvir with sofosbuvir and ribavirin for HCV infection with advanced cirrhosis or post-liver transplant recurrence. *Hepatology* 2016; 63: 1493-1505.
20. REBETOL<sup>®</sup> (ribavirin) [package insert]. Whitehouse Station, NJ: Merck & Co., Inc.; January 2016.
21. Curry MP, Forns X, Chung RT, et al. Sofosbuvir and ribavirin prevent recurrence of HCV infection after liver transplantation: an open-label study. *Gastroenterology* 2015; 148: 100-107.
22. Banerjee D, Reddy KR. Review article: safety and tolerability of direct-acting antiviral agents in the new era of hepatitis C therapy. *Aliment Pharmacol Ther* 2016; 43: 674-696.
23. Shafran SD. The hepatitis C genotype 1 paradox: cost per treatment is increasing, but cost per cure is decreasing. *Can J Gastroenterol Hepatol* 2015; 29: 46-48.
24. OLYSIO<sup>®</sup> (simeprevir) [package insert]. Titusville, NJ: Janssen Therapeutics, Division of Janssen Products, LP; October 2015.
25. OLYSIO<sup>®</sup> (simeprevir) [EU SmPC]. Beerse, Belgium: Janssen-Cilag International NV.
26. Saab S, Greenberg A, Li E, et al. Sofosbuvir and simeprevir is effective for recurrent hepatitis C in liver transplant recipients. *Liver Int* 2015; 35: 2442-2447.
27. Crittenden NE, Buchanan LA, Pinkston CM, et al. Simeprevir and sofosbuvir with or without ribavirin to treat recurrent genotype 1 hepatitis C virus infection after orthotopic liver transplantation. *Liver Transpl* 2016; 22: 635-643.
28. Brown RS Jr, O'Leary JG, Reddy KR, et al. Interferon-free therapy for genotype 1 hepatitis C in liver transplant recipients: real world experience from HCV-TARGET. *Liver Transpl* 2016; 22: 24-33.

29. Holmberg SD, Lu M, Rupp LB, et al. Noninvasive serum fibrosis markers for screening and staging chronic hepatitis C virus patients in a large US cohort. *Clin Infect Dis* 2013; 57: 240-246.
30. HARVONI<sup>®</sup> (ledipasvir and sofosbuvir) [package insert]. Foster City, CA: Gilead Sciences, Inc.; February 2016.
31. SOVALDI<sup>®</sup> (sofosbuvir) [package insert]. Foster City, CA: Gilead Sciences, Inc.; August 2015.
32. EuroQol Group. EuroQol—a new facility for the measurement of health-related quality of life. *Health Policy* 1990; 16: 199-208.
33. Lawitz E, Sulkowski MS, Ghalib R, et al. Simeprevir plus sofosbuvir, with or without ribavirin, to treat chronic infection with hepatitis C virus genotype 1 in non-responders to pegylated interferon and ribavirin and treatment-naive patients: the COSMOS randomised study. *Lancet* 2014; 384: 1756-1765.
34. Gao M. Antiviral activity and resistance of HCV NS5A replication complex inhibitors. *Curr Opin Virol* 2013; 3: 514-520.
35. Poveda E, Wyles DL, Mena A, Pedreira JD, Castro-Iglesias A, Cachay E. Update on hepatitis C virus resistance to direct-acting antiviral agents. *Antiviral Res* 2014; 108: 181-191.
36. Hézode C, Chevaliez S, Scoazec G, et al. Retreatment with sofosbuvir and simeprevir of patients with HCV GT1 or 4 who previously failed a daclatasvir-containing regimen. *Hepatology* 2016; 63:1809-1816.
37. Ouwerkerk-Mahadevan S, Snoeys J, Peeters M, Beumont-Mauviel M, Simion A. Drug-drug interactions with the NS3/4A protease inhibitor simeprevir. *Clin Pharmacokinet* 2016; 55: 197-208.

38. Kugelmas M, Osgood MJ, Trotter JF, et al. Hepatitis C virus therapy, hepatocyte drug metabolism, and risk for acute cellular rejection. *Liver Transpl* 2003; 9: 1159-1165.
39. Kwo P, Gitlin N, Nahass R, et al. Simeprevir plus sofosbuvir (12 and 8 weeks) in HCV genotype 1-infected patients without cirrhosis: OPTIMIST-1, a phase 3, randomized study. *Hepatology* 2016. doi:10.1002/hep.28467. Epub ahead of print.

Author Manuscript

## Figure Legends

### Figure 1. Subject disposition.

Subject disposition during the treatment and follow-up periods of the GALAXY study. SMV, simeprevir; SOF, sofosbuvir; RBV, ribavirin.

<sup>a</sup>Suicide, considered unrelated to study drug by the investigator.

<sup>b</sup>Subject had metastatic prostate cancer.

### Figure 2. Virologic response over time. **A.** On-treatment virologic response. **B.** SVR12.

Virologic response was assessed in randomized subjects at on-treatment Weeks 2, 4, 8, and 12, and EOT. SVR was defined as HCV RNA <15 IU/mL (detectable or undetectable).

HCV, hepatitis C virus; LLQ, lower limit of quantitation; EOT, end of treatment; SVR12, sustained virologic response 12 weeks after the end of treatment; CI, confidence interval; SMV, simeprevir; SOF, sofosbuvir; RBV, ribavirin.

<sup>a</sup>Arm 1, n = 11; Arm 2, n = 11; Arm 3, n = 11.

<sup>b</sup>Arm 1, n = 9; Arm 2, n = 10; Arm 3, n = 11.

<sup>c</sup>For the two subjects who did not achieve SVR12, one committed suicide and one had viral relapse.

### Figure 3. Correlation between sofosbuvir exposure and creatinine clearance.

On the left, central clearance of sofosbuvir is plotted against creatinine clearance at baseline. On the right, sofosbuvir exposure is plotted against creatinine clearance. AUC, area under the concentration-time curve.

### Figure 4. Tacrolimus plasma levels over time.<sup>a</sup>

Median (range) tacrolimus plasma levels are plotted over time for subjects who used tacrolimus and had available data.

<sup>a</sup>Median (range) levels were as follows: baseline, 6.50 (2.0-18.6) IU/mL; Week 12, 4.90 (2.0-12.2) IU/mL; Week 24, 5.60 (3.5-9.8) IU/mL; follow-up Week 12, 3.70 (1.0-8.7) IU/mL.

Author Manuscript

**Table 1.** Baseline Demographic and Disease Characteristics

		<b>Arm 1:</b>	<b>Arm 2:</b>	<b>Arm 3:</b>	<b>Arm 3</b>
		<b>SMV + SOF</b>	<b>SMV + SOF,</b>	<b>SMV + SOF,</b>	<b>nonrand:</b>
		<b>+ RBV,</b>	<b>12 wk</b>	<b>24 wk</b>	<b>SMV + SOF,</b>
	<b>Total</b>	<b>12 wk</b>	<b>12 wk</b>	<b>24 wk</b>	<b>24 wk</b>
	<b>(N = 46)</b>	<b>(n = 11)</b>	<b>(n = 11)</b>	<b>(n = 11)</b>	<b>(n = 13)</b>
Gender, n (%)					
Male	34 (73.9)	8 (72.7)	8 (72.7)	7 (63.6)	11 (84.6)
Female	12 (26.1)	3 (27.3)	3 (27.3)	4 (36.4)	2 (15.4)
Race, n (%)					
White	37 (80.4)	9 (81.8)	9 (81.8)	7 (63.6)	12 (92.3)
Black/African American	8 (17.4)	1 (9.1)	2 (18.2)	4 (36.4)	1 (7.7)
Asian	1 (2.2)	1 (9.1)	0	0	0
Ethnicity, n (%) <sup>a</sup>					
Hispanic/Latino	3 (6.5)	0	1 (9.1)	2 (18.2)	0
Not Hispanic/Latino	43 (93.5)	11 (100)	10 (90.9)	9 (81.8)	13 (100)
Age, median (range), y					
	60.0 (49-68)	60.0 (53-65)	59.0 (50-68)	61.0 (49-64)	59.0 (51-66)
BMI, median (range), kg/m <sup>2</sup>					
	28.8 (20.5-43.4)	28.8 (22.5-34.5)	28.1 (24.8-40.4)	28.8 (20.5-43.4)	28.9 (23.4-39.1)

	<b>Arm 1:</b>	<b>Arm 2:</b>	<b>Arm 3:</b>	<b>Arm 3</b>
	<b>SMV + SOF</b>	<b>SMV + SOF,</b>	<b>SMV + SOF,</b>	<b>nonrand:</b>
	<b>+ RBV,</b>	<b>SMV + SOF,</b>	<b>SMV + SOF,</b>	<b>SMV + SOF,</b>
	<b>12 wk</b>	<b>12 wk</b>	<b>24 wk</b>	<b>24 wk</b>
<b>Total</b>	<b>(n = 11)</b>	<b>(n = 11)</b>	<b>(n = 11)</b>	<b>(n = 13)</b>
<b>(N = 46)</b>				
Use of gastric acid-reducing agent, n (%) <sup>b</sup>	5 (45.5)	8 (72.7)	7 (63.6)	8 (61.5)
Presence of cirrhosis, n (%)	–	–	–	2 (15.4)
METAVIR stage, n (%) <sup>a</sup>				
F0/F1	2 (18.2)	1 (9.1)	1 (9.1)	5 (38.5)
F2	8 (72.7)	6 (54.5)	6 (54.5)	3 (23.1)
F3	1 (9.1)	3 (27.3)	4 (36.4)	1 (7.7)
F4	0	0	0	1 (7.7)
Missing	0	1 (9.1)	0	3 (23.1)
Time since liver transplant, median (range), y	6.0 (1.1-10.3)	5.5 (1.9-14.3)	4.8 (2.3-7.5)	3.5 (0.8-10.6)
Use of immunosuppressant, n (%) <sup>c</sup>				
Tacrolimus	10 (90.9)	10 (90.9)	9 (81.8)	12 (92.3)



	<b>Arm 1:</b>	<b>Arm 2:</b>	<b>Arm 3:</b>	<b>Arm 3</b>
	<b>SMV + SOF</b>	<b>SMV + SOF,</b>	<b>SMV + SOF,</b>	<b>nonrand:</b>
	<b>+ RBV,</b>	<b>SMV + SOF,</b>	<b>SMV + SOF,</b>	<b>SMV + SOF,</b>
	<b>12 wk</b>	<b>12 wk</b>	<b>24 wk</b>	<b>24 wk</b>
<b>Total</b>	<b>(n = 11)</b>	<b>(n = 11)</b>	<b>(n = 11)</b>	<b>(n = 13)</b>
<b>(N = 46)</b>				
Mycophenolate mofetil	4 (36.4)	4 (36.4)	6 (54.5)	5 (38.5)
Sirolimus	1 (9.1)	2 (18.2)	1 (9.1)	1 (7.7)
HCV geno/subtype and NS3 Q80K polymorphism, n (%) <sup>d</sup>				
1a	8 (72.7)	7 (63.6)	8 (72.7)	10 (76.9)
Q80K	3 (37.5)	4 (57.1)	2 (25.0)	3 (30.0)
No Q80K	5 (62.5)	3 (42.9)	6 (75.0)	6 (60.0)
1b	3 (27.3)	4 (36.4)	3 (27.3)	3 (23.1)
HCV NS5A polymorphism at position of interest, n (%) <sup>a,e</sup>				
No	2 (18.2)	5 (45.5)	4 (36.4)	3 (23.1)
Yes	8 (72.7)	5 (45.5)	7 (63.6)	8 (61.5)
Not available	1 (9.1)	1 (9.1)	0	2 (15.4)

		Arm 1: SMV + SOF + RBV, 12 wk (n = 11)	Arm 2: SMV + SOF, 12 wk (n = 11)	Arm 3: SMV + SOF, 24 wk (n = 11)	Arm 3 nonrand: SMV + SOF, 24 wk (n = 13)
HCV NS5B polymorphism at position of interest, n (%) <sup>a,f</sup>					
No	36 (78.3)	10 (90.9)	8 (72.7)	11 (100)	7 (53.8)
Yes	5 (10.9)	0	3 (27.3)	0	2 (15.4)
Not available	5 (10.9)	1 (9.1)	0	0	4 (30.8)
HCV RNA viral load, median (range), log <sub>10</sub> IU/mL	6.6 (4.1-7.6)	6.6 (5.6-7.0)	6.6 (6.3-7.1)	6.7 (6.0-7.6)	5.8 (4.1-7.5)

SMV, simeprevir; SOF, sofosbuvir; RBV, ribavirin; nonrand, nonrandomized subgroup; BMI, body mass index; HCV, hepatitis C virus.

<sup>a</sup>Percentages may not total 100% due to rounding.

<sup>b</sup>Use of prescription or over-the-counter medications at any time.

<sup>c</sup>Immunosuppressant use at screening.

<sup>d</sup>HCV NS3 Q80K polymorphism data not available for 1 subject in the nonrandomized subgroup of Arm 3.

<sup>e</sup>HCV NS5A amino acid positions of interest included 23, 24, 28, 30, 31, 32, 38, 54, 56, 58, 62, 64, 92, and 93.

<sup>f</sup>HCV NS5B amino acid positions of interest included 96, 142, 159, 282, 316, 320, 321, 390, and 415.

**Table 2.** Summary of Pharmacokinetic Parameters

	<b>Arm 1:</b>	<b>Arm 2:</b>	<b>Arm 3:</b>	
	<b>SMV + SOF + RBV, 12 wk</b>	<b>SMV + SOF, 12 wk</b>	<b>SMV + SOF, 24 wk</b>	
<b>Total</b>	<b>(n = 11)</b>	<b>(n = 11)</b>	<b>(n = 24)</b>	
<b>(N = 46)</b>				
<b>SMV<sup>a</sup></b>				
$C_{\text{trough}}$ , median (range), ng/mL	1,055 (110-16,400)	1,010 (157-4,110)	1,190 (110-12,300)	1,045 (163-16,400)
$C_{\text{max}}$ , median (range), ng/mL	2,945 (630-21,000)	3,050 (630-7,970)	3,040 (975-17,100)	2,690 (826-21,000)
$C_{\text{ss,av}}$ , median (range), ng/mL	1,846 (353-18,972)	1,883 (353-5,792)	1,854 (416-14,542)	1,702 (433-18,792)
$AUC_{24\text{h}}$ , median (range), ng·h/mL	44,300 (8,460-451,000)	45,200 (8,460-139,000)	44,500 (9,980-349,000)	40,850 (10,400-451,000)
<b>Sofosbuvir<sup>b</sup></b>				
$C_{\text{trough}}$ , median (range), ng/mL	518 (91-1,317)	534 (249-1,193)	442 (91-1,061)	572 (320-1,317)
$C_{\text{max}}$ , median (range), ng/mL	1,249 (354-2,665)	1,294 (450-2,411)	1,124 (354-2,215)	1,342 (589-2,665)
$C_{\text{ss,av}}$ , median (range), ng/mL	745 (295-1,777)	787 (341-1,612)	672 (295-1,458)	829 (449-1,777)
$AUC_{24\text{h}}$ , median (range), ng·h/mL	17,884 (7,087-42,647)	18,899 (8,191-38,682)	16,129 (7,087-34,995)	19,884 (10,777-42,647)

SMV, simeprevir; SOF, sofosbuvir; RBV, ribavirin;  $C_{\text{trough}}$ , trough plasma concentration;  $C_{\text{max}}$ , maximum plasma concentration;  $C_{\text{ss,av}}$ , average steady-state plasma

concentration;  $AUC_{24h}$ , area under the plasma concentration-time curve from time of administration to 24 hours post-dose.

<sup>a</sup>In total, 152 plasma samples from 46 subjects were available for analysis (of the 159 samples in the dataset, two were below the lower limit of quantitation and five were excluded because the intake time of the dose taken prior to the sample was missing).

<sup>b</sup>In total, 153 plasma samples from 46 subjects were available for analysis (of the 159 samples in the dataset, one was below the lower limit of quantitation and five were excluded because the intake time of the dose taken prior to the sample was missing).

Author Manuscript

**Table 3.** Summary of Safety During the Treatment Phase

	<b>Total</b>	<b>Arm 1: SMV + SOF + RBV, 12 wk</b>	<b>Arm 2: SMV + SOF, 12 wk</b>	<b>Arm 3: SMV + SOF, 24 wk</b>	<b>Arm 3 nonrand: SMV + SOF, 24 wk</b>
	<b>(N = 46)</b>	<b>(n = 11)</b>	<b>(n = 11)</b>	<b>(n = 11)</b>	<b>(n = 13)</b>
Any AE, n (%)	45 (97.8)	11 (100)	11 (100)	11 (100)	12 (92.3)
Any serious AE, n (%) <sup>a</sup>	5 (10.9)	2 (18.2)	0	1 (9.1)	2 (15.4)
Any fatal AE, n (%) <sup>b</sup>	1 (2.2)	1 (9.1)	0	0	0
AE at least possibly related to SMV, n (%)	29 (63.0)	7 (63.6)	9 (81.8)	7 (63.6)	6 (46.2)
Grade $\geq 2^c$	2 (4.3)	0	0	0	2 (15.4)
AE leading to permanent discontinuation of $\geq 1$ study drug, n (%) <sup>d</sup>	2 (4.3)	2 (18.2)	0	0	0
Most common AEs, n (%) <sup>e,f</sup>					
Headache	17 (37.0)	5 (45.5)	3 (27.3)	7 (63.6)	2 (15.4)
Fatigue	16 (34.8)	3 (27.3)	3 (27.3)	5 (45.5)	5 (38.5)
Nausea	11 (23.9)	3 (27.3)	3 (27.3)	3 (27.3)	2 (15.4)

Diarrhea	10 (21.7)	2 (18.2)	3 (27.3)	3 (27.3)	2 (15.4)
Pruritus	10 (21.7)	4 (36.4)	4 (36.4)	2 (18.2)	0
Vomiting	8 (17.4)	2 (18.2)	2 (18.2)	2 (18.2)	2 (15.4)
Dyspnea	7 (15.2)	2 (18.2)	2 (18.2)	3 (27.3)	0
Decreased appetite	6 (13.0)	2 (18.2)	2 (18.2)	2 (18.2)	0
Insomnia	6 (13.0)	3 (27.3)	1 (9.1)	1 (9.1)	1 (7.7)
Rash <sup>g</sup>	6 (13.0)	3 (27.3)	1 (9.1)	2 (18.2)	0
Constipation	5 (10.9)	2 (18.2)	2 (18.2)	1 (9.1)	0

---

SMV, simeprevir; SOF, sofosbuvir; RBV, ribavirin; nonrand, nonrandomized subgroup; AE, adverse event.

<sup>a</sup>None of the serious AEs were considered to be possibly related to study drug by the investigator. The serious AEs were as follows: Arm 1, device-related infection and completed suicide; Arm 3, small intestinal obstruction (randomized subgroup), abdominal hernia (nonrandomized subgroup), and prostate cancer (nonrandomized subgroup).

<sup>b</sup>One subject committed suicide, considered unrelated to study drug by the investigator.

<sup>c</sup>AEs were fatigue and increased gamma glutamyltransferase.

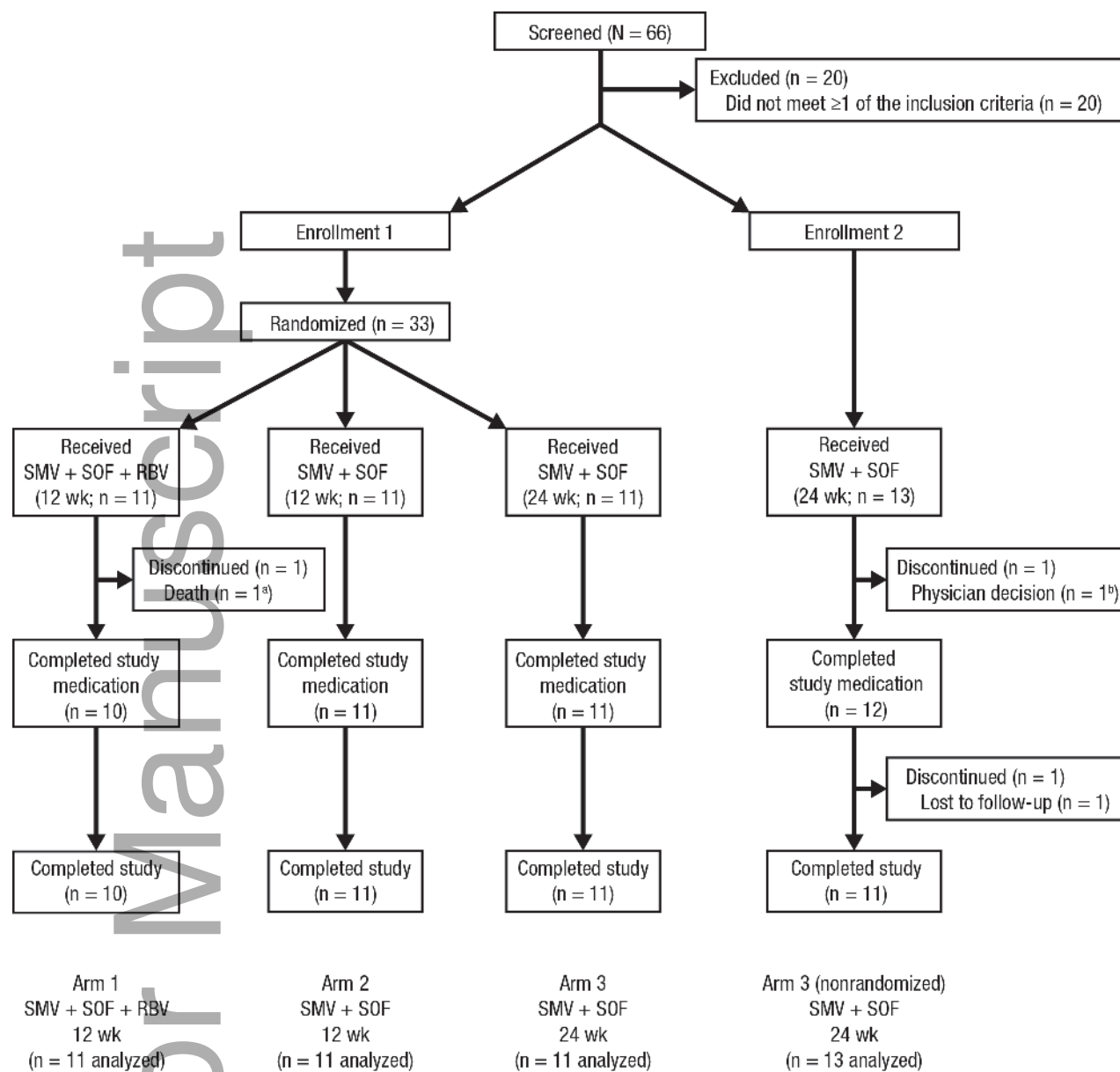
<sup>d</sup>One subject committed suicide and discontinued all three study medications; a second subject discontinued ribavirin due to anemia.

<sup>e</sup>Reported by >10% of subjects in total population by preferred term.

<sup>f</sup>One (2.2%) subject had a photosensitivity reaction AE by preferred term, and a total of four (8.7%) subjects had a photosensitivity condition AE of clinical interest (including the following preferred terms: photosensitivity reaction and sunburn). All events were grade 1 in severity.

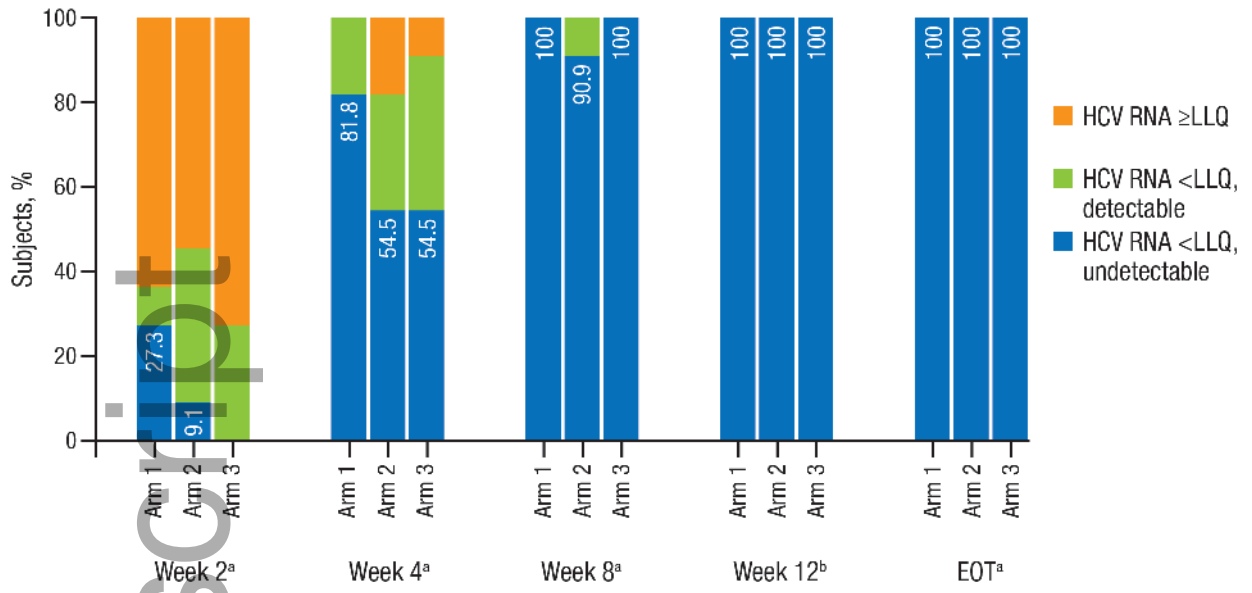
<sup>9</sup>A total of ten (21.7%) subjects had a rash AE of clinical interest (including the following preferred terms: rash, sunburn, cutaneous vasculitis, palmar erythema, photosensitivity reaction, and vesicular rash). All events were grade 1 in severity.

Author Manuscript



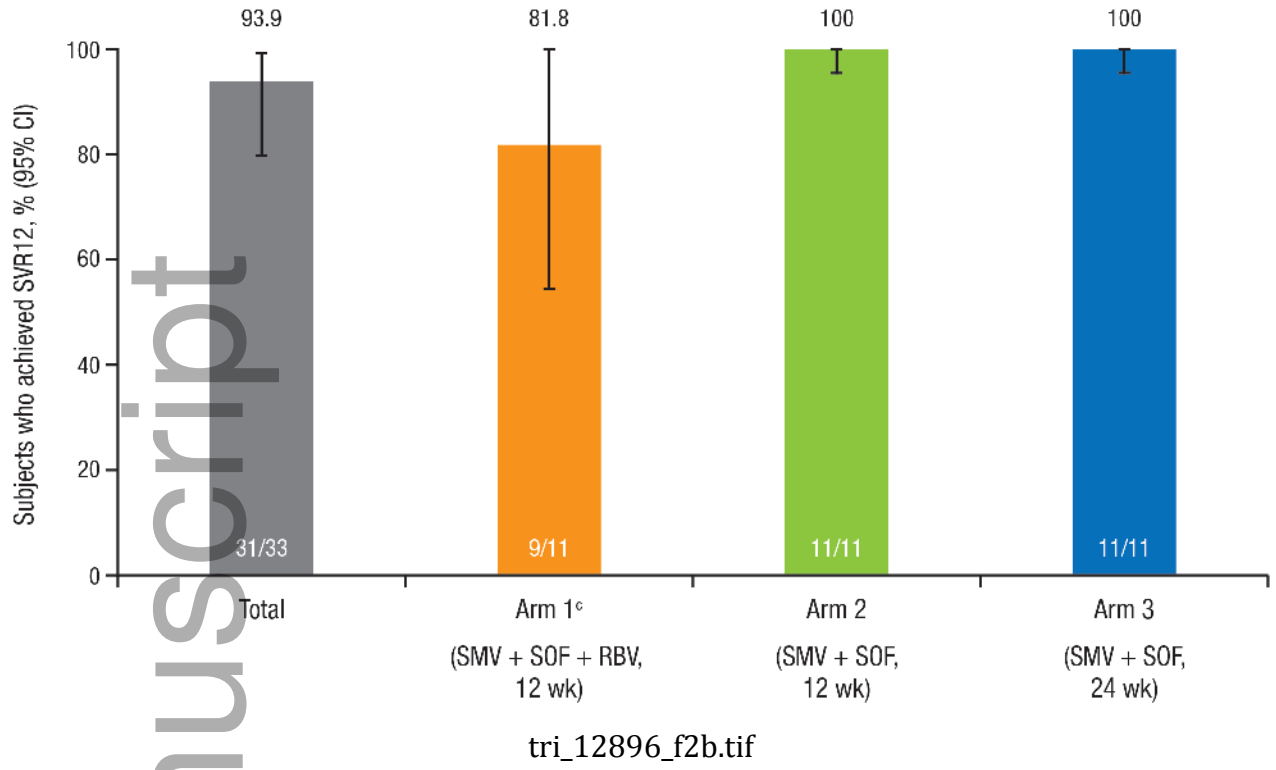
tri\_12896\_f1.tif

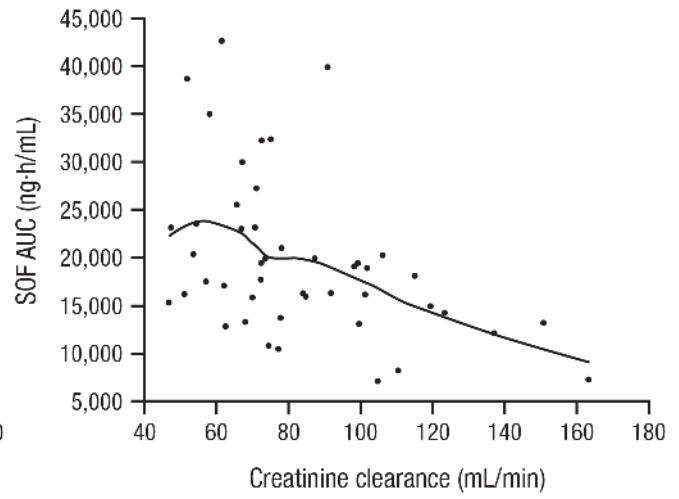
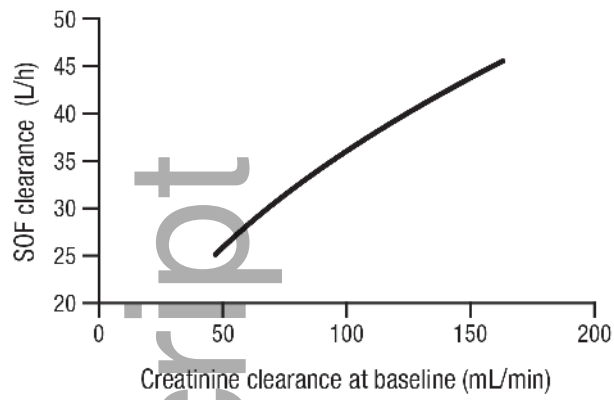




tri\_12896\_f2a.tif

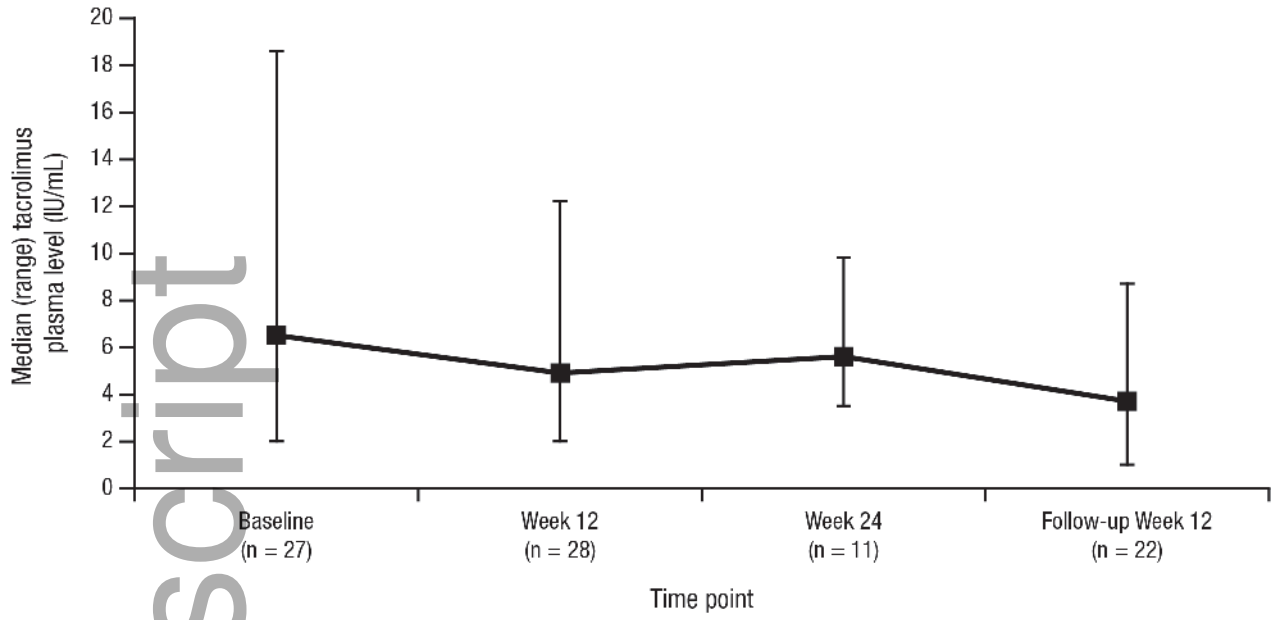
Author Manuscript





tri\_12896\_f3.tif

Author Manuscript



tri\_12896\_f4.tif

Author Manuscript