

Randomized assessment of imatinib in patients with acute ischaemic stroke treated with intravenous thrombolysis

■ N. Wahlgren^{1,2}, M. Thorén^{1,2}, B. Höjeberg³, T.-B. Käll⁴, A.-C. Laska⁵, C. Sjöstrand^{1,2}, J. Höjjer⁶, H. Almqvist^{2,7}, S. Holmin^{2,7}, A. Lilja^{2,7}, L. Fredriksson⁸, D. Lawrence⁹, U. Eriksson⁸ & N. Ahmed^{1,2}

From the ¹Department of Neurology, Karolinska University Hospital; ²Department of Clinical Neuroscience, Karolinska Institutet; ³Department of Neurology, Capio St Görän Hospital; ⁴Department of Internal Medicine, Södersjukhuset; ⁵Department of Internal Medicine, Danderyd Hospital; ⁶Unit of Biostatistics, Institute of Environmental Medicine, Karolinska Institutet; ⁷Department of Neuroradiology, Karolinska University Hospital; ⁸Department of Medical Biochemistry and Biophysics, Karolinska Institutet, Stockholm, Sweden; and ⁹Department of Internal Medicine, Division of Cardiovascular Medicine, University of Michigan Medical School, Ann Arbor, MI, USA

Abstract. Wahlgren N, Thorén M, Höjeberg B, Käll T-B, Laska A-C, Sjöstrand C, Höjjer J, Almqvist H, Holmin S, Lilja A, Fredriksson L, Lawrence D, Eriksson U, Ahmed N (Karolinska University Hospital, Stockholm; Karolinska Institutet, Stockholm; Capio St Görän Hospital, Stockholm; Södersjukhuset, Stockholm; Danderyd Hospital, Stockholm; Karolinska Institutet, Stockholm; Karolinska University Hospital, Stockholm; Karolinska Institutet, Stockholm; Sweden, and University of Michigan Medical School, Ann Arbor, MI, USA). Randomized assessment of imatinib in patients with acute ischaemic stroke treated with intravenous thrombolysis. *J Intern Med* 2017; **281**: 273–283.

Background. Imatinib, a tyrosine kinase inhibitor, has been shown to restore blood–brain barrier integrity and reduce infarct size, haemorrhagic transformation and cerebral oedema in stroke models treated with tissue plasminogen activator. We evaluated the safety of imatinib, based on clinical and neuroradiological data, and its potential influence on neurological and functional outcomes.

Methods. A phase II randomized trial was performed in patients with acute ischaemic stroke treated with intravenous thrombolysis. A total of 60 patients were randomly assigned to four groups [3 (active): 1 (control)]; the active treatment groups received oral imatinib for 6 days at three dose levels (400, 600 and 800 mg). Primary outcome

was any adverse event; secondary outcomes were haemorrhagic transformation, cerebral oedema, neurological severity on the National Institutes of Health Stroke Scale (NIHSS) at 7 days and at 3 months and functional outcomes on the modified Rankin scale (mRS).

Results. Four serious adverse events were reported, which resulted in three deaths (one in the control group and two in the 400-mg dose group; one patient in the latter group did not receive active treatment and the other received two doses). Non-serious adverse events were mostly mild, resulting in full recovery. Imatinib ameliorated neurological outcomes with an improvement of 0.6 NIHSS points per 100 mg imatinib ($P = 0.02$). For the 800-mg group, the mean unadjusted and adjusted NIHSS improvements were 4 ($P = 0.037$) and 5 points ($P = 0.012$), respectively, versus controls. Functional independence (mRS 0–2) increased by 18% versus controls (61 vs. 79; $P = 0.296$).

Conclusion. This phase II study showed that imatinib is safe and tolerable and may reduce neurological disability in patients treated with intravenous thrombolysis after ischaemic stroke. A confirmatory randomized trial is currently underway.

Keywords: cerebral infarct, cerebral oedema, imatinib, intracerebral haemorrhage, stroke, thrombolysis.

Introduction

Disruption of the blood–brain barrier (BBB) is a critical pathophysiological event following cerebral ischaemia [1–5], which may play a significant role in haemorrhagic transformation and cerebral oedema after treatment with tissue plasminogen

activator (tPA) [6, 7]. Moreover, a leaky BBB may expose ischaemic tissue to infiltrating leucocytes [8]. Severe vascular disruption in ischaemia is associated with severe tissue injury [9]. Imatinib, a tyrosine kinase inhibitor, can restore the integrity of the BBB by blocking the signalling of platelet-derived growth factor alpha (PDGF- α)

receptors on perivascular astrocytes [10]. PDGF- α receptors open the BBB after tPA-mediated activation of the latent form of PDGF subtype CC (PDGF-CC) [7, 11, 12]. Elevated plasma levels of PDGF-CC are associated with haemorrhagic transformation after treatment with tPA in ischaemic stroke patients [13]. In experimental stroke models, treatment with imatinib decreases BBB permeability, lowers the risk of haemorrhagic transformation and cerebral oedema and reduces infarct size [10, 14].

Despite intravenous thrombolysis (IVT) [15–23] and mechanical thrombectomy [24–28], up to 40% of patients are still functionally dependent or dead at follow-up [29]. Only a minority of all ischaemic stroke patients can be treated by reperfusion therapies because of the short time window available for treatment, contraindications and risk of haemorrhagic transformation.

The main aim of this study was to evaluate the safety and tolerability of imatinib amongst ischaemic stroke patients treated with IVT. Secondary aims were to determine the effect of imatinib on haemorrhagic transformation, cerebral oedema and neurological and functional outcomes.

Methods

Study design

I-Stroke was a prospective, randomized, open-label, blinded end-point evaluation (PROBE), dose escalation, regional multicentre clinical trial for patients with acute ischaemic stroke who were treated with IVT. After providing informed consent, a total of 60 patients were randomly assigned [3 (active): 1 (control)]; using the web-based system Viedoc] within 1 h after the termination of reperfusion treatment, with the aim of creating four groups of equal size ($n = 15$ each), in three treatment phases ($n = 20$ in each phase). The effects of imatinib were tested at a daily dose of 400 mg (low dose) in the first phase, at 600 mg (medium dose) in the second phase and at 800 mg (high dose) in the third phase. Each dose-increase phase was preceded by clearance by an independent safety committee based on evaluation of the serious and nonserious adverse events. In case of a serious adverse event during the third phase of the study with high-dose imatinib, the independent safety committee would have been involved but this did not occur. All patients received IVT in agreement with the accepted indications (Appendix 1).

Mechanical thrombectomy was performed in patients with large artery occlusion who satisfied the local criteria for intervention (Appendix 2).

The study protocol was approved by the Ethics Committee of Karolinska Institutet and by the Medical Products Agency of Sweden. The study was registered with the European Clinical Trials Database (EUDRA CT NR 2010-019014-25).

Patients and participating centres

The study was conducted at five centres in Stockholm County. Patients for whom mechanical thrombectomy was considered had IVT initiated at the local hospital and were then transferred to Karolinska University Hospital at Solna. Patients were 18–85 years old, with acute ischaemic stroke onset causing a neurological deficit of 7–25 points on the National Institutes of Health Stroke Scale (NIHSS). A comprehensive list of exclusion criteria is shown in Appendix 3.

Treatment

If allocated to the active treatment group, imatinib was administered orally as soon as possible after randomization (day 0) as tablets corresponding to doses of 400, 600 or 800 mg, depending on the phase of the study. From day 1 to day 5, tablets were given each morning, except at the highest dose level (800 mg) where tablets of 400 mg were given twice daily (morning and evening).

Outcome measures

Primary outcome

The primary outcome of this study was any serious or nonserious adverse event. The classification of adverse events, severity and likelihood of relation to treatment and clinical course was the local investigator's responsibility and was documented in the case record form.

Secondary outcomes

In this study, secondary outcomes were the occurrence and severity of haemorrhagic transformation, cerebral oedema and infarct volume, neurological outcomes as measured by the NIHSS score and functional outcomes as measured by the modified Rankin scale (mRS) score at 3 months. The evaluation of infarct volume will be addressed in a future publication.

Clinical and radiological assessments

The NIHSS score was determined before IVT, at the start of study treatment (baseline), after 2 h (day 0), on day 1 and then daily until day 7. Adverse events were assessed daily from day 0 to day 7, and at 3 months. Blinded evaluations of the NIHSS and mRS scores were performed at 3 months at a different hospital from the one responsible for the acute treatment.

Computer tomography (CT) scans were performed at baseline, 24 h (accepted interval 22–36 h) and, optionally, at 7 days. Magnetic resonance imaging (MRI) was performed at 24 h (accepted interval as for CT) and at 7 days. CT and MRI examinations were evaluated blindly by two experienced neuro-radiologists to reach a consensus.

Definitions of haemorrhagic transformation, such as haemorrhagic infarcts and intracerebral (parenchymatous) haemorrhages and cerebral oedema, have been described previously [17] (Data S1).

Statistical analyses

Descriptive statistics for baseline, demographic and imaging data were used to compare the different treatment groups. Proportions were calculated for categorical values, dividing the number of events by the total number (excluding missing/unknown values). Median values were calculated for continuous variables and were compared using a median regression. For the calculation of differences between proportions, we used Fisher's exact test. Potential associations between adverse events and treatment groups were analysed using Fisher's exact test. The comparisons for creatinine, ALAT, ASAT and total white blood cell count were made using a two-sample *t*-test.

To analyse whether imatinib had any effect on the NIHSS score, the dose of imatinib was treated both as a categorical and a continuous variable. When looking at separate time-points, a linear regression with robust standard errors was used whilst adjusting for thrombectomy status. When considering the mean effect over the entire time course, a linear mixed model was used with a random intercept and adjustment for thrombectomy status using robust standard errors and allowing the residuals to have an autoregressive 1 (AR1) correlation within individuals. The choice to use AR1

correlation was made by comparing the Akaike information criterion to a model without AR1 correlation. To model the median effect over the entire time course, we used a median regression with cluster robust standard errors [30]. Because of some missing NIHSS values, multiple imputations [31] were used.

When comparing the mean percentage NIHSS change from baseline, we used a linear regression adjusted for thrombectomy status with bootstrap confidence intervals. The shift analysis of the mRS after 90 days was conducted using three separate Mann–Whitney *U*-tests (comparing each imatinib group to the control). The association between treatment groups and functional independence was analysed using logistic regression. Statistical analyses were performed using STATA v.13 software (StataCorp LP, College Station, TX, USA).

Results

Patient characteristics

Sixty patients were recruited between February 2011 and November 2014 (20 patients for each dose level). In phase I, 15 patients were randomized to low dose and five to control, in phase II, 14 patients to medium dose and six to control and in phase III, 14 patients to high dose and six to control. Baseline characteristics are shown in Table 1. All patients were included in the safety analysis (intention to treat). The remaining analyses were performed, according to actual treatment (per protocol) (Fig. 1).

Treatment

The median time from stroke onset to IVT for all participants ($n = 60$) was 86 min (range 35–269 min). For patients treated with mechanical thrombectomy, the median time from onset to the end of the intervention was 290 min (range 145–465 min; exact time missing for three participants). For patients allocated to imatinib ($n = 41$), the median time from stroke onset to the first dose of imatinib was 240 min (range 75–714 min).

Safety analysis: mortality

Three patients died during the study period. One patient, allocated to the low-dose group but not receiving active treatment, died because of a recurrent stroke. One control patient died because of an infection. The third patient, who received one

Table 1 Demographic and baseline data (intention-to-treat population)

	Control	Low dose	Medium dose	High dose
Number of patients	17	15	14	14
Median age (years)	70	76	73	72
Male (%)	65	53	79	43
Hypertension (%)	76	73	64	50
Atrial fibrillation (%)	29	33	43	36
Diabetes (%)	18	20	7	7
Hyperlipidaemia (%)	35	20	29	36
Current smoker (%)	18	7	29	0
Previous smoker (%)	35	40	50	29
Previous stroke >3 months (%)	12	7	0	7
Previous TIA (%)	12	13	7	0
Median baseline NIHSS score	13	12	11	13
Intravenous thrombolysis (%)	100	100	100	100
Intra-arterial thrombolysis (%)	0	7	0	0
Mechanical thrombectomy (%)	29	47	21	71
Stenting (%)	6	13	0	7
Aspirin (%)	31	47	36	21
Warfarin (%)	6	0	8	7
Oral antidiabetic agent (%)	7	7	0	7
Insulin (%)	6	0	8	0
Statin (%)	50	20	21	21

TIA, transient ischaemic attack; NIHSS, National Institutes of Health Stroke Scale.

dose of 400 mg imatinib at the day of onset and on day 1, died because of an infarct with intracerebral haemorrhage and oedema. The investigator and the independent safety committee found no likely connection between the study treatment and the patient's clinical deterioration.

Safety analysis: adverse events

Serious adverse events

Four serious adverse events were reported, which resulted in the death of three patients. The patient in the control group who deteriorated because of

fever and infection also had a growing femoral haematoma at the site of the femoral artery puncture. There were no serious adverse events in the medium- and high-dose groups.

Nonserious adverse events

In total, 118 nonserious adverse events were reported in 41 patients (Table 2). Eleven cerebral haemorrhagic events were reported in the medium-dose group (10 were judged 'unlikely' to be related to the imatinib treatment, and one was classified 'possible'). Severity was mild, moderate and severe in eight, two and one patients, respectively. There were six reports of mild or moderate itching and skin reactions in the high-dose group; the relation to imatinib treatment was classified as 'probable', 'possible' or 'expected' in five cases and 'unlikely' in one.

The severity of nonserious adverse events, plasma concentrations of imatinib and laboratory values are shown in the Data (S2, S3 and S4, respectively).

Haemorrhagic transformation and cerebral oedema

A total of 21 haemorrhagic infarctions (six HI1, 15 HI2) were observed in this study: six each in the control, low-dose and medium-dose groups and three in the high-dose group. Three intracerebral haemorrhages were reported (two PH1, one PH2). One PH1-type haemorrhage occurred in the control group and one in the high-dose group; the PH2-type haemorrhage occurred in the medium-dose group.

In addition, four remote intracerebral haemorrhages of a milder grade (PHr1) were reported (one each in the low- and medium-dose groups and two in those receiving the high dose).

No haemorrhagic transformations (0 of 5) occurred when imatinib treatment was initiated within 5 h after stroke onset (Table 3) or when reperfusion treatment (IVT alone or in combination with thrombectomy) was completed within 4.5 h (0 of 6) in the high-dose group.

Results for cerebral oedema are available as Data (S5). Overall, there were 33 cases of cerebral oedema in the study: 28 mild ($n = 7, 4, 7$ and 10 in the control and low-, medium- and high-dose groups, respectively), three moderate ($n = 2$ and 1 in the low- and medium-dose groups, respectively) and two severe oedema (both in the control).

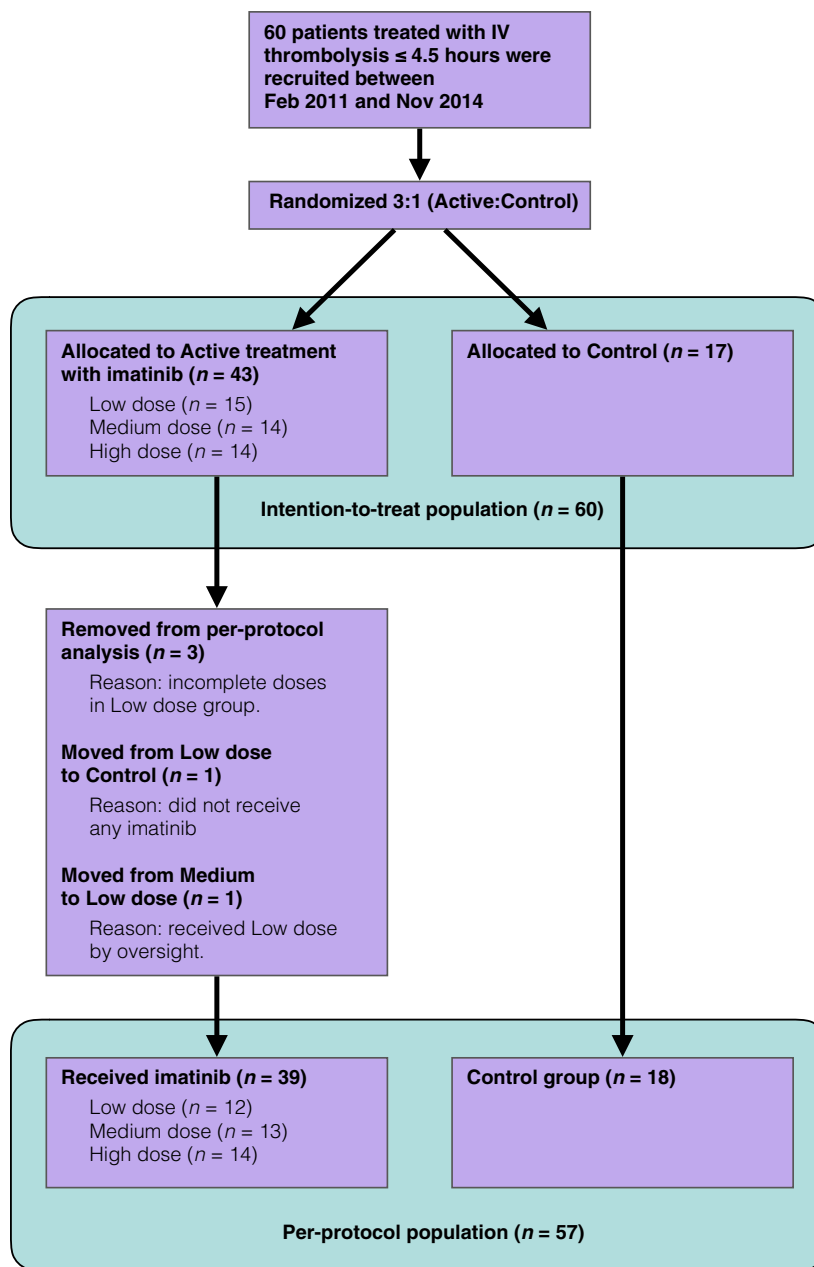


Fig. 1 Overview of study recruitment and populations included in the intention-to-treat (including all randomized patients) and in per-protocol analyses (including patients treated according to protocol).

Neurological outcomes

The mean unadjusted improvement in the NIHSS score (Fig. 2) compared to controls over all time-points after baseline was two points for the low-dose group ($P = 0.283$), three points for the medium-dose group ($P = 0.084$) and four points for the high-dose group ($P = 0.037$). After adjustment

for thrombectomy, the corresponding mean improvement compared to controls was two points ($P = 0.259$), three points ($P = 0.106$) and five points ($P = 0.012$).

For the three protocol-specified time-points, there were significant improvements in the adjusted mean NIHSS scores in patients treated with high

Table 2 Nonserious adverse events

AEs	Control (n = 17)	Low dose (n = 15)	Medium dose (n = 14)	High dose (n = 14)	Total (n = 60)	P-value
Total number of AEs	25	19	44	30	118	
Fever and infection	4 (6)	4 (7)	4 (5)	3 (3)	15 (21)	1
Itching and skin reaction	2 (2)	2 (2)	0 (0)	6 (6)	10 (10)	0.020
Cerebral bleeding	3 (3)	0 (0)	9 (11)	1 (1)	13 (15)	<0.001
Arrhythmia and tachy/bradycardia	3 (3)	1 (1)	3 (4)	2 (2)	9 (10)	0.483
Nausea and vomiting	0 (0)	1 (2)	2 (6)	4 (4)	7 (12)	0.063
Fall	1 (1)	0 (0)	2 (3)	1 (1)	4 (5)	0.528
Dyspnoea	2 (2)	0 (0)	1 (1)	1 (1)	4 (4)	0.780
Systemic bleeding	1 (3)	0 (0)	1 (1)	2 (3)	4 (7)	0.528
Fainting	0 (0)	0 (0)	0 (0)	2 (2)	2 (2)	0.103
Other	3 (5)	5 (7)	9 (13)	5 (7)	22 (32)	0.067

Data show number of patients with an event (total number of events) in the intention-to-treat population. AE, adverse event.

Table 3 Haemorrhagic transformations

Any haemorrhagic transformation	Control n = 18	Low dose n = 12	Medium dose n = 13	High dose n = 14
Stroke onset to imatinib treatment <5 h		4/8	4/9	0/5
Stroke onset to imatinib treatment ≥5 h		3/4	4/4	6/9
Stroke onset to end of reperfusion 0–4.5 h	5/16	5/9	6/11	0/6
Stroke onset to end of reperfusion >4.5 h	2/2	2/3	2/2	6/8

Data show number of patients with haemorrhagic transformations, relative to the total number of patients, in the per-protocol population.

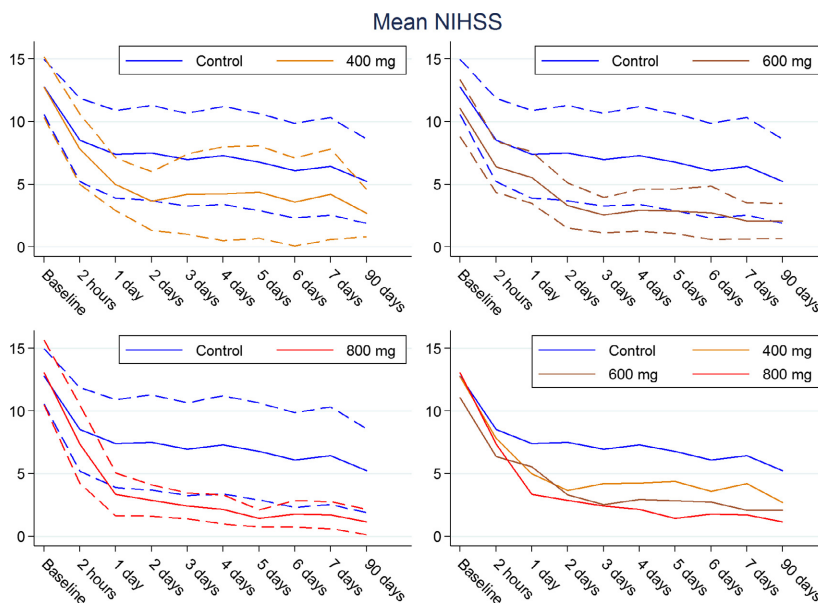


Fig. 2 National Institutes of Health Stroke Scale (NIHSS) score per treatment group and time-point (solid lines, means; dashed lines, 95% CIs; per-protocol population).

doses of imatinib compared to controls: five points (−5.28; 95% CI −9.60 to −0.96; $P = 0.018$) on day 1; 6 points (−5.68; 95% CI −10.38 to −0.98; $P = 0.019$) on day 7; and five points (−4.81; 95% CI −10.39 to −0.98; $P = 0.019$) at 3 months. There were also significant improvements with the high dose for all other individual time-points except 2 h.

When stratified by treatment with mechanical thrombectomy, the improvement in the mean NIHSS score between controls and the high-dose group at day 7 was four points for patients who underwent thrombectomy and five points for those who did not. Compared to baseline, patients treated with thrombectomy in the control group ($n = 6$) showed an improvement in the mean NIHSS of 10 points from baseline to 7 days (16–6). In the high-dose group ($n = 10$), the corresponding improvement was 12 points (14–2). For non-thrombectomy patients, the corresponding improvement was 5 points (11–6) in the control group ($n = 12$) and 10 points (11–1) in the high-dose group ($n = 4$).

Neurological outcomes improved with increasing doses of imatinib throughout the study period. The improvement in the mean unadjusted NIHSS score compared to controls was 0.5 points per 100 mg

imatinib (−0.5; 95% CI −0.98 to −0.02; $P = 0.04$). After adjustment for thrombectomy, the improvement was 0.6 score points per 100 mg imatinib (−0.59; 95% CI −1.08 to −0.09; $P = 0.02$).

Neurological outcome expressed as the median, as improvement of ≥ 8 NIHSS points and as a percentage of the baseline value at different time-points is shown in Data (S6).

Functional outcomes

Functional outcomes on the mRS are shown in Fig. 3. Functional independence (mRS 0–2) was observed in 61% of the control group and 72% of all imatinib-treated patients. For the high-dose group, there was an 18% absolute increase in the proportion of functional independence and a higher odds ratio adjusted for thrombectomy compared to control (2.33; 95% CI 0.48–11.44; $P = 0.296$).

Discussion

Treatment with all doses of imatinib daily for 6 days in acute ischaemic stroke patients who received IVT was safe and well tolerated. Although any efficacy outcome should be interpreted with caution considering that the trial was a phase II study of limited

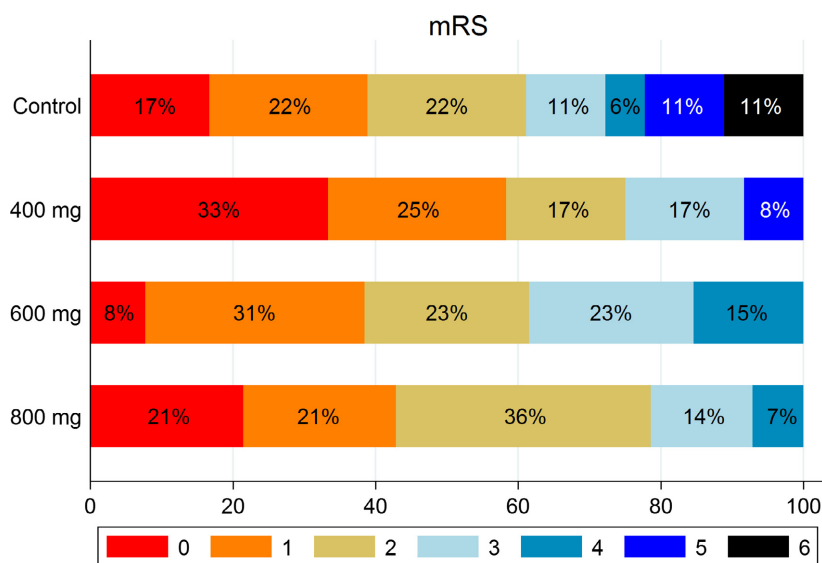


Fig. 3 Distribution of modified Rankin scale (mRS) scores in the per-protocol population. Scores ranged from 0 to 6: 0, no symptoms; 1, no clinically significant disability; 2, slight disability (patients able to look after their own affairs without assistance but unable to perform all previous activities); 3, moderate disability (patients require some help but able to walk without assistance); 4, moderately severe disability (patients unable to attend to bodily needs or walk without assistance); 5, severe disability (patients require constant nursing care and attention); 6, death.

size, the effect of imatinib on neurological outcome increased dose dependently, with a 0.6-point improvement in the NIHSS score per 100 mg imatinib. Only the high-dose imatinib treatment resulted in a statistically significant improvement for the protocol-specified neurological outcomes at day 7 and at 3 months compared to controls. The improvement was consistent for the whole study period and for each individual time-point later than 2 h after the initiation of thrombolysis. The neurological improvement with the high dose versus control was clinically relevant, as it was comparable to the effect of mechanical thrombectomy [24, 27]. This effect was added to the improvement achieved by IVT and, when indicated, mechanical thrombectomy. High-dose imatinib was also associated with 18% improvement of functional independency versus control, although these results should be interpreted with extreme caution because of the small numbers of patients in the study groups.

Imatinib is primarily used in the treatment of haematological cancers with an acceptable rate of adverse events in long-term follow-up [32] but has not previously been used for the treatment of stroke. For its usual indication, the dose is titrated from a lower dose to an individually adapted level up to a recommended maximum of 800 mg daily. In this study, we started immediately with a dose of 400, 600 or 800 mg daily, with evaluation by an independent safety committee between each dose increase. We did not observe any serious adverse events with imatinib treatment. Nonserious events were mild or only moderately severe and tolerable. Itching and skin reactions, and possibly also nausea (results were nonsignificant), may be related to treatment.

Although our findings on neurological outcome in this clinical study are preliminary, they correlate well with observations made in experimental studies [6–14]. There are several conceivable mechanisms for an effect of imatinib, including the restoration of the BBB with a reduction in the subsequent inflammatory response, reduced oedema and preserved nutritional supply to the ischaemic area. The inflammatory response to ischaemic injury includes the activation of microglia, the production of pro-inflammatory mediators and the infiltration of inflammatory cells, events that contribute to ischaemic brain injury [8, 33]. The peak infiltration of inflammatory cells occurs during the first days after acute stroke. Restriction of the invasion of cells from the blood vessels to the

ischaemic brain may provide an explanation for an effect of imatinib on the neurological outcomes.

An expected effect of BBB restoration would be a reduced risk of haemorrhagic transformation after IVT [21–23]. Interestingly, this increased risk of haemorrhagic transformation observed before IVT is greater in patients with higher levels of PDGF-CC on admission and at 24 h after stroke [13]. In our study, there were no marked differences between the treatment groups regarding the total occurrence of haemorrhagic transformation. One explanation may be that imatinib treatment was administered too late to exert an overall influence on the haemorrhage risk; of note, no haemorrhagic transformation occurred in patients treated with 800 mg imatinib within the first 5 h after stroke onset. Currently, imatinib is only available in tablet form for oral administration. An intravenous form of imatinib could potentially enhance very early administration in patients with acute stroke. In patients with suspected difficulty in swallowing, it is possible to administer imatinib by nasogastric tube after dispersion of the tablets in water. A reduction in the haemorrhage risk with early imatinib treatment would be clinically important because the risk of bleeding is a serious concern during the use of IVT and may restrict its use for some patients. Early high-dose imatinib treatment also seemed to reduce the occurrence of cerebral oedema. These observations were consistent with data from experimental studies in which imatinib was administered 1 h after the induction of stroke and thrombolysis with tPA was administered 5 h after stroke induction [10].

Because of its effects in ischaemic stroke, as shown in preclinical studies [10, 14] and preliminary clinical results from our pilot study, the potential benefit of imatinib in haemorrhagic stroke (intracerebral and subarachnoid haemorrhage) warrants further preclinical and clinical studies.

This study had several limitations. First, although evaluations of imaging scans and 3-month outcomes were blinded, this was an open-label study. Secondly, the higher frequency of mechanical thrombectomy in the high-dose group could potentially influence the results. However, the results were adjusted for mechanical thrombectomy and, when stratified by thrombectomy, the result was fairly robust, although the number of patients was small. Thirdly, a limited number of patients were enrolled in the study ($n = 60$).

In conclusion, imatinib treatment is safe and tolerable and may reduce neurological disability in patients with acute ischaemic stroke who received thrombolysis. The findings of this phase II study open a new strategy for acute stroke treatment, complementary to the existing evidence-based treatments, thrombolysis and thrombectomy. Our findings need confirmation in a larger trial comparing high-dose imatinib with placebo. One such trial is in preparation.

Funding sources

This study was funded by the Swedish Agency for Innovation Systems (Vinnova) and private donations through the Swedish Heart and Lung Foundation and Karolinska Institutet. The funders had no role in the design of the study, data collection, analysis and interpretation or writing of the report. The corresponding author had full access to all the data in the study and had final responsibility for the decision to submit for publication.

Conflict of interest statement

Nils Wahlgren and Ulf Eriksson have applied for a patent for the use of imatinib in acute stroke. All other authors have no conflict of interests. Details regarding study coordination, contribution to the manuscript, members of the safety committee, study investigators and the research nurses responsible for patient recruitment are available as Data (S7).

References

- Abbruscato TJ, Davis TP. Combination of hypoxia/aglycemia compromises in vitro blood-brain barrier integrity. *J Pharmacol Exp Ther* 1999; **289**: 668–75.
- Fischer S, Clauss M, Wiesnet M, Renz D, Schaper W, Karliczek GF. Hypoxia induces permeability in brain microvessel endothelial cells via VEGF and NO. *Am J Physiol* 1999; **276**: C812–20.
- Mark KS, Davis TP. Cerebral microvascular changes in permeability and tight junctions induced by hypoxia-reoxygenation. *Am J Physiol Heart Circ Physiol* 2002; **282**: H1485–94.
- Latour LL, Kang DW, Ezzeddine MA, Chalela JA, Warach S. Early blood-brain disruption in human focal brain ischemia. *Ann Neurol* 2004; **56**: 468–77.
- Sandoval KE, Witt KA. Blood-brain barrier tight junction permeability and ischaemic stroke. *Neurobiol Dis* 2008; **32**: 200–19.
- Yang Y, Rosenberg GA. Blood brain barrier breakdown in acute and chronic cerebrovascular disease. *Stroke* 2011; **42**: 3323–8.
- Su EJ, Fredriksson L, Schielke GP, Eriksson U, Lawrence DA. Tissue plasminogen activator-mediated PDGF signaling and neurovascular coupling in stroke. *J Thromb Haemost* 2009; **7** (Suppl 1): 155–8.
- Jin R, Yang G, Li G. Inflammatory mechanisms in ischaemic stroke: role of inflammatory cells. *J Leukoc Biol* 2010; **87**: 779–89.
- Chen B, Friedman B, Cheng Q *et al.* Severe blood-brain disruption and surrounding tissue injury. *Stroke* 2009; **40**: e666–74.
- Su EJ, Fredriksson L, Geyer M *et al.* Activation of PDGF-CC by tissue plasminogen activator impairs blood-brain barrier integrity during ischaemic stroke. *Nat Med* 2008; **14**: 731–7.
- Fredriksson L, Li H, Fieber C, Li X, Eriksson U. Tissue plasminogen activator is a potent activator of PDGF-CC. *EMBO J* 2004; **23**: 3793–802.
- Fredriksson L, Ehnman M, Fieber C, Eriksson U. Structural requirements for activation of latent platelet-derived growth factor CC by tissue plasminogen activator. *J Biol Chem* 2005; **280**: 26856–62.
- Rodriguez-Gonzalez R, Blanco M, Rodriguez-Yañes M, Moldes O, Castillo J, Sobrino T. Platelet derived growth factor-CC isoform is associated with haemorrhagic transformation in ischaemic stroke patients treated with plasminogen activator. *Atherosclerosis* 2013; **226**: 165–71.
- Merali Z, Leung J, Mikulis D, Silver F, Kassner A. Longitudinal assessment of Imatinib's effect on the blood-brain barrier after ischemia/reperfusion injury with permeability MRI. *Transl Stroke Res* 2015; **6**: 39–49.
- National Institute of Neurological Disorders and Stroke rt-PA, Stroke Study Group. Tissue plasminogen activator for acute ischaemic stroke. *N Engl J Med* 1995; **333**: 1581–7.
- Hacke W, Kaste M, Fieschi C *et al.* Intravenous thrombolysis with recombinant tissue plasminogen activator for acute hemispheric stroke. The European Cooperative Acute Stroke Study (ECASS). *JAMA* 1995; **274**: 1017–25.
- Wahlgren N, Ahmed N, Davalos A *et al.* Thrombolysis with alteplase for acute ischaemic stroke in the Safe Implementation of Thrombolysis in Stroke-Monitoring Study (SITS-MOST): an observational study. *Lancet* 2007; **369**: 275–82.
- Hacke W, Kaste M, Bluhmki E *et al.* Thrombolysis with alteplase 3 to 4.5 hours after acute ischaemic stroke. *N Engl J Med* 2008; **359**: 1317–29.
- Wahlgren N, Ahmed N, Davalos A *et al.* Thrombolysis with alteplase 3–4.5 h after acute ischaemic stroke (SITS-ISTR): an observational study. *Lancet* 2008; **372**: 1303–9.
- Del Zoppo GJ, Saver JL, Jauch EC, Adams HP Jr. Expansion of the time window for treatment of acute ischaemic stroke with intravenous tissue plasminogen activator: a science advisory from the American Heart Association/American Stroke Association. *Stroke* 2009; **40**: 2945–8.
- Lees KR, Bluhmki E, von Kummer R *et al.* Time to treatment with intravenous alteplase and outcome in stroke: an updated pooled analysis of ECASS, ATLANTIS, NINDS, and EPITHEX trials. *Lancet* 2010; **375**: 1695–703.
- Sandercock P, Wardlaw JM, Lindley RI *et al.* The benefits and harms of intravenous thrombolysis with recombinant tissue plasminogen activator within 6 h of acute ischaemic stroke (the third international stroke trial [IST-3]): a randomised controlled trial. *Lancet* 2012; **379**: 2352–63.
- Emberson J, Lees KR, Lyden P *et al.* Effect of treatment delay, age, and stroke severity on the effects of intravenous

- thrombolysis with alteplase for acute ischaemic stroke – a meta-analysis of individual patients data from randomised trials. *Lancet* 2014; **384**: 1929–35.
- 24 Berkhemer OA, Fransen PS, Beumer D *et al.* A randomized trial of intraarterial treatment for acute ischaemic stroke. *N Engl J Med* 2015; **372**: 11–20.
- 25 Goyal M, Demchuk AM, Menon BK *et al.* Randomized assessment of rapid endovascular treatment of ischaemic stroke. *N Engl J Med* 2015; **372**: 1019–30.
- 26 Campbell BC, Mitchell PJ, Kleinig TJ *et al.* Endovascular therapy for ischaemic stroke with perfusion-imaging selection. *N Engl J Med* 2015; **372**: 1009–18.
- 27 Saver JL, Goyal M, Bonafé A *et al.* Stent-retriever thrombectomy after intravenous t-PA vs. t-PA alone in stroke. *N Engl J Med* 2015; **372**: 2285–95.
- 28 Jovin TG, Chamorro Á, Cobo E *et al.* Thrombectomy within 8 hours after symptom onset in Ischaemic stroke. *N Engl J Med* 2015; **372**: 2296–306.
- 29 Wahlgren N, Moreira T, Michel P *et al.* Mechanical thrombectomy in acute ischaemic stroke: consensus statement by ESO-Karolinska Stroke Update 2014/2015 by ESO, ESMINT, ESNR and EAN. *Int J Stroke* 2016; **11**: 134–47.
- 30 Parente PMDC, Santos Silva JMC. Quantile regression with clustered data. *J Econom Methods* 2016; **2016(5)**: 1–15.
- 31 Bottai M, Zhen H. Multiple imputation based on conditional quantile estimation. *Epidemiol Biostat Pub Health* 2013; **10**: e8758–1 DOI: 10.2427/8758.
- 32 Druker BJ, Guilhot F, O'Brien SG *et al.* Five-year follow-up of patients receiving imatinib for chronic myeloid leukemia. *N Engl J Med* 2006; **355**: 2408–17.
- 33 Lopes Pinheiro MA, Kooij G, Mizze MR *et al.* Immune cell trafficking across the barriers of the central nervous system in multiple sclerosis and stroke. *Biochim Biophys Acta* 2015; **1862**: 461–71.

APPENDIX 1 MAIN CRITERIA FOR INTRAVENOUS THROMBOLYSIS (IVT)

- Clinical diagnosis of acute ischaemic stroke and computed tomography scan exclusion of haemorrhage
- Symptoms must be distinguishable from an episode of generalized ischaemia (i.e. syncope), seizure or migraine disorder
- Treatment initiated within 4.5 h of stroke onset

Exclusion criteria

- Severe stroke as assessed clinically (e.g. NIHSS score >25) and/or developing infarct extending into more than one-third of the middle cerebral artery territory or half of other vascular territories
- Administration of heparin within 48 h preceding the onset of stroke with an elevated activated thromboplastin time (aPTT) at presentation, or corresponding low-molecular weight heparin

- Platelet count below 100 000 mm⁻³. Significant bleeding disorder at stroke onset or within the past 6 months, known haemorrhagic diathesis.
- Patients receiving oral anticoagulants, for example warfarin sodium (INR >1.7) or direct oral anticoagulation: dabigatran (Pradaxa, aPTT >40 s), apixaban, rivaroxaban
- History, evidence or suspicion of intracranial haemorrhage including subarachnoid haemorrhage
- Systolic blood pressure >185 mmHg or diastolic blood pressure >110 mmHg, in spite of repeated doses of i.v. medication to reduce blood pressure to below these limits
- Any history of central nervous system damage (i.e. neoplasm, aneurysm, intracranial or spinal surgery) or neurodegenerative disorder
- Haemorrhagic retinopathy, or other haemorrhagic ophthalmic conditions
- Patients of childbearing potential, if pregnancy cannot be excluded by pregnancy test and/or interview
- Major surgery or significant trauma in previous 10 days (including any trauma associated with current acute myocardial infarction), recent trauma to head or cranium

APPENDIX 2 MAIN CRITERIA FOR THROMBECTOMY ACCORDING TO LOCAL GUIDELINES

- Confirmed diagnosis on computed tomography angiography of persistent occlusion of the proximal middle cerebral artery, terminal carotid artery or basilar artery consistent with the clinical symptoms
- NIHSS ≥ 6 or aphasia
- Anticipated life expectancy of at least 6 months
- Initiation of endovascular procedure (defined as start with groin puncture) within 8 h of symptom onset

Exclusion criteria

- Known significant prestroke disability (mRS ≥ 2)
- Extended early ischaemic changes
- Severe comorbidities such as dementia, terminal illness and other medical conditions

APPENDIX 3 INCLUSION AND EXCLUSION CRITERIA SPECIFIC FOR THE STUDY DRUG IN ADDITION TO CRITERIA FOR INTRAVENOUS THROMBOLYSIS (IVT) AND THROMBECTOMY

Inclusion criteria

- Clinical diagnosis of acute ischaemic stroke causing a measurable neurological deficit defined as impairment of language, motor function and cognition, including dysphasia and neglect, gaze and vision. Ischaemic stroke is defined as an event characterized by sudden onset of acute focal neurological deficit, presumed to be caused by cerebral ischaemia, after CT scan exclusion of haemorrhage
- Neurological deficit corresponding to ≥ 7 points on the National Institutes of Health Stroke Scale (NIHSS), at the time of randomization
- Age 18–85 years
- IVT is indicated on clinical grounds and has been initiated within 4.5 h of stroke onset
- Patients should be randomly assigned to treatment as soon as possible but not later than 1 h after completion of IVT, or, if applicable, within 1 h after completion of additional intra-arterial intervention
- Patients are competent to make a decision and have provided informed consent with regard to participation in the study, retrieval and storage of data and follow-up procedures

Exclusion criteria

- Severe stroke as assessed clinically (e.g. NIHSS > 25) and/or developing infarct extending into more than one-third of the middle cerebral artery territory or half of other vascular territories
- Acute pancreatitis
- Severe hepatic dysfunction, including hepatic failure, cirrhosis, portal hypertension (oesophageal varices) and active hepatitis

- Ongoing treatment with chemotherapy
- Drugs that may increase the plasma concentration of imatinib: ketoconazole, itraconazole, erythromycin and clarithromycin
- Drugs that may decrease the plasma concentration of imatinib: dexamethasone, phenytoin, carbamazepine, rifampicin, phenobarbital, fosphenytoin, primidone and St John's wort (*Hypericum perforatum*)
- Contraindications against magnetic resonance imaging

Correspondence: Niaz Ahmed and Nils Wahlgren, Department of Neurology, Karolinska University Hospital, 17176 Stockholm, Sweden. (Fax: +46 8 736 6158; e-mails: niaz.ahmed@karolinska.se or nils.wahlgren@karolinska.se)

Supporting Information

Additional Supporting Information may be found in the online version of this article:

Data S1. Definitions of haemorrhagic transformations and cerebral oedemas.

Data S2. Severity of non-serious adverse events.

Data S3. Plasma concentrations of imatinib.

Data S4. Safety analysis – laboratory values.

Data S5. Cerebral oedema (COED).

Data S6. Median unadjusted NIHSS improvement in imatinib dose groups compared to controls.

Data S7. Study coordination and contribution to the manuscript.

Figure S1. Percent change of NIHSS from baseline (per protocol population). ■