

Supplemental Figure – Levi et al.

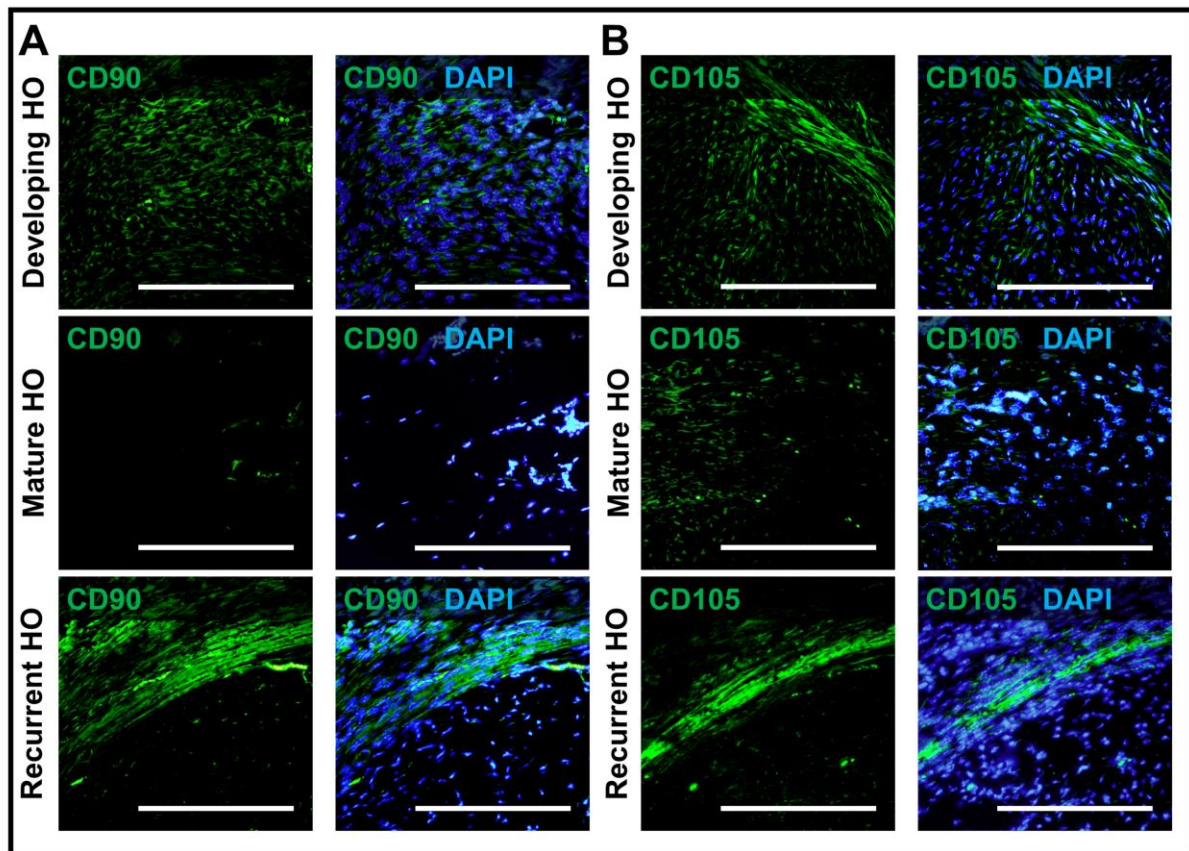


Fig S1. Characterization of mesenchymal cell populations demonstrates similarities between developing and recurrent HO and undergo *de novo* chondrogenic differentiation. (A) Immunostaining for CD90 shows presence of mesenchymal cells in developing HO and recurrent HO, with relative absence in mature HO; (B) Immunostaining for CD105 shows presence of mesenchymal cells in developing HO and recurrent HO, with relative absence in mature HO. Scale Bars represents 200 μm .