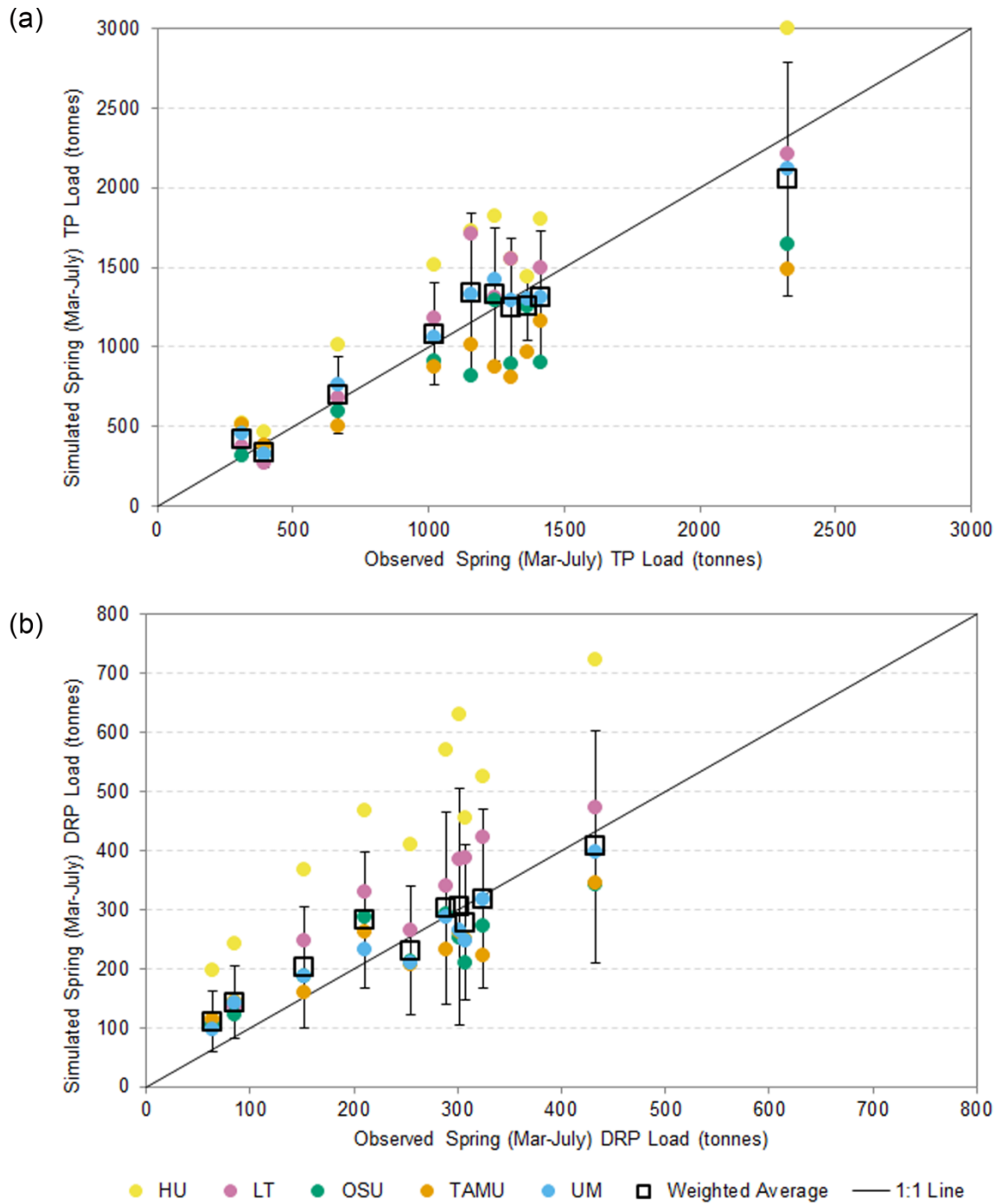


D Scavia *et al.* – Supporting Information



**WebFigure 1.** Simulated versus observed 2005–2014 March–July total phosphorus (TP; [a]) and dissolved reactive phosphorus (DRP; [b]) loads. Models were developed by groups at Heidelberg University (HU), LimnoTech (LT), Ohio State University (OSU), Texas A&M University (TAMU), and University of Michigan (UM). Weighted average values are shown with the hollow square and the error bars around the weighted average represent the 95% confidence interval.