

2017-04-20

# Annotation for Collaborative Engagement: Lessons for Library Publishing and the Classroom

Welzenbach, Rebecca; Walker-Peddakotla, Arti

---

<http://hdl.handle.net/2027.42/136647>

# Annotation for Collaborative Engagement: Lessons for Library Publishing and the Classroom



Rebecca Welzenbach  
Director, Strategic Integration and Partnerships



MICHIGAN PUBLISHING  
UNIVERSITY OF MICHIGAN PRESS

### University of Michigan Press

In partnership with their authors and series editors, the Press publishes in a wide range of humanities and social science disciplines. With a rich history of publishing expertise, the Press leads in the development of digital scholarship and supports the dissemination of knowledge as widely and freely as possible.



### Michigan Publishing Services

As experts in scholarly publishing, we provide a suite of publishing-related services to the University of Michigan to help increase the visibility, reach, and impact of scholarship.



### Deep Blue

University of Michigan's permanent, safe, and accessible service for representing our rich intellectual community. Its primary goal is to provide access to the work that makes Michigan a leader in research, teaching, and creativity.

# Annotating All Knowledge

A new open layer is being created over all knowledge.

A coalition of some of the world's key scholarly publishers, platforms, libraries, and technology organizations are coming together to create an open, interoperable annotation layer over their content.



# Michigan Publishing and hypothes.is

2014

- Launch on JEP
- Annotation for copyediting/production?

2015

- Open peer review experiment
- OA Week book club

2016

- PubClub
- Workshops

2013

2017



MICHIGAN PUBLISHING  
UNIVERSITY OF MICHIGAN PRESS

# Test Case: Journal of Electronic Publishing

The screenshot shows the JEP website interface. At the top left is the logo [JEP] and the text 'the journal of electronic publishing'. To the right is a search bar with 'quick search' and a 'Search' button. Below the logo is a navigation menu with 'CURRENT', 'ARCHIVE', 'ABOUT', 'EDITORS', and 'SUBMIT'. A secondary bar contains a link to 'RETURN TO SEARCH RESULTS' and a checkbox for 'Highlight matching search terms'. The main content area features the article title 'New Feature: Article Annotation with Hypothes.is' by Maria Bonn and Jonathan McGlone. It includes the volume and issue information, the DOI, and a Creative Commons BY license. The article text describes the launch of a new feature for Hypothes.is annotations. On the right side of the article, there are buttons for 'Print' and 'Share+' next to a circular icon with the number '26'. A vertical sidebar on the right edge of the browser window shows navigation icons and a page number '1'.

[JEP] the journal of electronic publishing

quick search Search

CURRENT ARCHIVE ABOUT EDITORS SUBMIT

« RETURN TO SEARCH RESULTS  Highlight matching search terms

## New Feature: Article Annotation with Hypothes.is

Maria Bonn, Jonathan McGlone

Volume 17, Issue 2: Education and Training for 21st Century Publishers, Spring 2014  
DOI: <http://dx.doi.org/10.3998/3336451.0017.201>

Permissions

This issue of JEP features the launch of a **new feature** that we hope will both enrich our readers' experience and our own understanding of how to do the best digital publishing. With this issue, we introduce full support of [Hypothes.is](#), an open platform for the collaborative evaluation of knowledge. It supports sentence-level critique and is a tool for community peer-review to provide commentary, references, and insight at the article level. Now, every article of JEP is open for commentary and discussion through annotation. Please explore the annotations and add your own. The authors, publishers, and Hypothes.is developers are all eager to see your contributions and to observe and participate in the many discussions we hope it will open up.

*Using Hypothes.is with JEP*

Print Share+ 26

1

# Test Case: Journal of Electronic Publishing

- Introduction/instructions
- First use case of “embedding”  
hypothes.is
- Low bar to add significant  
possibility for interaction!



MICHIGAN PUBLISHING

UNIVERSITY OF MICHIGAN PRESS

# Community: “Partners in Local Resilience” Pub Club Event

## Abstract

Identifying mutually beneficial objectives for researchers and practitioners engaged in climate adaptation efforts is a challenge. Differences can occur in terms of motivations, objectives, scale, and decision-making authority.

Drawing on the experience of researchers and practitioners involved in a climate adaptation project focused on the Great Lakes region, this paper provides an overview of the relationship between the University of Michigan's Graham Sustainability Institute and the City of Ann Arbor, Michigan. Utilizing a thick description for reviewing participant experience, this paper offers analysis of the effectiveness of two approaches to translational research: the boundary chain model and the integrated assessment model. The paper also discusses the application of these translational research approaches as an iterative engagement process for enhancing the city's climate resiliency while strengthening the university's research outreach efforts.

The deployment of these translational research models, coupled with numerous points of engagement between key university and city actors, has helped both entities emerge as national leaders in sustainability. Transferable lessons discussed include taking time to build trust among participants, the importance of proximity for being responsive, and utilizing organizational structures for supporting collaboration.

(Note: This manuscript was submitted as a feature editorial per the recommendation of the MJS editorial board.)

## Introduction

Like many other cities around the globe, the City of Ann Arbor, Michigan (U.S.) faces numerous climate impacts that are and will continue to affect the livelihood and safety of its residents. Located in a water-rich region in Southeast Michigan, approximately forty miles west of Detroit, a key concern for Ann Arbor is increasing precipitation, both in the form of seasonal trends (with fall alone experiencing a 27 percent increase from 1981–2010 compared to the previous 30 years) and also the heaviest 1 percent of storms, which have increased in frequency and size (GLISA, 2013). Extended heat waves during the summer, shifting forest composition, and increasing variability in freeze-thaw cycles are other climate related impacts city stressors. These stress the built and natural infrastructure as well as the residents. However, unlike many other cities, Ann Arbor is home to a major research institution and hub of innovation: the University of Michigan (U-M). Ann Arbor has a residential population of 114,000, and U-M's 43,000 students and 41,000 faculty and staff play a significant role in shaping the character and culture of the city (University of Michigan Office of Budget and Planning, 2015, Palmer and Thomas, 2014).

Ann Arbor has a long history of planning around sustainability issues. The first energy plan was created in the 1980s, a

Public

Annotations 29 Page Notes

**dcoty** Oct 25, 2016

a climate adaptation project focused on cities in the Great Lakes region

What other cities have been involved? I wonder how their progress compares to Ann Arbor.

#Pubclub

**aleighp** Oct 21, 2016

taking time to build trust among participants, the importance of proximity for being responsive, and utilizing organizational structures for supporting collaboration

Important lessons for any collaborative effort.

#PubClub

**dcoty** Oct 25, 2016

is increasing precipitation, both in the form of seasonal trends (with fall alone experiencing a 27 percent increase from 1981–2010 compared to the previous 30 years)

That seems fairly significant. It also sounds like Fall is seeing the biggest increase. Is there a reason it would be occurring more in the fall?

#Pubclub

**ErinH** Nov 10, 2016

as well as the residents



# Community

- Annotation in support of “IRL” event
- Enables participation from those who can’t be there, or don’t wish to speak
- We (staff) used the tool! Few others did. :/
- “When it is open and optional, I rarely get adoption” (hypothes.is forum user)




# Authors/Faculty

Home Search


> Public



Annotations 1 Page Notes Orphans 3



**Manifesto for the Humanities: Transforming Doctoral Education in Good Enough Times**  
Sidonie Smith

Series: digitalculturebooks

DOI: <http://dx.doi.org/10.3998/dcbooks.13607059.0001.001>  [Permissions](#) [Table of Contents](#)

Share+   29

« PREVIOUS SECTION »      « NEXT SECTION »

## Realities on the Ground

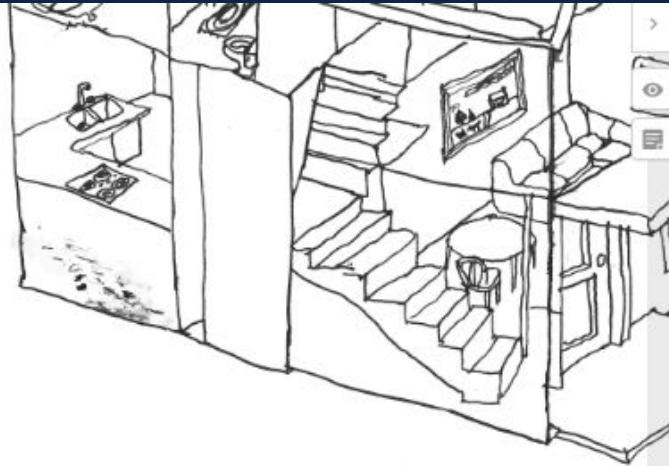
Elsewhere around the world, in China and India, for instance, academic leaders and government c  
investing in higher education to meet the needs of the growing number of students qualified to en  
to find admission into institutions of higher education. As they do so, they look to the model of U

**AWStrouse** May 16, 2015

*Precarious Humanities*

There have been a couple of sections now of background info, but it might be more effective to condense all of the bad news about the present so that we can move more quickly to the proposed solutions.

# Authors/Faculty



*American Homes is a book. American Homes is an idea. American Homes is a book of idea beginning. American Homes is about to end. American Homes is the foundation of all uni soundtrack to our American lives. American Homes is the disinclination of individual sta government. American Homes is powerlessness. American Homes is slow evolution. Ame white. American Homes is great for families. American Homes is better for business. Ame women with a flair for the unconventional. American Homes is aimed at men who are con their feelings. American Homes is feeling much better. American Homes is never worse. A course. American Homes is between shopping centers and the skeletons of factories. At 38*

Public

**RxR** Jan 18, 2016

DOOROGRAPHICAL DIVISIONS

This section was the first part of the book I wrote. It was originally called *The Doors* and it was narrated by Jim Morrison, not the singer, but a fictional character with the same name. It didn't work.

#pubclub

**aleighp** Jan 13, 2016

CELLAR DOOR

"Cellar door" has been considered one of the most beautiful-sounding words/phrases in the English language since 1903.

#pubclub

**rwelzenb** Feb 4, 2016

Ajar.

Raise your hand if you first encountered the word "ajar" as a small child when someone made this joke and you didn't get it.

#pubclub

#pubclub

**aleighp** May 5, 2016

Answer the Door

Answer the door!

# Authors/Faculty

- Low-bar way to offer something innovative
- Some authors will be very enthusiastic!
- Anxiety around control, monitoring (“What about trolls/spam/anti-vaxxers?”)
- Authors *like* the idea, but do they use it?




MICHIGAN PUBLISHING


UNIVERSITY OF MICHIGAN PRESS


# Readers

## DIGITALCULTUREBOOKS

Home Search



**Ethical Programs: Hospitality and the Rhetorics of Software**  
James J. Brown, Jr.  
Series: Digital Humanities  
DOI: <http://dx.doi.org/10.3998/dh.13474172.0001.001>  [Permissions](#) [Table of Cont](#)

Share+  48

« PREV SECTION      NEXT SECTION »

### 1. Web Hosting: Hospitality and Ethical Programs

The suicide bomber stands as perhaps the most disturbing symptom of hosp through porous boundaries (no matter how well policed these boundaries m us that the other will arrive by way of doors and interfaces. While the openn with which bodies can move through transportation infrastructures ensures sealed off from the threat of a suicide bomb. But the uncertainty and comple: suicide bomber **herself** too.

On December 31, 2010, a suicide bomb attack was thwarted not by police or i unlikely hero—spam. A suicide bomber was killed in a safe house as she pre Square during a New Year’s Eve celebration. The bomber in this case was a “ to describe female suicide bombers who have lost a relative in battles betw 36

Public

Annotations 37 Page Notes 2


**JzWells** Oct 21, 2015

herself

Why not his or herself? I know he's specifically talking about a woman below, but here this should be more generalized.

**PeteyPete** Oct 21, 2015

In this case, a spam message arrived unexpectedly,



**caseyboyle** Oct 21, 2015

Arriving in the Domodedovo Airport or Red Square or other public spaces, the suicide bomber takes advantage of the ... More

What a perfect example. The dynamics of networked relation entail a mutual exposure.

network\_ethics exposure

**nosatiation** Oct 22, 2015

# Readers

- Accessibility
- Quality/“moderatability”
- Privacy--excited about group  
functionality!
- Stability



MICHIGAN PUBLISHING

UNIVERSITY OF MICHIGAN PRESS

What's next?  
Fulcrum

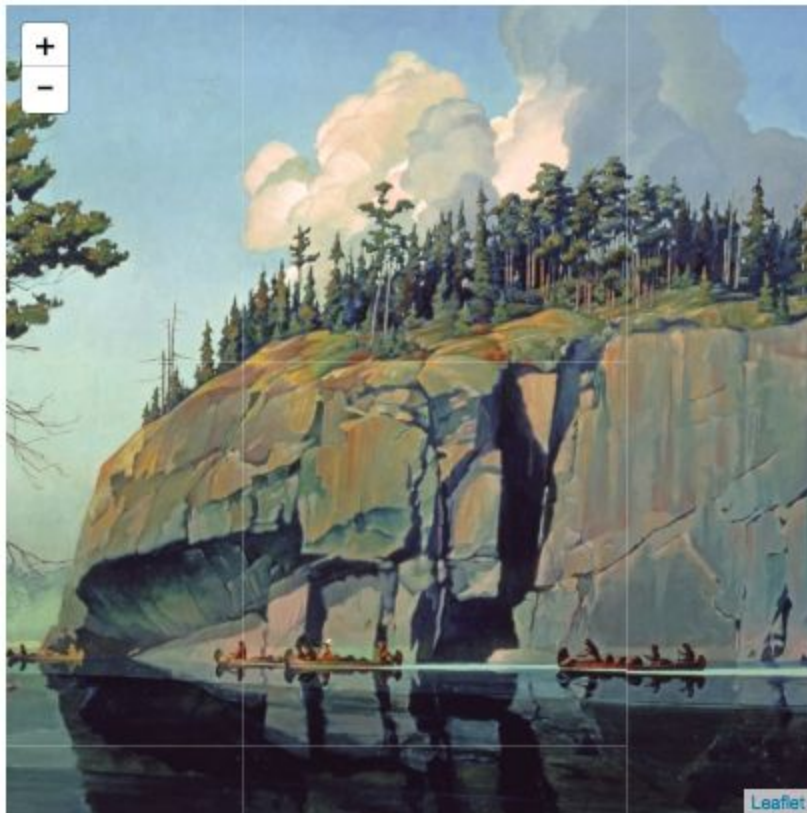


MICHIGAN PUBLISHING  
UNIVERSITY OF MICHIGAN PRESS

Home / Canoes: A Natural History in North America / Picture Rock at Crooked Lake (Return of the Voyageur)

◀ Previous

Next ▶



Francis Lee Jaques, *Picture Rock at Crooked Lake (Return of the Voyageur)*, 1947. Oil on canvas, 83.8 x 106.6 cm.

## *Picture Rock at Crooked Lake (Return of the Voyageur)*

From *Canoes: A Natural History in North America* by Mark Neuzil and Norman Sims

Info

Permissions

Stats

Technical Info

### Creator

Jaques, Francis Lee

### Subjects

History  
Cultural Studies  
Literature  
Native American Studies  
Regional Studies

### Date

1947

### Related Section

Introduction

### Keywords

Ontario, voyageur, Minnesota, birch bark, painting

### Content Type

painting



# What's next? Fulcrum

- Distance between annotations and the work?
- Across the board, or optional per title?
- Notifications--how will we/authors monitor?



# Takeaways

- Hypothes.is is awesome and easy, with lots of potential
- So far, works best as a support to events, assignments, or existing communities
- What it means for annotation to be part of a book (or not!) still feels like unexplored territory.  
  
We will explore!



**Thank you!**