

**Uncertainty in hydrological signatures for gauged and ungauged basins**

Ida K. Westerberg<sup>1,2</sup>, Thorsten Wagener<sup>1,3</sup>, Gemma Coxon<sup>4</sup>, Hilary K. McMillan<sup>5,6</sup>,  
Attilio Castellarin<sup>7</sup>, Alberto Montanari<sup>7</sup>, Jim Freer<sup>3,4</sup>

<sup>1</sup> Department of Civil Engineering, University of Bristol, Bristol, UK

<sup>2</sup> IVL Swedish Environmental Research Institute, Stockholm, Sweden

<sup>3</sup> Cabot Institute, University of Bristol, Bristol, UK

<sup>4</sup> School of Geographical Sciences, University of Bristol, Bristol, UK

<sup>5</sup> National Institute of Water and Atmospheric Research, Christchurch, New Zealand

<sup>6</sup> Department of Geography, San Diego State University, San Diego, California, USA

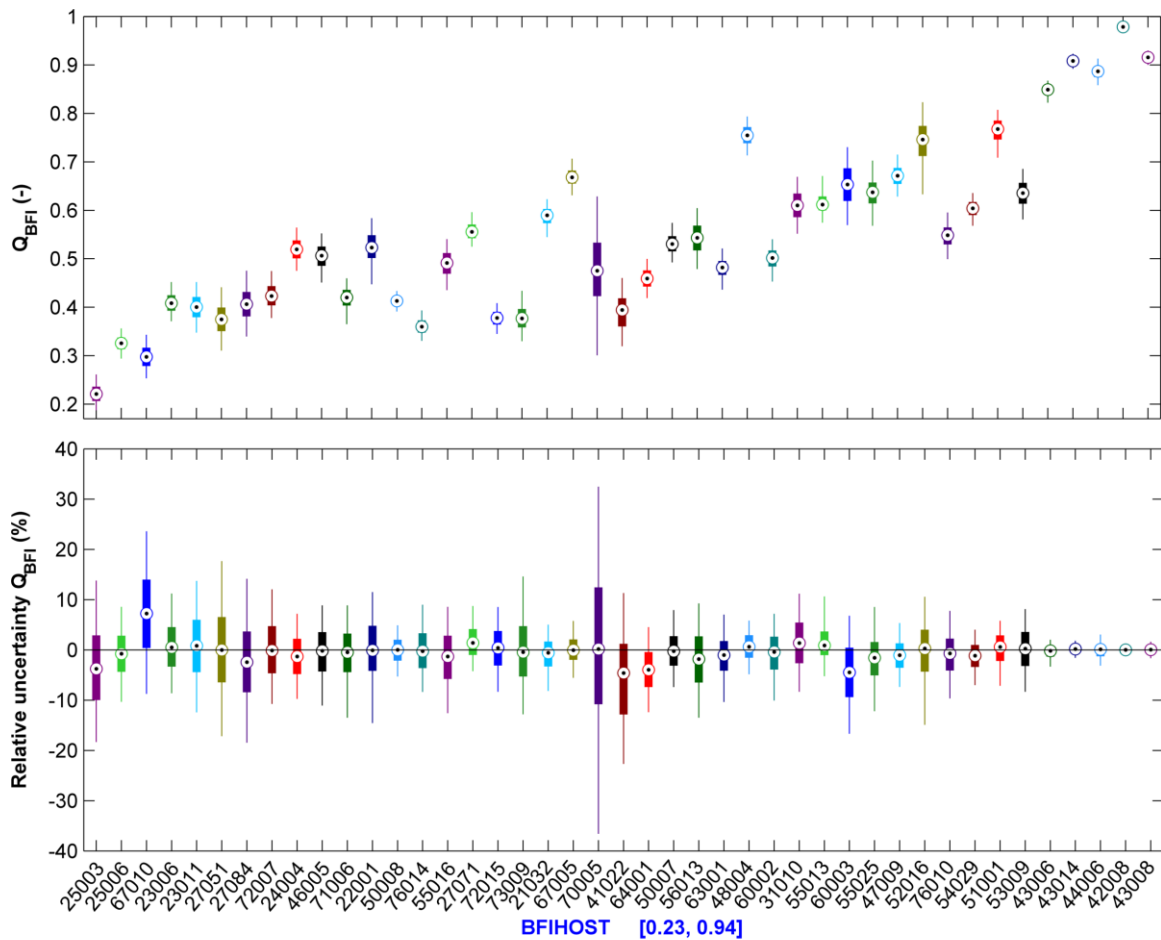
<sup>7</sup> Department of Civil, Chemical, Environmental, and Materials Engineering (DICAM),  
University of Bologna, Bologna, Italy

**Contents of this file**

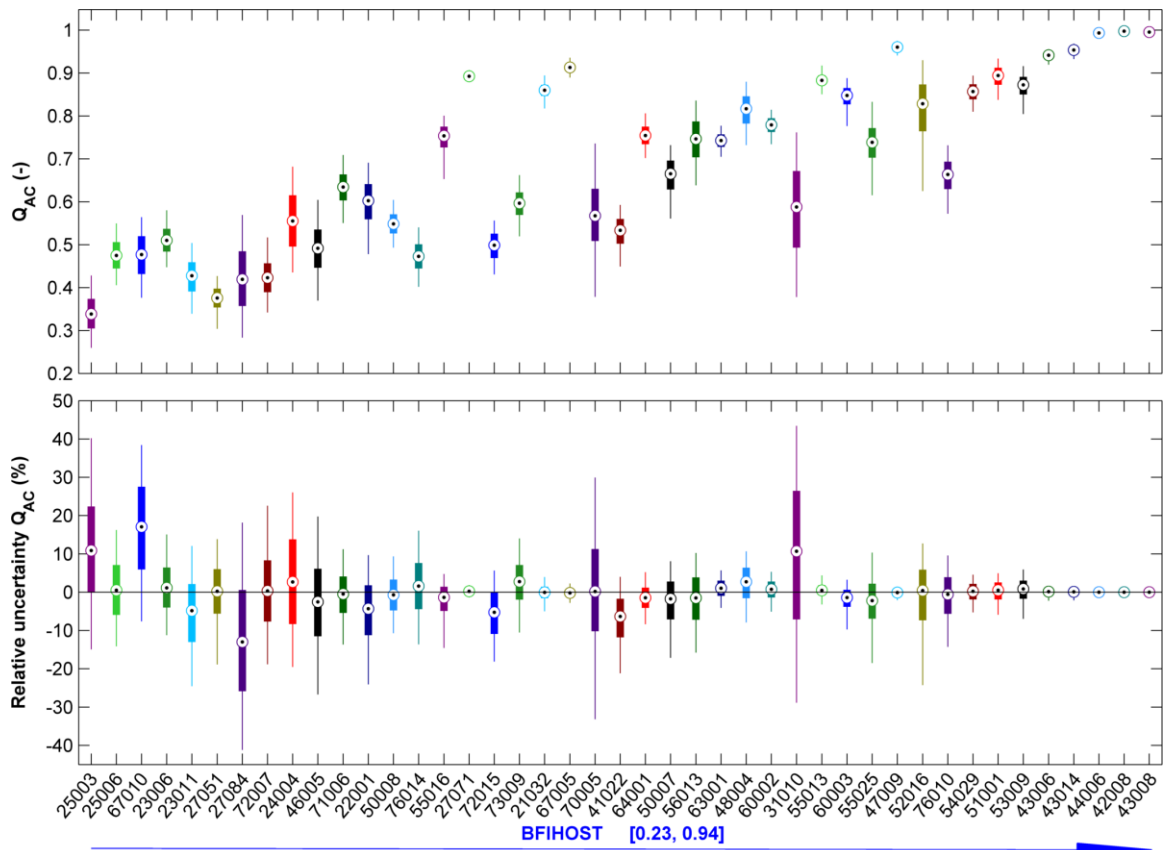
Figures S1 to S5

**Introduction**

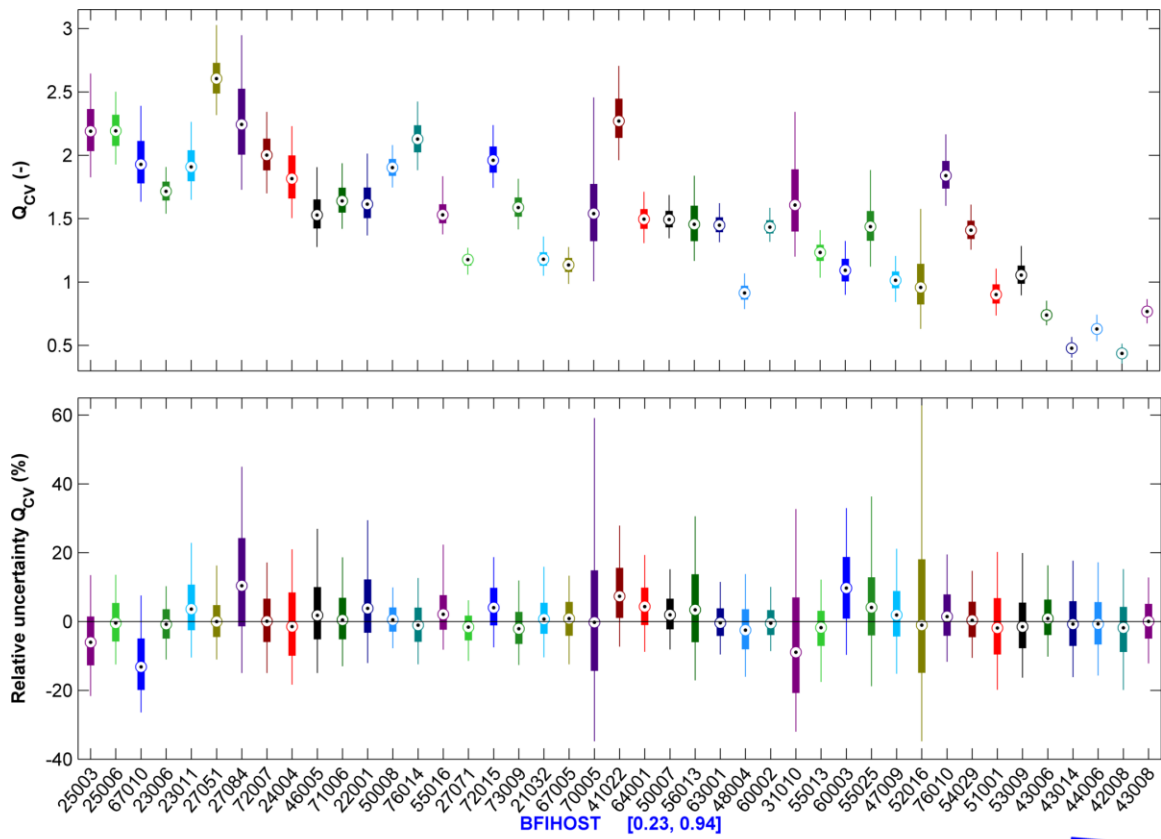
These supporting figures describe the estimated gauged signature uncertainties across all the catchments for the signatures that were not reported in Figures 4 and 6 in the paper.



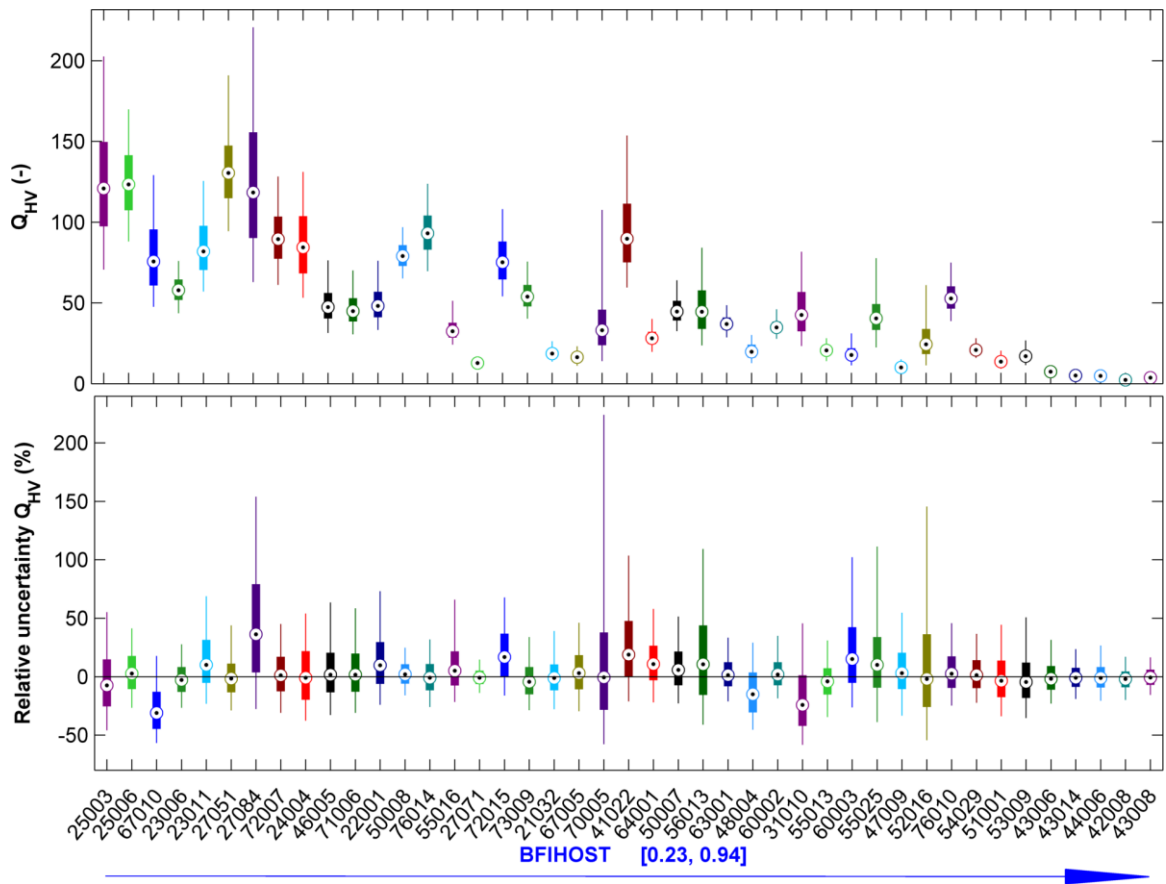
**Figure S1.** Absolute (top) and relative (bottom) uncertainty in  $Q_{BFI}$  for all catchments. The catchments are sorted from left to right according to their BFIHOST values.



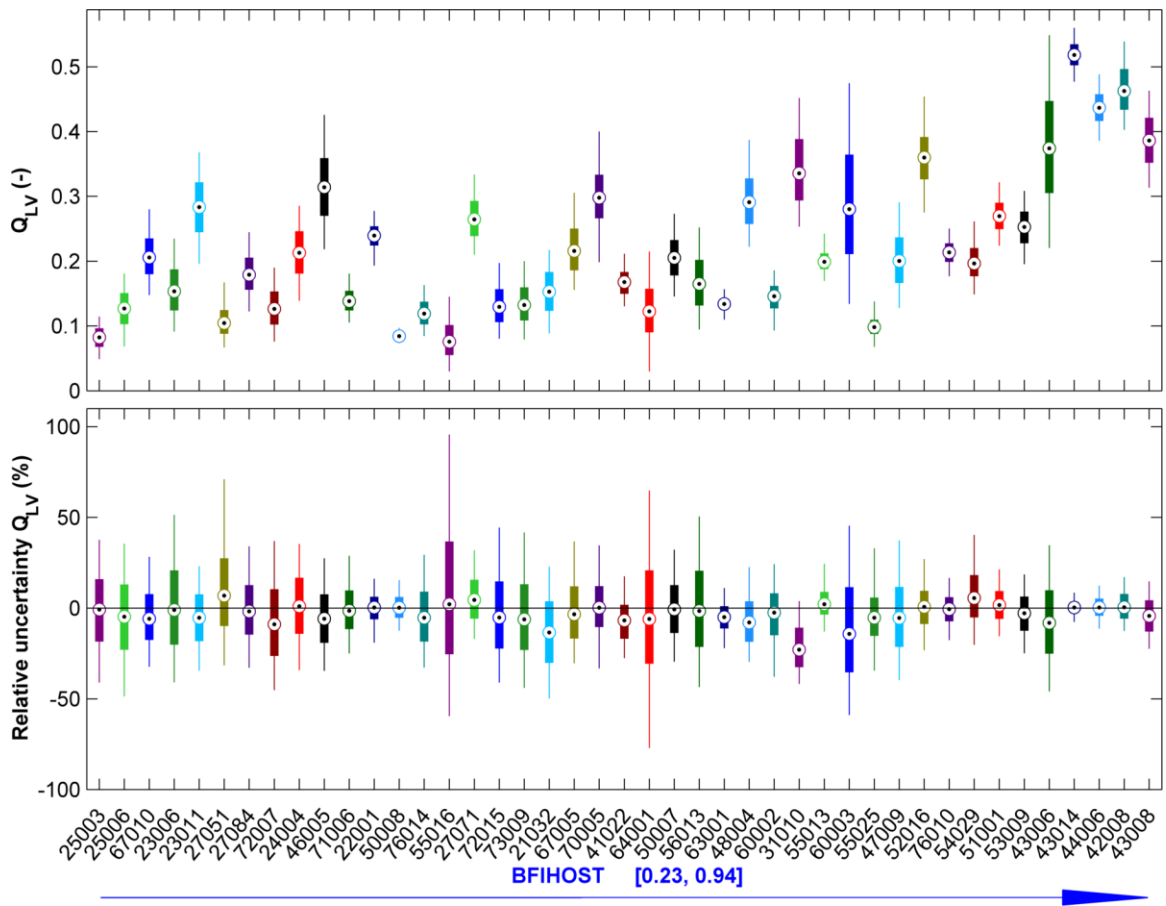
**Figure S2.** Absolute (top) and relative (bottom) uncertainty in  $Q_{AC}$  for all catchments. The catchments are sorted from left to right according to their BFIHOST values.



**Figure S3.** Absolute (top) and relative (bottom) uncertainty in  $Q_{CV}$  for all catchments. The catchments are sorted from left to right according to their BFIHOST values.



**Figure S4.** Absolute (top) and relative (bottom) uncertainty in  $Q_{HV}$  for all catchments. The catchments are sorted from left to right according to their BFIHOST values.



**Figure S5.** Absolute (top) and relative (bottom) uncertainty in  $Q_{LV}$  for all catchments. The catchments are sorted from left to right according to their BFIHOST values.